

Subject:	Treasury Management Strategy & Treasury Management Practices (updates for 2020/21)	Status:	For Publication
Report to:	Cabinet Full Council	Date:	12 th February 2020 26 th February 2020
Report of:	Head of Finance	Portfolio Holder:	Resources
Key Decision:	<input checked="" type="checkbox"/> Forward Plan <input checked="" type="checkbox"/>	General Exception	<input type="checkbox"/> Special Urgency <input type="checkbox"/>
Equality Impact Assessment:	Required:	Yes /No	Attached: Yes /No
Biodiversity Impact Assessment	Required:	Yes /No	Attached: Yes /No
Contact Officer:	Ken Masser	Telephone:	01706 252469
Email:	kenmasser@rossendalebc.gov.uk		

1.	RECOMMENDATIONS
1.1	Members are asked to consider and approve the revised Treasury Management Strategy Statement and the Treasury Management Policy and Practices.
1.2	Members are asked to delegate any further minor changes to the Head of Finance in consultation with the Portfolio Holder for Resources.

2. PURPOSE OF REPORT

- 2.1 The purpose of the report is to obtain Cabinet consideration and recommendation of the updated Treasury Management Strategy Statement (TMS) and Treasury Management Policy and Practices (TMP) ahead of their approval at Full Council.

3. CORPORATE PRIORITIES

- 3.1 The matters discussed in this report impact directly on the following corporate priorities:
- **A clean and green Rossendale:** our priority is to keep Rossendale clean and green for all of Rossendale's residents and visitors, and to take available opportunities to recycle and use energy from renewable sources more efficiently.
 - **A connected and successful Rossendale that welcomes sustainable growth:** our priority is to ensure that we are well connected to our residents, key partners and stakeholders. We want to make the most of every pound we spend and we are always looking for new and innovative ways to make the resources we do have, work harder for us.
 - **A proud, healthy and vibrant Rossendale:** our priority is to ensure that we are creating and maintaining a healthy and vibrant place for people to live and visit.

4. RISK ASSESSMENT IMPLICATIONS

- 4.1 All the issues raised and the recommendation(s) in this report involve risk considerations as set out below:
- Failure to comply with legal statute, Codes of Practice and regulations of the Council.
 - Financial risks and credit risks exposure as a result of treasury management decisions. The TMS lays the ground rules for balancing the desire to maximize interest earning capacity with the potential risks of investments in the financial sector, especially in the

current economic climate.

5. BACKGROUND AND OPTIONS

- 5.1 This is an annual update of the **Treasury Management Strategy Statement (Appendix 1)** and the **Treasury Management Policy and Practices (Appendix 2)**, based upon the Chartered Institute of Public Finance and Accountancy's (CIPFA) Treasury Management and Prudential Codes 2017.
- 5.2 Treasury management is concerned with how organisations manage their cash resources and its scope covers borrowing, investment and hedging instruments and techniques. Risk is inherent in all treasury management activities and it is necessary to balance risk and return. In the public services it is generally considered that the priority is to protect capital rather than maximize return.
- 5.3 The suggested Treasury Management Strategy Statement for 2020/21 at Appendix 1 is written in conjunction with both the Revenue Budget for 2020/21 and the Capital Strategy and Capital Programme 2020/21 to 2022/23 which are also being placed before this committee, specifically in respect of the TMSS at Appendix 1:-
- Capital Strategy at 1.2.1
 - Capital Expenditure at 2.1 and 5.1.1
 - The Capital Financing Requirement (CFR) at 2.2
 - Minimum Revenue Provision (MRP) and Voluntary Revenue Provision (VRP) at 2.4
 - Interest expenditure and income at 5.1.3a
- 5.4 The interest rates quoted at paragraphs 4.4 and 5.2 of the Strategy reflect the average of samples gathered by Link Asset Services as at the 31st January 2020 from city and non-city forecasters, including HM Treasury. It should be noted that there is a large range in those forecasts, and the average is at best an educated estimate in today's financial climate. Whilst forecasters are comparatively confident about their estimates for the coming financial year, those for longer term are far less reliable.

In light of low interest base rates, Council officers have recently taken a more active strategy of exploring alternative investment options with the Council's related parties and subsidiaries. During 2017/18 this included a 3-year prepayment of the Council's anticipated pension costs in order to achieve around £300k of savings over the 3 years. Officers expect to continue to this strategy in the coming years, especially with the next pensions prepayment option in April 2020.

- 5.5 The Treasury Management Strategy Statement covers:
- treasury controls and reporting mechanisms required to limit the treasury risk and activities of the Council
 - the current and expected cash and reserve balances (2.3)
 - the borrowing requirement and borrowing limits (3.1)
 - prospects for interest rates (3.3)
 - policy on borrowing in advance of need (3.5)
 - the investment strategy and expected rates of return (4.4)
 - Prudential Indicators and the MRP strategy (5.1)
 - treasury management scheme of delegation (5.6) and the relevant roles and responsibilities of delegated officers (5.7)

- 5.6 As part of the Council's budget-setting work the estimates of future interest rates, capital resources and expenditure and capital financing costs (through the Minimum Revenue Provision) have been included in arriving at a balanced budget for 2020/21.
- 5.7 Members' attention is drawn to the change to the maximum deposit with any one bank on page 30. In light of the Council's plans to fund Spinning Point and the construction of Futures Park Plot 5 through additional PWLB borrowing, officers recommend that the maximum deposit with any one bank is maintained at £8m (or 50% of the resources available at the time), and the maximum with any one group remains at £10m.
- This balances the need to maximise interest earned, even in short-term investments/bank accounts, with the need to protect Council resources from undue risk.
- 5.8 The Treasury Management Policy and Practices at Appendix 2 provide further operational detail on the plans within the Treasury Management Strategy Statement. For 2020/21 there have been only very minor amendments to the Treasury Management Policy and Practices to cover the works with related parties and subsidiaries and to keep it in line with updates in the TMSS above.
- 5.9 The Treasury Management Practices cover
- risk management arrangements and techniques
 - performance measurement
 - decision making and operational controls within the day to day administration of treasury and cash flow management
 - measures to prevent money laundering
 - training requirements for staff included within the delegation arrangements in the Treasury Management Strategy Statement
 - further details on the use of external service providers
- 5.10 As mentioned at 5.4 above, at times of low interest rates from banks, one alternative use of resources open to the Head of Finance is the pre-payment of revenue creditors in order to achieve early payment discounts. These transactions are not treated as investments, therefore do not fall under the TMS or TMPs in the appendices attached. However, the same considerations of risk and reward should be considered prior to entering into any such agreement. The Head of Finance must be sure of the nature and obligation of the future transactions, their expected value and the credit worthiness of the supplier/counterparty involved.

The risks around this strategy include, amongst others:

- Overpayment of contributions cannot be returned.
- An unexpected increase in bank base rates.
- Agreeing the accounting treatment with external auditors.
- An unexpected reduction in cash balances.

Each individual opportunity would be assessed on its own merits and reported to members at the next available opportunity.

6. SECTION 151 OFFICER

- 6.1 Financial matters are dealt within the report.

7. MONITORING OFFICER

- 7.1 There are no material implications.

8. POLICY IMPLICATIONS AND CONSULTATION CARRIED OUT

- 8.1 Consultation has been with the Council's treasury management advisors, Link Asset Services.
- 8.2 Officers have ensured that the documents attached meet the requirements of the current Chartered Institute of Public Finance and Accountancy's (CIPFA) revised Treasury Management Code of Practice and revised Prudential Code 2017 by adopting the proforma documents provided by Link Asset Services with only minor adaptations for local considerations.

9. CONCLUSION

- 9.1 Following consideration at Cabinet, Members are asked to approve the adoption of the updated Treasury Management Strategy Statement and Treasury Management Policy and Practices, which will ensure continued compliance with the Code and continue to contain the Councils exposure to financial risk.
- 9.2 In light of changing cash flow requirements and some large capital plans ahead, Members are also asked to delegate any minor amendments required within the year to the Head of Finance in consultation with the Portfolio Holder for Resources and Customer Services.

Background Papers	
Document	Place of Inspection
Final Accounts working papers	Financial Services
Template TMSS and TMPs provided by Link Asset Services	Financial Services and Link website (client area)
Previously adopted 2019/20 TMS & TMP	Website: Full Council February 2019

**Treasury Management Strategy Statement,
Minimum Revenue Provision Policy Statement and Annual
Investment Strategy**

Updated – February 2020

INDEX

Page

1	INTRODUCTION	3
1.1	Background	3
1.2	Reporting Requirements	3
1.3	Treasury Management Strategy	4
1.4	Training	4
1.5	Treasury management consultants	4
2	THE CAPITAL PRUDENTIAL INDICATORS 2020/21 – 2022/23	6
2.1	Capital expenditure	6
2.2	The Council's borrowing need (the Capital Financing Requirement)	6
2.3	Core funds and expected investment balances	7
2.4	Minimum Revenue Policy Statement	9
3	BORROWING	10
3.1	Current portfolio position	10
3.2	Treasury Indicators: limits to borrowing activity	10
3.3	Prospects for interest rates	11
3.4	Borrowing strategy	14
3.5	Policy on borrowing in advance of need	14
3.6	Debt rescheduling	15
3.7	Municipal Bond Agency	15
4	ANNUAL INVESTMENT STRATEGY	16
4.1	Investment policy	16
4.2	Creditworthiness policy	18
4.3	Other Considerations	18
4.4	Investment strategy	16
4.5	End of year investment report	19
4.6	External fund managers (if applicable)	19
5	APPENDICES	20
5.1	Prudential and treasury indicators and MRP statement	21
5.2	Interest Rate Forecasts 2020 - 2023	23
5.3	Economic Background	24
5.4	Treasury Management Practice (TMP1) – Credit and Counterparty Risk Management	33
5.5	Approved countries for investments	35
5.6	Treasury management scheme of delegation	36
5.7	The treasury management role of the section 151 officer	37
5.8	Glossary	39

Treasury Management Strategy Statement 2020/21

1 INTRODUCTION

1.1 Background

The Council is required to operate a balanced budget, which broadly means that cash raised during the year will meet cash expenditure. Part of the treasury management operation is to ensure that this cash flow is adequately planned, with cash being available when it is needed. Surplus monies are invested in low risk counterparties or instruments commensurate with the Council's low risk appetite, providing adequate liquidity initially before considering investment return.

The second main function of the treasury management service is the funding of the Council's capital plans. These capital plans provide a guide to the borrowing need of the Council, essentially the longer-term cash flow planning, to ensure that the Council can meet its capital spending obligations. This management of longer-term cash may involve arranging long or short-term loans, or using longer-term cash flow surpluses. On occasion, when it is prudent and economic, any debt previously drawn may be restructured to meet Council risk or cost objectives.

The contribution the treasury management function makes to the authority is critical, as the balance of debt and investment operations ensure liquidity or the ability to meet spending commitments as they fall due, either on day-to-day revenue or for larger capital projects. The treasury operations will see a balance of the interest costs of debt and the investment income arising from cash deposits affecting the available budget. Since cash balances generally result from reserves and balances, it is paramount to ensure adequate security of the sums invested, as a loss of principal will in effect result in a loss to the General Fund Balance.

Whilst any commercial initiatives or loans to third parties will impact on the treasury function, these activities are generally classed as non-treasury activities, (arising usually from capital expenditure), and are separate from the day to day treasury management activities.

CIPFA defines treasury management as:

"The management of the local authority's borrowing, investments and cash flows, its banking, money market and capital market transactions; the effective control of the risks associated with those activities; and the pursuit of optimum performance consistent with those risks."

Revised reporting was introduced in 2019/20 including the introduction of a capital strategy, to provide a longer-term focus to the capital plans, and greater reporting requirements surrounding any commercial activity undertaken under the Localism Act 2011. The capital strategy is being reported separately.

1.2 Reporting Requirements

1.2.1 Capital Strategy

The CIPFA revised 2017 Prudential and Treasury Management Codes require all local authorities to prepare an additional report, a capital strategy report, which will provide the following:

- a high-level long term overview of how capital expenditure, capital financing and treasury management activity contribute to the provision of services
- an overview of how the associated risk is managed
- the implications for future financial sustainability

Responsible Section/Team	Financial Services	Page	3
Responsible Author	Head of Finance	Version	v1
Date last amended	February 2018	Due for review	Feb 2019

Treasury Management Strategy Statement 2020/21

The aim of this capital strategy is to ensure that all elected members on the council fully understand the overall long-term policy objectives and resulting capital strategy requirements, governance procedures and risk appetite.

This capital strategy is reported separately from the Treasury Management Strategy Statement; non-treasury investments will be reported through the former. This ensures the separation of the core treasury function under security, liquidity and yield principles, and the policy and commercialism investments usually driven by expenditure on an asset. The capital strategy will show:

- The corporate governance arrangements for these types of activities;
- Any service objectives relating to the investments;
- The expected income, costs and resulting contribution;
- The debt related to the activity and the associated interest costs;
- The payback period (MRP policy);
- For non-loan type investments, the cost against the current market value;
- The risks associated with each activity.

Where a physical asset is being bought, details of market research, advisers used, (and their monitoring), ongoing costs and investment requirements and any credit information will be disclosed, including the ability to sell the asset and realise the investment cash.

Where the Council has borrowed to fund any non-treasury investment, there should also be an explanation of why borrowing was required and why the MHCLG Investment Guidance and CIPFA Prudential Code have not been adhered to.

If any non-treasury investment sustains a loss during the final accounts and audit process, the strategy and revenue implications will be reported through the same procedure as the capital strategy.

To demonstrate the proportionality between the treasury operations and the non-treasury operation, high-level comparators are shown throughout this report.

1.2.2 Treasury Management reporting

The Council is currently required to receive and approve, as a minimum, three main treasury reports each year, which incorporate a variety of policies, estimates and actuals.

Prudential and Treasury Indicators and Treasury Strategy (this report) - The first, and most important report covers:

- the capital plans (including prudential indicators);
- a Minimum Revenue Provision Policy or MRP (how residual capital expenditure is charged to revenue over time);
- the Treasury Management Strategy (how the investments and borrowings are to be organised) including treasury indicators; and
- an Investment Strategy (the parameters on how investments are to be managed).

This report is required to be adequately reviewed and scrutinised by the Cabinet before being recommended to the Council.

A Mid Year Treasury Management Report – This will update members with the progress of the capital position, amending prudential indicators as necessary, and whether the treasury strategy is meeting the strategy or whether any policies require revision. This is included within each of the Council's regular financial monitoring reports presented to the Cabinet.

Responsible Section/Team	Financial Services	Page	4
Responsible Author	Head of Finance	Version	v1
Date last amended	February 2018	Due for review	Feb 2019

Treasury Management Strategy Statement 2020/21

An Annual Treasury Report – This provides details of a selection of actual prudential and treasury indicators and actual treasury operations compared to the estimates within the strategy. This is included within the Council's end of year financial monitoring report presented to the Cabinet.

1.3 Treasury Management Strategy for 2020/21

The strategy for 2020/21 covers two main areas:

Capital issues

- the capital plans and the prudential indicators;
- the Minimum Revenue Provision (MRP) strategy.

Treasury management issues

- the current treasury position;
- treasury indicators which will limit the treasury risk and activities of the Council;
- prospects for interest rates;
- the borrowing strategy;
- policy on borrowing in advance of need;
- debt rescheduling;
- the investment strategy;
- creditworthiness policy; and
- policy on use of external service providers.

These elements cover the requirements of the Local Government Act 2003, the CIPFA Prudential Code, the CLG MRP Guidance, the CIPFA Treasury Management Code and the MHCLG Investment Guidance.

1.4 Training

The CIPFA Code requires the responsible officer to ensure that members with responsibility for treasury management receive adequate training in treasury management. This especially applies to members responsible for scrutiny. Financial training for members is undertaken each year in June.

The training needs of treasury management officers are reviewed annually.

1.5 Treasury management consultants

The Council uses Link Asset Services, Treasury solutions as its external treasury management advisors. However, the Council recognises that responsibility for treasury management decisions remains with the organisation at all times and will ensure that undue reliance is not placed upon our external service providers.

It also recognises that there is value in employing external providers of treasury management services in order to acquire access to specialist skills and resources. The Council will ensure that the terms of their appointment and the methods by which their value will be assessed are properly agreed and documented, and subjected to regular review.

The scope of investments within the Council's operations now includes both conventional treasury investments, and more commercial type investments, such as investment properties. The commercial type investments require specialist advisers, and the Council uses Taylor Weaver Ltd in relation to this activity.

Responsible Section/Team	Financial Services	Page	5
Responsible Author	Head of Finance	Version	v1
Date last amended	February 2018	Due for review	Feb 2019

Treasury Management Strategy Statement 2020/21

2 THE CAPITAL PRUDENTIAL INDICATORS 2020/21 – 2022/23 & MRP STATEMENT

The Council's capital expenditure plans are the key driver of treasury management activity. The capital expenditure plans are reflected in prudential indicators, which are designed to assist members' overview and confirm capital expenditure plans.

2.1 Capital Expenditure

This prudential indicator is a summary of the Council's capital expenditure plans, both those agreed previously, and those forming part of this budget cycle.

Capital Expenditure	2017/18 Actual £000	2018/19 Actual £000	2019/20 Estimate £000	2020/21 Estimate £000	2021/22 Estimate £000	2022/23 Estimate £000
Operational Services:						
Operations & Communities	472	606	1,684	382	770	790
Customer Services & IT	6	-	-	-	-	-
Regeneration (incl Spinning Point)	6,233	2,496	5,151	7,800	-	-
Corporate Services and Buildings	149	200	578	144	75	75
Housing	587	889	2,026	1,000	1,100	1,100
Commercial Activities: *						
Investment Construction (Council July 18)	-	-	3,898	-	-	-
Total	7,447	4,191	13,337	9,326	1,945	1,965

* Commercial activities / non-financial investments relate to areas such as capital expenditure on investment properties, loans to third parties etc.

Long term liabilities

The Council currently has two long-term liabilities in the form of a 25-year PWLB loan from 2010, for which the annual repayment of principal is £184k, and one from 2019, for which the annual repayment is £100k

The table below summarises the above capital expenditure plans and the available capital or revenue resources. Any shortfall of resources results in a funding need (borrowing). The main increases in net financing requirement during 2020/21 will be the construction of Spinning Point Phase 2, as approved by Council in December 2018, though this may be subject to further consideration.

Funded by:	2017/18 Actual £000	2018/19 Estimate £000	2019/20 Estimate £000	2020/21 Estimate £000	2021/22 Estimate £000	2022/23 Estimate £000
Capital receipts	2,614	161	686	144	110	110
Capital grants	3,325	3,158	7,323	947	947	947
Earmarked reserves contributions	345	49	365	-	-	-
In-year Revenue contributions (incl S106)	145	100	100	70	50	50
Total in-year resources	6,429	3,468	8,474	1,161	1,107	1,107
Therefore Net financing need for year	1,018	723	4,863	8,165	838	858
Commercial Activities included above						
Application of in-year resources	-	-	98	-	-	-
Net financing need	-	-	3,800	-	-	-
Percentage of total net financing need	-	-	78.1%	-	-	-

2.2 The Council's Borrowing Need (the Capital Financing Requirement)

Responsible Section/Team	Financial Services	Page	6
Responsible Author	Head of Finance	Version	v1
Date last amended	February 2018	Due for review	Feb 2019

Treasury Management Strategy Statement 2020/21

The second prudential indicator is the Council's Capital Financing Requirement (CFR). The CFR is simply the total historic outstanding capital expenditure which has not yet been paid for from either revenue or capital resources. It is essentially a measure of the Council's underlying borrowing need. Any capital expenditure above, which has not immediately been paid for, will increase the CFR.

The CFR does not increase indefinitely, as the minimum revenue provision (MRP) is a statutory annual revenue charge which broadly reduces the indebtedness in line with each assets life, and so charges the economic consumption of capital assets to the revenue account as they are used.

The CFR includes any other long term liabilities (e.g. PFI schemes, finance leases) brought onto the balance sheet. Whilst this increases the CFR, and therefore the Council's borrowing requirement, these types of scheme include a borrowing facility and so the Council is not required to separately borrow for these schemes. The Council currently has no such schemes within the CFR.

The Council is asked to approve the CFR projections below:

Capital Financing Requirement (CFR)	2017/18 Actual £000	2018/19 Actual £000	2019/20 Estimate £000	2020/21 Estimate £000	2021/22 Estimate £000	2022/23 Estimate £000
Opening CFR	9,069	8,751	8,203	12,331	20,544	20,548
Movement in CFR - Services (see below)	(318)	(548)	328	8,213	4	24
Movement in CFR - Commercial Activities	-	-	3,800	-	-	-
Closing CFR	8,751	8,203	12,331	20,544	20,548	20,572
Movement in CFR is represented by						
Net financing need for the year (see above)	286	723	4,863	8,949	740	760
Less MRP repayments	(604)	(1,271)	(735)	(736)	(736)	(736)
Movement in CFR	(318)	(548)	4,128	8,213	4	24

The movement in the CFR in 2020/21 is £8,213k, which includes the following major projects:

- The completion of construction of an investment property valued at £3.8m, approved in July 2019.
- The Spinning Point Phase 2 development of £7.8m funded by a PWLB loan over 30 years.
- The balance of £297k in financing need relates to the operational vehicle replacement plans, which will be met from internal borrowing for which MRP is already included within the budgets.
- The movement in the CFR could be significantly different dependent on which investment projects are progressed.

2.3 Core funds and expected investment balances

The application of resources (capital receipts, reserves etc.) to either finance capital expenditure or other budget decisions to support the revenue budget will have an ongoing impact on investments and borrowing unless resources are supplemented each year from new sources (asset sales etc.).

Detailed below are expected opening cash balances and the anticipated cash flow impacts of the MTFs and the Capital Programme.

Responsible Section/Team	Financial Services	Page	7
Responsible Author	Head of Finance	Version	v1
Date last amended	February 2018	Due for review	Feb 2019

Treasury Management Strategy Statement 2020/21

Cash Flow over the MTFS	2019/20 £000	2020/21 £000	2021/22 £000	2022/23 £000
Cash Balances at 1st April b/fwd	9,958	3,963	4,582	421
Non- Cash Budget items:				
Minimum Revenue Provision	735	736	736	736
Annual Pensions charge	1,500	915	915	915
3-yr Pre-payment of Pensions	-	(2,745)	-	-
Revenue Contribution to Capital Outlay	100	75	75	75
Application of Reserves				
NDR	-	-	-	-
Other Reserves - MTFS *	(511)	-	-	-
Capital Programme (CFR net impact)				
Vehicles	(863)	(439)	(675)	(690)
Spinning Point Ph 2	-	(3,900)	(3,900)	-
Investment Property Construction	(3,800)	-	-	-
Others	(200)	(810)	(105)	(105)
Use of Grants received in advance				
DFGs	(1,026)	-	-	-
Spinning Point Ph 1	(3,163)	-	-	-
Capital receipts	50	50	50	50
PWLB:				
Borrowing repayments - current loan	(234)	(479)	(674)	(674)
New Borrowing	2,000	7,800	0	0
Repayment of HCA Grant (part 2)	(483)	(483)	(483)	-
Contingency / Timing	(100)	(100)	(100)	(100)
Cash Balances at 31st March c/fwd	3,963	4,582	421	628

* As per the 2020/21 Technical Resolution.

Detailed below are estimates of the year end balances for each resource following the anticipated cash flow requirements above.

Year-end Resources	2017/18 Actual £000	2018/19 Actual £000	2019/20 Estimate £000	2020/21 Estimate £000	2021/22 Estimate £000	2022/23 Estimate £000
General Fund balance	1,000	1,000	1,000	1,000	1,000	1,000
Earmarked reserves	6,166	6,017	5,412	5,222	5,125	5,018
Capital receipts	2,480	2,469	1,857	1,763	1,797	1,703
Government Grants Unapplied	890	946	57	25	25	25
Additional Resources to fund the MTFS	-	-	735	736	736	736
Total Reserves	10,536	10,432	9,061	8,746	8,683	8,482
(Under)/over borrowing (see 3.1)	(5,623)	(5,259)	(7,621)	(8,513)	(9,191)	(9,889)
Expected resources	4,913	5,173	1,440	233	(508)	(1,407)
Cash Balances (see 2.3) *	7,339	9,958	8,585	5,732	5,732	5,871
Working capital *	2,426	4,785	7,145	5,499	6,240	7,278

* Working capital balances shown are estimated year end; these may be higher mid-year

Given the Council's current banking portfolio, the Cash and Cash Equivalents has been combined with Investments, rather than being shown as part of the working capital

Responsible Section/Team	Financial Services	Page	8
Responsible Author	Head of Finance	Version	v1
Date last amended	February 2018	Due for review	Feb 2019

Treasury Management Strategy Statement 2020/21

2.4 Minimum Revenue Provision Policy Statement

The Council is required to pay off an element of the accumulated General Fund capital spend each year (the CFR) through a revenue charge (the Minimum Revenue Provision - MRP), although it is also allowed to undertake additional voluntary payments if required (voluntary revenue provision - VRP).

DCLG Regulations have been issued which require the full Council to approve an **MRP Statement** in advance of each year. A variety of options are provided to councils, so long as there is a prudent provision. The Council is recommended to approve the following MRP Statement :

Since the 1st April 2008 all unsupported borrowing (including PFI and finance leases when applicable) has been repaid using the following MRP policy:

- **Asset Life Method** – MRP will be based on the estimated life of the assets, in accordance with the proposed regulations (this option must be applied for any expenditure capitalised under a Capitalisation Direction);

This provides for a reduction in the borrowing need over approximately the same term as the asset's life.

MRP Overpayments - A change introduced by the revised MHCLG MRP Guidance was the allowance that any charges made over the statutory Minimum Revenue Provision (MRP), Voluntary Revenue Provision (VRP) or overpayments, can, if needed, be reclaimed in later years if deemed necessary or prudent. In order for these sums to be reclaimed for use in the budget, this policy must disclose the cumulative overpayment made each year. In 2018/19 the Council made VRP overpayments of £657k.

Responsible Section/Team	Financial Services	Page	9
Responsible Author	Head of Finance	Version	v1
Date last amended	February 2018	Due for review	Feb 2019

Treasury Management Strategy Statement 2020/21

3 BORROWING

The capital expenditure plans set out in Section 2 provide details of the service activity of the Council. The treasury management function ensures that the Council's cash is organised in accordance with the the relevant professional codes, so that sufficient cash is available to meet this service activity. This will involve both the organisation of the cash flow and, where capital plans require, the organisation of appropriate borrowing facilities. The strategy covers the relevant treasury / prudential indicators, the current and projected debt positions and the annual investment strategy.

3.1 Current Portfolio Position

The Council's treasury portfolio position at 31 March 2019, with forward projections are summarised below. The table shows the actual external debt (the treasury management operations), against the underlying capital borrowing need (the Capital Financing Requirement - CFR), highlighting any over or under borrowing.

Borrowing Position	2017/18 Actual £000	2018/19 Actual £000	2019/20 Estimate £000	2020/21 Estimate £000	2021/22 Estimate £000	2022/23 Estimate £000
Debt at 1 st April	3,312	3,128	2,944	4,710	12,031	11,357
Debt Repayments	(184)	(184)	(234)	(479)	(674)	(674)
New Debt	-	-	2,000	7,800	-	-
Debt at 31st March	3,128	2,944	4,710	12,031	11,357	10,683
Original PWLB Loan	3,128	2,944	2,760	2,576	2,392	2,208
Futures Park Plot 5			1,950	1,850	1,750	1,650
Spinning Point Ph2				7,605	7,215	6,825
Capital Financing Requirement (CFR)	8,751	8,203	12,331	20,544	20,548	20,572
Under / (over) borrowing	5,623	5,259	7,621	8,513	9,191	9,889

Within the prudential indicators there are a number of key indicators to ensure that the Council operates its activities within well-defined limits. One of these is that the Council needs to ensure that its gross debt, does not, except in the short term, exceed the total of the CFR in the preceding year plus the estimates of any additional CFR for 2020/21 and the following two financial years. This allows some flexibility for limited early borrowing for future years, but ensures that borrowing is not undertaken for revenue purposes.

The Head of Financial Services reports that the Council complied with this prudential indicator in 2019/20. Given the MTFs cash-flow impacts of current commitments, existing plans, and the proposals in the main budget report, as explained at 2.3 above, the Head of Financial Services recommends that the limits to borrowing activity are increased as indicated below.

3.2. Treasury Indicators: Limits to Borrowing Activity

The Operational Boundary. This is the limit beyond which external debt is not normally expected to exceed. In most cases, this would be a similar figure to the CFR, but may be lower or higher depending on the levels of actual debt.

Operational boundary	2017/18 £000	2018/19 £000	2019/20 £000	2020/21 £000	2021/22 £000	2022/23 £000
Services Debt	4,500	9,500	10,500	18,750	18,750	18,750
Commercial Debt	-	-	2,000	2,000	2,000	2,000
Total External Debt	4,500	9,500	12,500	20,750	20,750	20,750

Responsible Section/Team	Financial Services	Page	10
Responsible Author	Head of Finance	Version	v1
Date last amended	February 2018	Due for review	Feb 2019

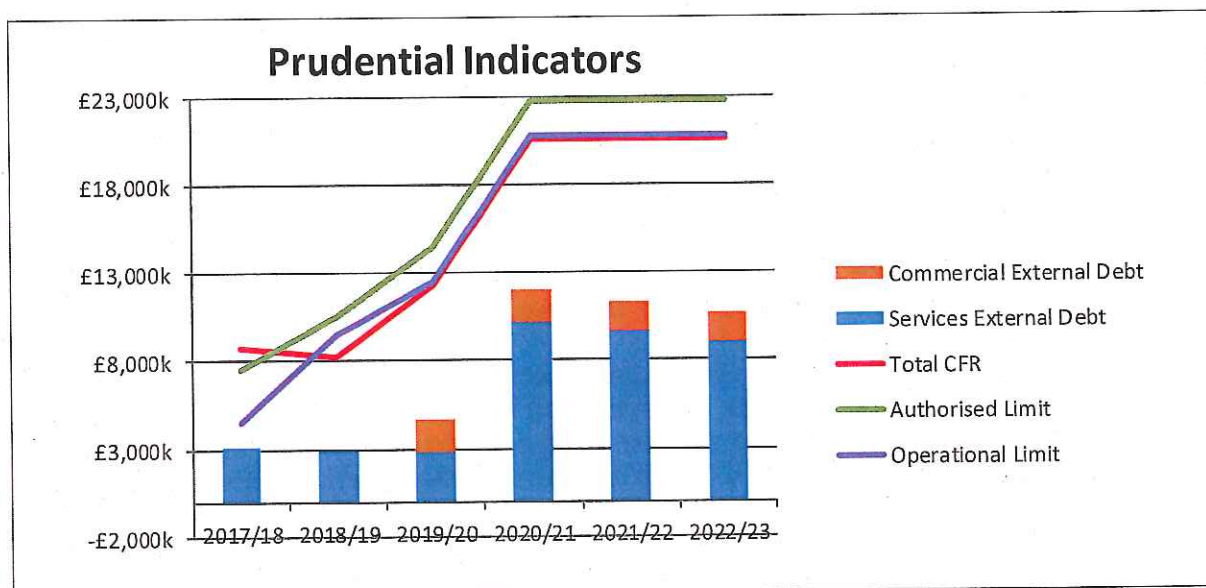
Treasury Management Strategy Statement 2020/21

The Authorised Limit for external debt. A further key prudential indicator represents a control on the maximum level of borrowing. This represents a limit beyond which external debt is prohibited, and this limit needs to be set or revised by the full Council. It reflects the level of external debt which, while not desired, could be afforded in the short term, but is not sustainable in the longer term.

1. This is the statutory limit determined under section 3 (1) of the Local Government Act 2003. The Government retains an option to control either the total of all councils' plans, or those of a specific council, although this power has not yet been exercised.
2. The Council is asked to approve the following authorised limit:

Authorised limit	2017/18 £000	2018/19 £000	2019/20 £000	2020/21 £000	2021/22 £000	2022/23 £000
Services Debt	7,500	10,500	12,500	20,750	20,750	20,750
Commercial Debt	-	-	2,000	2,000	2,000	2,000
Debt	7,500	10,500	14,500	22,750	22,750	22,750

In graphical terms the relationship between the total CFR, the current external borrowing and the suggested authorised and operational debt boundaries can be shown as follows. The prudent level of future potential borrowing is clearly visible as the gap between the predicted CFR and the current external borrowing level.



3.3. Prospects for Interest Rates (from Link Asset Services on 31/01/2020).

The Council has appointed Link Asset Services as its treasury advisor and part of their service is to assist the Council to formulate a view on interest rates. The following table gives the Link Asset Services central view.

Responsible Section/Team	Financial Services	Page	11
Responsible Author	Head of Finance	Version	v1
Date last amended	February 2018	Due for review	Feb 2019

Treasury Management Strategy Statement 2020/21

Link Asset Services Interest Rate View														
	Dec-19	Mar-20	Jun-20	Sep-20	Dec-20	Mar-21	Jun-21	Sep-21	Dec-21	Mar-22	Jun-22	Sep-22	Dec-22	Mar-23
Bank Rate View	0.75	0.75	0.75	0.75	0.75	1.00	1.00	1.00	1.00	1.00	1.25	1.25	1.25	1.25
3 Month LIBID	0.70	0.70	0.70	0.80	0.90	1.00	1.00	1.00	1.10	1.20	1.30	1.30	1.30	1.30
6 Month LIBID	0.80	0.80	0.80	0.90	1.00	1.10	1.10	1.20	1.30	1.40	1.50	1.50	1.50	1.50
12 Month LIBID	1.00	1.00	1.00	1.10	1.20	1.30	1.30	1.40	1.50	1.60	1.70	1.70	1.70	1.70
5yr PWLB Rate	2.30	2.40	2.40	2.50	2.50	2.60	2.70	2.80	2.90	2.90	3.00	3.10	3.20	3.20
10yr PWLB Rate	2.60	2.70	2.70	2.70	2.80	2.90	3.00	3.10	3.20	3.20	3.30	3.30	3.40	3.50
25yr PWLB Rate	3.20	3.30	3.40	3.40	3.50	3.60	3.70	3.70	3.80	3.90	4.00	4.00	4.10	4.10
50yr PWLB Rate	3.10	3.20	3.30	3.30	3.40	3.50	3.60	3.60	3.70	3.80	3.90	3.90	4.00	4.00

The above forecasts have been based on an assumption that there is an agreed deal on Brexit, including agreement on the terms of trade between the UK and EU, at some point in time. The result of the general election has removed much uncertainty around this major assumption. However, it does not remove uncertainty around whether agreement can be reached with the EU on a trade deal within the short time to December 2020, as the prime minister has pledged.

It has been little surprise that the Monetary Policy Committee (MPC) has left Bank Rate unchanged at 0.75% so far in 2019 due to the ongoing uncertainty over Brexit and the outcome of the general election. In its meeting on 7 November, the MPC became more dovish due to increased concerns over the outlook for the domestic economy if Brexit uncertainties were to become more entrenched, and for weak global economic growth: if those uncertainties were to materialise, then the MPC were likely to cut Bank Rate. However, if they were both to dissipate, then rates would need to rise at a "gradual pace and to a limited extent". Brexit uncertainty has had a dampening effect on UK GDP growth in 2019, especially around mid-year. There is still some residual risk that the MPC could cut Bank Rate as the UK economy is still likely to only grow weakly in 2020 due to continuing uncertainty over whether there could effectively be a no deal Brexit in December 2020 if agreement on a trade deal is not reached with the EU. Until that major uncertainty is removed, or the period for agreeing a deal is extended, it is unlikely that the MPC would raise Bank Rate.

Bond yields / PWLB rates. There has been much speculation during 2019 that the bond market has gone into a bubble, as evidenced by high bond prices and remarkably low yields. However, given the context that there have been heightened expectations that the US was heading for a recession in 2020, and a general background of a downturn in world economic growth, together with inflation generally at low levels in most countries and expected to remain subdued, conditions are ripe for low bond yields. While inflation targeting by the major central banks has been successful over the last thirty years in lowering inflation expectations, the real equilibrium rate for central rates has fallen considerably due to the high level of borrowing by consumers: this means that central banks do not need to raise rates as much now to have a major impact on consumer spending, inflation, etc. This has pulled down the overall level of interest rates and bond yields in financial markets over the last thirty years. We have therefore seen over the last year, many bond yields up to ten years in the Eurozone actually turn negative. In addition, there has, at times, been an inversion of bond yields in the US whereby ten-year yields have fallen below shorter-term yields. In the past, this has been a precursor of a recession. The other side of this coin is that bond prices are elevated, as investors would be expected to be moving out of riskier assets i.e. shares, in anticipation of a downturn in corporate earnings and so selling out of equities. However, stock markets are also currently at high levels as some investors have focused on chasing returns in the context of dismal ultra-low interest rates on cash deposits.

Responsible Section/Team	Financial Services	Page	12
Responsible Author	Head of Finance	Version	v1
Date last amended	February 2018	Due for review	Feb 2019

Treasury Management Strategy Statement 2020/21

During the first half of 2019-20 to 30 September, gilt yields plunged and caused a near halving of longer term PWLB rates to completely unprecedented historic low levels. There is though, an expectation that financial markets have gone too far in their fears about the degree of the downturn in US and world growth. If, as expected, the US only suffers a mild downturn in growth, bond markets in the US are likely to sell off and that would be expected to put upward pressure on bond yields, not only in the US, but also in the UK due to a correlation between US treasuries and UK gilts; at various times this correlation has been strong but at other times weak. However, forecasting the timing of this, and how strong the correlation is likely to be, is very difficult to forecast with any degree of confidence. Changes in UK Bank Rate will also impact on gilt yields.

One potential danger that may be lurking in investor minds is that Japan has become mired in a twenty-year bog of failing to get economic growth and inflation up off the floor, despite a combination of massive monetary and fiscal stimulus by both the central bank and government. Investors could be fretting that this condition might become contagious to other western economies.

Another danger is that unconventional monetary policy post 2008, (ultra-low interest rates plus quantitative easing), may end up doing more harm than good through prolonged use. Low interest rates have encouraged a debt-fuelled boom that now makes it harder for central banks to raise interest rates. Negative interest rates could damage the profitability of commercial banks and so impair their ability to lend and / or push them into riskier lending. Banks could also end up holding large amounts of their government's bonds and so create a potential doom loop. (A doom loop would occur where the credit rating of the debt of a nation was downgraded which would cause bond prices to fall, causing losses on debt portfolios held by banks and insurers, so reducing their capital and forcing them to sell bonds – which, in turn, would cause further falls in their prices etc.). In addition, the financial viability of pension funds could be damaged by low yields on holdings of bonds.

The overall longer run future trend is for gilt yields, and consequently PWLB rates, to rise, albeit gently. From time to time, gilt yields, and therefore PWLB rates, can be subject to exceptional levels of volatility due to geo-political, sovereign debt crisis, emerging market developments and sharp changes in investor sentiment. Such volatility could occur at any time during the forecast period.

In addition, PWLB rates are subject to ad hoc decisions by H.M. Treasury to change the margin over gilt yields charged in PWLB rates: such changes could be up or down. It is not clear that if gilt yields were to rise back up again by over 100bps within the next year or so, whether H M Treasury would remove the extra 100 bps margin implemented on 9.10.19.

Economic and interest rate forecasting remains difficult with so many influences weighing on UK gilt yields and PWLB rates. The above forecasts, (and MPC decisions), will be liable to further amendment depending on how economic data and developments in financial markets transpire over the next year. Geopolitical developments, especially in the EU, could also have a major impact. Forecasts for average investment earnings beyond the three-year time horizon will be heavily dependent on economic and political developments.

Investment and borrowing rates

- Investment returns are likely to remain low during 2020/21 with little increase in the following two years. However, if major progress was made with an agreed Brexit, then there is upside potential for earnings.
- Borrowing interest rates were on a major falling trend during the first half of 2019-20 but then jumped up by 100 bps on 9th October 2019. The policy of avoiding new borrowing by running down spare cash balances has served local authorities well over the last few years. However, the unexpected increase of 100 bps in PWLB rates requires a major rethink of local authority treasury management strategy and risk management. Now that

Responsible Section/Team	Financial Services	Page	13
Responsible Author	Head of Finance	Version	v1
Date last amended	February 2018	Due for review	Feb 2019

Treasury Management Strategy Statement 2020/21

the gap between longer term borrowing rates and investment rates has materially widened, and in the long term Bank Rate is not expected to rise above 2.5%, it is unlikely that this authority will do any further longer term borrowing for the next three years, or until such time as the extra 100 bps margin is removed (amend as appropriate).

- While this authority will not be able to avoid borrowing to finance new capital expenditure, to replace maturing debt and the rundown of reserves, (amend as appropriate), there will be a cost of carry, (the difference between higher borrowing costs and lower investment returns), to any new short or medium-term borrowing that causes a temporary increase in cash balances as this position will, most likely, incur a revenue cost.

3.4 Borrowing Strategy

The Council has been maintaining an under-borrowed position. This means that the capital borrowing need (the Capital Financing Requirement), has not been fully funded with loan debt as cash supporting the Council's reserves, balances and cash flow has been used as a temporary measure. This strategy was prudent in the past, however, reserves and cash are being used to support the MTFs and the Capital Programme, leading to an increasing need for future borrowing.

Against this background and the risks within the economic forecast, caution will be adopted with the 2020/21 treasury operations. The Head of Finance will monitor interest rates in financial markets and adopt a pragmatic approach to changing circumstances:

- *if it was felt that there was a significant risk of a sharp FALL in long and short term rates, e.g. due to a marked increase of risks around relapse into recession or of risks of deflation, then long term borrowings will be postponed, and potential rescheduling from fixed rate funding into short term borrowing will be considered.*
- *if it was felt that there was a significant risk of a much sharper RISE in long and short term rates than that currently forecast, perhaps arising from an acceleration in the start date and in the rate of increase in central rates in the USA and UK, an increase in world economic activity or a sudden increase in inflation risks, then the portfolio position will be re-appraised. Most likely, fixed rate funding will be drawn whilst interest rates are still lower than they will be in the next few years.*

Any decisions will be reported to Cabinet at the next available opportunity.

3.5 Policy on Borrowing in Advance of Need

The Council will not borrow more, than or in advance of its needs, purely in order to profit from the investment of the extra sums borrowed. Any decision to borrow in advance will be within forward approved Capital Financing Requirement estimates, and will be considered carefully to ensure that value for money can be demonstrated and that the Council can ensure the security of such funds.

Borrowing in advance will be made within the constraints that:

- It will be limited to no more than 100% of the expected increase in borrowing need (CFR) over the three year planning period; and
- Would not look to borrow more than 18 months in advance of need.

Risks associated with any borrowing in advance activity will be subject to prior appraisal and subsequent reporting through the mid-year or annual reporting mechanism.

Responsible Section/Team	Financial Services	Page	14
Responsible Author	Head of Finance	Version	v1
Date last amended	February 2018	Due for review	Feb 2019

Treasury Management Strategy Statement 2020/21

3.6 Debt Rescheduling

As short term borrowing rates will be considerably cheaper than longer term fixed interest rates, there may be potential opportunities to generate savings by switching from long term debt to short term debt. However, these savings will need to be considered in the light of the current treasury position and the size of the cost of debt repayment (premiums incurred).

The reasons for any rescheduling to take place will include:

- the generation of cash savings and / or discounted cash flow savings;
- helping to fulfil the treasury strategy;
- enhance the balance of the portfolio (amend the maturity profile and/or the balance of volatility).

Consideration will also be given to identify if there is any residual potential for making savings by running down investment balances to repay debt prematurely as short term rates on investments are likely to be lower than rates paid on current debt.

All rescheduling will be reported to the Cabinet, at the earliest meeting following its action.

3.7 Municipal Bond Agency

It is likely that the Municipal Bond Agency will be offering loans to local authorities in the future. The Agency hopes that the borrowing rates will be lower than those offered by the Public Works Loan Board (PWLB). This Authority may consider use of this new source of borrowing as and when appropriate.

Responsible Section/Team	Financial Services	Page	15
Responsible Author	Head of Finance	Version	v1
Date last amended	February 2018	Due for review	Feb 2019

4 ANNUAL INVESTMENT STRATEGY

4.1 Investment Policy

The MHCLG and CIPFA have extended the meaning of 'investments' to include both financial and non-financial investments. This report deals solely with financial investments, (as managed by the treasury management team). Non-financial investments, essentially the purchase of income yielding assets, are covered in the Capital Strategy, (a separate report).

The Council's investment policy has regard to the following: -

- MHCLG's Guidance on Local Government Investments ("the Guidance")
- CIPFA Treasury Management in Public Services Code of Practice and Cross Sectoral Guidance Notes 2017 ("the Code")
- CIPFA Treasury Management Guidance Notes 2018

The Council's investment priorities will be security first, portfolio liquidity second and then yield, (return).

The above guidance from the MHCLG and CIPFA place a high priority on the management of risk. This authority has adopted a prudent approach to managing risk and defines its risk appetite by the following means: -

1. Minimum acceptable **credit criteria** are applied in order to generate a list of highly creditworthy counterparties. This also enables diversification and thus avoidance of concentration risk. The key ratings used to monitor counterparties are the short term and long-term ratings.
2. **Other information:** ratings will not be the sole determinant of the quality of an institution; it is important to continually assess and monitor the financial sector on both a micro and macro basis and in relation to the economic and political environments in which institutions operate. The assessment will also take account of information that reflects the opinion of the markets. To achieve this consideration the Council will engage with its advisors to maintain a monitor on market pricing such as "credit default swaps" and overlay that information on top of the credit ratings.

Other information sources used will include the financial press, share price and other such information pertaining to the banking sector in order to establish the most robust scrutiny process on the suitability of potential investment counterparties.

Investment instruments identified for use in the financial year are listed in appendix 5.4 under the 'Specified' and 'Non-Specified' Investments categories. Counterparty limits will be as set through the Council's Treasury Management Practices – Schedules.

4.2 Creditworthiness policy

The primary principle governing the Council's investment criteria is the security of its investments, although the yield or return on the investment is also a key consideration. After this main principle the Council will ensure that:

- It maintains a policy covering both the categories of investment types it will invest in, criteria for choosing investment counterparties with adequate security, and monitoring their security. This is set out in the Specified and Non-Specified investment sections below; and
- It has sufficient liquidity in its investments. For this purpose it will set out procedures for determining the maximum periods for which funds may prudently be committed. These

Responsible Section/Team	Financial Services	Page	16
Responsible Author	Head of Finance	Version	v1
Date last amended	February 2018	Due for review	Feb 2019

Treasury Management Strategy Statement 2020/21

procedures also apply to the Council's prudential indicators covering the maximum principal sums invested.

The Head of Finance will maintain a counterparty list in compliance with the following criteria and will revise the criteria and submit them to Council for approval as necessary. These criteria are separate to that which determines which types of investment instrument are either specified or non-specified as it provides an overall pool of counterparties considered high quality which the Council may use, rather than defining what types of investment instruments are to be used.

Credit rating information is supplied by Link Asset Services, our treasury advisors, on all active counterparties that comply with the criteria below. Any counterparty failing to meet the criteria would be omitted from the counterparty (dealing) list. Any rating changes, rating watches (notification of a likely change), rating outlooks (notification of a possible longer term change) are provided to officers almost immediately after they occur and this information is considered before dealing. For instance, a negative rating watch applying to a counterparty at the minimum Council criteria will be suspended from use, with all others being reviewed in light of market conditions.

The criteria for providing a pool of high quality investment counterparties (both Specified and Non-specified investments) is:

- Banks 1 - good credit quality – the Council will only use banks which:
 - i. are UK banks; and/or
 - ii. are non-UK and domiciled in a country which has a minimum sovereign long term rating of AAAand have, as a minimum, the following Fitch, Moody's and Standard and Poors credit ratings (where rated):
 - i. Short term - F1
 - ii. Long term – A
- Banks 2 – Part nationalised UK banks –Royal Bank of Scotland. These banks can be included if they continue to be part nationalised or they meet the ratings in Banks 1 above.
- Banks 3 – The Council's own banker for transactional purposes if the bank falls below the above criteria, although in this case balances will be minimised in both monetary size and time.
- Bank subsidiary and treasury operation -. The Council will use these where the parent bank has provided an appropriate guarantee or has the necessary ratings outlined above.
- Local authorities, parish councils etc
- Money Market Funds – using only those with AAA long-term rating backed up with lowest volatility rating (MR1+)
- Supranational institutions
- Rossendale Leisure Trust to a maximum of £100k
- Other related parties (where a charge can be placed on land or equity to preserve the Council's rights to its resources).

Responsible Section/Team	Financial Services	Page	17
Responsible Author	Head of Finance	Version	v1
Date last amended	February 2018	Due for review	Feb 2019

Treasury Management Strategy Statement 2020/21

UK banks – ring fencing

- The largest UK banks, (those with more than £25bn of retail / Small and Medium-sized Enterprise (SME) deposits), are required, by UK law, to separate core retail banking services from their investment and international banking activities by 1st January 2019. This is known as “ring-fencing”. Whilst smaller banks with less than £25bn in deposits are exempt, they can choose to opt up. Several banks are very close to the threshold already and so may come into scope in the future regardless.
- Ring-fencing is a regulatory initiative created in response to the global financial crisis. It mandates the separation of retail and SME deposits from investment banking, in order to improve the resilience and resolvability of banks by changing their structure. In general, simpler, activities offered from within a ring-fenced bank, (RFB), will be focused on lower risk, day-to-day core transactions, whilst more complex and “riskier” activities are required to be housed in a separate entity, a non-ring-fenced bank, (NRFB). This is intended to ensure that an entity’s core activities are not adversely affected by the acts or omissions of other members of its group.
- While the structure of the banks included within this process may have changed, the fundamentals of credit assessment have not. The Council will continue to assess the new-formed entities in the same way that it does others and those with sufficiently high ratings, (and any other metrics considered), will be considered for investment purposes.

4.3 Other Considerations

Country and sector considerations

Due care will be taken to consider the country, group and sector exposure of the Council’s investments. For the foreseeable future this Council will only invest in UK based institutions.

Use of additional information other than credit ratings.

Additional requirements under the Code require the Council to supplement credit rating information. Whilst the above criteria relies primarily on the application of credit ratings to provide a pool of appropriate counterparties for officers to use, additional operational market information will be applied before making any specific investment decision from the agreed pool of counterparties. This additional market information (for example Credit Default Swaps, negative rating watches/outlooks) will be applied to compare the relative security of differing investment counterparties.

Time and monetary limits applying to investments.

All investments will be made for no more than 365 days, i.e short-term.

The proposed criteria for Specified and Non-Specified investments are shown in Appendix 5 for approval.

4.4 Investment Strategy

In-house funds. Investments will be made with reference to the core balance and cash flow requirements and the outlook for short-term interest rates (i.e. rates for investments up to 12 months).

Responsible Section/Team	Financial Services	Page	18
Responsible Author	Head of Finance	Version	v1
Date last amended	February 2018	Due for review	Feb 2019

Treasury Management Strategy Statement 2020/21

Investment returns expectations.

On the assumption that the UK and EU agree a Brexit deal including the terms of trade by the end of 2020 or soon after, then Bank Rate is forecast to increase only slowly over the next few years to reach 1.00% by quarter 1 2023. Bank Rate forecasts for financial year ends (March) are:

- Q1 2021 0.75%
- Q1 2022 1.00%
- Q1 2023 1.25%

The suggested budgeted investment earnings rates for returns on investments placed for periods up to about three months during each financial year are as follows:

- 2019/20 0.75%
 - 2020/21 0.75%
 - 2021/22 1.00%
 - 2022/23 1.25%
 - 2023/24 1.50%
 - 2024/25 1.75%
 - Later years 2.25%
- The overall balance of risks to economic growth in the UK is probably to the downside due to the weight of all the uncertainties over Brexit, as well as a softening global economic picture.
 - The balance of risks to increases in Bank Rate and shorter term PWLB rates are broadly similarly to the downside.
 - In the event that a Brexit deal is agreed with the EU and approved by Parliament, the balance of risks to economic growth and to increases in Bank Rate is likely to change to the upside.

Investment treasury indicator and limit

Total principal funds invested for greater than 365 days. These limits are set with regard to the Council's liquidity requirements and to reduce the need for early sale of an investment, and are based on the availability of funds after each year-end.

The Council is asked to approve the treasury indicator and limit: -

Maximum principal sums invested > 365 days	2020/21 £m	2021/22 £m	2022/23 £m
Principal sums invested > 365 days	Nil	Nil	Nil

4.5 End of year investment report

At the end of the financial year, the Council will report on its investment activity as part of its Financial Monitoring.

4.6 External fund managers

The Council does not currently use external fund managers.

Responsible Section/Team	Financial Services	Page	19
Responsible Author	Head of Finance	Version	v1
Date last amended	February 2018	Due for review	Feb 2019

Treasury Management Strategy Statement 2020/21

5 APPENDICES

- 5.1 Prudential and treasury indicators
- 5.2 Interest rate forecasts
- 5.3 Economic background
- 5.4 Treasury Management practice - specified and non specified investments and limits
- 5.5 Approved countries for investments
- 5.6 Treasury management scheme of delegation
- 5.7 The treasury management role of the section 151 officer and other officers
- 5.8 Glossary

Responsible Section/Team	Financial Services	Page	20
Responsible Author	Head of Finance	Version	v1
Date last amended	February 2018	Due for review	Feb 2019

Treasury Management Strategy Statement 2020/21

5.1 THE CAPITAL PRUDENTIAL AND TREASURY INDICATORS 2020/21 – 2022/23 AND MRP STATEMENT

The Council's capital expenditure plans are the key driver of treasury management activity. The output of the capital expenditure plans is reflected in the prudential indicators, which are designed to assist members' overview and confirm capital expenditure plans.

5.1.1 Capital expenditure

Capital Expenditure	2017/18 Actual £000	2018/19 Actual £000	2019/20 Estimate £000	2020/21 Estimate £000	2021/22 Estimate £000	2022/23 Estimate £000
Operational Services:						
Operations & Communities	472	606	1,684	382	770	790
Customer Services & IT	6	-	-	-	-	-
Regeneration (<i>incl Spinning Point</i>)	6,233	2,496	5,151	7,800	-	-
Corporate Services and Buildings	149	200	578	144	75	75
Housing	587	889	2,026	1,000	1,100	1,100
Commercial Activities: *						
Investment Construction (Council July 18)	-	-	3,898	-	-	-
Total	7,447	4,191	13,337	9,326	1,945	1,965

5.1.3 Affordability prudential indicators

The previous sections cover the overall capital and control of borrowing prudential indicators, but within this framework prudential indicators are required to assess the affordability of the capital investment plans. These provide an indication of the impact of the capital investment plans on the Council's overall finances. The Council is asked to approve the following indicators:

a. Ratio of financing costs to net revenue stream

This indicator identifies the trend in the cost of capital (borrowing and other long term obligation costs net of investment income) against the net revenue stream.

Ratio of financing costs to net revenue stream	2017/18 Actual £000	2018/19 Actual £000	2019/20 Estimate £000	2020/21 Estimate £000	2021/22 Estimate £000	2022/23 Estimate £000
Interest Payable - Services	149	140	130	247	238	238
Interest Payable - Commercial Activities	-	-	32	32	32	32
Interest Receivable	(72)	(51)	(96)	(51)	(51)	(51)
Net cost of capital	77	89	66	228	219	219
Net Revenue Stream	9,241	9,182	10,070	10,064	10,104	10,104
Ratio of financing costs to net revenue stream	0.83%	0.97%	0.66%	2.27%	2.17%	2.17%

The estimates of financing costs include current commitments and the proposals in this budget report.

5.1.4 Maturity structure of borrowing

These gross limits are set to reduce the Council's exposure to large fixed rate sums falling due for refinancing, and are required for upper and lower limits.

The Council is asked to approve the following treasury indicators and limits:

Responsible Section/Team	Financial Services	Page	21
Responsible Author	Head of Finance	Version	v1
Date last amended	February 2018	Due for review	Feb 2019

Treasury Management Strategy Statement 2020/21

Treasury indicators and limits	2020/21	2021/22	2022/23
Interest rate Exposures	Upper	Upper	Upper
Limits on fixed interest rates based on net debt	100%	100%	100%
Limits on variable interest rates based on net debt	0%	0%	0%
Limits on fixed interest rates:			
• <i>Debt only</i>	100%	100%	100%
• <i>Investments only</i>	90%	90%	90%
Maturity Structure of fixed interest rate borrowing 2020/21			
	Lower	Upper	
Under 12 months	5%	10%	
12 months to 2 years	5%	10%	
2 years to 5 years	10%	20%	
5 years to 10 years	25%	30%	
10 years and above	40%	50%	
Maturity Structure of variable interest rate borrowing 2020/21			
	Lower	Upper	
Under 12 months	0%	0%	
12 months to 2 years	0%	0%	
2 years to 5 years	0%	0%	
5 years to 10 years	0%	0%	
10 years and above	0%	0%	

5.1.5. Control of interest rate exposure

Please see paragraphs 3.3, 3.4 and 4.4.

Responsible Section/Team	Financial Services	Page	22
Responsible Author	Head of Finance	Version	v1
Date last amended	February 2018	Due for review	Feb 2019

Treasury Management Strategy Statement 2020/21
APPENDIX 5.2 Interest Rate Forecast 2020-2023

Link Asset Services Interest Rate View	Mar-20	Jun-20	Sep-20	Dec-20	Mar-21	Jun-21	Sep-21	Dec-21	Mar-22	Jun-22	Sep-22	Dec-22	Mar-23
Bank Rate View	0.75	0.75	0.75	0.75	1.00	1.00	1.00	1.00	1.00	1.25	1.25	1.25	1.25
3 Month LIBID	0.70	0.70	0.80	0.90	1.00	1.00	1.00	1.10	1.20	1.30	1.30	1.30	1.30
6 Month LIBID	0.80	0.80	0.90	1.00	1.10	1.10	1.20	1.30	1.40	1.50	1.50	1.50	1.50
12 Month LIBID	1.00	1.00	1.10	1.20	1.30	1.30	1.40	1.50	1.60	1.70	1.70	1.70	1.70
5yr PWLB Rate	2.40	2.40	2.50	2.50	2.60	2.70	2.80	2.90	2.90	3.00	3.10	3.20	3.20
10yr PWLB Rate	2.70	2.70	2.70	2.80	2.90	3.00	3.10	3.20	3.20	3.30	3.30	3.40	3.50
25yr PWLB Rate	3.30	3.40	3.40	3.50	3.60	3.70	3.70	3.80	3.90	4.00	4.00	4.10	4.10
50yr PWLB Rate	3.20	3.30	3.30	3.40	3.50	3.60	3.60	3.70	3.80	3.90	3.90	4.00	4.00
Bank Rate													
Link Asset Services	0.75%	0.75%	0.75%	0.75%	1.00%	1.00%	1.00%	1.00%	1.00%	1.25%	1.25%	1.25%	1.25%
Capital Economics	0.75%	0.75%	0.75%	0.75%	0.75%	1.00%	1.00%	1.00%	-	-	-	-	-
5Yr PWLB Rate													
Link Asset Services	2.40%	2.40%	2.50%	2.50%	2.60%	2.70%	2.80%	2.90%	2.90%	3.00%	3.10%	3.20%	3.20%
Capital Economics	2.40%	2.50%	2.50%	2.60%	2.60%	2.80%	2.80%	2.90%	-	-	-	-	-
10yr PWLB Rate													
Link Asset Services	2.70%	2.70%	2.70%	2.80%	2.90%	3.00%	3.10%	3.20%	3.20%	3.30%	3.30%	3.40%	3.50%
Capital Economics	2.70%	2.70%	2.80%	2.80%	2.90%	3.00%	3.00%	3.10%	-	-	-	-	-
25yr PWLB Rate													
Link Asset Services	3.30%	3.40%	3.40%	3.50%	3.60%	3.70%	3.70%	3.80%	3.90%	4.00%	4.00%	4.10%	4.10%
Capital Economics	3.10%	3.10%	3.20%	3.20%	3.20%	3.30%	3.30%	3.40%	-	-	-	-	-
50yr PWLB Rate													
Link Asset Services	3.20%	3.30%	3.30%	3.40%	3.50%	3.60%	3.60%	3.70%	3.80%	3.90%	3.90%	4.00%	4.00%
Capital Economics	3.10%	3.10%	3.20%	3.20%	3.30%	3.40%	3.40%	3.50%	-	-	-	-	-

Responsible Section/Team	Financial Services	Page	23
Responsible Author	Head of Finance	Version	v3
Date last amended	February 2017	Due for review	Feb 2018

APPENDIX 5.3 Economic Background

UK. Brexit. 2019 has been a year of upheaval on the political front as Theresa May resigned as Prime Minister to be replaced by Boris Johnson on a platform of the UK leaving the EU on 31 October 2019, with or without a deal. However, MPs blocked leaving on that date and the EU agreed an extension to 31 January 2020. In late October, MPs approved an outline of a Brexit deal to enable the UK to leave the EU on 31 January. Now that the Conservative Government has gained a large overall majority in the general election on 12 December, this outline deal will be passed by Parliament by that date. However, there will still be much uncertainty as the detail of a trade deal will need to be negotiated by the current end of the transition period in December 2020, which the Prime Minister has pledged he will not extend. This could prove to be an unrealistically short timetable for such major negotiations that leaves open two possibilities; one, the need for an extension of negotiations, probably two years, or, a no deal Brexit in December 2020.

GDP growth has taken a hit from Brexit uncertainty during 2019; quarter three 2019 surprised on the upside by coming in at +0.4% q/q, +1.1% y/y. However, the peak of Brexit uncertainty during the final quarter appears to have suppressed quarterly growth to probably around zero. The economy is likely to tread water in 2020, with tepid growth around about 1% until there is more certainty after the trade deal deadline is passed.

While the Bank of England went through the routine of producing another **quarterly Inflation Report**, (now renamed the Monetary Policy Report), on 7 November, it is very questionable how much all the writing and numbers were worth when faced with the uncertainties of where the UK will be after the general election. The Bank made a change in their Brexit assumptions to now include a deal being eventually passed. Possibly the biggest message that was worth taking note of from the Monetary Policy Report, was an increase in concerns among MPC members around weak global economic growth and the potential for Brexit uncertainties to become entrenched and so delay UK economic recovery. Consequently, the MPC voted 7-2 to maintain Bank Rate at 0.75% but two members were sufficiently concerned to vote for an immediate Bank Rate cut to 0.5%. The MPC warned that if global growth does not pick up or Brexit uncertainties intensify, then a rate cut was now more likely. Conversely, if risks do recede, then a more rapid recovery of growth will require gradual and limited rate rises. The speed of recovery will depend on the extent to which uncertainty dissipates over the final terms for trade between the UK and

Responsible Section/Team	Financial Services	Page	24
Responsible Author	Head of Finance	Version	v1
Date last amended	Feb 2019	Due for review	Feb 2020

EU and by how much global growth rates pick up. The Bank revised its inflation forecasts down – to 1.25% in 2019, 1.5% in 2020, and 2.0% in 2021; hence, the MPC views inflation as causing little concern in the near future.

The **MPC meeting of 19 December** repeated the previous month's vote of 7-2 to keep Bank Rate on hold. Their key view was that there was currently 'no evidence about the extent to which policy uncertainties among companies and households had declined' i.e. they were going to sit on their hands and see how the economy goes in the next few months. The two members who voted for a cut were concerned that the labour market was faltering. On the other hand, there was a clear warning in the minutes that the MPC were concerned that "domestic unit labour costs have continued to grow at rates above those consistent with meeting the inflation target in the medium term".

If economic growth were to weaken considerably, the MPC has relatively little room to make a big impact with Bank Rate still only at 0.75%. It would therefore, probably suggest that it would be up to the Chancellor to provide help to support growth by way of **a fiscal boost** by e.g. tax cuts, increases in the annual expenditure budgets of government departments and services and expenditure on infrastructure projects, to boost the economy. The Government has already made moves in this direction and it made significant promises in its election manifesto to increase government spending by up to £20bn p.a., (this would add about 1% to GDP growth rates), by investing primarily in infrastructure. This is likely to be announced in the next Budget, probably in February 2020. The Chancellor has also amended the fiscal rules in November to allow for an increase in government expenditure.

As for **inflation** itself, CPI has been hovering around the Bank of England's target of 2% during 2019, but fell again in both October and November to a three-year low of 1.5%. It is likely to remain close to or under 2% over the next two years and so, it does not pose any immediate concern to the MPC at the current time. However, if there was a hard or no deal Brexit, inflation could rise towards 4%, primarily because of imported inflation on the back of a weakening pound.

With regard to the **labour market**, growth in numbers employed has been quite resilient through 2019 until the three months to September where it fell by 58,000. However, there was an encouraging pick up again in the three months to October to growth of 24,000, which showed that the labour

Responsible Section/Team	Financial Services	Page	25
Responsible Author	Head of Finance	Version	v1
Date last amended	Feb 2019	Due for review	Feb 2020

market was not about to head into a major downturn. The unemployment rate held steady at a 44-year low of 3.8% on the Independent Labour Organisation measure in October. Wage inflation has been steadily falling from a high point of 3.9% in July to 3.5% in October (3-month average regular pay, excluding bonuses). This meant that in real terms, (i.e. wage rates higher than CPI inflation), earnings grew by about 2.0%. As the UK economy is very much services sector driven, an increase in household spending power is likely to feed through into providing some support to the overall rate of economic growth in the coming months. The other message from the fall in wage growth is that employers are beginning to find it easier to hire suitable staff, indicating that supply pressure in the labour market is easing.

USA. President Trump's massive easing of fiscal policy in 2018 fuelled a temporary boost in consumption in that year which generated an upturn in the rate of growth to a robust 2.9% y/y. Growth in 2019 has been falling after a strong start in quarter 1 at 3.1%, (annualised rate), to 2.0% in quarter 2 and then 2.1% in quarter 3. The economy looks likely to have maintained a growth rate similar to quarter 3 into quarter 4; fears of a recession have largely dissipated. The strong growth in employment numbers during 2018 has weakened during 2019, indicating that the economy had been cooling, while inflationary pressures were also weakening. However, CPI inflation rose from 1.8% to 2.1% in November, a one year high, but this was singularly caused by a rise in gasoline prices.

The Fed finished its series of increases in rates to 2.25 – 2.50% in December 2018. In July 2019, it cut rates by 0.25% as a 'midterm adjustment' but flagged up that this was not intended to be seen as the start of a series of cuts to ward off a downturn in growth. It also ended its programme of quantitative tightening in August, (reducing its holdings of treasuries etc.). It then cut rates by 0.25% again in September and by another 0.25% in its October meeting to 1.50 – 1.75%.. At its September meeting it also said it was going to **start buying Treasuries again**, although this was not to be seen as a resumption of quantitative easing but rather an exercise to relieve liquidity pressures in the repo market. Despite those protestations, this still means that the Fed is again expanding its balance sheet holdings of government debt. In the first month, it will buy \$60bn, whereas it had been reducing its balance sheet by \$50bn per month during 2019. As it will be buying only short-term (under 12 months) Treasury bills, it is technically correct that this is not quantitative easing (which is purchase of long term debt). The Fed left rates unchanged in December. However, the accompanying statement was more optimistic

Responsible Section/Team	Financial Services	Page	26
Responsible Author	Head of Finance	Version	v1
Date last amended	Feb 2019	Due for review	Feb 2020

about the future course of the economy so this would indicate that further cuts are unlikely.

Investor confidence has been badly rattled by the progressive ramping up of increases in tariffs President Trump has made on Chinese imports and China has responded with increases in tariffs on American imports. **This trade war** is seen as depressing US, Chinese and world growth. In the EU, it is also particularly impacting Germany as exports of goods and services are equivalent to 46% of total GDP. It will also impact developing countries dependent on exporting commodities to China.

However, in November / December, progress has been made on agreeing a phase one deal between the US and China to roll back some of the tariffs; this gives some hope of resolving this dispute.

EUROZONE. Growth has been slowing from +1.8 % during 2018 to around half of that in 2019. Growth was +0.4% q/q (+1.2% y/y) in quarter 1, +0.2% q/q (+1.2% y/y) in quarter 2 and then +0.2% q/q, +1.1% in quarter 3; there appears to be little upside potential in the near future. German GDP growth has been struggling to stay in positive territory in 2019 and fell by -0.1% in quarter 2; industrial production was down 4% y/y in June with car production down 10% y/y. Germany would be particularly vulnerable to a no deal Brexit depressing exports further and if President Trump imposes tariffs on EU produced cars.

The European Central Bank (ECB) ended its programme of quantitative easing purchases of debt in December 2018, which then meant that the central banks in the US, UK and EU had all ended the phase of post financial crisis expansion of liquidity supporting world financial markets by quantitative easing purchases of debt. However, the downturn in EZ growth in the second half of 2018 and into 2019, together with inflation falling well under the upper limit of its target range of 0 to 2%, (but it aims to keep it near to 2%), has prompted the ECB to take new measures to stimulate growth. At its March meeting it said that it expected to leave interest rates at their present levels “at least through the end of 2019”, but that was of little help to boosting growth in the near term. Consequently, it announced a **third round of TLTROs**; this provides banks with cheap borrowing every three months from September 2019 until March 2021 that means that, although they will have only a two-year maturity, the Bank was making funds available until 2023, two years later than under its previous policy. As with the last round, the new TLTROs will include an incentive to encourage bank lending, and they will be capped at 30% of a bank’s eligible loans. However, since then, the downturn in EZ and world growth

Responsible Section/Team	Financial Services	Page	27
Responsible Author	Head of Finance	Version	v1
Date last amended	Feb 2019	Due for review	Feb 2020

has gathered momentum; at its meeting on 12 September it cut its deposit rate further into negative territory, from -0.4% to -0.5%, and announced a **resumption of quantitative easing purchases of debt for an unlimited period**. At its October meeting it said these purchases would start in November at €20bn per month - a relatively small amount compared to the previous buying programme. It also increased the maturity of the third round of TLTROs from two to three years. However, it is doubtful whether this loosening of monetary policy will have much impact on growth and, unsurprisingly, the ECB stated that governments would need to help stimulate growth by 'growth friendly' fiscal policy.

There were no policy changes in the December meeting, which was chaired for the first time by the new President of the ECB, Christine Lagarde. However, the outlook continued to be down beat about the economy; this makes it likely there will be further monetary policy stimulus to come in 2020. She did also announce a thorough review of how the ECB conducts monetary policy, including the price stability target. This review is likely to take all of 2020.

On the political front, Austria, Spain and Italy have been in the throes of **forming coalition governments** with some unlikely combinations of parties i.e. this raises questions around their likely endurance. The latest results of German state elections has put further pressure on the frail German CDU/SDP coalition government and on the current leadership of the CDU. The results of the Spanish general election in November have not helped the prospects of forming a stable coalition.

CHINA. Economic growth has been weakening over successive years, despite repeated rounds of central bank stimulus; medium term risks are increasing. Major progress still needs to be made to eliminate excess industrial capacity and the stock of unsold property, and to address the level of non-performing loans in the banking and shadow banking systems. In addition, there still needs to be a greater switch from investment in industrial capacity, property construction and infrastructure to consumer goods production.

JAPAN - has been struggling to stimulate consistent significant GDP growth and to get inflation up to its target of 2%, despite huge monetary and fiscal stimulus. It is also making little progress on fundamental reform of the economy.

Responsible Section/Team	Financial Services	Page	28
Responsible Author	Head of Finance	Version	v1
Date last amended	Feb 2019	Due for review	Feb 2020

WORLD GROWTH. Until recent years, world growth has been boosted by increasing **globalisation** i.e. countries specialising in producing goods and commodities in which they have an economic advantage and which they then trade with the rest of the world. This has boosted worldwide productivity and growth, and, by lowering costs, has also depressed inflation. However, the rise of China as an economic superpower over the last thirty years, which now accounts for nearly 20% of total world GDP, has unbalanced the world economy. The Chinese government has targeted achieving major world positions in specific key sectors and products, especially high tech areas and production of rare earth minerals used in high tech products. It is achieving this by massive financial support, (i.e. subsidies), to state owned firms, government directions to other firms, technology theft, restrictions on market access by foreign firms and informal targets for the domestic market share of Chinese producers in the selected sectors. This is regarded as being unfair competition that is putting western firms at an unfair disadvantage or even putting some out of business. It is also regarded with suspicion on the political front as China is an authoritarian country that is not averse to using economic and military power for political advantage. The current trade war between the US and China therefore needs to be seen against that backdrop. It is, therefore, likely that we are heading into a period where there will be a **reversal of world globalisation and a decoupling of western countries** from dependence on China to supply products. This is likely to produce a backdrop in the coming years of weak global growth and so weak inflation. **Central banks are, therefore, likely to come under more pressure to support growth by looser monetary policy measures and this will militate against central banks increasing interest rates.**

The trade war between the US and China is a major concern to **financial markets** due to the synchronised general weakening of growth in the major economies of the world, compounded by fears that there could even be a recession looming up in the US, though this is probably overblown. These concerns resulted in **government bond yields** in the developed world falling significantly during 2019. If there were a major worldwide downturn in growth, central banks in most of the major economies will have limited ammunition available, in terms of monetary policy measures, when rates are already very low in most countries, (apart from the US). There are also concerns about how much distortion of financial markets has already occurred with the current levels of quantitative easing purchases of debt by central banks and the use of negative central bank rates in some countries. The latest PMI survey statistics of economic health for the US, UK, EU and China have all been predicting a downturn

Responsible Section/Team	Financial Services	Page	29
Responsible Author	Head of Finance	Version	v1
Date last amended	Feb 2019	Due for review	Feb 2020

in growth; this confirms investor sentiment that the outlook for growth during the year ahead is weak.

INTEREST RATE FORECASTS

The interest rate forecasts provided by Link Asset Services in paragraph 3.3 are **predicated on an assumption of an agreement being reached on Brexit between the UK and the EU**. On this basis, while GDP growth is likely to be subdued in 2019 and 2020 due to all the uncertainties around Brexit depressing consumer and business confidence, an agreement on the detailed terms of a trade deal is likely to lead to a boost to the rate of growth in subsequent years. This could, in turn, increase inflationary pressures in the economy and so cause the Bank of England to resume a series of gentle increases in Bank Rate. Just how fast, and how far, those increases will occur and rise to, will be data dependent. The forecasts in this report assume a modest recovery in the rate and timing of stronger growth and in the corresponding response by the Bank in raising rates.

- In the event of an **orderly non-agreement exit in December 2020**, it is likely that the Bank of England would take action to cut Bank Rate from 0.75% in order to help economic growth deal with the adverse effects of this situation. This is also likely to cause short to medium term gilt yields to fall.
- If there were a **disorderly Brexit**, then any cut in Bank Rate would be likely to last for a longer period and also depress short and medium gilt yields correspondingly. Quantitative easing could also be restarted by the Bank of England. It is also possible that the government could act to protect economic growth by implementing fiscal stimulus.

The balance of risks to the UK

- The overall balance of risks to economic growth in the UK is probably even, but dependent on a successful outcome of negotiations on a trade deal.
- The balance of risks to increases in Bank Rate and shorter term PWLB rates are broadly similarly to the downside.
- In the event that a Brexit deal was agreed with the EU and approved by Parliament, the balance of risks to economic growth and to increases in Bank Rate is likely to change to the upside.

One risk that is both an upside and downside risk, is that all central banks are now working in very different economic conditions than before the 2008 financial crash as there has been a major increase in consumer and other debt due to the exceptionally low levels of borrowing rates that have prevailed since 2008. This means that the neutral rate of interest in an

Responsible Section/Team	Financial Services	Page	30
Responsible Author	Head of Finance	Version	v1
Date last amended	Feb 2019	Due for review	Feb 2020

economy, (i.e. the rate that is neither expansionary nor deflationary), is difficult to determine definitively in this new environment, although central banks have made statements that they expect it to be much lower than before 2008. Central banks could therefore either over or under do increases in central interest rates.

Downside risks to current forecasts for UK gilt yields and PWLB rates currently include:

- **Brexit** – if it were to cause significant economic disruption and a major downturn in the rate of growth.
- **Bank of England** takes action too quickly, or too far, over the next three years to raise Bank Rate and causes UK economic growth, and increases in inflation, to be weaker than we currently anticipate.
- A resurgence of the **Eurozone sovereign debt crisis**. In 2018, Italy was a major concern due to having a populist coalition government which made a lot of anti-austerity and anti-EU noise. However, in September 2019 there was a major change in the coalition governing Italy which has brought to power a much more EU friendly government; this has eased the pressure on Italian bonds. Only time will tell whether this new coalition based on an unlikely alliance of two very different parties will endure.
- Weak capitalisation of some **European banks**, particularly Italian banks.
- **German minority government**. In the German general election of September 2017, Angela Merkel’s CDU party was left in a vulnerable minority position dependent on the fractious support of the SPD party, as a result of the rise in popularity of the anti-immigration AfD party. The CDU has done badly in recent state elections but the SPD has done particularly badly and this has raised a major question mark over continuing to support the CDU. Angela Merkel has stepped down from being the CDU party leader but she intends to remain as Chancellor until 2021.
- **Other minority EU governments**. Austria, Finland, Sweden, Spain, Portugal, Netherlands and Belgium also have vulnerable minority governments dependent on coalitions which could prove fragile.
- **Austria, the Czech Republic, Poland and Hungary** now form a strongly anti-immigration bloc within the EU. There has also been rising anti-immigration sentiment in Germany and France.
- In October 2019, the IMF issued a report on the World Economic Outlook which flagged up a synchronised slowdown in world growth. However, it also flagged up that there was **potential for a rerun of the 2008 financial crisis**, but this time centred on the huge debt binge

Responsible Section/Team	Financial Services	Page	31
Responsible Author	Head of Finance	Version	v1
Date last amended	Feb 2019	Due for review	Feb 2020

accumulated by corporations during the decade of low interest rates. This now means that there are corporates who would be unable to cover basic interest costs on **some \$19trn of corporate debt in major western economies**, if world growth was to dip further than just a minor cooling. This debt is mainly held by the shadow banking sector i.e. pension funds, insurers, hedge funds, asset managers etc., who, when there is \$15trn of corporate and government debt now yielding negative interest rates, have been searching for higher returns in riskier assets. Much of this debt is only marginally above investment grade so any rating downgrade could force some holders into a fire sale, which would then depress prices further and so set off a spiral down. The IMF's answer is to suggest imposing higher capital charges on lending to corporates and for central banks to regulate the investment operations of the shadow banking sector. In October 2019, the deputy Governor of the Bank of England also flagged up the dangers of banks and the shadow banking sector lending to corporates, especially highly leveraged corporates, which had risen back up to near pre-2008 levels.

- **Geopolitical risks**, for example in North Korea, but also in Europe and the Middle East, which could lead to increasing safe haven flows.

Upside risks to current forecasts for UK gilt yields and PWLB rates

- **Brexit** – if agreement was reached all round that removed all threats of economic and political disruption between the EU and the UK.
- The **Bank of England is too slow** in its pace and strength of increases in Bank Rate and, therefore, allows inflationary pressures to build up too strongly within the UK economy, which then necessitates a later rapid series of increases in Bank Rate faster than we currently expect.
- **UK inflation**, whether domestically generated or imported, returning to sustained significantly higher levels causing an increase in the inflation premium inherent to gilt yields.

Responsible Section/Team	Financial Services	Page	32
Responsible Author	Head of Finance	Version	v1
Date last amended	Feb 2019	Due for review	Feb 2020

Appendix 5.4 Treasury Management Practice (TMP1) – specified and non specified investments and limits

The CLG issued Investment Guidance in 2010, and this forms the structure of the Council's policy below. These guidelines do not apply to either trust funds or pension funds which operate under a different regulatory regime.

The key intention of the Guidance is to maintain the current requirement for councils to invest prudently, and that priority is given to security and liquidity before yield. In order to facilitate this objective the guidance requires this Council to have regard to the CIPFA publication Treasury Management in the Public Services: Code of Practice and Cross-Sectoral Guidance Notes. This Council adopted the Code on 24th February 2010 and will apply its principles to all investment activity. In accordance with the Code, the Head of Financial Services has produced its Treasury Management Practices (TMPs). This part, TMP 1, covering investment counterparty policy requires approval each year.

Annual Investment Strategy

The key requirements of both the Code and the investment guidance are to set an annual investment strategy, as part of its annual treasury strategy for the following year, covering the identification and approval of following:

- The strategy guidelines for choosing and placing investments, particularly non-specified investments.
- The principles to be used to determine the maximum periods for which funds can be committed.
- Specified investments that the Council will use. These are high security (i.e. high credit rating, although this is defined by the Council, and no guidelines are given), and high liquidity investments in sterling and with a maturity of no more than a year.
- Non-specified investments, clarifying the greater risk implications, identifying the general types of investment that may be used and a limit to the overall amount of various categories that can be held at any time.

The investment policy proposed for the Council is:

Strategy Guidelines

The main strategy guidelines are contained in the body of the treasury strategy statement.

Specified Investments

These investments are sterling investments of not more than one-year maturity, or those which could be for a longer period but where the Council has the right to be repaid within 12 months if it wishes. These are considered low risk assets where the possibility of loss of principal or investment income is small. These would include sterling investments which would not be defined as capital expenditure with:

1. The UK Government (such as the Debt Management Account deposit facility, UK Treasury Bills or a Gilt with less than one year to maturity).
2. Supranational bonds of less than one year's duration.
3. A local authority, parish council or community council.
4. Pooled investment vehicles (such as money market funds) that have been awarded a high credit rating by a credit rating agency. For category 4 this covers pooled investment vehicles, such as money market funds, rated A by Standard and Poor's, Moody's or Fitch rating agencies.

Responsible Section/Team	Financial Services	Page	33
Responsible Author	Head of Finance	Version	v1
Date last amended	Feb 2019	Due for review	Feb 2020

Treasury Management Strategy Statement 2019/20

5. A body that is considered of a high credit quality, such as a bank or building society. For category 5 this covers bodies with a minimum short term rating of A (or the equivalent) as rated by Standard and Poor's, Moody's or Fitch rating agencies.

Within these bodies, and in accordance with the Code, the Council has set additional criteria to set the time and amount of monies which will be invested in these bodies. The limit with any one bank is 12 months and up to £8m, or 50% of the resources available at the time of investing, whichever is the larger.

Non Specified Investments

In response to falling bank interest rates and the challenges of the MTFS, the Head of Finance will explore alternative investment opportunities in order to save ongoing revenue costs or earn additional revenue incomes/interest. The counterparties in these cases will generally be related parties (as defined in the Accounting Code of Practice applicable to the year in which the investment decision was made), such as Rossendale Leisure Trust, Rossendale Transport Ltd and the Lancashire county Pension Fund.

In any case, a full business case for the investment, setting out the advantages, risks and rewards and assets securities, will be presented to Cabinet for consideration and subsequently to full Council for a decision.

The monitoring of investment counterparties - The credit rating of counterparties will be monitored regularly. The Council receives credit rating information (changes, rating watches and rating outlooks) from Link Asset Services as and when ratings change, and counterparties are checked promptly. On occasion ratings may be downgraded when an investment has already been made. The criteria used are such that a minor downgrading should not affect the full receipt of the principal and interest. Any counterparty failing to meet the criteria will be removed from the list immediately by the Head of Financial Services, and if required new counterparties which meet the criteria will be added to the list.

Responsible Section/Team	Financial Services	Page	34
Responsible Author	Head of Finance	Version	v1
Date last amended	Feb 2019	Due for review	Feb 2020

APPENDIX 5.5 Approved countries for investments

Based on lowest available rating

AAA

- Australia
- Canada
- Denmark
- Germany
- Luxembourg
- Netherlands
- Norway
- Singapore
- Sweden
- Switzerland

AA+

- Finland
- U.S.A.

AA

- Abu Dhabi (UAE)
- France
- Hong Kong
- U.K.

AA-

- Belgium
- Qatar

In practice officers intend to only use UK banks

Responsible Section/Team	Financial Services	Page	35
Responsible Author	Head of Finance	Version	v1
Date last amended	Feb 2019	Due for review	Feb 2020

APPENDIX 5.6 Treasury management scheme of delegation

(i) Full Council

- receiving and reviewing reports on treasury management policies, practices and activities;
- approval of annual strategy;
- approval of individual non-specified investment decisions during the financial year.

(ii) Cabinet

- approval of/amendments to the organisation's adopted clauses, treasury management policy statement and treasury management practices;
- budget consideration and approval;
- approval of the division of responsibilities;
- receiving and reviewing regular monitoring reports and acting on recommendations;
- approving the selection of external service providers and agreeing terms of appointment;
- reviewing the treasury management policy and procedures and making recommendations to the responsible body;
- consideration and recommendation of individual non-specified investment decisions during the financial year.

Responsible Section/Team	Financial Services	Page	36
Responsible Author	Head of Finance	Version	v1
Date last amended	Feb 2019	Due for review	Feb 2020

APPENDIX 5.7 The treasury management role of the Section 151 officer and other officers

The S151 (responsible) officer

- recommending clauses, treasury management policy/practices for approval, reviewing the same regularly, and monitoring compliance;
- submitting regular treasury management policy reports;
- submitting budgets and budget variations;
- receiving and reviewing management information reports;
- reviewing the performance of the treasury management function;
- ensuring the adequacy of treasury management resources and skills, and the effective division of responsibilities within the treasury management function;
- ensuring the adequacy of internal audit, and liaising with external audit;
- recommending the appointment of external service providers.

Additional roles regarding the capital strategy and commercial activities

- preparation of a capital strategy to include capital expenditure, capital financing, non-financial investments and treasury management, with a long term timeframe (say 20+ years – to be determined in accordance with local priorities.)
- ensuring that the capital strategy is prudent, sustainable, affordable and prudent in the long term and provides value for money
- ensuring that due diligence has been carried out on all treasury and non-financial investments and is in accordance with the risk appetite of the authority
- ensure that the authority has appropriate legal powers to undertake expenditure on non-financial assets and their financing
- ensuring the proportionality of all investments so that the authority does not undertake a level of investing which exposes the authority to an excessive level of risk compared to its financial resources
- ensuring that an adequate governance process is in place for the approval, monitoring and ongoing risk management of all non-financial investments and long term liabilities
- provision to members of a schedule of all non-treasury investments including material investments in subsidiaries, joint ventures, loans and financial guarantees
- ensuring that members are adequately informed and understand the risk exposures taken on by an authority
- ensuring that the authority has adequate expertise, either in house or externally provided, to carry out the above
- creation of Treasury Management Practices which specifically deal with how non treasury investments will be carried out and managed, to include the following (TM Code p54): -

Responsible Section/Team	Financial Services	Page	37
Responsible Author	Head of Finance	Version	v1
Date last amended	Feb 2019	Due for review	Feb 2020

Treasury Management Strategy Statement 2019/20

- Risk management (TMP1 and schedules), including investment and risk management criteria for any material non-treasury investment portfolios;
- Performance measurement and management (TMP2 and schedules), including methodology and criteria for assessing the performance and success of non-treasury investments;
- Decision making, governance and organisation (TMP5 and schedules), including a statement of the governance requirements for decision making in relation to non-treasury investments; and arrangements to ensure that appropriate professional due diligence is carried out to support decision making;
- Reporting and management information (TMP6 and schedules), including where and how often monitoring reports are taken;
- Training and qualifications (TMP10 and schedules), including how the relevant knowledge and skills in relation to non-treasury investments will be arranged.

The Deputy S151 officer (being the Finance Manager)

In the absence of the S151 officer, the Deputy S151 officer will take over the responsibilities noted above.

The Finance Officer (Exchequer Services)

- Transfer of Funds between the Council's approved call accounts.

Authorised Signatories

The following posts have been designated as those authorised to act as bank signatories for the Council.

- Head of Finance
- Finance Manager
- Finance Officer (Exchequer Services)
- Senior Accountant
- Accounts Technician

Responsible Section/Team	Financial Services	Page	38
Responsible Author	Head of Finance	Version	v1
Date last amended	Feb 2019	Due for review	Feb 2020

APPENDIX 5.8 Glossary

Authorised Limit for External Debt

The Authorised Limit, like all other prudential indicators, has to be set and revised by elected members. It should not be set so high that it would never in any possible circumstances be breached but rather reflect a level of borrowing which while not desired, could be afforded, but may not be sustainable

bp – basis points (in relation to, inter alia, bank base rates)

Capital Expenditure

Expenditure on the acquisition of a fixed asset or expenditure which adds to and not merely maintains the value of an existing fixed asset.

Capital Financing Requirement

This important component of an authority's capital strategy is the amount of capital spending that has not been financed by capital receipts, capital grants, and contributions from revenue. It is a measure of the underlying need to borrow for capital purposes.

CIPFA – Chartered Institute of Public Finance and Accountancy.

CPI – Consumer Price Index

Debt Rescheduling

Similar to re-mortgaging a house, in so far as, loans are repaid before maturity, and replaced with new loans, usually at a more advantageous rate of interest.

DCLG - Department of Communities and Local Government.

ECB – European Central Bank

GDP – Gross Domestic Product

IMF – International Monetary Fund

LIBOR – London Inter Bank Offer Rate

Liquidity

Access to cash deposits at very short notice.

Long term Investments

Investments with a duration of more than one year.

Market Loans

Loans borrowed from financial institutions such as banks and building societies.

Maturity

The date at which loans are due for repayment.

Net Borrowing Requirement

The Council's borrowings less cash and short term investments.

Responsible Section/Team	Financial Services	Page	39
Responsible Author	Head of Finance	Version	v1
Date last amended	Feb 2019	Due for review	Feb 2020

Treasury Management Strategy Statement 2019/20

Operational Boundary for External Debt

This indicator is, as its name suggest, the focus of day to day treasury management activity within the authority. It is a means by which the authority manages its external debt to ensure that it remains within the self imposed 'Authorised Limit'. However it differs from the 'Authorised Limit' in being based on expectations of the maximum external debt of the authority according to probable- not simply possible-events and being consistent with the maximum level of external debt projected by the estimates.

Prudential Borrowing

This is borrowing wholly supported by the Council and would include 'invest to save projects'. Market conditions permitting it may well be cheaper to borrow rather than lease vehicles and or plant.

Public Works Loan Board

A Government agency that provides longer term loans to local authorities.

Ratio of Financing costs to Net Revenue Stream

This is the proportion of interest payments plus debt repaid less interest receipts expressed as a proportion of the revenue stream. In the case of General Fund the revenue stream equates to the net budget requirement of £10.6m less £0.5m use of internal reserves (as funded by external income from Business Rates and Council Tax).

Repurchase Rate (Repo)

This is equivalent to the Bank of England base rate.

Short-term investment

Investments with a duration of less than or equal to 365 days.

Supported Borrowing

This is borrowing that is supported by the government through the revenue support grant and housing subsidy grant.

Term Deposit

Investments for a pre-defined period of time at a fixed interest rate.

Upper Limit for fixed/variable interest rate exposure

This relates to the limit in loans which can be held in either fixed interest rates or variable interest rates. Whilst fixed interest-rate borrowing can contribute significantly to reducing the uncertainty surrounding future interest rate scenarios, the pursuit of optimum performance may justify, or even demand, retaining a degree of flexibility through the use of variable interest rates.

Volatility

Sudden upward or downward movements in interest rates in reaction to economic, market and political events.

Responsible Section/Team	Financial Services	Page	40
Responsible Author	Head of Finance	Version	v1
Date last amended	Feb 2019	Due for review	Feb 2020



Treasury Management Policy and Practices

2020/21

Contents

		Page
Treasury Management Policy Statement.....	3
Treasury Management Practices.....		
TMP 1	Treasury risk management4
TMP 2	Performance measurement14
TMP 3	Decision–making and analysis16
TMP 4	Approved instruments, methods and techniques18
TMP 5	Organisation, clarity and segregation of responsibilities, and dealing arrangements20
TMP 6	Reporting requirements and management information arrangements24
TMP 7	Budgeting, accounting and audit arrangements27
TMP 8	Cash and cash flow management28
TMP 9	Money laundering29
TMP 10	Training and qualifications31
TMP 11	Use of external service providers32
TMP 12	Corporate governance34
TMP13	Investment management practices for non-treasury investments35

Responsible Section/Team	Finance	Version/Status	2020/21 v1
Responsible Author	Finance Manager	Report submitted to	Full Council
Date Amended now	Jan 2020	Meeting date	26 Feb 2020
Due for Review	Feb 2021	Page	2

The Treasury Management Policy Statement

The treasury management policy statement

This council defines its treasury management activities as:

1. The management of the organisation's borrowing, investments and cash flows, its banking, money market and capital market transactions; the effective control of the risks associated with those activities; and the pursuit of optimum performance consistent with those risks.
2. This organisation regards the successful identification, monitoring and control of risk to be the prime criteria by which the effectiveness of its treasury management activities will be measured. Accordingly, the analysis and reporting of treasury management activities will focus on their risk implications for the organisation, and any financial instruments entered into to manage these risks.
3. This council acknowledges that effective treasury management will provide support towards the achievement of its business and service objectives. It is therefore committed to the principles of achieving value for money in treasury management, and to employing suitable comprehensive performance measurement techniques, within the context of effective risk management.

Clauses to be formally adopted

1. This Council will create and maintain, as the cornerstones for effective treasury management:
 - a Treasury Management Policy Statement (TMSS), stating the policies, objectives and approach to risk management of its treasury management activities
 - suitable Treasury Management Practices (TMPs), setting out the manner in which the organisation will seek to achieve those policies and objectives, and prescribing how it will manage and control those activities.

The content of the policy statement and TMPs will follow the recommendations contained in Sections 6 and 7 of the CIPFA Treasury Management Code (the Code), subject only to amendment where necessary to reflect the particular circumstances of this organisation. Such amendments will not result in the organisation materially deviating from the Code's key principles.

2. This Council will receive reports on its treasury management policies, practices and activities, including, as a minimum, an annual strategy and plan in advance of the year, a mid-year review and an annual report after its close, in the form prescribed in its TMPs.
3. This Council delegates responsibility for the implementation and regular monitoring of its treasury management policies and practices to Head of Finance, and for the execution and administration of treasury management decisions to the Head of Finance, who will act in accordance with the organisation's policy statement and TMPs
4. This organisation nominates Head of Finance to be responsible for ensuring effective scrutiny of the treasury management strategy and policies.

Responsible Section/Team	Finance	Version/Status	2017/18 v1
Responsible Author	Finance Manager	Report submitted to	Full Council
Date last Amended	Feb 2017	Meeting date	1 March 2017
Due for Review	Feb 2018	Page	3

TMP 1 RISK MANAGEMENT

The responsible officer (in the case of Rossendale Borough Council, The Head of Finance) will design, implement and monitor all arrangements for the identification, management and control of treasury management risk, will report at least annually on the adequacy/suitability thereof, and will report, as a matter of urgency, the circumstances of any actual or likely difficulty in achieving the organisation's objectives in this respect, all in accordance with the procedures set out in TMP6 Reporting requirements and management information arrangements. In respect of each of the following risks, the arrangements which seek to ensure compliance with these objectives are set out in the schedule to this document.

1. Credit and Counterparty Risk Management

Credit and counter-party risk is the risk of failure by a counterparty to meet its contractual obligations to the organisation under an investment, borrowing, capital project or partnership financing, particularly as a result of the counterparty's diminished creditworthiness, and the resulting detrimental effect on the organisation's capital or current (revenue) resources.

This organisation regards a key objective of its treasury management activities to be the security of the principal sums it invests. Accordingly, it will ensure that its counterparty lists and limits reflect a prudent attitude towards organisations with whom funds may be deposited, and will limit its investment activities to the instruments, methods and techniques referred to in TMP4 Approved Instruments Methods And Techniques and listed in the schedule to this document. It also recognises the need to have, and will therefore maintain, a formal counterparty policy in respect of those organisations from which it may borrow, or with whom it may enter into other financing arrangements.

1.1. Policy on the use of credit risk analysis techniques

- 1.1.1. The Council will use credit criteria in order to select creditworthy counterparties for placing investments with.
- 1.1.2. Credit ratings will be used as supplied from all three rating agencies - Fitch, Moodys and Standard & Poors
- 1.1.3. Treasury Management Consultants will provide regular updates of changes to all ratings relevant to the council.
- 1.1.4. The responsible officer will formulate suitable criteria for assessing and monitoring the credit risk of investment counterparties and shall construct a lending list comprising maturity periods, type, group, sector, country and counterparty limits. This organisation will use the Sector creditworthiness service based on using colours determined by minimum combinations of ratings to derive maturity limits as follows: -
 - Yellow 5 years
 - Purple 2 years
 - Blue 1 year (only applies to nationalised or semi nationalised UK Banks)
 - Orange 1 year
 - Red 6 months
 - Green 3 months
 - No Colour not to be used

Responsible Section/Team	Finance	Version/Status	2020/21 v1
Responsible Author	Finance Manager	Report submitted to	Full Council
Date Amended now	Jan 2020	Meeting date	26 Feb 2020
Due for Review	Feb 2021	Page	4

In addition, a credit default swap overlay is used as a further safeguard to give early warning of potential creditworthiness problems which may only belatedly lead to actual changes in credit ratings.

As this methodology is complex, readers are referred to the document produced by Link Asset Services “Treasury Solutions Credit Policy Guide December 2015” for a full explanation.

- 1.1.5. Credit ratings for individual counterparties can change at any time. The Head of Finance is responsible for applying approved credit rating criteria for selecting approved counterparties. Treasury management staff will add or delete counterparties to/from the approved counterparty list in line with the policy on criteria for selection of counterparties.
- 1.1.6. This organisation will not rely solely on credit ratings in order to select and monitor the creditworthiness of counterparties. In addition to credit ratings it will therefore use other sources of information including: -
- The quality financial press
 - Market data
 - Information on government support for banks and
 - The credit ratings of that government support
- 1.1.7. Maximum maturity periods and amounts to be placed in different types of investment instrument are shown below. At present the maximum investment period for Specified Investments is 365 days.
- 1.1.8. Diversification: this organisation will avoid concentrations of lending and borrowing by adopting a policy of diversification. It will therefore use the following: -
- Maximum amount to be placed with any one institution - £8m or 50%, whichever is greater at the time the decision is made.
 - Group limits where a number of institutions are under one ownership – maximum of £10m
 - Country limits – normally, a minimum sovereign rating of AAA is required for an institution to be placed on our approved lending list. However, UK banks will be considered regardless of the UK’s sovereign rating at the time of investment.
- 1.1.9. Investments will not be made with counterparties that do not have a credit rating in their own right, other than in the case of Non-specified Investments where the counterparty is one of the Council’s related parties and where a charge can be placed on land or equity in order to preserve the Council’s rights to its resources.
- 1.1.10. The definition of ‘high credit quality’ in order to determine what are specified investments as opposed to non specified investments which do not have high credit ratings is set out at the end of TMP1 in schedule 1.
- 1.1.11. Should the Council ever begin to use **external fund manager(s)** they will adhere to the counterparty credit criteria and maximum individual limits set by the Council; however, it is understood that fund manager(s) may use a subset of the counterparty list so derived.

Responsible Section/Team	Finance	Version/Status	2020/21 v1
Responsible Author	Finance Manager	Report submitted to	Full Council
Date Amended now	Jan 2020	Meeting date	26 Feb 2020
Due for Review	Feb 2021	Page	5

1.2 Liquidity Risk Management

This is the risk that cash will not be available when it is needed, that ineffective management of liquidity creates additional unbudgeted costs, and that the organisation's business/service objectives will be thereby compromised.

This organisation will ensure it has adequate though not excessive cash resources, borrowing arrangements, overdraft or standby facilities to enable it at all times to have the level of funds available to it which are necessary for the achievement of its business/service objectives. This organisation will only borrow in advance of need where there is a clear business case for doing so and will only do so for the current capital programme or to finance future debt maturities.

1.2.1. Amounts of approved minimum cash balances and short-term investments

The Finance Officers shall seek to minimise the balance held in the Council's main bank accounts at the close of each working day. The use of alternative call accounts and short-term notice accounts (under 90 days) shall be used in order to achieve this aim.

1.2.2. Details of:

a. Standby facilities

At the end of each financial day the balance in the Council's current account is automatically transferred to/from the Special Business Investment Account (SIBA) to maximise the interest available on the Council's operational bank accounts. In practice the current account and the SIBA account are now operated as one account. Individual daily debit balances on the current account are not treated as an overdraft.

The Council also maintain one or more on-call, and notice accounts up to 90 days with other banks. These accounts are used for reserve cash balances which may be required without notice. Such instant access is possible, but would lead to some loss of interest commensurate with the notice period waived.

b. Bank overdraft arrangements

Previous overdraft facilities have now ceased due to the sweeping action described above and following the bank imposing an arrangement fee for overdrafts on the SIBA account.

c. Short-term borrowing facilities

The Council accesses temporary loans through approved brokers on the London money market. The approved operational borrowing limit for short term debt in 2018/19 is £9.5m.

d. Insurance/quarantee facilities

There are no specific insurance or guarantee facilities as the above arrangements are regarded as being adequate to cover all unforeseen occurrences.

Responsible Section/Team	Finance	Version/Status	2020/21 v1
Responsible Author	Finance Manager	Report submitted to	Full Council
Date Amended now	Jan 2020	Meeting date	26 Feb 2020
Due for Review	Feb 2021	Page	6

1.3 Interest Rate Risk Management

The risk that fluctuations in the levels of interest rates create an unexpected or unbudgeted burden on the organisation's finances, against which the organisation has failed to protect itself adequately.

This organisation will manage its exposure to fluctuations in interest rates with a view to containing its interest costs, or securing its interest revenues, in accordance with the amounts provided in its budgetary arrangements as amended in accordance with TMP6 Reporting requirements and management information arrangements.

It will achieve this by the prudent use of its approved financing and investment instruments, methods and techniques, primarily to create stability and certainty of costs and revenues, but at the same time retaining a sufficient degree of flexibility to take advantage of unexpected, potentially advantageous changes in the level or structure of interest rates. This should be the subject to the consideration and, if required, approval of any policy or budgetary implications.

1.3.1 Policies concerning the use of instruments for interest rate management.

- a. forward dealing
Consideration will be given to dealing from forward periods dependant upon market conditions.
- b. callable deposits (England and Wales only)
The Council may use callable deposits as part as of its Annual Investment Strategy (AIS), which now forms part of the Annual Treasury Management Strategy Statement. The credit criteria and maximum periods are set out in the Schedule of Specified and Non Specified Investments appended to the AIS.
- c. LOBOS (borrowing under lender's option/borrower's option)
Use of LOBOs are considered as part of the annual borrowing strategy. All borrowing for periods in excess of 365 days must be approved by Head of Finance.

1.4 Exchange Rate Risk Management

The risk that fluctuations in foreign exchange rates create an unexpected or unbudgeted burden on the organisation's finances, against which the organisation has failed to protect itself adequately.

The Council will manage its exposure to fluctuations in exchange rates so as to minimise any detrimental impact on its budgeted income/expenditure levels.

1.5 Refinancing Risk Management

The risk that maturing borrowings, capital projects or partnership financings cannot be refinanced on terms that reflect the provisions made by the organisation for those refinancing, both capital and current (revenue), and/or that the terms are inconsistent with prevailing market conditions at the time.

This organisation will ensure that its borrowing, private financing and partnership arrangements are negotiated, structured and documented, and the maturity profile of the monies so raised are managed, with a view to obtaining offer terms for renewal or

Responsible Section/Team	Finance	Version/Status	2020/21 v1
Responsible Author	Finance Manager	Report submitted to	Full Council
Date Amended now	Jan 2020	Meeting date	26 Feb 2020
Due for Review	Feb 2021	Page	7

refinancing, if required, which are competitive and as favourable to the organisation as can reasonably be achieved in the light of market conditions prevailing at the time.

The Council will actively manage its relationships with its counterparties in these transactions in such a manner as to secure this objective, and will avoid overreliance on any one source of funding if this might jeopardise achievement of the above.

1.5.1. Debt/Other Capital Financing, Maturity Profiling, Policies and Practices

The Council will establish through its Prudential and Treasury Indicators the amount of debt maturing in any year/period.

Any debt rescheduling will be considered when the difference between the refinancing rate and the redemption rate is most advantageous and the situation will be continually monitored in order to take advantage of any perceived anomalies in the yield curve. The reasons for any rescheduling to take place will include:

- a) the generation of cash savings at minimum risk;
- b) to reduce the average interest rate;
- c) to amend the maturity profile and /or the balance of volatility of the debt portfolio.

Rescheduling will be reported to the Cabinet at the meeting immediately following its action.

1.5.2. Projected Capital Investment Requirements

The Finance Manager will prepare a three year plan for capital expenditure for the Council. The capital plan will be used to prepare a three year revenue budget for all forms of financing charges. In addition, the responsible officer will draw up a capital strategy report which will give a longer term view.

The definition of capital expenditure and long term liabilities used in the Code will follow recommended accounting practice as per the Code of Practice on Local Authority Accounting.

1.5.3 Policy Concerning Limits on Affordability and Revenue Consequences of Capital Financing

In considering the affordability of its capital plans, the Council will consider all the resources currently available/estimated for the future together with the totality of its capital plans, revenue income and revenue expenditure forecasts for the forthcoming year and the two following years and the impact these will have on council tax. It will also take into account affordability in the longer term beyond this three year period.

The Council will use the definitions provided in the Prudential Code for borrowing (65), capital expenditure (66), capital financing requirement (67), debt (68), financing costs (69), investments (70), net borrowing (71), net revenue stream (72), other long term liabilities (73).

1.6 Legal and Regulatory Risk Management

The risk that the organisation itself, or an organisation with which it is dealing in its treasury management activities, fails to act in accordance with its legal powers or regulatory requirements, and that the organisation suffers losses accordingly.

Responsible Section/Team	Finance	Version/Status	2020/21 v1
Responsible Author	Finance Manager	Report submitted to	Full Council
Date Amended now	Jan 2020	Meeting date	26 Feb 2020
Due for Review	Feb 2021	Page	8

This organisation will ensure that all of its treasury management activities comply with its statutory powers and regulatory requirements. It will demonstrate such compliance, if required to do so, to all parties with whom it deals in such activities. In framing its credit and counterparty policy under TMP1[1] credit and counterparty risk management, it will ensure that there is evidence of counterparties' powers, authority and compliance in respect of the transactions they may affect with the organisation, particularly with regard to duty of care and fees charged.

This organisation recognises that future legislative or regulatory changes may impact on its treasury management activities and, so far as it is reasonably able to do so, will seek to minimise the risk of these impacting adversely on the organisation.

1.6.1. References to Relevant Statutes and Regulations

The treasury management activities of the Council shall comply fully with legal statute, guidance, Codes of Practice and the regulations of the Council. These are:

- Local Government Finance Act 1988 section 114 – duty on the responsible officer to issue a report if the Council is likely to get into a financially unviable position.
- Requirement to set a balanced budget - Local Government Finance Act 1992 section 32 for billing authorities and section 43 for major precepting authorities.
- Local Government Act 2003
- S.I. 2003 No.2938 Local Government Act 2003 (Commencement No.1 and Transitional Provisions and Savings) Order 2003 13.11.03
- S.I. 2003 No.3146 Local Authorities (Capital Finance and Accounting) (England) Regulations 2003 and associated commentary 10.12.03
- S.I. 2004 No.533 Local Authorities (Capital Finance) (Consequential, Transitional and Savings Provisions) Order 2004 8.3.04
- S.I. 2004 No.534 Local Authorities (Capital Finance and Accounting) (Amendment) (England) Regulations 2004 8.3.04
- S.I. 2004 no. 3055 The Local Authorities (Capital Finance and Accounting) (Amendment) (England) (No. 2) Regulations 2004
- S.I. 2006 no. 521 Local Authorities (Capital Finance and Accounting) (Amendment) (England) Regulations 2006
- S.I. 2007 no. 573 Local Authorities (Capital Finance and Accounting) (Amendment) (England) Regulations 2007
- Local Government and Public Involvement in Health Act 2007 s238(2) – power to issue guidance; to be used re: MRP
- S.I. 2008 no. 414 Local Authorities (Capital Finance and Accounting) (Amendment) (England) Regulations 2008
- S.I. 2009 no. 321 Local Authorities (Capital Finance and Accounting) (Amendment) (England) Regulations 2009
- S.I. 2009 no. 2272 The Local Authorities (Capital Finance And Accounting) (England) (Amendment) (No.2) Regulations 2009
- S.I. 2009 no. 3093 The Local Government Pension Fund Scheme (Management and Investment of Funds) Regulations 2009
- S.I. 2010 no. 454 (Capital Finance and Accounting) (Amendment) (England) Regulations 2010
- Localism Act 2011
- S.I. 2012 no. 265 Local Authorities (Capital Finance and Accounting) (England) (Amendment) Regulations 2012
- S.I. 2012 No. 711 The Local Authorities (Capital Finance and Accounting) (England) (Amendment) (No. 2) Regulations 2012

Responsible Section/Team	Finance	Version/Status	2020/21 v1
Responsible Author	Finance Manager	Report submitted to	Full Council
Date Amended now	Jan 2020	Meeting date	26 Feb 2020
Due for Review	Feb 2021	Page	9

- S.I. 2012 No. 1324 The Local Authorities (Capital Finance and Accounting) (England) (Amendment) (No.3) Regulations 2012
- S.I. 2012 No. 2269 The Local Authorities (Capital Finance and Accounting) (England) (Amendment) (No. 4) Regulations 2012
- S.I. 2013 no. 476 The Local Authorities (Capital Finance and Accounting) (England) (Amendment) Regulations 2013
- S.I. 2015 no. 234 Accounts and Audit Regulations 2015

Guidance and codes of practice

- CLG Revised Guidance on Investments 1.4.2010
- CLG guidance on minimum revenue provision – Feb 2012
- CIPFA's Treasury Management Codes of Practice and Guidance Notes 2011,
- CIPFA Prudential Code for Capital Finance in Local Authorities revised 2011
- CIPFA Prudential Code for Capital Finance in Local Authorities – guidance notes for practitioners 2013
- CIPFA Local Authority Capital Accounting - a reference manual for practitioners 2014 Edition
- CIPFA Guide for Chief Financial Officers on Treasury Management in Local Authorities 1996
- CIPFA Standard of Professional Practice on Treasury Management 2002
- CIPFA Standard of Professional Practice on Continuous professional Development 2005
- CIPFA Standard of Professional Practice on Ethics 2006
- The Good Governance Standard for Public Services 2004
- LAAP Bulletins
- IFRS - Code of Practice on Local Authority Accounting in the United Kingdom: A Statement of recommended Practice
- PWLB circulars on Lending Policy
- The Non-Investment Products Code (NIPS) - (formerly known as The London Code of Conduct) for principals and broking firms in the wholesale markets.
- Financial Conduct Authority's Code of Market Conduct
- The Council's Standing Orders relating to Contracts
- The Council's Financial Regulations
- The Council's Scheme of Delegated Functions

1.6.2 Procedures for Evidencing the Council's Powers/Authorities to Counterparties

The Council's powers to borrow and invest are contained in legislation.

Investing: Local Government Act 2003, section 12

Borrowing: Local Government Act 2003, section 1

In addition, it will make available on request the following the scheme of delegation of treasury management activities contained in Treasury Management Strategy which states

- which officers carry out these duties
- which officers are the authorised signatories

Required Information on Counterparties

Lending shall only be made to counterparties on the Approved Lending list. This list has been compiled using advice from the Council's treasury advisers based upon credit ratings supplied by Fitch, Moodys and Standard & Poors. Lending can also be made to one of the Council's related parties or subsidiaries.

Responsible Section/Team	Finance	Version/Status	2020/21 v1
Responsible Author	Finance Manager	Report submitted to	Full Council
Date Amended now	Jan 2020	Meeting date	26 Feb 2020
Due for Review	Feb 2021	Page	10

1.6.3 Statement on the Council’s Political Risks and Management of Same

The Head of Finance shall take appropriate action with the Council, the Chief Executive Officer and the Leader of the Council to respond to and manage appropriately political risks such as change of majority group, leadership in the Council, change of Government etc.

1.6.4 Monitoring Officer

It is the duty of the monitoring officer to ensure that the treasury management activities of the Council are lawful.

1.6.5. Chief Financial Officer

The Chief Financial Officer is the Head of Finance. The duty of this officer is to ensure that the financial affairs of the Council are conducted in a prudent manner and to make a report to the Council if he has concerns as to the financial prudence of its actions or its expected financial position.

1.7 Fraud, Error and Corruption, and Contingency Management

The risk that the Council fails to identify the circumstances in which it may be exposed to the risk of loss through fraud, error, corruption or other eventualities in its treasury management dealings, and fails to employ suitable systems and procedures and maintain effective contingency management arrangements to these ends. It includes the area of risk commonly referred to as operational risk.

This Council will ensure that it has identified the circumstances which may expose it to the risk of loss through fraud, error, corruption or other eventualities in its treasury management dealings. Accordingly, it will employ suitable systems and procedures, and will maintain effective contingency management arrangements, to these ends.

The Council will therefore:-

- a) Seek to ensure an adequate division of responsibilities and maintenance at all times of an adequate level of internal check which minimises such risks.
- b) Fully document all its treasury management activities so that there can be no possible confusion as to what proper procedures are.
- c) Staff will not be allowed to take up treasury management activities until they have had proper training in procedures and are then subject to an adequate and appropriate level of supervision.
- d) Records will be maintained of all treasury management transactions so that there is a full audit trail and evidence of the appropriate checks being carried out.

1.7.1. Details of Systems and Procedures to be Followed, Including Internet Services

Authority

- The Scheme of Delegation to Officers sets out the delegation of duties to officers.
- All loans and investments are negotiated by the responsible officer or authorised persons.
- Loan procedures are defined in the Financial Regulations section of the Council’s Constitution.

Responsible Section/Team	Finance	Version/Status	2020/21 v1
Responsible Author	Finance Manager	Report submitted to	Full Council
Date Amended now	Jan 2020	Meeting date	26 Feb 2020
Due for Review	Feb 2021	Page	11

Procedures

- The electronic banking procedures include internet access to the Council's bank accounts for both downloading statements and entering one-off same-day transactions. The electronic authorisation of transactions through chip and pin cards and passwords follows the same pattern of required signatories as paper transactions do (i.e. one signature up to £5,000 and two signatures for transactions over £5,000).
- PayAway IP is the system used by the Council for the transfer of payment and collection files to the BACs processing centre. BACs collection and payment files are generated by the payroll, creditors, benefits and revenues software systems and transferred through a secure internet portal by the authorised signatories. Files must be generated, approved and sent by two different people.
- Full details of operational procedures are maintained by the Finance Officer (Exchequer Services).

Investment and borrowing transactions

- A detailed register of all loans and investments is maintained by the Finance Officer (Exchequer Services). A written acknowledgement of each deal is sent promptly to the lending or borrowing institution where transactions are done directly with the organisation.
- Written confirmation is received and checked against the dealer's records for the transaction.
- Any discrepancies are immediately reported to the Head of Finance for resolution.
- All transactions placed through brokers are confirmed by a broker note showing details of the loan arranged. Written confirmation is received and checked against the dealer's records for the transaction. Any discrepancies are immediately reported to the Head of Finance for resolution.

Regularity and security

- Lending is only made to institutions on the Approved List of Counterparties.
- All loans raised, and repayments made, go directly to and from the bank account of approved counterparties.
- Counterparty limits are set for every institution that the Council invests with.
- Brokers have a list of named officials authorised to agree deals.
- There is a separation of duties in the section between dealers and the checking and authorisation of all deals.
- The Council's bank holds a list of Council officials who are authorised signatories for treasury management transactions.
- Payments can only be authorised in a formal letter by an authorised signatory, the list of signatories having previously been agreed with the current provider of our banking services.
- The NatWest Bankline system can only be accessed by a password and online payments require chip and pin authorisation from one or more of the bank signatories (two for payments over £5,000).
- There is adequate insurance cover for employees involved in loans management and accounting.

Checks

- The bank reconciliation is carried out monthly from the bank statement to the financial ledger.
- A debt charge/investment income listing is produced every month when a review is undertaken against the budget for interest earnings and debt costs.

Responsible Section/Team	Finance	Version/Status	2020/21 v1
Responsible Author	Finance Manager	Report submitted to	Full Council
Date Amended now	Jan 2020	Meeting date	26 Feb 2020
Due for Review	Feb 2021	Page	12

Calculations

- The calculation of repayment of principal and interest notified by the lender or borrower is checked for accuracy against the amount calculated by the Finance Officer (Exchequer Services). This is used to check the amount paid to lenders.
- Average weighted capital loans fund interest rates and debt management expenses are calculated monthly using information from the financial ledger.
- These interest and expense rates are then used to calculate the principal, interest and debt management expense charges to the General Fund.

1.7.2. Emergency and Contingency Planning Arrangements Disaster Recovery Plan.

The Council's main Business Continuity Plan includes a detailed section covering the essential financial systems and procedures, including banking, payments and revenue collection. All members of the treasury management team are familiar with this plan and new members will be briefed on it. The plan is reviewed and updated at regular intervals with both paper and electronic copies being available.

All computer files are backed up on the server to enable files to be accessed from remote sites.

1.7.3. Insurance Cover Details

Fidelity Insurance

The Council has 'Fidelity' insurance cover with Zurich Municipal which covers the loss of cash by fraud or dishonesty of employees. This cover is limited to £5.5m for any one event with an excess of £1k for any one event.

Professional Indemnity Insurance

The Council also has an 'Officials Indemnity' insurance policy with Zurich Municipal which covers loss to the Council from the actions and advice of its officers which are negligent and without due care. This cover is limited to £5m for any one event with an excess of £nil for any one event.

1.8 Market Risk Management

The risk that, through adverse market fluctuations in the value of the principal sums an organisation borrows and invests, its stated treasury management policies and objectives are compromised, against which effects it has failed to protect itself adequately.

This organisation will seek to ensure that its stated treasury management policies and objectives will not be compromised by adverse market fluctuations in the value of the principal sums it invests, and will accordingly seek to protect itself from the effects of such fluctuations.

1.8.1. Details of Approved Procedures and Limits for Controlling Exposure to Investments Whose Capital Value May Fluctuate (Gilts, CDs, Etc.)

These are controlled through setting limits on investment instruments where the principal value can fluctuate. The limits are determined and set through the Annual Investment Strategy (which now forms part of the Annual Treasury Management Strategy Statement).

Responsible Section/Team	Finance	Version/Status	2020/21 v1
Responsible Author	Finance Manager	Report submitted to	Full Council
Date Amended now	Jan 2020	Meeting date	26 Feb 2020
Due for Review	Feb 2021	Page	13

TMP 2 PERFORMANCE MEASUREMENT

2.1 Evaluation and Review of Treasury Management Decisions

The Council has a number of approaches to evaluating treasury management decisions:

- a. monthly reviews carried out by the Head of Finance and Finance Manager, reported as part of the regular financial monitoring reports to Cabinet.
- b. weekly review reports from our treasury management consultants detailing current markets, forecasts and model portfolio returns.
- c. annual review of performance and strategy with our treasury management consultants.
- d. comparative reviews with neighbouring authorities.

2.1.2 Reviews with our treasury management consultants

The Head of Finance meets with our consultants every 12 months to review the performance of the investment and debt portfolios.

2.1.3 Annual Review after the end of the financial year

In addition to the regular financial monitoring reports to Cabinet, the end of March out-turn report includes an annual treasury management report which reviews the performance of the debt and investment portfolios. This report contains the following:

- a. total debt and investments at the beginning and close of the financial year and average interest rates
- b. borrowing strategy for the year compared to actual strategy
- c. investment strategy for the year compared to actual strategy
- d. explanations for variance between original strategies and actual
- e. debt rescheduling done in the year
- f. actual borrowing and investment rates available through the year
- g. comparison of return on investments to the investment benchmark
- h. compliance with Prudential and Treasury Indicators

2.1.4 Comparative reviews

When data becomes available, comparative reviews are undertaken to see how the performance of the authority on debt and investments compares to other authorities with similar size portfolios (but allowing for the fact that Prudential and Treasury Indicators are locally set). Data can be sourced from: -

- CIPFA Treasury Management statistics published each year for the last complete financial year
- Neighbouring Lancashire authorities
- Link Asset Services model portfolio

Responsible Section/Team	Finance	Version/Status	2020/21 v1
Responsible Author	Finance Manager	Report submitted to	Full Council
Date Amended now	Jan 2020	Meeting date	26 Feb 2020
Due for Review	Feb 2021	Page	14

2.2 Benchmarks and Calculation Methodology:

2.2.1 Debt management

- Average rate on all external debt
- Average period to maturity of external debt
- Average period to maturity of new loans in previous year

2.2.2 Investment

The performance of investment earnings will be measured against the following benchmarks: -

- a. Link Asset Services model portfolio
 - *Weighted average rate of return*
 - *Weighted average maturity*

Performance may also be measured against other local authority funds with similar benchmarks and parameters managed by other fund managers.

2.3 Policy concerning methods for testing Value for Money in Treasury Management

2.3.1 Frequency and processes for tendering

Tenders are normally awarded on a five-year basis. The process for awarding contracts will be in line with the Council's Contract Standing Orders.

2.3.2 Banking services

The Council's banking arrangements are to be subject to competitive tender unless it is considered that there will be changes in the volume of transactions in the foreseeable future which renders a shorter period appropriate.

2.3.3 Money-broking services

The Council may use money broking services in order to make deposits or to borrow, and will establish charges for all services prior to using them.

2.3.4 Consultants'/advisers' services

This Council's policy is not to appoint full-time professional treasury management consultants (Link Asset Services advise on an ad hoc basis, alongside automated updates).

2.3.5 Policy on External Managers (Other than relating to Superannuation Funds)

The Council's policy is not to appoint external investment fund managers.

Responsible Section/Team	Finance	Version/Status	2020/21 v1
Responsible Author	Finance Manager	Report submitted to	Full Council
Date Amended now	Jan 2020	Meeting date	26 Feb 2020
Due for Review	Feb 2021	Page	15

TMP 3 DECISION-MAKING AND ANALYSIS

3.1 Funding, Borrowing, Lending, and New Instruments/Techniques:

3.1.1 Records to be kept

The following records will be retained:-

- Daily and monthly cash balance forecasts
- Brokers' confirmations for investment and temporary borrowing transactions
- Confirmations from borrowing /lending institutions where deals are done directly
- PWLB loan confirmations
- PWLB debt portfolio schedules.
- Certificates for market loans, local bonds and other loans
- Contract notes received from fund manager(s)
- Fund manager(s) valuation statements (if applicable)

3.1.2 Processes to be pursued

- Cash flow analysis.
- Debt and investment maturity analysis
- Ledger reconciliation
- Review of opportunities for debt restructuring (if applicable)
- Review of borrowing requirement to finance capital expenditure (and other forms of financing where those offer value for money)
- Performance information (e.g. monitoring of actual against budget for debt charges, interest earned, debt management; also monitoring of average pool rate, investment returns, etc).

3.1.3 Issues to be addressed

3.1.3.1. In respect of every treasury management decision made the Council will:

- a) Above all, be clear about the nature and extent of the risks to which the Council may become exposed
- b) Be certain about the legality of the decision reached and the nature of the transaction, and that all authorities to proceed have been obtained
- c) Be content that the documentation is adequate both to deliver the Council's objectives and protect the Council's interests, and to deliver good housekeeping
- d) Ensure that third parties are judged satisfactory in the context of the Council's creditworthiness policies, and that limits have not been exceeded
- e) Be content that the terms of any transactions have been fully checked against the market, and have been found to be competitive.

Responsible Section/Team	Finance	Version/Status	2020/21 v1
Responsible Author	Finance Manager	Report submitted to	Full Council
Date Amended now	Jan 2020	Meeting date	26 Feb 2020
Due for Review	Feb 2021	Page	16

3.1.3.2 In respect of borrowing and other funding decisions, the Council will:

- a) consider the ongoing revenue liabilities created, and the implications for the organisation's future plans and budgets
- b) evaluate the economic and market factors that might influence the manner and timing of any decision to fund
- c) consider the merits and demerits of alternative forms of funding, including funding from revenue, leasing and private partnerships
- d) consider the alternative interest rate bases available, the most appropriate periods to fund and repayment profiles to use and, if relevant, the opportunities for foreign currency funding.

3.1.3.3 In respect of investment decisions, the Council will:

- a) consider the optimum period, in the light of cash flow availability and prevailing market conditions;
- b) consider the alternative investment products and techniques available, especially the implications of using any which may expose the Council to changes in the value of its capital;
- c) in the case of investments outside the banking sector the Council will consider the appropriate level of asset security, such as Land Registry charges, local Land Charges, or holding asset deeds.

Responsible Section/Team	Finance	Version/Status	2020/21 v1
Responsible Author	Finance Manager	Report submitted to	Full Council
Date Amended now	Jan 2020	Meeting date	26 Feb 2020
Due for Review	Feb 2021	Page	17

TMP 4 APPROVED INSTRUMENTS, METHODS AND TECHNIQUES

4.1 Approved Activities of the Treasury Management Operation

- borrowing;
- lending;
- debt repayment and rescheduling;
- consideration, approval and use of new financial instruments and treasury management techniques;
- managing the underlying risk associated with the Council's capital financing and surplus funds activities;
- managing cash flow;
- banking activities;
- the use of external fund managers (other than Pension Fund)
- leasing.

4.2 Approved Instruments for Investments

Refer to the Treasury Management Strategy.

4.3 Approved Techniques

- Forward dealing
- LOBOs – lenders option, borrower's option borrowing instrument
- The use of structured products such as callable deposits

4.4 Approved Methods and Sources of Raising Capital Finance

Finance will only be raised in accordance with the Local Government Act 2003 and within this limit the Council has a number of approved methods and sources of raising capital finance. These are:

On Balance Sheet	Fixed	Variable
PWLB	●	●
Market (long-term)	●	●
Market (temporary)	●	●
Market (LOBOs)	●	●
Local temporary	●	●
Local Bonds	●	
Overdraft		●
Internal (capital receipts & revenue balances)	●	●
Leasing (not operating leases)	●	●
Deferred Purchase	●	●

Other Methods of Financing

- Government and EC Capital Grants
- Lottery monies
- PFI/PPP
- Operating leases

Responsible Section/Team	Finance	Version/Status	2020/21 v1
Responsible Author	Finance Manager	Report submitted to	Full Council
Date Amended now	Jan 2020	Meeting date	26 Feb 2020
Due for Review	Feb 2021	Page	18

Borrowing will only be done in Sterling. All forms of funding will be considered dependent on the prevailing economic climate, regulations and local considerations. The responsible officer has delegated powers in accordance with Financial Regulations, Standing Orders, the Scheme of Delegation to Officers Policy and the Treasury Management Strategy to take the most appropriate form of borrowing from the approved sources.

4.5 Investment Limits

The Treasury Management Strategy Statement sets out the limits and the guidelines for use of each type of investment instrument.

4.6 Borrowing Limits

See the Treasury Management Strategy Statement and Prudential and Treasury Indicators.

Responsible Section/Team	Finance	Version/Status	2020/21 v1
Responsible Author	Finance Manager	Report submitted to	Full Council
Date Amended now	Jan 2020	Meeting date	26 Feb 2020
Due for Review	Feb 2021	Page	19

TMP 5 Organisation, Clarity and Segregation of Responsibilities, and Dealing Arrangements

5.1 Allocation of responsibilities

(i) Full Council

- receiving and reviewing reports on treasury management policies, practices and activities
- approval of annual treasury management strategy
- approval of capital strategy and capital programme
- approval of annual revenue budget

(ii) Cabinet

- recommendation of amendments to the organisation’s adopted clauses, treasury management policy statement and treasury management practices
- budget consideration and recommendations
- approval of the division of responsibilities
- receiving and reviewing regular monitoring reports and acting on recommendations
- approving the selection of external service providers and agreeing terms of appointment.
- reviewing the treasury management policy and procedures and making recommendations to the responsible body.

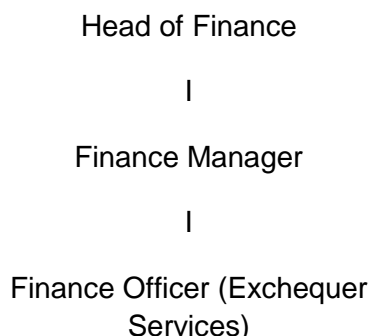
5.2 Principles and Practices Concerning Segregation of Duties

5.2.1 The following duties must be undertaken by separate officers: -

Dealing	Negotiation and approval of deal. Receipt and checking of brokers confirmation note against loans diary. Reconciliation of cash control account. Bank reconciliation
Accounting Entry	Production of transfer note. Processing of accounting entry
Authorisation/Payment of Deal	Entry onto system. Approval and payment.

Responsible Section/Team	Finance	Version/Status	2020/21 v1
Responsible Author	Finance Manager	Report submitted to	Full Council
Date Amended now	Jan 2020	Meeting date	26 Feb 2020
Due for Review	Feb 2021	Page	20

5.3 Treasury Management Organisation Chart



5.4 Statement of the treasury management duties/responsibilities of each treasury post

5.4.1. The responsible officer

The responsible officer is the person charged with professional responsibility for the treasury management function and in this Council is the Head of Finance (This post is also the S151 officer.) This officer will carry out the following duties: -

- a) recommending clauses, treasury management policy/practices for approval, reviewing the same regularly, and monitoring compliance
- b) submitting regular treasury management policy reports
- c) submitting budgets and budget variations
- d) receiving and reviewing management information reports
- e) reviewing the performance of the treasury management function
- f) ensuring the adequacy of treasury management resources and skills, and the effective division of responsibilities within the treasury management function
- g) ensuring the adequacy of internal audit, and liaising with external audit
- h) recommending the appointment of external service providers.
- i) The responsible officer has delegated powers through this policy to take the most appropriate form of borrowing from the approved sources, and to make the most appropriate form of investments in approved instruments.
- j) The responsible officer may delegate his power to borrow and invest to members of his staff, principally the Finance Manager, to act as temporary cover for leave/sickness. All transactions must be authorised by at least two of the bank signatories as approved in the Treasury Management Strategy Appendix 6.
- k) The responsible officer will ensure that Treasury Management Policy is adhered to, and if not will bring the matter to the attention of elected members as soon as possible.
- l) Prior to entering into any capital financing, lending or investment transaction, it is the responsibility of the responsible officer to be satisfied, by reference to the Council's legal department and external advisors as appropriate, that the proposed transaction does not breach any statute, external regulation or the Council's Financial Regulations
- m) It is also the responsibility of the responsible officer to ensure that the Council complies with the requirements of The Non Investment Products Code

Responsible Section/Team	Finance	Version/Status	2020/21 v1
Responsible Author	Finance Manager	Report submitted to	Full Council
Date Amended now	Jan 2020	Meeting date	26 Feb 2020
Due for Review	Feb 2021	Page	21

(formerly known as The London Code of Conduct) for principals and broking firms in the wholesale markets.

5.4.2. Finance Officer (Exchequer Services)

The responsibilities of this post will be: -

- a) execution of transactions
- b) adherence to agreed policies and practices on a day-to-day basis
- c) maintaining relationships with counterparties and external service providers
- d) supervising treasury management staff
- e) monitoring performance on a day-to-day basis
- f) submitting management information reports to the responsible officer
- g) identifying and recommending opportunities for improved practices

5.4.3. The Head of the Paid Service – the Chief Executive

The responsibilities of this post will be: -

- a) Ensuring that the system is specified and implemented
- b) Ensuring that the responsible officer reports regularly to full Council and Cabinet on treasury policy, activity and performance.

5.4.4. The Monitoring Officer

The responsibilities of this post will be: -

- a) Ensuring compliance by the responsible officer with the treasury management policy statement and treasury management practices and that they comply with the law.
- b) Being satisfied that any proposal to vary treasury policy or practice complies with law or any code of practice.
- c) Giving advice to the responsible officer when advice is sought.

5.4.5. Internal Audit

The responsibilities of Internal Audit will be: -

- a) Reviewing compliance with approved policy and treasury management practices.
- b) Reviewing division of duties and operational practice.
- c) Assessing value for money from treasury activities.
- d) Undertaking probity audit of treasury function.

5.5 Absence Cover Arrangements

The Finance Manager is also the deputy S151 Officer. The Finance Manager will also ensure that cover is available for the Finance Officer (Exchequer Services) and other treasury management officers as necessary.

5.6 Dealing Limits

The following posts are authorised to deal:

- The Head of Finance: limited to investments and loans of £5m per transaction. Amounts in excess of this limit should be by Scheme of Delegation.

Responsible Section/Team	Finance	Version/Status	2020/21 v1
Responsible Author	Finance Manager	Report submitted to	Full Council
Date Amended now	Jan 2020	Meeting date	26 Feb 2020
Due for Review	Feb 2021	Page	22

5.7 Policy on Brokers' Services

It is this Council's policy to rotate business between brokers.

5.8 Policy on Taping of Conversations

It is not this Council's policy to tape brokers conversations.

5.9 Direct Dealing Practices

The Council will consider dealing direct with counterparties if it is appropriate and the Council believes that better terms will be available. At present, most deals are arranged by this method. There are certain types of accounts and facilities, however, where direct dealing is required, as follows;

- Business Reserve Accounts:
- Call Accounts:
- Money Market Funds.

5.10 Settlement Transmission Procedures

A formal letter signed by an agreed bank signatory setting out each transaction must be sent to the local authority's bankers where preliminary instructions have been given by telephone. For payments a transfer will be made through BACs or CHAPs to be completed by the appropriate bank deadlines in place that day.

5.11 Documentation Requirements

For each deal undertaken a record should be prepared giving details of dealer, amount, period, counterparty, interest rate, dealing date, payment date(s), broker.

5.12 Arrangements Concerning the Management of Third-Party Funds.

The Council does not currently manage any third-party funds. Trust funds are now held and administered by the Community Foundation for Lancashire.

5.13 Council Cheque and Bank Signatories

A list of the posts delegated with cheque and bank signatory authority are included within the appendices to the Treasury Management Strategy Statement.

Responsible Section/Team	Finance	Version/Status	2020/21 v1
Responsible Author	Finance Manager	Report submitted to	Full Council
Date Amended now	Jan 2020	Meeting date	26 Feb 2020
Due for Review	Feb 2021	Page	23

TMP 6 Reporting Requirements and Management Information Arrangements

6.1 Annual programme of reporting

- a) Annual reporting requirements before the start of the year: -
 - a. review of the organisation's approved clauses, treasury management policy statement and practices
 - b. strategy report on proposed treasury management activities for the year comprising of the Treasury Management Strategy Statement, Annual Investment Strategy and Minimum Revenue Provision Policy Statement
 - c. capital strategy to give a longer term view of the capital programme and treasury management implications thereof beyond the three year time horizon for detailed planning
- b) Regular review by Cabinet within the Financial Monitoring Reports
- c) Annual review report after the end of the year within the out-turn Financial Monitoring Report.

6.2 Annual Treasury Management Strategy Statement (TMSS)

1. The Treasury Management Strategy Statement sets out the specific expected treasury activities for the forthcoming financial year. This strategy will be submitted to the Cabinet and then to the full Council for approval before the commencement of each financial year.
2. The formulation of the annual Treasury Management Strategy Statement involves determining the appropriate borrowing and investment decisions in the light of the anticipated movement in both fixed and shorter -term variable interest rates. For instance, this Council may decide to postpone borrowing if fixed interest rates are expected to fall, or borrow early if fixed interest rates are expected to rise.
3. The Treasury Management Strategy Statement is concerned with the following elements:
 - a) Prudential and Treasury Indicators
 - b) current Treasury portfolio position
 - c) borrowing requirement
 - d) prospects for interest rates
 - e) borrowing strategy
 - f) policy on borrowing in advance of need
 - g) debt rescheduling
 - h) investment strategy
 - i) creditworthiness policy
 - j) policy on the use of external service providers
 - k) any extraordinary treasury issue
 - l) the MRP/VRP strategy

Responsible Section/Team	Finance	Version/Status	2020/21 v1
Responsible Author	Finance Manager	Report submitted to	Full Council
Date Amended now	Jan 2020	Meeting date	26 Feb 2020
Due for Review	Feb 2021	Page	24

4. The Treasury Management Strategy Statement will establish the expected move in interest rates against alternatives (using all available information such as published interest rate forecasts where applicable), and highlight sensitivities to different scenarios.

6.3 The Annual Investment Strategy

Included within the Treasury Management Strategy Statement is the report on the Annual Investment Strategy which sets out the following: -

- a) The Council's risk appetite in respect of security, liquidity and optimum performance
- b) The definition of high credit quality to determine what are specified investments as distinct from non specified investments
- c) Which specified and non specified instruments the Council will use
- d) Whether they will be used by the in house team, external managers or both (if applicable)
- e) The Council's policy on the use of credit ratings and other credit risk analysis techniques to determine creditworthy counterparties for its approved lending list
- f) Which credit rating agencies the Council will use
- g) How the Council will deal with changes in ratings, rating watches and rating outlooks
- h) Limits for individual counterparties and group limits
- i) Country limits
- j) Levels of cash balances
- k) Interest rate outlook
- l) Budget for investment earnings
- m) Policy on the use of external service providers

6.4 The Annual Minimum Revenue Provision Policy Statement

This statement will be submitted as one element of the Annual Treasury Management Strategy Statement and will set out how the Council will make revenue provision for repayment of its borrowing using the four options for so doing.

6.5 Policy on Prudential and Treasury Indicators

1. The Council approves before the beginning of each financial year a number of treasury limits which are set through Prudential and Treasury Indicators.
2. The responsible officer is responsible for incorporating these limits into the Annual Treasury Management Strategy Statement, and for ensuring compliance with the limits. Should it prove necessary to amend these limits, the responsible officer shall submit the changes for approval to the full Council

6.6 Regular and midyear review

The Council will review its treasury management activities and strategy on at least a six monthly basis, though in practice as part of regular financial monitoring to Cabinet. This review will consider the following:

- a) activities undertaken
- b) variations (if any) from agreed policies/practices

Responsible Section/Team	Finance	Version/Status	2020/21 v1
Responsible Author	Finance Manager	Report submitted to	Full Council
Date Amended now	Jan 2020	Meeting date	26 Feb 2020
Due for Review	Feb 2021	Page	25

- c) interim performance report
- d) regular monitoring
- e) monitoring of treasury management indicators for local authorities.

6.7 Management Information Reports, including a year-end performance report

Management information reports will be prepared for each Cabinet meeting, the final report going to the first available Cabinet after the year-end. These reports will contain the following information: -

- a) a summary of transactions executed (may want to add brokers used and fees paid) and their revenue (current effects);
- b) measurements of performance including effect on loan charges/investment income;
- c) degree of compliance with original strategy and practices and explanation of variances.
- d) any non compliance with Prudential limits or other treasury management limits.

6.8 Publication of Treasury Management Reports

Treasury Management information reports will be prepared for each Cabinet meeting and these are available as part of the agenda documents on the Council's website at www.rossendale.gov.uk .

The Annual Treasury Management Strategy Statement and the Treasury Management Practices are reviewed at the Full Council meeting each February and are again available as part of the agenda documents on the Council's website at www.rossendale.gov.uk .

Responsible Section/Team	Finance	Version/Status	2020/21 v1
Responsible Author	Finance Manager	Report submitted to	Full Council
Date Amended now	Jan 2020	Meeting date	26 Feb 2020
Due for Review	Feb 2021	Page	26

TMP 7 BUDGETING, ACCOUNTING AND AUDIT ARRANGEMENTS

7.1 Statutory/Regulatory Requirements

The accounts are drawn up in accordance with the Code of Practice on Local Authority Accounting in Great Britain that is recognised by statute as representing proper accounting practices. The Council has also adopted in full the principles set out in CIPFA's 'Treasury Management in the Public Services - Code of Practice' (the 'CIPFA Code'), together with those of its specific recommendations that are relevant to this Council's treasury management activities.

7.2 Sample Budgets / Accounts / Prudential and Treasury Indicators

The Head of Finance will prepare at least a three year medium term financial plan with Prudential and Treasury Indicators for treasury management which will incorporate the budget for the forthcoming year and provisional estimates for the following two years. This will bring together all the costs involved in running the function, together with associated income. The Head of Finance will exercise effective controls over this budget and monitoring of performance against Prudential and Treasury Indicators, and will report upon and recommend any changes required in accordance with TMP6.

7.3 List of Information Requirements of External Auditors.

- Reconciliation of loans outstanding in the financial ledger to Treasury Management records
- Maturity analysis of loans outstanding
- Certificates for new long term loans taken out in the year
- Reconciliation of loan interest, discounts received and premiums paid to financial ledger by loan type
- Calculation of loans fund interest and debt management expenses
- Details of interest rates applied to internal investments
- Calculation of interest on working balances
- Interest accrual calculation
- Principal and interest charges reports from the ledgers
- Analysis of any deferred charges
- Calculation of loans fund creditors and debtors
- Annual Treasury Report
- Treasury Management Strategy Statement and Prudential and Treasury Indicators
- Review of observance of limits set by Prudential and Treasury Indicators
- Calculation of the Minimum Revenue Provision
- External fund manager(s) valuations including investment income schedules and movement in capital values (if applicable)

7.4 Monthly Budget Monitoring Report

Monthly Budget Monitoring reports are produced for the Head of Finance with quarterly reports to Cabinet. The report is intended to highlight any variances between budgets and spend in order that the Council can assess its financial position. Details of treasury management activities are included within the Cabinet report.

Responsible Section/Team	Finance	Version/Status	2020/21 v1
Responsible Author	Finance Manager	Report submitted to	Full Council
Date Amended now	Jan 2020	Meeting date	26 Feb 2020
Due for Review	Feb 2021	Page	27

TMP 8 Cash and Cash Flow Management

8.1 Arrangements for Preparing/Submitting Cash Flow Statements

Cash flow projections are prepared annually and updated monthly and daily. The annual and monthly cash flow projections are prepared according to known changes in levels of income and expenditure and also changes in payments and receipts dates. These details are supplemented on an ongoing basis by information received of new or revised amounts to be paid or received as and when they are known.

8.2 Bank Statements Procedures

The Council receives daily bank statements via a daily download of data from its bank. All amounts on the statement are checked to source data from Payroll, Creditors etc.

A formal bank reconciliation is undertaken on a monthly basis by the Finance Team.

8.3 Payment Scheduling and Agreed Terms of Trade With Creditors

Our policy is to pay all creditors as per the agreed terms of trading.

8.4 Arrangements for Monitoring Debtors / Creditors Levels

The Finance Manager is responsible for monitoring the levels of debtors and creditors.

8.5 Procedures for Banking of Funds

All money received by an officer on behalf of the Council will, without unreasonable delay, be passed to the Exchequer Team to deposit in the Council's banking accounts. Cash and cheques banked the previous day will be taken into account in the daily cash flow.

8.6 Practices Concerning Prepayments to Obtain Benefits

The Council has no formal arrangement in place. Where such opportunities arise, the prepayment would be sought and authorised by the Head of Finance.

Responsible Section/Team	Finance	Version/Status	2020/21 v1
Responsible Author	Finance Manager	Report submitted to	Full Council
Date Amended now	Jan 2020	Meeting date	26 Feb 2020
Due for Review	Feb 2021	Page	28

TMP 9 Money Laundering

9.1 Proceeds of Crime Act 2002

Money laundering has the objective of concealing the origin of money generated through criminal activity. Legislation has given a higher profile to the need to report suspicions of money laundering. The Proceeds of Crime Act (POCA) 2002 established the main offences relating to money laundering. In summary, these are:

- concealing, disguising, converting, transferring or removing criminal property from England and Wales, from Scotland or from Northern Ireland
- being concerned in an arrangement which a person knows or suspects facilitates the acquisition, retention, use or control of criminal property
- acquiring, using or possessing criminal property.

These apply to all persons in the UK in a personal and professional capacity. Any person involved in any known or suspected money-laundering activity in the UK risks a criminal conviction. Other offences under the POCA include:

- failure to disclose money-laundering offences
- tipping off a suspect, either directly or indirectly
- doing something that might prejudice an investigation – for example, falsifying a document.

9.2 The Terrorism Act 2000

This act made it an offence of money laundering to become concerned in an arrangement relating to the retention or control of property likely to be used for the purposes of terrorism, or resulting from acts of terrorism. All individuals and businesses in the UK have an obligation to report knowledge, reasonable grounds for belief or suspicion about the proceeds from, or finance likely to be used for, terrorism or its laundering, where it relates to information that comes to them in the course of their business or employment.

9.3 The Money Laundering Regulations 2007, 2012 and 2015

Organisations pursuing relevant business (especially those in the financial services industry regulated by the FSA) are required to appoint a nominated officer and implement internal reporting procedures; train relevant staff in the subject; establish internal procedures with respect to money laundering; obtain, verify and maintain evidence and records of the identity of new clients and transactions undertaken and report their suspicions. In December 2007 the UK Government published the Money Laundering Regulations 2007, which replaced the Money Laundering Regulations 2003.

9.4 Local authorities

Public service organisations and their staff are subject to the full provisions of the Terrorism Act 2000 and subsequent Terrorism Acts and may commit most of the principal offences under the POCA, but are not legally obliged to apply the provisions of the Money Laundering Regulations 2007, 2012 and 2015. However, as responsible public bodies, they should employ policies and procedures which reflect the essence of the UK's anti-terrorist financing, and anti-money laundering, regimes. Accordingly this Council will do the following: -

Responsible Section/Team	Finance	Version/Status	2020/21 v1
Responsible Author	Finance Manager	Report submitted to	Full Council
Date Amended now	Jan 2020	Meeting date	26 Feb 2020
Due for Review	Feb 2021	Page	29

- a) evaluate the prospect of laundered monies being handled by them
- b) determine the appropriate safeguards to be put in place
- c) require every person engaged in treasury management to make themselves aware of their personal and legal responsibilities for money laundering awareness
- d) make all its staff aware of their responsibilities under POCA
- e) appoint a member of staff to whom they can report any suspicions. This person is Head of Finance
- f) in order to ensure compliance is appropriately managed, this Council will require senior management to give appropriate oversight, analysis and assessment of the risks of clients and work/product types, systems for monitoring compliance with procedures and methods of communicating procedures and other information to personnel.
- g) The officer responsible for the creation and monitoring the implementation of a corporate anti money laundering policy and procedures is The Head of Legal and Democratic Services and it shall be a requirement that all services and departments implement this corporate policy and procedures.

9.5 Procedures for Establishing Identity / Authenticity Of Lenders

It is not a requirement under POCA for local authorities to require identification from every person or organisation it deals with. However, in respect of treasury management transactions, there is a need for due diligence and this will be effected by following the procedures below.

The Council does not accept loans from individuals.

All loans are obtained from the PWLB, other local authorities or from authorised institutions under the Financial Services and Markets Act 2000. This register can be accessed through the FSA website on www.fca.gov.uk.

When repaying loans, the procedures in 9.6 will be followed to check the bank details of the recipient.

9.6 Methodologies for Identifying Deposit Takers

In the course of its treasury activities, the Council will only lend money to or invest with those counterparties that are on its approved lending list. These will be local authorities, the PWLB, Bank of England and authorised deposit takers under the Financial Services and Markets Act 2000. The FSA register can be accessed through their website on www.fca.gov.uk.

All transactions will be carried out by BACS or CHAPs for making deposits or repaying loans.

Responsible Section/Team	Finance	Version/Status	2020/21 v1
Responsible Author	Finance Manager	Report submitted to	Full Council
Date Amended now	Jan 2020	Meeting date	26 Feb 2020
Due for Review	Feb 2021	Page	30

TMP 10 Training and Qualifications

The Council recognises that relevant individuals will need appropriate levels of training in treasury management due to its increasing complexity. There are two categories of relevant individuals: -

- a) Treasury management staff employed by the Council
- b) Members charged with governance of the treasury management function

All treasury management staff should receive appropriate training relevant to the requirements of their duties at the appropriate time. The Council operates a Personal Development Review system which identifies the training requirements of individual members of staff engaged on treasury related activities.

Additionally, training may also be provided on the job and it will be the responsibility of the Head of Finance to ensure that all staff under his / her authority receive the level of training appropriate to their duties. This will also apply to those staff who from time to time cover for absences from the treasury management team.

10.1 Details of Approved Training Courses

Treasury management staff and members will go on courses provided by our treasury management consultants, CIPFA, money brokers etc.

10.2 Records of Training Received by Treasury Staff

The People and Policy department will maintain records on all staff and the training they receive.

10.3 Record of Secondment of Senior Management

Records will be kept of senior management who are seconded into the treasury management section in order to gain firsthand experience of treasury management operations.

10.4 Statement of Professional Practice (SOPP)

1. Where the Chief Financial Officer is a member of ICAEW, there is a professional need for the CFO to be seen to be committed to professional responsibilities through both personal compliance and by ensuring that relevant staff are appropriately trained.
2. All staff involved in treasury management activities must also comply with the SOPP.

10.6 Member training records

Records will be kept of all training in treasury management provided to members.

10.7 Members charged with governance

Members charged with diligence also have a personal responsibility to ensure that they have the appropriate skills and training for their role.

Responsible Section/Team	Finance	Version/Status	2020/21 v1
Responsible Author	Finance Manager	Report submitted to	Full Council
Date Amended now	Jan 2020	Meeting date	26 Feb 2020
Due for Review	Feb 2021	Page	31

TMP 11 Use of External Service Providers

11.1 Details of Contracts with Service Providers, Including Bankers, Brokers, Consultants, Advisers

This Council will employ the services of other organisations to assist it in the field of treasury management. In particular, it will use external consultants to provide specialist advice in this ever more complex area. However, it will ensure that it fully understands what services are being provided and that they meet the needs of this organisation, especially in terms of being objective and free from conflicts of interest.

It will also ensure that the skills of the in house treasury management team are maintained to a high enough level whereby they can provide appropriate challenge to external advice and can avoid undue reliance on such advice.

Treasury management staff and their senior management will therefore be required to allocate appropriate levels of time to using the following sources of information so that they are able to develop suitable levels of understanding to carry out their duties, especially in challenge and avoiding undue reliance.

- The quality financial press
- Market data
- Information on government support for banks and
- The credit ratings of that government support

11.1.1 Banking Services

- a) Name of supplier of service is the NatWest Bank.
- b) Regulatory status – banking institution authorised to undertake banking activities by the FSA
- c) The branch address is:
 - 28 Bank Street
 - Rawtenstall
 - Rosendale
 - Lancashire
 - BB4 8TS
 Tel :- 0151 802 9354 (Business Banking) or
 0845 302 1511 (Branch Banking)
- d) Contract commenced 1992
- e) Cost of service is variable depending on a schedule of tariffs set annually applied to volumes of transactions
- f) Payments are due monthly and quarterly

Responsible Section/Team	Finance	Version/Status	2020/21 v1
Responsible Author	Finance Manager	Report submitted to	Full Council
Date Amended now	Jan 2020	Meeting date	26 Feb 2020
Due for Review	Feb 2021	Page	32

11.1.2 Money-Broking Services

The Council may use money brokers for temporary borrowing and investment and long term borrowing. It will seek to give an even spread of business amongst the approved brokers.

11.1.3 Consultants'/Advisers' Services

Treasury Consultancy Services

The Council will seek to take expert advice on interest rate forecasts, annual treasury management strategy, timing for borrowing and lending, debt rescheduling, use of various borrowing and investment instruments, how to select credit worthy counterparties to put on its approved lending list etc.

The performance of consultants will be reviewed annually by the Head of Finance to check whether performance has met expectations.

- a) Name of supplier of service is Link Treasury Solutions. Their address is 65 Gresham Street, London, EC2V 7NQ
- b) Regulatory status: investment adviser authorised by the FCA
- c) Cost of service in 2019/20 was £7,500.
- d) Payments are due bi-annually in April and October

11.1.4 Procedures and Frequency for Tendering Services

As per the Council's contract procedure rules.

Responsible Section/Team	Finance	Version/Status	2020/21 v1
Responsible Author	Finance Manager	Report submitted to	Full Council
Date Amended now	Jan 2020	Meeting date	26 Feb 2020
Due for Review	Feb 2021	Page	33

Responsible Section/Team	Finance	Version/Status	2020/21 v1
Responsible Author	Finance Manager	Report submitted to	Full Council
Date Amended now	Jan 2020	Meeting date	26 Feb 2020
Due for Review	Feb 2021	Page	34

TMP 12 Corporate Governance

12.1.1 List of documents to be made available for public inspection

- a. The Council is committed to the principle of openness and transparency in its treasury management function and in all of its functions.
- b. It has adopted the CIPFA Code of Practice on Treasury management and implemented key recommendations on developing Treasury Management Practices, formulating a Treasury Management Policy Statement and implementing the other principles of the Code.
- c. The following documents are available for public inspection: -
 - Treasury Management Strategy Statement
 - including the Annual Investment Strategy
 - Treasury Management Policy Statement
 - Minimum Revenue Provision Policy Statement
 - Treasury Management monitoring reports produced as part of the Council's regular financial monitoring reports to Cabinet.
 - Annual Statement of Accounts
 - Annual Revenue Budget and MTFS
 - Capital Strategy and 3 Year Capital Programme
 - Minutes of Council / Cabinet / committee meetings
 - Third party expenditure via quarterly corporate spend analysis published on the website to comply with the coalition government's transparency agenda.

Responsible Section/Team	Finance	Version/Status	2020/21 v1
Responsible Author	Finance Manager	Report submitted to	Full Council
Date Amended now	Jan 2020	Meeting date	26 Feb 2020
Due for Review	Feb 2021	Page	35

TMP 13 Treasury management practices for non-treasury investments

This Council recognises that investments taken for non-treasury management purposes require careful investment management. Such investments include loans supporting service outcomes, investments in subsidiaries, or investment property portfolios.

For Rossendale Borough Council this could include the one-third investment in the Rossendale Together Barnfield Partnership and the land ownership at the Morrisons site in Bacup, the latter being held on the Council's Balance Sheet at a net book value of £550k at the 31st March 2019. During 2020/21 officers will consider these investments and prepare the information suggested below if they are determined to meet the definition of non-treasury investments.

The Council's annual treasury management strategy, Investment Strategy and similar documents will cover all the organisation's investments, and will set out, where relevant, specific policies and arrangements for non-treasury investments.

This schedule will include a summary of existing material investments, subsidiaries, joint ventures and liabilities including financial guarantees and contingent liabilities and the authority's risk exposure. It will be recognised that the risk appetite for these activities may differ from that for treasury management.

CIPFA suggests that authorities should replicate TMP 1-12 under TMP 13, as far as this is relevant, practicable and applicable. It particularly listed TMPs 1, 2, 5, 6, and 10. In this case, clients may feel that non treasury investments should be in a completely separate document to the TMPs covering treasury management.

Information suggested for non-treasury investments:

1.1 Risk management

The cross sectoral guidance notes state that authorities should be clear as to what powers have been used for each non treasury investment. Clients may therefore want to consider drawing up a summary listing of each non-treasury investment and detailing against each one such things as e.g.: -

- Name
- Date investment made
- Cost
- Expected income
- Approval by x committee / full council / officer (if using delegated authority)
- Legal power used
- Purpose e.g. income generation
- Service (where relevant)

This list could be sub divided into various categories e.g.: -

- Service investments
- Commercial investments taken for mainly financial reasons: -

Responsible Section/Team	Finance	Version/Status	2020/21 v1
Responsible Author	Finance Manager	Report submitted to	Full Council
Date Amended now	Jan 2020	Meeting date	26 Feb 2020
Due for Review	Feb 2021	Page	36

- Property inside the local authority area
- Property outside the local authority area
- Investments in subsidiaries
- Investments in authority owned companies
- Council owned commercial / industrial estates
- Loans to other bodies
- Loan guarantees

The cross sectoral guidance notes also suggest that the following should be documented for each investment: -

- The extent to which the capital invested is placed at risk
- The impact of any potential losses on the financial sustainability of the organisation
- Dates for periodic review to take account of changes in market and other conditions.
- Names of officers or title of posts outside of the treasury management team who are responsible for each non treasury investment and periodic monitoring

Responsible Section/Team	Finance	Version/Status	2020/21 v1
Responsible Author	Finance Manager	Report submitted to	Full Council
Date Amended now	Jan 2020	Meeting date	26 Feb 2020
Due for Review	Feb 2021	Page	37