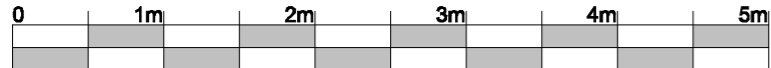




06 02 2020

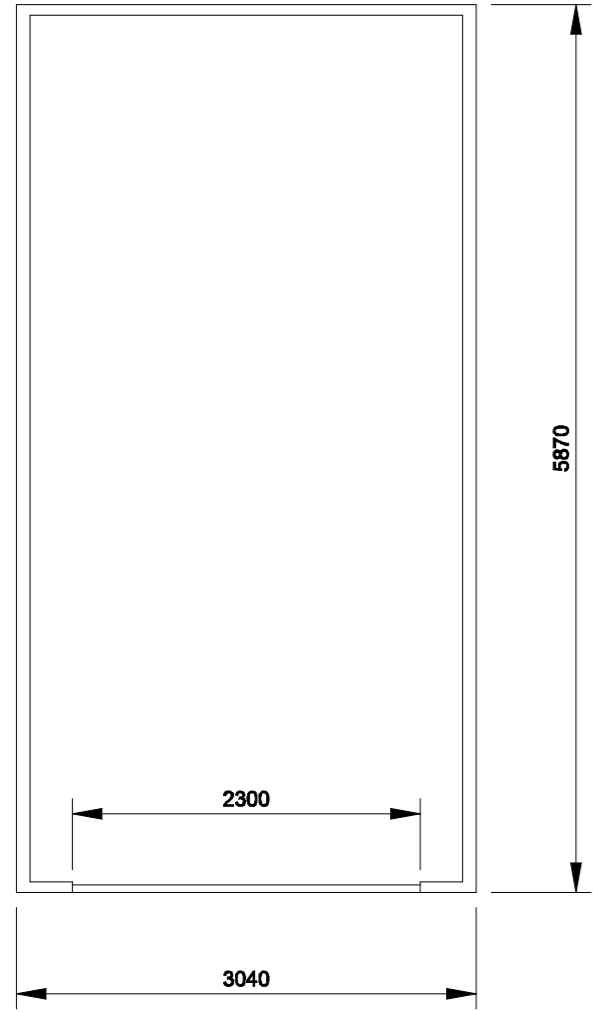


06 02 2020

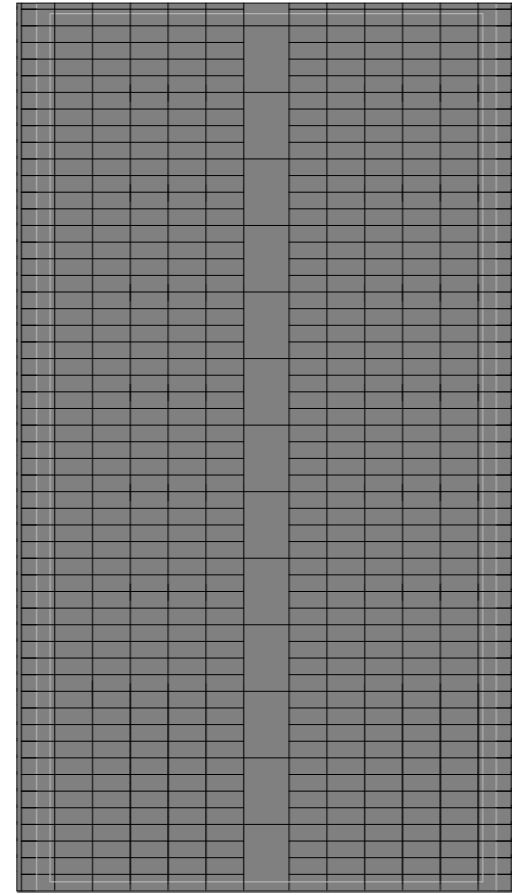


SCALE 1:50

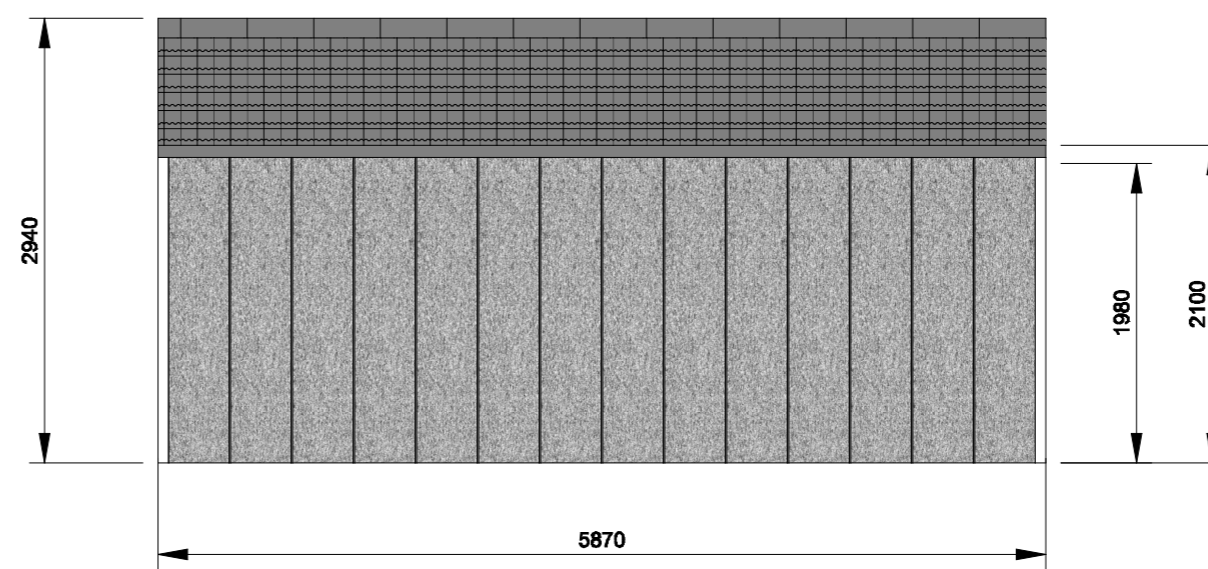
**PLAN**



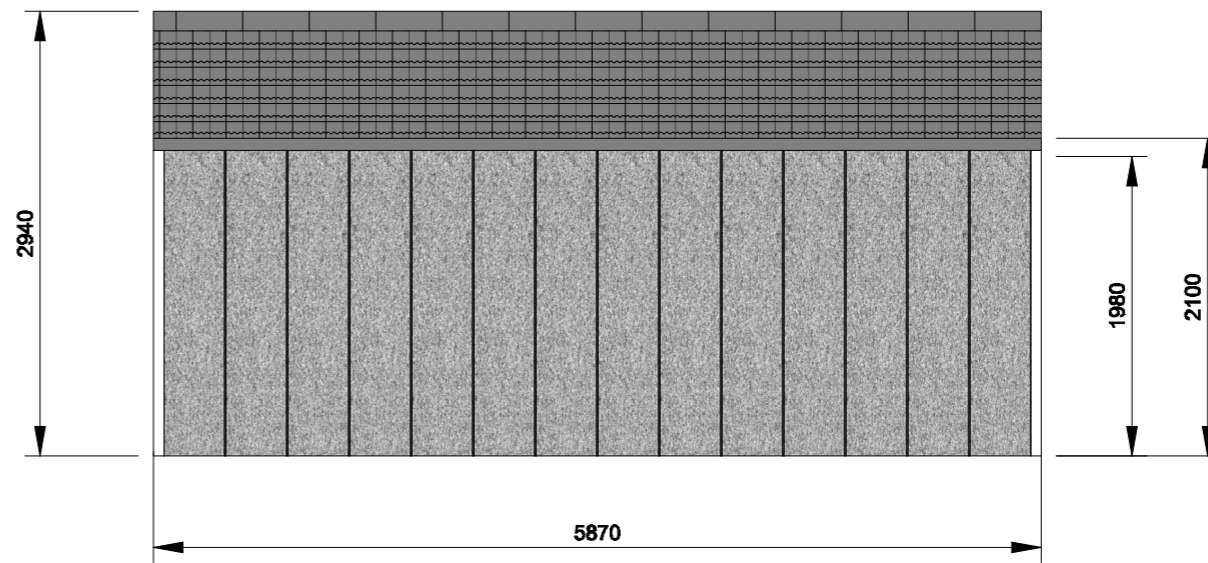
**ROOF**



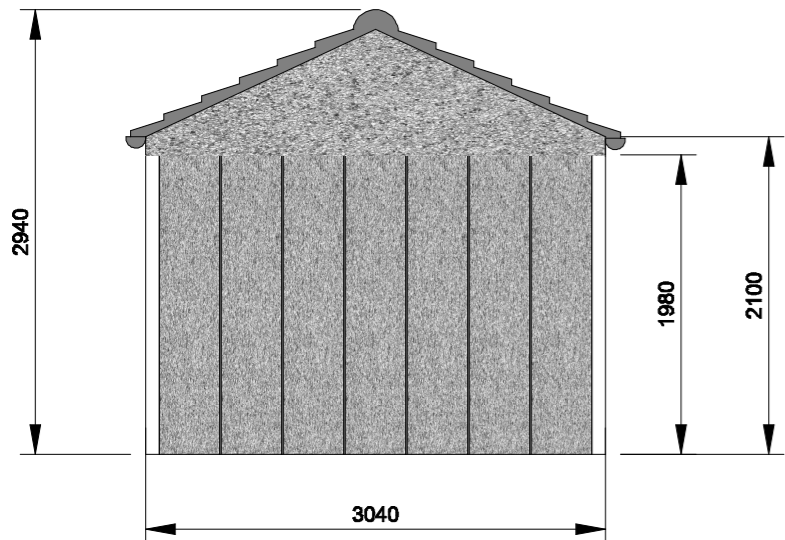
**RH ELEVATION**



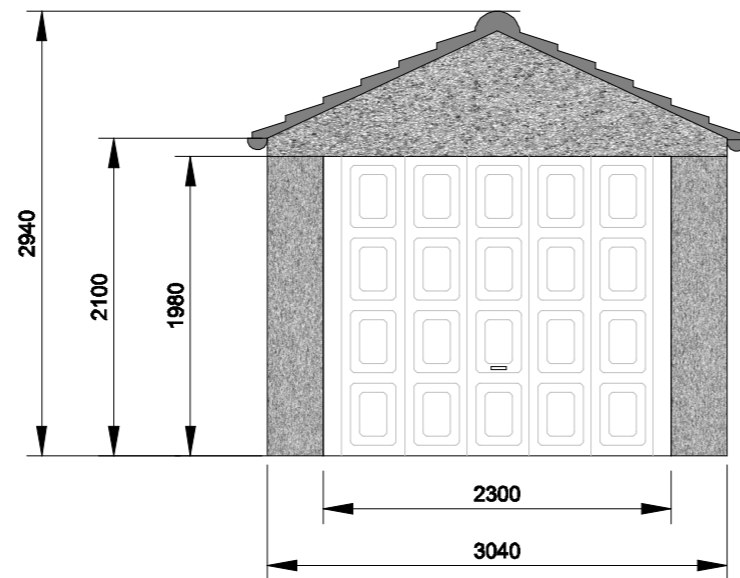
**LH ELEVATION**



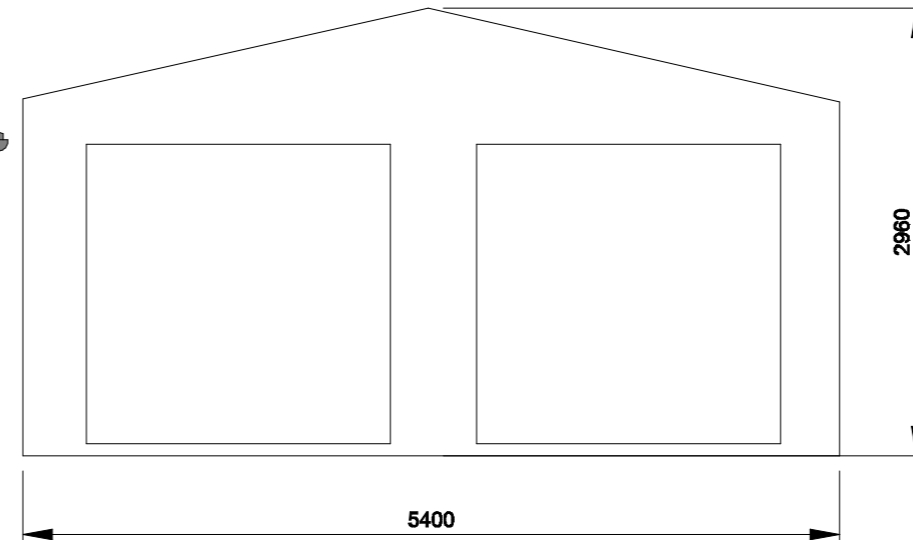
**REAR ELEVATION**



**FRONT ELEVATION**



**EXISTING FRONT ELEVATION**



BUILDING SPECIFICATION	
STYLE:	Apex
ROOF TYPE:	Apex
LENGTH:	5870mm
WIDTH:	3040mm
EAVES HEIGHT:	2100mm
RIDGE HEIGHT:	2940mm
CONCRETE PANELS	
Connected with 6mm steel bolts	
HEIGHT:	2100mm
THICKNESS:	62mm
FINISH: LEFT	Multispar/roughcast
RIGHT	Multispar/roughcast
EXTERNAL WALLS	
FINISH: FRONT	Multispar/roughcast
REAR	Multispar/roughcast
ROOF COVERING	
Supported by wooden trusses fixed to panels at 800mm centres.	
COLOUR:	Dark grey
PROFILE:	interlocking tiles
MATERIAL:	Concrete
FASCIAS	
MATERIAL:	Timber
DIMENSIONS:	100 x 20mm
GARAGE DOOR	
STYLE:	Panel effect
COLOUR:	White
FINISH:	Powder coated steel
WIDTH:	2300mm
HEIGHT:	1980mm
TYPE:	"up and over"

PROJECT: Proposed garage Plot 1 Whittle street Rawtenstall BB4 8SB				
DRAWING: Plan, Elevations, Roof, Existing front elevation				
Scale:	Date:	Drawn:	DWG No	REV
A3@1:50	20.12.19	B.Wray	20.12.19 - 1	1