



## Heritage Arcade

View 2 - Eastern Elevation

Drawn by: BP Checked by: CB Date: 15.10.20



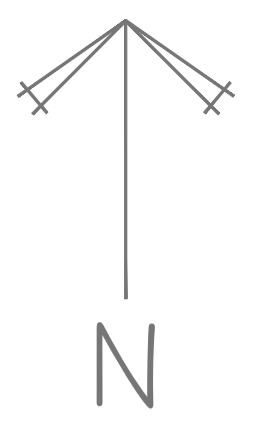


## Heritage Arcade

View 3 - Eastern Elevation

Drawn by: BP Checked by: CB Date: 15.10.20





Backup Road

7 19 21



Longholme Road



**Baldwin Design**  
Consultancy Ltd

Revision:	Date:	By:
Rev 1: Plans amended to include ground floor alterations	02/08/17	CB
Rev 2: Plans amended to include ground floor alterations	02/08/17	CB
Rev 3: Updated to include structural changes	02/11/17	CB
Rev 4: Corrected errors and added details. Dimensions updated to reference	02/11/17	CB
Rev 5: Final design for construction	15/12/17	CB
Rev 6: Amended in accordance with construction consultant comments	15/12/17	CB

Project Title:  
Residential Development

Address:  
Heritage Arcade  
Rawtenstall

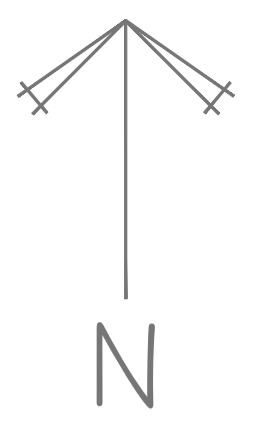
Drawing:  
First Floor Plan

Drawing No:  
HH/HA/FFP/01

Drawn:	Ch'd:	Date:
CB	-	02/10/17
Scale:	Rev:	Paper Size:
1:100	F	A1

Scale 1:100. Level floors. Elevation. Windows. Doors. W.C. etc. See 01/05/17/01. E-mail: baldwin@baldwindesign.co.uk





Backup Road

17

19

21

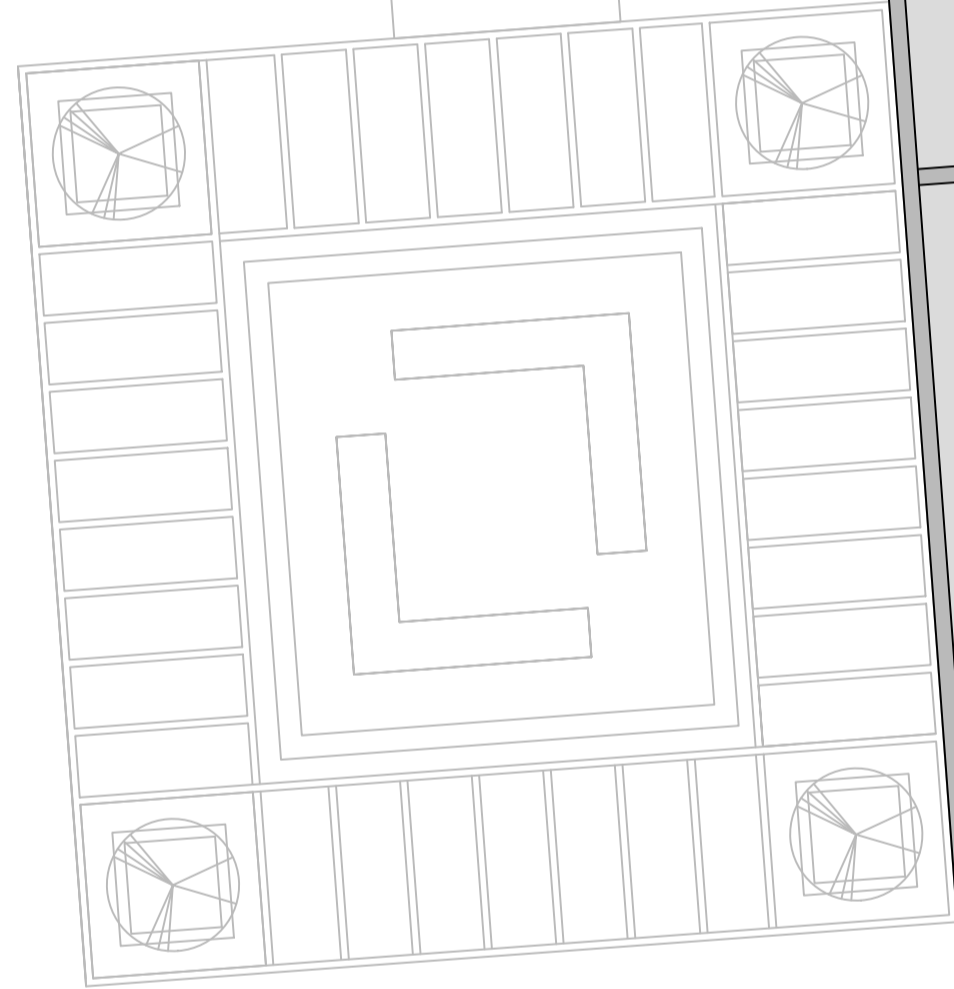
40

39

38

42

37



Longholme Road



**Baldwin Design**  
Consultancy Ltd

Revision:	Date:	By:
Rev 1: Plans amended to be with ground floor alterations	02.08.17	CB
Rev 2: Plans amended to be with ground floor alterations	02.08.17	CB
Rev 3: Updated to reflect structural changes	02.11.17	CB
Rev 4: Corrected errors and added details. Dimensions altered to reference	02.11.17	CB
Rev 5: Final design/contract documents	15.10.17	CB
Rev 6: Amended in accordance with construction consultant comments	15.10.17	CB

Project Title:  
Residential Development

Address:  
Heritage Arcade  
Rawtenstall

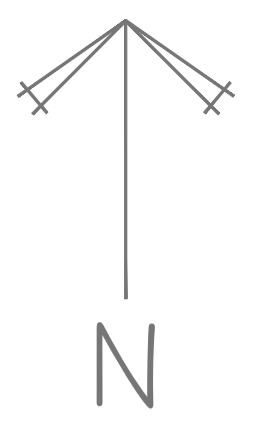
Drawing:  
Fourth Floor Plan

Drawing No:  
HH/HA/FFP/02

Drawn:	Ch'd:	Date:
CB	-	02/10/17
Scale:	Rev:	Paper Size:
1:100	F	A1

Scale 100:1 (Level lines, Elevation lines, Dimensions, etc.)





Bacup Road

9  
21



Sliding Automatic Vehicular Gate With Failsafe Mechanism.  
Gate and Automated Gear Supplied By FAAC (UK) LTD Or Similar Approved Manufacturer

Sliding Automatic Vehicular Gate With Failsafe Mechanism.  
Gate and Automated Gear Supplied By FAAC (UK) LTD Or Similar Approved Manufacturer

Longholme Road

**HURSTWOOD HOLDINGS**

**Baldwin Design**  
Consultancy Ltd

Revision:

Rev 1	Original Plan Approved/changed/added for final planning consent	02/05/17	CB
Rev 2	Office Internal to accommodate surfacing & cable provision	02/05/17	CB
Rev 3	Control gear location changes	02/11/17	CB
Rev 4	Control gear location changes	02/11/17	CB
Rev 5	Control gear location changes	02/11/17	CB
Rev 6	Control gear location changes	02/11/17	CB
Rev 7	Control gear location changes	02/11/17	CB
Rev 8	Control gear location changes	02/11/17	CB
Rev 9	Control gear location changes	02/11/17	CB
Rev 10	Control gear location changes	02/11/17	CB
Rev 11	Control gear location changes	02/11/17	CB
Rev 12	Control gear location changes	02/11/17	CB
Rev 13	Control gear location changes	02/11/17	CB
Rev 14	Control gear location changes	02/11/17	CB
Rev 15	Control gear location changes	02/11/17	CB
Rev 16	Control gear location changes	02/11/17	CB
Rev 17	Control gear location changes	02/11/17	CB
Rev 18	Control gear location changes	02/11/17	CB
Rev 19	Control gear location changes	02/11/17	CB
Rev 20	Control gear location changes	02/11/17	CB
Rev 21	Control gear location changes	02/11/17	CB
Rev 22	Control gear location changes	02/11/17	CB
Rev 23	Control gear location changes	02/11/17	CB
Rev 24	Control gear location changes	02/11/17	CB
Rev 25	Control gear location changes	02/11/17	CB
Rev 26	Control gear location changes	02/11/17	CB
Rev 27	Control gear location changes	02/11/17	CB
Rev 28	Control gear location changes	02/11/17	CB
Rev 29	Control gear location changes	02/11/17	CB
Rev 30	Control gear location changes	02/11/17	CB
Rev 31	Control gear location changes	02/11/17	CB
Rev 32	Control gear location changes	02/11/17	CB
Rev 33	Control gear location changes	02/11/17	CB
Rev 34	Control gear location changes	02/11/17	CB
Rev 35	Control gear location changes	02/11/17	CB
Rev 36	Control gear location changes	02/11/17	CB
Rev 37	Control gear location changes	02/11/17	CB
Rev 38	Control gear location changes	02/11/17	CB
Rev 39	Control gear location changes	02/11/17	CB
Rev 40	Control gear location changes	02/11/17	CB
Rev 41	Control gear location changes	02/11/17	CB
Rev 42	Control gear location changes	02/11/17	CB
Rev 43	Control gear location changes	02/11/17	CB
Rev 44	Control gear location changes	02/11/17	CB
Rev 45	Control gear location changes	02/11/17	CB
Rev 46	Control gear location changes	02/11/17	CB
Rev 47	Control gear location changes	02/11/17	CB
Rev 48	Control gear location changes	02/11/17	CB
Rev 49	Control gear location changes	02/11/17	CB
Rev 50	Control gear location changes	02/11/17	CB

Project Title:  
Residential Development

Address:  
Heritage Arcade  
Rawtenstall

Drawing:  
Ground Floor Plan

Drawing No:  
HH/HA/GFP/01

Drawn: CB  
Chd: -  
Scale: 1:100

Date: 02/10/17  
Paper Size: A1





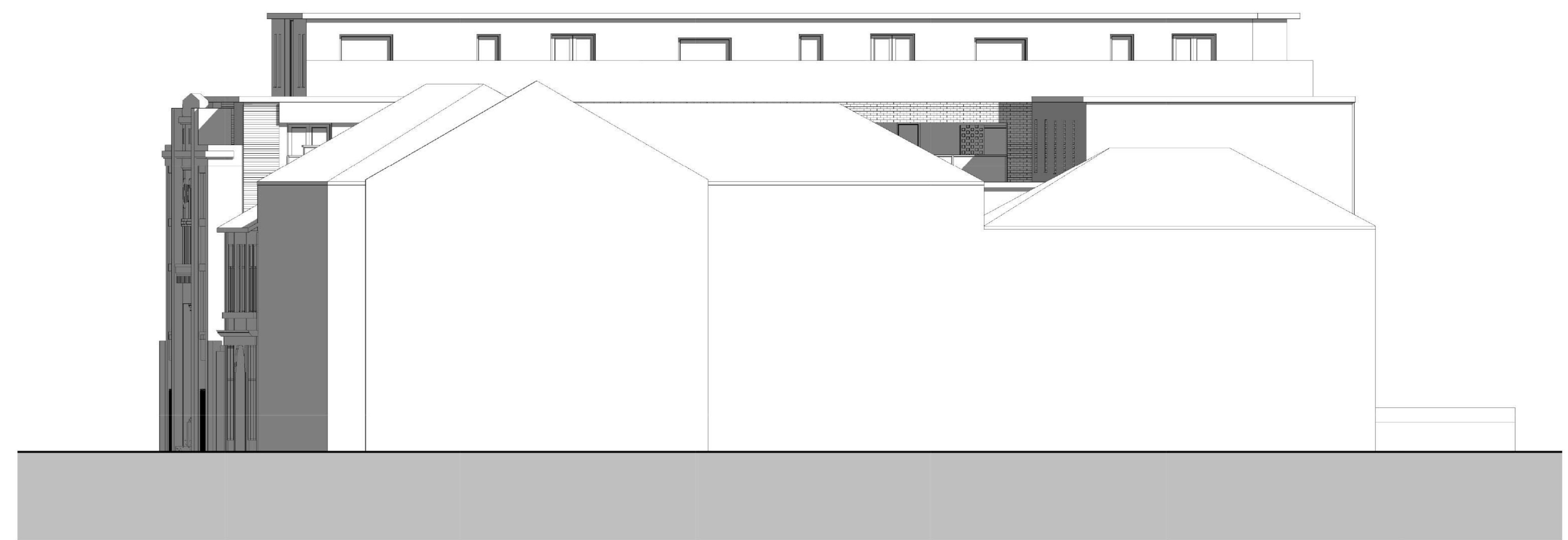
NORTH 1:100



SOUTH 1:100

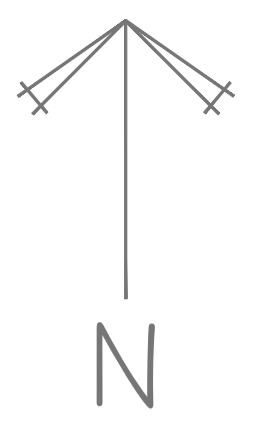


EAST 1:100



WEST 1:100





Backup Road

19

21



Longholme Road



**Baldwin Design**  
Consultancy Ltd

Revision:	Date:	By:
Rev 1: Plans amended to include ground floor alterations	02/08/17	CB
Rev 2: Plans amended to include ground floor alterations	02/08/17	CB
Rev 3: Updated to include structural changes	02/11/17	CB
Rev 4: Corrected errors and added details. Dimensions updated to reference	02/11/17	CB
Rev 5: Final design for construction	15/12/17	CB
Rev 6: Amended in accordance with construction consultant comments	15/12/17	CB

Project Title:  
Residential Development

Address:  
Heritage Arcade  
Rawtenstall

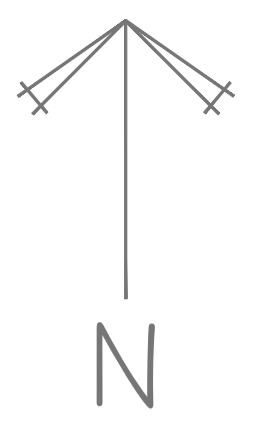
Drawing:  
Second Floor Plan

Drawing No:  
HH/HA/SFP/01

Drawn:	Ch'd:	Date:
CB	-	02/10/17
Scale:	Rev:	Paper Size:
1:100	F	A1

Scale 100:100, Level: Floor, E:\Projects\171017\_Heritage Arcade\171017\_Heritage Arcade.dwg, 15/12/17, 15:15:24





Backup Road

19

21



Longholme Road



**Baldwin Design**  
Consultancy Ltd

Revision	Date	By
Rev 1	02.08.17	CB
Rev 2	02.08.17	CB
Rev 3	02.11.17	CB
Rev 4	15.12.17	CB
Rev 5	15.12.17	CB

Project Title:  
**Residential Development**

Address:  
**Heritage Arcade  
Rawtenstall**

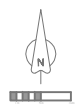
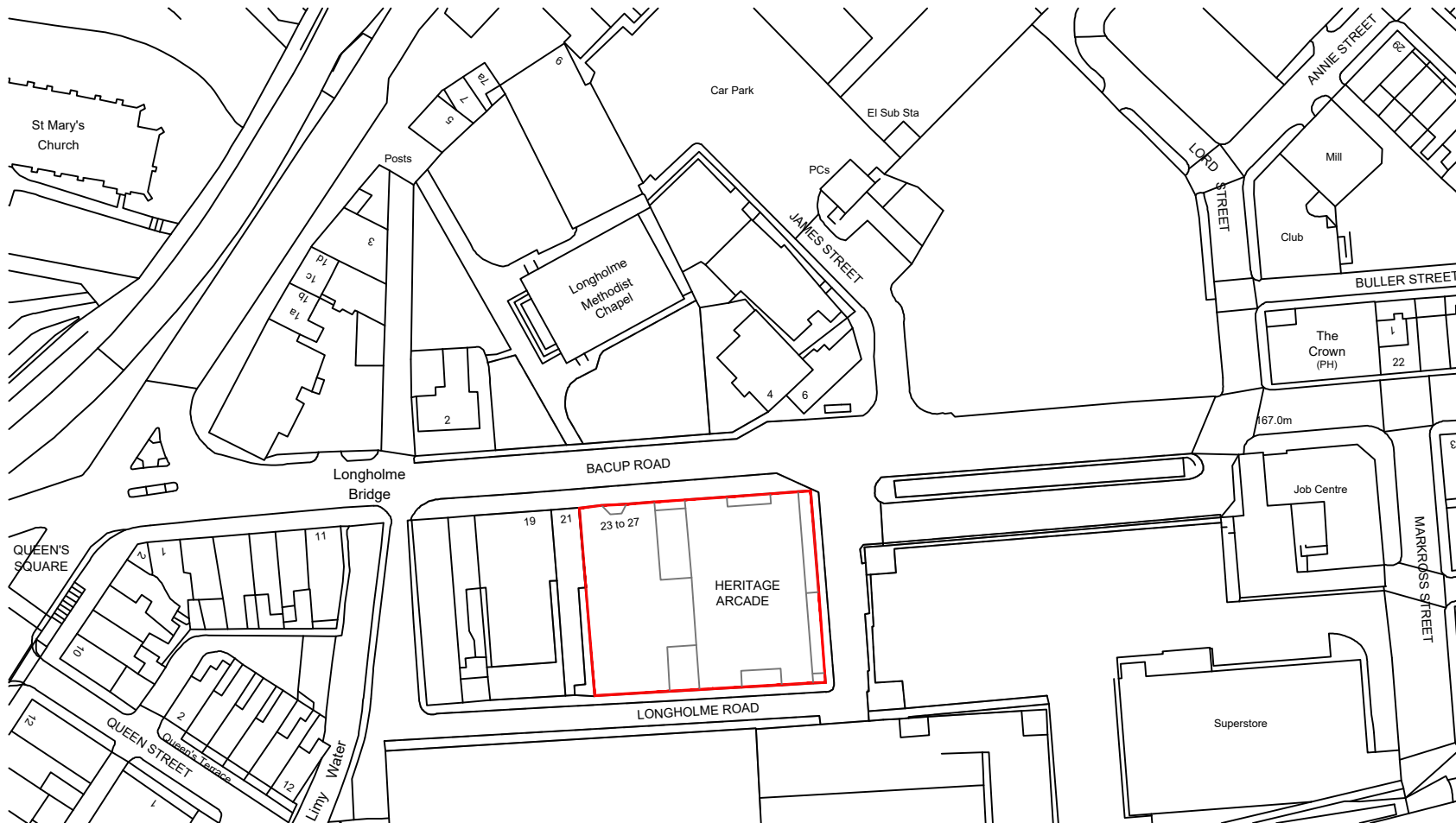
Drawing:  
**Third Floor Plan**

Drawing No:  
**HH/HA/TFP/01**

Drawn:	Chd:	Date:
CB	-	02/10/17
Scale:	Rev:	Paper Size:
1:100	F	A1

Scale 100:1 (Level floor, Elevation, Section, Wall & DW, etc) 01/05/17 (01/17) in case of any changes to the drawing





Ordnance Survey, (c) Crown Copyright 2018. All rights reserved. Licence number 100022432



**Baldwin** **Design**  
 Consultancy Ltd

Revision:	
Project Title: <b>Residential Development</b>	
Address: <b>Heritage Arcade Rawtenstall</b>	
Drawing: Location Plan	
Drawing No: HHHA/LP/01	
Drawn: CB	Chd: -
Scale: 1:1250	Date: 23/12/19
Rev:	Paper Size: A4

Scale 1:1250, Lower House, Bramwood Park, Warrington, Cheshire, WA6 6EW Tel: 01525 747615 e-mail: g.palmer@hurstwooddesign.co.uk