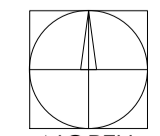


Proposed Site Plan  
Scale 1:200 @ A1

0 2 4 6 8 10m  
SCALE 1:200



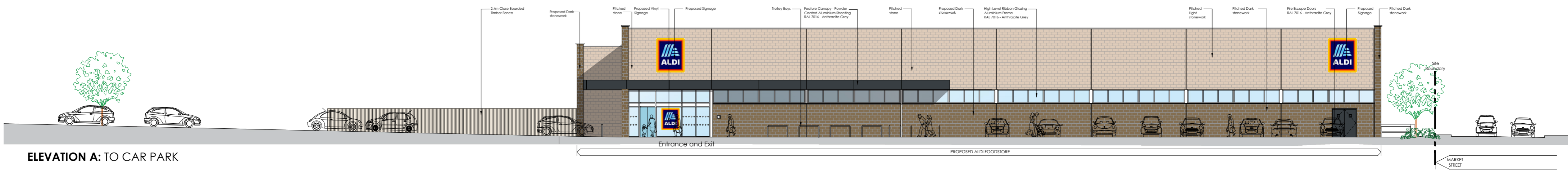
Total Application Boundary  
8,206m<sup>2</sup> (2.02 Acres)

G	290121	KEY ADDED	LEEB	LEEB
F	260121	CYCLE ROUTE AND LANDSCAPE AMENDMENTS ADDED	LEEB	LEEB
E	050121	FURTHER LANDSCAPE AMENDMENTS ADDED	LEEB	LEEB
D	111220	LANDSCAPE AMENDMENTS ADDED	LEEB	LEEB
C	041020	PARKING AMENDED FOLLOWING LPA COMMENTS	RG	LEEB
B	290720	RED LINE AMENDED TO TITLE OWNERSHIP	RG	LEEB
A	300620	SITE PLAN UPDATED TO PLANNING COMMENTS	LEEB	LEEB
Rev	Date	Description	Rev By	Chk'd By

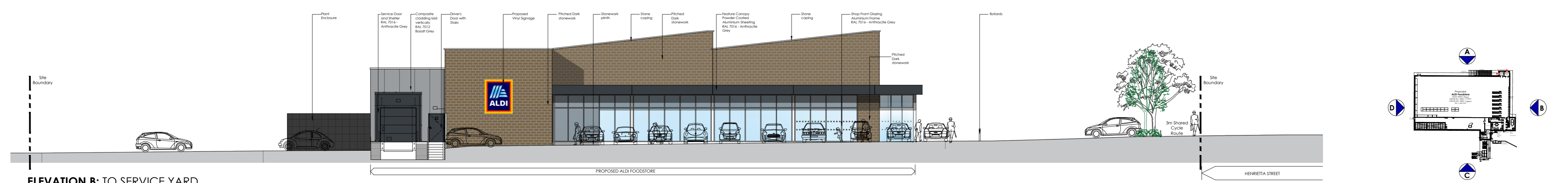
Project Title	PROPOSED ALDI FOODSTORE HENRIETTA STREET MARKET STREET BACUP			
Client	ALDI STORES LTD			
Status	PLANNING			
Scale	1:200	Drawing Size	A1	
Date	DEC 19	Drawn By	KJ	Checked LB
Drawing Title	PROPOSED SITE PLAN			
Job/Dwg No	2768BOL - 102	Rev	G	

- 2 St. Johns North, Wakefield, WF1 3GA t. 01924 291880
- Carvers Warehouse, 77 Dale Street, Manchester, M1 2HG t. 0161 238855
- The Old Rectory, 79 High Street, Newport Pagnell, MK16 6AB t. 01908 211577
- 101 London Road, Reading, RG1 8BT t. 0118 9507700
- 10 Gess Court, St Christophers Place, London, W1U 1JJ t. 0207 4091215

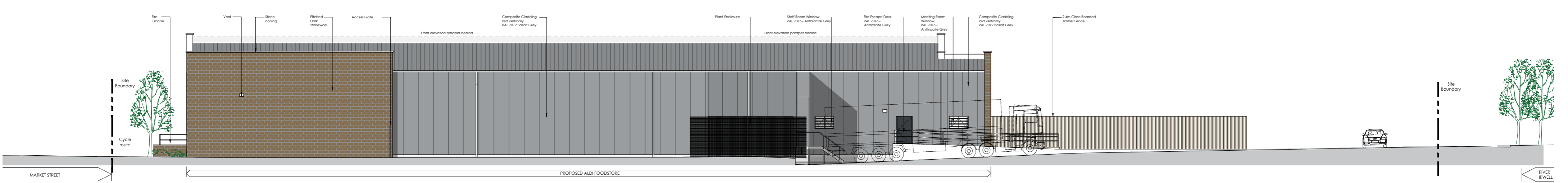
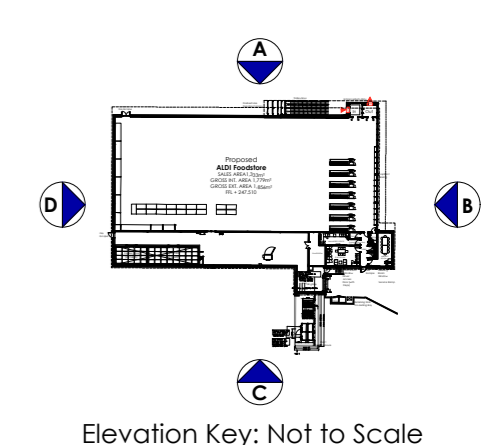




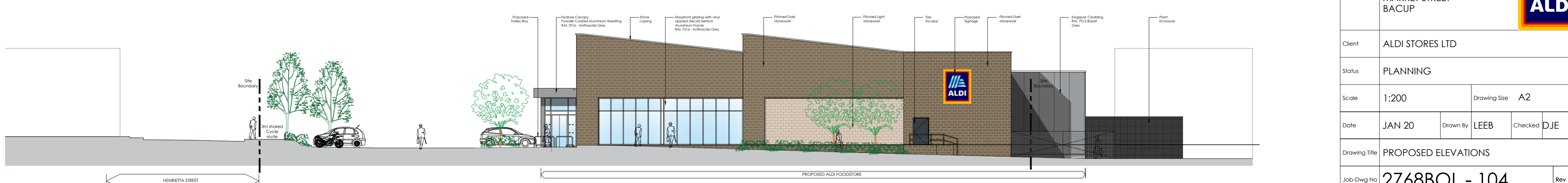
ELEVATION A: TO CAR PARK



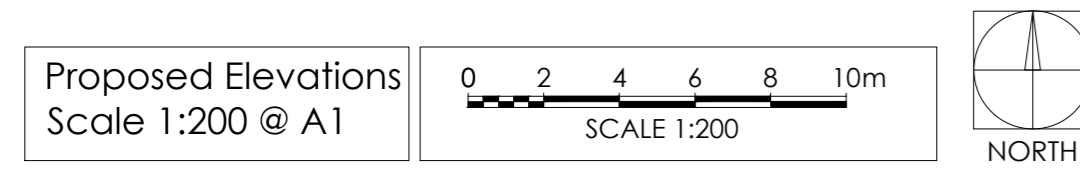
ELEVATION B: TO SERVICE YARD



ELEVATION C: TO COMMERCE STREET



ELEVATION D: TO MARKET STREET



Rev	Date	Description	Rev By	Chk'd By
B	25.01.21	Elevation materials revised	RG	LEEB
A	29.06.20	Elevations updated to pre-application advice	RG	LEEB

Project Title	PROPOSED ALDI FOODSTORE
	HENRIETTA STREET MARKET STREET BACUP
Client	ALDI STORES LTD
Status	PLANNING
Scale	1:200
Drawing Size	A2
Date	JAN 20
Drawn By	LEEB
Checked	DJE
Drawing Title	PROPOSED ELEVATIONS
Job-Dwg No	2768BOL - 104
Rev	B



- 2 St. Johns North, Wakefield, WF1 3QA t. 01924 291800
- Carvers Warehouse, 77 Dale Street, Manchester, M1 2HG t. 0161 2388555
- The Old Rectory, 79 High Street, Newport Pagnell, MK16 8AB t. 01908 211577
- 101 London Road, Reading, RG1 5BY t. 0118 9507700
- 10 Gees Court, St Christophers Place, London, W1U 1JJ t. 0207 4091215





vector  
design concepts

THE  
HARRIS  
PARTNERSHIP



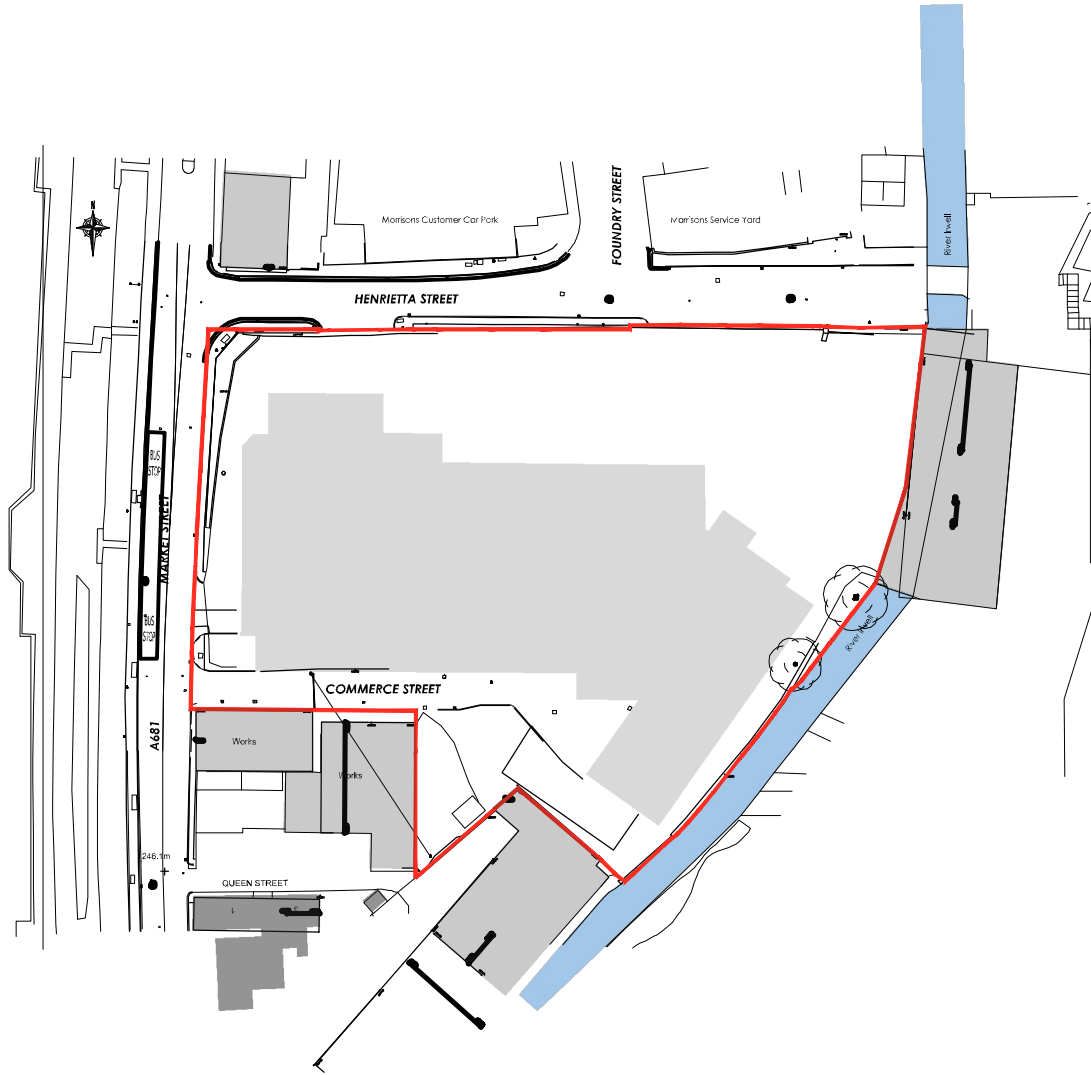
## Proposed Development - Henrietta Street, Bacup

Client: Aldi Stores Ltd

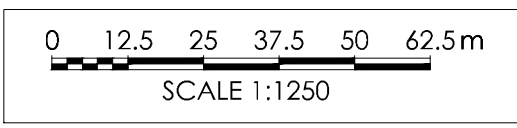
Date: 26/01/2021

Job/Dwg: 2768BOL Bacup CGI01E

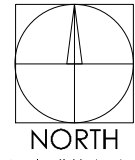
THE  
HARRIS  
PARTNERSHIP



Location Plan  
Scale 1:1250 @ A4



Total Application Boundary  
8,206m<sup>2</sup> (2.02 Acres)



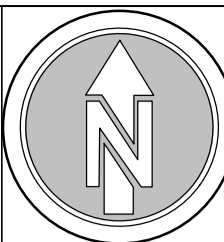
Rev	Date	Description	Rev By	Chk'd By
A	29.07.20	Redline updated	RG	LEEB
Project Title		PROPOSED ALDI FOODSTORE HENRIETTA STREET MARKET STREET BACUP		
Client		ALDI STORES LTD		
Status		PLANNING		
Scale		1:1250	Drawing Size	A4
Date	DEC 19	Drawn By	KJ	Chkd by
				LB
Drawing Title		LOCATION PLAN		
Job-Dwg No	2768BOL - 100			Rev
				A



- 2 St Johns North, Wakefield, WF1 3QA t. 01924 291800
- Carvers Warehouse, 77 Dale Street, Manchester, M1 2HG t. 0161 2388555
- The Old Rectory, 79 High Street, Newport Pagnell, MK16 8AB t. 01908 211577
- 101 London Road, Reading, RG1 5BY t. 0118 9507700
- 10 Gees Court, St Christophers Place, London, W1U 1JJ t. 0207 4091215



NOTE:  
SURROUNDING CONTEXTUAL BUILDINGS  
AND INFORMATION ARE  
BASED ON RECEIVED ORDINANCE  
SURVEY DRAWINGS AND ARE SHOWN  
FOR ILLUSTRATIVE PURPOSES ONLY.  
ASSUMED SITE BOUNDARY IS  
SUBJECT TO CONFIRMATION



**Notes:**

All proposed tree locations are subject to co-ordination with drainage layout and subject to modification depending on the location of underground services and utilities. Drainage engineer to co-ordinate services layout in conjunction with the landscape plan to avoid conflict as much as possible. Allowance to be made at tender stage for the possible requirement for root barriers once the drainage layout is confirmed, CA to be informed immediately once this is available.



**GENERAL WATERING**

All soft landscaping to be subject to a watering regime which is absolutely essential to ensure the continued success of the scheme, particularly during the initial 12 month establishment period. The watering frequency should be as necessary to ensure the continued thriving of all grass, hedges, trees and ornamental planting. During dry periods minimum weekly visits should be made to the site to ensure the soil has not dried out and to action watering if necessary. The soil should be checked for dryness using either a soil moisture sensor or by inserting a spade into the ground to a depth of 300mm to observe the appearance of the soil. If the soil is moist there is no need to water but if it is bone dry then watering procedure should be carried out immediately. Water supply should be from potable mains water or an approved alternative. The full depth of topsoil should be wet without loosening or damaging plants. Any compacted soil should be broken up sufficiently to allow water to reach the rootzone.

**WATERING TREES**

Trees to be watered in accordance with BS 8545-2014 Tree - From Nursery to Independence. Trees should be watered via the installed irrigation / aeration pipes around the base of the trees stem in accordance with the manufacturer's instructions to ensure the water reaches the roots of the tree. Below is a suggested watering regime but this should be used as a guide only and may require modification in times of drought or flood, dependant on the ground conditions at the time, which should be monitored as above:

- March - October: 20 litres to be poured into irrigation pipe twice a week (40 litres in total)

**SOFT LANDSCAPE SPECIFICATION NOTES**

NOTE: All soft landscape works to be carried out in accordance with BS4428:1989.

**SUBSOIL**

Subsoil should be broken up to relieve compaction and aid drainage prior to topsoiling to the following depths:  
- For light and non cohesive subsoils: 300mm  
- For stiff clay and cohesive subsoils: 450mm  
Immediately before spreading topsoil, remove stones larger than 50mm.

**TOPSOIL**

Existing site won topsoil to be reused for soft landscape areas if sufficient quantities are available and the topsoil meets the criteria for multipurpose topsoil as defined in table 1 of BS3882:2015 specification for Topsoil.

If imported topsoil is required it is to be supplied and spread by the main contractor for the approval of the Landscape contractor, in accordance with BS 3882 :2015. To be a natural sandy loam, of medium texture, with a pH between 5.5 and 7.8, not more than slightly stony and free of pernicious weeds. Subsoil to be well broken up prior to top-soiling to relieve compaction. Topsoil depths should be:  
Areas for Ornamental Shrub Planting: minimum 400mm  
Areas for cultivated turf: minimum 150mm

**CULTIVATION**

Weeds to be prevented from seeding or becoming established by applying a suitable herbicide and allowing the correct time to elapse, as directed by the manufacturer. Compacted soil to be broken up to a depth of 100mm, with any stones, grass tufts or rubbish larger than 50mm in any direction to be removed, leaving a regular and even surface. Suitable slow release fertiliser to be supplied and spread @ 50g/m2 to all planted areas.

**CLIMATIC CONDITIONS**

Topsoiling should be carried out in the driest conditions possible - cultivation to be carried out when the soil is moist, friable and not waterlogged or frozen. Topsoil should not be handled during or after heavy rainfall or when it is wetter than the plastic limit as defined by BS 3882. Planting should not take place in waterlogged conditions or when the ground is frozen.

**SOIL AMELIORANT**

Peat-free compost to be spread over ornamental shrub beds @ minimum 50mm depth prior to cultivation.

**TREES**

All trees within shrub beds to be planted in separate pits in accordance with tree planting detail 2768-VL-D01. All plant material to comply with BS 3936 Part 1 :1992, be obtained from a nursery certified by the HTA and transported to site in accordance with the HTA Plant Handling Guide: 1996. All trees to be planted to the original root collar and secured in place with underground guying system in accordance with tree planting detail. All trees to be fitted with aeration and irrigation system in accordance with tree planting detail.

If the trees are to be replanted outside of the planting season (late October - Late March) then containerised stock to be used in lieu of root ball to the same specification - allowance to be made for this at tender stage if required once construction timetable is known and CA informed immediately.

**PROPOSED ORNAMENTAL SHRUB PLANTING**

All shrubs to be positioned as shown on the drawing and to the density and specification noted in the plant schedule. Planting holes to be 150mm wider than the root spread, have the base ground thoroughly broken up before planting and backfilled with peat free compost. All shrubs to be equally spaced throughout the planting areas to the specified density in a staggered arrangement unless otherwise noted in the planting schedule.

**SUBSTITUTIONS:**

Upon submission of evidence that certain materials, including plant materials, are not available at the time of the landscape contract, the Landscape Contractor may be permitted to substitute other materials and plants in exceptional circumstances during the contract with an agreed adjustment of prices. All substitutions shall be of nearest equivalent species and variety to the original specified but shall be subject to approval by the Landscape Architect before any change is made.

**TIMES OF YEAR FOR PLANTING:**

Landscape works to be carried out during the final possible planting periods prior to practical completion of the building and associated engineering works / car park areas in accordance with the following:  
- Native and ornamental trees: During dormant winter period - Late October to late March (only if planted in the planting season otherwise containerised stock to be used).  
- Bare root native transplants: During dormant winter period - Late October to April.  
- Container grown ornamental and specimen shrubs: At any time if ground and weather conditions are favourable.

**MULCH**

75mm depth of 8-35mm ornamental bark mulch (peat-free) to be supplied and spread to all planting areas. Finished mulch level to be installed and maintained at 25mm below any adjacent kerbs or paving surfaces.

**MAINTENANCE**

All planting areas to be maintained to a high standard by the contractor for 12 months after practical completion, to ensure the landscape scheme is successful, and discourage decline of the area.

Minimum frequency of maintenance visits:  
December / January / February & March - 1no. visit each month  
April to November - 2no. visits each month.

Generally, during the first 12 months:

- All planting beds to be re-formed and kept weed free through hand weeding and application of an approved herbicide where appropriate.
- All litter to be picked and removed from landscape areas.
- Mulch to be topped up as required to maintain the specified thickness.
- The condition of all trees is to be regularly checked, with ties and stakes adjusted or replaced as necessary.
- Shrubs to be pruned at appropriate times of year for each species to promote healthy growth and desirable ornamental features.
- All arisings to be removed from site.
- Any defects or plant losses occurring during the first 12 months defects period to be replaced at the contractor's expense.

Following the initial 12 month establishment period the ongoing landscape management will be the responsibility of an commercial landscape maintenance contractor under a landscape maintenance contract.

**Ecological Features Key:**

**BB Proposed Bird Nesting Boxes**  
Product: Vivara Pro Woodstone grey wagtail & clipper nest box  
Location: To be placed along river channel wall  
Quantity: 2No.

**Note:**  
Indicative location of ecological features within the landscape shown on plan. Exact location and installation to be confirmed and supervised onsite by project Ecologist.

**PLANTING SCHEDULES:**

Species	Abb.	Form	Girth	Height (cm)	Clear stem (cm)	Root	Quantity
Acer campestre 'Streetwise'	AcS	Standard Extra Heavy	14-16	min 450	min 220	RB	4
Betula pendula	Bp	Standard Extra Heavy	14-16	min 450	min 220	RB	3
Prunus avium	Pa	Standard Extra Heavy	18-20	min 450	min 220	RB	1
Pyrus calleryana 'Chanticleer'	PcC	Standard Extra Heavy	16-18	min 450	min 220	RB	4
Sorbus aucuparia	Sa	Standard Extra Heavy	18-20	min 450	min 220	RB	2
Tilia cordata 'Rancho'	TcR	Standard Extra Heavy	14-16	min 450	min 220	RB	4

**Specimen Shrub Planting:**

Name	Abb	Height (cm)	Root	Container	Habit	Quantity
Amelanchier lamarckii (Multi Stem Specimen)	Al	175-200/250	RB	/	3 - 5 main stems	1
Phormium 'Apricot Queen'	PAQ	/	C	15L	Triple Crown	3
Phormium cookianum Tenax	PcT	100-125	C	15L	Triple Crown	2
Phormium 'Yellow Wave'	PYW	/	C	10-12L	Triple Crown	3

**Ornamental Shrub Planting:**

Name	Abb	Height (cm)	Root	Container	Habit	Density
Buxus sempervirens	Bs	30-40	C	5L	Bushy	5/m <sup>2</sup>
Cornus sanguinea	Cs	60-80	C	3L	Branched	3/m <sup>2</sup>
Crataegus monogyna	Cm	60-80	C	3L	Branched	3/m <sup>2</sup>
Eleagnus ebbingei 'Limelight'	EeL	40-60	C	3L	Branched	3/m <sup>2</sup>
Euonymus fortunei 'Emerald & Gold'	EfEG	30-40D	C	5L	Bushy	5/m <sup>2</sup>
Euonymus fortunei 'Silver Queen'	EfSQ	30-40D	C	5L	Bushy	5/m <sup>2</sup>
Hedera Helix 'Green Ripple'	HhGR	40-60	C	3L	Sev. Shoots	3/m <sup>2</sup>
Hebe 'Blue Gem'	HbG	30-40	C	3L	Bushy	4/m <sup>2</sup>
Hebe 'Mrs Winder'	HmW	30-40	C	5L	Bushy	4/m <sup>2</sup>
Hebe rakaiensis	Hr	30-40	C	5L	Bushy	5/m <sup>2</sup>
Hebe 'Red Edge'	HRE	30-40D	C	5L	Bushy	5/m <sup>2</sup>
Ilex aquifolium	Ia	60-80	C	3L	Leader & Laterals	3/m <sup>2</sup>
Ligustrum vulgare	Lv	60-80	C	3L	Branched	3/m <sup>2</sup>
Lonicera nitida 'Maigrain'	LnM	30-40	C	3L	Bushy	5/m <sup>2</sup>
Prunus laurocerasus 'Cherry Brandy'	PICB	30-40D	C	3L	Bushy	3/m <sup>2</sup>
Prunus laurocerasus 'Otto Luyken'	PIOL	30-40	C	3L	Bushy	4/m <sup>2</sup>
Ulex europaeus	Ue	40-60	C	3L	Branched	3/m <sup>2</sup>
Viburnum x davidii	Vd	30-40	C	3L	Bushy	5/m <sup>2</sup>
Viburnum tinus 'Eve Price'	VIEP	30-40	C	3L	Bushy	5/m <sup>2</sup>
Viburnum opulus	Vo	40-60	C	3L	Branched	3/m <sup>2</sup>

**SOFT LANDSCAPE KEY:**

- Existing trees to be removed  
In order to facilitate the proposed development.
- Proposed Tree in soft landscape  
Refer to planting schedule for species & specification  
Refer to Vector Tree Detail 2768-VL\_D01
- Proposed Tree in hard landscape  
Refer to planting schedule for species & specification  
Refer to Vector Tree Detail 2768-VL\_D02
- Proposed ornamental shrub planting  
Refer to planting schedule for species & specification
- Proposed specimen shrub planting  
Refer to planting schedule for species & specification
- Proposed ornamental bark mulch surface finish  
500mm bark mulch maintenance strip
- Proposed knee rail  
To Architects Detail

2021.01.28-03	Updated to Architects site plan	FW	AS
2021.01.04	Updated to Architects site plan and LPA comments	FW	AS
2020.12.10	Updated to Architects site plan and comments	FW	AS
2020.11.09	Updated to LPA comments	FW	AS

Project Title	PROPOSED ALDI FOODSTORE HENRIETTA STREET MARKET STREET BACUP	Drawing Title	LANDSCAPE PLAN
Client	ALDI STORES LTD	Job-Dwg No.	2768BOL-VL_L01
Status	PLANNING	Rev	D
Scale	1:250	Drawing Size	A1
Drawn By	FW	Checked By	AS
Date	07/2020		

**vector**  
design concepts

LANDSCAPE DESIGNERS  
4 ST JOHNS NORTH, WAKEFIELD, WF1 3QA. TEL 01924 332056  
web:www.vectorltd.co.uk