



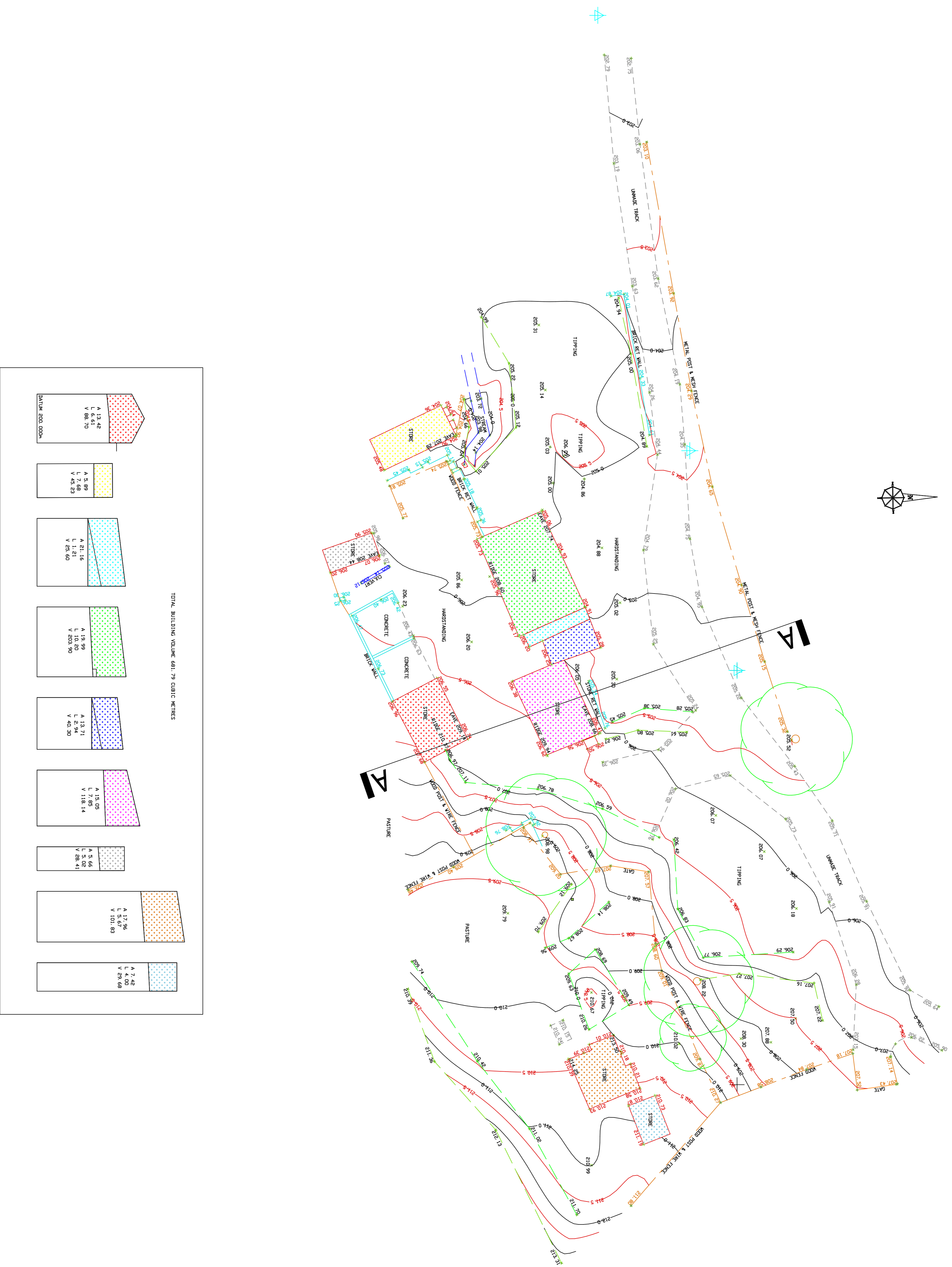
26 02 2021



26 02 2021



26 02 2021



TOTAL BUILDING VOLUME 681.79 CUBIC METRES

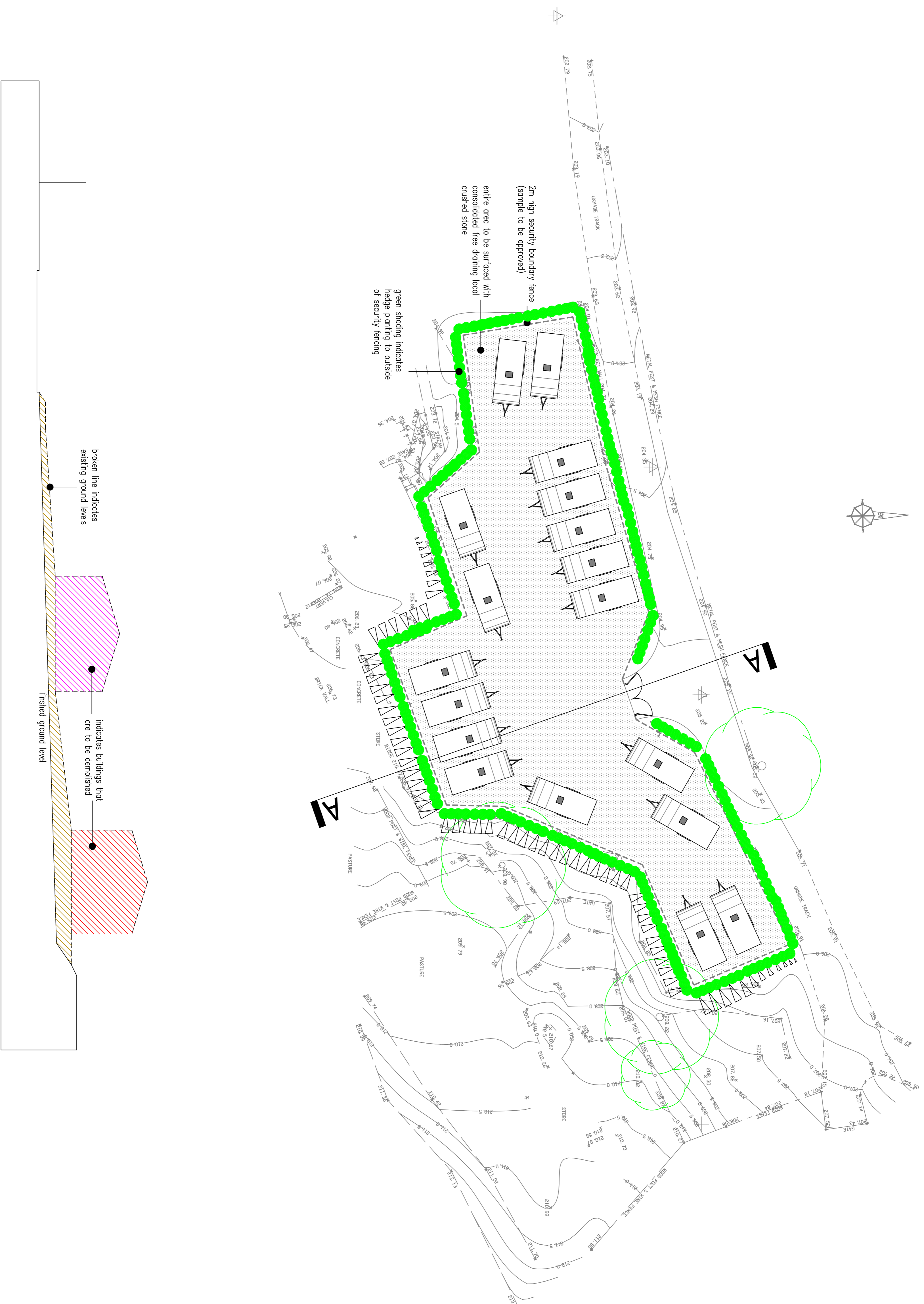
	A 13.42 L 6.61 V 88.70
	A 5.89 L 4.44 V 48.23
	A 21.16 L 1.21 V 25.80
	A 19.99 L 103.50 V 203.50
	A 13.71 L 2.94 V 40.50
	A 15.05 L 7.85 V 118.14
	A 5.66 L 5.02 V 28.41
	A 17.96 L 5.67 V 101.83
	1.74 L 4.95 V 29.68

DATA 200 3000

survey of derelict land behind
Hugh Business Park
Cowpe
Rosendale

0m
 scale 1:200 @ A1
 20m

drawing number KK-26-01-21-EX



total volume of existing buildings on the site that are to be demolished amounts to 681.79m²

volume of typical caravan (6m x 2.5m x 2.5m) amounts to 37.5m²

681.79 / 37.5 = 18

therefore 18 typical caravans on the site does not amount to any increase in the volume of development

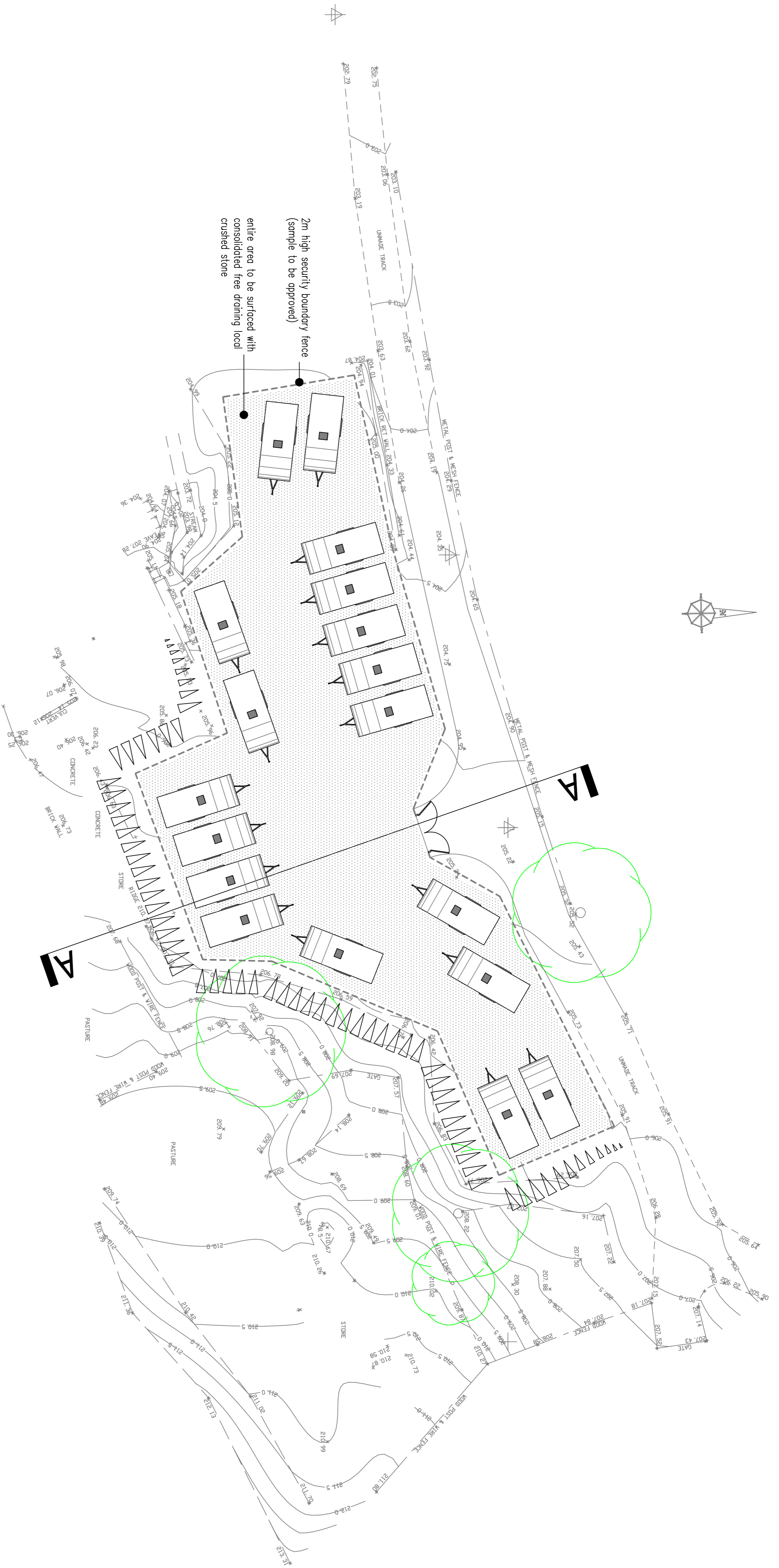
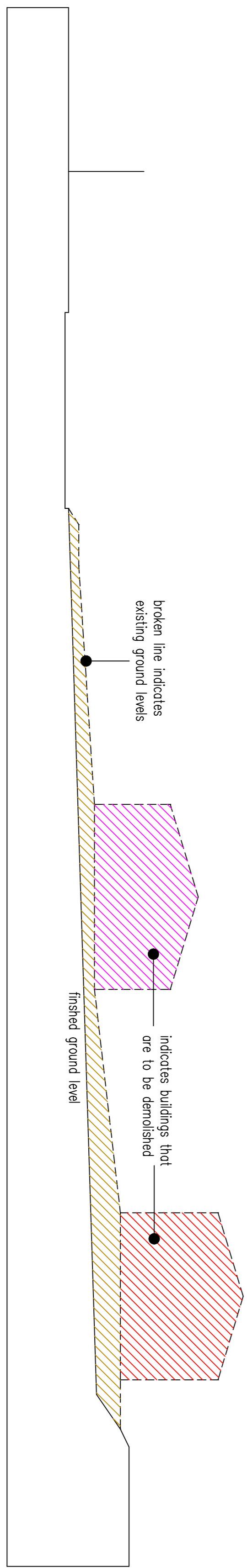
landscaping proposals

proposed caravan storage compound on derelict land behind
Hugh Business Park
Cowpe
Rossendale

0m
 scale 1:200 @ A1
 20m

drawing number KK-26-01-21-PROP

cross section along line A-A



total volume of existing buildings on the site that are to be demolished amounts to 681.79m²

volume of typical caravan (6m x 2.5m x 2.5m) amounts to 37.5m²

681.79 / 37.5 = 18

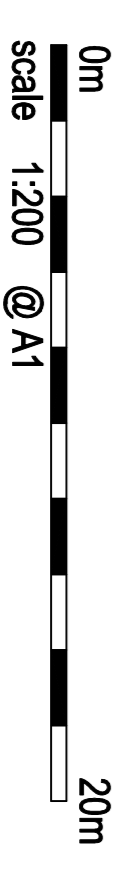
therefore 18 typical caravans on the site does not amount to any increase in the volume of development

proposed caravan storage compound on derelict land behind

Hugh Business Park

Cowpe

Rossendale



drawing number KK-26-01-21-PROP