
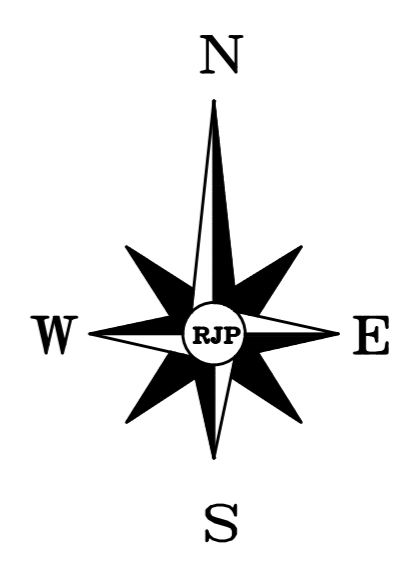


Rev	Date	Revision	Title	Scale	1:1250
Project			NEW PHASE LOCATION PLAN	Date	APR 2019
DOUGLAS ROAD, BACUP				Dwg No	WA-LP-01
				 <b>McDermott HOMES</b> Jupiter House, 1 Mercury Rise, Altham, Lancs BB5 5BY Tel: 01282 774586 Fax: 01282 774616 E. info@mcdermotthomes.co.uk www.mcdermotthomes.co.uk	



- DARLESTONE BUFF  
Roof tiles to be Russell Grampian Slate Gray
- DARLESTONE BUFF BLACK  
Roof tiles to be Russell Grampian Slate Gray

Scale 1:500 @ A1	Title
Date Dec 18	<b>MATERIALS LAYOUT</b>
Dwg No	<b>WA-ML-01a</b>
Rev	
07.10.20	Updated to latest Layout

Project  
**FIELDFARE WAY BACUP**

**McDermott HOMES**  
 Jupiter House, 1 Mercury Rise, Altham, Lancs, BB5 5BY  
 Tel: 01282 774596 Fax: 01282 774616  
 E: info@mcdermotthomes.co.uk  
 www.mcdermotthomes.co.uk

## GARAGE DOOR



## WINDOWS & CILLS

White UPVC



## ROOF TILES

Russell Grampian Roof Tiles (Grey)



## GUTTERING

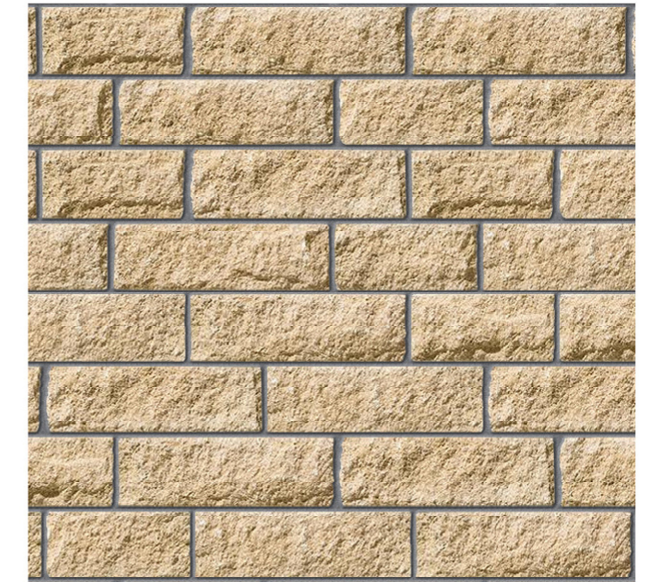
Black Gutters & Downpipes



## WALLING

Darlstone Random Length

Buff - Pitched



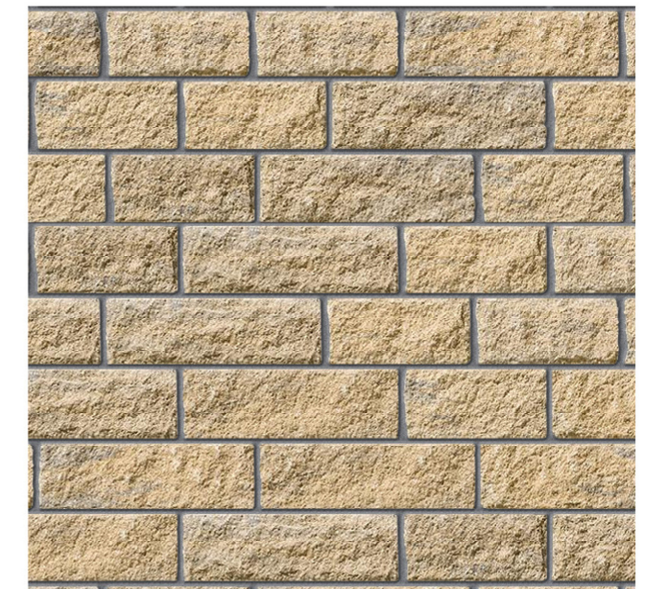
## FRONT DOOR



## FASCIAS & BARGEBOARDS

Black PVCu

Buff & Black - Pitched



# FIELDFARE WAY, BACUP

## MATERIAL PALETTE

Scale NTS @ A3

Date May 2019

Dwg. No.

MP01



Jupiter House, 1 Mercury Rise, Altham, Lancs, BB5 5BY  
T. 01282 774586 F. 01282 774616  
E. info@mcdermothomes.co.uk www.mcdermothomes.co.uk



**SPECIFICATION**  
**GROUND PREPARATION - GENERAL**

**Preparing for topsoil**  
 Grading and cultivation shall be in accordance with BS 4428:1989 section 4. Subsoil that is to receive topsoil shall, whether obviously overcompacted or not, be thoroughly broken up by hand, by heavy rollers, by rollers or front loaders with adequate passes made to thoroughly break up the surface to a depth of 150mm, cleared of all large stones, bricks, perennial weeds, tree roots (including living tree roots), concrete vegetation and other extraneous matter.

**Subsoil grading**  
 Subsoil shall be graded after loosening as above, and this shall be undertaken by the use of a tractor and blade grader on large areas and by a small mechanical grader or by hand on small areas. Graded soil or no stone be traversed by heavy machinery, for grading or any other operation unless specifically indicated otherwise on the drawings.

**Making up levels**  
 When subsoil is compacted in low lying areas to raise formation levels, it shall be lightly consolidated and be broken up ready to receive topsoil. Topsoil shall be applied in a minimum of 100mm, compacted or organic material with any one dimension greater than 100mm. All imported fill material shall be approved by the Landscape Architect prior to spreading on site.

**Supply of topsoil**  
 Topsoil to be supplied shall be approved by the Landscape Architect and details of the source of supply shall be provided in order to ensure that the topsoil is of suitable quality. Topsoil shall be delivered to the site in accordance with BS 4428:1989 section 4.1. The soil shall be free of weeds, roots or perennial weeds, pests, disease, debris, tree roots, sticks, subsoil and foreign matter and shall be capable of being broken down to a fine fib.

**Temporary topsoil heaps**  
 The depositing of temporary heaps of topsoil shall be so arranged that possible damage to existing plants, lawns, pavements, parking, etc. is avoided. Unless otherwise agreed by the Landscape Architect, temporary topsoil heaps shall be on protected ground. Such protection shall take the form of silt fences, plastic sheeting, boards or similar covering. If damage does occur, it shall be made good at the contractor's own expense. Areas excavated to receive topsoil shall not be used as temporary offloading areas. The bottom of the excavation has been loosened off, loading on these areas is prohibited.

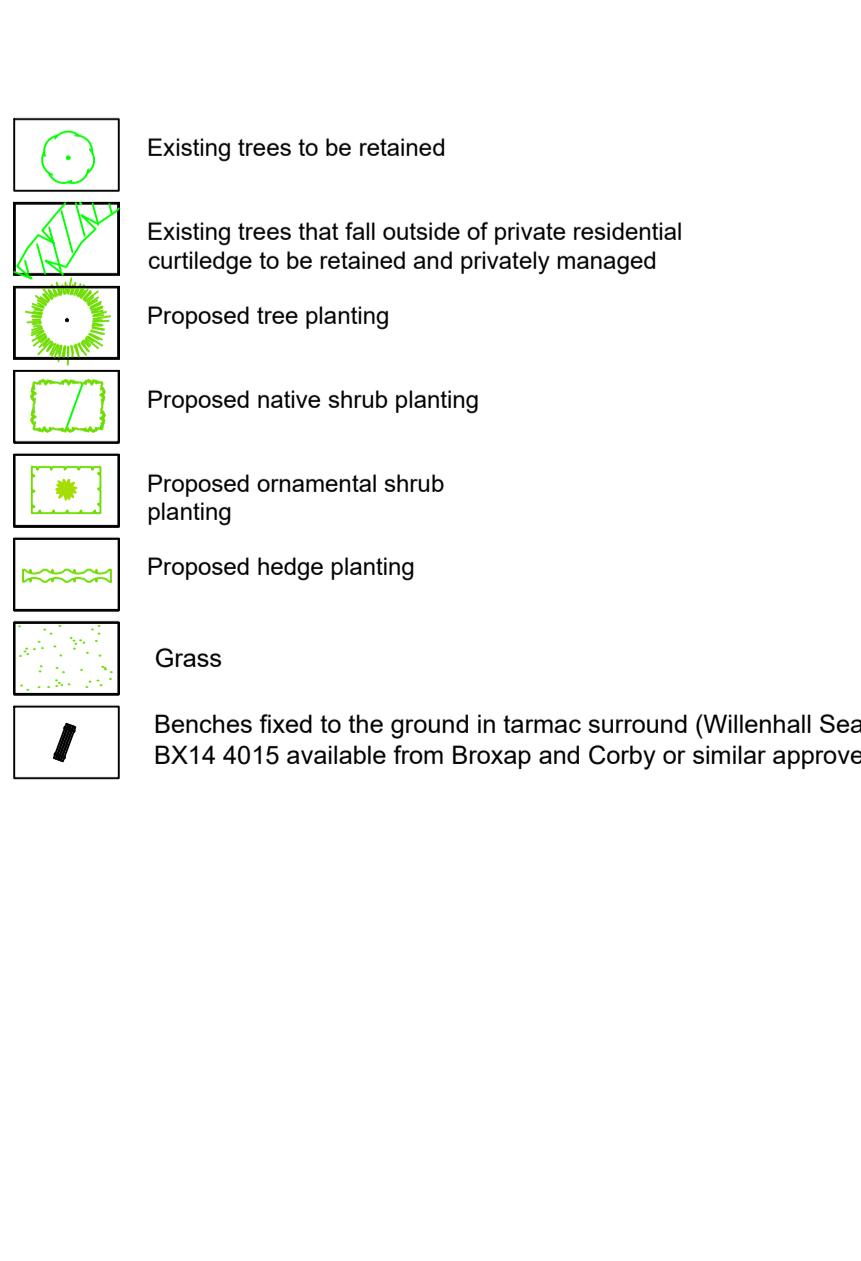
**Spreading topsoil**  
 Topsoil shall be spread before any other works, and shall be spread in a minimum of 100mm, compacted or organic material with any one dimension greater than 100mm. All imported fill material shall be approved by the Landscape Architect prior to spreading on site. The soil shall be free of weeds, roots or perennial weeds, pests, disease, debris, tree roots, sticks, subsoil and foreign matter and shall be capable of being broken down to a fine fib.

**Planting**  
**Cultivation**  
 Planting areas shall be cultivated to a depth of 225mm in the original ground, or where the ground is compacted, ripped and cultivated. Pick of stones, bricks, timber and all other debris arising which have any dimension greater than 50mm and remove it as a top. Do not cultivate across any drain where the stone is flush with the ground surface.

**Soil improvers**  
 When specified concrete, fertiliser or other additives shall be incorporated into soil. Spread material concrete or similar shall be spread to the specified thickness and incorporated, by rodding, into the top 150mm. Fertiliser, organic or inorganic, shall be added to the soil as specified.

**Rejection of plants**  
 All plant material should comply with the minimum requirements in BS 3093:1992 Specification for trees and shrubs and BS 3094:2007 Specification for trees, any plant material, which in the opinion of the Landscape Architect, does not meet the requirements of the Specification, or is unsuitable, or defective in any other way, will be rejected. The minimum specified sizes of the plant stock will be strictly enforced. The contractor shall be responsible for the rejection of any plant material.

**Planting**  
 All plant material shall be planted between November and March in open soil. Planting shall not take place in frosty, frozen or waterlogged conditions. Where approved, container grown plants may be planted in the ground during the winter months, but all plants shall be planted in the ground during the winter months. Planting shall be carried out in accordance with the following instructions:  
 - Planting of trees, shrubs and plants: The contractor shall be responsible for the rejection of any plant material. The minimum specified sizes of the plant stock will be strictly enforced. The contractor shall be responsible for the rejection of any plant material.  
 - Planting of trees, shrubs and plants: The contractor shall be responsible for the rejection of any plant material. The minimum specified sizes of the plant stock will be strictly enforced. The contractor shall be responsible for the rejection of any plant material.  
 - Planting of trees, shrubs and plants: The contractor shall be responsible for the rejection of any plant material. The minimum specified sizes of the plant stock will be strictly enforced. The contractor shall be responsible for the rejection of any plant material.



Abbreviation	Species	Height	Girth	Specification	Pot Size	Number of Plants
AC	Acer capillipes	350-425cm	12-14cm	Heavy Standard	3x B	3-
ACE	Acer campestre	350-425cm	12-14cm	Heavy Standard	3x B	8-
ACST	Acer campestre 'Steel Wire'	350-425cm	12-14cm	Heavy Standard	3x B	2-
BJ	Betula utilis 'Jacqueline'	350-425cm	12-14cm	Heavy Standard	3x RB	10-
BP	Betula pendula	350-425cm	12-14cm	Heavy Standard	3x RB	30-
CB	Carpinus betulus	350-425cm	12-14cm	Heavy Standard	3x B	16-
MS	Malus sylvestris	350-425cm	12-14cm	Heavy Standard	3x B	5-
MT	Malus tschonoskii	350-425cm	12-14cm	Heavy Standard	3x B	3-
PR	Prunus avium	350-425cm	12-14cm	Heavy Standard	3x B	5-
PCC	Prunus caryanifera 'Chanticleer'	300-350cm	12-14cm	Heavy Standard	3x B	4-
SAR	Sorbus aria	350-425cm	12-14cm	Heavy Standard	3x B	3-
PP	Prunus padus	350-425cm	12-14cm	Heavy Standard	3x B	5-
SA	Sorbus aucuparia	350-425cm	12-14cm	Heavy Standard	3x B	15-
SAR	Sorbus aria	350-425cm	12-14cm	Heavy Standard	3x B	13-
SAS	Sorbus aucup. 'Sheerwater Seedling'	350-425cm	12-14cm	Heavy Standard	3x B	9-
SUR	Sorbus 'Joseph Rock'	350-425cm	12-14cm	Heavy Standard	3x B	3-
TC	Tilia cordata	350-425cm	12-14cm	Heavy Standard	3x B	18-
Te	Tilia euchlora	350-425cm	12-14cm	Heavy Standard	3x B	2-
Total: 155 -						

Abbreviation	Species	Specification	Height	Girth	Pot Size	Density	Number of Plants
JVS	Juniperus virginiana 'Skyrocket'	7.5L	80-100cm	Counted	11-	-	148-
PF	Phormium tenax 'Forest Flame'	Double Crown	7.5L	Counted	6-	-	221-
PTV	Phormium tenax 'Variegatum'	Double Crown	7.5L	Counted	6-	-	148-
PYW	Phormium 'Yellow Wave'	Double Crown	7.5L	Counted	16-	-	38-
Total: 47 -							

Abbreviation	Species	Specification	Height	Girth	Pot Size	Density	Number of Plants
CM	Crataegus monogyna	Transplant	60-80cm	B	1m <sup>2</sup>	10%	75-
CORAV	Corylus avellana	Transplant	60-80cm	B	1m <sup>2</sup>	20%	148-
ILEA	Ilex aquifolium	Transplant	60-80cm	B	1m <sup>2</sup>	30%	221-
PRUSP	Prunus spinosa	Transplant	60-80cm	B	1m <sup>2</sup>	20%	148-
ROSAR	Rosa arvensis	Transplant	60-80cm	B	1m <sup>2</sup>	5%	38-
ROSCA	Rosa canina	Transplant	60-80cm	B	1m <sup>2</sup>	5%	38-
VIBOP	Viburnum opulus	Transplant	60-80cm	B	1m <sup>2</sup>	10%	75-
Total: 743 -							

Abbreviation	Species	Specification	Height	Girth	Pot Size	Density	Number of Plants
AVJ	Aucuba japonica 'Variegata'	40-60cm	5L	4m <sup>2</sup>	96-	-	96-
BCO	Berberis cordifolia	20-30cm	3L	6m <sup>2</sup>	234-	-	234-
CAB	Ceanothus Autumnal Blue'	40-60cm	3L	6m <sup>2</sup>	16-	-	16-
CET	Ceanothus thyrsiflorus repens	20-30cm	3L	6m <sup>2</sup>	132-	-	132-
CTS	Chiosya ternata Sundance @	30-40cm	3L	6m <sup>2</sup>	8-	-	8-
EAB	Escallonia Agyle Blossom'	40-60cm	3L	6m <sup>2</sup>	111-	-	111-
EDS	Escallonia 'Donard Seedling'	40-60cm	3L	4m <sup>2</sup>	64-	-	64-
EEL	Elaeagnus x ebbingii 'Limeglow'	40-60cm	3L	4m <sup>2</sup>	22-	-	22-
EJA	Euonymus japonicus 'Ovatus Aureus'	30-40cm	3L	6m <sup>2</sup>	46-	-	46-
EUEG	Euonymus fortunei 'Emerald Gaiety'	20-30cm	3L	6m <sup>2</sup>	42-	-	42-
HEP	Hebe pinguifolia 'Page'	30-40cm	3L	6m <sup>2</sup>	77-	-	77-
HMT	Hypericum x roseianum 'Tricolor'	30-40cm	3L	6m <sup>2</sup>	10-	-	10-
HNB	Hebe 'Mrs Winder'	30-40cm	3L	6m <sup>2</sup>	237-	-	237-
LAV	Lavandula angustifolia 'Vera'	30-40cm	3L	6m <sup>2</sup>	75-	-	75-
LNB	Loniceria nitida 'Baegens's Gold'	40-60cm	3L	4m <sup>2</sup>	69-	-	69-
PE	Potentilla fruticosa 'Elizabeth'	30-40cm	3L	6m <sup>2</sup>	90-	-	90-
PKD	Potentilla fruticosa 'Katherine Dykes'	30-40cm	3L	6m <sup>2</sup>	112-	-	112-
PR	Potentilla fruticosa 'Red Ace'	30-40cm	3L	6m <sup>2</sup>	59-	-	59-
SR	Skimmia japonica 'Rubella'	30-40cm	3L	6m <sup>2</sup>	107-	-	107-
SS	Senecio 'Sunshine'	30-40cm	3L	6m <sup>2</sup>	8-	-	8-
VD	Viburnum davidii	30-40cm	3L	6m <sup>2</sup>	28-	-	28-
VTE	Viburnum tinus 'Eve Price'	40-60cm	3L	4m <sup>2</sup>	69-	-	69-
Total: 1512 -							

Abbreviation	Species	Specification	Height	Girth	Pot Size	Density	Mix Species Contribution	Number of Plants
CM	Crataegus monogyna	Transplant	60-80cm	B	1m <sup>2</sup>	10%	-	75-
CORAV	Corylus avellana	Transplant	60-80cm	B	1m <sup>2</sup>	20%	-	148-
ILEA	Ilex aquifolium	Transplant	60-80cm	B	1m <sup>2</sup>	30%	-	221-
PRUSP	Prunus spinosa	Transplant	60-80cm	B	1m <sup>2</sup>	20%	-	148-
ROSAR	Rosa arvensis	Transplant	60-80cm	B	1m <sup>2</sup>	5%	-	38-
ROSCA	Rosa canina	Transplant	60-80cm	B	1m <sup>2</sup>	5%	-	38-
VIBOP	Viburnum opulus	Transplant	60-80cm	B	1m <sup>2</sup>	10%	-	75-
Total: 743 -								

Amends to latest layout  
 clients comments  
 Amends to latest layout  
 clients comments

Aug 20  
 Sept 19

B BH  
 A JW

Revision  
 Date  
 Rev  
 Date

Landscaping  
 Trevor Bridge Associates Ltd  
 14000  
 Stamford Street  
 Lanes OLE 7FW  
 Tel: 0161-9042099  
 E-mail: info@trevorbridge.co.uk

Project  
 FIELDSHIRE WAY, BACUP

MCDERMOTT HOMES LIMITED

LANDSCAPING PROPOSALS  
 SHEET 1 OF 2

Date  
 April 19  
 Scale(s)  
 1:250  
 Dwg no  
 5944.01  
 Rev  
 B



DOUGLAS ROAD BACUP (FULL SITE)

	SQFT	no. beds	NUMBER	ACT. MIX	SQFT
MAIDSTONE	1232	4	5	7.04%	6160
APPLEBURY	1141	4	20	28.17%	22820
GRASMOOR	1297	4	14	19.72%	18158
OAKHURST	900	3	18	25.35%	16200
WELLAND	855	3	10	14.08%	8550
ASHDOWN	966	3	4	5.63%	3864

71 100.00% 75752

GROSS SITE AREA	7.72 ACRES
POS / LANDSCAPE BUFFER	1.24 ACRES
UNDEVELOPABLE	0.34 ACRES
NETT SITE AREA	6.14 ACRES
	12337 SQFT/ACRE



Rev	Date	Revised
H	06.08.20	Plot 24 amended to Welland
Rev	Date	Revised

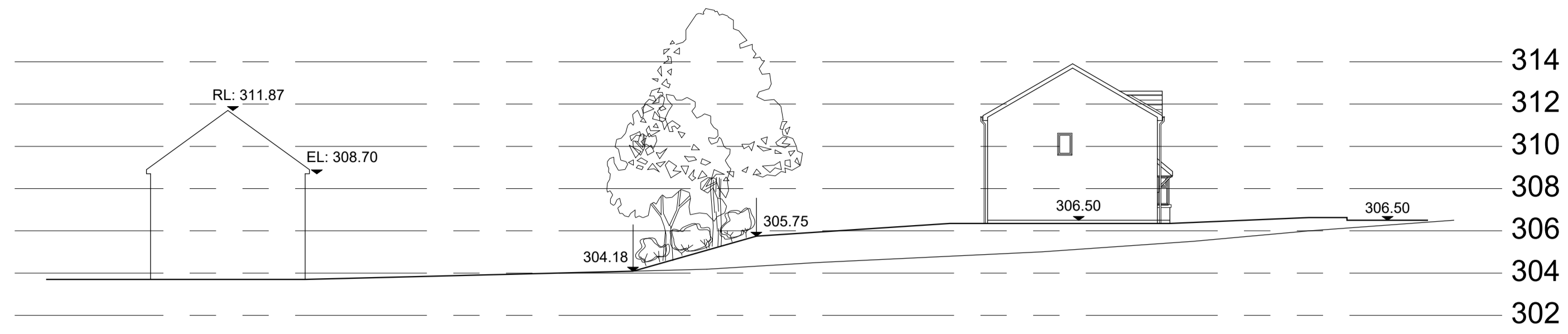
G	15.11.19	Woodland access notes added
F	10.10.19	House type substitution - Garth replaced with Grasmoor
E	09.10.19	House type substitution - Chatham replaced with Applebury
D	13.09.19	Blue edge added
C	02.08.19	Footpath increased to 2m. Plots 3-5, 9-12, 18, 19, 32, 42, 44, 56 & 69-71 moved to accommodate.
B	21.07.19	Revised to highway comments.
A	02.04.19	Additional SW outfall shown between plots 7&8
Rev	Date	Revised

Scale 1:500 @ A1  
 Date Dec 18  
 Dwg No  
**WA-SL.01 H**

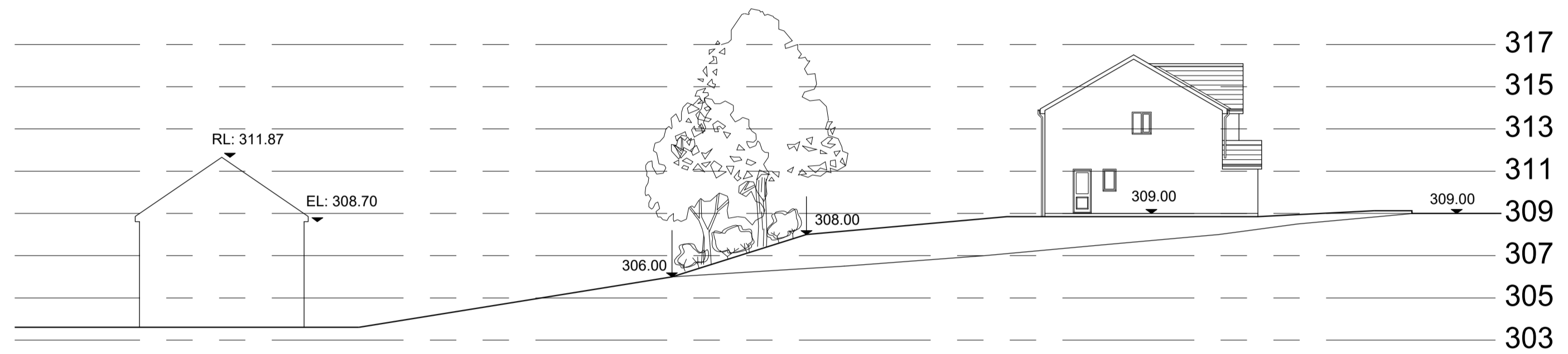
**SITE LAYOUT**

Project  
**FIELDFARE WAY  
 BACUP**

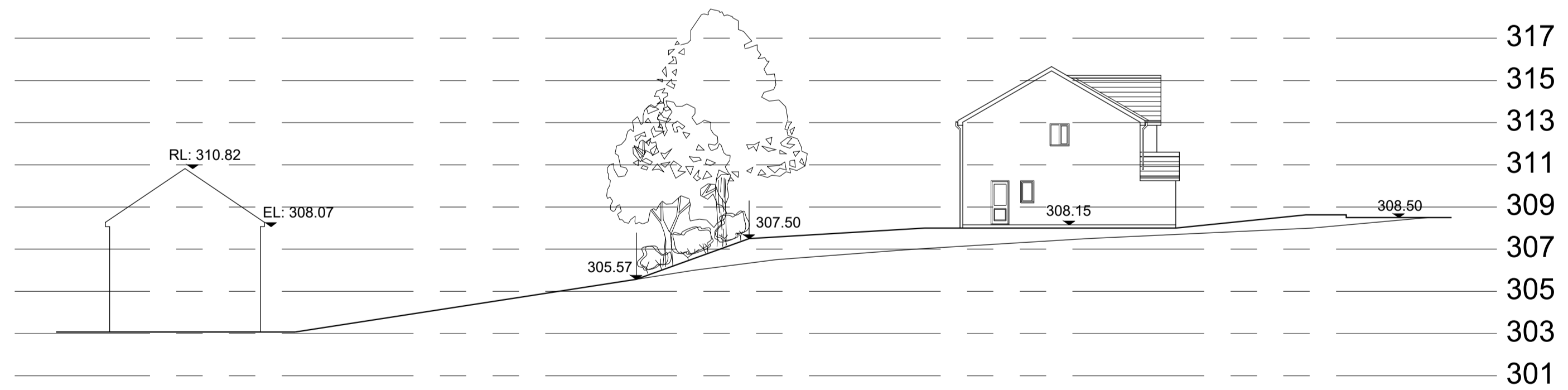
**McDermott  
 HOMES**  
 Jupiter House, 1 Mercury Rise, Altham, Lancs BB5 5BY  
 Tel: 01282 774586 Fax: 01282 774616  
 E: info@mcdermothomes.co.uk  
 www.mcdermothomes.co.uk



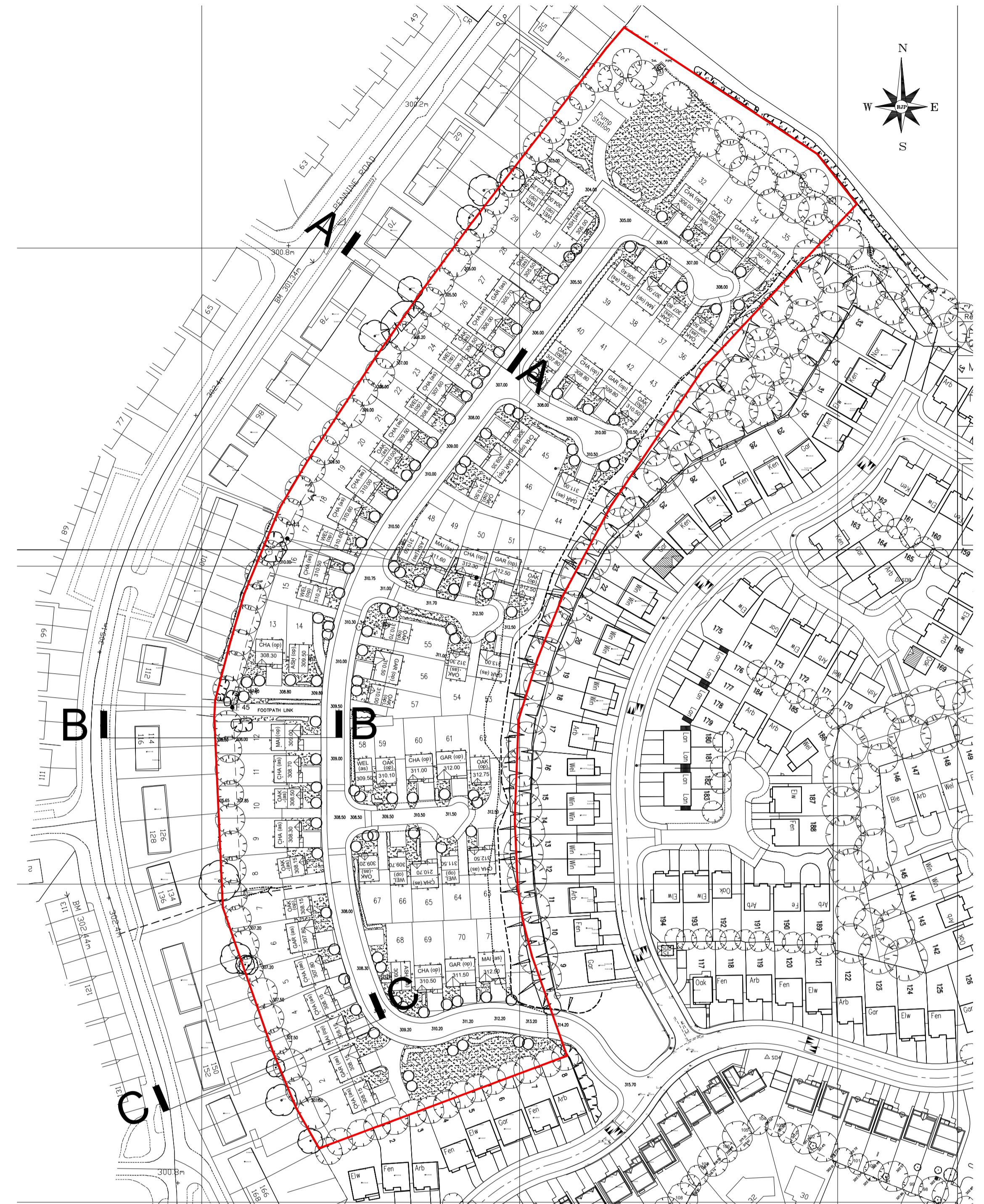
SECTION A-A



SECTION B-B



SECTION C-C



SITE PLAN 1:1000

Rev	Date	Revision
-	-	-

Scale	1:200
Date	April 2019
Dwg No	SS-01

Title	SITE SECTIONS
-------	---------------

Project	FIELDFARE WAY BACUP
---------	---------------------


  
**McDermott**
  
 HOMES
   
Jupiter House, 1 Mercury Rise, Altham, Lancs, BBS 5BY.
  
Tel: 01282 774596 Fax: 01282 774616
  
E: info@mcdermothomes.co.uk
  
www.mcdermothomes.co.uk

general notes:  
do not scale the drawing.  
all dimensions to be checked on site prior to commencement of work and any discrepancy shall be immediately reported and resolved prior to work commencing.  
this drawing is to be read in conjunction with all relevant drawings and specifications relating to the job whether or not indicated on the drawing.  
copyright reserved to mck associates ltd. and this drawing may not be used or reproduced without prior written consent.



STREETSCE A  
PLOT 1 PLOT 2 PLOT 3 PLOT 4 PLOT 5 PLOT 6 PLOT 7 PLOT 8 PLOT 9 PLOT 10 PLOT 11 PLOT 12 PLOT 14 PLOT 15 PLOT 16 PLOT 17 PLOT 18 PLOT 19



STREETSCE A CONTINUED  
PLOT 19 PLOT 20 PLOT 21 PLOT 22 PLOT 23 PLOT 24 PLOT 25 PLOT 26 PLOT 27 PLOT 28 PLOT 31



STREETSCE B  
PLOT 40 PLOT 41 PLOT 42 PLOT 43 PLOT 26 - ELW



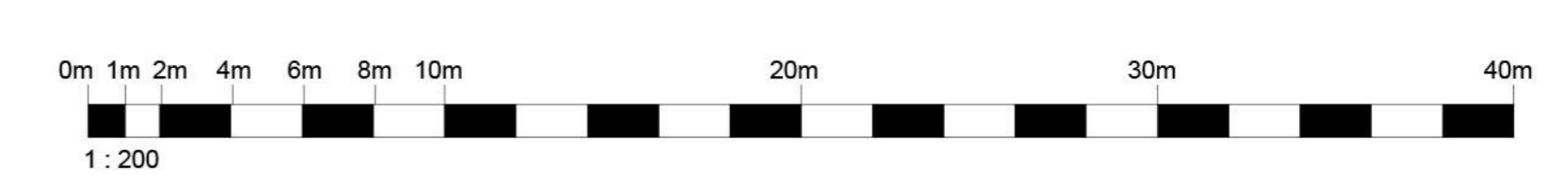
STREETSCE C  
PLOT 68 PLOT 69 PLOT 70 PLOT 71 PLOT 9 - GAR



STREETSCE D  
PLOT 48 PLOT 55 PLOT 56 PLOT 57 PLOT 58



STREETSCE / SECTION LOCATIONS



A 14.10.20 W.L. Chatham changed to Applebury.  
Garth changed to Grasmere

Client: MCDERMOTT HOMES

**mck associates limited**  
architecture • building surveying • urban design  
barnaby villa • 48 welling street road • fullwood • preston • nr2 8pg  
tel: 01772 774510 fax: 01772 774511 email: mck@mckassociates.co.uk

FIELDFARE WAY  
BACUP

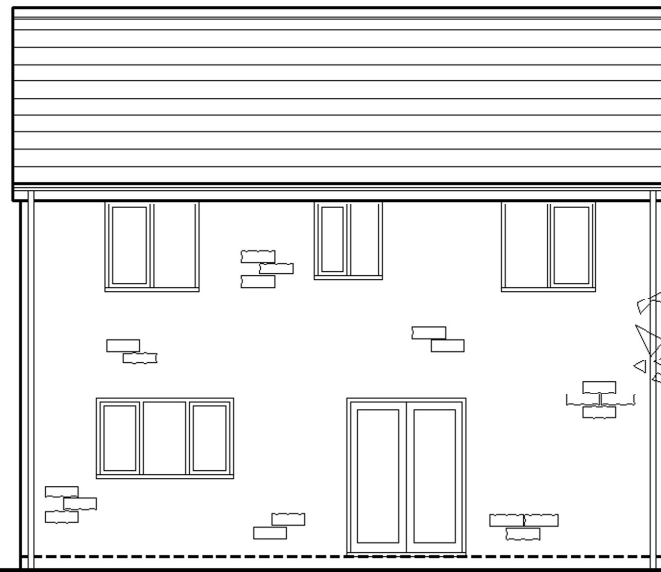
Drawing Title: STREETSCE / SECTION LOCATIONS

Drawn: MCK	Checked: JAK	Scale: 1:200	Date: APR 19
Job No: 19-038	Drawing No: SS01	Rev: A	

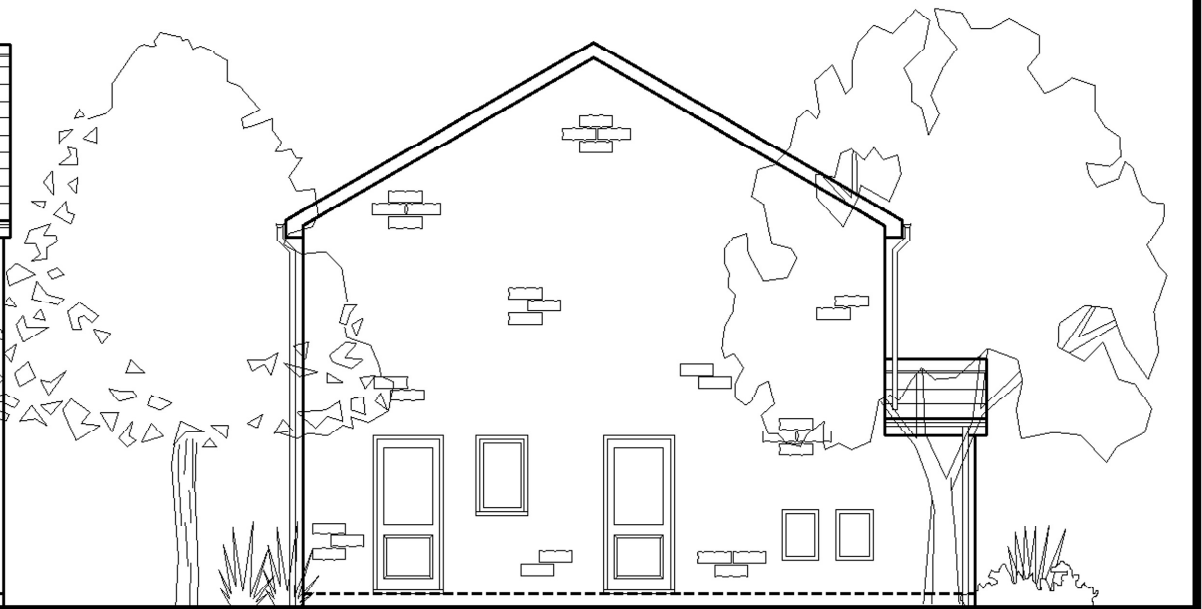




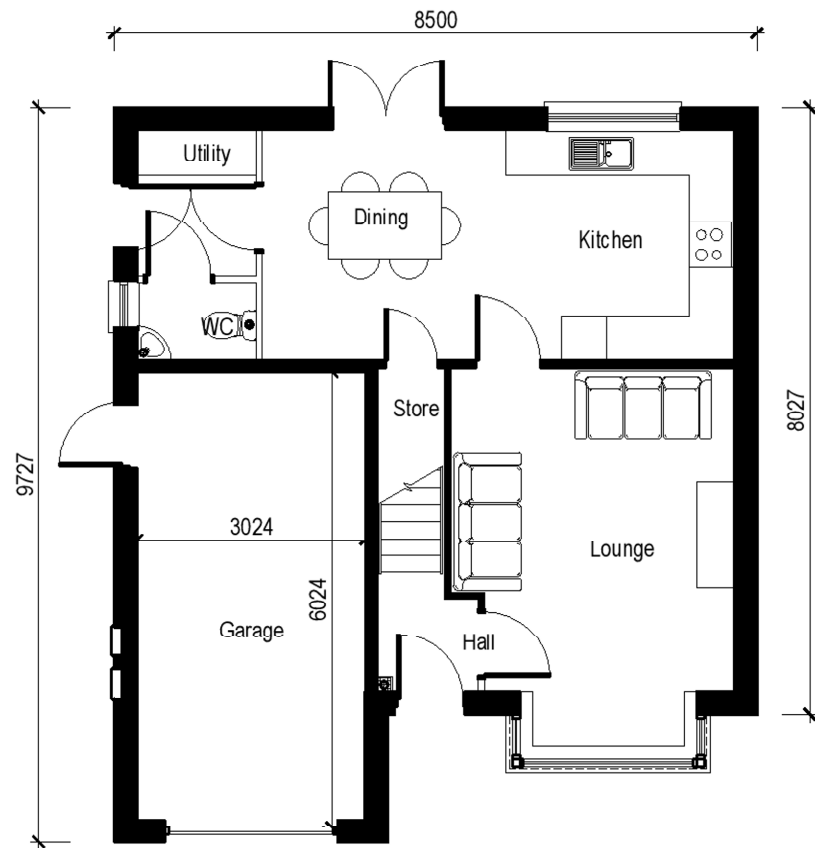
Front Elevation



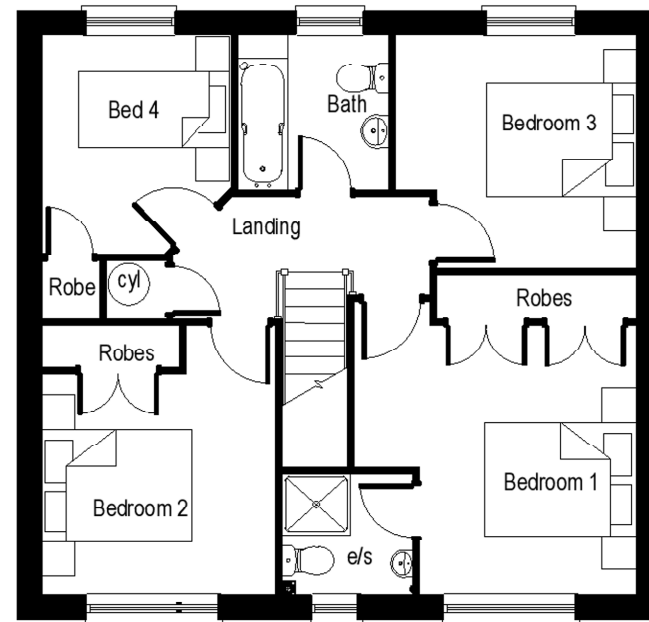
Rear Elevation



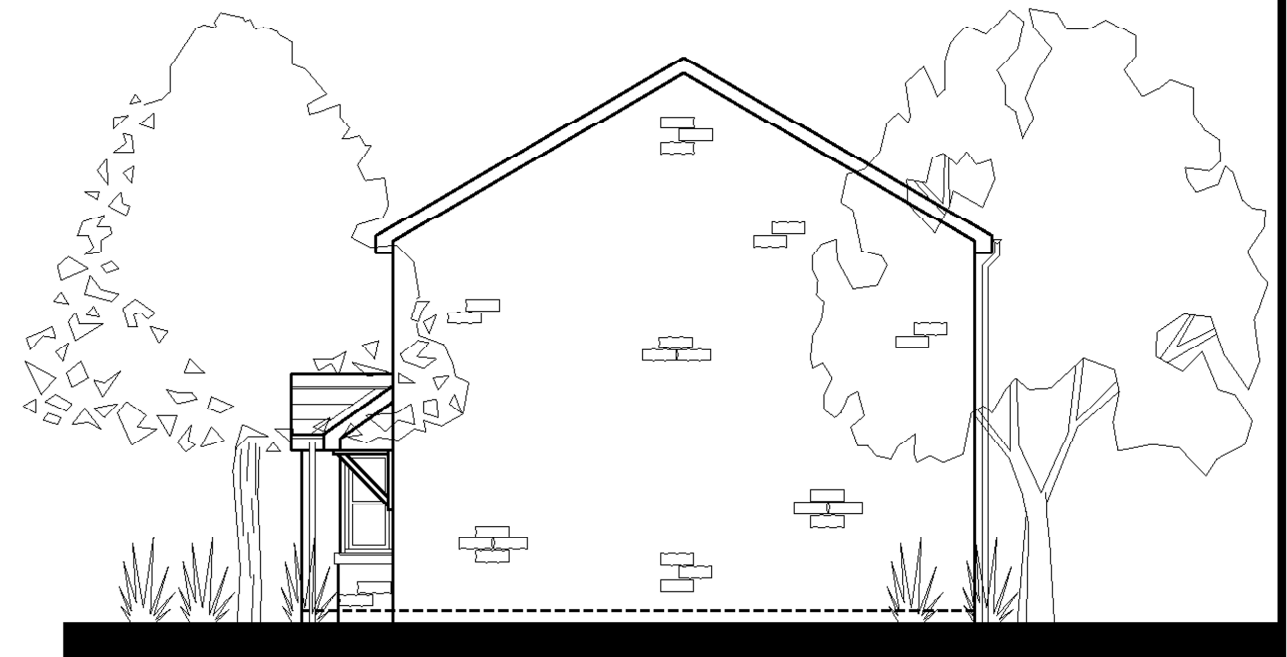
Side Elevation



Ground Floor Plan



First Floor Plan



Side Elevation



Jupiter House, 1 Mercury Rise, Altham, Lancs, BB5 5BY  
 T. 01282 774586 F. 01282 774616  
 E. info@mcdermotthomes.co.uk www.mcdermotthomes.co.uk

# The Applebury

( 1098ft<sup>2</sup> / 102.0m<sup>2</sup> )

Scale	<b>1:100</b>
Date	<b>October 2019</b>
Dwg. No.	<b>APP 1.7</b>