



# Local Development Scheme

**2004 - 2007**

**Forward Planning  
Rossendale Borough Council**

**June 2005**

## **Contents**

### **Diagrams & Tables**

### **Glossary of Terms**

## **Section 1: Local Development Scheme**

- 1.1 Introduction and Background**
- 1.2 Definitions**
- 1.3 Programme of LDF Preparation**

## **Section 2: Local Development Document & Development Plan Document Profiles**

- 2.1 Statement of Community Involvement**
- 2.2 Core Strategy**
- 2.3 Allocations DPD**
- 2.4 Proposals Map**
- 2.5 Bacup/Stacksteads Area Action Plan**
- 2.6 Rawtenstall Town Centre Area Action Plan**
- 2.7 Development Control Policies**
- 2.8 Sustainability Appraisal (SA) Profile**

## **Section 3: Supporting Statement**

- 3.1 Structure of the LDF**
- 3.2 Consultation**
- 3.3 Evidence Base**
- 3.4 Monitoring and Review**
- 3.5 2008 and Beyond**
- 3.6 Risk Assessment**
- 3.7 Resources**
- 3.8 Incorporation of Existing Policies**
- 3.9 Conclusion**



## **Diagrams and Tables**

- Diagram 1: Local Development Scheme Timetable for Local Development Framework Preparation**
- Diagram 2: Local Development Scheme Relationships**
- Diagram 3: Local Development Scheme**
- Table 1: Schedule of proposed LDDs**
- Table 2: The Evidence Base**
- Table 3: Identification of Areas of Risk**
- Table 4: Resources**
- Table 5: Saved Policies**
- Table 6: Deleted Policies**

## **Glossary of Terms**

<b>PPS</b>	<b>Planning Policy Statements</b>
<b>RSS</b>	<b>Regional Spatial Strategy</b>
<b>LDF</b>	<b>Local Development Framework</b>
<b>LDD</b>	<b>Local Development Documents</b>
<b>DPD</b>	<b>Development Plan Documents</b>
<b>AAP</b>	<b>Area Action Plans</b>
<b>SPD</b>	<b>Supplementary Planning Documents</b>
<b>SCI</b>	<b>Statement of Community Involvement</b>
<b>LDS</b>	<b>Local Development Scheme</b>
<b>SA</b>	<b>Sustainability Appraisal</b>
<b>SEA</b>	<b>Strategic Environmental Assessment</b>

## Section 1: Introduction & Background

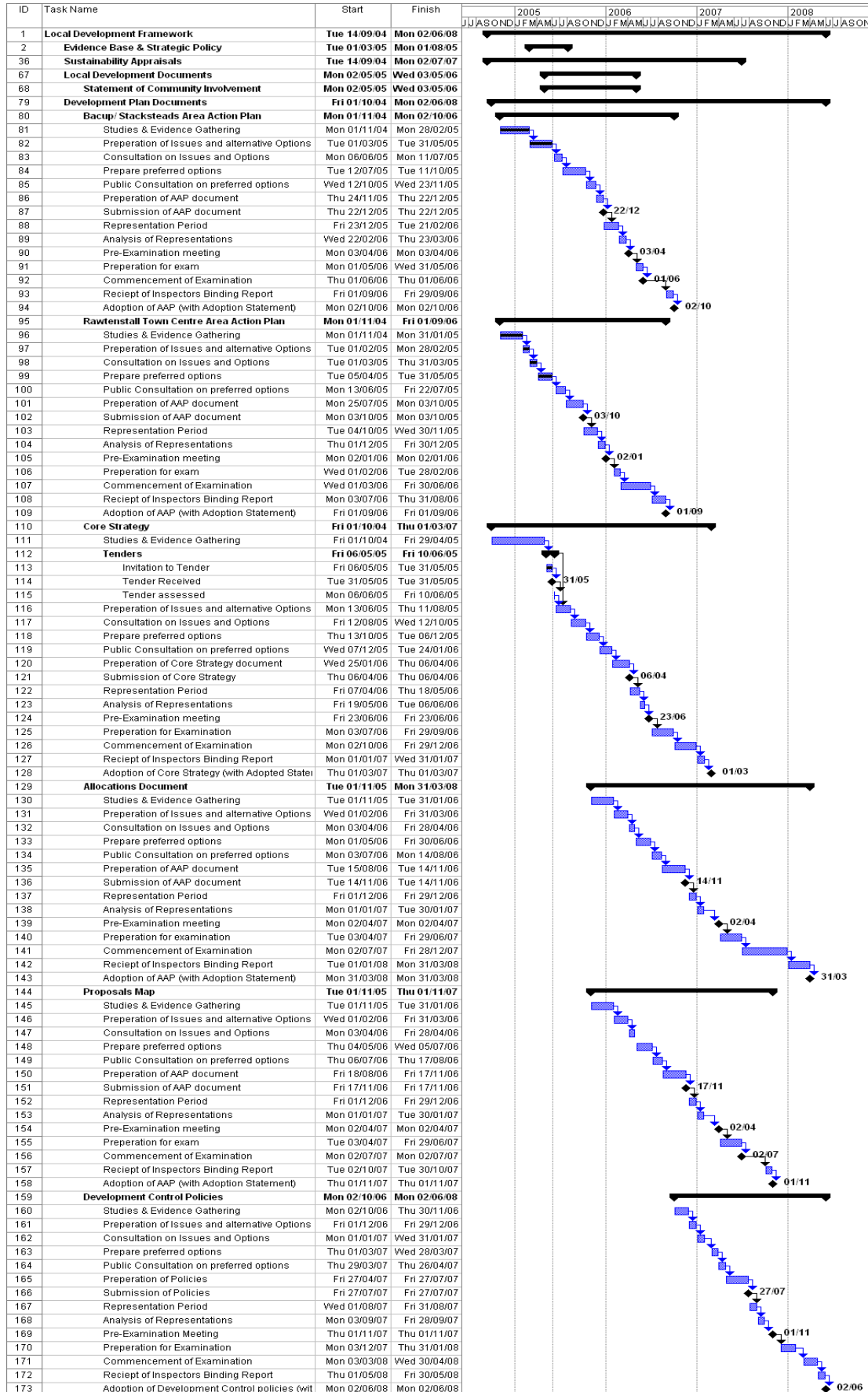
### 1.1 Introduction

- 1.1.1 This Local Development Scheme is intended to provide a three year project plan for the preparation of a Local Development Framework for Rossendale, setting out the documents that will be prepared over the next three years. The Local Development Scheme (LDS) includes a timetable to explain the key stages when the Local Development Documents (LDD) will be prepared and will then make up the Local Development Framework.

### 1.2 Background

- 1.2.1 The Government, through the Planning and Compulsory Purchase Act, which came into force in September 2004, has introduced a major reform of the development plans system. This has involved the abolition of Structure Plans and Local Plans in shire areas, and Unitary Development Plans within metropolitan authorities. These plans will be replaced by a new Local Development Framework (LDF). Regional Planning Guidance has also been replaced with a statutory Regional Spatial Strategy which, together with the Rossendale Local Development Framework, will form the development plan for the Borough.
- 1.2.2 The new planning system aims to move towards preparing spatial plans, which will integrate strategies produced by local authorities and other agencies with land use planning. In particular, the Local Development Framework for Rossendale will form the spatial expression of the Local Strategic Partnership's Community Strategy. The LDF will include a wider range of policies than has been contained in previous development plans, helping to deliver the land-use elements of other strategies relevant to Rossendale, in particular, the Local Strategic Partnership's Community Strategy, known as *Rossendale Alive*.
- 1.2.3 The new legislation requires every local planning authority to prepare a Local Development Scheme for approval by the relevant Government Office. This sets out the various documents that will be produced as part of the LDF and provides a time frame for the key stages of preparation, consultation, examination and adoption of these documents.

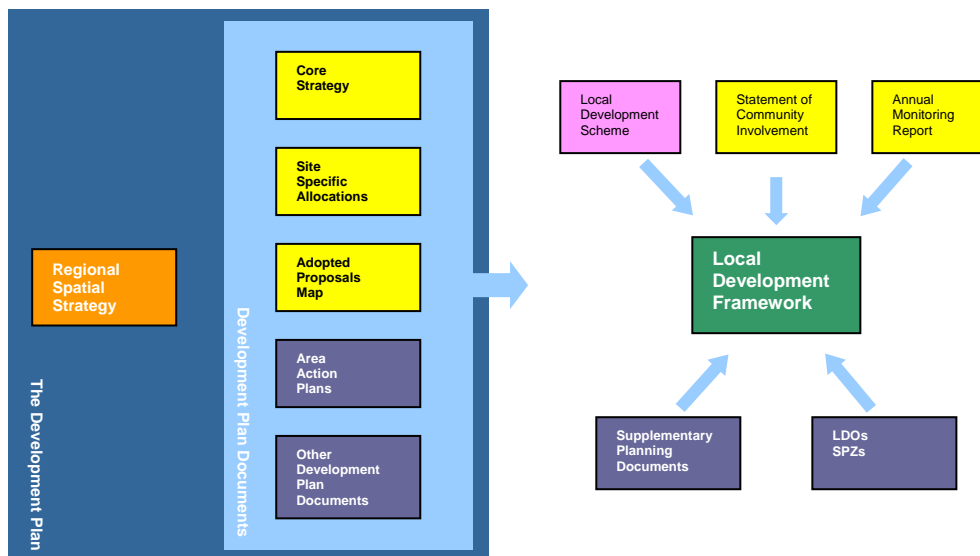
Diagram 1: Local Development Scheme



## 1.2 Definitions

- 1.2.1 **Planning Policy Statements (PPS):** These policy documents are prepared at the national level, and provide guidance to assist in the preparation of the Regional Spatial Strategy and the various documents that will form the Local Development Framework. Over time they replace the current Planning Policy Guidance Notes (PPGs).
- 1.2.2 **Regional Spatial Strategy (RSS):** This has replaced Regional Planning Guidance and is now a statutory document. It will take account of guidance from the PPSs and PPGs. All documents prepared at the local level must take full account of the policies in the Regional Spatial Strategy. There is also scope to prepare sub-regional strategies.
- 1.2.3 **Local Development Framework (LDF):** Is a portfolio of planning documents prepared at the local level, which will replace the adopted Rossendale District Local Plan and the Joint Lancashire Structure Plan. The LDF will consist of both statutory and non-statutory planning documents, which are called Local Development Documents (LDD).
- 1.2.4 **Local Development Documents (LDD):** These are the planning policy documents, prepared at the local level, which will form the Local Development Framework for Rossendale. Types of LDD will include the Statement of Community Involvement, the Core Strategy (including Key Policies), a Proposals Map, an Allocations DPD and generic Development Control policies. Other types of LDDs that will be prepared include Area Action Plans and Supplementary Planning Documents. Local Planning Authorities may choose to work with adjoining authorities to prepare some LDDs.
- 1.2.5 **Development Plan Documents (DPD):** These are statutory Local Development Documents, which will be prepared at the local level. Examples of DPDs include the Core Strategy, a document setting out site specific allocations, the Proposals Map and Area Action Plans. Topic based DPDs can also be prepared to address specific issues.
- 1.2.6 **Area Action Plans (AAP):** Are specific types of DPD which will set out the planning framework for specific parts of the Borough where significant change or conservation is required, and will focus on implementation. AAPs will identify the distribution of uses, including specific site allocations, and will set out the timetable for implementing the proposals.
- 1.2.7 **Supplementary Planning Documents (SPD):** These are non-statutory Local Development Documents. They will be prepared to supplement statutory Development Plan Documents (DPD) and will be similar to the existing Supplementary Planning Guidance.
- 1.2.8 **Statement of Community Involvement (SCI):** This will be an LDD within the Local Development Framework. The SCI will set out how Rossendale Borough Council will involve the public and relevant stakeholders in the preparation of the LDF. It will specify the type and timing of participation expected for each Development Plan Document. The SCI will also set out how the Council will consult on planning applications and deal with pre-application discussions.
- 1.2.9 **Local Development Scheme (LDS):** This document will explain how the local planning authority will develop its LDF and will include a timetable/ plan of key stages. The LDS will be updated each year.
- 1.2.10 **Sustainability Appraisal (SA):** This will be undertaken to assess environmental, social and economic sustainability of the policies (including alternatives) of the various DPDs and SPDs. The SA will take full account of the EU Directive on Strategic Environmental Assessment.
- 1.2.11 **Strategic Environmental Assessment (SEA):** This is a requirement under the European Directive and, combined with a full sustainability appraisal, will help improve policies to ensure they reflect sustainable development principles, in particular, environmental sustainability.

**Diagram 2: Local Development Scheme Relationships**



### 1.3 Programme of LDF preparation

- 1.3.1 The current Rossendale Local Plan was adopted in April 1995 and covered the period 1990 to 2001. It is, therefore, imperative that a complete spatial plan for Rossendale is developed quickly over the next few years to ensure that the Borough has up-to-date plan coverage. Work on the LDF for Rossendale is currently on-going in terms of preparing the evidence base for the Core Strategy and consultation on the issues and options for the identified Area Action Plans has commenced. This is in parallel with developing the earliest stages of the Sustainability Appraisal process.
- 1.3.2 The programme for the LDF, as set out in this document, proposes to ensure the early preparation of the Core Strategy, together with Area Action Plans for the Borough's key regeneration priorities, namely the Housing Market Re-structuring Pathfinder area in Bacup and Stacksteads, and also the redevelopment of Rawtenstall Town Centre. Other Development Plan Documents (DPDs) that will be prepared within the timeframe set out in this Local Development Scheme include an Allocations DPD and the Proposals Map, as well as a DPD to address Development Control Policies.
- 1.3.3 It is envisaged that SPDs will be identified for preparation within the first Annual Monitoring Report, which is intended to provide an update on DPD preparation and set out timescales for the following three rolling year period. Additional SPDs are likely to be prepared covering design issues and planning obligations. A DPD is also likely to be produced in the next rolling period which will consider conservation area issues.
- 1.3.4 Table 1 describes the LDDs that will be prepared as part of the Local Development Framework. It also indicates the timetable proposed for the preparation of the LDF for Rossendale.
- 1.3.5 This timetable is also illustrated on a Gantt Chart, shown at the beginning of this document. The chart includes key milestones for the production of each LDD. It also illustrates periods of community and stakeholder engagement.



**Table 1: Schedule of proposed LDDs**

Document Title	Status	Brief description	Chain of Conformity	Date for Issues Consultation (Reg 25)	Date for preferred options public participation (Reg 26)	Date for submission to SoS (Reg 28)	Date for Pre-Examination meeting	Proposed date for adoption
Statement of Community Involvement	LDD	Document sets out the approach and standards to be applied to involving the local community and other stakeholders in the LDF preparation and in planning applications.	N/A	N/A	Sept - Oct 2005	December 2005	January 2006	April 2006
Core Strategy	DPD	Sets out the strategic vision, objectives, aims and strategy for the LDF.	General conformity with the RSS and PPSs. Will conform to all Council strategies, including the Community Strategy and AAPs.	Aug - Oct 2005	Dec 2005 – Jan 2006	April 2006	June 2006	March 2007
Sustainability Appraisal - Core Strategy	Non – LDD	Identifies the social, economic and environmental impacts of the Core Strategy	SEA EU Directive and ODPM guidelines.	Appraisal of the issues and alternative options – Oct 2005	Appraisal of the preferred option – Dec 2005	SA Document - March 2006	N/A	N/A
Allocations	DPD	Sets out the site specific proposals for the district.	Conform to Core Strategy, AAPs.	April 2006	July - August 2006	November 2006	April 2007	March 2008
Sustainability Appraisal – Allocations	Non – LDD	Identifies social, economic and environmental impacts of the Allocations DPD.	SEA EU Directive and ODPM guidelines.	Appraisal of the Issues and alternative Options – March 2006	Appraisal of the preferred Option – June 2006	SA Document – November 2006	N/A	N/A

Document Title	Status	Brief description	Chain of Conformity	Date for Issues Consultation (Reg 25)	Date for preferred options public participation (Reg 26)	Date for submission to SoS (Reg 28)	Date for Pre-Examination meeting	Proposed date for adoption
Proposals Map	DPD	Identifies the site specific proposals for the district.	Conform to Core Strategy and Allocations DPD.	April 2006	July - August 2006	November 2006	April 2007	November 2007
Sustainability Appraisal – Proposals Map	Non – LDD	Identifies the social, economic and environmental impacts of the Proposals Map.	SEA EU Directive and ODPM guidelines.	Appraisal of the Issues and alternative Options – April 2006	Appraisal of the preferred Option – June 2006	SA Document – November 2006	N/A	N/A
Bacup / Stacksteads Area Action Plan (Masterplan)	DPD	Area Action Plan detailing specific land uses, areas for change and detailed policy for the Bacup / Stacksteads HMR Pathfinder area.	Conform to RSS, Joint Lancashire Structure Plan, Core Strategy, and Bacup / Stacksteads ADF (ELEVATE)	June – July 2005	October – November 2005	December 2005	April 2006	October 2006
Sustainability Appraisal – Bacup / Stacksteads Area Action Plan	Non – LDD	Identifies the social, economic and environmental effects of the Area Action Plan.	SEA EU Directive and ODPM guidelines.	Appraisal of Issues and Options – May 2005	Appraisal of Preferred Options – September 2005	SA Document – November 2005	N/A	N/A
Rawtenstall Town Centre Area Action Plan (Masterplan)	DPD	Area Action Plan detailing specific land uses, areas for change and detailed policy for Rawtenstall Town Centre.	Conform to RSS, Joint Lancashire Structure Plan, Core Strategy and Proposals Map	March 2005	June - July 2005	October 2005	January 2006	September 2006
Sustainability Appraisal – Rawtenstall Town Centre Area Action Plan	LDD	Identifies the social, economic and environmental impacts of the Area Action Plan.	SEA EU Directive and ODPM guidelines.	Appraisal of Issues and Options – March 2005	Appraisal of Preferred Options – May 2005	SA Document – September 2005	N/A	N/A

Document Title	Status	Brief description	Chain of Conformity	Date for Issues Consultation (Reg 25)	Date for preferred options public participation (Reg 26)	Date for submission to SoS (Reg 28)	Date for Pre-Examination meeting	Proposed date for adoption
Development Control Policies	DPD	To provide specific guidance on the control of development for Rossendale.	Core Strategy, Allocations DPD and Proposals Map	January 2007	March - April 2007	July 2007	November 2007	June 2008
Sustainability Appraisal – Guide for Development Control Policies	Non LDD	Identifies the social, economic and environmental impacts of this Guidance	SEA EU Directive and ODPM guidelines.	Appraisal of Issues and Options – December 2006	Appraisal of Preferred Options – February 2007	SA Document – July 2007	N/A	N/A

## Section 2: Local Development Document & Development Plan Document Profiles

### 2.1 Statement of Community Involvement

<b>Document Details</b>	<ul style="list-style-type: none"> <li>• Statement of Community Involvement</li> <li>• Sets out the approach and standards to be applied when involving the community and stakeholders in the preparation of the LDF</li> <li>• Borough wide</li> <li>• LDD</li> <li>• All documents in the LDF must conform to this LDD</li> </ul>
<b>Timetable</b>	<ul style="list-style-type: none"> <li>• Consultation – Sept/Oct 2005</li> <li>• Submission to SoS – Dec 2005</li> <li>• Pre-examination meeting – January 2006</li> <li>• Examination period – February 2006</li> <li>• Inspector's binding report – March 2006</li> <li>• Adoption and publication – April 2006</li> </ul>
<b>Arrangements for production</b>	<ul style="list-style-type: none"> <li>• Forward Planning to lead, with significant input from Development Control, Community &amp; Partnerships and involvement of the LSP.</li> <li>• Resources available within department - adequate</li> </ul>

### 2.2 Core Strategy

<b>Document Details</b>	<ul style="list-style-type: none"> <li>• Core Strategy</li> <li>• Informed by Vision, objectives and aims embodied in Community Strategy, including Core Planning Policies.</li> <li>• Borough wide</li> <li>• DPD</li> <li>• All documents in the LDF must conform to this LDD. The Core Strategy will conform to RSS, PPSs and Community Strategy.</li> </ul>
<b>Timetable</b>	<ul style="list-style-type: none"> <li>• Survey and pre-production phase complete July/Aug 2005</li> <li>• Key issues and consultation with specific and general bodies (Reg 25) - Aug /Oct 2005</li> <li>• Public participation on preferred options (Reg 26) Dec 2005 - Jan 2006</li> <li>• Submission to SoS – April 2006</li> <li>• Pre-examination Meeting – June 2006</li> <li>• Examination period – October 2006</li> <li>• Inspector's binding report – January 2006</li> <li>• Adoption and publication – March 2007</li> </ul>
<b>Arrangements for production</b>	<ul style="list-style-type: none"> <li>• Consultants to lead to Preferred Option stage with input from Forward Planning. Forward Planning to prepare submission document and undertake examination / adoption stages</li> <li>• Resources available within department – adequate with consultancy assistance.</li> <li>• Involve stakeholders and the community in line with SCI</li> </ul>

### 2.3 Allocations DPD

<b>Document Details</b>	<ul style="list-style-type: none"> <li>• Allocations</li> <li>• Site specific allocations, including justification.</li> <li>• Borough wide</li> <li>• DPD</li> <li>• Conform to Core Strategy, RSS, PPSs &amp; Community Strategy</li> </ul>
<b>Timetable</b>	<ul style="list-style-type: none"> <li>• Survey and pre-production complete February 2006</li> <li>• Key issues and consultation with specific and general bodies (Reg 25) – April 2006</li> <li>• Public participation on preferred options (Reg 26) – July/ August 2006</li> <li>• Submission to SoS – November 2006</li> <li>• Pre-examination meeting – April 2007</li> <li>• Examination period – July 2007</li> <li>• Inspector's binding report – January 2008</li> <li>• Adoption and publication – March 2008</li> </ul>
<b>Arrangements for production</b>	<ul style="list-style-type: none"> <li>• Forward Planning to lead preparation, input from Community Strategy, LSP and local community.</li> <li>• Resources available within Council – adequate</li> <li>• Stakeholder and community involvement as per SCI</li> </ul>

## 2.4 Proposals Map

<b>Document Details</b>	<ul style="list-style-type: none"> <li>Proposals Map</li> <li>Site specific allocations, including justification, on OS mapbase at a recognised scale.</li> <li>Borough wide</li> <li>DPD</li> <li>Conform to Core Strategy, RSS, PPSs, Community Strategy and Allocations DPD.</li> </ul>
<b>Timetable</b>	<ul style="list-style-type: none"> <li>Survey and pre-production complete February 2006</li> <li>Key issues and consultation with specific and general bodies (Reg 25) – April 2006</li> <li>Public participation on preferred options (Reg 26) – July - August 2006</li> <li>Submission to SoS – November 2006</li> <li>Pre-examination meeting – April 2007</li> <li>Examination period – July 2007</li> <li>Inspector's binding report – October 2007</li> <li>Adoption and publication – November 2007</li> </ul>
<b>Arrangements for production</b>	<ul style="list-style-type: none"> <li>Forward Planning to lead preparation, input from Community Strategy, LSP and local community.</li> <li>Resources available within Council – adequate with consultancy assistance.</li> <li>Stakeholder and community involvement as per SCI</li> </ul>

## 2.5 Bacup / Stacksteads / Britannia Area Action Plan

<b>Document Details</b>	<ul style="list-style-type: none"> <li>Bacup/Stacksteads/Britannia Area Action Plan</li> <li>Masterplan for Bacup and Stacksteads (part of 'Elevate' project strategy)</li> <li>Bacup/Stacksteads HMR Intervention Area</li> <li>DPD</li> <li>Conform to RSS, Joint Lancashire Structure Plan, Community Strategy, Core Strategy, PPSs, and Backup/Stacksteads ADF.</li> </ul>
<b>Timetable</b>	<ul style="list-style-type: none"> <li>Survey and pre-production phase complete February 2005</li> <li>Key issues and consultation with specific and general bodies (Reg 25) June – July 2005</li> <li>Public participation on preferred options (Reg 26) – October - November 2005</li> <li>Submission to SoS – December 2005</li> <li>Pre-examination meeting – April 2006</li> <li>Examination period – June 2006</li> <li>Inspector's binding report – September 2006</li> <li>Adoption and publication – October 2006</li> </ul>
<b>Arrangements for production</b>	<ul style="list-style-type: none"> <li>Consultants to lead with input from Forward Planning and HMR Team.</li> <li>Resources available within Council adequate with consultancy assistance and input from other sections.</li> <li>Stakeholder and community involvement as per SCI and ELEVATE programme.</li> </ul>

## 2.6 Rawtenstall Town Centre Area Action Plan

<b>Document Details</b>	<ul style="list-style-type: none"> <li>Rawtenstall Town Centre Area Action Plan</li> <li>Masterplan for Rawtenstall Town Centre</li> <li>DPD</li> <li>Conform to RSS, Joint Lancashire Structure Plan, Community Strategy, Core Strategy, and PPSs.</li> </ul>
<b>Timetable</b>	<ul style="list-style-type: none"> <li>Survey and pre-production phase complete January 2005</li> <li>Key issues and consultation with specific and general bodies (Reg 25) – March 2005</li> <li>Public participation on preferred options (Reg 26) June – July 2005</li> <li>Submission to SoS – October 2005</li> <li>Pre-examination meeting – January 2006</li> <li>Examination period – March 2006</li> <li>Inspector's binding report – July 2006</li> <li>Adoption and publication – September 2006</li> </ul>
<b>Arrangements for production</b>	<ul style="list-style-type: none"> <li>Consultants to lead with input from Forward Planning.</li> <li>Resources available within Council adequate with consultancy assistance</li> <li>Stakeholder / community involvement as SCI.</li> </ul>



## 2.7 Development Control Policies

<b>Document Details</b>	<ul style="list-style-type: none"> <li>• Set of policies and criteria to assess development proposals</li> <li>• Borough wide</li> <li>• DPD</li> <li>• Conform to Core Strategy, RSS, PPSs, Community Strategy, Allocations DPD and Proposals Map DPD.</li> </ul>
<b>Timetable</b>	<ul style="list-style-type: none"> <li>• Survey and pre-production complete May 2007</li> <li>• Key issues and consultation with specific and general bodies (Reg 25) – January 2007</li> <li>• Public participation on preferred options (Reg 26) March – April 2007</li> <li>• Submission to SoS – July 2007</li> <li>• Pre-examination meeting – November 2007</li> <li>• Examination period – February 2008</li> <li>• Inspector's binding report – May 2008</li> <li>• Adoption and publication – June 2008</li> </ul>
<b>Arrangements for production</b>	<ul style="list-style-type: none"> <li>• Forward Planning to lead, with significant input from Development Control.</li> <li>• Resources available within Council – currently low</li> <li>• Stakeholder and community involvement as per SCI</li> </ul>

## 2.8 Sustainability Appraisal (SA) Profile

<b>Format</b>	<ul style="list-style-type: none"> <li>• Sustainability Appraisal will be based on the Toolkit to be prepared by consultants for Rossendale Borough Council using ODPM guidelines and the NWRA Toolkit.</li> <li>• SA to take full account of the SEA EU Directive requirements</li> <li>• To be prepared for each DPD and SPD</li> <li>• Initial scoping report to be available at the Issues and Options Consultation stage</li> <li>• Final summary report to be submitted to SoS with submission DPD or draft SPD.</li> </ul>
<b>Process</b>	<ul style="list-style-type: none"> <li>• Identify baseline information for SA, taking full account of SEA</li> <li>• Identify key stakeholders and set up SA working group – to comprise equal input from people with social, economic and environmental backgrounds, to include members of community and local businesses (ideally 6 people in total to make the work manageable)</li> <li>• Identify evaluation criteria</li> <li>• Initial evaluation of possible proposals, prior to Issues and Options consultation</li> <li>• Appraise alternative options and reasons for acceptance or rejection</li> <li>• Summary of SA to be submitted with DPD or SPDs.</li> </ul>
<b>Arrangements for production</b>	<ul style="list-style-type: none"> <li>• Consultants appointed to identify objectives, prepare baseline information, and establish a Toolkit, fully incorporating SEA requirements.</li> <li>• Consultants (or extra member of staff) to conduct SAs and lead the appraisal of proposals and final policies.</li> <li>• Small working group to evaluate policies and proposals. To include equal balance of representatives to provide economic environmental and social input.</li> </ul>



## Section 3: Supporting Statement

### 3.1 Structure of the LDF

- 3.1.1 Work on the LDF for Rossendale is underway. The Community Strategy will inform a series of aims to lead the direction of the Core Strategy and the DPDs and SPDs. This will be cross-related to all other Council strategies and policies, as well as the Community Strategy.
- 3.1.2 The Core Strategy will combine the objectives of the Community Strategy, early community consultation, relevant planning policy, baseline information and the objectives of Council Strategies to relay a set of concise aims which will lead the LDF policy direction. The Core Strategy will set the strategic spatial framework for the DPDs and SPDs to follow. It will also include a Key Policy section, which will set a list of criteria against which all development should comply. The policies will identify the broad locations for development and will also set out a framework for Development Control decisions. Policies contained in the Core Strategy will reflect policy direction prepared at the national and regional levels. The Core Strategy will also contain a key diagram or spatial potrait which will illustrate the broad areas where development and regeneration are expected to take place.
- 3.1.3 An Allocations DPD will be prepared. This will take full account of the Core Strategy and will identify areas for development, including justification. A Proposals Map (on an Ordnance Survey map base) will also be prepared as a DPD. This will take full account of the Core Strategy and will reflect the areas for development as identified in the Allocations DPD. The Proposals Map will detail all site allocations.
- 3.1.4 Two Area Action Plans are being prepared for the Borough's key priority regeneration areas, where major change is intended. The Area Development Framework for the Bacup and Stacksteads Housing Market Pathfinder Area (which is part of the East Lancashire Elevate Programme) will be prepared to ensure that it can be used as AAP within the LDF. An AAP will also be prepared for Rawtenstall Town Centre, the Borough's administrative centre, in order to ensure that the current development proposals and potential projects within the Town Centre complement each other and can be considered within the context of the overall vision for the future of Rawtenstall Town Centre, and will address the lack of suitable facilities for a town within this hierarchy, as well as the currently poor environment in parts of the Town Centre. These Area Action Plans will be produced slightly ahead of the Core Strategy, but will conform to saved policies in the emerging Joint Lancashire Structure Plan (to be adopted 31<sup>st</sup> March 2005).
- 3.1.5 A full Sustainability Appraisal will be produced for each DPD. Work on drafting the objectives and collecting the baseline information has begun, for the Area Action Plans and the Core Strategy. The Council has commissioned consultants to prepare a Toolkit, which will aid the assessment of policies contained in the DPDs and SPDs according to how they meet sustainability objectives.

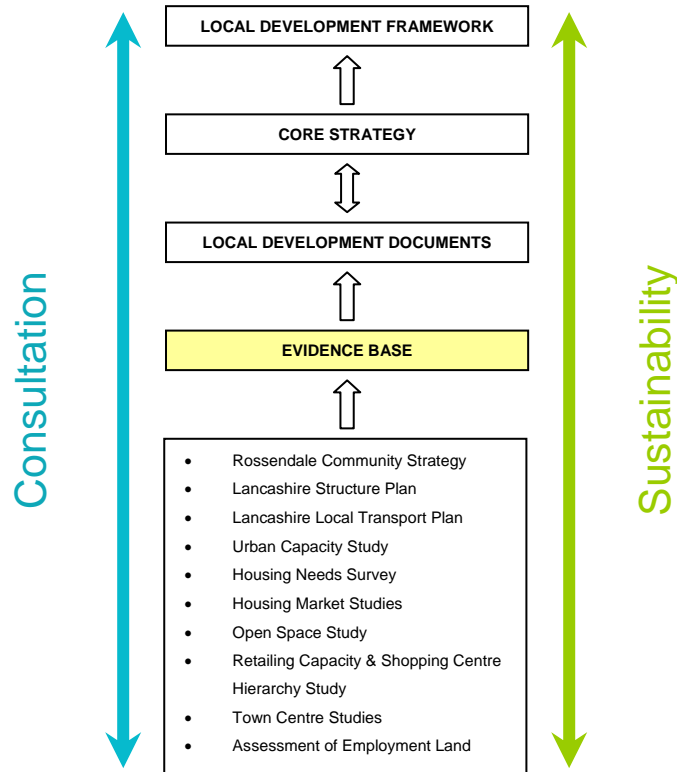
### 3.2 Consultation

- 3.2.1 The LDF represents a new way of planning. The new system is more transparent and accountable. In particular there is to be a front loading approach towards community engagement.
- 3.2.2 The LDF for Rossendale will be prepared with the local community, including residents, local businesses and key stakeholders. A variety of methods will be used to engage local people including tried and tested methods, such as exhibitions and roadshows, but also introducing more modern techniques such as email and interactive electronic surveys. The SCI will detail the precise levels of consultation expected at key stages during the preparation process. A fundamental aim of Rossendale's LDF is to fully engage local people and provide clear links between the LDF and Community Strategy.

### 3.3 Evidence Base

3.3.1 A comprehensive and accurate evidence base is essential to inform the preparation of the LDDs (see Diagram 3). The evidence base for Rossendale will be continuously developed. Further monitoring and technical studies will be prepared prior to the issues and options stage of the DPDs. See Table 3 for details and current status of the evidence base.

**Diagram 3: Local Development Scheme Inter-relationships**





**Table 2: The Evidence Base**

Evidence	Date	Proposed Action	Proposed Date
Biological Heritage Sites register	2003	Annual monitoring collected from LCC	2004 and ongoing
Indicative Floodplain Maps	2003	Annual monitoring obtained from Environment Agency	2004 and ongoing
Historical Contamination		Ongoing work within Environmental Health Department – Rossendale BC	2004 and ongoing
Contaminated Land Strategy	2003	Annual up-dates	2004 and ongoing
Listed Buildings Register	2003	Ongoing as new buildings are listed	2004 and ongoing
Scheduled Ancient Monuments – sites and monuments record	2003	Updates obtained from LCC	2004 and ongoing
Urban Potential Study	2000	Based on revised Regional Methodology. Final Report due	Spring 2005
Housing Land Availability	April 2004	To be up-dated on a yearly basis (April – March) with possible updates, as required.	April 2005 and ongoing
Area Development Frameworks (Confidential Draft)	2003	Expected date of endorsement	2005
Employment Land Availability		To be prepared (to be up-dated on a yearly basis (April – March)	June 2004 and ongoing
Retail Capacity Study		Final Report due	Spring 2005
Retail land availability		To be prepared. To be up-dated on a yearly basis (April –March)	June 2004 and ongoing
Local Transport Plan	2001	Up-dated by LCC	2005
Open Space / Playing Pitch Strategy and Action Plan		In preparation. Final Report	Spring 2005
Culture Strategy	2003		
Rossendale District Local Plan	1995	To be replaced by LDF	
Local Agenda 21 (draft)	2001	Now incorporated within Community Strategy	N/A
Housing Strategy		In preparation	March 2005
East Lancashire Economic Development Strategy	2004		
Community Strategy	2003	Incorporating LA21. Action Plans reviewed annually. Full review timetabled.	2008
Consultation Strategy (Draft)	2003		
Private sector Housing Strategy	2003		
Homelessness Review and Strategy	2003		
Housing Needs & Market Assessment Survey	1998	Final Report due	Spring 2005
RBC Self Assessment	2003		
Crime and Disorder Strategy 2002 – 2005	2002		
Woodland Strategy	1998		
Southern Pennines Upland Regeneration Project	2002		
Strategy for redevelopment of Rossendale's Quarries	1998		
Cycle and Bridleway Strategy	1997		
National Land Use Database (NLUD)	2004	Updated annually	
State of Rossendale Report	2004		
Rossendale Property Land Register		Updated monthly	

### 3.4 Monitoring and Review

- 3.4.1 Review and monitoring are key aspects of the Government's Plan, Monitor and Manage approach to the planning system. Review and monitoring is essential to the successful implementation of the visions and objectives of the LDF.
- 3.4.2 Rossendale will produce an annual monitoring report by the 31<sup>st</sup> December each year. The Annual Monitoring Report will detail:
1. The implementation of the LDS
  2. The extent to which policies in the LDDs are being achieved
  3. The extent to which the Core Strategy has been followed.
- 3.4.3 As part of the annual monitoring, this LDS will be reviewed annually to provide a rolling three-year programme.

### 3.5 2008 and Beyond

- 3.5.1 The LDS shows the programme content for the following three years. Monitoring and Review will be an important aspect of the ongoing work, as referred to above. Resources must allow for further development and refinement of the constituent parts of the LDF. Rossendale intends to bring local planning into local neighbourhoods, and the programme from 2008 will introduce an opportunity for local people to undertake planning-for-real projects to develop spatial plans for the local areas.
- 3.5.2 Other DPDs likely to be added in the following Local Development Scheme include a Conservation Areas document. Planning obligations and Development in the Countryside, together with a design guide are intended to be produced as SPDs and are likely to be introduced when this Local Development Scheme is updated.

### 3.6 Risk Assessment

**Table 3: Identification of Areas of Risk**

Risk	Problem	Mitigation Measures
Programme slippage	Key milestones within the LDF will not be met. A spatial plan will not be delivered	The Council has taken a realistic view to the programme and has decided to address the key documents of the Core Strategy and Area Action Plans for key regeneration areas.
Staff Turnover	Under-resourced to take forward the LDF preparation.	Allocation of responsibility across the team will ensure consistency in the absence of a member of staff. The Council has adopted an approach to the use of consultancy assistance.
Inability to recruit	Under-resourced to take forward the LDF preparation.	The Council will endeavor to fill vacant posts. (e.g. Planning Officer position filled 01/04/2005)
Capacity of Planning Inspectorate	Inability to meet deadlines for examination will result in Adoption delays	The Council has endeavored to spread the hearing dates to avoid congestion within the Rossendale programme.

### 3.7 Resources

- 3.7.1 The Forward Planning Team at Rossendale Borough Council currently comprises the following posts: Senior Planning Officer (1), a Planning Officer (1) and a Planning Technician. Managerial support will be available from the Head Economic Regeneration and Spatial Development. In addition the post of Spatial Development Manager has been re-advertised, offering more favourable conditions, and this manager will be responsible on a day to day basis for the LDF, when appointed.

- 3.7.2 The Council has also commissioned consultants to undertake specific aspects of the LDF. Halsall Lloyd Partnership are progressing the Area Action Plan for the Bacup and Stacksteads Housing Pathfinder and Arups are producing the AAP for Rawtenstall Town Centre. The Council is also in the process of asking consultants to tender to undertake the earlier stages of the Core Strategy (i.e. up to participation on the preferred options, expected November 2005) in order to address the current shortfall in staffing within the section. The resources to be afforded to the preparation of an LDF will be as follows:

**Table 4: Resources**

Officer	Tasks	Time spent on LDF (%)
Head of Spatial Development and Economic Regeneration	Overall responsibility for the Council's planning functions, including service business planning.	25%
Spatial Development Manager	Day to day management of the Forward Planning Team i.e. Core Strategy preparation, LDD preparation, consultation.	50%
Senior Planning Officer	Gathering baseline information, managing consultants, monitoring, Core Strategy preparation, LDD preparation, consultation.	100%
Planning Officer & Assistant Planner	Gathering baseline information, managing consultants, monitoring, Core Strategy preparation, LDD preparation, consultation.	100%
Planning Technician	Gathering baseline information, monitoring and survey.	80%

- 3.7.3 Rossendale Borough Council is committed to the early preparation of an LDF. Work has begun on the collection of baseline information and monitoring studies. Day to day management of the Team will be provided by the Spatial Development Manager, when appointed), responsible for both Development Control and Forward Planning sections. The Head of Service will be likely to devote 25% of time to the Local Development Framework process.

### 3.8 Incorporating Existing Policies

- 3.8.1 Rossendale District Local Plan covers the period 1991 – 2001 and is now in many respects out-of-date, particularly in respect of policies that rely upon numeric references. However, the Local Plan contributes to decision making on planning applications and will continue to be of use until such time as appropriate LDDs are in place. This particularly relates to non-numeric, criteria-based policies. In line with the Transitional Arrangements detailed in PPS12 (Local Development Frameworks) the Rossendale Local Plan will be 'saved' for 3 years on commencement of the Act. The Rossendale Local Plan will therefore maintain development plan status until this is superseded by updated policy in the LDF. An extension to the three year period will be sought for the following policy which is intended to remain in force for the period covered by the proposed LDF:

**Table 5: Saved Policies**

Current Status	Title	Proposed Action
Local Plan Policy	DS3 Green Belt	Save

3.8.2 The remaining policies of the Local Plan will continue for 3 years or until such time as they are replaced by emerging Local Development Documents, identified in this LDS. Some policies will be deleted at the end of the three year saved period (See Table 6)

**Please note:** Timings of replacement policies are shown in the Schedule of LDDs.

**Table 6: Deleted Policies**

Current Status	Title	Proposed Action
Local Plan Policy	DS1 Urban Boundary	Replace – Core Strategy, Allocations DPD, Proposals Map
Local Plan Policy	DS2 Settlements	Replace – Core Strategy
Local Plan Policy	DS4 Inset Villages	delete
Local Plan Policy	DS5 Development outside the Urban Boundary and Green Belt	Replace – Core Strategy
Local Plan Policy	DS6 Community Uses	Replace – Core Strategy
Local Plan Policy	E1 Greenland	Replace – Core Strategy
Local Plan Policy	E2 Recreation Areas	Replace – Core Strategy
Local Plan Policy	E3 Nature Conservation	Replace – Core Strategy
Local Plan Policy	E4 Tree Preservation	delete
Local Plan Policy	E5 Environmental Improvement Areas	delete
Local Plan Policy	E6 Ground Instability	delete
Local Plan Policy	E7 Contaminated land	Replace – Core Strategy
Local Plan Policy	E8 Landfill Sites	delete
Local Plan Policy	E9 Pollution	Replace – Core Strategy
Local Plan Policy	E10 Groundwater Protection	Replace – Core Strategy
Local Plan Policy	E11 Water Supplies	delete
Local Plan Policy	E12 Noise Attenuation	delete
Local Plan Policy	E13 Noise Sources	delete
Local Plan Policy	C1 Countryside Access	delete
Local Plan Policy	C2 Moorlands	delete
Local Plan Policy	C3 Area of Special Landscape	delete
Local Plan Policy	C4 Agricultural Land	delete
Local Plan Policy	C5 Alternative Farm Income	delete
Local Plan Policy	C6 Re-use of rural buildings	delete
Local Plan Policy	C7 Agricultural buildings	delete
Local Plan Policy	C8 Countryside Recreation	delete
Local Plan Policy	C9 Access to the countryside	delete
Local Plan Policy	C10 Valley Ways	delete
Local Plan Policy	C11 Pennine Bridleways	delete
Local Plan Policy	C12 Waterbased recreation	Replace - Core Strategy
Local Plan Policy	C13 Woodland and Trees	delete
Local Plan Policy	C14 Touring Caravans	delete
Local Plan Policy	HP1 Conservation Areas	Replace – Core Strategy, Development Control DPD
Local Plan Policy	HP2 Listed Buildings	Replace – Core Strategy, Development Control DPD
Local Plan Policy	HP3 Satellite Dishes	delete
Local Plan Policy	HP4 New uses for Old Buildings	delete
Local Plan Policy	HP5 Shop Fronts	delete
Local Plan Policy	HP6 Ancient Monuments	Replace – Core Strategy, Development Control DPD
Local Plan Policy	DC1 Development Criteria	delete
Local Plan Policy	DC2 Landscaping	delete
Local Plan Policy	DC3 Public Open Space	delete
Local Plan Policy	DC4 Materials	delete
Local Plan Policy	DC5 Advertisements	delete
Local Plan Policy	DC6 Dormers	delete
Local Plan Policy	DC7 Development in Large Gardens	delete
Local Plan Policy	DC8 Overhead Lines	delete
Local Plan Policy	DC9 Wind Farms	delete
Local Plan Policy	DC10 Telecommunications Development	delete
Local Plan Policy	DC11 Satellite Antenna	delete
Local Plan Policy	DC12 Cat and Dog Boarding/Breeding Establishments	delete
Local Plan Policy	J1 Land for Employment	Replace – Core Strategy, Allocations DPD, Proposals Map

**Table 6: Deleted Policies continued**

Current Status	Title	Proposed Action
Local Plan Policy	J2 Service Industries	Replace – Core Strategy, Allocations DPD, Proposals Map
Local Plan Policy	J3 Existing Employment Areas	Replace – Core Strategy, Allocation Proposals Map
Local Plan Policy	J4 Hazardous Industries	delete
Local Plan Policy	J5 Tourism	Replace – Core Strategy
Local Plan Policy	H1 Conversions of Upper Floors in Town Centres	delete
Local Plan Policy	H2 Protection of Garage Sites	delete
Local Plan Policy	H3 Land for Residential Development	Replace – Core Strategy, Allocations DPD, Proposals Map
Local Plan Policy	T1 Road Hierarchy	delete
Local Plan Policy	T2 Access Improvements	delete
Local Plan Policy	T3 Commercial Traffic	delete
Local Plan Policy	T4 Car parking	Replace – Core Strategy, Development Control DPD
Local Plan Policy	T5 Commercial Vehicle Parking	delete
Local Plan Policy	T6 Pedestrians	delete
Local Plan Policy	T7 Cycling	delete
Local Plan Policy	T8 Access for Disabled People	delete
Local Plan Policy	T9 Waterfoot By-pass	delete
Local Plan Policy	T10 Bus Services	delete
Local Plan Policy	T11 Access to Principal Road Network	delete
Local Plan Policy	Traffic in Town Centres	delete
Local Plan Policy	Off-Street Car Parking	delete
Local Plan Policy	Roads in Major Residential Sites	delete
Local Plan Policy	S1 Major Retail proposals in Town Centres	delete
Local Plan Policy	S2 Major Retail Proposals Outside Town Centres	delete
Local Plan Policy	S3 Offices in Shopping Streets	delete
Local Plan Policy	S4 Hot Food Shops	delete
Local Plan Policy	S5 Convenience Shops	delete
Local Plan Policy	S6 Shop Fronts	delete

3.8.3 In addition the emerging Joint Lancashire Structure Plan has been adopted March 2005. The policies in this Plan will be saved for at least 3 years, until replaced by the appropriate Local Development Framework policies, or policies in the Regional Spatial Strategy.

### 3.9 Conclusion

3.9.1 This Local Development Scheme details the work which will be undertaken in Rossendale in order to produce a Local Development Framework for the area. This is in line with the Government's proposals to modernise the planning system. This LDS will be reviewed annually, but provides a valuable starting point to lead preparation. It also provides information to the local community and interested stakeholders about the process and when they can expect to become involved and participate.



For further information please contact:

Colin Walker  
Head of Economic Regeneration & Spatial Development  
Rossendale Borough Council  
Town Hall  
Rawtenstall  
BB4 7 LZ

01706 242345

[colinwalker@rossendalebc.gov.uk](mailto:colinwalker@rossendalebc.gov.uk)

or

Stephen Pimlott  
Planning Officer  
Forward Planning  
Rossendale Borough Council  
Town Hall  
Rawtenstall  
BB4 7 LZ

01706 244794

[stephenpimlott@rossendale.gov.uk](mailto:stephenpimlott@rossendale.gov.uk)