

H.M. LAND REGISTRY

TITLE NUMBER

LA5688

ORDNANCE SURVEY
PLAN REFERENCE

COUNTY
LANCASHIRE

SHEET

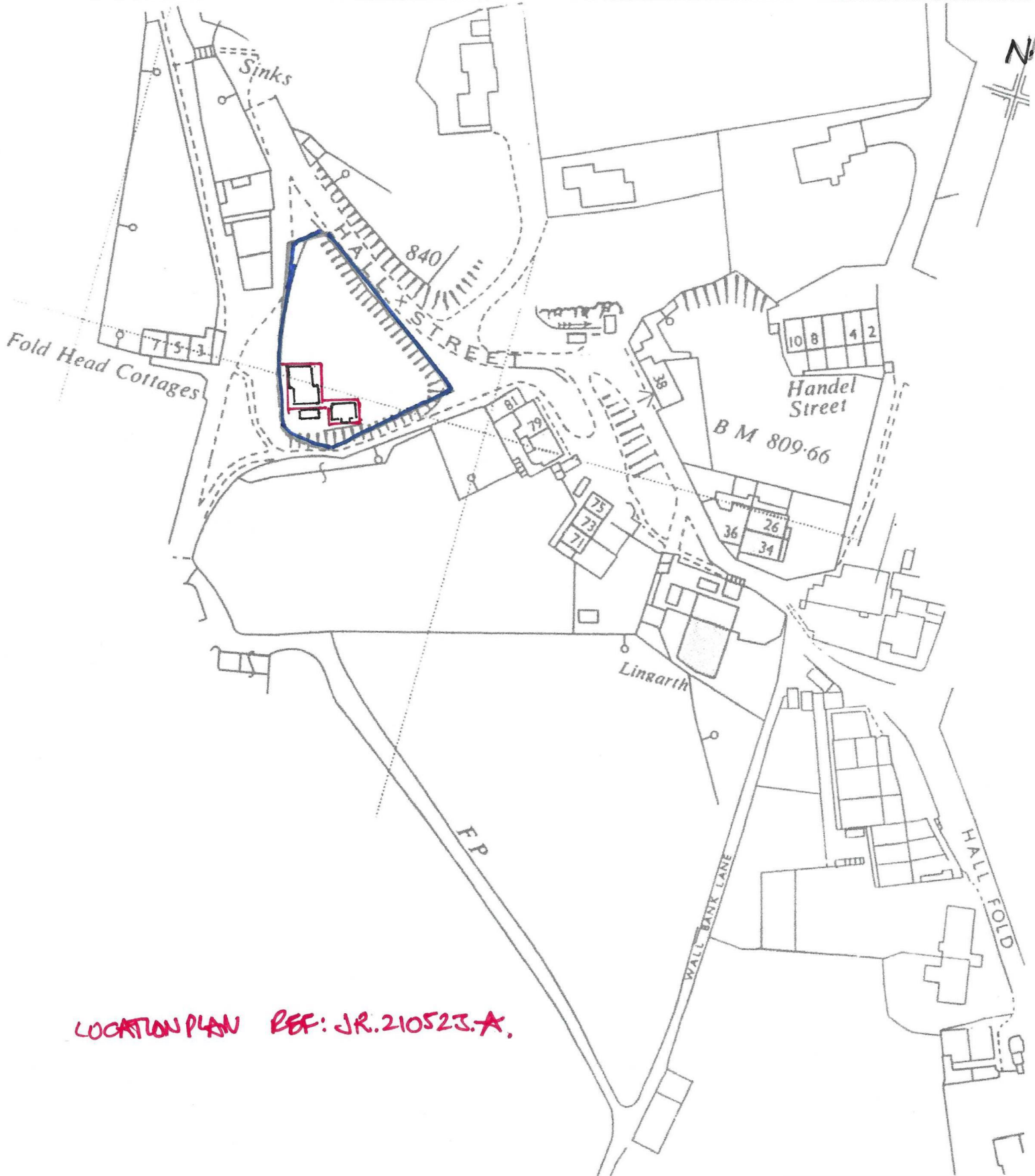
NATIONAL GRID

SD 8717

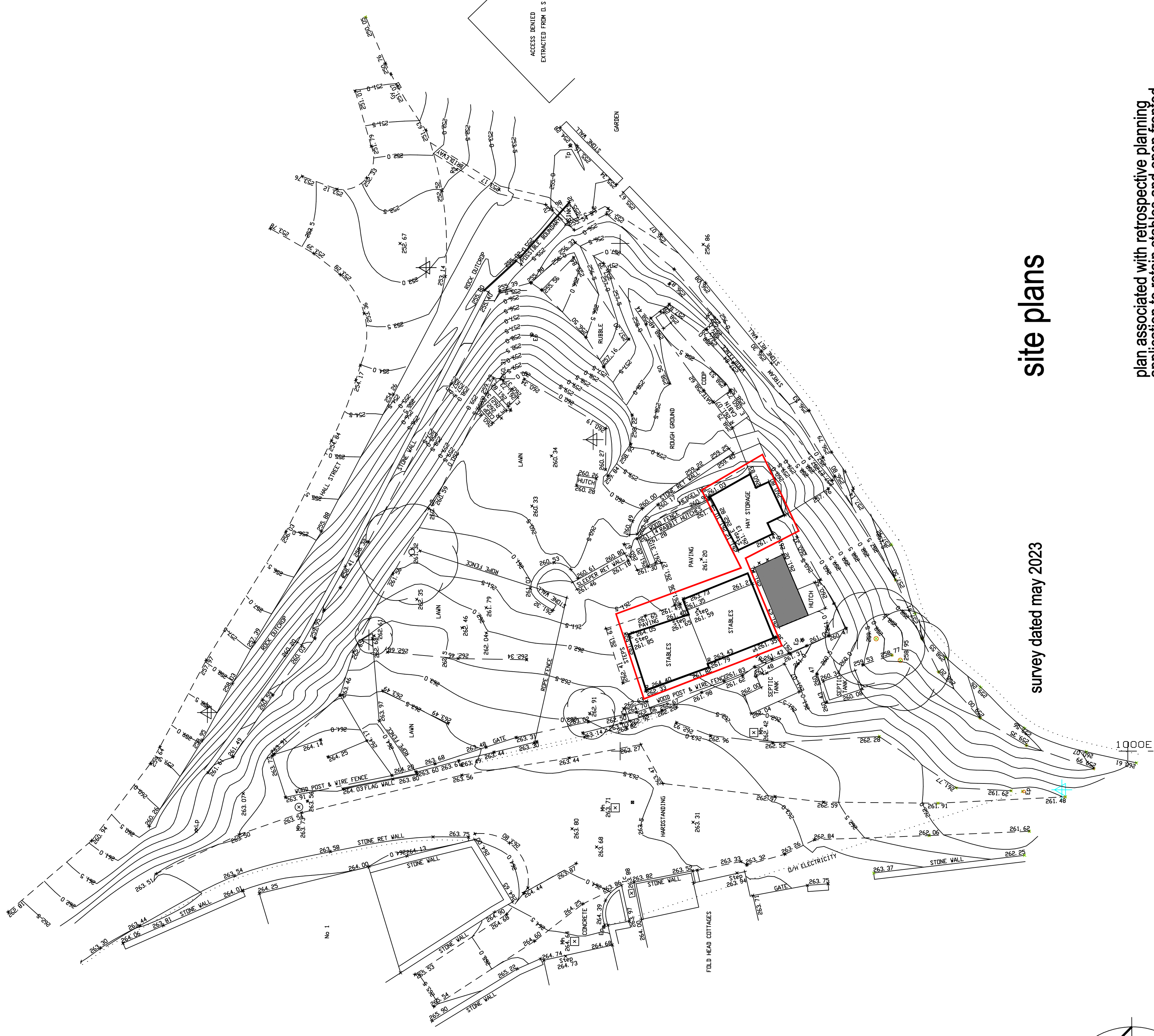
Scale: 1/1250 Enlarged from 1/2500

ROSSENDALE DISTRICT

©Crown copy



LOCATION PLAN REF: JR.210523.A.



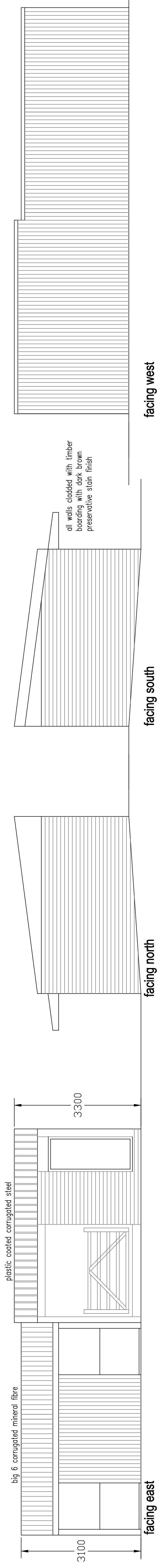
site plans

plan associated with retrospective planning application to retain stables and open fronted hay store on land used as allotment at

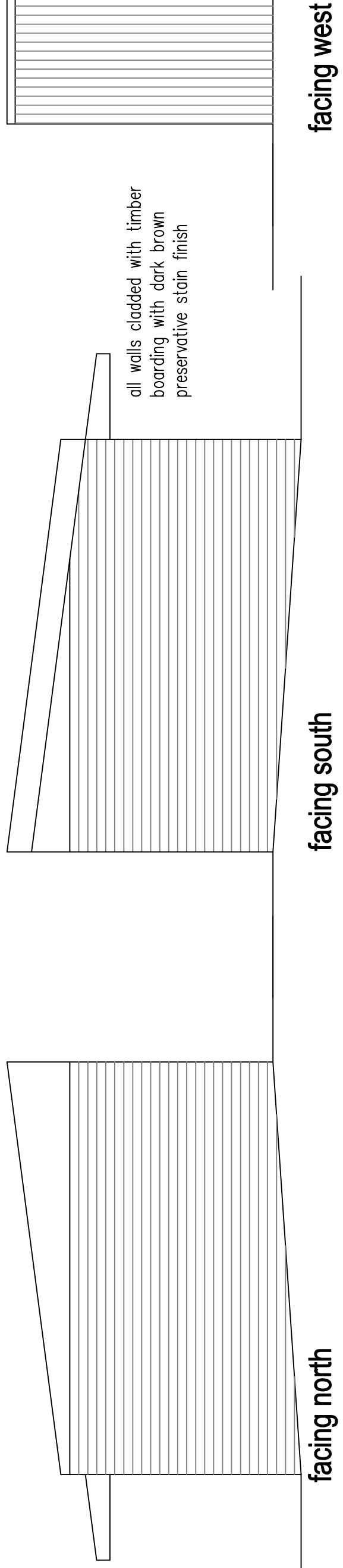
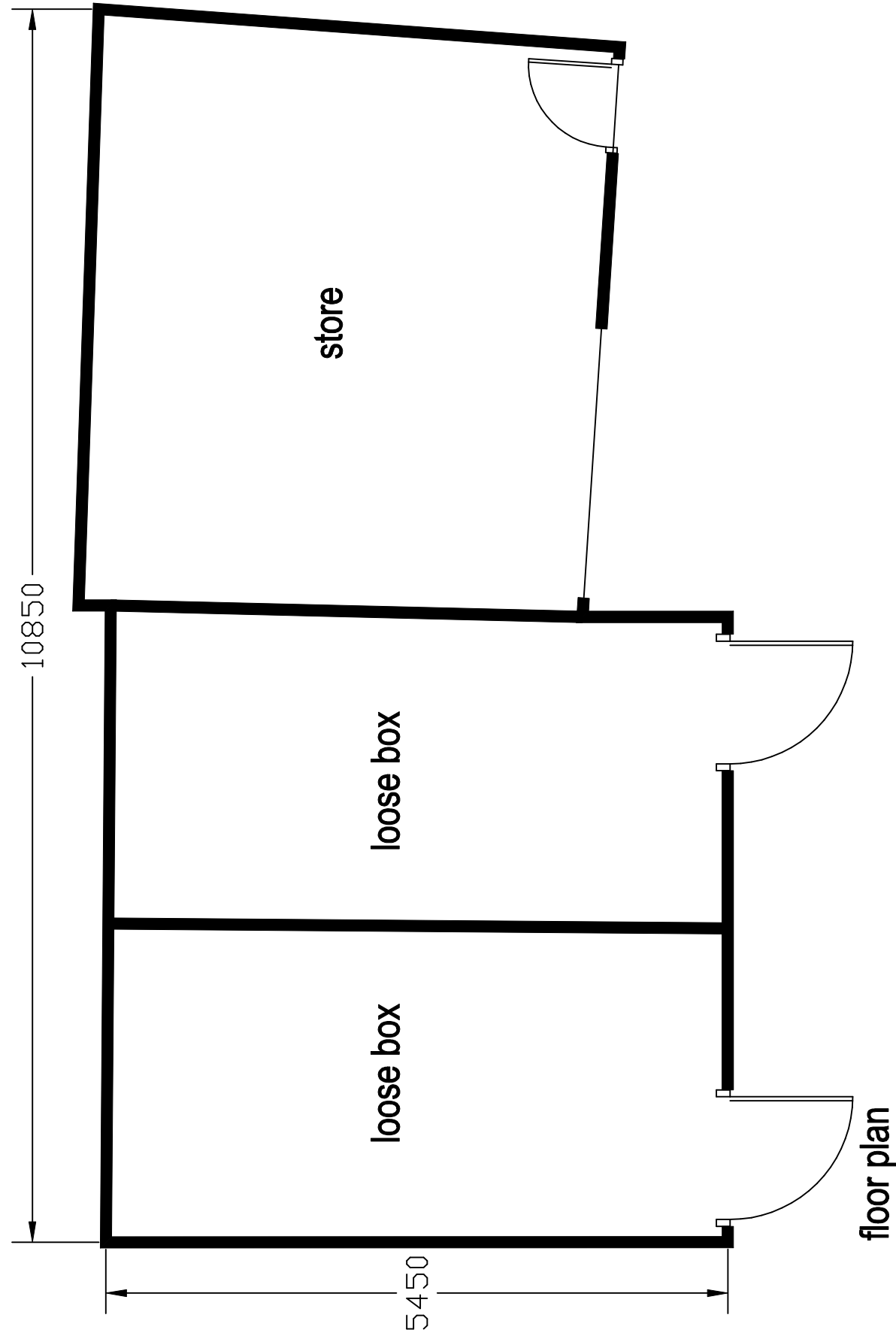
Hall Street Whitworth

scale 1:200 @ A1
 0m
 linear scale 1:200 @ A1
 20m

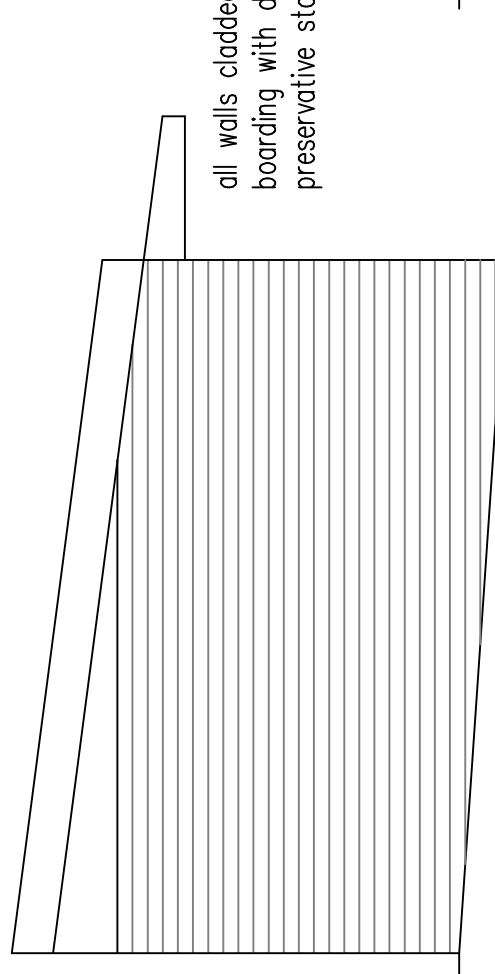
drawing number HS-15-05-23-A



elevations

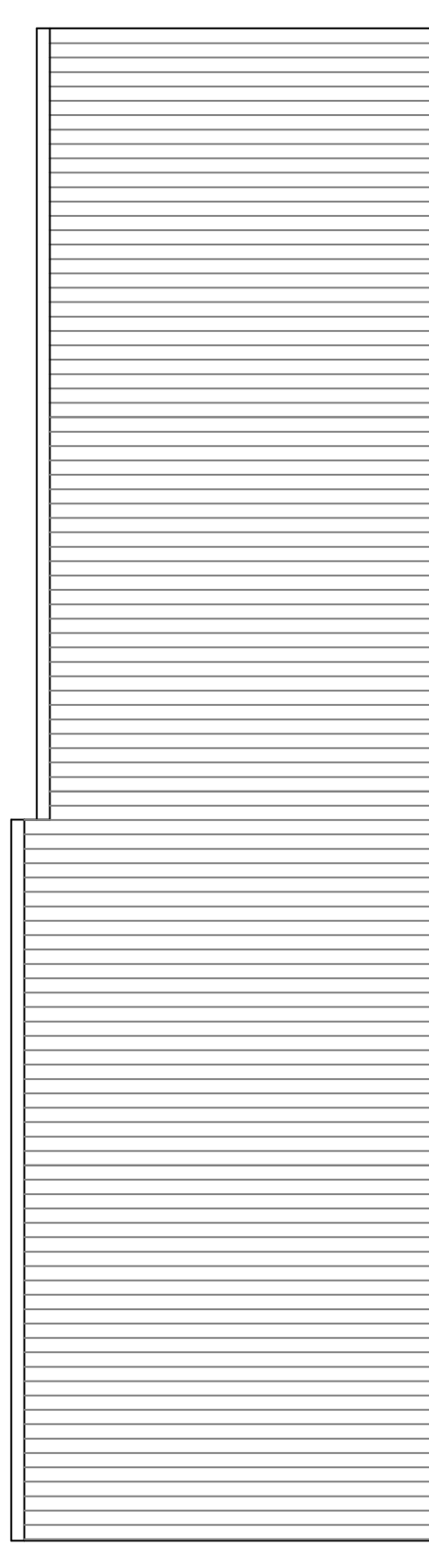


facing north

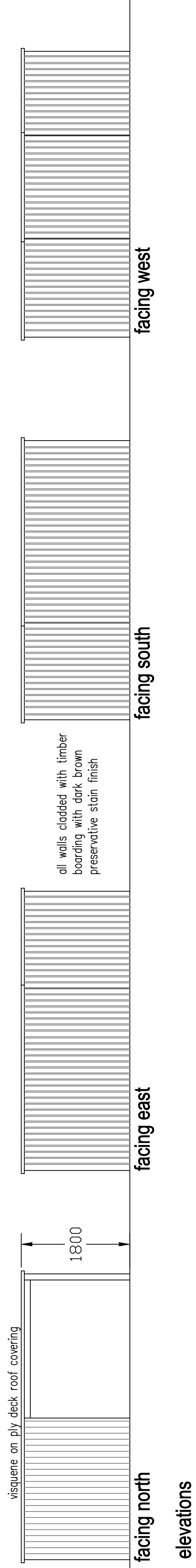


facing south

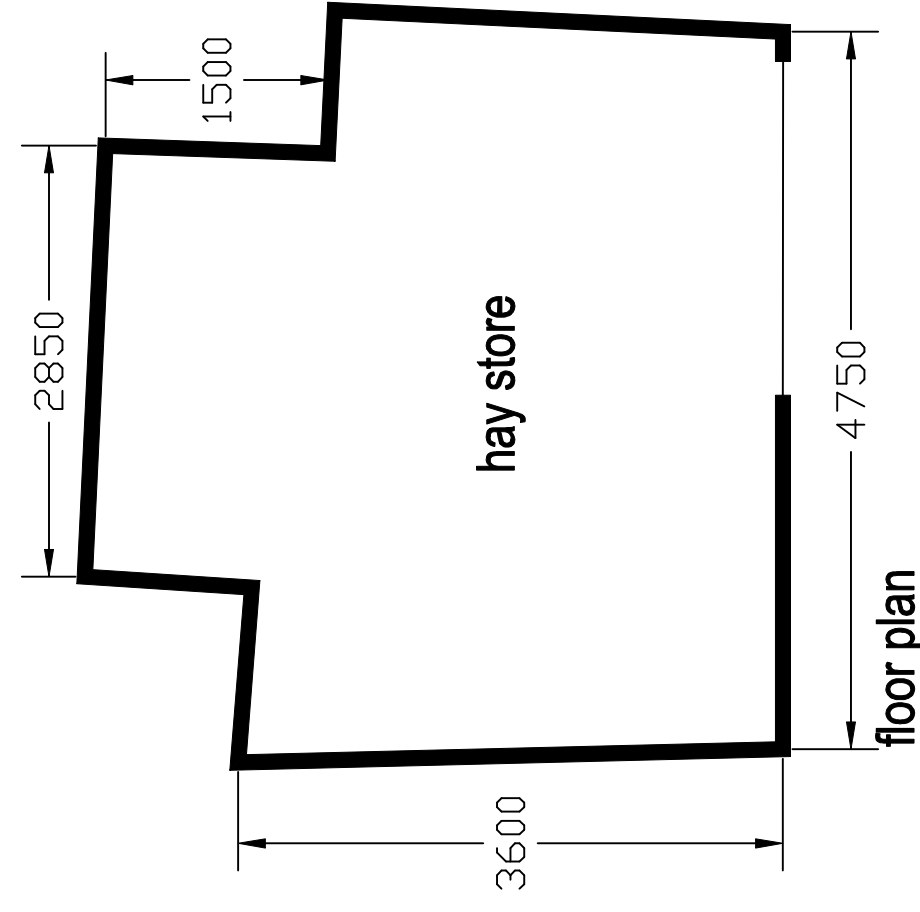
all walls clad with timber boarding with dark brown preservative stain finish



facing west



elevations

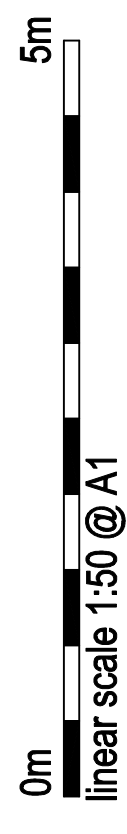


building details

plan associated with retrospective planning application to retain stables and open fronted hay store on land used as allotment at

**Hall Street
Whitworth**

scale 1:50 @ A1



drawing number HS-16-05-23-B





