

Subject:	Treasury Management Strategy & Treasury Management Practices	Status:	For Publication
Report to:	Council	Date:	5 th March 2025
Report of:	Director of Resources	Lead Member:	Resources
Key Decision:	<input checked="" type="checkbox"/> Forward Plan <input checked="" type="checkbox"/>	General Exception	<input type="checkbox"/> Special Urgency <input type="checkbox"/>
Equality Impact Assessment:	Required:	No	Attached: No
Biodiversity Impact Assessment:	Required:	No	Attached: No
Contact Officer:	Chris Warren	Telephone:	01706 252409
Email:	chriswarren@rossendalebc.gov.uk		

1. RECOMMENDATION(S)

Cabinet Recommends that Council approves:-

- 1.1 The Treasury Management Strategy Statement, including the borrowing strategy
- 1.2 The Investment Strategy, including Investment Indicators
- 1.3 The Minimum Revenue Provision (MRP) Statement
- 1.4 To delegate any further minor amendments to the Director of Resources (s.151) in consultation with the Lead Member for Resources.

2. EXECUTIVE SUMMARY

- The purpose of the report is to obtain Cabinet approval of the updated Treasury Management Strategy Statement (TMSS) and Treasury Management Policy and Practices (TMP).

3. BACKGROUND

- 3.1 This is an annual update of the Treasury Management Strategy Statement (Appendix 1) and the Treasury Management Policy and Practices (Appendix 2), based upon the Chartered Institute of Public Finance and Accountancy's (CIPFA) Treasury Management and Prudential Codes 2021.
- 3.2 Treasury management is concerned with how organisations manage their cash resources, and its scope covers borrowing, investment and hedging instruments and techniques. Risk is inherent in all treasury management activities and it is necessary to balance risk and return. In the public services it is generally considered that the priority is to protect capital rather than maximise return.
- 3.3 The Treasury Management Strategy for 2025/26 at Appendix 1 is written in conjunction with both the revenue budget for 2025/26 and the Capital Strategy and Capital Programme 2025/26 to 2028/29 which are also being placed before members for consideration, specifically in respect of the TMSS at Appendix 1 key clauses as follows:
 - Capital Strategy at 1.2.1
 - Capital Expenditure at 2.1 and 5.1.1
 - The Capital Financing Requirement (CFR) at 2.2
 - Minimum Revenue Provision (MRP) and Voluntary Revenue Provision (VRP) at 2.5
 - Interest expenditure and income at 5.1.2
 - Credit Worthiness Policy at 4.2

- 3.4 The interest rates quoted at paragraphs 3.3 and 5.2 of the strategy reflect the average of samples gathered by Link Asset Services as at the 8th January 2025 from city and non-city forecasters, including HM Treasury. The forecasts are an estimate based on today's financial climate. Whilst forecasters are comparatively confident about their estimates for the coming financial year, those for longer term are far less reliable.
- 3.5 The Treasury Management Strategy Statement covers:
- treasury controls and reporting mechanisms required to limit the treasury risk and activities of the Council
 - the current and expected cash and reserve balances at (2.4)
 - the borrowing requirement and borrowing limits at (3.1)
 - prospects for interest rates at (3.3)
 - policy on borrowing in advance of need at (3.5)
 - the investment strategy and expected rates of return at (4.4)
 - Prudential Indicators and the MRP strategy at (5.1)
 - treasury management scheme of delegation at (5.6) and the relevant roles and responsibilities of delegated officers at (5.7)
- 3.6 As part of the council's budget-setting work the estimates of future interest rates, capital resources and expenditure and capital financing costs (through the Minimum Revenue Provision) have been included in arriving at a balanced budget for 2025/26.
- 3.7 The Treasury Management Policy and Practices at Appendix 2 provide further operational detail on the plans within the Treasury Management Strategy Statement. For 2025/26 there have been only very minor amendments to the Treasury Management Policy and Practises to cover the works with related parties and subsidiaries and to keep it in line with updates in the TMSS above.
- 3.8 The Treasury Management Practises cover:
- risk management arrangements and techniques
 - performance measurement
 - decision making and operational controls within the day to day administration of treasury and cash flow management
 - measures to prevent money laundering
 - training requirements for staff included within the delegation arrangements in the Treasury Management Strategy Statement
 - further details on the use of external service providers
- 3.9 At times of low interest rates from banks, one alternative use of resources open to the council is the pre-payment of revenue creditors in order to achieve early payment discounts. These transactions are not treated as investments, therefore do not fall under the TMS or TMPs in the appendices attached. However, the same considerations of risk and reward should be considered prior to entering into any such agreement. The Director of Resources must be sure of the nature and obligation of the future transactions, their expected value and the credit worthiness of the supplier/counterparty involved. At present there are neither arrangements in place nor plans to enter into such agreements.

4. RISK

4.1 The key risks associated with the strategy include:

- An unexpected increase/decrease in bank base rates.
- An unexpected reduction in cash balances. Each individual opportunity would be assessed on its own merits and reported to members at the next available opportunity.

4.2 All the issues raised and the recommendations in this report also involve risk considerations as set out below:

- Failure to comply with legal statute, Codes of Practice and regulations of the council.
- Financial risks and credit risks exposure as a result of treasury management decisions. The TMS lays the ground rules for balancing the desire to maximise interest earning capacity with the potential risks of investments in the financial sector, especially in the current economic climate.

5. FINANCE

Finance matters are dealt with in the body of the report.

6. LEGAL

There are no material legal implications.

7. POLICY AND EQUALITIES IMPLICATIONS

7.1 Consultation has taken place with the Council's treasury management advisors – Link Asset Services.

7.2 Officers have ensured that the documents attached meet the requirements of the current CIPFA revised Treasury Management Code of Practice and revised Prudential Code 2021 by adopting the proforma documents provided by Link Asset Services with only minor adaptations for local considerations.

8. REASON FOR DECISION

8.1 Following consideration at Full Council, Members are asked to approve the adoption of the updated Treasury Management Strategy Statement and Treasury Management Policy and Practises, which will ensure continued compliance with the Code and continue to manage the council's exposure to financial risk.

8.2 In light of the current economic climate and potential resultant changing cash flow requirements, Members are asked to delegate any minor amendments required within year to the Director of Resources in consultation with the Lead Member for Resources.

Background Papers	
Document	Place of Inspection
Previously adopted 2024/25 TMSS & TMP	Website: Full Council February 2024

Treasury Management Strategy Statement

Minimum Revenue Provision Policy Statement
and Annual Investment Strategy

2025/26

INDEX

1. KEY CONSIDERATIONS	3
1.1 Background	5
1.2 Reporting Requirements	5
1.3 Treasury Management Strategy for 2025/26	6
1.4 Training	7
1.5 Treasury Management Consultants	8
2. THE CAPITAL PRUDENTIAL INDICATORS 2025/26 – 2028/29	9
2.1 Capital Expenditure and Financing	9
2.2 The Authority’s Borrowing Need (the Capital Financing Requirement).....	9
2.3 Liability Benchmark.....	10
2.4 Core Funds and Expected Investment Balances	11
2.5 Minimum Revenue Provision (MRP) Policy Statement	12
3. BORROWING	13
3.1 Current Portfolio Position	13
3.2 Treasury Indicators: Limits to Borrowing Activity.....	14
3.3 Prospects for Interest Rates.....	15
3.4 Borrowing Strategy.....	18
3.5 Policy on Borrowing in Advance of Need.....	18
3.6 Rescheduling.....	18
3.7 New Financial Institutions as a Source of Borrowing and / or Types of Borrowing.....	18
3.8 Approved Sources of Long and Short-term Borrowing	19
4 ANNUAL INVESTMENT STRATEGY	20
4.1 Investment Policy – Management of Risk	21
4.2 Creditworthiness Policy.....	21
4.3 Limits.....	24
4.4 Investment Strategy.....	24
4.5 Investment Performance / Risk Benchmarking	25
4.6 End of Year Investment Report	26
5 APPENDICES	27
5.1 the Capital Prudential and Treasury Indicators 2025/26 – 2027/28.....	28
5.2 Interest Rate Forecasts 2024-2027	29
5.3 Economic Background.....	30
5.4 Treasury Management Practice (Tmp1) – Credit and Counterparty Risk Management .	33
5.5 Approved Countries for Investments	35
5.6 Treasury Management Scheme of Delegation.....	36
5.7 The Treasury Management Role of The Section 151 Officer.....	37

1. Key Considerations

2021 revised CIPFA Treasury Management Code and Prudential Code – changes which will impact on future TMSS/AIS reports and the risk management framework

CIPFA published the revised Codes on 20th December 2021 and stated that revisions need to be included in the reporting framework from the 2023/24 financial year. This Authority, therefore, has to have regard to these Codes of Practice when it prepares the Treasury Management Strategy Statement and Annual Investment Strategy, and also related reports during the financial year, which are taken to Full Council for approval.

The revised Treasury Management Code required all investments and investment income to be attributed to one of the following three purposes: -

Treasury management

Arising from the organisation's cash flows or treasury risk management activity, this type of investment represents balances which are only held until the cash is required for use. Treasury investments may also arise from other treasury risk management activity which seeks to prudently manage the risks, costs or income relating to existing or forecast debt or treasury investments.

Service delivery

Investments held primarily and directly for the delivery of public services including housing, regeneration and local infrastructure. Returns on this category of investment which are funded by borrowing are permitted only in cases where the income is "either related to the financial viability of the project in question or otherwise incidental to the primary purpose".

Commercial return

Investments held primarily for financial return with no treasury management or direct service provision purpose. Risks on such investments should be proportionate to an authority's financial capacity – i.e., that 'plausible losses' could be absorbed in budgets or reserves without unmanageable detriment to local services. An authority must not borrow to invest primarily for financial return.

The revised Treasury Management Code requires an authority to implement the following: -

2. **Adopt a liability benchmark treasury indicator** to support the financing risk management of the capital financing requirement; this is to be shown in chart form for a minimum of ten years, with material differences between the liability benchmark and actual loans to be explained;
3. **Long-term treasury investments**, (including pooled funds), are to be classed as commercial investments unless justified by a cash flow business case;
4. **Pooled funds** are to be included in the indicator for principal sums maturing in years beyond the initial budget year;
5. Amendment to the **knowledge and skills register** for officers and members involved in the treasury management function - to be proportionate to the size and complexity of the treasury management conducted by each authority;
6. **Reporting to members is to be done quarterly**. Specifically, the Director of Resources (s.151) is required to establish procedures to monitor and report performance against all forward-looking prudential indicators at least quarterly. The s.151 officer is expected to establish a measurement and reporting process that highlights significant actual or forecast deviations from the approved indicators.

However, monitoring of prudential indicators, including forecast debt and investments, is not required to be taken to Full Council and should be reported as part of the authority's integrated revenue, capital and balance sheet monitoring;

7. **Environmental, social and governance (ESG)** issues to be addressed within an authority's treasury management policies and practices (TMP1).

The main requirements of the Prudential Code relating to service and commercial investments are: -

1. The risks associated with service and commercial investments should be proportionate to their financial capacity – i.e. that plausible losses could be absorbed in budgets or reserves without unmanageable detriment to local services;
2. An authority must not borrow to invest for the primary purpose of commercial return;
3. It is not prudent for local authorities to make any investment or spending decision that will increase the CFR, and so may lead to new borrowing, unless directly and primarily related to the functions of the authority, and where any commercial returns are either related to the financial viability of the project in question or otherwise incidental to the primary purpose;
4. An annual review should be conducted to evaluate whether commercial investments should be sold to release funds to finance new capital expenditure or refinance maturing debt;
5. A prudential indicator is required for the net income from commercial and service investments as a proportion of the net revenue stream;
6. Create new Investment Management Practices to manage risks associated with non-treasury investments, (similar to the current Treasury Management Practices).

An authority's Capital Strategy or Annual Investment Strategy should include: -

1. The authority's approach to investments for service or commercial purposes (together referred to as non-treasury investments), including defining the authority's objectives, risk appetite and risk management in respect of these investments, and processes ensuring effective due diligence;
2. An assessment of affordability, prudence and proportionality in respect of the authority's overall financial capacity (i.e., whether plausible losses could be absorbed in budgets or reserves without unmanageable detriment to local services);
3. Details of financial and other risks of undertaking investments for service or commercial purposes and how these are managed;
4. Limits on total investments for service purposes and for commercial purposes respectively (consistent with any limits required by other statutory guidance on investments);
5. Requirements for independent and expert advice and scrutiny arrangements (while business cases may provide some of this material, the information contained in them will need to be periodically re-evaluated to inform the authority's overall strategy);
6. State compliance with paragraph 51 of the Prudential Code in relation to investments for commercial purposes, in particular the requirement that an authority must not borrow to invest primarily for financial return.

As this TMSS and AIS deals solely with treasury management investments, the categories of service delivery and commercial investments should be addressed as part of the Capital Strategy report.

However, as investments in commercial property have implications for cash balances managed by the treasury team, it will be for each authority to determine whether to add a high level summary of the impact that commercial investments have, or may have, if it is planned to liquidate such investments within the three year time horizon of this report, (or a longer time horizon if that is felt appropriate).

1.1 Background

The Authority is required to operate a balanced revenue budget, which broadly means that cash raised during the year will meet cash expenditure. Part of the treasury management operation is to ensure that this cash flow is adequately planned, with cash being available when it is needed. Surplus monies are invested in low-risk counterparties or instruments commensurate with the Authority's low risk appetite, providing adequate liquidity initially before considering investment return.

The second main function of the treasury management service is the funding of the Authority's capital plans. These capital plans provide a guide to the borrowing need of the Authority, essentially the longer-term cash flow planning, to ensure that it can meet its capital spending obligations. This management of longer-term cash may involve arranging long or short-term loans or using longer-term cash flow surpluses. On occasion, when it is prudent and economic, any debt previously drawn may be restructured to meet risk or cost objectives.

The contribution the treasury management function makes to the Authority is critical, as the balance of debt and investment operations ensure liquidity or the ability to meet spending commitments as they fall due, either on day-to-day revenue or for larger capital projects. The treasury operations will see a balance of the interest costs of debt and the investment income arising from cash deposits affecting the available budget. Since cash balances generally result from reserves and balances, it is paramount to ensure adequate security of the sums invested, as a loss of principal will in effect result in a loss to the General Fund Balance.

CIPFA defines treasury management as:

"The management of the local authority's borrowing, investments and cash flows, including its banking, money market and capital market transactions; the effective control of the risks associated with those activities; and the pursuit of optimum performance consistent with those risks."

Whilst any commercial initiatives or loans to third parties will impact on the treasury function, these activities are generally classed as non-treasury activities, (arising usually from capital expenditure), and are separate from the day-to-day treasury management activities.

1.2 Reporting Requirements

1.2.1 Capital Strategy

The CIPFA 2021 Prudential and Treasury Management Codes require all local authorities to prepare a Capital Strategy report which will provide the following: -

- a high-level long-term overview of how capital expenditure, capital financing and treasury management activity contribute to the provision of services
- an overview of how the associated risk is managed
- the implications for future financial sustainability

The aim of the strategy is to ensure that all the Authority's elected members fully understand the overall long-term policy objectives and resulting Capital Strategy requirements, governance procedures and risk appetite.

1.2.2 Treasury Management Reporting

The Authority is currently required to receive and approve, as a minimum, three main treasury reports each year, which incorporate a variety of policies, estimates and actuals.

- a. **Prudential and treasury indicators and treasury strategy** (this report) - The first, and most important report is forward looking and covers: -
 - the capital plans, (including prudential indicators)
 - a minimum revenue provision (MRP) policy, (how residual capital expenditure is charged to revenue over time)
 - the Treasury Management Strategy, (how the investments and borrowings are to be organised), including treasury indicators; and
 - an Annual Investment Strategy, (the parameters on how investments are to be managed)

- b. **A mid-year treasury management report** – This is primarily a progress report and will update members on the capital position, amending prudential indicators as necessary, and whether any policies require revision. In addition, this Authority will receive quarterly update reports.

- c. **An annual treasury report** – This is a backward-looking review document and provides details of a selection of actual prudential and treasury indicators and actual treasury operations compared to the estimates within the strategy.

Scrutiny

The above reports are required to be adequately scrutinised before being recommended to the Full Council. This role is undertaken by the Cabinet.

Quarterly reports – In addition to the three major reports detailed above, from 2023/24 quarterly reporting (end of June/end of December) is also required. However, these additional reports do not have to be reported to Full Council/Board but do require to be adequately scrutinised. This role is undertaken by the Cabinet. (The reports, specifically, should comprise updated Treasury/Prudential Indicators.)

1.3 Treasury Management Strategy for 2025/26

The strategy for 2025/26 covers two main areas:

Capital issues

- the capital expenditure plans and the associated prudential indicators
- the minimum revenue provision (MRP) policy

Treasury management issues

- the current treasury position
- treasury indicators which limit the treasury risk and activities of the Authority
- prospects for interest rates
- the borrowing strategy
- policy on borrowing in advance of need
- debt rescheduling
- the investment strategy
- creditworthiness policy; and
- the policy on use of external service providers

These elements cover the requirements of the Local Government Act 2003, DLUHC Investment Guidance, DLUHC MRP Guidance, the CIPFA Prudential Code and the CIPFA Treasury Management Code.

1.4 Training

The CIPFA Treasury Management Code requires the responsible officer to ensure that members with responsibility for treasury management receive adequate training in treasury management. This especially applies to members responsible for scrutiny.

Furthermore, pages 47 and 48 of the Code state that they expect “all organisations to have a formal and comprehensive knowledge and skills or training policy for the effective acquisition and retention of treasury management knowledge and skills for those responsible for management, delivery, governance and decision making.

The scale and nature of this will depend on the size and complexity of the organisation’s treasury management needs. Organisations should consider how to assess whether treasury management staff and council members have the required knowledge and skills to undertake their roles and whether they have been able to maintain those skills and keep them up to date.

As a minimum, authorities should carry out the following to monitor and review knowledge and skills:

- Record attendance at training and ensure action is taken where poor attendance is identified.
- Prepare tailored learning plans for treasury management officers and council members.
- Require treasury management officers and council members to undertake self-assessment against the required competencies (as set out in the schedule that may be adopted by the organisation).
- Have regular communication with officers and council members, encouraging them to highlight training needs on an ongoing basis.”

In further support of the revised training requirements, CIPFA’s Better Governance Forum and Treasury Management Network have produced a ‘self-assessment by members responsible for the scrutiny of treasury management’, which is available from the CIPFA website to download.

Member training took place in September 2023 and January 2024, further training will be arranged as required.

The training needs of treasury management officers are periodically reviewed.

A formal record of the training received by officers central to the Treasury function will be maintained by Director of Resources. Similarly, a formal record of the treasury management/capital finance training received by members will also be maintained by Member Services.

1.5 The Authority uses treasury management consultants, Link Treasury Services Limited as its external treasury management advisors.

The Authority recognises that responsibility for treasury management decisions remains with the organisation at all times and will ensure that undue reliance is not placed upon the services of our external service providers. All decisions will be undertaken with regards to all available information, including, but not solely, our treasury advisers.

It also recognises that there is value in employing external providers of treasury management services to acquire access to specialist skills and resources. The Authority will ensure that the terms of their appointment and the methods by which their value will be assessed are properly agreed and documented and subjected to regular review.

2. THE CAPITAL PRUDENTIAL INDICATORS 2025/26 – 2028/29

The Authority's capital expenditure plans are the key driver of treasury management activity. The output of the capital expenditure plans is reflected in the prudential indicators, which are designed to assist members' overview and confirm capital expenditure plans are prudent, affordable and sustainable.

2.1 Capital Expenditure and Financing

This prudential indicator is a summary of the Authority's capital expenditure plans, both those agreed previously, and those forming part of this budget cycle. Members are asked to approve the capital expenditure forecasts: -

Table 1

Capital Expenditure	2025/26 £'000	2026/27 £'000	2027/28 £'000	2028/29 £'000	Total Expenditure £'000
Operations & Communities	8,036	639	952	507	10,134
Corporate Services & Buildings	631	300	265	265	1,461
Housing	1,000	1,000	1,000	1,000	4,000
Regeneration	14,078	2,000	2,000	2,000	20,078
Climate change	527	-	-	-	527
Total	24,272	3,939	4,217	3,772	36,200

Other long-term liabilities - the above financing need excludes other long-term liabilities, such as PFI and leasing arrangements that already include borrowing instruments.

The table below summarises the above capital expenditure plans and how these plans are being financed by capital or revenue resources. Any shortfall of resources results in a funding borrowing need.

Table 2

Financing of Capital Expenditure	2025/26 £'000	2026/27 £'000	2027/28 £'000	2028/29 £'000	Total Expenditure £'000
Capital Receipts	1,600	100	300	104	2,104
Capital Grants	17,228	3,192	3,000	3,000	26,420
Capital Reserves	-	-	-	-	0
Earmarked Reserves	-	-	-	-	0
Total in-year resources	18,828	3,292	3,300	3,104	28,524
Net Financing need for year	5,444	647	917	668	7,676

2.2 The Authority's Borrowing Need (the Capital Financing Requirement)

The second prudential indicator is the Authority's Capital Financing Requirement (CFR). The CFR is simply the total historic outstanding capital expenditure which has not yet been paid for from either revenue or capital resources. It is essentially a measure of the Authority's indebtedness and so it's underlying borrowing need. Any capital expenditure above, which has not immediately been paid for through a revenue or capital resource, will increase the CFR.

The CFR does not increase indefinitely, as the minimum revenue provision (MRP) is a statutory annual revenue charge which broadly reduces the indebtedness in line with each asset's life, and so charges the economic consumption of capital assets as they are used.

The CFR includes any other long-term liabilities (e.g., finance leases). Whilst these increase the CFR, and therefore the Authority's borrowing requirement, these types of schemes already include a borrowing facility provided by the lease financier and so the Authority is not required to separately borrow for these schemes.

The Authority is asked to approve the CFR projections below:

Table 3

Capital Financing Requirement (CFR)	2025/26 Estimate £'000	2026/27 Estimate £'000	2027/28 Estimate £'000	2028/29 Estimate £'000
Opening CFR	18,796	23,448	23,269	23,356
Movement in CFR	4,652	(179)	87	(284)
Closing CFR	23,448	23,269	23,356	23,072
Movement in CFR is represented by				
Net Financing need for year	5,444	647	917	668
Less MRP repayments	792	826	830	952
Movement in CFR	4,652	(179)	87	(284)

The movement in CFR in 2025/26 is £5,652k, which includes the following projects:

- Rossendale Town Centres (LUF)
- Rawtenstall Gyratory (LUF)
- Operations Infrastructure

Table 4

External Borrowing Requirement.	2025/26 Estimate £'000	2026/27 Estimate £'000	2027/28 Estimate £'000	2028/29 Estimate £'000
Service Spend	3,117	647	917	668
Housing	-	-	-	-
Regeneration	2,327	-	-	-
Closing CFR	5,444	647	917	668

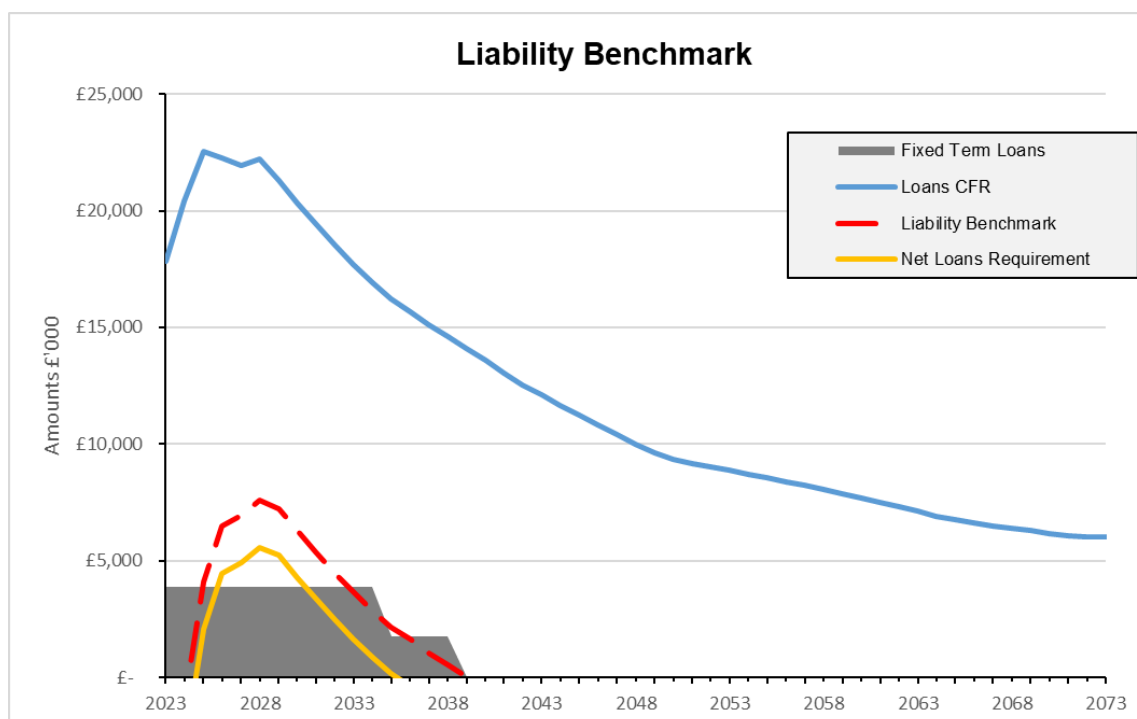
2.3 Liability Benchmark

The Authority is required to estimate and measure the Liability Benchmark (LB) for the forthcoming financial year and the following two financial years, as a minimum.

There are four components to the LB: -

1. **Existing loan debt outstanding:** the Authority's existing loans that are still outstanding in future years.
2. **Loans CFR:** this is calculated in accordance with the loans CFR definition in the Prudential Code and projected into the future based on approved prudential borrowing and planned MRP.
3. **Net loans requirement:** this will show the Authority's gross loan debt less treasury management investments at the last financial year-end, projected into the future and based on its approved prudential borrowing, planned MRP and any other major cash flows forecast.
4. **Liability benchmark** (or gross loans requirement): this equals net loans requirement plus short-term liquidity allowance.

Table 5



2.4 Core Funds and Expected Investment Balances

The application of resources (capital receipts, reserves etc.) to either finance capital expenditure or other budget decisions to support the revenue budget will have an ongoing impact on investments unless resources are supplemented each year from new sources (asset sales etc.). Detailed below are estimates of the year-end balances for each resource and anticipated day-to-day cash flow balances.

Table 6

	2025/26	2026/27	2027/28	2028/29
Year End Resources	Estimate	Estimate	Estimate	Estimate
	£000	£000	£000	£000
General Fund Balance	1,000	1,000	1,000	1,000
Earmarked Reserves	8,876	7,904	6,963	5,970
Capital Receipts	1,600	-	-	-
Government Grants Unapplied	500	250	100	100
Net to/(-)from reserves	(972)	(941)	(993)	(1,048)
Total Reserves	11,004	8,213	7,070	6,022
(Under)/Over Borrowing (see 3.1)	(13,069)	(12,826)	(12,604)	(12,296)
Expected Resources	(2,065)	(4,613)	(5,534)	(6,274)
Cash Balances	9,000	7,800	6,400	6,400
Working Capital*	11,065	12,413	11,934	12,674

*Working capital balances shown are estimated year-end; these may be higher mid-year

2.5 Minimum Revenue Provision (MRP) Policy Statement

Under Regulation 27 of the Local Authorities (Capital Finance and Accounting) (England) Regulations 2003, where the Authority has financed capital expenditure by borrowing it is required to make a provision each year through a revenue charge (MRP).

The Authority is required to calculate a prudent provision of MRP which ensures that the outstanding debt liability is repaid over a period that is reasonably commensurate with that over which the capital expenditure provides benefits. The MRP Guidance (2018) gives four ready-made options for calculating MRP, but the Authority can use any other reasonable basis that it can justify as prudent.

The MRP policy statement requires full council approval (or closest equivalent level) in advance of each financial year.

The Authority is recommended to approve the following MRP Statement:

For expenditure incurred before 1 April 2008 which forms part of supported capital expenditure, the MRP policy will be:

From 1 April 2008 for all unsupported borrowing the MRP policy will be:

- **Asset life method (annuity)** – MRP will be based on the estimated life of the assets;

Capital expenditure incurred during 2024/25 will not be subject to an MRP charge until 2025/26, or in the year after the asset becomes operational

The Authority will apply the asset life method for any expenditure capitalised under a Capitalisation Direction.

MRP in respect of assets acquired under Finance Leases or PFI will be charged at an amount equal to the principal element of the annual repayment.

For capital expenditure on loans to third parties where the principal element of the loan is being repaid in annual instalments, the capital receipts arising from the principal loan repayments will be used to reduce the CFR instead of MRP.

Where no principal repayment is made in a given year, MRP will be charged at a rate in line with the life of the assets funded by the loan.

MRP Overpayments - Under the MRP guidance, any charges made in excess of the statutory MRP can be made, known as voluntary revenue provision (VRP).

VRP can be reclaimed in later years if deemed necessary or prudent. In order for these amounts to be reclaimed for use in the budget, this policy must disclose the cumulative overpayment made each year.

Cumulative VRP overpayments made to date are £657k (made in 2018/19).

3. BORROWING

The capital expenditure plans set out in Section 2 provide details of the service activity of the Authority. The treasury management function ensures that the Authority's cash is organised in accordance with the relevant professional codes, so that sufficient cash is available to meet this service activity and the Authority's Capital Strategy. This will involve both the organisation of the cash flow and, where capital plans require, the organisation of appropriate borrowing facilities. The strategy covers the relevant treasury / prudential indicators, the current and projected debt positions, and the Annual Investment Strategy.

3.1 Current Portfolio Position

The overall treasury management portfolio as at 31/3/24 and for the position as at 31/12/2024 are shown below for both borrowing and investments.

Table 7

Treasury Portfolio	31/03/2024 Actual £000	31/12/2024 Current Portfolio £000
External Borrowing:		
Public Works Loan Board Loan 1	2,024	2,116
Public Works Loan Board Loan 2	1,550	1,600
Total External Borrowing	3,574	3,716
Treasury Investments:		
Nat West	1,403	652
Handelsbanken	-	-
Lloyds	-	2,000
LCC Call Account	1,000	2,000
DMO	5,500	6,500
Total Treasury Investments	7,903	11,152
Net Borrowing / (Lending)	(4,329)	(7,436)

The Authority's forward projections for borrowing are summarised below. The table shows the actual external debt, against the underlying capital borrowing need, (the Capital Financing Requirement - CFR), highlighting any over or under borrowing.

Table 8

Borrowing Position	2025/26 Estimate £000	2026/27 Estimate £000	2027/28 Estimate £000	2028/29 Estimate £000
Debt at 1st April	5,299	10,379	10,444	10,753
New Debt	5,444	647	917	668
Debt Repayments	(364)	(582)	(608)	(645)
Debt at 31st March	10,379	10,444	10,753	10,776
PWLB Loan 1	1,656	1,472	1,288	1,104
PWLB Loan 2	1,350	1,250	1,150	1,050
Estimated New Debt	7,373	7,721	8,314	8,622
Capital financing Requirement (C	23,448	23,269	23,356	23,072
Under / (over) Borrowing	13,069	12,826	12,604	12,296

Within the range of prudential indicators there are several key indicators to ensure that the Authority operates its activities within well-defined limits. One of these is that the Authority needs to ensure that its gross debt does not, except in the short-term, exceed the total of the CFR in the preceding year plus the estimates of any additional CFR for 2025/26 and the following two financial years. This allows some flexibility for limited early borrowing for future years but ensures that borrowing is not undertaken for revenue or speculative purposes.

The Director of Finance reports that the Authority complied with this prudential indicator in the current year and does not envisage difficulties for the future. This view takes account of current commitments, existing plans and the proposals in this budget report.

3.2 Treasury Indicators: Limits to Borrowing Activity

The Operational Boundary. This is the limit beyond which external debt is not normally expected to exceed. In most cases, this would be a similar figure to the CFR, but may be lower or higher depending on the levels of actual debt and the ability to fund under-borrowing by other cash resources.

Table 9

Operational Boundary	2025/26 £000	2026/27 £000	2027/28 £000	2028/29 £000
Total External Debt	24,400	24,300	24,400	24,100

The Authorised Limit for external debt. This is a key prudential indicator and represents a control on the maximum level of borrowing. This represents a legal limit beyond which external debt is prohibited, and this limit needs to be set or revised by the Full Council. It reflects the level of external debt which, while not desired, could be afforded in the short-term, but is not sustainable in the longer-term.

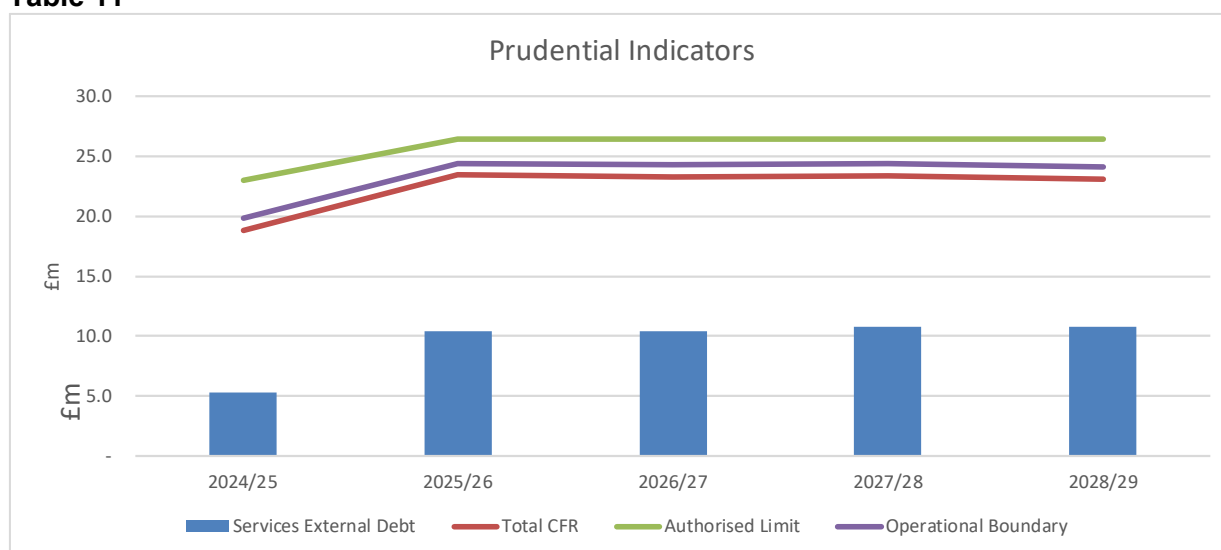
- This is the statutory limit determined under section 3 (1) of the Local Government Act 2003. The Government retains an option to control either the total of all local authority plans, or those of a specific authority, although this power has not yet been exercised.
- The Authority is asked to approve the following Authorised Limit:

Table 10

Authorised Limit	2025/26 £000	2026/27 £000	2027/28 £000	2028/29 £000
Total External Debt	26,400	26,400	26,400	26,400

- In graphical terms the relationship between the total CFR, the current external borrowing and the suggested authorised limits and operational boundaries can be shown below. The prudent level of future potential borrowing is clearly visible as the gap between the forecast CFR and the current and future estimated borrowing levels.

Table 11



3.3 Prospects for Interest Rates

The Authority has appointed Link Group as its treasury advisor and part of their service is to assist the Authority to formulate a view on interest rates. Link provided the following forecasts on 11 November 2024. These are forecasts for Bank Rate, average earnings and PWLB certainty rates, gilt yields plus 80 bps.

Link Group Interest Rate View	11.11.24												
	Dec-24	Mar-25	Jun-25	Sep-25	Dec-25	Mar-26	Jun-26	Sep-26	Dec-26	Mar-27	Jun-27	Sep-27	Dec-27
BANK RATE	4.75	4.50	4.25	4.00	4.00	3.75	3.75	3.75	3.50	3.50	3.50	3.50	3.50
3 month ave earnings	4.70	4.50	4.30	4.00	4.00	4.00	3.80	3.80	3.80	3.50	3.50	3.50	3.50
6 month ave earnings	4.70	4.40	4.20	3.90	3.90	3.90	3.80	3.80	3.80	3.50	3.50	3.50	3.50
12 month ave earnings	4.70	4.40	4.20	3.90	3.90	3.90	3.80	3.80	3.80	3.50	3.50	3.50	3.50
5 yr PWLB	5.00	4.90	4.80	4.60	4.50	4.50	4.40	4.30	4.20	4.10	4.00	4.00	3.90
10 yr PWLB	5.30	5.10	5.00	4.80	4.80	4.70	4.50	4.50	4.40	4.30	4.20	4.20	4.10
25 yr PWLB	5.60	5.50	5.40	5.30	5.20	5.10	5.00	4.90	4.80	4.70	4.60	4.50	4.50
50 yr PWLB	5.40	5.30	5.20	5.10	5.00	4.90	4.80	4.70	4.60	4.50	4.40	4.30	4.30

Additional notes by Link on this forecast table: -

- Following the 30 October Budget, the outcome of the US Presidential election on 6 November, and the 25bps Bank Rate cut undertaken by the Monetary Policy Committee (MPC) on 7 November, we have significantly revised our central forecasts for the first time since May. In summary, our Bank Rate forecast is now 50bps – 75bps higher than was previously the case, whilst our PWLB forecasts have been materially lifted to not only reflect our increased concerns around the future path of inflation, but also the increased level of Government borrowing over the term of the current Parliament.

- If we reflect on the 30 October Budget, our central case is that those policy announcements will be inflationary, at least in the near-term. The Office for Budgetary Responsibility and the Bank of England concur with that view. The latter have the CPI measure of inflation hitting 2.5% y/y by the end of 2024 and staying sticky until at least 2026. The Bank forecasts CPI to be 2.7% y/y (Q4 2025) and 2.2% (Q4 2026) before dropping back in 2027 to 1.8% y/y.
- The anticipated major investment in the public sector, according to the Bank, is expected to lift UK real GDP to 1.7% in 2025 before growth moderates in 2026 and 2027. The debate around whether the Government's policies lead to a material uptick in growth primarily focus on the logistics of fast-tracking planning permissions, identifying sufficient skilled labour to undertake a resurgence in building, and an increase in the employee participation rate within the economy.
- There are inherent risks to all the above. The worst-case scenario would see systemic blockages of planning permissions and the inability to identify and resource the additional workforce required to deliver large-scale IT, housing and infrastructure projects. This would lead to upside risks to inflation, an increased prospect of further Government borrowing & tax rises, and a tepid GDP performance.
- Our central view is that monetary policy is sufficiently tight at present to cater for some further moderate loosening, the extent of which, however, will continue to be data dependent. We forecast the next reduction in Bank Rate to be made in February and for a pattern to evolve whereby rate cuts are made quarterly and in keeping with the release of the Bank's Quarterly Monetary Policy Reports (February, May, August and November).
- Any movement below a 4% Bank Rate will, nonetheless, be very much dependent on inflation data in the second half of 2025. The fact that the November MPC rate cut decision saw a split vote of 8-1 confirms that there are already some concerns around inflation's stickiness, and with recent public sector wage increases beginning to funnel their way into headline average earnings data, the market will be looking very closely at those releases.
- Regarding our PWLB forecast, the short to medium part of the curve is forecast to remain elevated over the course of the next year, and the degree to which rates moderate will be tied to the arguments for further Bank Rate loosening or otherwise. The longer part of the curve will also be impacted by inflation factors, but there is also the additional concern that with other major developed economies such as the US and France looking to run large budget deficits there could be a glut of government debt issuance that investors will only agree to digest if the interest rates paid provide sufficient reward for that scenario.
- So far, we have made little mention of the US President election. Nonetheless, Donald Trump's victory paves the way for the introduction/extension of tariffs that could prove inflationary whilst the same could be said of further tax cuts and an expansion of the current US budget deficit. Invariably the direction of US Treasury yields in reaction to his core policies will, in all probability, impact UK gilt yields. So, there are domestic and international factors that could impact PWLB rates whilst, as a general comment, geo-political risks abound in Europe, the Middle East and Asia.
- Our revised PWLB rate forecasts below are based on the Certainty Rate (the standard rate minus 20 bps) which has been accessible to most authorities since 1 November 2012. Please note, the lower Housing Revenue Account (HRA) PWLB

rate started on 15 June 2023 for those authorities with an HRA (standard rate minus 60 bps).

Gilt yields and PWLB rates

The overall longer-run trend is for gilt yields and PWLB rates to fall back over the timeline of our forecasts, but the risks to our forecasts are to the upsides. Our target borrowing rates are set **two years forward** (as we expect rates to fall back) and the current PWLB (certainty) borrowing rates are set out below: -

PWLB debt	Current borrowing rate as at 11.11.24 p.m.	Target borrowing rate now (end of Q3 2026)	Target borrowing rate previous (end of Q3 2026)
5 years	5.02%	4.30%	3.90%
10 years	5.23%	4.50%	4.10%
25 years	5.66%	4.90%	4.40%
50 years	5.42%	4.70%	4.20%

Borrowing advice: Our long-term (beyond 10 years) forecast for Bank Rate has been increased to 3.25% (from 3%). As all PWLB certainty rates are currently significantly above this level, borrowing strategies will need to be reviewed in that context. Overall, better value can be obtained at the shorter end of the curve and short-dated fixed LA to LA monies should also be considered. Temporary borrowing rates will, generally, fall in line with Bank Rate cuts.

Our suggested budgeted earnings rates for investments up to about three months' duration in each financial year are set out below.

Average earnings in each year	Now	Previously
2024/25 (residual)	4.60%	4.25%
2025/26	4.10%	3.35%
2026/27	3.70%	3.10%
2027/28	3.50%	3.25%
2028/29	3.50%	3.25%
Years 6 to 10	3.50%	3.25%
Years 10+	3.50%	3.50%

We will continue to monitor economic and market developments as they unfold. Typically, we formally review our forecasts following the quarterly release of the Bank of England's Monetary Policy Report but will consider our position on an ad hoc basis as required.

Our interest rate forecast for Bank Rate is in steps of 25 bps, whereas PWLB forecasts have been rounded to the nearest 10 bps and are central forecasts within bands of + / - 25 bps. Naturally, we continue to monitor events and will update our forecasts as and when appropriate.

3.4 Borrowing Strategy

The Authority is currently maintaining an under-borrowed position. This means that the capital borrowing need, (the Capital Financing Requirement), has not been fully funded with loan debt as cash supporting the Authority's reserves, balances and cash flow has been used as a temporary measure. This strategy is prudent as medium and longer dated borrowing rates are expected to fall from their current levels, albeit only once prevailing inflation concerns are addressed by restrictive near-term monetary policy. That is, Bank Rate remains relatively elevated in 2025 even if some rate cuts arise.

Against this background and the risks within the economic forecast, caution will be adopted with the 2025/26 treasury operations. The Director of Finance will monitor interest rates in financial markets and adopt a pragmatic approach to changing circumstances:

- *if it was felt that there was a significant risk of a sharp FALL in borrowing rates, then borrowing will be postponed.*
- *if it was felt that there was a significant risk of a much sharper RISE in borrowing rates than that currently forecast, fixed rate funding will be drawn whilst interest rates are lower than they are projected to be in the next few years.*

Any decisions will be reported to the Cabinet at the next available opportunity.

3.5 Policy on Borrowing in Advance of Need

The Authority will not borrow more than or in advance of its needs purely in order to profit from the investment of the extra sums borrowed. Any decision to borrow in advance will be within forward approved Capital Financing Requirement estimates and will be considered carefully to ensure that value for money can be demonstrated and that the Authority can ensure the security of such funds.

3.6 Rescheduling

Rescheduling of current borrowing in our debt portfolio may be considered whilst premature redemption rates remain elevated but only if there is surplus cash available to facilitate any repayment, or rebalancing of the portfolio to provide more certainty is considered appropriate.

If rescheduling is to be undertaken, it will be reported to the *Cabinet*, at the earliest meeting following its action.

3.7 New Financial Institutions as a Source of Borrowing and / or Types of Borrowing

Currently the PWLB Certainty Rate is set at gilts + 80 basis points. However, consideration may still need to be given to sourcing funding from the following sources for the following reasons:

- Local authorities (primarily shorter dated maturities out to 3 years or so – generally still cheaper than the Certainty Rate).
- Financial institutions (primarily insurance companies and pension funds but also some banks, out of forward dates where the objective is to avoid a “cost of carry” or to achieve refinancing certainty over the next few years).

Our advisors will keep us informed as to the relative merits of each of these alternative funding sources.

3.8 Approved Sources of Long and Short-term Borrowing

On Balance Sheet	Fixed	Variable
PWLB	●	●
UK Municipal Bond Agency	●	●
Local Authorities	●	●
Banks	●	●
Pension Funds	●	●
Insurance Companies	●	●
UK Infrastructure Bank	●	●
Overdraft		●
Internal (capital receipts & revenue balances)	●	●
Finance Leases	●	●

4 ANNUAL INVESTMENT STRATEGY

4.1 Investment Policy – Management of Risk

The Department of Levelling Up, Housing and Communities (DLUHC - this was formerly the Ministry of Housing, Communities and Local Government (MHCLG)) and CIPFA have extended the meaning of ‘investments’ to include both financial and non-financial investments. This report deals solely with treasury (financial) investments, (as managed by the treasury management team). Non-financial investments, essentially the purchase of income yielding assets and service investments, are covered in the Capital Strategy, (a separate report).

The Council’s investment policy has regard to the following: -

- DLUHC’s Guidance on Local Government Investments (“the Guidance”)
- CIPFA Treasury Management in Public Services Code of Practice and Cross Sectoral Guidance Notes 2021 (“the Code”)
- CIPFA Treasury Management Guidance Notes 2021

The Council’s investment priorities will be security first, portfolio liquidity second and then yield (return). The Council will aim to achieve the optimum return (yield) on its investments commensurate with proper levels of security and liquidity and with regard to the Authority’s risk appetite.

In the current economic climate, it is considered appropriate to maintain a degree of liquidity to cover cash flow needs but to also consider “laddering” investments for periods up to 12 months with high credit rated financial institutions, whilst investment rates remain elevated, as well as wider range fund options.

The above guidance from the DLUHC and CIPFA places a high priority on the management of risk. This Authority has adopted a prudent approach to managing risk and defines its risk appetite by the following means: -

1. Minimum acceptable **credit criteria** are applied in order to generate a list of highly creditworthy counterparties. This also enables diversification and thus avoidance of concentration risk. The key ratings used to monitor counterparties are the short-term and long-term ratings.
2. **Other information:** ratings will not be the sole determinant of the quality of an institution; it is important to continually assess and monitor the financial sector on both a micro and macro basis and in relation to the economic and political environments in which institutions operate. The assessment will also take account of information that reflects the opinion of the markets. To achieve this consideration the Authority will engage with its advisors to maintain a monitor on market pricing such as “**credit default swaps**” and overlay that information on top of the credit ratings.
3. **Other information sources** used will include the financial press, share price and other such information pertaining to the financial sector in order to establish the most robust scrutiny process on the suitability of potential investment counterparties.
4. This Council has defined the list of **types of investment instruments** that the treasury management team are authorised to use. There are two lists in Appendix 5.4 under the categories of ‘specified’ and ‘non-specified’ investments.

Specified investments are those with a high level of credit quality and subject to a maturity limit of one year or have less than a year left to run to maturity, if originally they were classified as being non-specified investments solely due to the maturity period exceeding one year.

Non-specified investments are those with less high credit quality, may be for periods in excess of one year, and/or are more complex instruments which require greater consideration by members and officers before being authorised for use.

5. **Transaction limits** are set for each type of investment in 4.2.

However, this Authority will also pursue **value for money** in treasury management and will monitor the yield from investment income against appropriate benchmarks for investment performance, (see paragraph 4.5). Regular monitoring of investment performance will be carried out during the year.

Changes in risk management policy from last year.

The above criteria are unchanged from last year.

4.2 Creditworthiness Policy

The primary principle governing the Authority's investment criteria is the security of its investments, although the yield or return on the investment is also a key consideration. After this main principle, the Authority will ensure that: -

- It maintains a policy covering both the categories of investment types it will invest in, criteria for choosing investment counterparties with adequate security, and monitoring their security. This is set out in the specified and non-specified investment sections below; and
- It has sufficient liquidity in its investments. For this purpose, it will set out procedures for determining the maximum periods for which funds may prudently be committed. These procedures also apply to the Authority's prudential indicators covering the maximum principal sums invested.

The Director of Resources will maintain a counterparty list in compliance with the following criteria and will revise the criteria and submit them to Full Council for approval as necessary. These criteria are separate to that which determines which types of investment instrument are either specified or non-specified as it provides an overall pool of counterparties considered high quality which the Authority may use, rather than defining what types of investment instruments are to be used.

Credit rating information is supplied by Link Group, our treasury advisors, on all active counterparties that comply with the criteria below. Any counterparty failing to meet the criteria would be omitted from the counterparty (dealing) list. Any rating changes, rating Watches (notification of a likely change), rating Outlooks (notification of the longer-term bias outside the central rating view) are provided to officers almost immediately after they occur, and this information is considered before dealing. For instance, a negative rating Watch applying to a counterparty at the minimum Authority criteria will be suspended from use, with all others being reviewed in light of market conditions.

The criteria for providing a pool of high-quality investment counterparties, (both specified and non-specified investments) is:

- Banks 1 - good credit quality – the Authority will only use banks which:
 - i. are UK banks; and/or
 - ii. are non-UK and domiciled in a country which has a minimum sovereign Long-Term rating of AAA

and have, as a minimum, the following Fitch, Moody's and Standard & Poor's credit ratings (where rated):

- i. Short Term – F1
 - ii. Long Term – A
- Banks 2 – Part nationalised UK bank – Royal Bank of Scotland ring-fenced operations. This bank can be included provided they continue to be part nationalised or meet the ratings in Banks 1 above.
 - Banks 3 – The Authority's own banker for transactional purposes if the bank falls below the above criteria, although in this cash balances will be minimised in both monetary size and time invested.
 - Bank subsidiary and treasury operation -. The Authority will use these where the parent bank has provided an appropriate guarantee or has the necessary ratings outlined above.
 - Money Market Funds (MMFs) using only those with AAA long term rating backed up with lowest volatility rating Money Market Funds (MMFs)
 - UK Government (including gilts, Treasury Bills and the DMADF)
 - Local authorities, parish councils etc
 - Housing associations
 - Rossendale Leisure Trust
 - Other related parties (where a charge can be placed on land or equity to preserve the Councils right to resources)

Use of additional information other than credit ratings. Additional requirements under the Code require the Authority to supplement credit rating information. Whilst the above criteria rely primarily on the application of credit ratings to provide a pool of appropriate counterparties for officers to use, additional operational market information will be applied before making any specific investment decision from the agreed pool of counterparties. This additional market information (for example Credit Default Swaps, rating Watches/Outlooks) will be applied to compare the relative security of differing investment opportunities.

Time and monetary limits applying to investments. The time and monetary limits for institutions on the Authority's counterparty list are as follows (these will cover both specified and non-specified investments): -

Table 12

Investment Type / Minimum Credit Rating (Note 1)	Banks Unsecured (Note 2)	Banks Secured (Note 3)	Government (Note 4)
UK Government	n/a	n/a	£ Unlimited 5 years
UK Treasury Bills	n/a	n/a	£1m in Total for 6 months
UK Local Authorities	n/a	n/a	£8m each for periods of up to 1 year £8m each for overnight/call deposits
Investment Rated A-	£3m each for 6 months	£3m each for 1 year	n/a
Money Market Funds (Note 5)	£2m per Fund up to 6 months		
Registered Providers (Note 6)	£1m in total for 1 Year		
Any other organisation (Note 7)	£1.5m for maximum of 10 years		

Notes to Table 12

1. Credit rating: Investment limits are set by reference to the lowest published long-term credit rating from a selection of external rating agencies. However, investment decisions are never made solely based on credit ratings, and all other relevant factors including external advice will be taken into account.

2. Banks unsecured: Includes accounts, deposits, certificates of deposit and unsecured bonds with banks and building societies. These investments are subject to the risk of credit loss via a bail-in should the regulator determine that the bank is failing or likely to fail. See below for arrangements relating to operational bank accounts.

3. Banks secured: Includes covered bonds, reverse repurchase agreements and other collateralised arrangements with banks and building societies. These investments are secured on the bank's assets, which limits the potential losses in the unlikely event of insolvency, and means that they are exempt from bail-in. Where there is no investment specific credit rating, but the collateral upon which the investment is secured has a credit rating, the higher of the collateral credit rating and the counterparty credit rating will be used to determine cash and time limits.

4. Government: Includes loans, bonds and bills issued or guaranteed by national governments, regional and local authorities and multilateral development banks. These investments are not subject to bail-in, and there is generally a lower risk of insolvency. Investments with the UK Central Government may be made in unlimited amounts as a contingency in the event of a crisis.

5. Pooled Funds: These Funds are shares in diversified investment vehicles which invest in any of the investment types above (Notes 2 to 4), plus equity shares and property. These funds provide wide diversification, together with the services of a professional Fund Manager. The Money Market Funds offer same-day liquidity and very low volatility and are used as an alternative to instant access bank accounts. There is no sector limit applying to Money Market Funds although the Council will take care to diversify its liquid investments over a variety of providers to minimise risk.

6. Registered providers: These are longer term loans or bonds that are secured or guaranteed on the assets of Registered Providers of Social Housing. These bodies are highly regulated by the Homes and Communities Agency and are likely to receive government support if needed.

7. Other organisation: This is subject to an external credit assessment, specific advice from the Council's treasury management adviser and full Council approval.

Operational bank accounts: The Council's own bank account which is used for all of the Council's operational activities will have a minimum credit rating of BBB- and assets greater than £25 billion. The Bank of England has stated that in the event of failure, banks with assets greater than £25 billion are more likely to be bailed-in than made insolvent, increasing the chance of the Council maintaining operational continuity. The balances in the Council's own bank account will be up to a maximum of £8m, or 50% of the resources available at the time of investing, whichever is the larger.

The proposed criteria for specified and non-specified investments are shown in Appendix 5.4 for approval.

Creditworthiness

Significant levels of downgrades to Short and Long-Term credit ratings have not materialised since the crisis in March 2020. In the main, where they did change, any alterations were limited to Outlooks. Nonetheless, when setting minimum sovereign debt ratings, this Authority will not set a minimum rating for the UK

CDS prices

Although bank CDS prices, (these are market indicators of credit risk), spiked upwards during the autumn of 2022, they have returned to more average levels since then. However, sentiment can easily shift, so it will remain important to undertake continual monitoring of all aspects of risk and return in the current circumstances. Link monitor CDS prices as part of their creditworthiness service to local authorities and the Authority has access to this information via its Link-provided Passport portal.

4.3 Limits

Due care will be taken to consider the exposure of the Council's total investment portfolio to non-specified investments, countries, groups and sectors.

4.4 Investment Strategy

In-house funds. Investments will be made with reference to the core balance and cash flow requirements and the outlook for short-term interest rates (i.e., rates for investments up to 12 months). Greater returns are usually obtainable by investing for longer periods. The current shape of the yield curve suggests that is the case at present, but with Bank Rate having peaked in the second half of 2023 and having subsequently reduced so an agile investment strategy would be appropriate to optimise returns.

Accordingly, while most cash balances are required in order to manage the ups and downs of cash flow, where cash sums can be identified that could be invested for longer periods, the value to be obtained from longer-term investments will be carefully assessed.

Investment returns expectations.

The current forecast shown in paragraph 3.3, includes a forecast for Bank Rate to have peaked at 5.25% and anticipated to fall further.

The suggested budgeted investment earnings rates for returns on investments placed for periods up to about three months during each financial year are as follows: -

Table 13

Average earnings in each year	Link	RBC View
2024/25(residual)	4.60%	4.25%
2025/26	4.10%	3.35%
2026/27	3.70%	3.10%
2027/28	3.50%	3.25%
2028/29	3.50%	3.25%
Years 6 to 10	3.50%	3.25%
Years 10+	3.50%	3.50%

As there are so many variables at this time, caution must be exercised in respect of all interest rate forecasts.

For its cash flow generated balances, the Authority will seek to utilise its SIBA instant access and notice accounts, Money Market Funds and short-dated deposits, (overnight to 100 days), in order to benefit from the compounding of interest.

Investment treasury indicator and limit - total principal funds invested for greater than 365 days. These limits are set with regard to the Authority's liquidity requirements and to reduce the need for early sale of an investment and are based on the availability of funds after each year-end.

The Authority is asked to approve the following treasury indicator and limit: -

Table 14

Upper limit for principal sums invested for longer than 365 days			
£m	2025/26	2026/27	2027/28
Principal sums invested for longer than 365 days	£1.5m	£1.5m	£1.5m

4.5 Investment Performance / Risk Benchmarking

These benchmarks are simple guides to maximum risk, so they may be breached from time to time, depending on movements in interest rates and counterparty criteria. The purpose of the benchmark is that officers will monitor the current and trend position and amend the operational strategy to manage risk as conditions change. Any breach of the benchmarks will be reported, with supporting reasons in the mid-year or Annual Report.

- Security – the exposure to credit risk is monitored by measuring the average credit rating of its investment portfolio with a target rating of A-.
- Liquidity – the Authority will manage its cashflow so as not to go overdrawn.

- Yield – the benchmark for returns on investments is the Sterling Overnight Index Average (SONIA). Actual investment returns are monitored against budget.

4.6 End of Year Investment Report

At the end of the financial year, the Authority will report on its investment activity as part of its financial monitoring process.

5 APPENDICES

1. Prudential and treasury indicators
2. Interest rate forecasts
3. Economic background
4. Treasury management practice 1 – credit and counterparty risk management
5. Approved countries for investments
6. Treasury management scheme of delegation
7. The treasury management role of the section 151 officer

5.1 THE CAPITAL PRUDENTIAL AND TREASURY INDICATORS 2025/26 – 2028/29

The Authority's capital expenditure plans are the key driver of treasury management activity. The output of the capital expenditure

plans is reflected in the prudential indicators, which are designed to assist members' overview and confirm capital expenditure plans.

5.1.1 Capital Expenditure

Table 15

Capital Expenditure	2025/26 £'000	2026/27 £'000	2027/28 £'000	2028/29 £'000	Total Expenditure £'000
Operations & Communities	8,036	639	952	507	10,134
Corporate Services & Buildings	631	300	265	265	1,461
Housing	1,000	1,000	1,000	1,000	4,000
Regeneration	14,078	2,000	2,000	2,000	20,078
Climate change	527	-	-	-	527
Total	24,272	3,939	4,217	3,772	36,200

5.1.2 Affordability Prudential Indicators

The previous sections cover the overall capital and control of borrowing prudential indicators, but within this framework prudential indicators are required to assess the affordability of the capital investment plans. These provide an indication of the impact of the capital investment plans on the Authority's overall finances. The Authority is asked to approve the following indicators: -

Ratio of Financing Costs to Net Revenue Stream

This indicator identifies the trend in the cost of capital, (borrowing and other long-term obligation costs), against the net revenue stream.

Table 16

Ratio of financing costs to Net Revenue Stream	2025/26 Estimate £'000	2026/27 Estimate £'000	2027/28 Estimate £'000	2028/29 Estimate £'000
Financing Costs	1,000	1,255	1,260	1,389
Proportion of net revenue stream	8.67%	10.96%	10.78%	11.79%

The estimates of financing costs include current commitments and the proposals in this budget report.

5.1.3 Maturity Structure of Borrowing

Maturity structure of borrowing. These gross limits are set to reduce the Authority's exposure to large, fixed rate sums falling due for refinancing, and are required for upper and lower limits.

The Council is asked to approve the following treasury indicators and limits: -

Table 17

Maturity structure of fixed interest rate borrowing 2025/26		
	Lower	Upper
Under 12 months	0%	40%
12 months to 2 years	0%	50%
2 years to 5 years	0%	50%
5 years to 10 years	0%	50%
10 years and above	0%	100%
Maturity structure of variable interest rate borrowing 2025/26		
	Lower	Upper
Under 12 months	0%	10%
12 months to 2 years	0%	10%
2 years to 5 years	0%	10%
5 years to 10 years	0%	10%
10 years and above	0%	10%

5.1.4. Control of Interest Rate Exposure

Please see paragraphs 3.3, 3.4 and 4.4.

5.2 INTEREST RATE FORECASTS 2025-2028

Link Group Interest Rate View	11.11.24												
	Dec-24	Mar-25	Jun-25	Sep-25	Dec-25	Mar-26	Jun-26	Sep-26	Dec-26	Mar-27	Jun-27	Sep-27	Dec-27
BANK RATE	4.75	4.50	4.25	4.00	4.00	3.75	3.75	3.75	3.50	3.50	3.50	3.50	3.50
3 month ave earnings	4.70	4.50	4.30	4.00	4.00	4.00	3.80	3.80	3.80	3.50	3.50	3.50	3.50
6 month ave earnings	4.70	4.40	4.20	3.90	3.90	3.90	3.80	3.80	3.80	3.50	3.50	3.50	3.50
12 month ave earnings	4.70	4.40	4.20	3.90	3.90	3.90	3.80	3.80	3.80	3.50	3.50	3.50	3.50
5 yr PWLB	5.00	4.90	4.80	4.60	4.50	4.50	4.40	4.30	4.20	4.10	4.00	4.00	3.90
10 yr PWLB	5.30	5.10	5.00	4.80	4.80	4.70	4.50	4.50	4.40	4.30	4.20	4.20	4.10
25 yr PWLB	5.60	5.50	5.40	5.30	5.20	5.10	5.00	4.90	4.80	4.70	4.60	4.50	4.50
50 yr PWLB	5.40	5.30	5.20	5.10	5.00	4.90	4.80	4.70	4.60	4.50	4.40	4.30	4.30

PWLB forecasts are based on PWLB certainty rates.

5.3 ECONOMIC BACKGROUND

The third quarter of 2024 (July to September) saw:

- GDP growth stagnating in July following downwardly revised Q2 figures (0.5% q/q)
- A further easing in wage growth as the headline 3myy rate (including bonuses) fell from 4.6% in June to 4.0% in July;
- CPI inflation hitting its target in June before edging above it to 2.2% in July and August;
- Core CPI inflation increasing from 3.3% in July to 3.6% in August;
- The Bank of England initiating its easing cycle by lowering interest rates from 5.25% to 5.0% in August and holding them steady in its September meeting;
- 10-year gilt yields falling to 4.0% in September.

Over the aforementioned period, the economy's stagnation in June and July pointed more to a mild slowdown in UK GDP growth than a sudden drop back into a recession. However, in the interim period, to 12 December, arguably the biggest impact on the economy's performance has been the negative market sentiment in respect of the fallout from the Chancellor's Budget on 30 October.

If we reflect on the 30 October Budget, our central case is that those policy announcements will prove to be inflationary, at least in the near-term. The Office for Budgetary Responsibility and the Bank of England concur with that view. The latter have the CPI measure of inflation hitting 2.5% y/y by the end of 2024 and staying sticky until at least 2026. The Bank forecasts CPI to be elevated at 2.7% y/y (Q4 2025) before dropping back to sub-2% in 2027. Nonetheless, since the Budget, the October inflation print has shown the CPI measure of inflation bouncing up to 2.3% y/y with the prospect that it will be close to 3% by the end of the year before falling back slowly through 2025. The RPI measure has also increased significantly to 3.4% y/y.

How high inflation goes will primarily be determined by several key factors. First amongst those is that the major investment in the public sector, according to the Bank of England, will lift UK real GDP to 1.7% in 2025 before growth moderates in 2026 and 2027. The debate around whether the Government's policies lead to a material uptick in growth primarily focus on the logistics of fast-tracking planning permissions, identifying sufficient skilled labour to undertake a resurgence in building, and an increase in the employee participation rate within the economy.

There are inherent risks to all the above. The worst-case scenario would see systemic blockages of planning permissions and the inability to identify and resource the additional workforce required to deliver large-scale IT, housing and infrastructure projects. This would lead to upside risks to inflation, an increased prospect of further Government borrowing & tax rises in the June 2025 Spending Review (pushed back from the end of March), and a tepid GDP performance.

Regarding having a sufficiently large pool of flexible and healthy workers, the initial outlook does not look bright. Research from Capital Economics has alluded to an increase of some 500,000 construction workers being needed to provide any chance of the Government hitting its target of 300,000 new homes being built in each of the next five years (234,000 net additional dwellings in England in 2022/23). But the last time such an increase was needed, and construction employment is currently at a nine-year low, it took 12 years to get there (1996 to 2008). Also note, as of October 2024, job vacancies in the construction sector were still higher than at any time in the 20 years preceding the pandemic.

Currently, it also seems likely that net inward migration is set to fall, so there is likely to be a smaller pool of migrant workers available who, in the past, have filled the requirement for construction worker demand. The Government plans to heavily promote training schemes, particularly to the one million 16- to 24-year-olds who are neither in education nor work. But it is arguable as to whether the employee shortfall can be made up from this source in the requisite time, even if more do enter the workforce.

Against, this backdrop, there may be a near-term boost to inflation caused by a wave of public sector cash chasing the same construction providers over the course of the next year or so, whilst wages remain higher than the Bank currently forecasts because of general labour shortages, including in social care where Government accepts there is a 150,000 shortfall at present.

Unemployment stands at a low 4.3% (September), whilst wages are rising at 4.3% y/y (including bonuses) and 4.8% (excluding bonuses). The Bank would ideally like to see further wage moderation to underpin any further gradual relaxing of monetary policy. Indeed, over the next six months, the market is currently only pricing in Bank Rate reductions in February and May – which would see Bank Rate fall to 4.25% - but further cuts, thereafter, are highly likely to be even more data-dependent.

If we focus on borrowing, a term we are likely to hear throughout 2025 is “bond vigilante”. Essentially, this represents a generic term for when the market is ill at ease with the level of government borrowing and demands a higher return for holding debt issuance. In the UK, we do not need to go back too far to recall the negative market reaction to the Truss/Kwarteng budget of 2022. But long-term borrowing rates have already gradually moved back to those levels since their recent low point in the middle of September 2024. Of course, the UK is not alone in this respect. Concerns prevail as to what the size of the budget deficit will be in the US, following the election of Donald Trump as President, and in France there are on-going struggles to form a government to address a large budget deficit problem too. Throw into the mix the uncertain outcome to German elections, and there is plenty of bond investor concern to be seen.

Staying with the US, Donald Trump’s victory paves the way for the introduction/extension of tariffs that could prove inflationary whilst the same could be said of further tax cuts. Invariably the direction of US Treasury yields in reaction to his core policies will, in all probability, impact UK gilt yields. So, there are domestic and international factors that could impact PWLB rates whilst, as a general comment, geo-political risks continue to abound in Europe, the Middle East and Asia.

In the past month, the US Core CPI measure of inflation has indicated that inflation is still a concern (3.3% y/y, 0.3% m/m), as has the November Producer Prices Data (up 3.0 y/y v a market estimate of 2.6% y/y, 0.4% m/m v an estimate of 0.2% m/m) albeit probably insufficient to deter the FOMC from cutting US rates a further 0.25% at its December meeting. However, with Trump’s inauguration as President being held on 20 January, further rate reductions and their timing will very much be determined by his policy announcements and their implications for both inflation and Treasury issuance.

Looking at gilt movements in the first half of 2024/25, and you will note the 10-year gilt yield declined from 4.32% in May to 4.02% in August as the Bank’s August rate cut signalled the start of its loosening cycle. More recently, however, 10 year gilt yields have spiked back up to 4.35%.

The FTSE 100 reached a peak of 8,380 in the third quarter of 2024 (currently 8.304), but its performance is firmly in the shade of the US S&P500, which has breached the 6,000 threshold on several occasions recently, delivering returns upwards of 25% y/y. The catalyst for any further rally (or not) is likely to be the breadth of AI’s impact on business growth and performance.

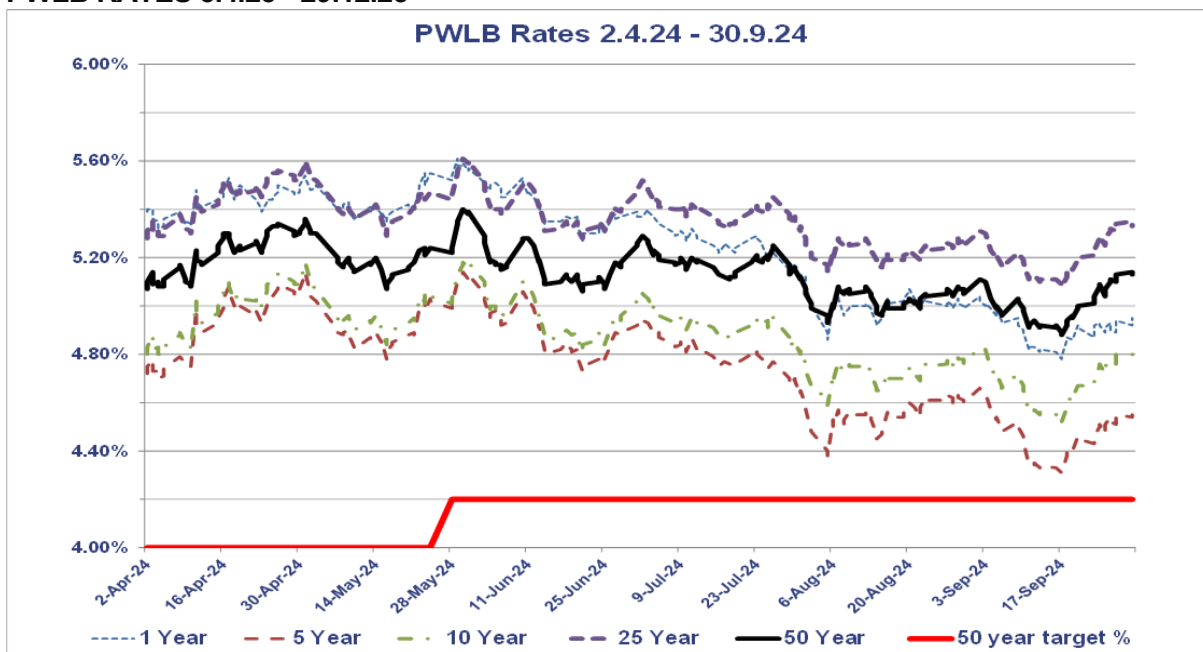
MPC meetings: 9 May, 20 June, 1 August, 19 September, 7 November 2024

- On 9 May, the Bank of England’s Monetary Policy Committee (MPC) voted 7-2 to keep Bank Rate at 5.25%. This outcome was repeated on 20th June.
- However, by the time of the August meeting, there was a 5-4 vote in place for rates to be cut by 25bps to 5%. However, subsequent speeches from MPC members have supported Governor Bailey’s tone with its emphasis on “gradual” reductions over time.
- Markets thought there may be an outside chance of a further Bank Rate reduction in September, following the 50bps cut by the FOMC, but this came to nothing.

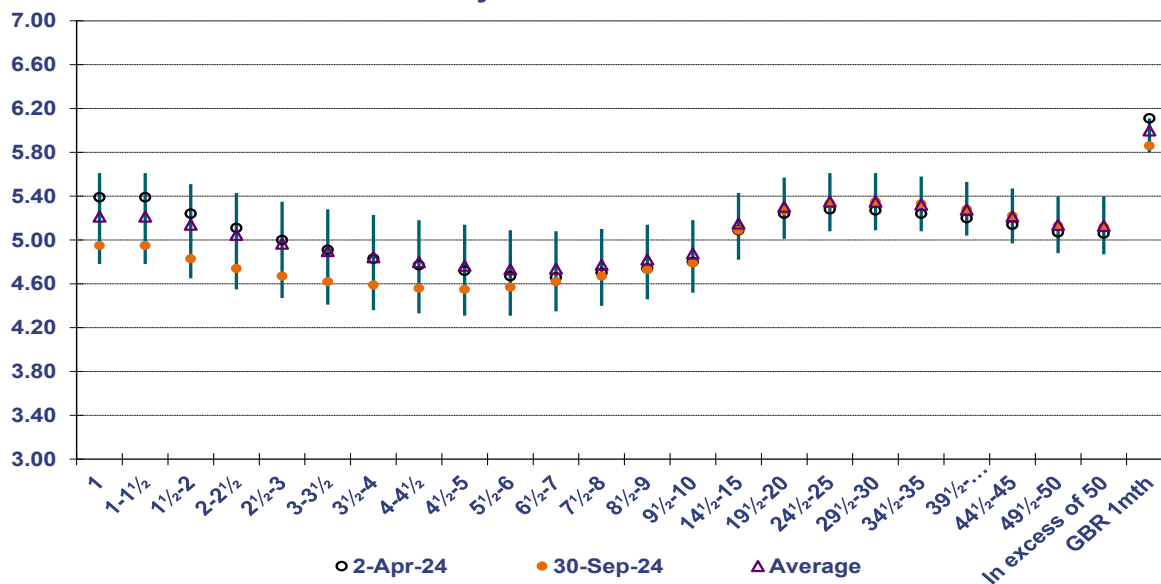
- On 7 November, Bank Rate was cut by 0.25% to 4.75%. The vote was 8-1 in favour of the cut but the language used by the MPC emphasised “gradual” reductions would be the way ahead with an emphasis on the inflation and employment data releases, as well as geo-political events.

In the chart below, despite a considerable gilt market rally in mid-September, rates started and finished the six-month period under review in broadly the same position.

PWLB RATES 3.4.23 - 29.12.23



PWLB Certainty Rate Variations 2.4.24 to 30.9.24



HIGH/LOW/AVERAGE PWLB RATES FOR 3.4.23 – 29.12.23

	1 Year	5 Year	10 Year	25 Year	50 Year
02/04/2024	5.39%	4.72%	4.80%	5.28%	5.07%
30/09/2024	4.95%	4.55%	4.79%	5.33%	5.13%
Low	4.78%	4.31%	4.52%	5.08%	4.88%
Low date	17/09/2024	17/09/2024	17/09/2024	17/09/2024	17/09/2024
High	5.61%	5.14%	5.18%	5.61%	5.40%
High date	29/05/2024	01/05/2024	01/05/2024	01/05/2024	01/05/2024
Average	5.21%	4.76%	4.88%	5.35%	5.14%
Spread	0.83%	0.83%	0.66%	0.53%	0.52%

5.4 TREASURY MANAGEMENT PRACTICE (TMP1) – CREDIT AND COUNTERPARTY RISK MANAGEMENT

The DLUHC issued Investment Guidance in 2018, and this forms the structure of the Authority's policy below. These guidelines do not apply to either trust funds or pension funds which operate under a different regulatory regime.

The key intention of the Guidance is to maintain the current requirement for local authorities to invest prudently, and that priority is given to security and liquidity before yield. In order to facilitate this objective, the Guidance requires this Authority to have regard to the CIPFA publication Treasury Management in the Public Services: Code of Practice and Cross-Sectoral Guidance Notes. This Council adopted the Code on 24/02/2010 and will apply its principles to all investment activity. In accordance with the Code, the Director of Finance has produced its treasury management practices (TMPs). This part, TMP 1(1), covering investment counterparty policy requires approval each year.

Annual Investment Strategy - The key requirements of both the Code and the investment guidance are for the Authority to set an Annual Investment Strategy, as part of its annual treasury strategy for the following year, covering the identification and approval of the following:

- The strategy guidelines for choosing and placing investments, particularly non-specified investments.
- The principles to be used to determine the maximum periods for which funds can be committed.
- Specified investments that the Authority will use. These are high security, and high liquidity investments in sterling and with a maturity of no more than a year.
- Non-specified investments, clarifying the greater risk implications, identifying the general types of investment that may be used and a limit to the overall amount of various categories that can be held at any time.

The investment policy proposed for the Authority is:

Strategy guidelines – The main strategy guidelines are contained in the body of the Treasury Management Strategy Statement.

Specified investments – These investments are sterling investments of not more than one-year maturity, or those which could be for a longer period but where the Authority has the right to be repaid within 12 months if it wishes. They also include investments which were originally classed as being non-specified investments, but which would have been classified as specified investments apart from originally being for a period longer than 12 months once the remaining period to maturity falls to under 12 months.

These are considered low risk assets where the possibility of loss of principal or investment income is small. These would include sterling investments which would not be defined as capital expenditure with: -

- The UK Government (such as the Debt Management Account deposit facility, UK Treasury Bills or a Gilt with less than one year to maturity).
- Supranational Bonds of less than one year's duration.
- A Local Authority, Housing Association, Parish Council or Community Council.
- Pooled investment vehicles (such as Money Market Funds) that have been awarded a high credit rating by a credit rating agency e.g., Standard and Poor's, Moody's and/or Fitch rating agencies.
- A body that is considered of a high credit quality (such as a bank or building society). This category covers bodies with a minimum Short-Term rating of A- (or the equivalent) as rated by Standard and Poor's, Moody's and / or Fitch rating agencies.

In accordance with the Code, the Authority has set out additional criteria to limit the time and the amount of monies which will be invested in these bodies. These criteria are set out in 4.2 above.

Non-specified investments – are any other type of investment (i.e., not defined as specified above). These are set out in 4.2 above.

NOTE 1. This Authority will seek further advice on the appropriateness and associated risks with investments in these categories.

The monitoring of investment counterparties - The credit rating of counterparties will be monitored regularly. The Authority receives credit rating information (changes, rating watches and rating outlooks) from Link as and when ratings change, and counterparties are checked promptly. On occasion ratings may be downgraded when an investment has already been made. The criteria used are such that a minor downgrading should not affect the full receipt of the principal and interest. Any counterparty failing to meet the criteria will be removed from the list immediately by the Director of Finance, and if required new counterparties which meet the criteria will be added to the list.

5.5 APPROVED COUNTRIES FOR INVESTMENTS

This list is based on those countries which have sovereign ratings of AA- or higher, (we show the lowest rating from Fitch, Moody's and S&P) and also, (except - at the time of writing - for Hong Kong and Luxembourg), have banks operating in sterling markets which have credit ratings of green or above in the Link creditworthiness service.

Based on lowest available rating

AAA

- Australia
- Denmark
- Germany
- Netherlands
- Norway
- Singapore
- Sweden
- Switzerland

AA+

- Canada
- Finland
- U.S.A.

AA

- Abu Dhabi (UAE)

AA-

- Belgium
- France
- Qatar
- **U.K.**

5.6 TREASURY MANAGEMENT SCHEME OF DELEGATION

(i) Full Council

- receiving and reviewing reports on treasury management policies, practices and activities;
- approval of annual strategy.

(ii) Cabinet

- approval of/amendments to the Council's adopted clauses, treasury management policy statement and treasury management practices;
- budget consideration and approval;
- approval of the division of responsibilities;
- receiving and reviewing regular monitoring reports and acting on recommendations;
- approving the selection of external service providers and agreeing terms of appointment.

(iii) Audit & Accounts Committee

- reviewing the treasury management policy and procedures and making recommendations to the responsible body.

5.7 THE TREASURY MANAGEMENT ROLE OF THE SECTION 151 OFFICER

The S151 (responsible) officer

- recommending clauses, treasury management policy/practices for approval, reviewing the same regularly, and monitoring compliance;
- submitting regular treasury management policy reports;
- submitting budgets and budget variations;
- receiving and reviewing management information reports;
- reviewing the performance of the treasury management function;
- ensuring the adequacy of treasury management resources and skills, and the effective division of responsibilities within the treasury management function;
- ensuring the adequacy of internal audit, and liaising with external audit;
- recommending the appointment of external service providers.
- preparation of a Capital Strategy to include capital expenditure, capital financing, non-financial investments and treasury management, with a long-term timeframe.
- ensuring that the Capital Strategy is prudent, sustainable, affordable and in the long term and provides value for money
- ensuring that due diligence has been carried out on all treasury and non-financial investments and is in accordance with the risk appetite of the authority
- ensure that the Council has appropriate legal powers to undertake expenditure on non-financial assets and their financing
- ensuring the proportionality of all investments so that the Council does not undertake a level of investing which exposes the Council to an excessive level of risk compared to its financial resources
- ensuring that an adequate governance process is in place for the approval, monitoring and ongoing risk management of all non-financial investments and long-term liabilities
- provision to members of a schedule of all non-treasury investments including material investments in subsidiaries, joint ventures, loans and financial guarantees
- ensuring that members are adequately informed and understand the risk exposures taken on by the Council
- ensuring that the Council has adequate expertise, either in house or externally provided, to carry out the above
- creation of Treasury Management Practices which specifically deal with how non treasury investments will be carried out and managed, to include the following: -
 - *Risk management (TMP1 and schedules), including investment and risk management criteria for any material non-treasury investment portfolios;*
 - *Performance measurement and management (TMP2 and schedules), including methodology and criteria for assessing the performance and success of non-treasury investments;*
 - *Decision making, governance and organisation (TMP5 and schedules), including a statement of the governance requirements for decision making in relation to non-treasury investments; and arrangements to ensure that appropriate professional due diligence is carried out to support decision making;*

- *Reporting and management information (TMP6 and schedules), including where and how often monitoring reports are taken;*
- *Training and qualifications (TMP10 and schedules), including how the relevant knowledge and skills in relation to non-treasury investments will be arranged.*

The Deputy S151 Officer (being the Head of Financial Services)

In the absence of the S151 Officer, the Deputy S151 Officer will take over the responsibilities noted above.

The Finance Officer (Exchequer Services)

- Transfer of funds between the Council's approved call and notice accounts.

Authorised Signatories

The following posts have been designated as those authorised to act as bank signatories for the Council:

- Director of Resources (S151 Officer)
- Head of Financial Services (Deputy S151 Officer)
- Finance Officer (Exchequer)
- Principal Accountant
- Accountant (x2)
- Accounts Technician

Treasury Management Policy and Practises
2025/26

Contents

		Page
Treasury Management Policy Statement		3
 Treasury Management Practices.....		
TMP 1	Treasury risk management	5
TMP 2	Performance measurement.....	15
TMP 3	Decision–making and analysis	17
TMP 4	Approved instruments, methods and techniques	19
TMP 5	Organisation, clarity and segregation of responsibilities, and dealing arrangements	21
TMP 6	Reporting requirements and management information arrangements	25
TMP 7	Budgeting, accounting and audit arrangements	28
TMP 8	Cash and cash flow management	29
TMP 9	Money laundering	30
TMP 10	Training and qualifications	32
TMP 11	Use of external service providers.....	33
TMP 12	Corporate governance	35
IMP	Investment management practices notes investments that are not part of treasury management activity	36

Responsible Section/Team	Finance	Version/Status	2025/26
Responsible Author	Director of Resources	Report submitted to	Full Council
Date Amended now	Feb 2025	Meeting date	March 2025
Due for Review	Feb 2026	Page	2

The Treasury Management Policy Statement

The treasury management policy statement

This council defines its treasury management activities as:

1. The management of the organisation's borrowing, investments and cash flows, its banking, money market and capital market transactions; the effective control of the risks associated with those activities; and the pursuit of optimum performance consistent with those risks.
2. This organisation regards the successful identification, monitoring and control of risk to be the prime criteria by which the effectiveness of its treasury management activities will be measured. Accordingly, the analysis and reporting of treasury management activities will focus on their risk implications for the organisation, and any financial instruments entered into to manage these risks.
3. This council acknowledges that effective treasury management will provide support towards the achievement of its business and service objectives. It is therefore committed to the principles of achieving value for money in treasury management, and to employing suitable comprehensive performance measurement techniques, within the context of effective risk management.

Clauses to be formally adopted

1. This Council will create and maintain, as the cornerstones for effective treasury management:
 - a Treasury Management Policy Statement (TMSS), stating the policies, objectives and approach to risk management of its treasury management activities
 - suitable Treasury Management Practices (TMPs), setting out the manner in which the organisation will seek to achieve those policies and objectives, and prescribing how it will manage and control those activities.
 - investment management practices (IMPs) for investments that are not for treasury management purposes.

The content of the policy statement, TMPs and IMPs will follow the recommendations contained in Sections 6, 7 and 8 of the CIPFA Treasury Management Code (the Code), subject only to amendment where necessary to reflect the particular circumstances of this organisation. Such amendments will not result in the organisation materially deviating from the Code's key principles.

2. This Council will receive reports on its treasury management policies, practices and activities, including, as a minimum, an annual strategy and plan in advance of the year, a mid-year review and an annual report after its close, in the form prescribed in its TMPs and IMPs.
3. This Council delegates responsibility for the implementation and regular monitoring of its treasury management policies and practices to Director of Resources, and for the

Responsible Section/Team	Finance	Version/Status	2025/26
Responsible Author	Director of Resources	Report submitted to	Full Council
Date last Amended	Feb 2025	Meeting date	March 2025
Due for Review	Feb 2026	Page	3

execution and administration of treasury management decisions to the Director of Resources, who will act in accordance with the organisation's policy statement and TMPs

4. This organisation nominates Director of Resources to be responsible for ensuring effective scrutiny of the treasury management strategy and policies.

Responsible Section/Team	Finance	Version/Status	2025/26
Responsible Author	Director of Resources	Report submitted to	Full Council
Date Amended now	Feb 2025	Meeting date	Mar 2025
Due for Review	Feb 2026	Page	4

TMP 1 RISK MANAGEMENT

The responsible officer (in the case of Rossendale Borough Council, The Director of Resources) will design, implement and monitor all arrangements for the identification, management and control of treasury management risk, will report at least annually on the adequacy/suitability thereof, and will report, as a matter of urgency, the circumstances of any actual or likely difficulty in achieving the organisation's objectives in this respect, all in accordance with the procedures set out in TMP6 Reporting requirements and management information arrangements. In respect of each of the following risks, the arrangements which seek to ensure compliance with these objectives are set out in the schedule to this document.

1. Credit and Counterparty Risk Management

Credit and counter-party risk is the risk of failure by a counterparty to meet its contractual obligations to the organisation under an investment, borrowing, capital project or partnership financing, particularly as a result of the counterparty's diminished creditworthiness, and the resulting detrimental effect on the organisation's capital or current (revenue) resources.

This organisation regards a key objective of its treasury management activities to be the security of the principal sums it invests. Accordingly, it will ensure that its counterparty lists and limits reflect a prudent attitude towards organisations with whom funds may be deposited, and will limit its investment activities to the instruments, methods and techniques referred to in TMP4 Approved Instruments Methods and Techniques and listed in the schedule to this document. It also recognises the need to have, and will therefore maintain, a formal counterparty policy in respect of those organisations from which it may borrow, or with whom it may enter into other financing arrangements.

The organisation's credit and counterparty policies should set out its policy and practices relating to environmental, social and governance (ESG) investment considerations. This is a developing area, and it is not implied that the organisation's ESG policy will currently include ESG scoring or other real-time ESG criteria at individual investment level.

1.1. Policy on the use of credit risk analysis techniques

- 1.1.1. The Council will use credit criteria in order to select creditworthy counterparties for placing investments with.
- 1.1.2. Credit ratings will be used as supplied from all three rating agencies - Fitch, Moodys and Standard & Poors
- 1.1.3. Treasury Management Consultants will provide regular updates of changes to all ratings relevant to the council.
- 1.1.4. The responsible officer will formulate suitable criteria for assessing and monitoring the credit risk of investment counterparties and shall construct a lending list comprising maturity periods, type, group, sector, country and counterparty limits. This organisation will use the Sector creditworthiness service based on using colours determined by minimum combinations of ratings to derive maturity limits as follows: -
 - Yellow 5 years
 - Purple 2 years

Responsible Section/Team	Finance	Version/Status	2025/26
Responsible Author	Director of Resources	Report submitted to	Full Council
Date Amended now	Feb 2025	Meeting date	Mar 2025
Due for Review	Feb 2026	Page	5

- Blue 1 year (only applies to nationalised or semi nationalised UK Banks)
- Orange 1 year
- Red 6 months
- Green 3 months
- No Colour not to be used

In addition, a credit default swap overlay is used as a further safeguard to give early warning of potential creditworthiness problems which may only belatedly lead to actual changes in credit ratings.

As this methodology is complex, readers are referred to the document produced by Link Asset Services “Treasury Solutions Credit Policy Guide December 2015” for a full explanation.

1.1.5. Credit ratings for individual counterparties can change at any time. The Director of Resources is responsible for applying approved credit rating criteria for selecting approved counterparties. Treasury management staff will add or delete counterparties to/from the approved counterparty list in line with the policy on criteria for selection of counterparties.

1.1.6. This organisation will not rely solely on credit ratings in order to select and monitor the creditworthiness of counterparties. In addition to credit ratings it will therefore use other sources of information including: -

- The quality financial press
- Market data
- Information on government support for banks and
- The credit ratings of that government support

1.1.7. Maximum maturity periods and amounts to be placed in different types of investment instrument are shown below. At present the maximum investment period for Specified Investments is less than 365 days.

1.1.8. Diversification: this organisation will avoid concentrations of lending and borrowing by adopting a policy of diversification. It will therefore use the following: -

Investment Type / Minimum Credit Rating (Note 1)	Banks Unsecured (Note 2)	Banks Secured (Note 3)	Government (Note 4)
UK Government	n/a	n/a	£ Unlimited 5 years
UK Treasury Bills	n/a	n/a	£1m in Total for 6 months
UK Local Authorities	n/a	n/a	£8m each for periods of up to 1 year £8m each for overnight/call deposits
Investment Rated A-	£3m each for 6 months	£3m each for 1 year	n/a
Money Market Funds (Note 5)	£2m per Fund up to 6 months		
Registered Providers (Note 6)	£1m in total for 1 Year		
Any other organisation (Note 7)	£1.5m for maximum of 10 years		

Responsible Section/Team	Finance	Version/Status	2025/26
Responsible Author	Director of Resources	Report submitted to	Full Council
Date Amended now	Feb 2025	Meeting date	Mar 2025
Due for Review	Feb 2026	Page	6

Notes

1. *Credit rating: Investment limits are set by reference to the lowest published long-term credit rating from a selection of external rating agencies. However, investment decisions are never made solely based on credit ratings, and all other relevant factors including external advice will be taken into account.*
2. *Banks unsecured: Includes accounts, deposits, certificates of deposit and unsecured bonds with banks and building societies. These investments are subject to the risk of credit loss via a bail-in should the regulator determine that the bank is failing or likely to fail. See below for arrangements relating to operational bank accounts.*
3. *Banks secured: Includes covered bonds, reverse repurchase agreements and other collateralised arrangements with banks and building societies. These investments are secured on the bank's assets, which limits the potential losses in the unlikely event of insolvency, and means that they are exempt from bail-in. Where there is no investment specific credit rating, but the collateral upon which the investment is secured has a credit rating, the higher of the collateral credit rating and the counterparty credit rating will be used to determine cash and time limits.*
4. *Government: Includes loans, bonds and bills issued or guaranteed by national governments, regional and local authorities and multilateral development banks. These investments are not subject to bail-in, and there is generally a lower risk of insolvency. Investments with the UK Central Government may be made in unlimited amounts as a contingency in the event of a crisis.*
5. *Pooled Funds: These Funds are shares in diversified investment vehicles which invest in any of the investment types above (Notes 2 to 4), plus equity shares and property. These funds provide wide diversification, together with the services of a professional Fund Manager. The Money Market Funds offer same-day liquidity and very low volatility and are used as an alternative to instant access bank accounts. There is no sector limit applying to Money Market Funds although the Council will take care to diversify its liquid investments over a variety of providers to minimise risk.*
6. *Registered providers: These are longer term loans or bonds that are secured or guaranteed on the assets of Registered Providers of Social Housing. These bodies are highly regulated by the Homes and Communities Agency and are likely to receive government support if needed.*
7. *Other organisation: This is subject to an external credit assessment, specific advice from the Council's treasury management adviser and full Council approval.*
 - **Operational bank accounts:** The Council's own bank account which is used for all of the Council's operational activities will have a minimum credit rating of BBB- and assets greater than £25 billion. The Bank of England has stated that in the event of failure, banks with assets greater than £25 billion are more likely to be bailed-in than made insolvent, increasing the chance of the Council maintaining operational continuity. The balances in the Council's own bank account will be up to a maximum of £5m, or 50% of the resources available at the time of investing, whichever is the larger.

Responsible Section/Team	Finance	Version/Status	2025/26
Responsible Author	Director of Resources	Report submitted to	Full Council
Date Amended now	Feb 2025	Meeting date	Mar 2025
Due for Review	Feb 2026	Page	7

- Country limits – normally, a minimum sovereign rating of AAA is required for an institution to be placed on our approved lending list. However, UK banks will be considered regardless of the UK’s sovereign rating at the time of investment.

1.1.9. Investments will not be made with counterparties that do not have a credit rating in their own right, other than in the case of Non-specified Investments where the counterparty is one of the Council’s related parties and where a charge can be placed on land or equity in order to preserve the Council’s rights to its resources.

1.1.10. The definition of ‘high credit quality’ in order to determine what are specified investments as opposed to non specified investments which do not have high credit ratings is set out at the end of TMP1 in schedule 1.

1.1.11. Should the Council ever begin to use **external fund manager(s)** they will adhere to the counterparty credit criteria and maximum individual limits set by the Council; however, it is understood that fund manager(s) may use a subset of the counterparty list so derived.

1.2 Liquidity Risk Management

This is the risk that cash will not be available when it is needed, that ineffective management of liquidity creates additional unbudgeted costs, and that the organisation’s business/service objectives will be thereby compromised.

This organisation will ensure it has adequate though not excessive cash resources, borrowing arrangements, overdraft or standby facilities to enable it at all times to have the level of funds available to it which are necessary for the achievement of its business/service objectives. This organisation will only borrow in advance of need where there is a clear business case for doing so and will only do so for the current capital programme or to finance future debt maturities.

1.2.1. Amounts of approved minimum cash balances and short-term investments

The Finance Officers shall seek to minimise the balance held in the Council’s main bank accounts at the close of each working day. The use of alternative call accounts and short-term notice accounts (under 90 days) shall be used in order to achieve this aim.

1.2.2. Details of:

a. Standby facilities

At the end of each financial day the balance in the Council’s current account is automatically transferred to/from the Special Business Investment Account (SIBA) to maximise the interest available on the Council’s operational bank accounts. In practice the current account and the SIBA account are now operated as one account. Individual daily debit balances on the current account are not treated as an overdraft.

The Council also maintain one or more on-call, and notice accounts up to 90 days with other banks. These accounts are used for reserve cash balances which may be required without notice. Such instant access is possible, but would lead to some loss of interest commensurate with the notice period waived.

Responsible Section/Team	Finance	Version/Status	2025/26
Responsible Author	Director of Resources	Report submitted to	Full Council
Date Amended now	Feb 2025	Meeting date	March 2025
Due for Review	Feb 2026	Page	8

- b. Bank overdraft arrangements
Previous overdraft facilities have now ceased due to the sweeping action described above and following the bank imposing an arrangement fee for overdrafts on the SIBA account.
- c. Short-term borrowing facilities
The Council accesses temporary loans through approved brokers on the London money market. The approved operational borrowing limit for short term debt in 2025/26 is £14.7m.
- d. Insurance/guarantee facilities
There are no specific insurance or guarantee facilities as the above arrangements are regarded as being adequate to cover all unforeseen occurrences.

1.3 Interest Rate Risk Management

The risk that fluctuations in the levels of interest rates create an unexpected or unbudgeted burden on the organisation's finances, against which the organisation has failed to protect itself adequately.

This organisation will manage its exposure to fluctuations in interest rates with a view to containing its interest costs, or securing its interest revenues, in accordance with the amounts provided in its budgetary arrangements as amended in accordance with TMP6 Reporting requirements and management information arrangements.

It will achieve this by the prudent use of its approved financing and investment instruments, methods and techniques, primarily to create stability and certainty of costs and revenues, but at the same time retaining a sufficient degree of flexibility to take advantage of unexpected, potentially advantageous changes in the level or structure of interest rates. This should be the subject to the consideration and, if required, approval of any policy or budgetary implications.

1.3.1 Policies concerning the use of instruments for interest rate management.

- a. forward dealing
Consideration will be given to dealing from forward periods dependent upon market conditions.
- b. callable deposits (England and Wales only)
The Council may use callable deposits as part as of its Annual Investment Strategy (AIS), which now forms part of the Annual Treasury Management Strategy Statement. The credit criteria and maximum periods are set out in the Schedule of Specified and Non Specified Investments appended to the AIS.

1.4 Exchange Rate Risk Management

The risk that fluctuations in foreign exchange rates create an unexpected or unbudgeted burden on the organisation's finances, against which the organisation has failed to protect itself adequately.

The Council will manage its exposure to fluctuations in exchange rates so as to minimise any detrimental impact on its budgeted income/expenditure levels.

Responsible Section/Team	Finance	Version/Status	2025/26
Responsible Author	Director of Resources	Report submitted to	Full Council
Date Amended now	Feb 2025	Meeting date	March 2025
Due for Review	Feb 2026	Page	9

1.5 Refinancing Risk Management

The risk that maturing borrowings, capital projects or partnership financings cannot be refinanced on terms that reflect the provisions made by the organisation for those refinancing, both capital and current (revenue), and/or that the terms are inconsistent with prevailing market conditions at the time.

This organisation will ensure that its borrowing, private financing and partnership arrangements are negotiated, structured and documented, and the maturity profile of the monies so raised are managed, with a view to obtaining offer terms for renewal or refinancing, if required, which are competitive and as favourable to the organisation as can reasonably be achieved in the light of market conditions prevailing at the time.

The Council will actively manage its relationships with its counterparties in these transactions in such a manner as to secure this objective, and will avoid overreliance on any one source of funding if this might jeopardise achievement of the above.

1.5.1. Debt/Other Capital Financing, Maturity Profiling, Policies and Practices

The Council will establish through its Prudential and Treasury Indicators the amount of debt maturing in any year/period.

Any debt rescheduling will be considered when the difference between the refinancing rate and the redemption rate is most advantageous and the situation will be continually monitored in order to take advantage of any perceived anomalies in the yield curve. The reasons for any rescheduling to take place will include:

- a) the generation of cash savings at minimum risk;
- b) to reduce the average interest rate;
- c) to amend the maturity profile and /or the balance of volatility of the debt portfolio.

Rescheduling will be reported to the Cabinet at the meeting immediately following its action.

1.5.2. Projected Capital Investment Requirements

The Finance Manager will prepare a three year plan for capital expenditure for the Council. The capital plan will be used to prepare a three year revenue budget for all forms of financing charges. In addition, the responsible officer will draw up a capital strategy report which will give a longer term view.

The definition of capital expenditure and long term liabilities used in the Code will follow recommended accounting practice as per the Code of Practice on Local Authority Accounting.

1.5.3 Policy Concerning Limits on Affordability and Revenue Consequences of Capital Financing

In considering the affordability of its capital plans, the Council will consider all the resources currently available/estimated for the future together with the totality of its capital plans, revenue income and revenue expenditure forecasts for the forthcoming year and the two following years and the impact these will have on council tax. It will also take into account affordability in the longer term beyond this three year period.

The Council will use the definitions provided in the Prudential Code for borrowing, capital expenditure, capital financing requirement, debt, financing costs, investments, net borrowing, net revenue stream, other long term liabilities.

Responsible Section/Team	Finance	Version/Status	2025/26
Responsible Author	Director of Resources	Report submitted to	Full Council
Date Amended now	Feb 2025	Meeting date	March 2025
Due for Review	Feb 2026	Page	10

1.6 Legal and Regulatory Risk Management

The risk that the organisation itself, or an organisation with which it is dealing in its treasury management activities, fails to act in accordance with its legal powers or regulatory requirements, and that the organisation suffers losses accordingly.

This organisation will ensure that all of its treasury management activities comply with its statutory powers and regulatory requirements. It will demonstrate such compliance, if required to do so, to all parties with whom it deals in such activities. In framing its credit and counterparty policy under TMP1[1] credit and counterparty risk management, it will ensure that there is evidence of counterparties' powers, authority and compliance in respect of the transactions they may affect with the organisation, particularly with regard to duty of care and fees charged.

This organisation recognises that future legislative or regulatory changes may impact on its treasury management activities and, so far as it is reasonably able to do so, will seek to minimise the risk of these impacting adversely on the organisation.

1.6.1. References to Relevant Statutes and Regulations

The treasury management activities of the Council shall comply fully with legal statute, guidance, Codes of Practice and the regulations of the Council, and as amended during the period of the Treasury Management Strategy Statement (TMSS). These include but are not limited to:

- Local Government Finance Act 1988 section 114 – duty on the responsible officer to issue a report if the Council is likely to get into a financially unviable position.
- Requirement to set a balanced budget - Local Government Finance Act 1992 section 32 for billing authorities and section 43 for major precepting authorities.
- Local Government Act 2003
- S.I. 2003 No.2938 Local Government Act 2003 (Commencement No.1 and Transitional Provisions and Savings) Order 2003 13.11.03
- S.I. 2003 No.3146 Local Authorities (Capital Finance and Accounting) (England) Regulations 2003 and associated commentary 10.12.03
- S.I. 2004 No.533 Local Authorities (Capital Finance) (Consequential, Transitional and Savings Provisions) Order 2004 8.3.04
- S.I. 2004 No.534 Local Authorities (Capital Finance and Accounting) (Amendment) (England) Regulations 2004 8.3.04
- S.I. 2004 no. 3055 The Local Authorities (Capital Finance and Accounting) (Amendment) (England) (No. 2) Regulations 2004
- S.I. 2006 no. 521 Local Authorities (Capital Finance and Accounting) (Amendment) (England) Regulations 2006
- S.I. 2007 no. 573 Local Authorities (Capital Finance and Accounting) (Amendment) (England) Regulations 2007
- Local Government and Public Involvement in Health Act 2007 s238(2) – power to issue guidance; to be used re: MRP
- S.I. 2008 no. 414 Local Authorities (Capital Finance and Accounting) (Amendment) (England) Regulations 2008
- S.I. 2009 no. 321 Local Authorities (Capital Finance and Accounting) (Amendment) (England) Regulations 2009
- S.I. 2009 no. 2272 The Local Authorities (Capital Finance And Accounting) (England) (Amendment) (No.2) Regulations 2009
- S.I. 2009 no. 3093 The Local Government Pension Fund Scheme (Management and Investment of Funds) Regulations 2009

Responsible Section/Team	Finance	Version/Status	2025/26
Responsible Author	Director of Resources	Report submitted to	Full Council
Date Amended now	Feb 2025	Meeting date	March 2025
Due for Review	Feb 2026	Page	11

- S.I. 2010 no. 454 (Capital Finance and Accounting) (Amendment) (England) Regulations 2010
- Localism Act 2011
- S.I. 2012 no. 265 Local Authorities (Capital Finance and Accounting) (England) (Amendment) Regulations 2012
- S.I. 2012 No. 711 The Local Authorities (Capital Finance and Accounting) (England) (Amendment) (No. 2) Regulations 2012
- S.I. 2012 No. 1324 The Local Authorities (Capital Finance and Accounting) (England) (Amendment) (No.3) Regulations 2012
- S.I. 2012 No. 2269 The Local Authorities (Capital Finance and Accounting) (England) (Amendment) (No. 4) Regulations 2012
- S.I. 2013 no. 476 The Local Authorities (Capital Finance and Accounting) (England) (Amendment) Regulations 2013
- S.I. 2015 no. 234 Accounts and Audit Regulations 2015

Guidance and codes of practice

- CIPFA's Treasury Management Codes of Practice and Guidance Notes 2021,
- CIPFA Prudential Code for Capital Finance in Local Authorities 2021
- CIPFA Local Authority Capital Accounting 2019
- CIPFA Standard of Professional Ethics 2018
- The Good Governance Standard for Public Services 2004
- LAAP/CIPFA Bulletins
- IFRS - Code of Practice on Local Authority Accounting in the United Kingdom: A Statement of recommended Practice
- PWLB circulars on Lending Policy
- The Non-Investment Products Code (NIPS) - (formerly known as The London Code of Conduct) for principals and broking firms in the wholesale markets.
- Financial Conduct Authority's Code of Market Conduct
- The Council's Standing Orders relating to Contracts
- The Council's Financial Regulations
- The Council's Scheme of Delegated Functions

1.6.2 Procedures for Evidencing the Council's Powers/Authorities to Counterparties

The Council's powers to borrow and invest are contained in legislation.

Investing: Local Government Act 2003, section 12

Borrowing: Local Government Act 2003, section 1

In addition, it will make available on request the following the scheme of delegation of treasury management activities contained in Treasury Management Strategy which states

- which officers carry out these duties
- which officers are the authorised signatories

Required Information on Counterparties

Lending shall only be made to counterparties on the Approved Lending list. This list has been compiled using advice from the Council's treasury advisers based upon credit ratings supplied by Fitch, Moodys and Standard & Poors. Lending can also be made to one of the Council's related parties or subsidiaries.

1.6.3 Statement on the Council's Political Risks and Management of Same

The Director of Resources shall take appropriate action with the Council, the Chief Executive Officer and the Leader of the Council to respond to and manage appropriately political risks such as change of majority group, leadership in the Council, change of Government etc.

Responsible Section/Team	Finance	Version/Status	2025/26
Responsible Author	Director of Resources	Report submitted to	Full Council
Date Amended now	Feb 2025	Meeting date	March 2025
Due for Review	Feb 2026	Page	12

1.6.4 Monitoring Officer

It is the duty of the monitoring officer to ensure that the treasury management activities of the Council are lawful.

1.6.5. Director of Resources

The Director of Resources is the (s.151) Officer. The duty of this officer is to ensure that the financial affairs of the Council are conducted in a prudent manner and to make a report to the Council if he has concerns as to the financial prudence of its actions or its expected financial position.

1.7 Fraud, Error and Corruption, and Contingency Management

The risk that the Council fails to identify the circumstances in which it may be exposed to the risk of loss through fraud, error, corruption or other eventualities in its treasury management dealings, and fails to employ suitable systems and procedures and maintain effective contingency management arrangements to these ends. It includes the area of risk commonly referred to as operational risk.

This Council will ensure that it has identified the circumstances which may expose it to the risk of loss through fraud, error, corruption or other eventualities in its treasury management dealings. Accordingly, it will employ suitable systems and procedures, and will maintain effective contingency management arrangements, to these ends.

The Council will therefore:-

- a) Seek to ensure an adequate division of responsibilities and maintenance at all times of an adequate level of internal check which minimises such risks.
- b) Fully document all its treasury management activities so that there can be no possible confusion as to what proper procedures are.
- c) Staff will not be allowed to take up treasury management activities until they have had proper training in procedures and are then subject to an adequate and appropriate level of supervision.
- d) Records will be maintained of all treasury management transactions so that there is a full audit trail and evidence of the appropriate checks being carried out.

1.7.1. Details of Systems and Procedures to be Followed, Including Internet Services

Authority

- The Scheme of Delegation to Officers sets out the delegation of duties to officers.
- All loans and investments are negotiated by the responsible officer or authorised persons.
- Loan procedures are defined in the Financial Regulations section of the Council's Constitution.

Procedures

- The electronic banking procedures include internet access to the Council's bank accounts for both downloading statements and entering one-off same-day transactions. The electronic authorisation of transactions through chip and pin cards and passwords follows the same pattern of required signatories as paper transactions do (i.e. one signature up to £5,000 and two signatures for transactions

Responsible Section/Team	Finance	Version/Status	2025/26
Responsible Author	Director of Resources	Report submitted to	Full Council
Date Amended now	Feb 2025	Meeting date	March 2025
Due for Review	Feb 2026	Page	13

over £5,000).

- Autopay online is the system used by the Council for the transfer of payment and collection files to the BACs processing centre. BACs collection and payment files are generated by the payroll, creditors, benefits and revenues software systems and transferred through a secure internet portal by the authorised signatories. Files must be generated, approved and sent by two different people.
- Full details of operational procedures are maintained by the Finance Officer (Exchequer Services).

Investment and borrowing transactions

- A detailed register of all loans and investments is maintained by the Finance Officer (Exchequer Services). A written acknowledgement of each deal is sent promptly to the lending or borrowing institution where transactions are done directly with the organisation.
- Written confirmation is received and checked against the dealer's records for the transaction.
- Any discrepancies are immediately reported to the Director of Resources for resolution.
- All transactions placed through brokers are confirmed by a broker note showing details of the loan arranged. Written confirmation is received and checked against the dealer's records for the transaction. Any discrepancies are immediately reported to the Director of Resources for resolution.

Regularity and security

- Lending is only made to institutions on the Approved List of Counterparties.
- All loans raised, and repayments made, go directly to and from the bank account of approved counterparties.
- Counterparty limits are set for every institution that the Council invests with.
- Brokers have a list of named officials authorised to agree deals.
- There is a separation of duties in the section between dealers and the checking and authorisation of all deals.
- The Council's bank holds a list of Council officials who are authorised signatories for treasury management transactions.
- Payments can only be authorised in a formal letter by an authorised signatory, the list of signatories having previously been agreed with the current provider of our banking services.
- The NatWest Bankline system can only be accessed by a password and online payments require chip and pin authorisation from one or more of the bank signatories (two for payments over £5,000).
- There is adequate insurance cover for employees involved in loans management and accounting.

Checks

- The bank reconciliation is carried out monthly from the bank statement to the financial ledger.
- A debt charge/investment income listing is produced every month when a review is undertaken against the budget for interest earnings and debt costs.

Responsible Section/Team	Finance	Version/Status	2025/26
Responsible Author	Director of Resources	Report submitted to	Full Council
Date Amended now	Feb 2025	Meeting date	March 2025
Due for Review	Feb 2026	Page	14

Calculations

- The calculation of repayment of principal and interest notified by the lender or borrower is checked for accuracy against the amount calculated by the Finance Officer (Exchequer Services). This is used to check the amount paid to lenders.
- Average weighted capital loans fund interest rates and debt management expenses are calculated monthly using information from the financial ledger.
- These interest and expense rates are then used to calculate the principal, interest and debt management expense charges to the General Fund.

1.7.2. Emergency and Contingency Planning Arrangements Disaster Recovery Plan.

The Council's main Business Continuity Plan includes a detailed section covering the essential financial systems and procedures, including banking, payments and revenue collection. All members of the treasury management team are familiar with this plan and new members will be briefed on it. The plan is reviewed and updated at regular intervals with both paper and electronic copies being available.

All computer files are backed up on the server to enable files to be accessed from remote sites.

1.7.3. Insurance Cover Details

Fidelity Insurance

The Council has 'Fidelity' insurance cover with Zurich Municipal which covers the loss of cash by fraud or dishonesty of employees. This cover is limited to £5m for any one event with an excess of £5k for any one event.

Professional Indemnity Insurance

The Council also has an 'Officials Indemnity' insurance policy with Zurich Municipal which covers loss to the Council from the actions and advice of its officers which are negligent and without due care. This cover is limited to £5m for any one event with an excess of £5k for any one event.

1.8 Market Risk Management

The risk that, through adverse market fluctuations in the value of the principal sums an organisation borrows and invests, its stated treasury management policies and objectives are compromised, against which effects it has failed to protect itself adequately.

This organisation will seek to ensure that its stated treasury management policies and objectives will not be compromised by adverse market fluctuations in the value of the principal sums it invests, and will accordingly seek to protect itself from the effects of such fluctuations.

1.8.1. Details of Approved Procedures and Limits for Controlling Exposure to Investments whose Capital Value May Fluctuate (Gilts, CDs, Etc.)

These are controlled through setting limits on investment instruments where the principal value can fluctuate. The limits are determined and set through the Annual Investment Strategy (which now forms part of the Annual Treasury Management Strategy Statement).

Responsible Section/Team	Finance	Version/Status	2025/26
Responsible Author	Director of Resources	Report submitted to	Full Council
Date Amended now	Feb 2025	Meeting date	March 2025
Due for Review	Feb 2026	Page	15

TMP 2 PERFORMANCE MEASUREMENT

2.1 Evaluation and Review of Treasury Management Decisions

The Council has a number of approaches to evaluating treasury management decisions:

- a. monthly reviews carried out by the Director of Resources and Head of Financial Services, reported as part of the regular financial monitoring reports to Cabinet.
- b. weekly review reports from our treasury management consultants detailing current markets, forecasts and model portfolio returns.
- c. annual review of performance and strategy with our treasury management consultants.
- d. comparative reviews with neighbouring authorities.

2.1.2 Reviews with our treasury management consultants

The Director of Resources meets with our consultants every 12 months to review the performance of the investment and debt portfolios. Ad-hoc reviews are conducted by arrangement as outlined at 2.3.4.

2.1.3 Annual Review after the end of the financial year

In addition to the regular financial monitoring reports to Cabinet, the end of March out-turn report includes an annual treasury management report which reviews the performance of the debt and investment portfolios. This report contains the following:

- a. total debt and investments at the beginning and close of the financial year and average interest rates
- b. borrowing strategy for the year compared to actual strategy
- c. investment strategy for the year compared to actual strategy
- d. explanations for variance between original strategies and actual
- e. debt rescheduling done in the year
- f. actual borrowing and investment rates available through the year
- g. comparison of return on investments to the investment benchmark
- h. compliance with Prudential and Treasury Indicators

2.1.4 Comparative reviews

When data becomes available, comparative reviews are undertaken to see how the performance of the authority on debt and investments compares to other authorities with similar size portfolios (but allowing for the fact that Prudential and Treasury Indicators are locally set). Data can be sourced from: -

- CIPFA Treasury Management statistics published each year for the last complete financial year
- Neighbouring Lancashire authorities
- Link Asset Services model portfolio

Responsible Section/Team	Finance	Version/Status	2025/26
Responsible Author	Director of Resources	Report submitted to	Full Council
Date Amended now	Feb 2025	Meeting date	March 2025
Due for Review	Feb 2026	Page	16

2.2 Benchmarks and Calculation Methodology:

2.2.1 Debt management

- Average rate on all external debt
- Average period to maturity of external debt
- Average period to maturity of new loans in previous year

2.2.2 Investment

The performance of investment earnings will be measured against the following benchmarks: -

Link Asset Services model portfolio

- *Weighted average rate of return*
- *Weighted average maturity*

Performance may also be measured against other local authority funds with similar benchmarks and parameters managed by other fund managers.

2.3 Policy concerning methods for testing Value for Money in Treasury Management

2.3.1 Frequency and processes for tendering

Tenders are normally awarded on a five-year basis. The process for awarding contracts will be in line with the Council's Contract Standing Orders.

2.3.2 Banking services

The Council's banking arrangements are to be subject to competitive tender unless it is considered that there will be changes in the volume of transactions in the foreseeable future which renders a shorter period appropriate.

2.3.3 Money-broking services

The Council may use money broking services in order to make deposits or to borrow, and will establish charges for all services prior to using them.

2.3.4 Consultants'/advisers' services

This Council's policy is not to appoint full-time professional treasury management consultants (Link Asset Services advise on an ad hoc basis, alongside automated updates).

2.3.5 Policy on External Managers (Other than relating to Superannuation Funds)

The Council's policy is not to appoint external investment fund managers.

Responsible Section/Team	Finance	Version/Status	2025/26
Responsible Author	Director of Resources	Report submitted to	Full Council
Date Amended now	Feb 2025	Meeting date	March 2025
Due for Review	Feb 2026	Page	17

TMP 3 DECISION-MAKING AND ANALYSIS

3.1 Funding, Borrowing, Lending, and New Instruments/Techniques:

3.1.1 Records to be kept

The following records will be retained:-

- Daily and monthly cash balance forecasts
- Brokers' confirmations for investment and temporary borrowing transactions
- Confirmations from borrowing /lending institutions where deals are done directly
- PWLB loan confirmations
- PWLB debt portfolio schedules.
- Certificates for market loans, local bonds and other loans
- Contract notes received from fund manager(s)
- Fund manager(s) valuation statements (if applicable)

3.1.2 Processes to be pursued

- Cash flow analysis.
- Debt and investment maturity analysis
- Ledger reconciliation
- Review of opportunities for debt restructuring (if applicable)
- Review of borrowing requirement to finance capital expenditure (and other forms of financing where those offer value for money)
- Performance information (e.g. monitoring of actual against budget for debt charges, interest earned, debt management; also monitoring of average pool rate, investment returns, etc).

3.1.3 Issues to be addressed

3.1.3.1. In respect of every treasury management decision made the Council will:

- a) Above all, be clear about the nature and extent of the risks to which the Council may become exposed
- b) Be certain about the legality of the decision reached and the nature of the transaction, and that all authorities to proceed have been obtained
- c) Be content that the documentation is adequate both to deliver the Council's objectives and protect the Council's interests, and to deliver good housekeeping
- d) Ensure that third parties are judged satisfactory in the context of the Council's creditworthiness policies, and that limits have not been exceeded
- e) Be content that the terms of any transactions have been fully checked against the market, and have been found to be competitive.

Responsible Section/Team	Finance	Version/Status	2025/26
Responsible Author	Director of Resources	Report submitted to	Full Council
Date Amended now	Feb 2025	Meeting date	March 2025
Due for Review	Feb 2026	Page	18

3.1.3.2 In respect of borrowing and other funding decisions, the Council will:

- a) consider the ongoing revenue liabilities created, and the implications for the organisation's future plans and budgets
- b) evaluate the economic and market factors that might influence the manner and timing of any decision to fund
- c) consider the merits and demerits of alternative forms of funding, including funding from revenue, leasing and private partnerships
- d) consider the alternative interest rate bases available, the most appropriate periods to fund and repayment profiles to use and, if relevant, the opportunities for foreign currency funding.

3.1.3.3 In respect of investment decisions, the Council will:

- a) consider the optimum period, in the light of cash flow availability and prevailing market conditions;
- b) consider the alternative investment products and techniques available, especially the implications of using any which may expose the Council to changes in the value of its capital;
- c) in the case of investments outside the banking sector the Council will consider the appropriate level of asset security, such as Land Registry charges, local Land Charges, or holding asset deeds.

Responsible Section/Team	Finance	Version/Status	2025/26
Responsible Author	Director of Resources	Report submitted to	Full Council
Date Amended now	Feb 2025	Meeting date	March 2025
Due for Review	Feb 2026	Page	19

TMP 4 APPROVED INSTRUMENTS, METHODS AND TECHNIQUES

4.1 Approved Activities of the Treasury Management Operation

- borrowing
- lending
- debt repayment and rescheduling
- consideration, approval and use of new financial instruments and treasury management techniques
- managing the underlying risk associated with the Council's capital financing and surplus funds activities
- managing cash flow
- banking activities
- the use of external fund managers (other than Pension Fund)
- leasing

4.2 Approved Instruments for Investments

Refer to the Treasury Management Strategy.

4.3 Approved Techniques

- Forward dealing
- The use of structured products such as callable deposits

4.4 Approved Methods and Sources of Raising Capital Finance

Finance will only be raised in accordance with the Local Government Act 2003 and within this limit the Council has a number of approved methods and sources of raising capital finance. These are:

On Balance Sheet	Fixed	Variable
PWLB	●	●
Market (long-term)	●	●
Market (temporary)	●	●
Market (LOBOs)	●	●
Local temporary	●	●
Local Bonds	●	
Overdraft		●
Internal (capital receipts & revenue balances)	●	●
Leasing	●	●
Deferred Purchase	●	●

Other Methods of Financing

- Government and EC Capital Grants
- Lottery monies
- PFI/PPP

Responsible Section/Team	Finance	Version/Status	2025/26
Responsible Author	Director of Resources	Report submitted to	Full Council
Date Amended now	Feb 2025	Meeting date	March 2025
Due for Review	Feb 2026	Page	20

Borrowing will only be done in Sterling. All forms of funding will be considered dependent on the prevailing economic climate, regulations and local considerations. The responsible officer has delegated powers in accordance with Financial Regulations, Standing Orders, the Scheme of Delegation to Officers Policy and the Treasury Management Strategy to take the most appropriate form of borrowing from the approved sources.

4.5 Investment Limits

The Treasury Management Strategy Statement sets out the limits and the guidelines for use of each type of investment instrument.

4.6 Borrowing Limits

See the Treasury Management Strategy Statement and Prudential and Treasury Indicators.

Responsible Section/Team	Finance	Version/Status	2025/26
Responsible Author	Director of Resources	Report submitted to	Full Council
Date Amended now	Feb 2025	Meeting date	March 2025
Due for Review	Feb 2026	Page	21

TMP 5 Organisation, Clarity and Segregation of Responsibilities, and Dealing Arrangements

5.1 Allocation of responsibilities

(i) Full Council

- receiving and reviewing reports on treasury management policies, practices and activities
- approval of annual treasury management strategy
- approval of capital strategy and capital programme
- approval of annual revenue budget

(ii) Cabinet

- recommendation of amendments to the organisation's adopted clauses, treasury management policy statement and treasury management practices
- budget consideration and recommendations
- approval of the division of responsibilities
- receiving and reviewing regular monitoring reports and acting on recommendations
- approving the selection of external service providers and agreeing terms of appointment
- reviewing the treasury management policy and procedures

5.2 Principles and Practices Concerning Segregation of Duties

5.2.1 The following duties must be undertaken by separate officers: -

Dealing	Negotiation and approval of deal. Receipt and checking of brokers confirmation note against loans diary. Reconciliation of cash control account. Bank reconciliation
Accounting Entry	Production of transfer note. Processing of accounting entry
Authorisation/Payment of Deal	Entry onto system. Approval and payment.

Responsible Section/Team	Finance	Version/Status	2025/26
Responsible Author	Director of Resources	Report submitted to	Full Council
Date Amended now	Feb 2025	Meeting date	March 2025
Due for Review	Feb 2026	Page	22

5.3 Treasury Management Organisation Chart

Director of Resources

|

Head of Financial Services

|

Finance Officer
(Exchequer Services)

5.4 Statement of the treasury management duties/responsibilities of each treasury post

5.4.1. The responsible officer

The responsible officer is the person charged with professional responsibility for the treasury management function and in this Council is the Director of Resources (This post is also the S151 officer.) This officer will carry out the following duties: -

- a) recommending clauses, treasury management policy/practices for approval, reviewing the same regularly, and monitoring compliance
- b) submitting regular treasury management policy reports
- c) submitting budgets and budget variations
- d) receiving and reviewing management information reports
- e) reviewing the performance of the treasury management function
- f) ensuring the adequacy of treasury management resources and skills, and the effective division of responsibilities within the treasury management function
- g) ensuring the adequacy of internal audit, and liaising with external audit
- h) recommending the appointment of external service providers.
- i) The responsible officer has delegated powers through this policy to take the most appropriate form of borrowing from the approved sources, and to make the most appropriate form of investments in approved instruments.
- j) The responsible officer may delegate his power to borrow and invest to members of his staff, principally the Head of Financial Services, to act as temporary cover for leave/sickness. All transactions must be authorised by at least two of the bank signatories as approved in the Treasury Management Strategy Appendix 5.6.
- k) The responsible officer will ensure that Treasury Management Policy is adhered to, and if not will bring the matter to the attention of elected members as soon as possible.
- l) Prior to entering into any capital financing, lending or investment transaction, it is the responsibility of the responsible officer to be satisfied, by reference to the Council's legal department and external advisors as appropriate, that the proposed transaction does not breach any statute, external regulation or the Council's Financial Regulations
- m) It is also the responsibility of the responsible officer to ensure that the Council complies with the requirements of The Non Investment Products Code (formerly known as The London Code of Conduct) for principals and broking firms in the wholesale markets.

Responsible Section/Team	Finance	Version/Status	2025/26
Responsible Author	Director of Resources	Report submitted to	Full Council
Date Amended now	Feb 2025	Meeting date	March 2025
Due for Review	Feb 2026	Page	23

5.4.2. Head of Financial Services (Deputy S151 officer)

The responsibilities of this post will be: -

- a) duties as delegated by the responsible officer in accordance with 5.4.1 (j)
- b) execution of transactions in accordance with good governance arrangements and adequate segregation – (second signatory)
- c) oversight and review of forecast cash balances to inform treasury management decision making.

5.4.3. Finance Officer (Exchequer Services)

The responsibilities of this post will be: -

- a) execution of transactions
- b) adherence to agreed policies and practices on a day-to-day basis
- c) maintaining relationships with counterparties and external service providers
- d) supervising treasury management staff
- e) monitoring performance on a day-to-day basis
- f) submitting management information reports to the responsible officer
- g) identifying and recommending opportunities for improved practices

5.4.4. The Head of the Paid Service – the Chief Executive

The responsibilities of this post will be: -

- a) Ensuring that the system is specified and implemented
- b) Ensuring that the responsible officer reports regularly to Full Council and Cabinet on treasury policy, activity and performance.

5.4.5. The Monitoring Officer

The responsibilities of this post will be: -

- a) Ensuring compliance by the responsible officer with the treasury management policy statement and treasury management practices and that they comply with the law.
- b) Being satisfied that any proposal to vary treasury policy or practice complies with law or any code of practice.
- c) Giving advice to the responsible officer when advice is sought.

5.4.6. Internal Audit

The responsibilities of Internal Audit will be: -

- a) Reviewing compliance with approved policy and treasury management practices.
- b) Reviewing division of duties and operational practice.
- c) Assessing value for money from treasury activities.
- d) Undertaking probity audit of treasury function.

5.5 Absence Cover Arrangements

The Head of Financial Services is also the deputy S151 Officer. The Head of Financial Services will also ensure that cover is available for the Finance Officer (Exchequer Services) and other treasury management officers as necessary.

If and when this organisation intends, as a result of lack of resources or other circumstances, to depart from these principles, the responsible officer will ensure that the reasons are properly reported in accordance with TMP6 Reporting requirements

Responsible Section/Team	Finance	Version/Status	2025/26
Responsible Author	Director of Resources	Report submitted to	Full Council
Date Amended now	Feb 2025	Meeting date	March 2025
Due for Review	Feb 2026	Page	24

and management information arrangements and the implications properly considered and evaluated.

5.6 Dealing Limits

The following posts are authorised to deal:

- The Director of Resources: limited to investments and loans of £5m per transaction. Amounts in excess of this limit should be by Scheme of Delegation.

5.7 Policy on Brokers' Services

It is this Council's policy to rotate business between brokers.

5.8 Policy on Taping of Conversations

It is not this Council's policy to tape brokers conversations.

5.9 Direct Dealing Practices

The Council will consider dealing direct with counterparties if it is appropriate and the Council believes that better terms will be available. At present, most deals are arranged by this method. There are certain types of accounts and facilities, however, where direct dealing is required, as follows;

- Business Reserve Accounts:
- Call Accounts:
- Money Market Funds.

5.10 Settlement Transmission Procedures

A formal letter signed by an agreed bank signatory setting out each transaction must be sent to the local authority's bankers where preliminary instructions have been given by telephone. For payments a transfer will be made through BACs or CHAPs to be completed by the appropriate bank deadlines in place that day.

5.11 Documentation Requirements

For each deal undertaken a record should be prepared giving details of dealer, amount, period, counterparty, interest rate, dealing date, payment date(s), broker.

5.12 Arrangements Concerning the Management of Third-Party Funds.

The Council does not currently manage any third-party funds. Trust funds are now held and administered by the Community Foundation for Lancashire.

5.13 Council Cheque and Bank Signatories

A list of the posts delegated with cheque and bank signatory authority are included within the appendices to the Treasury Management Strategy Statement.

Responsible Section/Team	Finance	Version/Status	2025/26
Responsible Author	Director of Resources	Report submitted to	Full Council
Date Amended now	Feb 2025	Meeting date	March 2025
Due for Review	Feb 2026	Page	25

TMP 6 Reporting Requirements and Management Information Arrangements

6.1 Annual programme of reporting

- a) Annual reporting requirements before the start of the year: -
 - a. review of the organisation's approved clauses, treasury management policy statement and practices
 - b. strategy report on proposed treasury management activities for the year comprising of the Treasury Management Strategy Statement, Annual Investment Strategy and Minimum Revenue Provision Policy Statement
 - c. capital strategy to give a longer term view of the capital programme and treasury management implications thereof beyond the three year time horizon for detailed planning
- b) Regular review by Cabinet within the Financial Monitoring Reports incorporating Mid-Year Review
- c) Annual review report after the end of the year within the out-turn Financial Monitoring Report.

6.2 Annual Treasury Management Strategy Statement (TMSS)

1. The Treasury Management Strategy Statement sets out the specific expected treasury activities for the forthcoming financial year. This strategy will be submitted to the Cabinet and then to the full Council for approval before the commencement of each financial year.
2. The formulation of the annual Treasury Management Strategy Statement involves determining the appropriate borrowing and investment decisions in the light of the anticipated movement in both fixed and shorter -term variable interest rates. For instance, this Council may decide to postpone borrowing if fixed interest rates are expected to fall, or borrow early if fixed interest rates are expected to rise.
3. The Treasury Management Strategy Statement is concerned with the following elements:
 - a) Prudential and Treasury Indicators
 - b) current Treasury portfolio position
 - c) borrowing requirement
 - d) prospects for interest rates
 - e) borrowing strategy
 - f) policy on borrowing in advance of need
 - g) debt rescheduling
 - h) investment strategy
 - i) creditworthiness policy
 - j) policy on the use of external service providers
 - k) any extraordinary treasury issue
 - l) the MRP/VRP strategy

Responsible Section/Team	Finance	Version/Status	2025/26
Responsible Author	Director of Resources	Report submitted to	Full Council
Date Amended now	Feb 2025	Meeting date	March 2025
Due for Review	Feb 2026	Page	26

4. The Treasury Management Strategy Statement will establish the expected move in interest rates against alternatives (using all available information such as published interest rate forecasts where applicable), and highlight sensitivities to different scenarios.

6.3 The Annual Investment Strategy

Included within the Treasury Management Strategy Statement is the report on the Annual Investment Strategy which sets out the following: -

- a) The Council's risk appetite in respect of security, liquidity and optimum performance
- b) The definition of high credit quality to determine what are specified investments as distinct from non specified investments
- c) Which specified and non specified instruments the Council will use
- d) Whether they will be used by the in house team, external managers or both (if applicable)
- e) The Council's policy on the use of credit ratings and other credit risk analysis techniques to determine creditworthy counterparties for its approved lending list
- f) Which credit rating agencies the Council will use
- g) How the Council will deal with changes in ratings, rating watches and rating outlooks
- h) Limits for individual counterparties and group limits
- i) Country limits
- j) Levels of cash balances
- k) Interest rate outlook
- l) Budget for investment earnings
- m) Policy on the use of external service providers

6.4 The Annual Minimum Revenue Provision Policy Statement

This statement will be submitted as one element of the Annual Treasury Management Strategy Statement and will set out how the Council will make revenue provision for repayment of its borrowing using the four options for so doing.

6.5 Policy on Prudential and Treasury Indicators

1. The Council approves before the beginning of each financial year a number of treasury limits which are set through Prudential and Treasury Indicators.
2. The responsible officer is responsible for incorporating these limits into the Annual Treasury Management Strategy Statement, and for ensuring compliance with the limits. Should it prove necessary to amend these limits, the responsible officer shall submit the changes for approval to the full Council

Responsible Section/Team	Finance	Version/Status	2025/26
Responsible Author	Director of Resources	Report submitted to	Full Council
Date Amended now	Feb 2025	Meeting date	March 2025
Due for Review	Feb 2026	Page	27

6.6 Regular and midyear review

The Council will review its treasury management activities and strategy on at least a six monthly basis, though in practice as part of regular financial monitoring to Cabinet. This review will consider the following:

- a) activities undertaken
- b) variations (if any) from agreed policies/practices
- c) interim performance report
- d) regular monitoring
- e) monitoring of treasury management indicators for local authorities.

6.7 Management Information Reports, including a year-end performance report

Management information reports will be prepared for each Cabinet meeting, the final report going to the first available Cabinet after the year-end. These reports will contain the following information: -

- a) a summary of transactions executed (may want to add brokers used and fees paid) and their revenue (current effects);
- b) measurements of performance including effect on loan charges/investment income;
- c) degree of compliance with original strategy and practices and explanation of variances.
- d) any non compliance with Prudential limits or other treasury management limits.

6.8 Publication of Treasury Management Reports

Treasury Management information reports will be prepared for each Cabinet meeting and these are available as part of the agenda documents on the Council's website at www.rossendale.gov.uk .

The Annual Treasury Management Strategy Statement and the Treasury Management Practices are reviewed at the Full Council meeting each February and are again available as part of the agenda documents on the Council's website at www.rossendale.gov.uk .

Responsible Section/Team	Finance	Version/Status	2025/26
Responsible Author	Director of Resources	Report submitted to	Full Council
Date Amended now	Feb 2025	Meeting date	March 2025
Due for Review	Feb 2026	Page	28

TMP 7 BUDGETING, ACCOUNTING AND AUDIT ARRANGEMENTS

7.1 Statutory/Regulatory Requirements

The accounts are drawn up in accordance with the Code of Practice on Local Authority Accounting in Great Britain that is recognised by statute as representing proper accounting practices. The Council has also adopted in full the principles set out in CIPFA's 'Treasury Management in the Public Services - Code of Practice' (the 'CIPFA Code') 2021 edition, together with those of its specific recommendations that are relevant to this Council's treasury management activities.

7.2 Sample Budgets / Accounts / Prudential and Treasury Indicators

The Director of Resources will prepare at least a three year medium term financial plan with Prudential and Treasury Indicators for treasury management which will incorporate the budget for the forthcoming year and provisional estimates for the following two years. This will bring together all the costs involved in running the function, together with associated income. The Director of Resources will exercise effective controls over this budget and monitoring of performance against Prudential and Treasury Indicators, and will report upon and recommend any changes required in accordance with TMP6.

The matters to be included in the budget will at minimum be those required by statute or regulation, together with such information as will demonstrate compliance with TMP1 Risk management, TMP2 Performance measurement, and TMP4 Approved instruments, methods and techniques.

7.3 List of Information Requirements of External Auditors.

- Reconciliation of loans outstanding in the financial ledger to Treasury Management records
- Maturity analysis of loans outstanding
- Certificates for new long term loans taken out in the year
- Reconciliation of loan interest, discounts received and premiums paid to financial ledger by loan type
- Calculation of loans fund interest and debt management expenses
- Details of interest rates applied to internal investments
- Calculation of interest on working balances
- Interest accrual calculation
- Principal and interest charges reports from the ledgers
- Analysis of any deferred charges
- Calculation of loans fund creditors and debtors
- Annual Treasury Report
- Treasury Management Strategy Statement and Prudential and Treasury Indicators
- Review of observance of limits set by Prudential and Treasury Indicators
- Calculation of the Minimum Revenue Provision
- External fund manager(s) valuations including investment income schedules and movement in capital values (if applicable)

7.4 Monthly Budget Monitoring Report

Monthly Budget Monitoring reports are produced for the Director of Resources with quarterly reports to Cabinet. The report is intended to highlight any variances between budgets and spend in order that the Council can assess its financial position. Details of treasury management activities are included within the Cabinet report.

Responsible Section/Team	Finance	Version/Status	2025/26
Responsible Author	Director of Resources	Report submitted to	Full Council
Date Amended now	Feb 2025	Meeting date	March 2025
Due for Review	Feb 2026	Page	29

TMP 8 Cash and Cash Flow Management

8.1 Arrangements for Preparing/Submitting Cash Flow Statements

Cash flow projections are prepared annually and updated monthly and daily. The annual and monthly cash flow projections are prepared according to known changes in levels of income and expenditure and also changes in payments and receipts dates. These details are supplemented on an ongoing basis by information received of new or revised amounts to be paid or received as and when they are known.

The responsible officer will ensure that these are adequate for the purposes of monitoring compliance with TMP1 - Liquidity risk management, and for the purpose of identifying future borrowing needs.

8.2 Bank Statements Procedures

The Council receives daily bank statements via a daily download of data from its bank. All amounts on the statement are checked to source data from Payroll, Creditors etc.

A formal bank reconciliation is undertaken on a monthly basis by the Finance Team.

8.3 Payment Scheduling and Agreed Terms of Trade with Creditors

Our policy is to pay all creditors as per the agreed terms of trading.

8.4 Arrangements for Monitoring Debtors / Creditors Levels

The Finance Manager is responsible for monitoring the levels of debtors and creditors.

8.5 Procedures for Banking of Funds

All money received by an officer on behalf of the Council will, without unreasonable delay, be passed to the Exchequer Team to deposit in the Council's banking accounts. Cash and cheques banked the previous day will be taken into account in the daily cash flow.

8.6 Practices Concerning Prepayments to Obtain Benefits

The Council has no formal arrangement in place. Where such opportunities arise, the prepayment would be sought and authorised by the Director of Resources.

Responsible Section/Team	Finance	Version/Status	2025/26
Responsible Author	Director of Resources	Report submitted to	Full Council
Date Amended now	Feb 2025	Meeting date	March 2025
Due for Review	Feb 2026	Page	30

TMP 9 Money Laundering

9.1 Proceeds of Crime Act 2002

Money laundering has the objective of concealing the origin of money generated through criminal activity. Legislation has given a higher profile to the need to report suspicions of money laundering. The Proceeds of Crime Act (POCA) 2002 established the main offences relating to money laundering. In summary, these are:

- concealing, disguising, converting, transferring or removing criminal property from England and Wales, from Scotland or from Northern Ireland
- being concerned in an arrangement which a person knows or suspects facilitates the acquisition, retention, use or control of criminal property
- acquiring, using or possessing criminal property.

These apply to all persons in the UK in a personal and professional capacity. Any person involved in any known or suspected money-laundering activity in the UK risks a criminal conviction. Other offences under the POCA include:

- failure to disclose money-laundering offences
- tipping off a suspect, either directly or indirectly
- doing something that might prejudice an investigation – for example, falsifying a document.

9.2 The Terrorism Act 2000

This act made it an offence of money laundering to become concerned in an arrangement relating to the retention or control of property likely to be used for the purposes of terrorism, or resulting from acts of terrorism. All individuals and businesses in the UK have an obligation to report knowledge, reasonable grounds for belief or suspicion about the proceeds from, or finance likely to be used for, terrorism or its laundering, where it relates to information that comes to them in the course of their business or employment.

9.3 The Money Laundering Regulations 2007, 2012 and 2015

Organisations pursuing relevant business (especially those in the financial services industry regulated by the FSA) are required to appoint a nominated officer and implement internal reporting procedures; train relevant staff in the subject; establish internal procedures with respect to money laundering; obtain, verify and maintain evidence and records of the identity of new clients and transactions undertaken and report their suspicions. In December 2007 the UK Government published the Money Laundering Regulations 2007, which replaced the Money Laundering Regulations 2003.

9.4 Local authorities

Public service organisations and their staff are subject to the full provisions of the Terrorism Act 2000 and subsequent Terrorism Acts and may commit most of the principal offences under the POCA, but are not legally obliged to apply the provisions of the Money Laundering Regulations 2007, 2012 and 2015. However, as responsible public bodies, they should employ policies and procedures which reflect the essence of the UK's anti-terrorist financing, and anti-money laundering, regimes.

Responsible Section/Team	Finance	Version/Status	2025/26
Responsible Author	Director of Resources	Report submitted to	Full Council
Date Amended now	Feb 2025	Meeting date	March 2025
Due for Review	Feb 2026	Page	31

Accordingly this Council will do the following: -

- a) evaluate the prospect of laundered monies being handled by them
- b) determine the appropriate safeguards to be put in place
- c) require every person engaged in treasury management to make themselves aware of their personal and legal responsibilities for money laundering awareness
- d) make all its staff aware of their responsibilities under POCA
- e) appoint a member of staff to whom they can report any suspicions. This person is Director of Resources
- f) in order to ensure compliance is appropriately managed, this Council will require senior management to give appropriate oversight, analysis and assessment of the risks of clients and work/product types, systems for monitoring compliance with procedures and methods of communicating procedures and other information to personnel.
- g) The officer responsible for the creation and monitoring the implementation of a corporate anti money laundering policy and procedures is The Head of Legal and Democratic Services and it shall be a requirement that all services and departments implement this corporate policy and procedures.

9.5 Procedures for Establishing Identity / Authenticity of Lenders

It is not a requirement under POCA for local authorities to require identification from every person or organisation it deals with. However, in respect of treasury management transactions, there is a need for due diligence and this will be effected by following the procedures below.

The Council does not accept loans from individuals.

All loans are obtained from the PWLB, other local authorities or from authorised institutions under the Financial Services and Markets Act 2000. This register can be accessed through the FCA website on www.fca.gov.uk.

When repaying loans, the procedures in 9.6 will be followed to check the bank details of the recipient.

9.6 Methodologies for Identifying Deposit Takers

In the course of its treasury activities, the Council will only lend money to or invest with those counterparties that are on its approved lending list. These will be local authorities, the PWLB, Bank of England and authorised deposit takers under the Financial Services and Markets Act 2000. The FCA register can be accessed through their website on www.fca.gov.uk.

All transactions will be carried out by BACS or CHAPs for making deposits or repaying loans.

Responsible Section/Team	Finance	Version/Status	2025/26
Responsible Author	Director of Resources	Report submitted to	Full Council
Date Amended now	Feb 2025	Meeting date	March 2025
Due for Review	Feb 2026	Page	32

TMP 10 Training and Qualifications

The Council recognises that relevant individuals will need appropriate levels of training in treasury management due to its increasing complexity. There are two categories of relevant individuals: -

- a) Treasury management staff employed by the Council
- b) Members charged with governance of the treasury management function

All treasury management staff should receive appropriate training relevant to the requirements of their duties at the appropriate time. The Council operates a Personal Development Review system which identifies the training requirements of individual members of staff engaged on treasury related activities.

Additionally, training may also be provided on the job and it will be the responsibility of the Director of Resources to ensure that all staff under his / her authority receive the level of training appropriate to their duties. This will also apply to those staff who from time to time cover for absences from the treasury management team.

10.1 Details of Approved Training Courses

Treasury management staff and members will go on courses provided by our treasury management consultants, CIPFA, money brokers etc.

10.2 Records of Training Received by Treasury Staff

The People and Policy department will maintain records on all staff and the training they receive.

10.3 Record of Secondment of Senior Management

Records will be kept of senior management who are seconded into the treasury management section in order to gain firsthand experience of treasury management operations.

10.4 Statement of Professional Practice (SOPP)

1. Where the Chief Financial Officer is a member of CIPFA, there is a professional need for the CFO to be seen to be committed to professional responsibilities through both personal compliance and by ensuring that relevant staff are appropriately trained.
2. All staff involved in treasury management activities must also comply with the SOPP.

10.6 Member training records

Records will be kept of all training in treasury management provided to members.

10.7 Members charged with governance

Members charged with diligence also have a personal responsibility to ensure that they have the appropriate skills and training for their role.

Responsible Section/Team	Finance	Version/Status	2025/26
Responsible Author	Director of Resources	Report submitted to	Full Council
Date Amended now	Feb 2025	Meeting date	March 2025
Due for Review	Feb 2026	Page	33

TMP 11 Use of External Service Providers

11.1 Details of Contracts with Service Providers, Including Bankers, Brokers, Consultants, Advisers

This Council will employ the services of other organisations to assist it in the field of treasury management. In particular, it will use external consultants to provide specialist advice in this ever more complex area. However, it will ensure that it fully understands what services are being provided and that they meet the needs of this organisation, especially in terms of being objective and free from conflicts of interest.

It will also ensure that the skills of the in house treasury management team are maintained to a high enough level whereby they can provide appropriate challenge to external advice and can avoid undue reliance on such advice.

Treasury management staff and their senior management will therefore be required to allocate appropriate levels of time to using the following sources of information so that they are able to develop suitable levels of understanding to carry out their duties, especially in challenge and avoiding undue reliance.

- The quality financial press
- Market data
- Information on government support for banks and
- The credit ratings of that government support

11.1.1 Banking Services

- a) Name of supplier of service is the NatWest Bank.
- b) Regulatory status – banking institution authorised to undertake banking activities by the FSA
- c) The branch address is:
28 Bank Street
Rawtenstall
Rossendale
Lancashire
BB4 8TS
Tel :- 0151 802 9354 (Business Banking) or
0845 302 1511 (Branch Banking)
- d) Contract commenced 1992
- e) Cost of service is variable depending on a schedule of tariffs set annually applied to volumes of transactions
- f) Payments are due monthly and quarterly

Responsible Section/Team	Finance	Version/Status	2025/26
Responsible Author	Director of Resources	Report submitted to	Full Council
Date Amended now	Feb 2025	Meeting date	March 2025
Due for Review	Feb 2026	Page	34

11.1.2 Money-Broking Services

The Council may use money brokers for temporary borrowing and investment and long term borrowing. It will seek to give an even spread of business amongst the approved brokers.

11.1.3 Consultants'/Advisers' Services

Treasury Consultancy Services

The Council will seek to take expert advice on interest rate forecasts, annual treasury management strategy, timing for borrowing and lending, debt rescheduling, use of various borrowing and investment instruments, how to select credit worthy counterparties to put on its approved lending list etc.

The performance of consultants will be reviewed annually by the Director of Resources to check whether performance has met expectations.

- a) Name of supplier of service is Link Treasury Solutions. Their address is 65 Gresham Street, London, EC2V 7NQ
- b) Regulatory status: investment adviser authorised by the FCA
- c) Cost of service in 2024/25 was £8,400.
- d) Payments are due bi-annually in April and October

11.1.4 Procedures and Frequency for Tendering Services

As per the Council's contract procedure rules.

Responsible Section/Team	Finance	Version/Status	2025/26
Responsible Author	Director of Resources	Report submitted to	Full Council
Date Amended now	Feb 2025	Meeting date	March 2025
Due for Review	Feb 2026	Page	35

TMP 12 Corporate Governance

12.1.1 List of documents to be made available for public inspection

- a. The Council is committed to the principle of openness and transparency in its treasury management function and in all of its functions.
- b. It has adopted the CIPFA Code of Practice on Treasury management and implemented key recommendations on developing Treasury Management Practices, formulating a Treasury Management Policy Statement and implementing the other principles of the Code.
- c. The following documents are available for public inspection: -

Treasury Management Strategy Statement

including the Annual Investment Strategy

Treasury Management Policy Statement

Minimum Revenue Provision Policy Statement

Treasury Management monitoring reports produced as part of the Council's regular financial monitoring reports to Cabinet.

Annual Statement of Accounts

Annual Revenue Budget and MTFS

Capital Strategy and 5 Year Capital Programme

Minutes of Council / Cabinet / committee meetings

Third party expenditure via quarterly corporate spend analysis published on the website to comply with the coalition government's transparency agenda.

Responsible Section/Team	Finance	Version/Status	2025/26
Responsible Author	Director of Resources	Report submitted to	Full Council
Date Amended now	Feb 2025	Meeting date	March 2025
Due for Review	Feb 2026	Page	36

IMP Investment Management Practices for Investments that are not part of Treasury Management activity

This Council recognises that investments taken for non-treasury management purposes require careful investment management. Such investments include loans supporting service outcomes, investments in subsidiaries, or investment property portfolios.

The Council's annual treasury management strategy, Capital Strategy, Investment Strategy and similar documents will cover all the organisation's investments, and will set out, where relevant, specific policies and arrangements for non-treasury investments.

This schedule will include a summary of existing material investments, subsidiaries, joint ventures and liabilities including financial guarantees and contingent liabilities and the authority's risk exposure. It will be recognised that the risk appetite for these activities may differ from that for treasury management and this is contained within the Council's approved Capital Strategy.

CIPFA recommends separate Investment Management Practices (IMPs) for non-treasury activities and acknowledges reference to TMPs 1, 2, 5, 6, and 10 for the management of **Risk, Performance, Governance, Reporting** and **Training**, respectively.

Information suggested for non-treasury investments:

1.1 Risk management

The cross-sectoral guidance recognises the categories of investments as follows:

- For treasury management purposes
- For service delivery purposes
- For commercial purposes, including non-financial assets held primarily for financial return, such as commercial properties.

Organisations are required to establish investment management practices for their non-treasury management investments, similar to their treasury management practices. The IMP recommends a schedule for each such investment portfolio, setting out the investment objectives, investment criteria, risk management arrangements, decision-making and reporting arrangements, performance measurement and management, and arrangements for training and qualifications.

The basic principle is that the TM Code covers all investments, and the organisation should ensure that it has due diligence, investment management and risk management arrangements in place and monitored actively for its service and commercial investment portfolios, as well as for its treasury management investments.

Responsible Section/Team	Finance	Version/Status	2025/26
Responsible Author	Director of Resources	Report submitted to	Full Council
Date Amended now	Feb 2025	Meeting date	March 2025
Due for Review	Feb 2026	Page	37