



Play Strategy for Rossendale

Overview



Groundwork Rossendale
Rossendale Borough Council



Foreword by Cllr Judith Driver



"I am pleased to endorse this document on behalf of Rossendale Borough Council and its commitment to ensuring a strategic approach to the delivery of free play facilities and environments where children and young people can experience interesting and stimulating play spaces.

I feel it is essential to listen to views of children and young people and we attempted to consult all children and young people within Rossendale. Over 1096 children and young people responded in addition to all local play providers. The results can be found in the main strategy document.

The results found that most children play near home. This may be due to the loss of public space, and changing attitudes of parents towards child safety. Whatever the causes or perceptions, the public realm needs to be reclaimed by the community for the health and well being of our children.

I believe The Play Strategy can help address some of the barriers children and parents find when trying to access suitable areas for play and ensure that PLAY remains at the forefront of the Council's agenda."

Councillor Judith Driver, Greensclough Ward

- Play Champion
- Bacup Area Board Cabinet
- Street Scene & Liveability Portfolio Holder
- Cabinet
- Lancashire Local Housing - Portfolio Holder
- Bacup Area Forum
- Outside Bodies: Bacup Sports Council, Green Vale Homes, Lancashire Waste Management Steering Group, Mary Southworth Charity

The above excerpt has been taken from the foreword to the main Play Strategy document which Councillor Driver has endorsed.

This document is an overview of the full Play Strategy document and will be useful to councillors, community groups, play providers, funders, developers, and the general public. It will provide a summary of all the information contained within the Play Strategy document.

Contents



Gemma, aged 10, Haslingden Primary School

Item	Contents	Page
1.	Foreword by Cllr Driver	2
2.	Contents	2
3.	Introduction	3
	a. The need for a Play Strategy	3
	b. Aims of the Play Strategy	3
	c. Objectives of the Play Strategy	3
	d. Defining Play	4
	e. Barriers to play	4
	f. Inequality and exclusion	5
4.	Scope of the Play Strategy	6
	a. Vision	6
	b. Scope of the Play Strategy	6
	c. Statement of intent	7
	d. The case for play	7
	e. Profile of Rossendale	7
	f. Map of SOAs for Rossendale	8
	g. Links with other strategies	9
	h. Key partnerships	9
5.	Community Consultation	10
	a. Consultation process	10
	b. Explanation of results	10
	c. Priorities for improvement	11
6.	What's Happening in My Ward and When?	12
7.	Monitoring and Evaluation	14
8.	Year 1 Action Plan	15
9.	Year 2 Action Plan	19
10.	Year 3 Action Plan	22
11.	Year 2010-2015 Action Plan	24
12.	Year 2015-2020 Action Plan	24
13.	Plan Policies	25
14.	Conclusion	31

3. Introduction

3a. THE NEED FOR A PLAY STRATEGY

Children and young people need 'free play' in order to develop their creative problem solving skills, social skills and indeed to explore the outside world and interact with it. They should be able to express themselves through unstructured and spontaneous play which strengthens their developmental progress, and is essential for their physical development. Play and physical fitness can increase good mental and emotional health and thus contribute to the overall fitness of the next generation.

The Government White Paper 'Choosing Health (2004)' stated:

'many children appear to have less time being physically active... because of the increase in car use and heightened concern about potential risks of unsupervised play outdoors.'

Carers concerns regarding safety and the shift from unstructured play to structured play are contributing factors to the decline in our children's health. The Play Strategy can address this decline by setting priorities for improving opportunities for safe 'free play' within Rossendale.

The barriers to play which children and young people encounter due to the lack of safe areas/facilities that are within their local environment, has to be tackled to prevent young people leading isolated sedentary lives, creating fractured communities instead of potential active citizens of the community.

3b. AIMS OF THE PLAY STRATEGY

Rossendale Borough Council aims to raise awareness of the importance of 'free play', within Rossendale and create a lasting support structure which will ensure the implementation of a co-ordinated approach to improving means of play for children and young people.

Throughout this document, please understand the term 'Children' will include all children and young people up age 19.

Additionally we aim to ensure that there are relevant, challenging and inclusive opportunities for play within their own localities which reflect the current needs of children and young people.

Quality indicators for play are BVPI 115 and they will be used by Rossendale Borough Council, as a benchmark, to ensure all children in Rossendale have the opportunity to access good quality play facilities and environments.

It is important to note that the adult role in play provision through this strategy is to enable appropriate play rather than direct on the type and content of play.

3c. OBJECTIVES OF THE PLAY STRATEGY

The Play Strategy will....

- Identify and gain support from local partners and create a 'Play Partnership' whose role will be to steer, advise and ensure delivery of the Rossendale Play Strategy.

"I play on the street but it is bad because of cars and where I live, if the ball goes over this ladies fence she is so mean she won't give it you back"

Pupil, aged 11, Tonacliffe Primary School

- Recommend the election of a 'Play Champion' whose role will be to drive the strategy forward and make sure that the strategy is adhered to in an appropriate way.
- Map all the main areas associated with play within Rossendale.
- Highlight the 'top five' means of play within each Super Output Area (SOA).
- Highlight the 'top five' means of play within each ward area.
- Highlight the 'top five' means of play within Rossendale.
- Highlight the priorities for improvement at Super Output Area (SOA) level, Ward level and Borough level.
- Secure £200,000 allocated to Rossendale from the Big Lottery Fund.
- Give a definite direction (based on consultation and priorities) where the £200,000 Big Lottery Fund grant offer should be spent.

Objectives for Children

Delivery of the Play Strategy, will...

- Extend the choice and control that children and young people have for play opportunities, the freedom they enjoy and the satisfaction they gain from it.
- Recognise the child's need to test boundaries and respond positively to that need.
- Help manage the balance between the need to offer risk and the need to keep children safe from harm.
- Maximise the range of play opportunities in each locality.
- Foster independence and healthy self esteem.
- Foster respect for others and offer opportunities for social interaction.
- Foster well being, healthy growth and development, knowledge and understanding, creativity and capacity to learn.

3d. DEFINING PLAY

'Play is freely chosen, personally directed; intrinsically motivated behaviour that actively engages the child... Play can be fun or serious. Through play children explore social, material and imaginary worlds and their relationship with them, elaborating all the while a flexible range of responses to the challenges they encounter.'

Rossendale Borough Council will adopt this definition taken from the Children's Play Council, Planning for Play Guidance on the development and implementation of a local Play Strategy. It is important to recognise the diversity, complexity and richness of children's play. The variety of which should help us to think beyond just play equipment and kick-around pitches.

3e. BARRIERS TO PLAY

'The overwhelming cry from both parents and young people is around the lack of activities and facilities... the thing they say would most improve family life is the provision of places to go and things to do, where they can spend their leisure time with their friends'

Margaret Hodge, Minister for Children and Families (2005)

Children and young people commonly identify many barriers to play such as:

- Fears for their safety
- Fears from traffic
- Fears from bullying
- Dirty, boring, or run-down play areas and parks
- Lack of choice
- Lack of access

Parents and the wider community strongly believe that children today have fewer opportunities to play than they did as children, and are spending too much time watching television or using computers.

3f. INEQUALITY AND EXCLUSION

While the decline in play opportunities affects children generally, the impact is disproportionately greater on disabled children and children living with other forms of social or economic disadvantage, for whom access to free and enjoyable play spaces is especially important.

Alison John, Kidsactive and the Better Play Awards

'Inclusive play provision is open and accessible to all and takes positive action in removing disabling barriers so that disabled children and non-disabled children can participate'

Disabled children and young people do not enjoy equal access to play and leisure activities. They can often feel threatened in open spaces and the design of play equipment limits their access which can lead to this group of people being marginalised by society.

Certain minority ethnic groups are also disproportionately excluded from play provision: some Asian children – and girls in particular – are discouraged from attending mainstream play services owing to a range of cultural and ethnic pressures. Many black and minority ethnic children still report experiencing overt and implicit racism.

Cycle track at Tor View School for young people with specialist educational needs



Inequality and Exclusion in Rossendale

According to 2004 National Statistics for the Health Deprivation and Disability, Rossendale has 9 Super Output areas which are in the bottom 10% most deprived. This means there are areas in Rossendale where people are more likely to die prematurely or whose life is impaired by poor health, or who are disabled.

The Play Strategy will map these areas of inequality and exclusion in Rossendale and make them priorities for improvement.

See Rossendale Borough Profile- The Core Strategy Evidence Base –Topic 3, Page 5

In order to achieve improved standards and meet the needs of the community, we will need to consult with the community. All improvements will be based on consultation with local people.

"I wish we had more spaces where children can kick a ball. My dream is to see notices **'You can play ball here; you can ride your bike here; you can skate here'**. Everyone supports this dream until a place is mentioned near their home, then its 'no way'".

Cllr Sandiford, Greenfield Ward

We aim to improve or remove areas like this:



Run down and disused Laburnum Street play area, Haslingden

...and create areas like this:

Recently refurbished Gordon Street play area, Bacup



4. Scope of the Play Strategy

4a. VISION FOR PLAY IN ROSSENDALE

We will provide spaces and opportunities where all children and young people can play safely, within controlled learning environments which are both stimulating and challenging. They should take acceptable risks and be able to interact with their peers, have a sense of belonging and learn social and movement skills close to their home environments. We will manage and provide spaces where they can play freely whatever their ability or background.

Rossendale requires a mix of carefully located, attractive and accessible facilities which will give high quality play opportunities encouraging children and young people to be active, creative and adventurous. They also need to be informed of play opportunities.

The vision recognises the need for children to play freely, make their own choices in play and be able to come and go as they please.

To make this vision a reality, we have formed a **Play Partnership** between all the stakeholders involved in providing children's play opportunities.

Please see section 4 for more information about the Play Partnership.

4b. SCOPE OF THE PLAY STRATEGY – 'The Three Free's'

This strategy will focus on activities that are self-directed, creative and fun. These activities will be referred to as '**THE THREE FREE'S**' that is:-

1. Free of charge
2. Free to choose
3. Free to come and go

The Play Strategy will naturally focus on areas of greatest need and will take into account the needs of socially excluded children i.e. children with disabilities and other young people who do not have access to quality play opportunities.

We recognise that play occurs in many different environments and buildings under supervision and in many cases where payment has been made for that activity. Paid play services will be mapped and used to determine a strategic overview of where intended paid play and free play should occur and consequently where a change of provision should take place.

Sketch by Aisha, aged 10, Haslingden Primary School



Paid play facilities

The following services will be mapped:

- Extended school services where free play is not provided. i.e. After School and Pre School
- Paid, supervised play activities such as youth clubs, school clubs, junior youth clubs, play schemes etc (which are not adult led).
- Paid play schemes such as parent and toddler groups.
- Nurseries
- Free Holiday Schemes (Adult Led)

Please see the full strategy document for further information

Exclusions

The following areas of play will be excluded from this Play Strategy, because they do not fit into the 'three frees' criteria for play.

- The school curriculum
- Paid Child Care
- Private Play Facilities e.g. Pubs, Fairground attractions and theme parks
- Paid Holiday Schemes
- Organised activities such as drama, dance, music and sports etc
- Organised groups such as brownies, scouts, guides, cadets etc

- Educational play within libraries
- Countryside ranger educational activities
- Virtual Play

4c. STATEMENT OF INTENT

- Rossendale Borough Council are committed to ensuring that all children have access to rich, stimulating environments, both in and out of doors, free from unacceptable risks, thereby offering them the opportunity to explore through their freely chosen play, both themselves and the world.
- Rossendale is committed to ensuring that provisions for play are attractive, welcoming and accessible to every child irrespective of age, gender, background, origin, or individual capacities and abilities.
- We will work towards increasing play opportunities for disabled children and children with specific cultural needs.

The Play Strategy will work in parallel with and support the intent of the Rossendale Borough Council Children and Young People's Strategy.

4d. THE CASE FOR PLAY

The value and significance of play for children and young people needs to be simply stated: **“Play is integral to a ‘healthy’ community, whether that be on a very local level i.e. Super Output Area or wider i.e. Borough level.”**

Benefits of play for children:

- Play provides children with opportunities to enjoy freedom, and exercise choice and control over their actions.
- Play offers children opportunities for testing boundaries and exploring risk.
- Play offers a very wide range of physical, social and intellectual experiences for children.

Benefits of play that develop over time:

- Fosters independence and self-esteem.
- Develops children's respect for others and offers opportunities for social interaction.
- Supports the child's well-being, healthy growth and development.
- Increases knowledge and understanding.
- Promotes creativity and capacity to learn.

(Best Play: What Play Provision Should Do For Children, NPFA, March 2000, P.11)



4e. PROFILE OF ROSSENDALE

According to the 2003 population estimates there were 66,000 people residing in Rossendale, of whom 48.7% were male and 51.3% were female. Children under five accounted for approximately 6% of the resident population of Rossendale. The percentage of minority ethnic background according to the 2001 census was 3.5%. (*Census statistics* www.statistics.gov.uk).

Indices of Multiple Deprivation 2004 (See Glossary in main document) are used within this strategy. They contains seven Domains which relate to Income deprivation, Employment deprivation, Health deprivation and disability, Education, skills and training deprivation, Barriers to Housing and Services, Living environment deprivation and Crime.

According to these indices Rossendale is divided into 44 Super Output Areas (SOAs) of which 2 SOAs fall within the worst 10% in the country, 6 SOAs in the worst 10-20% and 12 SOAs in the worst 20-30% nationally. These areas lie within 11 out of the 14 wards in Rossendale. The total population within these 20 SOAs is 28,164, which means that Rossendale has 42.90% of its population living in areas that are considered to be within the worst 30% of the Country.

The consultations, analyses, conclusions and priority recommendations within this strategy will be considered at Super Output level, Ward Level and also at Borough wide level.

See plan overleaf for locations of wards and SOAs within Rossendale.

Please see the glossary in the main document for more information.

Notes

1. Super Output Areas are based on the 2011 Census data and are not subject to boundary changes. They are not subject to the same boundary changes as wards.
2. The map shows the Super Output Areas for the Borough of Rossendale. It is not a map of the Borough of Rossendale.

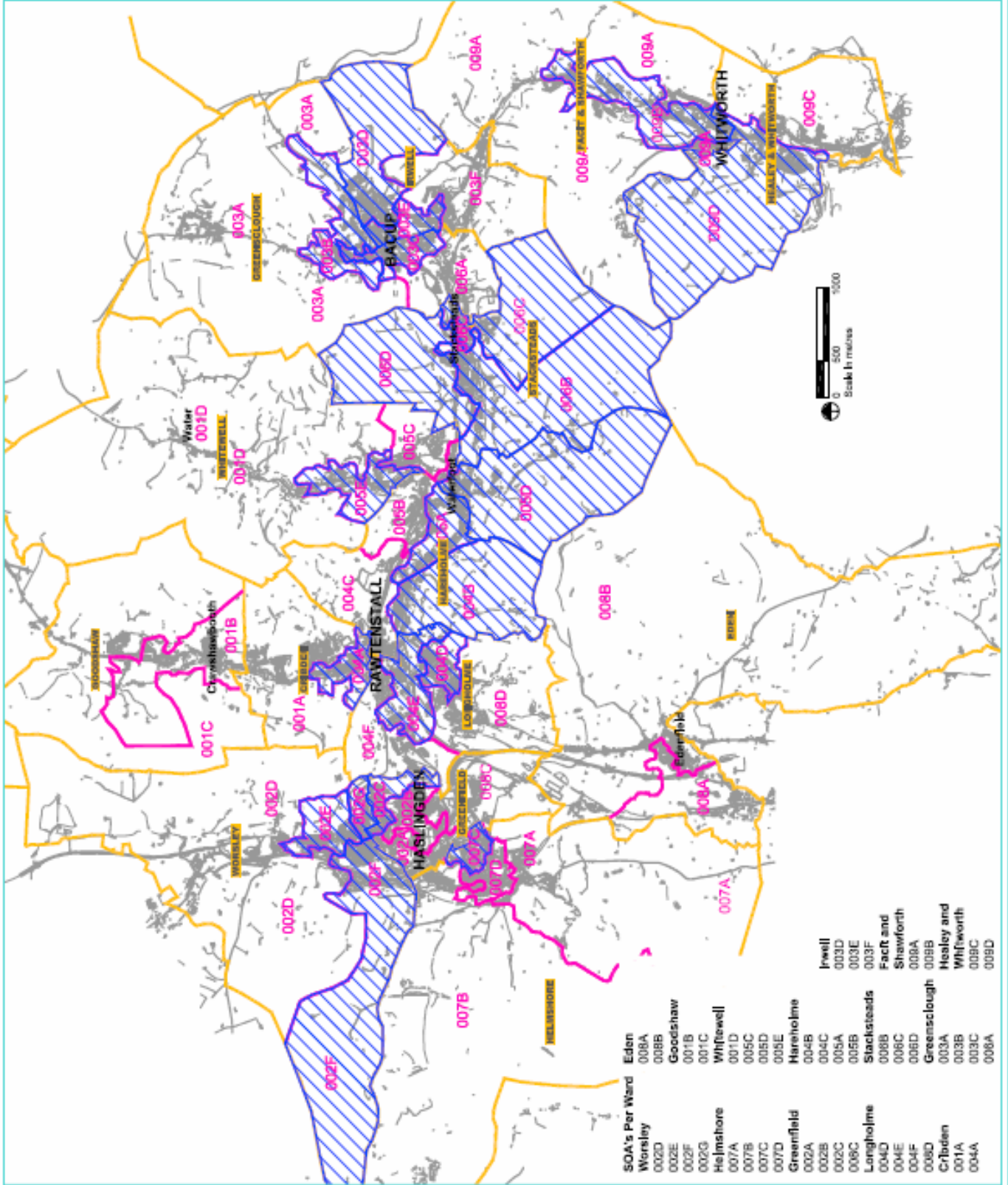
KEY	Ward Boundary	Super Output Area Boundary	Priority Super Output Area
	(Black line)	(Pink line)	(Blue hatched area)

SUPER OUTPUT AREAS

DATE	REVISIONS	REVISION
01/06/2011	01	Initial Issue

Author	John H. H. H.
Checked	John H. H. H.
Approved	John H. H. H.
Project Manager	John H. H. H.
Project Number	0000000000
Project Name	Super Output Areas

Scale	1:50,000
Date	08.01.07
Author	John H. H. H.
Checked	John H. H. H.
Approved	John H. H. H.
Project Manager	John H. H. H.
Project Number	0000000000
Project Name	Super Output Areas



SOA's Per Ward	SOA's
Eden	008A
Worsley	008B
Goodshaw	001B
Whitehall	001C
Helmsford	007A, 007B, 007C, 007D, 007E, 007F, 007G, 007H, 007I, 007J, 007K, 007L, 007M, 007N, 007O, 007P, 007Q, 007R, 007S, 007T, 007U, 007V, 007W, 007X, 007Y, 007Z
Greenfield	002A, 002B, 002C, 002D, 002E, 002F, 002G, 002H, 002I, 002J, 002K, 002L, 002M, 002N, 002O, 002P, 002Q, 002R, 002S, 002T, 002U, 002V, 002W, 002X, 002Y, 002Z
Longholme	004A, 004B, 004C, 004D, 004E, 004F, 004G, 004H, 004I, 004J, 004K, 004L, 004M, 004N, 004O, 004P, 004Q, 004R, 004S, 004T, 004U, 004V, 004W, 004X, 004Y, 004Z
Cribden	001A, 001B, 001C, 001D, 001E, 001F, 001G, 001H, 001I, 001J, 001K, 001L, 001M, 001N, 001O, 001P, 001Q, 001R, 001S, 001T, 001U, 001V, 001W, 001X, 001Y, 001Z
Jewell	003D
Stacksteads	003E, 003F, 003G, 003H, 003I, 003J, 003K, 003L, 003M, 003N, 003O, 003P, 003Q, 003R, 003S, 003T, 003U, 003V, 003W, 003X, 003Y, 003Z
Fact and Shawforth	006A, 006B, 006C, 006D, 006E, 006F, 006G, 006H, 006I, 006J, 006K, 006L, 006M, 006N, 006O, 006P, 006Q, 006R, 006S, 006T, 006U, 006V, 006W, 006X, 006Y, 006Z
Greensclough	009A, 009B, 009C, 009D, 009E, 009F, 009G, 009H, 009I, 009J, 009K, 009L, 009M, 009N, 009O, 009P, 009Q, 009R, 009S, 009T, 009U, 009V, 009W, 009X, 009Y, 009Z
Healey and Whitworth	008A, 008B, 008C, 008D, 008E, 008F, 008G, 008H, 008I, 008J, 008K, 008L, 008M, 008N, 008O, 008P, 008Q, 008R, 008S, 008T, 008U, 008V, 008W, 008X, 008Y, 008Z

Links with other Strategies

The Play Strategy will make links with other strategies and themes adopted by Rossendale Borough Council.

Local Level:

- Community Strategy
- Health & Wellbeing LSP theme
- Environment LSP theme
- Community Safety LSP theme
- Culture & Leisure LSP theme
- Economy LSP theme
- Youth Provision Strategy
- Sports Strategy (working draft 2006)
- Open Space Strategy

Sub-Regional Strategies include:

- Ambition Lancashire 2005
- Lancashire Local Area Agreement 2006-2009

National Strategies include:

- PSA targets for Dept. of Culture Media & Sport
- Every Child Matters Sept 2003
- Youth Matters July 2005

Key Partners in Play Partnership

A cross cutting partnership between the local authority, the community, voluntary and faith sectors, together with other service providers has been formed to oversee and deliver Rossendale's Play Strategy. Figure 3 outlines all the organisations involved.

As the partnership develops and gathers momentum the structure of the group will be formalised and will have the function of project delivery, and evaluation, together with the role of monitoring the delivery and success of the Play Strategy. Members of the partnership may change as the Play Strategy develops and is adopted by other partner agencies.

Identifying the Good Links between the Play Advisory Group



KEY
 Hatched hexagons - Show where good links exist
 Bold font - Groups involved in Play Advisory Group Meetings

Consultation Process

We wanted to investigate if children preferred parks with fixed play equipment or if there were specific types of play provision that they preferred. We also wanted to know about issues or comments they had about their chosen places of play, for example, they may be limited by how far away from home they were allowed to travel unsupervised.

Children and young people

In order to determine where children played, a very basic questionnaire was compiled which asked children where they played, how they travelled to their chosen place for play and the things that were important to them when choosing a place for play.

- All primary schools within Rossendale were targeted via packs of questionnaires.
- Secondary schools were asked to complete on-line questionnaires.
- Secondary schools were also sent packs of questionnaires for distribution.
- Lunchtime sessions took place at certain secondary schools where children were asked to complete questionnaires.

A total of 1096 questionnaires were completed and analysed. This was a 6.15% return rate.

Councillors

Local councillors represent the needs of the community they serve and would be aware of any issues with regard to play facilities in the wards they served. Councillors were given the opportunity to feed into the Play Strategy. 23 of the Borough's 36 Councillors took part and all wards are represented.

General Public

The general public were also invited to comment through community forums, press adverts, Rossendale Alive newsletter, and via stands at local events such as the Rossendale Mela, Asda, and other consultation events.

Playground Inspector

The Playground Inspector for the Council has site responsibility for all play areas with play equipment. He was asked to comment on access issues / general improvements / and priorities for repair/ upgrade/ or closure of playgrounds based on need and usage and has provided particular insight from regular observance throughout the year.

Pre-school Children

Input was sought from 0—4 year olds. This was achieved with the help of Sure Start, Bacup. Results have been taken into account and have been fed into the recommendations.

Please see [Policies and Recommendations and appendix 3](#) for further information.

Gordon Street Consultation



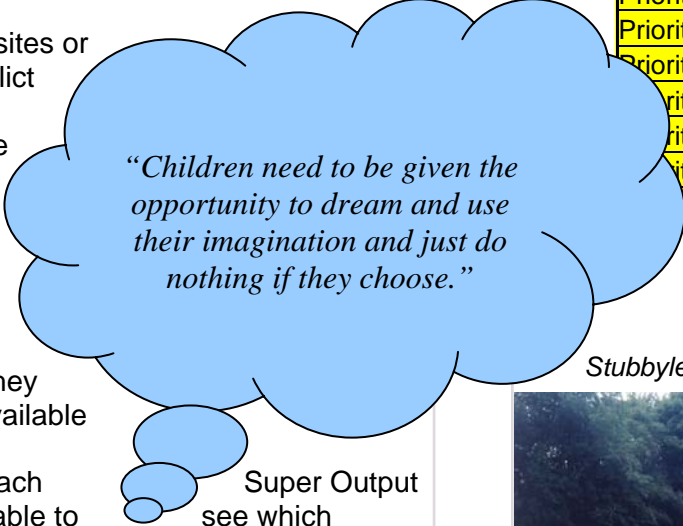
An Explanation of the Children's Consultation Results

Results from all the responses received were fed into a database and analysed.

From the results it is easy to see:

- Children and young people use the home and garden as their first choice for play and recreation.
- The second choice is the street.
- Local parks, playgrounds and play fields were third choice.
- Where parks are well maintained and have good quality play equipment, it was found that those facilities were well used.
- Children will play out in the open fields and countryside around Rossendale when given permission to do so by parents.
- Younger children feel threatened or uncomfortable when using play areas adjacent to facilities provided for teenagers.
- Children would like to be able to take part in more organised sports activities if given the opportunity
- Where youth clubs, Scouts, Brownies and other such groups are available, they are well-used by younger children, however teenagers do not participate.

- Very young children tended to play at home or close to home on the street.
- Children tended to use their local park or play area, rather than travel further afield to the larger neighbourhood parks.
- Neighbourhood parks, such as Whitaker and Stubblelee Park, were used by all age ranges and people would travel by car to get there.
- In general, all the neighbourhood parks were all said to be lacking in facilities although they did offer space to play.
- Most children walked to their chosen place for play. The car was used to travel to the larger parks.
- The bus is rarely used for travelling to a park or play facility.
- Where open spaces are well-defined, maintained and managed, children were happy to play in them as they felt safe and welcome.
- No building sites or sites of derelict land were named in the survey.
- Children would like to take part in organised sports activities if they made are available



By looking at each Area we were able to see which Super Output Area we were able to see which outdoor play facilities were most used and the improvements that each required. This Information was then collated at Ward level together with the feedback from the Play Inspector, local councillors and the Open Space audit carried out in 2006.

Priorities for improvements

From there, we were able to make detailed recommendations for improvements within each ward. This information is valuable in enabling RBC to target resources directly where improvements will have greatest impact.

A Priority Matrix was produced using population and deprivation figures, the availability of free facilities and whether there was any coverage in that area by an existing play facility.

We also looked at Section 106 agreements, whether existing facilities conformed to government recommendations and whether the Play

Inspector felt there was a need for new facilities in any particular area.

Based on the above scoring system the wards have been prioritised as shown below:

Priority 1	Worsley
Priority 2	Longholme
Priority 3	Cribden
Priority 4	Irwell
Priority 5	Hareholme
Priority 6	Stacksteads
Priority 7	Greenfield
Priority 8	Helmshore
Priority 9	Goodshaw
Priority 10	Whitewell
Priority 11	Greensclough
Priority 12	Healey and Whitworth
Priority 13	Facit & Shawforth
Priority 14	Eden

Stubblelee Park, –skate park-consultation event



From the above priority list, a full programme of work has been developed for each ward with a time-scale for delivery. See page 13.

What's Happening in My Ward and When?

It is easy to see from this table the programme of work planned for Rossendale and the time-scale..

Year for Delivery

Worsley 1st Priority Ward		
Priority 3 - Worsley Park See Quick Fix's (Natural Play Workshops)	Worsley Park Rising Bridge	2007 - 2008 2007 - 2010
Priority 1 - Laburnum Street See Quick Fix's	Removal of Laburnum St and landscape	2008 - 2009
Priority 4 - Relating to Greenfield Ward	Greenfield Memorial Gardens	2008 - 2009
Priority 2 - Clegg St	Clegg St Issues (Re-siting in Long shoot area, accompanied with homezoning)	2008 - 2010
Priority 3 - Worsley Park Green Flag Status	Worsley Park	2009 - 2010
Play Area creation in Long Shoot Area		2009 - 2010
Rising Bridge - Upgrade		2011 - 2012
Home Zoning On Longshoot Area		2013 - 2016
1 school - Access to school grounds		2020 - 2021

Longholme 2nd Priority Ward		
Priority 1 - Whitaker Park Phase 1	Whitaker Park	2007 - 2008
Priority 1 - Whitaker Park Phase 2	Whitaker Park	2008 - 2009
Priority 2 - See committed work (Natural Play Workshops)	Improve access to open countryside, through path improvements / signage General Area	2007 - 2008 2007 - 2010
Fallbarn - Upgrade		2017 - 2018
1 school - Access to school grounds		2019 - 2020

Cribden 3rd Priority Ward		
Priority 1 - Sunnyside Play Area (Natural Play Workshops)	Sunnyside Play Area Loveclough	2007 - 2008 2007 - 2010
1 school - Access to school grounds		2018 - 2019

Irwell 4th Priority Ward		
Gordon Street		2005 - 2006
Rossendale Crescent		2005 - 2006
Hawthorn Road		2005 - 2006
Thorn Bank - Removed		2006 - 2007
Gordon Street - Youth Provision (Natural Play Workshops)	Britannia	2007 - 2008 2007 - 2010
Priority 1 - Homezone - Blackthorne	Home Zoning Principles, Blackthorne and / or Pennine Road as initial priority	2008 - 2009
Priority 2 - Britannia Play Area - See Committed Work		2008 - 2009
1 school - Access to school grounds		2017 - 2018

Hareholme 5th Priority Ward		
Cloughfold Recreation Ground - See Quick Fixes		2007 - 2008
Hareholme Flats Play Area - Remove? Consultation to begin (Natural Play Workshops)	General Area	2007 - 2008 2007 - 2010
Priority 2 - Youth facility to complement existing shelter	Youth provision Staghills Youth Shelter	2008 - 2009
Priority 1 - Staghills Home Zoning	Home Zoning Principles, Staghills as initial priority	2009 - 2010
1 school - Access to school grounds		2016 - 2017

What's Happening in My Ward and When?

Stacksteads 6th Priority Ward	Delivery Date
Cutler Crescent - Improved	2003 - 2004
Western Park - See Quick Fixes (Natural Play Workshops) - General Area	2007 - 2010
Improved Streetscene / Access / Homezone Principles	2010 - 2015
1 school - Access to school grounds	2015 - 2016

Greenfield 7th Priority Ward	
Greenfield Memorial Gardens - Green Flag Status	2007 - 2008
(Natural Play Workshops) - General Area	2007 - 2010
Ratcliffe Pocket Park - Upgrade	2012 - 2013
Haslingden Centre (Youth Provision)	2012 - 2014
Hillside estate - Home zoning	2012 - 2015
1 school - Access to school grounds	2014 - 2015

Helmshore 8th Priority Ward	
Rutland Way / The Orchard - Re-classify (No Play Equipment)	2007 - 2008
Clod Lane - Quick Fixes	2007 - 2008
Alden Close - Quick Fixes	2007 - 2008
(Natural Play Workshops) - General Area	2007 - 2010
Victoria Park - Green Flag Status	2008 - 2009
Helmshore Park	2009 - 2010
1 school - Access to school grounds	2013 - 2014

Goodshaw 9th Priority Ward	
Loveclough Park - Quick Fixes	2007 - 2008
(Natural Play Workshops) - General Area	2007 - 2010
Hill Street - Upgrade	2009 - 2010
Adelaide Street - Removal? Date Refers to consultation	2011 - 2012
Moller Ring	2011 - 2013
1 school - Access to school grounds	2012 - 2013
Loveclough Park - Upgrade	2012 - 2014
Hamer Avenue - Upgrade	2018 - 2019

Whitewell 10th Priority Ward	Delivery Date
Water Play Quick Fix - Up to standard	2006 - 2007
Mullards - Removal - Replace area aimed at youth (civic space)	2007 - 2008
Edgeside Park Quick Fix - Up to standard	2007 - 2008
Lumb Play Area - Quick fix	2007 - 2008
(Natural Play Workshops) - Water	2007 - 2010
Edgeside Park - Green Flag Status	2011 - 2012
1 school - Access to school grounds	2011 - 2012
Water Play Upgrade	2012 - 2015
Whitewell Bottom - Youth Provision	2013 - 2015
Lumb Play Area - Upgrade	2016 - 2017
Cowpe - Upgrade	2018 - 2019

Greensclough 11th Priority Ward	
Rockcliffe Play Area - Removal	2007 - 2008
Weir - Upgrade	2007 - 2008
Priority 3 - Stubblelee / Moorlands - Youth Provision	2007 - 2008
Home Zoning - Blackthorn and / or Pennine	2007 - 2009
Rockcliffe Meadows	2007 - 2009
(Natural Play Workshops) - Weir	2007 - 2010
Priority 3 - Stubblelee / Moorlands - Green Flag Status	2009 - 2010
1 school - Access to school grounds	2010 - 2011
Knowsley Crescent Play Area	2013 - 2014
Sharneyford - Play Area	2015 - 2017
Maden Rec	2018 - 2020

Healey and Whitworth 12th Priority Ward	
Masseycroft (MUGA Youth Provision)	2005 - 2006
Festival Park (Play Area)	2006 - 2007
Festival Park (Youth Provision)	2007 - 2008
(Natural Play Workshops) - General Area (Spodden Valley)	2007 - 2010
1 school - Access to school grounds	2009 - 2010
Broadley / Station Rd Play Area	2011 - 2012
Valley View - Home Zone	2015 - 2020

Facit & Shawforth 13th Priority Ward	Delivery Date
(Natural Play Workshops) - General Area	2007 - 2010
1 school - Access to school grounds	2008 - 2009

Eden 14th Priority Ward	Delivery Date
1 school - Access to school grounds	2007 - 2008
Edenfield Play Area - Quick Fix - Up to Standard	2007 - 2008
Turn Play Area Quick Fix - Up to Standard	2007 - 2008
Edenfield Memorial Garden - See Quick fixes	2007 - 2008
(Natural Play Workshops) - Irwell Vale and Turn	2007 - 2010
Irwell Vale - Support Group in saving village Green	2007 - 2010
Edenfield Play Area Upgrade (Link to com centre)	2010 - 2011
Chatterton Recreation Ground - Upgrade	2014 - 2015
Turn Play Area Quick Fix - Upgrade	2016 - 2018

By looking at the above table it is possible to see what is happening in each ward and the time-scale up to year 2020. This information will be useful to councillors and the general public. Work may be delayed for projects if funding is not secured or there is objection to certain plans from the public when consultations are carried out.

A more detailed action plan for all play facilities in Rossendale has also been produced. See page 16-25.

We have produced a List of Policies and Recommendations, to enable us to effectively implement the Play Strategy. See page 26-32.

Monitoring and Evaluation Plan

There is a need to monitor the effective delivery of the Play Strategy and determine whether the needs of the local population have been met. This can be done via consultation at the start and end of each project.

Appropriate monitoring procedures will be developed and implemented as an ongoing and integral part of service delivery and will include active involvement of service users in identifying and responding to children's needs.

Reporting process

A progress report will be presented to the play partnership / forum every 3 months, utilising a traffic light system which will highlight actions completed, those currently being delivered and those behind schedule. Actions will be shared within the partnership and in turn progress will be reported to the LSP Culture Theme Group; again relevant actions will be shared.

Evaluation process

Monitoring indicators will be developed by the play partnership which may include some of the following (*currently need to be agreed both with the Play Partnership and LSP Culture Theme Group*):

- i) Area of land dedicated to play (of LEAP, LAP or NEAP standard) per person (0 – 19)
- ii) Funding secured
- iii) 106 monies secured
- iv) cost related to usage
- v) actual catchment area, as defined by users
- vi) numbers using and times spent at specific facilities
- vii) usage on the basis of gender, ethnicity, age, impairment
- viii) involvement of community groups
- ix) children and young people's satisfaction
- x) inclusive access
- xi) attainment of quality assurance standards by supervised provision

Given the complexity and variety of children's play opportunities, it is clear that every single play opportunity cannot be monitored. For many performance indicators monitoring may need to take place at a sample of local sites.

A community consultation on facilities in general might include a few questions on children's play. Schools may be assisted to undertake projects, which meet National Curriculum criteria on such subjects as geography and citizenship. Their findings may be related to performance indicators.

Year 1 Action Plan 2007 - 2008

<u>Project</u>	<u>Ward</u>	<u>Brief Detail</u>	<u>Esti- mated Cost</u>	<u>Project Lead</u>	<u>Partners</u>	<u>Beneficiaries</u>	<u>Funders/ Amounts</u>
Worsley Park – Phase 1	Worsley	Thinning and crown lifting of trees. Removal of vegetation (Rhododendrons). Vegetation clearance	£40,000	RBC	Play Partnership Haslingden Environment Trust Groundwork Probation	Residents	S 106 - £12,000 RBC - £5000 (GIK) Probation - £23,000 (GIK)
Play Inclusion Co-ordinators x 2 Part Time - Full Time Equivalent	All Wards	Employment of Play Inclusion Co-ordinators whose role would be to enable play to take place in rural areas through supervision. Play Workshops. Last 2 quarters. Including Advertisement fees and materials	£20,000	TBC	Play Partnership	Residents	BLF - £10,000 RBC (PDB) - £5,000 PCT - £5,000
Parks Development Project	All Wards	RBC commissioned Groundwork to work with com groups to work towards improving parks over three years (1st year 06/07)	£28,376	Groundwork	Play Partnership RBC	RBC	RBC - £28,376
Whitaker Park - Phase 1 Play Area	Longholme	Wider Park Improvements, with initial focus on improving play area for toddlers. Aim to be a flagship park, benefiting all in Rossendale - Overall aim for a green flag status.	£163,000	RBC	Play Partnership Groundwork Friends of Whitaker Park Group Civic Pride	Rossendale	BLF - £80,000 RBC - £28,000 Landfill - £23,000 FWPG - £12,000
Whitaker Park - Phase 1 Boundary Improve- ments	Longholme	Wider Park Improvements, with focus on boundary improvements through gift in kind work.	£30,000	RBC	Play Partnership Groundwork Friends of Whitaker Park Group Civic Pride	Rossendale	RBC - £15,000 (GIK) Probation - £15,000 (GIK)

Countryside Access	Longholme	Linking in with the access work from the Panopticon down to Whitaker Park via the proposed shoe trail and the play development officer.	£60,000	Mid Pennine Arts	Play Partnership Rossendale LT FWPG Groundwork HET	Rossendale	MPA - £60,000 BLF - £35,000 S 106 - £15,000 RBC - £21,500 LCC - £20,000 Landfill - £48,500
Sunnyside Play Area	Cribden	Improvements to Play Area and improved wider access issues solved	£140,000	RBC	Cribden Neighbourhood Association Civic Pride Groundwork Play Partnership	Residents	ELEVATE - £70,000
Gordon Street - Youth Provision	Irwell	Extend recent playground improvements to serve young people living on the Blackthorne Estate.	£70,000	RBC	Blackthorne Residents Association Bacup Consortium Play Partnership	Residents	LCC - £1,500
Cloughfold Recreation Ground	Hareholme	Treatment of Japanese Knotweed from Picnic Area	£1,500	CRAG		Residents	RBC - £9,000
Western Park	Stacksteads	Extend hard surfacing to make it inclusive of all equipment. Erect high fence on side of road to prevent balls from going on the road	£10,000	RBC	Play Partnership Groundwork	Residents	NA
Rutland Way	Helmshore	Reclassify	£0	RBC	Play Partnership Groundwork	NA	RBC - £4,000
Clod Lane	Helmshore	Extension of tarmac from pavement to park and from path to play area (Approx 10m2)	£4,000	RBC	Play Partnership Groundwork	Residents	RBC - £5,000 (GIK) RBC - £1000
Alden Close	Helmshore	Paint bin, seat and fencing Repair perimeter paths. Trim hedges and set aside some land for biodiversity. Siting of youth shelter on Loveclough Recreation Ground.	£6,000	RBC	Play Partnership Groundwork	Residents	S 106 - £40,000
Loveclough Park	Goodshaw	Propose to remove the Play Area. Replace with a usable, interesting civic space aimed at young people.	£40,000	RBC	Play Partnership Groundwork	Residents	Local Net F - £7000 RBC (Not Play Budget) - £10,000 LCC - £10,000 Landfill - £23,000
Mullards	Whitewell		£50,000	RBC	Play Partnership Groundwork	Residents School Children	

Edgeside	Whitewell	Play Area requires seating	£1,500	RBC	Play Partnership Groundwork	Residents	RBC - £1500
Lumb Play Area	Whitewell	Access near to gate to be hard surfaced	£2,000	RBC	Play Partnership Groundwork	Residents	RBC - £3000
Rockcliffe Play Area	Greensclough	Consultation and Removal of Play Equipment. Replace with landscaped area, which will encourage the use of the area for creative play.	£15,000	RBC	Play Partnership Groundwork	Residents	ELEVATE - £15,000
Weir	Greensclough	Upgrade of play area and youth provision, with improved access	£166,000	RBC	Play Partnership Groundwork School	Residents	Play Idea - £40,000 WRG - £25,000 Landfill - £65,000 S 106 - £36,000
Stubbylee	Greensclough	Youth Provision - Further improvements to Wheeled Sport Area	£30,000	Residents Group	RBC	Residents	Com Group - £30,000
Ratcliffe Pocket Park	Worsley	Remove and replace slide with new. Improve boundary with fencing and gating	£4,000	RBC	Play Partnership Haslingden Environment Trust Groundwork	Residents	RBC - £4000
Blackthorne	Greensclough	Consultation RE Homezoning to allow and make safer street play	£1,500	RBC	Play Partnership Blackthorne Residents Association Groundwork	Residents	ELEVATE - £1500
Rockcliffe Meadows	Greensclough	Provision of amenity green space. Improve access to / alternative routeway from road. Natural Play Space	£200,000	REMADE	Bacup Consortium RBC Play Partnership Groundwork	Residents	REMADE (LCC) - £200,000
Festival Park	Healey and Whitworth	Youth Provision to complement the new children's play area	£60,000	Whitworth Town Council	CLAW RBC Play Partnership Groundwork	Residents	RBC (Not Play Budget) - £40,000 WTC - £20,000
Access To School Grounds	Eden	Encourage access into school grounds to allow free play to take place	£0	School (LCC)	Play Partnership Groundwork	Residents	NA

Edenfield Play Area	Eden	Requires seat within fenced area. Improve access into site for wheelchairs. Planting to screen nearby houses	£5,000	RBC	Edenfield Resident Association Play Partnership Groundwork	Residents	RBC - £5000
Turn Play Area	Eden	New Seat and fencing at the entrance to play area	£2,500	RBC	Turn Village Association Play Partnership Groundwork	Residents	RBC - £2500
Edenfield Memorial Garden	Eden	Install Bin	£500	RBC	Play Partnership Groundwork Edenfield Residents Association	Residents	RBC - £500

Quick Fixes
Revenue Based
Full Upgrade of Fixed Play Facility
Removal of Fixed Play Facility
Delivery Associated With Play by Partners

Funders	Amounts
RBC Play Area Budget	£80,000
RBC Parks Development Budget	£33,376
RBC Other Budget	£50,000
RBC (GIK)	£25,000
Section 106	£103,000
Big Lottery Fund	£125,000
Whitworth Town Council	£20,000
REMADE (LCC)	£200,000
LCC	£31,500
ELEVATE	£86,500
Community Group - Stubbylee	£30,000
Landfill	£166,500
WRG	£25,000
Playful Ideas Programme	£40,000
Local Network Fund	£7,000
Friends of Whitaker Park	£12,000
PCT	£5,000
Probation (GIK)	£38,000
Mid Pennine Arts	£60,000
TOTAL	£1,137,876

Year 2 Action Plan 2008 - 2009

<u>Project</u>	<u>Ward</u>	<u>Brief Detail</u>	<u>Estimated Project Lead</u>	<u>Partners</u>	<u>Beneficiaries</u>	<u>Funders/ Amounts</u>
Laburnum Street	Worsley	Consultation and Removal of Play Equipment. Replace with landscaped area, which will encourage the use of the area for creative play.	Rossendale Borough Council (RBC)	Play Partnership Haslingden Environment Trust Groundwork	Residents	RBC - £5000 (GIK) RBC - £10,000
Greenfield Memorial Gardens	Greenfield	Improve Park with an emphasis on the Play Area and Youth Provision	RBC	Friends of GMG HET Groundwork Play Partnership	Residents	BLF - £55,000 RBC - £32,000 Vet Fund - £20,000 Landfill - £66,000 LCC - £25,000
Play Inclusion Co-ordinators x 2 Part Time - Full Time Equivalent	All Wards	Employment of Play Inclusion Co-ordinators whose role would be to enable play to take place in rural areas through supervision. Play Workshops.	TBC	Play Partnership	Residents	BLF - £10,000 RBC - £7,500 PCT - £7,500
Parks Development Project	All Wards	RBC commissioned Groundwork to work with com groups to work towards improving parks over three years (1st year 06/07)	Groundwork	Play Partnership RBC	RBC	RBC - £25,876
Clegg Street	Worsley	Consultation and Removal of Play Equipment. Replace with landscaped area, which will encourage the use of the area for creative play. The long shoot area should be assessed for play provision. In conjunction with removal. Home-zoning is recommended also.	Rossendale Borough Council (RBC)	Play Partnership Haslingden Environment Trust Groundwork	Residents	RBC - £10000 RBC - £5000(GIK)
Hareholme Flats Play Area - Removal	Hareholme	Propose to remove the Play Area. Consultation should start in this financial year.	RBC	Play Partnership Groundwork	Residents	£0

Whitaker Park - Phase 2	Longholme	Wider Park Improvements with a focus on youth provision. Overall aim to be a flagship park, benefiting all in Rossendale - Aim for a green flag status.	£175,000	RBC	Play Partnership Groundwork Friends of Whitaker Park Group Civic Pride	Rossendale	S 106 - £110,000 RBC - £25,000 Landfill - £30,000 FWPG - £10,000
Blackthorne	Irwell	Work with LCC to instate home-zones within the estate area.	£300,000	LCC	Play Partnership Groundwork RBC Blackthorne Residents Association Bacup Consortium	Residents	LCC Highways - £300,000
Britannia Play Area	Irwell	Improve Play Area to get the standard up to a LEAP standard. Shift position to be closer to road and include elements of youth provision	£120,000	RBC	Play Partnership Groundwork Britannia Residents Association School	Residents	ELEVATE - £50,000 Playful ideas - £70000 (Apply in Nov 07)
Staghills Youth Facility	Hareholme	New / simple Youth Facility to complement the new youth shelter (06/07). Smaller budget. Dependent on consultation, but could be kick wall, improved open area.	£40,000	RBC	Play Partnership Groundwork Staghills Resident Association LCC	Residents	LCC - £10,000 Landfill - £15000 Group Fundraise - £5,000 RBC - £3000 Local Network Fund - £7000
Victoria Park	Helmshore	Work towards whole park improvements. Green Flag status. May not achieve in this particular year. May go into 09 - 11 (V. Large Project)	£700,000	RBC	Play Partnership Groundwork Friends of Victoria Park? Haslingden Environment Trust	Residents	Parks for People - £700,000
Access To School Grounds	Eden	Encourage access into school grounds to allow free play to take place	£0	School (LCC)	Play Partnership Groundwork	Residents	NA

Quick Fixes
Revenue Based
Full Upgrade of Fixed Play Facility
Removal of Fixed Play Facility
Delivery Associated With Play by Partners
Development of Home Zone

Funders	Amounts
RBC Play Area Budget	£80,000
RBC Parks Development Budget	£33,376
RBC Other Budget	£0
RBC (GIK)	£10,000
Section 106	£110,000
Big Lottey Fund	£65,000
LCC	£35,000
ELEVATE	£50,000
Community Group - FWPG (10k) + Staghillis (5k)	£15,000
Landfill	£106,000
Veterans Fund (Greenfield)	£20,000
Playful Ideas Programme	£70,000
Local Network Fund	£7,000
PCT	£7,500
LCC Highways	£300,000
Parks for People	£700,000
TOTAL	£1,608,876

Year 3 Action Plan 2009 - 2010

<u>Project</u>	<u>Ward</u>	<u>Brief Detail</u>	<u>Estimated Cost</u>	<u>Project Lead</u>	<u>Partners</u>	<u>Beneficiaries</u>	<u>Funders/ Amounts</u>
Play Inclusion Co-ordinators x 2 Part Time - Full Time Equivalent	All Wards	Employment of Play Inclusion Co-ordinators whose role would be to enable play to take place in rural areas through supervision. Play Workshops.	£25,000	TBC	Play Partnership	Residents	BLF - £10,000 RBC - £7,500 PCT - £7,500
Parks Development Project	All Wards	RBC commissioned Groundwork to work with com groups to work towards improving parks over three years (1st year 06/07)	£25,876	Groundwork	Play Partnership RBC	RBC	RBC - £25876
Worsley Park	Worsley	Work towards whole park improvements. Green Flag status. May not achieve in this particular year. May go into 10 - 12 (V. Large Project)	£700,000	RBC	Play Partnership Groundwork Haslingden Environment Trust	Residents	Parks for People - £600,000 RBC - £30,000 Other Funds - £90,000
Whitaker Park Phase 3	Longholme	Wider Park Improvements. Aim to be a flagship park, benefiting all in Rossendale - Aim for a green flag status.	£400,000	RBC	Play Partnership Groundwork Haslingden Environment Trust	Residents	Parks for People - £400,000
Staghills - Homezoning	Hareholme	Work with LCC to instate homezones within the estate area.	£300,000	LCC	Play Partnership Groundwork RBC Blackthorne Residents Association Bacup Consortium	Residents	LCC Highways - £300,000
Helmshore Park	Helmshore	Work towards whole park improvements. Green Flag status. May not achieve in this particular year. May go into 10 - 12 (V. Large Project)	£400,000	RBC	Play Partnership Groundwork Haslingden Environment Trust	Residents	Parks for People - £300,000 RBC - £10,000 Other Funds - £90,000

Hill Street	Goodshaw	Consultation and upgrade of park. May go over a two year period, if including fundraising	£100,000	RBC	Play Partnership Groundwork Crawshawbooth Environment Group	Residents	RBC - £30000 Landfill - £25,000 LCC - £15,000 S106 - 10000
Stubbylee / Morlands Parks	Greenslough	Work towards whole park improvements. Green Flag status. May not achieve in this particular year. May go into 10 - 12 (V. Large Project)	£500,000	RBC	Play Partnership Groundwork Bacup Consortium Stubbylee Park Steering Group	Residents	Parks for People - £400,000 RBC - £10,000 Other funds - £90,000
Access To School Grounds	Healey and Whitworth	Encourage access into school grounds to allow free play to take place	£0	School (LCC)	Play Partnership Groundwork	Residents	NA

Quick Fixes
Revenue Based
Full Upgrade of Fixed Play Facility
Removal of Fixed Play Facility
Delivery Associated With Play by Partners
Development of Home Zone

Funders	Amounts
RBC Play Area Budget	£80,000
RBC Parks Development Budget TBC	£33,376
RBC Other Budget	£0
RBC (GIK)	£0
Section 106	£10,000
Big Lottey Fund	£10,000
LCC	£15,000
Landfill	£25,000
PCT	£7,500
LCC Highways	£300,000
Parks for People	£1,300,000
Other funds	£270,000
TOTAL	£2,050,876

Action Plan 2010 - 2015

Project	Ward	Year
Access to School Grounds	Greensclough	2010 - 2011
Edenfiled Play Area Update	Eden	2010 - 2011
Improved Streetscene / Access / Homezone	Stacksteads	2010 - 2015
Rising Bridge	Worsley	2011 - 2012
Adelaide Street Removal	Goodshaw	2011 - 2012
Edgeside Park - Green Flag	Whitewell	2011 - 2012
Access to school grounds	Whitewell	2011 - 2012
Broadley / Station Rd Play Area	Healey and Whitworth	2011 - 2012
Moller Ring Play Area	Goodshaw	2011 - 2013
Radcliffe Pocket Park	Greenfield	2012 - 2013
Access to School Grounds	Goodshaw	2012 - 2013
Haslingden 'Centre' - Youth Provision	Greenfield	2012 - 2014
Loughclough Park	Goodshaw	2012 - 2014
Hillside Estate - Home Zoning	Greenfield	2012 - 2015
Water Play Area	Whitewell	2012 - 2015
Access to School Grounds	Helmshore	2013 - 2014
Knowsley Crescent Play Area	Greensclough	2013 - 2014
Whitewell Bottom - Youth Provision	Whitewell	2013 - 2015
Access to School Grounds	Greenfield	2014 - 2015

Quick Fixes
Revenue Based
Full Upgrade of Fixed Play Facility
Removal of Fixed Play Facility
Delivery Associated With Play by Partners
Development of Home Zone

Action Plan 2015 - 2020

Project	Ward	Year
Access to School Grounds	Stacksteads	2015 - 2016
Sharneyford	Greensclough	2015 - 2017
Valley View - HomeZone	Healey and Whitworth	2015 - 2020
Access to School Grounds	Hareholme	2016 - 2017
Lumb Play Area	Whitewell	2016 - 2017
Turn Play Area	Eden	2016 - 2018
Fallbarn	Longholme	2017 - 2018
Access to School Grounds	Irwell	2017 - 2018
Access to School Grounds	Cribden	2018 - 2019
Hamer Avenue Play Area	Goodshaw	2018 - 2019
Cowpe	Whitewell	2018 - 2019
Maden Rec	Greensclough	2018 - 2020
Access to School Grounds	Longholme	2019 - 2020
Access to School Grounds	Worsley	2020 - 2020

Quick Fixes
Revenue Based
Full Upgrade of Fixed Play Facility
Removal of Fixed Play Facility
Delivery Associated With Play by Partners
Development of Home Zone

TASK	ACTIONS	LEAD	TIMESCALE (Year)
General			
We will increase the numbers of disabled children and young people accessing mainstream play schemes throughout the Borough. This will be achieved by employing a Play Inclusion Co-ordinator to provide inclusive play training and ongoing support for mainstream play scheme providers.	Make links with relevant agencies to identify specific actions to increase access for this target group. Links to all sectors to be made.	Play Partnership Play Inclusion Co-ordinator	2007/08
Good mainstream play provision is accessible, welcoming, and engaging for all children and young people including those who are disabled or have specific needs and wishes. We will follow DDA 1995 recommendations when planning access to new facilities and will make improvements to existing facilities to allow inclusion for all.	To identify training needs and ensure that relevant professionals (landscape architects / designers) adhere to DDA 1995 recommendations. To identify training needs within the play partnership. The play partnership will act as the accountable body to the designs of any play area, to ensure DDA 1995 recommendations are being adhered to.	Play Partnership Play Inclusion Co-ordinator	2007/08
We will create outdoor play provision that is innovative and creative. There will be more emphasis towards using natural materials such as wood, sand, rock, integrated where possible, with the surrounding natural environment with native plants, shrubs and trees to create buffer zones. Other materials such as tyres, nets and ropes will also contribute to making more exciting play spaces.	To identify training needs and ensure that relevant professionals (landscape architects / designers) are well informed of various types of play through 'natural means' within a variety of settings. To inform local communities of the natural material option during the consultation stages and promote discussion through imagery on this subject.	Play Partnership Play Inclusion Co-ordinator	2007/08 - 2020
We will encourage homezoning within new developments and in regeneration areas. Home zones are streets, where people and vehicles share space safely and equally. They can include traffic calming measures, reconfiguring the road, and the installation of benches, planting, play and informal sports areas. Ideally, they are designed – according to local need and with active community participation in order to encourage people of all ages to use and enjoy the public space in their immediate environment. Home Zones are attracting funding from a range of environmental and regeneration budgets. Well-designed Home Zones, developed with the participation of children and young people and their families as well as the wider community. Our research has found that most young people play within their local environment so the creation of Home Zones could potentially be a major part of the solution to creating play-friendly	Establish links to the relevant agency (LCC Highways) and promote discussion on the priority areas RE home zoning in Rossendale. Sustain links with relevant agency and strengthen links with partners / individuals who support these priority areas. Any new developments should be considered for homezoning or buffer zoning. Links and advice should be submitted to the planning department.	Play Partnership Play Inclusion Co-ordinator	2007/08 - 2020

<p>We will endeavour to create Buffer zones in mixed development areas in Rossendale. Hard edges are rare in nature, yet we have often created sharp transitions between play areas, with little thought to the impact this may cause to the surrounding community. These impacts can be avoided by cushioning the edges of the Play Areas / Home Zones with Buffer Zones. The creation of Buffer Zones is particularly important where mixed housing is located in order to mitigate noise nuisance etc. The buffer zone can consist of mixed planting of indigenous trees and shrubs that also have the additional benefit of improving the biodiversity of urban areas and so create a more natural play area for children.</p>	<p>Establish links with housing associations to provide advice on creating buffer zones within areas of mixed residency i.e old / young and known conflicts of interest occur stemming from street play. Quick fixes should be identified as part of advice and a longer term plan to manage the conflict worked towards. Any new developments should be considered for homezoning or buffer zoning. Links and advice should be submitted to the planning department.</p>	<p>Play Partnership Play Inclusion Co-ordinator</p>	<p>2007/08 - 2020</p>
<p>We will ensure children and their parents feel sufficiently confident in their local environment that children are able to play freely outdoors, with minimal adult involvement.</p>	<p>With any new development in relation to play local communities will be fully consulted in the development and involved in the process leading up to implementation. New play areas will be marketed and sign posted using a variety of means through the press, leafleting, celebration events. and other forms of media.</p>	<p>Play Partnership Play Inclusion Co-ordinator</p>	<p>2007/08 - 2020</p>
<p>We will support and encourage the voluntary sector to meet the needs of the local people and to increase participation across all communities. A wide range of sports and facilities are provided in the borough by charitable, voluntary and community groups. We will provide support and work with such agencies to encourage the use of facilities for informal recreation when these facilities are not in use.</p>	<p>Establish links with a vareity of targeted landowners to encourage use / marketing of areas with means to free play. EG sports centre fields etc.</p>	<p>Play Partnership Play Inclusion Co-ordinator</p>	<p>2007/08 - 2020</p>
<p>We will continue to work in partnership with the public, private and voluntary sectors to manage and maintain our parks and open spaces. We will ensure they are safe, welcoming and accessible. This may require the introduction of new signage and information boards to ensure people are aware of facilities within a park or play area</p>	<p>Identify current means of play that require better signage and information. (LINK TO OPEN SPACE STRATEGY). Create a simple action plan and prioritse where signage and signposting is essentila and work to. Make links with play inclusion co-ordinator and Parks Development Team.</p>	<p>RBC</p>	<p>2007/08 - 2020</p>
<p>We will review our open space and play strategies on a regular basis</p>	<p>Mini - Reviews' will be conducted every three years as towards the action plan on delivery upto 2020. This will involve reminding original inputters of the startegy the chance to view and comment on delivery and prioroites. The Play Partnership will be responsible for reveiwing, changing and agreeing the new direction.</p>	<p>Play Partnership Play Inclusion Co-ordinator</p>	<p>2007/08 - 2020</p>

All council owned open spaces and play provision will be subject to audit using the quality checklists established in the Open Space Review document.	Relevant council officers will be responsible to audit specific areas. Information will be used to update and feed into the review of the Play Strategy and Open Space Strategy	RBC	2010 / 2013 / 2016 / 2019
Funding			
We will endeavour to source and provide capital and revenue funding to refurbish and maintain public facilities to a high standard. We will work in partnership with other organisations to invest in community facilities.	Work towards the action plan as set out in the strategy. Needs to be reviewed as part of the review process. Contingency funders need to be identified.	Groundwork	All years
We will endeavour to use section 106 development monies to invest in priority areas for play	Relevant RBC officers need to be aware of potential 106 situations and refer to the Play Strategy for guidance. The Play Partnership must continue to liaise with relevant RBC staff to ensure that guidance is being used. The Play Inclusion Co-ordinator and Groundwork Rosendale as fund finders must take note and pursue for section 106 if relevant to the Play Strategy Action Plan. To liaise with RBC Planning department.	Play Partnership Play Inclusion Co-ordinator	All years
Parks & Play Areas			
We will seek to gain Green Flag status for all three district parks: Whitaker Park, Stubblee Park and Victoria Park. This policy is also relevant to the Open Space strategy and will be discussed further in that document.	Continue to consult and fundraise for these parks; paying particular attention to the Parks for People funding through the Big Lottery. To be developed over two to three years including a number of parks throughout Rosendale.	Groundwork	2007 /2010
We will ensure there is a range of play opportunities for children and young people of all ages, abilities and interests when planning new facilities or when making improvements to existing facilities. We recognise that young children will feel intimidated by older children/ teenagers and so we will aim to take these issues into consideration when planning new facilities and improving existing facilities.	Targeted consultation is required with every new proposed means of play. Consultation should be directed at children and young people and also involve adults and parents. Please refer to the consultation plan for guidance within the Strategy.	Groundwork	All years
We will protect existing formal outdoor recreation facilities such as existing parks, gardens and sports fields except where recommendations within this strategy identify the need to either remove a facility due to safety considerations or to change its use i.e. from play area to community garden.	Targeted consultation is required with every proposed removal of play equipment. Consultation should be directed at children and young people and also involve adults and parents. Please refer to the consultation plan for guidance within the Strategy. Areas are encouraged to be left to allow free play to occur i.e grassed and use of other natural materials i.e boulders and mounds etc.	Groundwork	All years

We will aim to improve those facilities which do not meet the standards we adopt such as the LAP, LEAP & NEAP standards recommended by the NPFA for play areas.	On improving / creating means of fixed play facilities. Relevant professionals (i.e. Landscape Architects) should abide by the guidance as set out in the NPFA publication.	Groundwork	All years
Children and young people of different ages have different play interests and needs. We will aim to include provision for all age ranges when planning new facilities and when improving existing facilities.	Targeted consultation is required with every new proposed means of play. Consultation should be directed at children and young people and also involve adults and parents. Please refer to the consultation plan for guidance within the Strategy. The demographics of the area should be analysed in order to ensure there is a true representation in the results found .	Groundwork	All years
Consultation should take place when planning new facilities or improvements to existing facilities. We will consult people of all age ranges and take into consideration the needs of the whole community when planning new facilities. Local population demographics within Super Output Areas will be considered when planning a new facility as it is not always possible to attract certain types of people to consultation events.	See actions above	Groundwork	All years
Teenagers, very young children, hard to reach groups such as ethnic minorities, travellers, special needs, disabled or older people are difficult to target when planning consultation events. The consultation should be a true reflection of the needs of the whole local population and priorities within Super Output Areas will also be used to make decisions about types of play provision.	See actions above	Groundwork	All years
<u>After School/ Extended school provision</u>			
We will recognise and acknowledge the important role that play and play services have in children's development.	Make contact and sustain input 'into and out of' the Play Partnership and give support if resources allow.	Play Service Providers	All Years
We will actively involve local play services and providers in partnership and sub-groups.	Make contact and sustain input 'into and out of' the Play Partnership and give support if resources allow.	Play Service Providers	All Years
We will ensure playwork training is available to childcare workers (<i>DfES and QCA approved play-work qualifications.</i>)	Make contact and sustain input 'into and out of' the Play Partnership and give support if resources allow.	Play Service Providers	All Years

We will Promote play services through their programmes by expanding the number of out-of-school childcare places.	Make contact and sustain input 'into and out of' the Play Partnership and give support if resources allow.	Play Service Providers	All Years
We will support and encourage existing Extended School Services to roll out open access to school grounds for free play, with proper attention to solving issues surrounding liabilities.	Make contact via the Extended Schools Officer or through the recently formed Primary and Secondary Heads forums to work with and increase opportunity. If necessary supervised play could be considered.	Play Partnership Play Inclusion Co-ordinator	All Years
We will encourage existing Extended School Services and partners to provide supervised opportunities for free play through the use of out of school hours school grounds.	Make contact via the Extended Schools Officer or through the recently formed Primary and Secondary Heads forums to work with and increase opportunity. If necessary supervised play could be considered.	Play Partnership Play Inclusion Co-ordinator	All Years
We will work with play services to consult with children.	Links will be made in various localities if specific improvements are envisaged to take place.	Play Partnership Play Inclusion Co-ordinator	All Years
Provision aimed at Pre-School children (See Appendix 3)			
We recommend the development and improvement of existing 'play spaces' which would improve the accessibility and use for pre- school children. I.e. Improved cycleway Networks, pretend roads within parks and home zoning.	Relates to inclusivity. Through relevant training to ensure that landscape architects include facilities and activities aimed at very young children are considered and are appropriately placed. The Play Partnership should be accountable to ensure this takes place. Play Inclusion Co-ordinator should continue to make links and feed information to relevant agencies as 'other' projects develop in order to integrate play into the infrastructure of Rossendale.	Play Partnership Play Inclusion Co-ordinator Groundwork, RBC	All Years
Any new development associated with play will (if appropriate) be inclusive of this particular age range.	See above	Play Partnership Play Inclusion Co-ordinator Groundwork, RBC	All Years
Any improvements especially within larger parks facilities such as baby changing and sheltered feeding spots will be considered.	See above	Play Partnership Play Inclusion Co-ordinator Groundwork, RBC	All Years

Housing Association and Estate Areas			
The layout design of mixed affordable housing should be such that play in the road/street is safe.	Housing associations should follow the suggested guidance within the left hand column when attempting to tackle conflicts of interest associated with play. Play Inclusion Officer will make contact with known HA's, highlight the relevant section on play within mixed residencey areas. and offer limited support. HA's should make contact with the Play Partnership in order to seek guidance and direction.	Housing Association	All Years
Buffer zones or housing frontages should be designed so that the natural play activities of children do not conflict with other residents. Done with planting, walls, railings, wide verges, orientation of front doors and layout design.	Housing associations should follow the suggested guidance within the left hand column when attempting to tackle conflicts of interest associated with play. Play Inclusion Officer will make contact with known HA's, highlight the relevant section on play within mixed residencey areas. and offer limited support. HA's should make contact with the Play Partnership in order to seek guidance and direction.	Housing Association	All Years
Assess where the nearest play facility is located and its standard noted so that planning obligations can be considered where relevant.	Housing associations should follow the suggested guidance within the left hand column when attempting to tackle conflicts of interest associated with play. Play Inclusion Officer will make contact with known HA's, highlight the relevant section on play within mixed residencey areas. and offer limited support. HA's should make contact with the Play Partnership in order to seek guidance and direction.	Housing Association	All Years
Consult the residents on the formation and maintenance of community gardens.	Housing associations should follow the suggested guidance within the left hand column when attempting to tackle conflicts of interest associated with play. Play Inclusion Officer will make contact with known HA's, highlight the relevant section on play within mixed residencey areas. and offer limited support. HA's should make contact with the Play Partnership in order to seek guidance and direction.	Housing Association	All Years

<p>Assess other pockets of useable open space near by and consult the residents over a dual use.</p>	<p>Housing associations should follow the suggested guidance within the left hand column when attempting to tackle conflicts of interest associated with play. Play Inclusion Officer will make contact with known HA's, highlight the relevant section on play within mixed residency areas. and offer limited support. HA's should make contact with the Play Partnership in order to seek guidance and direction.</p>	<p>Housing Association</p>	<p>All Years</p>
<p>Section 106</p>			
	<p>Relevant RBC Officers should follow the suggested guidance within the left hand column when dealing with Section 106 situations. Play Inclusion Officer will make contact with Planning Officers and highlight the relevant section on play and offer support and direction on specific proposals. RBC planning department should make contact with the Play Partnership in order to seek guidance and direction. PLEASE REFER TO PAGES 31 - 37 OF THE FULL STRATEGY DOCUMENT.</p>	<p>RBC - Planning Department</p>	<p>All Years</p>

Conclusion

This document is written to bring the case for play into the public arena.

An effective strategy for the Borough will:

- Promote longer term, more cross-cutting partnership working
- Develop strong leadership and support fro play
- Promote and develop commitment to play at a strategic level
- Promote and develop inclusivity
- Enhance decision making and service provision





Groundwork Rossendale
Rossendale Borough Council