

Quartile Positions - 2003/4 - 2006/7

BVPI Code	BVPI Title	Good Performance	2003/04 Outturn	2003/04 Quartile Position	Direction of Travel	2004/05 Outturn	2004/05 Quartile Position	2004/5 All England	Direction of Travel	2005/6 Outturn	2005/06 Quartile Position	2005/6 All England	Direction of Travel	2006/7 Outturn	2006/7 Quartile Position All England	
CORPORATE HEALTH																
BV 2a	Equality Standard for Local Government	High				1			↑	2			↔	2	N/A	
BV 2b	Duty to Promote Race Equality	High	55.00	BQ	↓	52.63	2nd	3rd	↑	58	2nd	3rd	↔	58	BQ	
BV 8	Percentage of invoices paid on time	High	76.20	BQ	↑	84.1	BQ	BQ	↑	84.14	BQ	BQ	↓	76.37	BQ	
BV 9	Percentage of Council Tax Collected	High	94.30	BQ	↑	96.1	BQ	BQ	↑	96.37	BQ	BQ	↑	96.84	3rd	
BV 10	Percentage of non-domestic rates collected	High	97.80	BQ	↓	97.5	BQ	BQ	↑	98.29	BQ	3rd	↑	98.8	3rd	
BV 11a	Top 5% earners: women	High	13.05	BQ	↑	34.93	TQ	2nd	↑	62.5	TQ	TQ	↓	60.24	TQ	
BV 11b	Top 5% earner: minority ethnic communities	High	4.35	TQ	↑	4.99	TQ	TQ	↓	0	2nd	3rd	↔	0	BQ	
BV 11c	Top 5% earners: with a disability	High	New 2005/6								7.84	TQ	TQ	↑	10.04	TQ
BV 12	Working days lost due to sickness absence	Low	10.5	2nd	↓	12.62	BQ	BQ	↓	13.53	BQ	BQ	↑	6.96	TQ	
BV 14	Percentage of early retirements	Low	1.06	BQ	↓	1.68	BQ	BQ	↓	3.69	BQ	BQ	↑	3.43	BQ	
BV 15	Percentage of ill health retirements	Low	0.43	3rd	↓	0.48	3rd	BQ	↓	1.34	BQ	BQ	↑	0	TQ	
BV 16a	Percentage of employees with a disability	High	5.2	2nd	↓	4.73	TQ	TQ	↑	4.76	TQ	TQ	↑	5.71	TQ	
BV 16b	Percentage of economically active disabled community population	N/A	17.90				17.9	contextual			17.9			↔	17.9	N/A
BV 17a	Percentage of black and ethnic minority employees	High	1.48	BQ	↓	1.25	3rd	3rd	↑	1.67	2nd	3rd	↑	2.4	2nd	
BV 17b	Percentage of economically active minority ethnic community population	N/A	3.80				3.8	contextual			3.8			↔	3.8	N/A
BV 156	Buildings accessible to people with a disability	High	76.00	TQ	↑	79	2nd	TQ	↔	79		polarity removed	↑	92		

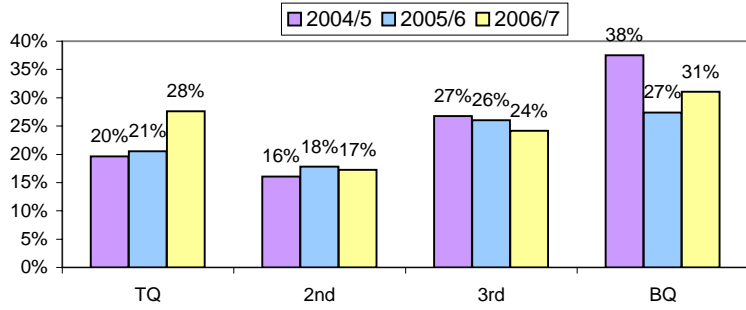
BVPI Code	BVPI Title	Good Performance	2003/04 Outturn	2003/04 Quartile Position	Direction of Travel	2004/05 Outturn	2004/05 Quartile Position	2004/5 All England	Direction of Travel	2005/6 Outturn	2005/06 Quartile Position	2005/6 All England	Direction of Travel	2006/7 Outturn	2006/7 Quartile Position All England	
HOUSING																
BV 64	Number of private sector dwellings returned into occupation	High	20	TQ	↑	27	TQ	2nd	↑	30	2nd	2nd	↑	35	3rd	
HOMELESSNESS																
BV 183a	Length of stay in temporary accommodation – B&B	Low	7.5	3rd	↑	0	TQ	TQ	↓	7	BQ	BQ	↑	3.21	3rd	
BV 183b	Length of stay in temporary accommodation – Hostel	Low	3	2nd	↓	5	2nd	2nd	↑	1	2nd	2nd	↑	0	TQ	
BV 202	Number of Rough Sleepers	Low	Not Collected			3	contextual		↑	0	TQ	TQ	↔	0	TQ	
BV 203	Number of Families in Temporary Accommodation	Low	Not Collected			-50.00	TQ TQ		↓	57.14	BQ	BQ	↑	0	3rd	
BV 213	Housing Advice Service: Preventing Homelessness	High	New 2005/6								0.08	BQ	BQ	↑	1	BQ
BV 214	Repeat Homelessness	Low	New 2005/6								1.83	2nd	2nd	↑	0	TQ
HOUSING BENEFIT & COUNCIL TAX BENEFIT																
BV 76a	Housing Benefit Security – Number of claimants visited per 1000 caseload	N/A	17.16	BQ		62.93	BQ	BQ		207.36				267.75	N/A	
BV 76b	Housing Benefit Security – Number of investigators per 1000 caseload	N/A	0.34			0.27	contextual			0.25				0.23	N/A	
BV 76c	Housing Benefit Security – Number of investigations per 1000 caseload	N/A	38.05	BQ		30.42	3rd	3rd		28.18				33.85	N/A	
BV 76d	Housing Benefit Security – Number of prosecutions and sanctions per 1000 caseload	N/A	1.53	BQ		2.4	BQ	3rd		6.24				7.45	N/A	
BV 78a	Speed of processing new claim to HB/CTB	Low	61.47	BQ	↑	43.59	BQ	3rd	↑	39.5	BQ	BQ	↑	37.6	BQ	
BV 78b	Speed of processing changes of circumstances to HB/CTB	Low	14.94	BQ	↑	7.44	2nd	TQ	↓	21.4	BQ	BQ	↑	19.3	BQ	
BV 79a	Accuracy of HB/CTB claims	High	98.00	2nd	↔	98	2nd	2nd	↓	96.8	BQ	3rd	↑	97.4	3rd	

BVPI Code	BVPI Title	Good Performance	2003/04 Outturn	2003/04 Quartile Position	Direction of Travel	2004/05 Outturn	2004/05 Quartile Position	2004/5 All England	Direction of Travel	2005/6 Outturn	2005/06 Quartile Position	2005/6 All England	Direction of Travel	2006/7 Outturn	2006/7 Quartile Position All England	
BV 79b i	Overpayments recovered as % of all HB overpayments	High									64.88	3rd	3rd	↑	76.5	2nd
BV 79b ii	Recovery of overpaid benefit	High	45.85	3rd	↓	29.20	BQ	BQ	↑	38.73	2nd	2nd	↓	27.3	3rd	
Bv 79b iii	Overpayments written off as % of total HB overpayment	Low	Amended 2005/6								17.41			↓	25.49	N/A
WASTE & CLEANLINESS																
BV 199a	Local street and environmental cleanliness - Litter and Detritus	Low	23.00	3rd	↑	20	3rd	3rd	↑	18	3rd	3rd	↑	12	2nd	
BV 199b	Local street and environmental cleanliness - Graffiti	Low	New 2005/6								2	3rd	2nd	↑	1	TQ
BV 199c	environmental cleanliness - Fly-post	Low	New 2005/6								1	BQ	2nd	↔	1	BQ
BV 199d	Local street and environmental cleanliness - Fly-tipping	Low	New 2005/6								454				3	2nd
BV 82a i	Recycling - (% of household waste)	High	11.22	3rd	↑	16.48	2nd	2nd	↑	17.71	3rd	2nd	↑	21.29	2nd	
BV 82a ii	Tonnage of household waste recycled	High	Amended 2005/6								4399.81	BQ	BQ	↑	5286.1	BQ
BV 82b i	Composting - (% of household waste)	High	4.11	2nd	↑	5.40	2nd	2nd	↑	6.04	3rd	3rd	↑	6.85	3rd	
BV 82b ii	Tonnage of Household waste composted	High	Amended 2005/6								1500.54	3rd	BQ	↑	1701.82	BQ
BV 84a	Household waste collected (kgs per resident)	Low	393.34	2nd	↑	377.06	TQ	TQ	↑	377	TQ	TQ	↑	376.2	TQ	
BV 84b	Household Waste Collection: % change	Low	Amended 2005/6								-0.01	3rd	3rd	↑	-0.2	2nd
BV 86	Cost of household waste collection per household	Low	40.86		↑	39.99	2nd	2nd	↑	34.17	TQ	TQ	↓	38.8	TQ	
BV 91a	% of population served by kerbside collection of recyclables	High	91.00	3rd	↑	95	3rd	3rd	↔	95	3rd	3rd	↓	94.9	BQ	

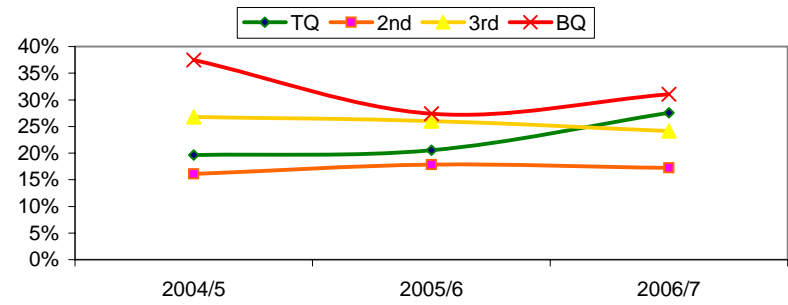
BVPI Code	BVPI Title	Good Performance	2003/04 Outturn	2003/04 Quartile Position	Direction of Travel	2004/05 Outturn	2004/05 Quartile Position	2004/5 All England	Direction of Travel	2005/6 Outturn	2005/06 Quartile Position	2005/6 All England	Direction of Travel	2006/7 Outturn	2006/7 Quartile Position All England	
BV 91 b	Kerbside Collection of Recyclables: two recyclables	High	Amended 2005/6								95	3rd	3rd	↓	94.9	3rd
ENVIRONMENT & ENVIRONMENTAL HEALTH																
BV 166a	Environmental health checklist of best practice	High	47.50	BQ	↓	36.2	BQ	BQ	↑	88.8	3rd	3rd	↑	100	TQ	
BV 216a	Remediation of Contaminated Land	N/A	New 2005/6								450		polarity removed	↓	444	N/A
BV 216b	Information on Contaminated Land	Low	New 2005/6								3	2nd	2nd	↔	3	3rd
BV 217	Pollution Control Improvements	High	New 2005/6								60	BQ	BQ	↑	100	TQ
BV 218a	Abandoned vehicles - Investigation	High	New 2005/6								98.75	TQ	TQ	↑	100	TQ
BV 218b	Abandoned Vehicles - Removal	High	New 2005/6								100.00	TQ	TQ	↔	100	TQ
PLANNING																
BV 106	New homes on previously developed land	High	73.20	2nd	↓	73.02	2nd	3rd	↑	89.02	2nd	2nd	↓	31.58	BQ	
BV 109a	Planning applications: Major applications	High	50.00	3rd	↓	33	BQ	BQ	↑	36	BQ	BQ	↑	58.33	BQ	
BV 109b	Planning applications: Minor applications	High	70.00	2nd	↑	79	TQ	TQ	↓	74	3rd	3rd	↑	77.78	2nd	
BV 109c	Planning applications: 'Other' applications	High	86.00	TQ	↑	93	TQ	TQ	↓	92	TQ	TQ	↓	90.98	2nd	
BV 200a	Plan Making – Development Plan	N/A	Amended 2005/6								Yes			↔	Yes	N/A
BV 200b	Plan Making - Milestones	N/A	Amended 2005/6								No			↔	No	N/A
BV 200c	Plan Making – Monitoring Report	N/A	Amended 2005/6								Yes			↔	Yes	N/A
BV 204	Planning Appeals	N/A	Not Collected				35	3rd	3rd		43	BQ	BQ		36.4	3rd
BV 205	'Quality of Planning Services' Checklist	High	Not Collected				27.78	BQ	BQ	↑	44	BQ	BQ	↑	88.9	BQ
BV 219a	Conservation Numbers - Number		New 2005/6								8				8	N/A

BVPI Code	BVPI Title	Good Performance	2003/04 Outturn	2003/04 Quartile Position	Direction of Travel	2004/05 Outturn	2004/05 Quartile Position	2004/5 All England	Direction of Travel	2005/6 Outturn	2005/06 Quartile Position	2005/6 All England	Direction of Travel	2006/7 Outturn	2006/7 Quartile Position All England	
BV 219b	Conservation Areas - Character Appraisals	High	New 2005/6								0.00	BQ	BQ	↔	0	BQ
BV 219c	Conservation Areas - Management Plans	High	New 2005/6								0	2nd	2nd	↔	0	BQ
CULTURE & RELATED SERVICES																
BV 170a	Visits to/usage of museums per 1000 population	High	138.41	3rd	↓	76.12	BQ	BQ	↑	150	3rd	3rd	↑	167	BQ	
BV 170b	Visits to museums in person per 1000 population	High	139	3rd	↓	73.92	3rd	BQ	↑	149	3rd	3rd	↑	167	3rd	
BV 170c	Visits to museums & galleries by pupils in organised groups	High	54	BQ	↑	93	BQ	BQ	↑	491	3rd	BQ	↑	708	BQ	
COMMUNITY SAFETY & WELL-BEING																
BV 126	Domestic burglaries per 1000 household	Low	Amended 2005/6								10.18	BQ	3rd	↑	9.2	3rd
BV 127a	Violent Crime per 1000 population	Low	Amended 2005/6								17.45	3rd	3rd	↑	14.8	2nd
BV 127b	Robberies per 1000 population	Low	Amended 2005/6								0.41	3rd	2nd	↑	0.4	2nd
BV 128	Vehicle crimes per 1000 population	Low	Amended 2005/6								11.85	BQ	3rd	↑	11	3rd
BV 174	Racial incidents per 100,000 population	N/A	4.56			4.55	contextual			3.03				1	N/A	
BV 175	Racial incidents with further action	High	33.00	BQ	↔	33	BQ	BQ	↑	100	TQ	TQ	↔	100	TQ	
BV 225	Actions against Domestic Violence	High	Amended 2005/6											45	N/A	
BV 226a	Advice and Guidance Services: Total Expenditure	N/A	Amended 2005/6											225043	N/A	
BV 226b	Advice and Guidance Services: CLS Quality Mark	High	Amended 2005/6											31.71	N/A	
BV 226c	Advice and Guidance Services: Direct Provision	N/A	Amended 2005/6											20169	N/A	

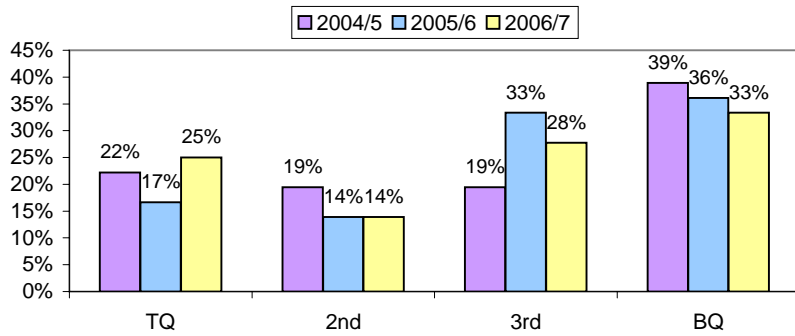
Quartile Positions for previous 3 years



Quartile Positions - 3 year trend



Quartile Positions - Comparing like-for-like over previous 3 years



Quartile Positions - 3 Year like-for-like trend

