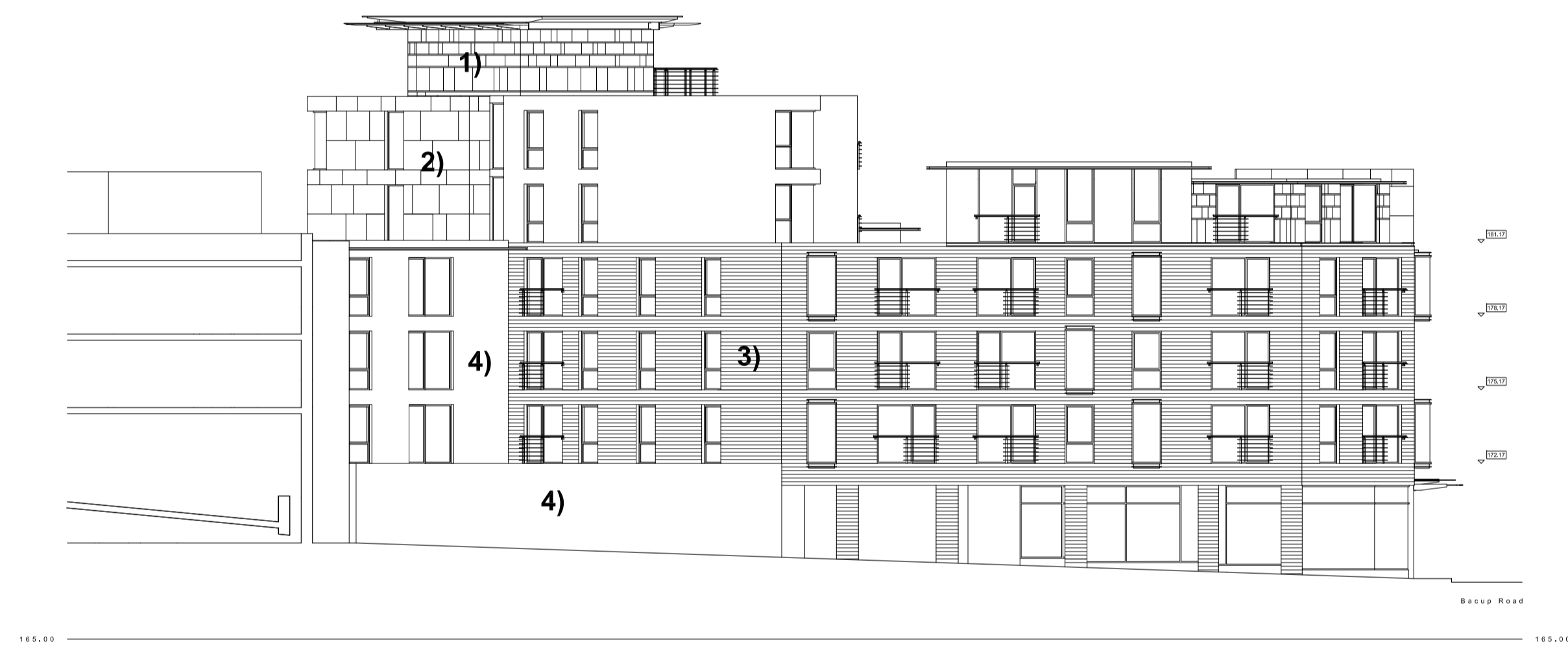
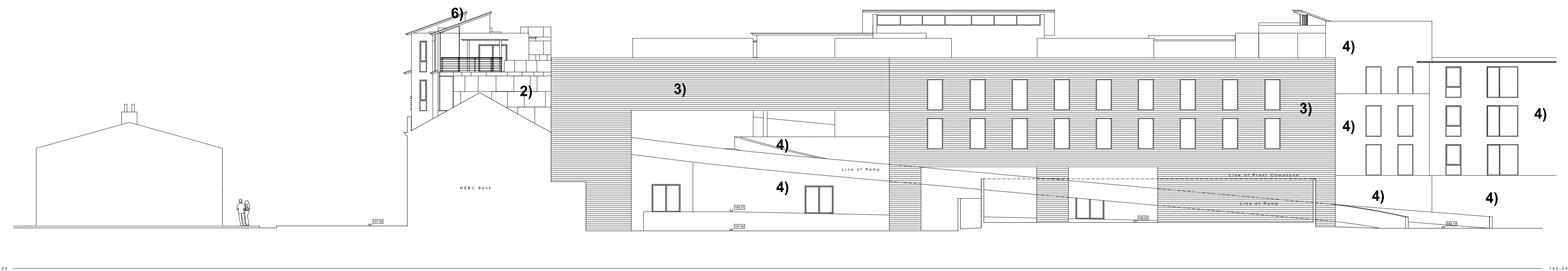


ELEVATION 7 - BACUP ROAD



ELEVATION 8 - JAMES STREET



ELEVATION 9 - CAR PARK

- 1) Natural Slate coursed between stainless steel channels
- 2) Natural Stone Rainscreen cladding Watson Stonecraft or similar
- 3) Natural Sandstone Masonry 150mm Coursing
- 4) Render
- 5) Grey Stained Timber Shopfront Frame (All Shopfronts)
- 6) Natural Slate on Mono-pitch roofs
- 7) Grey Polyester-coated Aluminium window frames (All windows)

- A 31.10.2007 - DM - Slate cladding added. Levels amended to EA requirements
- B 14.11.2007 - DM - Door/window amendments
- C 21.12.2007 - DM - Material change to Bacup Road elevation