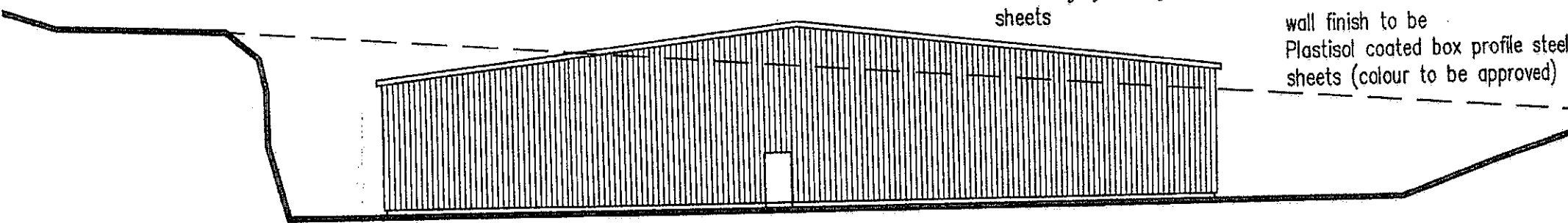


**elevation from south**

broken line indicates line of horizon indicating extent of visibility of building as seen in silhouette from distance

roof finish to comprise  
fibre cement Big Six  
natural grey corrugated  
sheets

wall finish to be  
Plastisol coated box profile steel  
sheets (colour to be approved)



**elevation from north**

broken line indicates line of horizon indicating extent of visibility of building as seen in silhouette from distance

