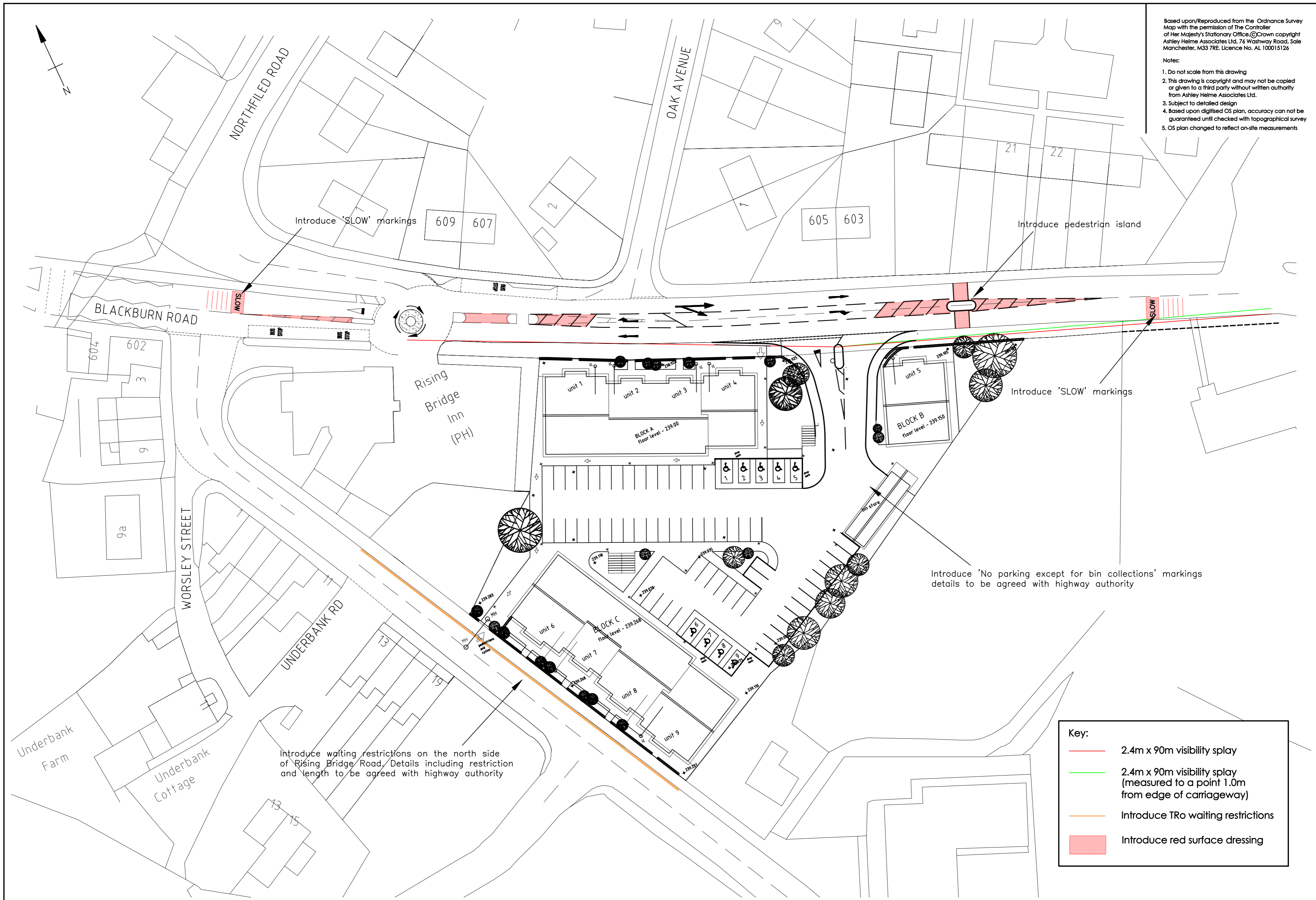


Based upon/Reproduced from the Ordnance Survey Map with the permission of The Controller of Her Majesty's Stationary Office. © Crown copyright Ashley Helme Associates Ltd, 76 Washway Road, Sale Manchester, M33 7RE. Licence No. AL 100015126

Notes:

1. Do not scale from this drawing
2. This drawing is copyright and may not be copied or given to a third party without written authority from Ashley Helme Associates Ltd.
3. Subject to detailed design
4. Based upon digitised OS plan, accuracy can not be guaranteed until checked with topographical survey
5. OS plan changed to reflect on-site measurements



Key:

- 2.4m x 90m visibility splay
- 2.4m x 90m visibility splay (measured to a point 1.0m from edge of carriageway)
- Introduce TRO waiting restrictions
- Introduce red surface dressing

Project	Rising Bridge
Client	Lancashire County Developments Ltd

Title	PROPOSED ACCESS ARRANGEMENTS
-------	------------------------------

ashleyhelme
associates
 76 washway road, sale, manchester, m33 7re
 email: aha@ashleyhelme.co.uk tel: 0161 972 0552 fax: 0161 972 0553

Drg No	1134/05	Rev	B
Date	October 2008	Scale	1:500@A2