

Community Impact Assessment Form

Name of Strategy/Policy:	LEISURE REVIEW Closure of Marl Pits Swimming Pool	
Officer Name(s):	Anita Hall/Vincent Hindley	
Job Title & Location:	Service Assurance Manager/Project Officer	
Department/Service Area:	Place Directorate	
Telephone & E-mail Contact:	01706 252587 anitahall@rossendalebc.gov.uk	
Date Assessment:	Commenced: 7th January 2009	Completed: Ongoing

1. Impact Assessment – Policy and Target Outcomes

- a) Main aims/objectives of the strategy, policy, procedure, project or decision.

Rossendale Borough Council is looking at leisure provision throughout the borough in the light of the current financial situation and the need to have quality, sustainable provision for the future. Various options are being considered. As part of this process, Community Impact Assessments have been produced and are continually being reviewed and added too.

This Impact Assessment examines the closure of the pool at Marl Pits and has been carried out in the context of a new pool being built in the Borough.

Marl Pits Swimming Pool was built in 1974. The pool's facilities are a 25 metre four lane swimming pool and a smaller pool for young children and learners. The pool is accessible to disabled users and has disabled toilet facilities. There is a small car park to the front which has 39 car parking spaces, two of which are designated disabled, but this is also utilised by users of the dry sports facilities and can sometimes lead to parking problems, leaving users having to park on the main road.

Level of use	
Year	Use
2007/08	118,157 visits
2006/07	114,709 visits

These figures were provided by Rossendale Leisure Trust and shows a 3.5% increase in usage. It should be noted that this is an increase in visits and does not necessarily demonstrate new users or number of customers. However, the PMP survey undertaken in 2006 illustrated that 82% of the Rossendale population had never used Marl Pits.

b) Is the policy, facility or decision under review (please tick)

New/proposed Modified/adapted Existing

c) Main groups identified as beneficiaries, targets or users of (or affected in any other way) this strategy, policy, project, procedure or decision?

Customers/citizens of the district
 Community Groups/Voluntary Sector Groups
 Rossendale Leisure Trust, including staff and employees

d) Equality groups identified as beneficiaries, targets or users of this policy/strategy/project/procedure, or affected in any other way.

Older people
 Multi-ability facility users
 Various school groups – See Appendix 4
 Various Swimming Clubs – See Appendix 4
 Other Swimming Sessions – Ladies Only, over 50’s Swim, Parent and Toddler Classes, Aqua Natal Classes, Adult and Child, Pre School (3-5 year old’s) and Parent and Toddler.
 The general users of the facility – No monitoring information is available.

e) Information considered regarding the communities affected by this.

Information on the breakdown of the population of Rossendale obtained from 2001 census data provided by the Office of National Statistics.

APPENDIX 1 Users of Marl Pits swimming pool by ethnic group

Section 1: Ethnic Groups in Rossendale by ward
Section 2: Rossendale Census wards 2001
Section 3: Location of swimming pool users
Section 4: Marl Pits Swimming Pool ethnic groups in surrounding wards

APPENDIX 2 Facility Usage provided by Rossendale Leisure Trust

APPENDIX 3 Comparison of services currently available at each swimming pool within Rossendale

Evaluation of Leisure Provision undertaken by PMP Team May 2006.

There are three swimming pools, serving the community, within the borough of Rossendale:

Marl Pits in Rawtenstall,
Whitworth Pool in Whitworth
Haslingden swimming pool in Haslingden.

APPENDIX 4: Marl Pits swimming pool provides supervised swimming classes for various schools within the borough.

The specialist needs of users from Tor View School and The Rays swimming Club.

It must be remembered that these users have special needs which may impact on the length of journey which can be undertaken. In addition the Rays Swimming Club are supported by volunteers or paid carers working currently on a Sunday afternoon.

Other considerations have been facilities available for multi-ability users within and outside of the Borough, travel, parking issues and whether various swimming sessions which are currently only provided at Marl Pits Pool can be accommodated elsewhere within the Borough.

f) Is further consultation, data collection or research still required?

Yes

No

Details

The Community Impact Assessment has been carried out in accordance with the evidence available.

Evidence has been provided for the Equality groups identified.

Research will be ongoing in relation to the users of the facilities and the impact assessment will be updated accordingly.

A consultation process has been undertaken and this is detailed at Appendix 6.

2. Impact – Evidence

a) Indicate whether there is evidence that the policy/strategy/decision has a negative, positive or neutral impact from an equalities perspective on any of the equality groups listed below.

		Positive Impact – it could benefit	Negative Impact – it could disadvantage	Reason	Neutral Impact (Neither)
Gender	Women		√	Over 50's Group. Adult and Child swimming lessons Aqua Natal Sessions	
	Men		√	Over 50's Group. Adult and Child swimming lessons	
Race (Ethnicity or Nationality)	Asian or Asian British people				√
	Black or black British people				√
	Chinese or other ethnic people				√
	Irish people				√
	White people				√
	Chinese people				√
	Other minority communities not listed above (please state)				√

		Positive Impact – it could benefit	Negative Impact – it could disadvantage	Reason	Neutral Impact (Neither)
Disability	Physical/learning/mental health		√	Rossendale RAYS Swimming Club Tor View School swimming sessions	
Sexuality	Lesbians, gay men and bisexuals				√
Gender Identity	Transgender people				√
Age	Older people (60+)		√	Over 50s Group	
	Younger people (17-25), and children		√	Adult and Child (Preschool) Swimming sessions. Children 3-5 yr olds swimming sessions.	
Belief	Faith groups				√
Other Groups	People with ill health issues – Referred by their GP.		√	GP Referrals	

3. Impact – Nature/Type

a) Could you further improve the strategy, project, policy, procedure or decision's positive or neutral impact? If "Yes", this should be detailed in the Action Plan.

YES NO

b) If you indicated that there is neutral impact, could this be changed to become positive?

YES NO

c) Mitigation of any adverse or negative impact(s) of the proposal, or how the policy, strategy, project, procedure or decision could be used to promote a positive impact. Does the proposal have a high or low impact.

These have been considered and are detailed within the action plan.

Actions arising from the impact assessment should form part of the Service Planning Process.

Key Actions:

Identify current users who require support identifying alternative venues – Communities Team

Alternative venues to be identified for all current facility users – Communities Team.

Cost implications of alternative facilities to be identified as part of the process – Communities Team.

Signposting/support in relation to potential grant application – Communities Team

4. Impact Assessment - Summary

a) Key Findings: Major outcomes/results/findings of this assessment in relation to equality which require action by the Council are detailed in the Action Plan

Key Findings:

Marl Pits currently provides swimming sessions for 21 schools and 3 swimming clubs from within the Borough. All but one of the Schools can be accommodated at Haslingden Pool. However, it is anticipated, that due to distance factors, some may choose to relocate to Whitworth Pool. Of the 3 swimming clubs currently operating at Marl Pits, 2 of these can also be accommodated with negotiations required around start times. This may impact on younger children using the classes. However, a Saturday morning alternative could be offered. Further consultation will be required with the swimming clubs. Comparable multi-ability facilities are not available at Haslingden to accommodate the special needs of all the users from Tor View School and Rays Swimming Club.

Alternative facilities have been considered for Tor View :

Haslingden Swimming Pool

The nearest pool to Tor View is Haslingden swimming pool, a journey of 1 mile which takes about 4 minutes to complete. There is no separate small pool at Haslingden and facilities for people with disabilities are restricted to a hoist at the poolside and a 'trixie lift' in the changing room. However, there are no separate changing facilities for people and their carers. If Marl Pits was to close and school swimming sessions merged at Haslingden, Tor View could not be accommodated in the proposed schedule without displacing a number of other schools, which may be accommodated at Whitworth. Haslingden may be unsuitable for some students, it would be dependent on the needs of the user.

Ramsbottom Pool

The journey from Tor View to Ramsbottom pool is 3.5 miles and takes about 9 minutes to complete via Ewood Bridge and Edenfield or 6 minutes to complete using the A56 Edenfield by-pass from Bent Gate to Stubbins. The pool could not accommodate Tor View due to timetabling and the lack of facilities which would not meet the needs of users from Tor View.

St. Peter's Centre, Burnley

The journey from Tor View to Burnley is 9.1 miles via the A682 and takes about 21 minutes to complete. Via the A56/M65, the journey is 11.5 miles and

takes about 19 minutes to complete. St. Peter's is currently accommodating additional groups because of the temporary closure of Padiham pool for refurbishment. This is due for completion in July 2009. St. Peters Centre could not accommodate Tor View School.

Hyndburn Sports Centre, Accrington

The journey from Tor View to Accrington is 6.9 miles and takes about 19 minutes to complete. Hyndburn could not accommodate Tor View students. Additionally, facilities for people with disabilities are very limited, with no hoist or changing bed and no specific disabled showers or changing rooms. Hyndburn would be unsuitable for Tor View School

Whitworth Swimming Pool

The journey from Tor View to Whitworth is 8.8 miles and takes about 25 minutes to complete. Tor View could not be accommodated at Whitworth pool for their current Tuesday morning slot, but Thursday or Friday mornings could be offered as an alternative. However, there is no disabled access ramp to the small pool and the only hoist is over the large pool. Disabled access to the small pool could be facilitated using movable ramps, but these would need to be sourced.

There are no specific changing facilities for people and their carers, but there is a family changing room within both the ladies and gentlemen's changing rooms which disabled swimmers and their carers currently use. Showers have been adapted with hand rails to assist people and there is accessible toilet provision within both changing rooms. Whitworth would be a suitable alternative but would depend on the needs of the student as travelling distance may be an issue. There would also be an increased cost in terms of distance travelled.

Castle Leisure Centre, Bury

The journey from Tor View to Bury is 10.1 miles and takes about 17 minutes to complete. Castle Leisure Centre has a full range of equipment for the assistance of swimmers with disabilities, but does not have any vacant slots for sole use of the pool. Each weekday morning from 09:00 – 12:00 is already committed to a mix of school and public swimming sessions. Castle Leisure Centre would not be suitable for Tor View School.

Alternative facilities have been considered for Rays Swimming Club.

Haslingden Swimming Pool

There is no separate small pool at Haslingden and facilities for multi-ability swimmers are restricted to a hoist at the poolside and a 'trixie lift' in the changing room.

There are no separate changing facilities for people and their carers. Currently Haslingden pool is not open to the public on Sunday afternoons but

is available for hire. Haslingden pool may be unsuitable for some club members, this would be dependent on the needs of the user.

Ramsbottom Pool

WAYS requirements could not be met at Ramsbottom on a Sunday afternoon as the pool is currently in use for lessons at that time. The specialist changing facilities available at Marl Pits are not available at Ramsbottom pool.

St. Peter's Centre, Burnley

St. Peter's Centre is currently accommodating additional groups because of the temporary closure of Padiham pool for refurbishment. This is due for completion in July 2009.

St. Peter's has a pool hoist and accessible changing rooms, but no changing bed.

St. Peter's Centre is therefore not available as an alternative.

Hyndburn Sports Centre, Accrington

Hyndburn cannot offer sole use for a 2 hours slot on Sunday afternoons because of existing commitments to a local swimming club. Additionally, facilities are very limited, with no hoist or changing bed and no specific showers or changing rooms.

Whitworth Swimming Pool

WAYS could be accommodated at Whitworth pool for their current Sunday afternoon. Although the pool is currently closed at this time, extending the opening hours to accommodate the club is not seen as a problem. However, there is no access ramp to the small pool and the only hoist is over the large pool. Access to the small pool could be facilitated using movable ramps, but these would need to be sourced. There are no specific changing facilities, but there is a family changing room within both the ladies and gentlemen's changing rooms which people and their carers currently use. Showers have been adapted with hand rails to assist people and there is adapted toilet provision within both changing rooms. This could be a short term alternative pending the building of the new pool. However club members have different needs and may live in different areas across the Borough and travelling has been identified as an issue.

Castle Leisure Centre, Bury

WAYS could not be accommodated at Castle Leisure Centre on a Sunday afternoon as this session is already booked out to Bury & Elton Swimming Club. The Centre has a full range of equipment for the assistance of swimmers.

Adult swimming lessons and all other swim sessions provided at Marl Pits i.e. Over 50's Swim, Ladies Only, various Aqua Aerobics/Mobility and GP referrals

can be accommodated at Haslingden Swimming Pool pending the building of the new pool.

Adult and Child sessions for pre school children, Children Swim Sessions (3-5 yrs) and Aqua natal cannot be accommodated at Haslingden. However, all could be accommodated at Whitworth Pool. Facilities also exist outside the borough at Ramsbottom.

All the above mentioned can be accommodated should a new facility be built, however in the short term there may be issues as highlighted throughout this impact assessment.

Haslingden Pool is on a main bus route with regular service and bus stops within easy reach of the facility. Transport issues are discussed further in Appendix 5. There may be car parking issues into the short term. The Council will be liaising with the County Council to see if a short term solution can be identified.

5. Impact Assessment – Further Action

a) Evaluation/ monitoring/ review process:

The impact assessment will be updated as issues are raised by Elected Members, facility users and members of the public.

The decision of the Council at the meeting of 26 February 2009 in relation to Marl Pits Swimming will impact on the implementation of the action plan. The detailed work programme will need to be developed following this meeting with timescales for review identified within it.

Monitoring of implementation will take place at the Programme Board and through Overview and Scrutiny.

Affected groups will be consulted as part of the development of any new facility to ensure that their needs will be met in the new facility.

Evaluation will continue as part of the project planning phase. A Steering Group will be established, if appropriate following the decision at Council.

Review Date: Ongoing

IMPACT ASSESSMENT ACTION PLAN

Please list below any recommendations for action that you plan to take as a result of this impact assessment

Issue	Action required	Lead officer	Timescale	Resource implications	Comments
Provision to accommodate Tor View School	Facilities do exist at Burnley and Ramsbottom however there is no availability. Facilities and availability is present at Whitworth Pool. Facilities would be available should a decision be taken to build a new pool.	G Hood/H Lockwood	31.03.2009	To establish	Timescale indicative only – To be reviewed following decision at Council meeting on 26 February 2009. Opportunity to use Whitworth Pool, however the distance may impact on some students ability to use the pool.
Provision to accommodate Rays Swimming Club	Facilities do exist at Burnley and Ramsbottom however there is no availability. Facilities and availability is available at Whitworth Pool. Facilities will be available should a new pool be built.	G Hood/H Lockwood	31.03.2009	To establish	Timescale indicative only – To be reviewed following decision at Council meeting on 26 February 2009. Opportunity to use Whitworth Pool, however it has been indicated that the distance may impact on club members ability to use the pool

Issue	Action required	Lead officer	Timescale	Resource implications	Comments
Adult and Child Swim	As Haslingden would be accommodating the majority of school sessions these would be offered at Whitworth. Facilities will be available should a new pool is built.	A Hall/V Hindley	31.03.2009	Within existing resources	Timescale indicative only – To be reviewed following decision at Council meeting on 26 February 2009. Whitworth Pool alternative
Pre School (Age 3-5)	As Haslingden would be accommodating the majority of school sessions these would be offered at Whitworth. Facilities will be available should a new pool be built.	A Hall/V Hindley	31.03.2009	Within existing resources	Timescale indicative only – To be reviewed following decision at Council meeting on 26 February 2009. Whitworth Pool alternative
Aqua Natal	As Haslingden would be accommodating the majority of school sessions these would be offered at Whitworth. Facilities will be available should a new pool be built	A Hall/V Hindley	14.2.2009	Within existing resources	Timescale indicative only – To be reviewed following decision at Council meeting on 26 February 2009. Whitworth Pool alternative

Issue	Action required	Lead officer	Timescale	Resource implications	Comments
Provision of adequate parking facilities at Haslingden Pool	Explore with Lancashire County Council possible solutions and how this can be addressed.	H Lockwood	31.03.2009	Within existing	<p>Timescale indicative only – To be reviewed following decision at Council meeting on 26 February 2009.</p> <p>This is to be explored further, pending a decision.</p>

Users of Marl Pits Swimming Pool by Ethnic Group

1. Data has been sourced from Lancashire County Council neighbourhood statistics, using 2001 Census information provided by the Office for National Statistics.
2. Additionally, survey data on the location of users of swimming pools has been drawn from work done by PMP Consultancy in Spring 2006.
3. Section 1 shows the breakdown of ward population by ethnic group.
4. Section 2 shows ward boundaries within the Borough.
5. Section 3 shows the location of swimming pool users in relation to current swimming pool provision and has been used as a guide to the wards representing the major users of Marl Pits Swimming Pool.
6. From this data it has been assumed that Marl Pits is predominantly used by residents of Cribden, Goodshaw, Hareholme, Longholme and Whitewell wards, and a breakdown of those ward populations by ethnic group is shown at Section 4.

Ethnic Groups in Rossendale by Ward

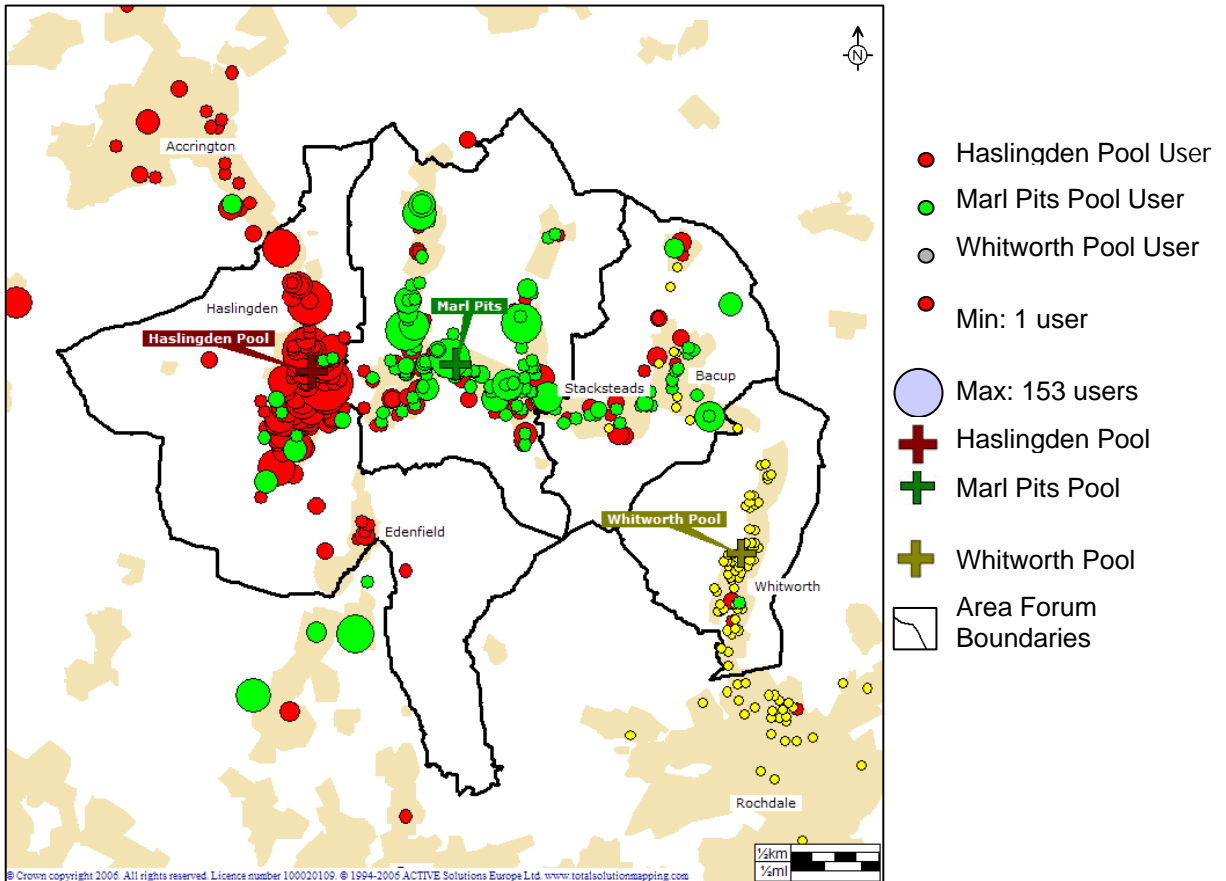
Facility	Marl Pits Swimming Pool					Haslingden Swimming Pool				Bacup Leisure Hall			Whitworth		Total	%
	Cribden	Goodshaw	Hareholme	Longholme	Whitewell	Eden	Greenfield	Helmshore	Worsley	Greensclough	Irwell	Stacksteads	Facit & Shawforth	Healey & Whitworth		
Asian or Asian British	270	12	273	286	19	16	382	48	632	16	24	17	8	9	2012	3.07
Black or Black British	3	5	4	9	3	4	6	6	3	3	0	3	3	4	56	0.09
Chinese or other ethnic people	0	3	0	0	3	0	10	4	3	0	3	0	3	0	29	0.04
Irish people	40	35	57	56	44	24	76	69	76	59	73	32	53	39	733	1.12
White people	3254	3497	5056	5135	5431	3444	4867	5500	4845	5252	4789	3734	3472	3578	61854	94.23
Chinese people	11	6	5	5	0	0	22	13	14	16	3	4	8	0	107	0.16
Other minority communities	50	36	74	67	49	58	94	86	97	48	69	41	41	39	849	1.29
Total	3628	3594	5469	5558	5549	3546	5457	5726	5670	5394	4961	3831	3588	3669	65640	

Source: Office for National Statistics – 2001 Census Data

Rossendale 2001 Census Wards



Location of Swimming Pool Users



Source: PMP Consultancy presentation, showing the residential location of swimming pool users surveyed in Spring 2006.

Marl Pits Swimming Pool – Ethnic Groups in Surrounding Wards

Ward	Cribden	Goodshaw	Hareholme	Langholme	Whitewell	Total	%
Asian or Asian British	270	12	273	286	19	860	3.61
Black or Black British	3	5	4	9	3	24	0.10
Chinese or other ethnic people	0	3	0	0	3	6	0.03
Irish people	40	35	57	56	44	232	0.97
White people	3254	3497	5056	5135	5431	22373	94.01
Chinese people	11	6	5	5	0	27	0.11
Other minority communities	50	36	74	67	49	276	1.16
	3628	3594	5469	5558	5549	23798	

Source: Office for National Statistics – 2001 Census Data

Rossendale on the Move

Usage comparison 2003-4 onwards

	<u>2003-4</u>	<u>2004-5</u>	<u>2005-6</u>	<u>2006-7</u>	<u>2007-8</u>
HSC	112,168	116,755	134,213	119,402	150,044
SR	64,248	95,235	105,995	84,285	85,787
HSP	87,699	85,880	94,504	79,701	98,788
MP	110,414	118,585	123,624	114,709	118,157
BLH	11,691	24,597	28,711	25,000	20,000
	<u>386,220</u>	<u>441,052</u>	<u>487,047</u>	<u>423,097</u>	<u>472,776</u>
		54,832	45,995	-63,950	49,679

Key:

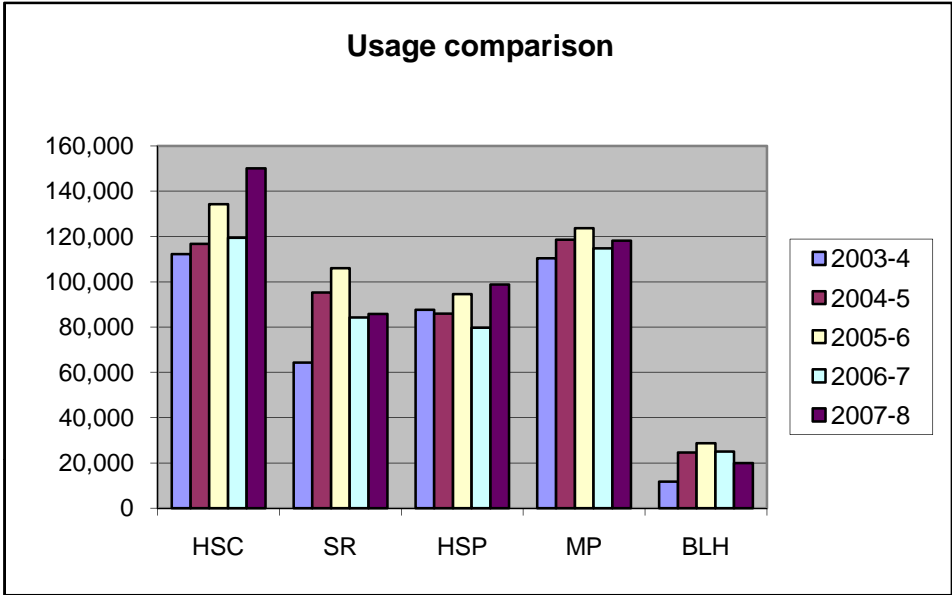
HSC = Haslingden Sports Centre

SR = Ski Rossendale

HSP = Haslingden Swimming Pool

MP = Marl Pits Swimming Pool

BLH = Bacup Leisure Hall



Notes:

1. Reason for decrease at Haslingden Swimming Pool 2006-07 due to removal of sunbeds the Trust takes view of recommendations by Environmental Health Officers and leading dermatologists; also concerned about potential risk from use of sunbeds which may lead to possible personal injuries claims.

Comparison of services currently available at each swimming pool within Rossendale

	Marl Pits Pool	Haslingden Pool	Whitworth Leisure Centre	New Pool
Monday	7.00 am – 9.30 pm	7.00 am – 9.30 pm	7.30 am- 8.00 pm	To be determined
Tuesday	12.00 pm – 9.00 pm	7.00 am – 9.00 pm	10.00 am -7.00 pm	
Wednesday	7.00 am – 9.30 pm	9.00 am – 9.15 pm	9.00 am – 7.00 pm	
Thursday	7.00 am – 9.00 pm	7.00 am – 9.30 pm	7.30 am – 8.00 pm	
Friday	7.00 am – 9.00 pm	7.00 am – 9.00 pm	10.00 am – 8.00 pm	
Saturday	8.00 am – 3.00 pm	9.00 am – 3.00 pm	9.00 am – 2.00 pm	
Sunday	9.00 am – 3.00 pm	8.00 am – 12.30 pm	9.00 am – 2.00 pm	

Session	Marl Pits Pool	Haslingden Pool	Whitworth Leisure Centre	New Pool
Early Birds Swim	✓	✓	✓ (Wake Up Whitworth)	✓
Ladies Only Swim	✓	✓	✓	✓
Over 50's Swim	✓	✓	✓	✓
Lunch Time Swim	✓	✓	✓	✓
Pool Pilates	✓	✓	X	✓
Public Swimming	✓	✓	✓	✓
Bacup Swim Club	✓	x	X	✓
Haslingden Swim Club	x	✓	X	✓
Rawtenstall Swim Club	✓	X	X	✓
Rays Swim Club	✓	x	x	✓
Adult Lessons	✓	x	✓	✓
Adult Only	✓	✓	✓	✓

Aqua Aerobics	✓	✓	✓ (Aqua Fit)	✓
Aqua Mobility	✓	X	X	✓
Aqua Aerobic Lite	✓	✓	✓ (Aqua Fit)	✓
Parent & Toddler	✓	✓	✓	✓
Aqua Natal	✓	X	X	✓
Laned Swimming	✓	✓	X	✓
Fun/Kids Session	✓	✓	✓ (Kids Hour)	✓
Family Fun	X (Fun Session)	X (Fun Session)	✓	✓
Under 5's & Accompanying Adults in Small Pool	✓	x	x	✓
Drop Off – Dip In	X	✓	X	✓
Schools	✓	✓	✓	✓
Pool Parties	✓	✓	✓	✓
Health Suite	X	✓	✓	✓
Junior Lessons	✓	✓	✓	✓
Sub Aqua	✓	✓	x	✓

School Swimming			
Day	School	Arrive	Depart
Tuesday	Tor View	9.00	12.00
LUNCHTIME			
	Holy Trinity	1.15	1.45
	St. Anne's	1.45	2.15
	Cribden House	2.15	2.45
Wednesday	Crawshawbooth	9.45	10.15
	* Thorn	10.15	10.45
	* Northern	10.45	11.15
	St. James the Less	11.15	11.45
LUNCHTIME			
	Water	1.15	1.45
	St. Peter's	1.45	2.15
	Balladen	2.15	2.45
Thursday	Newchurch	9.15	9.45
	St. Saviour's	9.45	10.15
	* Sharneyford	10.15	10.45
LUNCHTIME			
	Holy Trinity	1.15	1.45
	Cloughfold	1.45	2.15
	Waterfoot	2.15	2.45
	Leabrook Short Stay School	2.15	2.45
Friday	St. Mary's	1.15	1.45
	St. Joseph's	1.45	2.15
	Constable Lee	2.15	2.45

* it is anticipated that these schools would relocate to Whitworth Pool rather than Haslingden Pool.

Swimming Clubs			
Monday	Bacup Amateurs	6.30	9.30
Wednesday	Rawtenstall Amateurs	6.30	9.30
Sunday	Rosendale Rays	3.30	5.00

Leisure Review (Travel and Access to Leisure Sites)

1. Scope of Review

1.1 This document is intended to form a broad overview of the access to swimming facilities including distances to alternative sites, accessibility to public transport and prices for entry to alternative sites.

1.2 In preparing this note consideration has been made of the possible travel arrangements between various local population centres and the availability of swimming sites. It is not possible to include an exhaustive list of transport data from all possible locations for potential users. In order to provide a general guide a sample guide of possible journeys has been taken.

1.3 Travel data has been collected for six main sites, chosen to represent the broad population centres of the Borough. The sites chosen as starting points for travel to leisure facilities are Rawtenstall (main bus station); Bacup (main bus stop); Edenfield (bus stop and turning point adjacent to Rostron Arms); Haslingden (central crossroads); Whitworth (Market St/Tong Lane); Waterfoot (main bus stop). In utilising these sites it is intended that a sound basis for comparison may be drawn, without attempting to analyse the potential route of every possible customer.

1.4 The leisure sites included are the three current wet facilities in Rossendale (Marl Pits, Haslingden, Whitworth) and the facilities in Bury, Hyndburn, Burnley and Ramsbottom.

2. Travel Distances from Population Centre to Facility

2.1 Section 1 to this appendix includes the distances in miles, to the nearest tenth, by direct route from population centre to facility.

2.2 From central Rawtenstall there is currently access to 3 pools within 4 miles or less and 8 pools within a distance of 10.5 miles or less. The transport links and road network provide access to a large number of local facilities, although clearly Marl Pits, approximately half a mile from the town centre, is likely to be the favoured option of a customer travelling from home.

2.3 Direct routes from Bacup show two prime alternatives, Marl Pits and Whitworth, each within approximately 4 miles, with a further 3 facilities, Haslingden, Ramsbottom and Burnley, each with in 6-8 miles.

2.4 Nearest access from Edenfield is to Ramsbottom and Haslingden pools, both less than 3 miles away, with Marl Pits 4.4 miles and Castle Leisure Centre, Bury at 5.8 miles also close alternatives. The other four pools considered are

each 9-11 miles away and would seem unlikely to be preferred to the initial four when travelling from a home address.

2.5 Haslingden has, most obviously, Haslingden pool at a central location, with Marl Pits 3 miles away and Hyndburn Sports Centre & Ramsbottom Pool each approximately within 5 miles travelling.

2.6 Whitworth, again with its own local facility is the area most isolated from other alternatives. Only Marl Pits and Haslingden of the alternative sites are less than 10 miles away.

2.7 Waterfoot has access to Marl Pits, 1.3 miles away, Haslingden 3.6 miles, Ramsbottom & Whitworth, each approximately 5.5 miles away, with the other facilities all at least 8 miles away.

2.8 Clearly in all cases there is some alternative provision of pool facilities. In cases where there are approximately comparative alternatives, for example the choice between travelling to Whitworth or Rawtenstall for Bacup residents, there is scope for change in usage which would not have significant financial impact on users. However any change in usage of the 3 main sites which are within minimal or walking distance from population centres would clearly impact those customers who would require public or private transport if no such need currently exists.

3. Public Transport Access

3.1 Information on public transport access to the various sites has been obtained from web based journey planners. Detailed fare information is not available on websites. At the time of writing it has not been possible to obtain a full list of all the relevant bus fares although this information has been requested.

3.2 Section 2 outlines bus routes for access to the various facilities. Current bus route numbers have been included where access is by one or two buses only. The table is highlighted in cases where 2 buses are required each way. No data has been included in cases where 3 buses are required each way, or where a journey would take significantly in excess of an hour each way even allowing for all connections being made.

3.3 Whitworth is the only area for which there is no direct bus route to at least 4 facilities. In the case of Whitworth, there is only Marl Pits available by means of a single bus journey as an alternative to the parish's own pool.

3.4 The pools are situated on or close to main bus routes with bus frequencies of at least every half hour.

3.5 In terms of accessibility by public transport, Marl Pits is the most accessible site for all Rossendale's local population centres, being on a main bus link from each one. Haslingden is accessible in a single fare from all areas excepting Whitworth. Whitworth pool is accessible from four of the six areas and Ramsbottom and Bury's facilities are each accessible from three areas.

3.6 The two pool facilities available in the Hyndburn area appear to be reasonable alternatives only in terms of access from Haslingden, whilst the facility in Burnley is only accessible on a single bus journey from Rawtenstall or Bacup.

3.7 Whilst this information provides a general overview in terms of convenience of access by public transport the currently awaited fees information may also yet cast doubt on the viability of some alternatives.

4. Swimming Prices

4.1 Details of Swim prices are included in section 3 to this appendix.

4.2 In terms of a regular priced adult swim, the most expensive facilities are Marl Pits and Haslingden Pool, with lower priced alternatives elsewhere. However these two facilities are also the only two to offer free swimming to all under-fives.

4.3 The lowest standard charges are at Bury's Castle Leisure Centre and at Ramsbottom pool. However the main Bury site is one of the least accessible by public transport for the majority of Rossendale users and the furthest distance by private vehicle.

4.4 The variance in fees, excepting those for the under-fives, is fifty pence for concessionary swim and seventy pence for adult swim. These variations are low in comparison to the travel costs associated even with short car or bus journeys. It is therefore unlikely that fees are a significant factor either in determining choice of facility used, or that they would be regarded as a mitigating factor should a lower price be offered at an alternative to any unavailable facility.

5. Summary

5.1 It would appear that, for those areas which currently have no 'on the doorstep' facility i.e. Edenfield, Waterfoot and Bacup, there are alternative providers with comparative access to choose from.

5.2 In the case of Rawtenstall, should Marl Pits become unavailable, Haslingden and Ramsbottom would seem to be the most likely alternatives.

Appendix 5

5.3 If Haslingden pool were to become unavailable it seems likely that Marl Pits, Ramsbottom and Hyndburn Sports Centre would be the prima facie choice.

5.4 In the case of Whitworth, there is less obvious alternative provision. Marl Pits is the closest alternative in this case, but would include a significant increase in travel time and costs.

5.5 The details included in this review are based on general factors regarding access. However it is not known what proportion of customers, for example, use facilities close to their place of employment rather than residence. It is likely that these customers are tied to narrow windows of opportunity such as time slots pre-working hours or at lunch times. If so, then any additional travel time may prove a significant disincentive to use.

5.6 It is also likely there are factors such as 'brand loyalty' and lack of awareness of alternative facilities which are a factor in customer perceptions of the availability of alternatives. It may be that if facilities are rationalised customers would retain a preference for Rossendale-based sites. Alternatively a preference for the most convenient access may be the dominant factor. It is clear that facilities exist which provide customers with a choice of accessible sites. It is not clear what proportion of the Rossendale facilities' customer base would seek alternatives outside the borough, or be deterred from attendance of any facility, in the case of a withdrawal of any of the existing pools.

Appendix 5: Section 1 – Distance (miles) to Local Facilities from population centres.

	MARL PITS, BB4 7SN	HASLINGDEN POOL, BB4 6NX	WHITWORTH POOL, OL12 8BT	RAMSBOTTOM POOL, BL0 0PT	BURNLEY ST. PETER'S, BB11 2EF	HYNDBURN SPORTS, BB5 4EP	HYNDBURN MERCER BB6 7AT	CASTLE LEISURE BURY, BL9 0EZ
RAWTENSTALL BUS STATION BB4 7NG	0.7	2.0	7.3	4.0	7.5	7.5	9.5	10.5
BACUP BUS OL13 9NJ	4.1	6.4	3.6	8.4	7.4	13.9	16.0	13.4
EDENFIELD BL0 0JZ	4.4	2.8	10.9	1.4	10.9	9.5	11.5	5.8
HASLINGDEN BB4 5QJ	2.9	0.4	9.4	4.9	9.9	5.3	7.3	11.3
WHITWORTH OL12 8DP	6.6	8.9	0.4	10.9	10.8	14.4	19.4	11.6
WATERFOOT BB4 9AG	1.3	3.6	5.6	5.7	8.1	9.1	11.1	12.1

Appendix 5: Section 2 – Bus Routes to Local Facilities

	MARL PITS, BB4 7SN	HASLINGDEN POOL, BB4 6NX	WHITWORTH POOL, OL12 8BT	RAMSBOTTOM POOL, BL0 0PT	BURNLEY ST. PETER'S, BB11 2EF	HYNDBURN SPORTS, BB5 4EP	HYNDBURN MERCER BB6 7AT	CASTLE LEISURE BURY, BL9 0EZ
RAWTENSTALL BUS STATION BB4 7NG	482	464	464	273	X43	464,7	464,7	483
BACUP BUS OL13 9NJ	464	464	464	464,273	8			
EDENFIELD BL0 0JZ	483	484	243,464	273	483,X43	484,X41	484,7	483
HASLINGDEN BB4 5QJ	464	>0.5 mile travel (464)		484	464,X43	X41	X41	484
WHITWORTH OL12 8DP	464		>0.5 mile travel (464)		464,483			
WATERFOOT BB4 9AG	483	464	464	464,273	464,X43	464		464,483

KEY: CLEAR CELL = BUS NUMBER
 GREY CELL = 2 BUSES REUIRED
 BLACK CELL = 3 BUSES/JOURNEY OVER 1 HOUR EACH WAY

Appendix 5: Section 3

Fees at Swim Facilities

	ADULT SWIM	CONCESSION	CHILD SWIM	UNDER - 5
MARL PITS	£3.50	£1.90	£1.90	FREE
HASLINGDEN POOL	£3.50	£1.90	£1.90	FREE
WHITWORTH	£3.10	£1.80	£1.80	UNDER 3 FREE
RAMSBOTTOM	£2.80	£1.40	£1.40	£0.60
BURNLEY	£3.10	£1.90	£1.90	AS CHILD
HYNDBURN SPORTS CENTRE	£3.30	£1.70	£1.70	AS CHILD
HYNDBURN MERCER HALL	£3.10	£1.65	£1.65	AS CHILD
CASTLE LEISURE CENTRE, BURY	£2.80	£1.40	£1.40	AS CHILD

Leisure Options Review – Public Feedback

1. Methodology

- 1.1 The Rossendale Borough Council Cabinet, at its meeting on 21st January 2009, agreed to a period of public feedback on the options for the future provision of leisure facilities in the borough. Agenda item D2, available on the Rossendale Borough Council website (www.rossendale.gov.uk), outlined the background to the issues concerned and detailed seven options for consideration.
- 1.2 The Cabinet agreed to a period of consultation ending on 10th February 2009 and, via the Rossendale Borough Council website and public media, has encouraged individual citizens and stakeholder groups to feedback comments and concerns about the options, so that the meeting of the Council on 26th February 2009 can have an informed debate on the issues before deciding on the way forward.
- 1.3 Feedback has been received by a variety of means including e-mail, online feedback form, letter, petitions, feedback proforma and local area forums. An analysis of that feedback and a review of the key issues raised is set out below.

2. Analysis of Feedback

- 2.1 Feedback has been received by the following means:

*e-mail to Councillors	123
e-mail to 'Leisure' inbox/other	76
via Leisure Trust	60
RBC website online forms	28
open letters	290
letters	21
	<u>598</u>

* the same e-mail to a number of Councillors has been counted once

- 2.2 The number of references to major issues from that feedback is:

closure of Haslingden pool	306	(37.1%)
closure of Marl Pits pool	319	(38.6%)
closure of Bacup Leisure Hall	19	(2.3%)
healthy lifestyle agenda	62	(7.5%)
impact on swimming lessons	55	(6.7%)
transport issues	12	(1.4%)
financial issues	36	(4.4%)
other	<u>17</u>	(2.0%)
	<u>825</u>	

The category 'other' includes comments related to overall leisure provision, such as athletics, rugby and roller skating, or to requests for specific information e.g. a copy of agenda item D2 or the names of Rossendale Leisure Trust Board members.

Appendix 6

- 2.3 Three public consultation meetings were held during week commencing 2nd February 2009 and attendances were as follows:
- | | |
|-------------|------------|
| Bacup | 82 |
| Haslingden | 99 |
| Rawtenstall | <u>99</u> |
| | <u>280</u> |
- 2.4 There have been two face book sites set up in relation to the Council's Leisure Review, "Keep Haslingden and Marl Pits baths open" with 1009 members and "Save Swimming in Rossendale" with 1319 members. These figures were correct as at 16th February 2009.
- 2.5 There are also been 4 petitions:
A petition to 10 Downing Street which as at 16th February 2009 had 884 signatures.
"Keep a pool open in Haslingden" has 1712 signatures, "Keep a Pool open at Marl Pits" has 223 signatures and "Keep Marl Pits and Haslingden Pools Open" has 816 signatures. There is some evidence that a number of people have signed more than one of the petitions.

3. Key Issues

- 3.1 A recurrent theme in the feedback is the need to keep all existing pool facilities open until a new pool is built at Haslingden Sports Centre. The arguments for this are that Marl Pits pool provides a separate small pool for younger children and babies which Haslingden pool does not have and also that Marl Pits is equipped to deal with swimmers with disabilities eg. adapted changing rooms for swimmer and carer, special changing bed and poolside hoist. Conversely, the depth of Haslingden pool provides facilities for scuba training which Marl Pits does not.
- 3.2 Many comments have been about the convenience of local facilities in Rawtenstall and Haslingden and the reluctance or inability of people to travel to a different part of the borough to access a swimming pool. The additional cost of bus fares is mentioned by several respondents.
- 3.3 A number of comments have concerned the cost of the RLT head office and suggest that a reduction in that cost could be used to enhance the existing facilities at Haslingden and Marl Pits.
- 3.4 Some respondents have expressed concern about the impact of the possible closure of Marl Pits pool on the projected sports village at the site.
- 3.5 Using the comparator of CLAW, a number of comments refer to setting up community groups to manage each facility or a group of facilities, as an alternative to RLT.
- 3.6 A number of respondents refer to swimming being a compulsory aspect of key stage 2 within the education agenda and question how this can be delivered within the borough if pool closures go ahead.

Appendix 6

- 3.7 The conflict between the government's healthy lifestyle agenda, particularly childhood obesity, and the possible closure of leisure facilities is highlighted by a large number of respondents.

4. Key Issues from the public consultation meetings

- 4.1 A clear message from the consultation was the need for a complete review of all Leisure facilities, leading to a clear strategic understanding of the Leisure offer within the valley and a vision and direction of travel to sustain it in the long term.
- 4.2 There was a clear message that participants want the pools to remain open mainly due to concern about the lack of capacity. This view was widened to not wanting any pool to close until a new one was built.
- 4.3 A number of people expressed concern about the Council's commitment to its pledge to invest in a new pool. In contrast individuals and groups expressed they wanted to be closely involved in any consultation about its design, location and usage should the decision be taken for a new pool.
- 4.4 Leisure hall is the only one of its kind in the valley and should stay open as others have all closed i.e. Astoria, Public Hall.
- 4.5 Provide better advertisement for all services and events at the Leisure Hall and would be suitable for the arts

Issues and concerns raised during the consultation period have been collated to inform the decision making process.