

West Facing

*Ramp
Roof
Stone*

Existing Sports Hall store

Polyester powder coated metal
profile sheet, fascias and soffits.

Sand / cement rendered finish



New Entrance Canopy

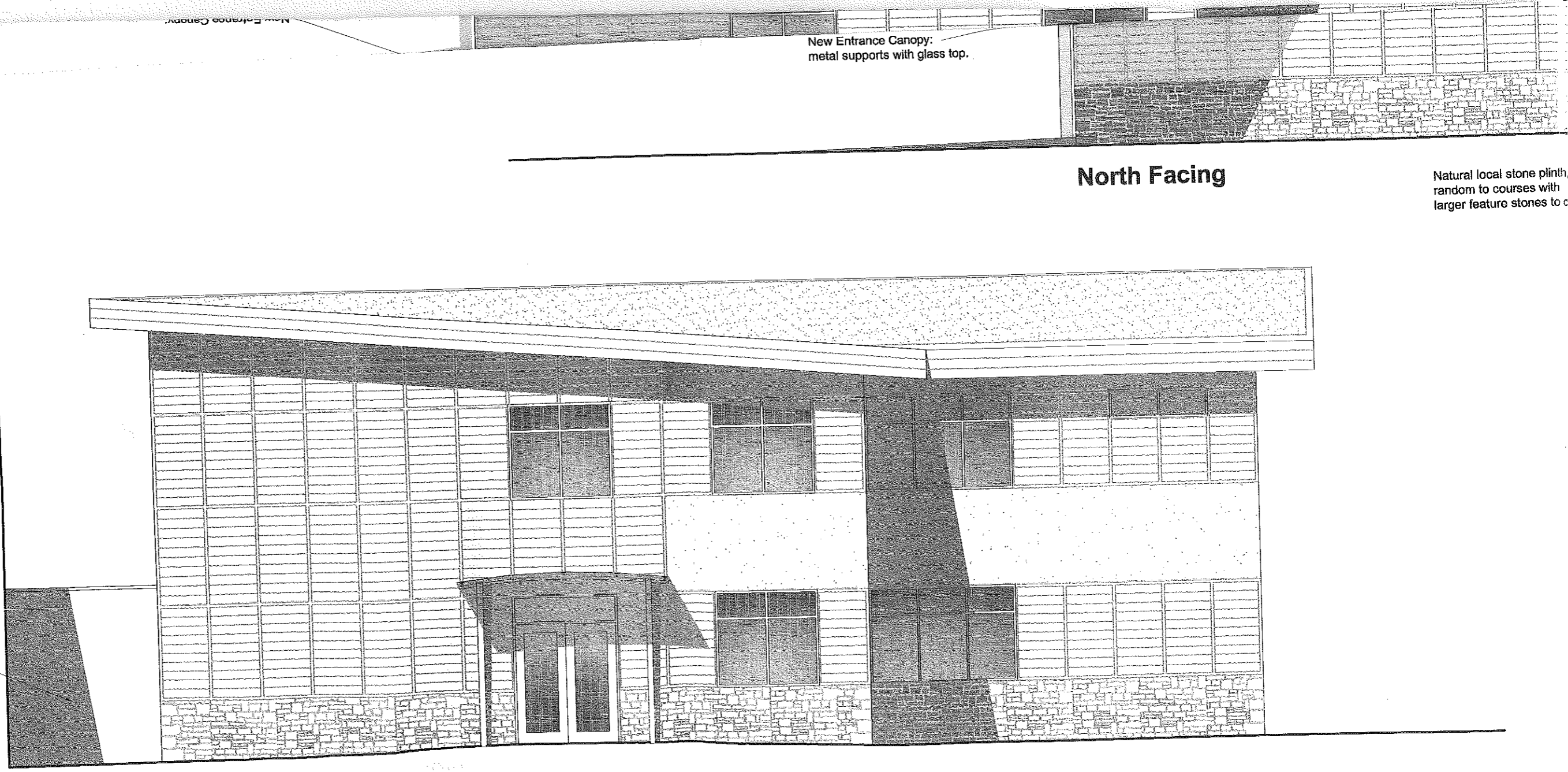
New Entrance Canopy:
metal supports with glass top.

North Facing

Natural local stone plinth,
random to courses with
larger feature stones to c

Sports Hall store

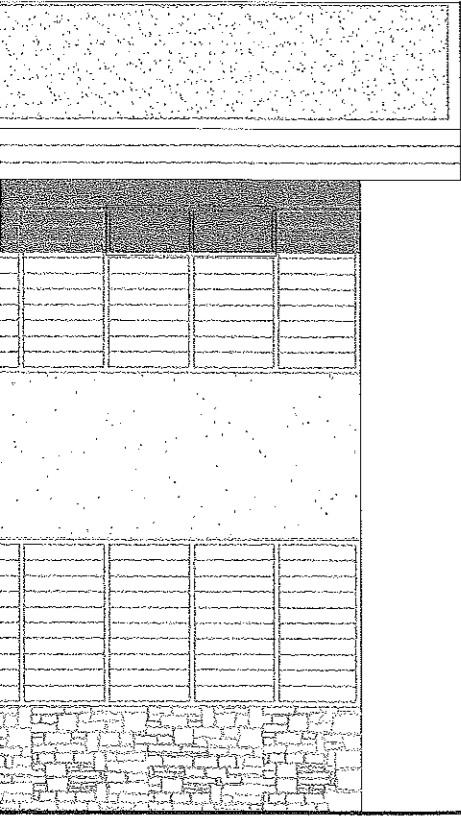
East Facing



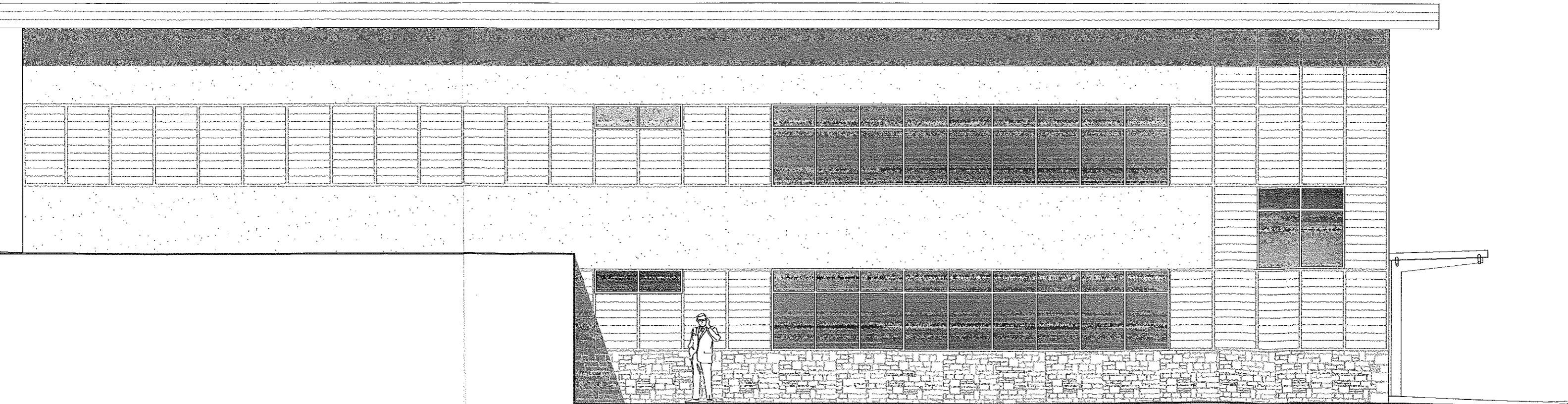
random to courses with
larger feature stones to quoins.

aluminium door

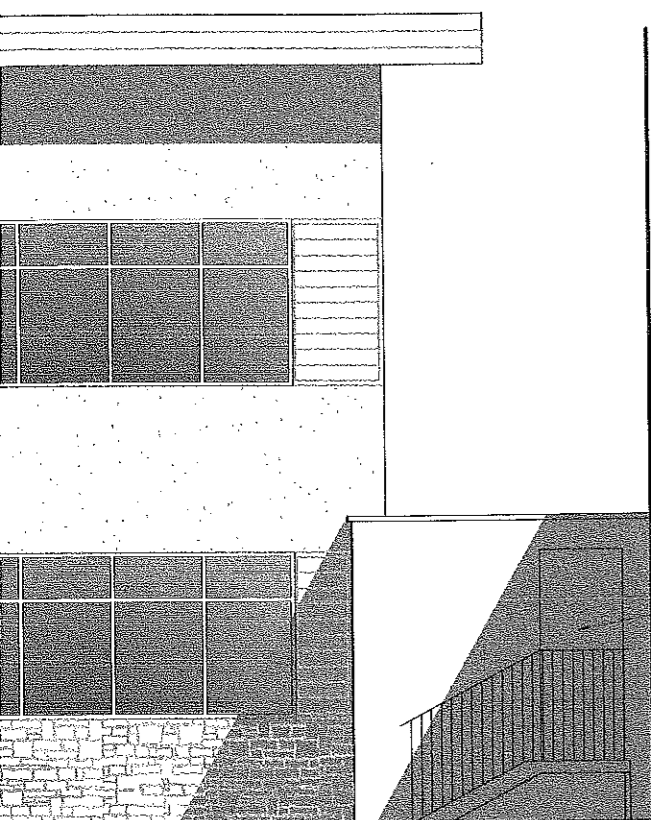
windows



6-Classroom Block



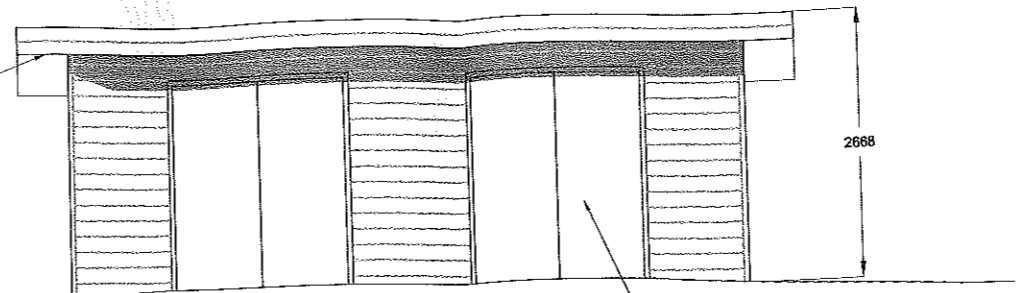
South Facing



*Plain
Ramp
Stone*

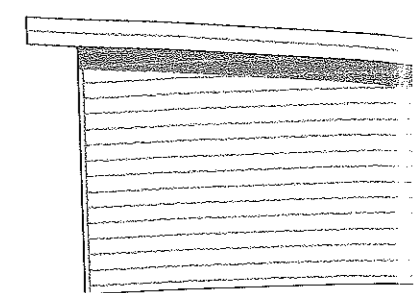
Existing Sports Hall store

Polyester powder coated metal profile sheet; fascias and soffits.

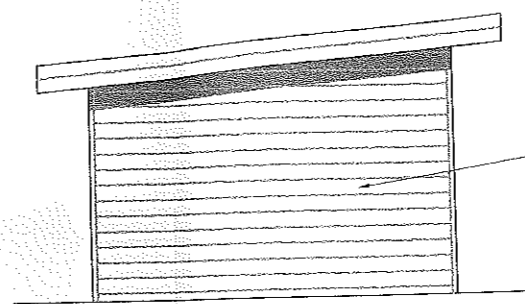


South Facing

Polyester powder coated aluminium door

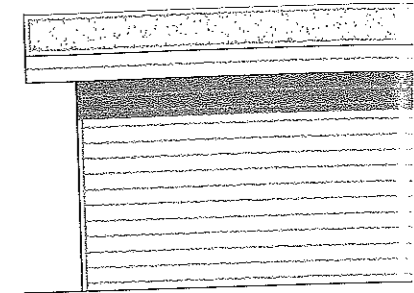


East Facing



West Facing

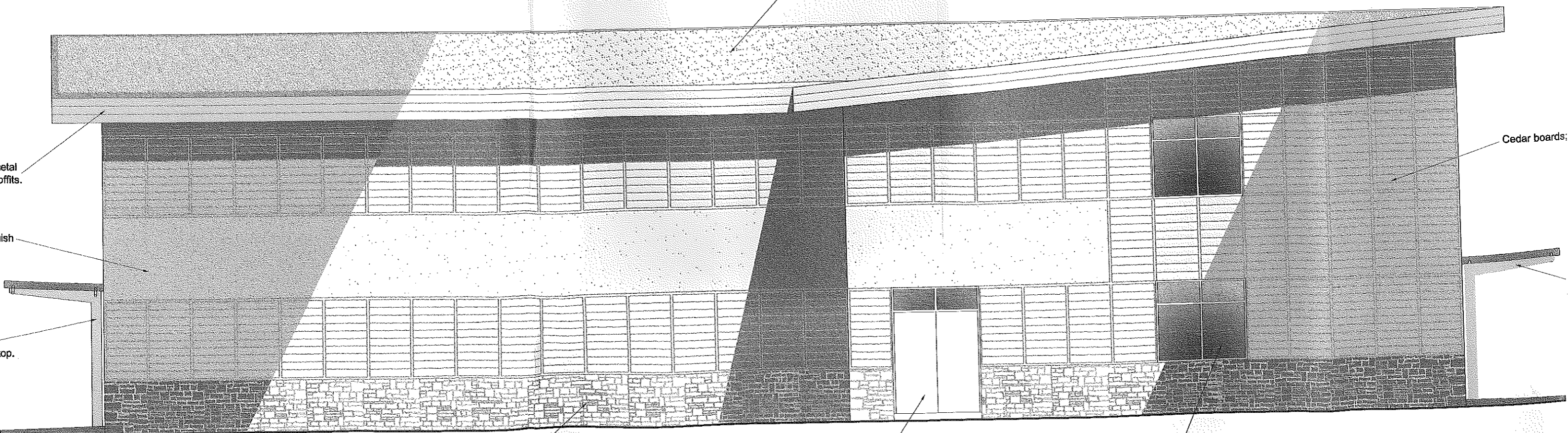
Cedar boards; allowed to weather naturally



North Facing

Transformer Housing

Sedum extensive green roof



metal soffits.

ish

op.

Cedar boards;

Polyester powder coated