


This map is based on Ordnance Survey material with the permission of Ordnance Survey on behalf of the Controller of Her Majesty's Stationery Office
 © Crown Copyright
 Unauthorised reproduction infringes Crown Copyright and may lead to prosecution or civil proceedings.
 Licence No: 100049248 Data Generated published 2004



	contract Ashley Court John Street Whitworth, Nr Rochdale, Lancs	scale 1:1250 date Nov 2008 drawn M J F
	Green Vale Homes Ltd, Asset Management Green Vale House, New Hall Hey Business Centre, Rawtenstall, Rossendale, Lancs BB4 6HL	drawing number WH3/2

Amber

NOTES

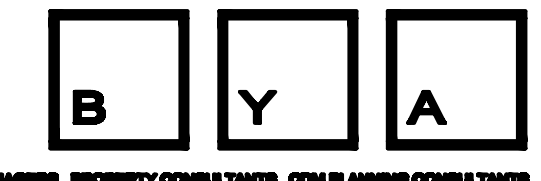
- 3 - 3bed 5per house
85sqm 8No
- 2 - 2bed 4pers house
75sqm 4 No
- F - 1bed 2pers flat
43sqm 4 No
2No 2 storey blocks

KEY

- 1-16 Plot reference numbers, temporary until allocation of postal addresses.
 - Footprint of former building from topographical survey
 - +230.200 Proposed finished floor levels, approximate
 - 2m high wall with saddleback concrete coping in buff brickwork to match houses, with lockable gate
 - 1.8m high timber close boarded fence on brickwork retaining wall
 - 2m high timber close boarded privacy fence on brickwork retaining wall
 - New tree (locations of existing trees not yet known)
 - Garden shed and secure cycle store, to rear gardens of houses. For Code compliance shed size must be 2.0 x 2.0m with integral lock (not padlock) and a steel frame to be provided within the to which cycles can be locked by wheel and frame e.g. Sheffield pattern cycle stand
 - Bins as supplied by Rossendale Council, 1No 240litre for waste, 1No 240 litre for re-cyclable waste and 1No 140litre for re-cyclable garden waste. 1500mm diameter turning circle adjacent to bin store area
 - 1.8m high lockable timber gate, and fence.
 - Rotary dryer as employers requirements with minimum of 6m of drying line
 - Front and rear gardens to be turfed. Top soil to suitable depth to be certified un-contaminated
 - secondary car space permeable re-reinforced grass
 - Car parking space 2.4m wide with 900mm space adjacent for possible disabled standard space
 - Possible 2nd car parking space
- Area of the site = 3770 sq.m / 0.377 Hectares

E Planning submission	19.3.2012
D Coloured for presentation.	
C 28 houses re-located to John St end of access way. Existing trees and footprint of building added. New trees within gardens deleted.	8.3.2012.
REVISIONS	DATE

DWG TITLE SITE PLAN - as proposed	
JOB Land at former ASHLEY COURT Whitworth, Rossendale OL12 8EB.	
CLIENT GREEN VALE HOMES	
SCALE 1:200@A1 1:400@A3	DWG No. 1716-03E
DRAWN gm	DATE 09.02.12

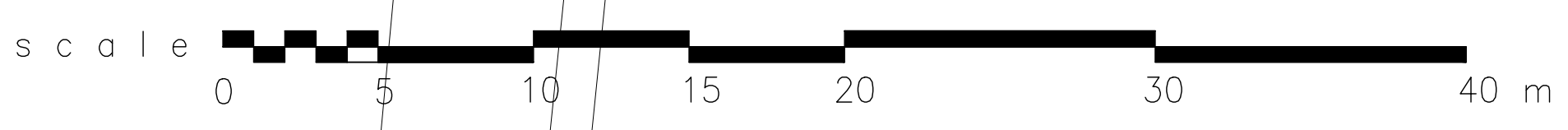
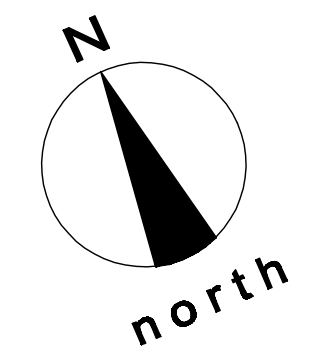


ARCHITECTS . PROJECT MANAGERS . PROPERTY CONSULTANTS . URBAN PLANNING CONSULTANTS
BYA Limited
Alma House, 10 St Vincent Street, Liverpool, L3 5XW
Tel: 0151 708 6121 Fax: 0151 708 9141

COWM PARK WAY NORTH

ELM STREET

JOHN STREET

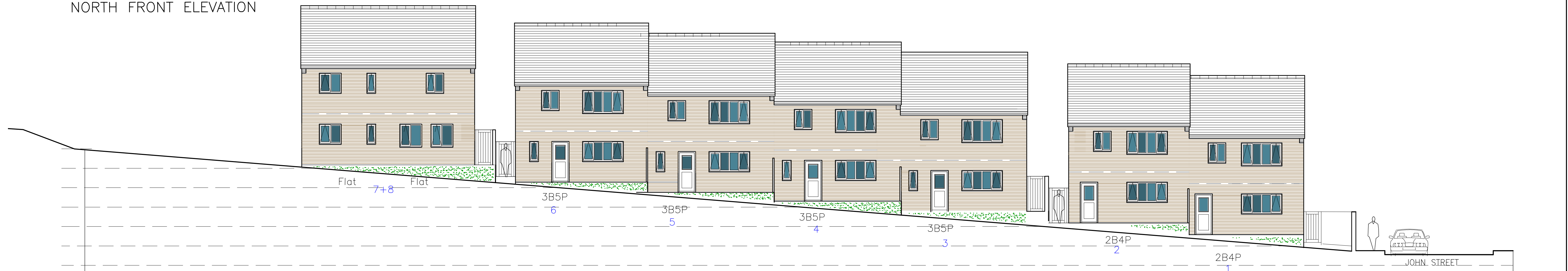


St Anselms RC Primary School

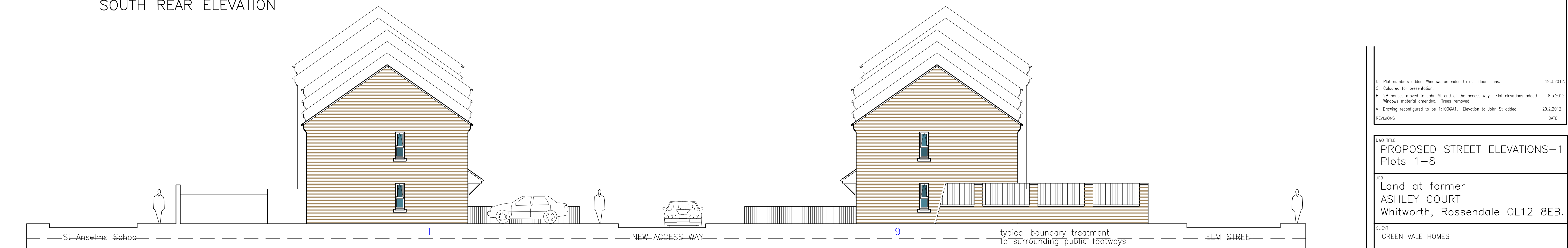
Swimming Pool



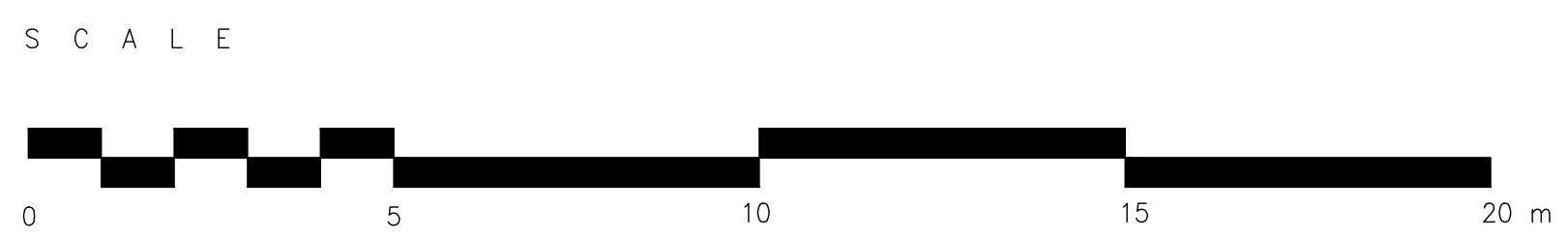
NORTH FRONT ELEVATION



SOUTH REAR ELEVATION



ELEVATION TO JOHN STREET



FACING MATERIALS
 FACING BRICK – buff
 RENDER to first floor of front elevations – off white
 MAIN ROOFS – flat profile, slate grey interlocking tiles
 PORCH ROOFS – small format slate grey tiles
 WINDOW and DOOR FRAMES – uPVC, colour grey to outside
 FRONT DOORS – GRP/composite various colours
 REAR DOORS – GRP/composite white
 FASCIAS and SOFFITS – white
 RAINWATER GOODS – black

1-16 Plot reference numbers

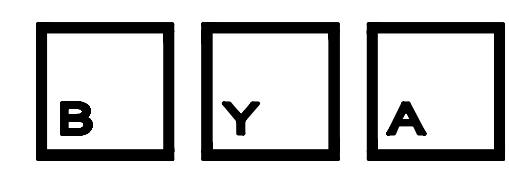
D	Plot numbers added. Windows amended to suit floor plans.	19.3.2012.
C	Coloured for presentation.	
B	2B houses moved to John St end of the access way. Flat elevations added.	8.3.2012.
A	Windows material amended. Trees removed.	
	Drawing reconfigured to be 1:100@A1. Elevation to John St added.	29.2.2012.
REVISIONS		DATE

DWG TITLE
PROPOSED STREET ELEVATIONS-1
 Plots 1-8

JOB
 Land at former
ASHLEY COURT
 Whitworth, Rossendale OL12 8EB.

CLIENT
 GREEN VALE HOMES

SCALE	1:100@A1 1:200@A3	DWG No	1716-05D
DRAWN	gm	DATE	

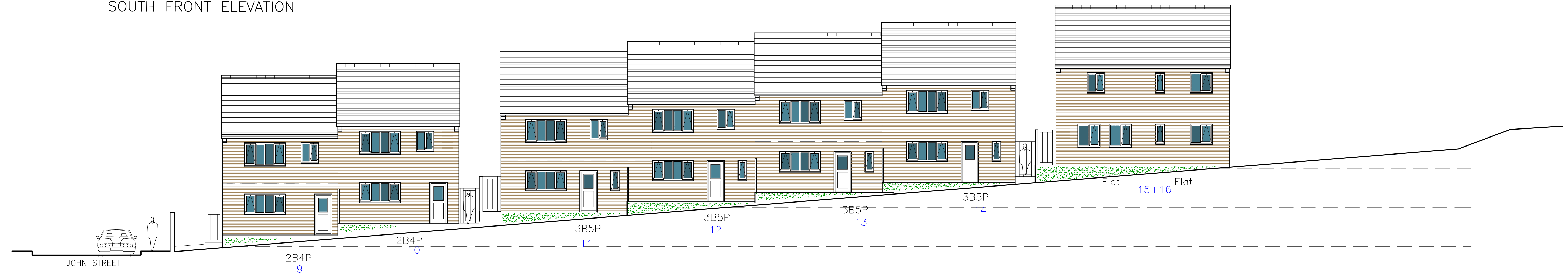


ARCHITECTS, PROJECT MANAGERS, PROPERTY CONSULTANTS, CONSTRUCTION CONSULTANTS

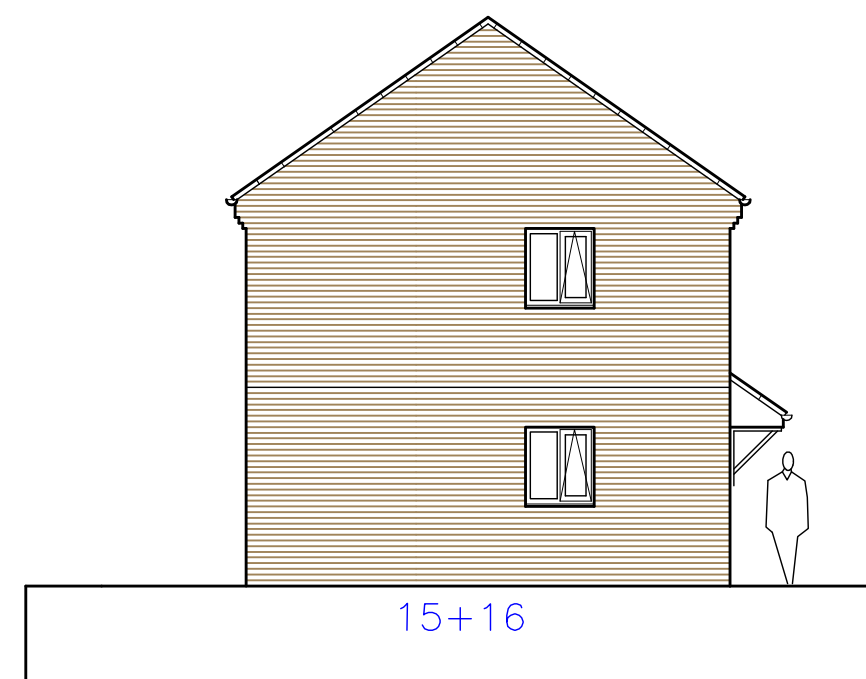
BYA Limited
 Alna House, 10 St Vincent Street, Liverpool, L3 5DW
 Tel: 0151 708 6121 Fax: 0151 708 9141



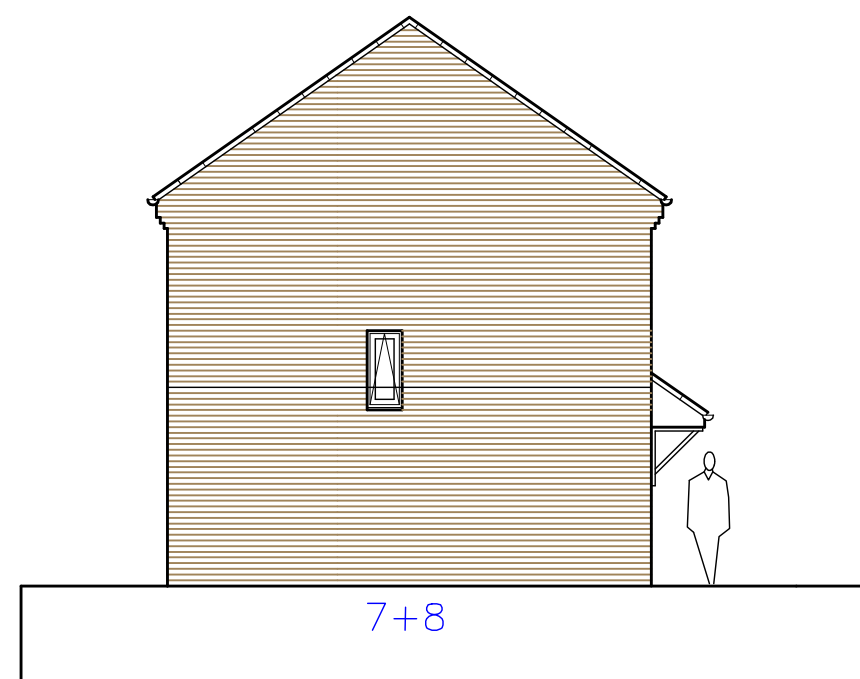
SOUTH FRONT ELEVATION



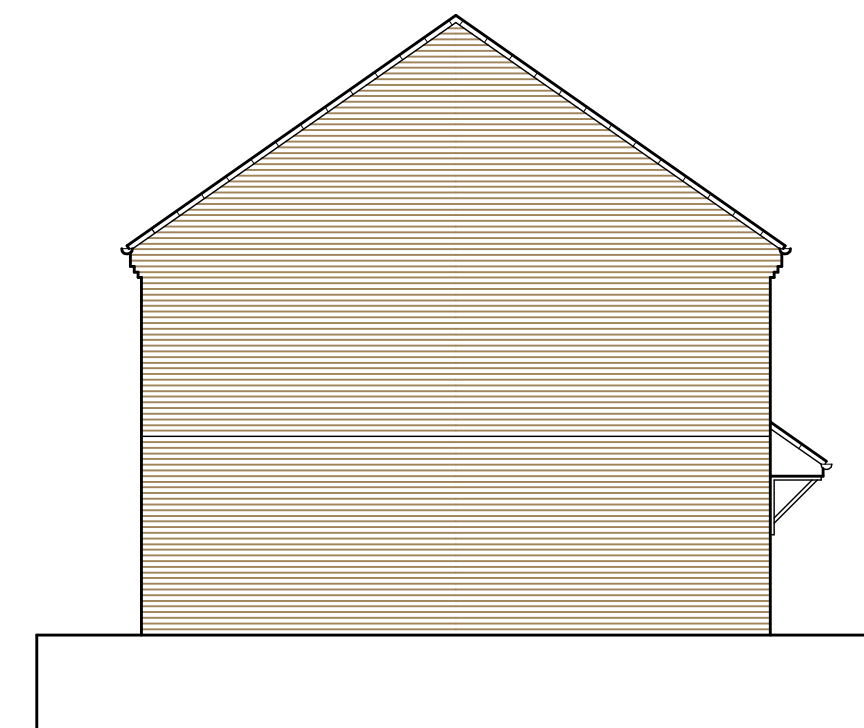
NORTH REAR ELEVATION



North West GABLE of Plots 15+16
Plots 7+8 similar but mirrored

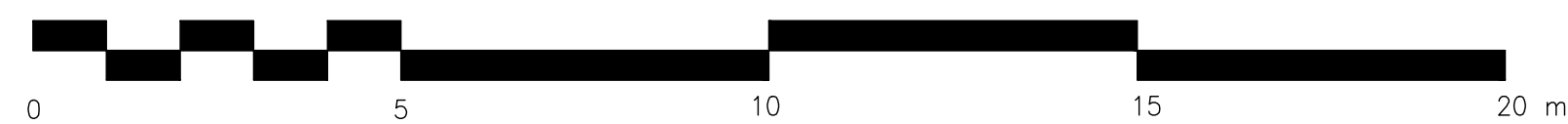


South East GABLE of Plots 7+8
Plots 15+16 similar but mirrored



GABLES of Plots 3+10+14
Plots 2+6+11 similar but mirrored

S C A L E



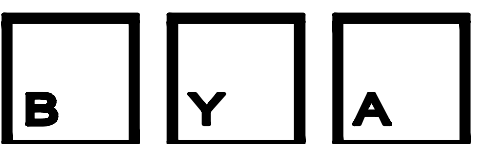
REVISIONS DATE

DWG TITLE
PROPOSED STREET ELEVATIONS-2
Plots 9-16

JOB
Land at former
ASHLEY COURT
Whitworth, Rossendale OL12 8EB.

CLIENT
GREEN VALE HOMES

SCALE	1:100@A1 1:200@A3	DWG NO	1716-10
DRAWN	gm	DATE	



ARCHITECTS . PROJECT MANAGERS . PROPERTY CONSULTANTS . ENVIRONMENTAL CONSULTANTS . GEN PLANNING CONSULTANTS

BYA Limited
Alma House, 10 St Vincent Street, Liverpool, L3 5DW
Tel: 0151 708 6121 Fax: 0151 708 9141