

Whitworth Neighbourhood Forum
Notes of the Neighbourhood Plan Public Meeting
Shawforth Chapel, Whitworth
18th June 2012

Present: the following Whitworth Neighbourhood Forum members were in attendance plus 16 members of the public: Cllr Tom Aldred (Chair), Cllr Alan Neal, Cllr Madeline De Souza, Julie Johnson (Lancashire Care NHS Trust), Sgt. Mark Taylor (Lancashire Police), Mandy Whittaker (Greenvale Homes), Jack Dalton (Community Member), Steven Butterworth (Community Member), Marie Eccles (Community Member), Pat Myers (Community Member), Tony Phillips (Community Member), Brian Furness (Community member), Pat Smith (REAL), Kathy Fishwick (Civic Trust), Shirley Suthers (Methodist Churches), Hans Mundry (LCC Youth Service), Karen Douglas (Whitworth Town Council), Alison Wilkins (RBC), Bill Mercer (RBC).

Apologies: Cllr Sean Serridge, County Cllr Peter Steen, Ken Makin.

1. **Welcome and introductions**

Cllr Aldred welcomed everyone to the meeting and explained that it is a business plan meeting, but open to the public. He stressed that the Forum is not a closed shop and is keen to communicate what the Neighbourhood Forum is up to. New Community members are very welcome to join the neighbourhood Forum.

He advised that people were requested to keep their questions to issues included on the agenda.

As the meeting was being held at Shawforth Chapel, he invited Shirley Suthers to inform people about the churches Raise the Roof campaign to raise money for a new roof on the church. She asked people to fill in a form if they were interested in supporting the campaign in any way.

2. **Notes and action from the last meeting**

The notes from the meeting held on 15 March were accepted as a correct record.

3. **Update on Local activities and services**

a) **Forward Planning - Green Belt and Urban Boundary Review**

James Dalglish from RBC Forward Planning explained that the Core Strategy adopted last year is used to determine planning applications and is a broad scale plan covering

what is needed in the Borough over the next 15 years. The next stage is more specific and people will be invited to put forward specific sites. There will be a period of consultation in September particularly about the greenbelt and urban boundary review.

b) Civic Trust – Heritage at Risk

Cathy Fishwick from Civic Trust outlined the legislation around protecting heritage assets against crime. Heritage crime includes any damage to a listed building including metal theft, e.g. lead from roofs, which is a particular problem at the moment. Kathy explained that as a community, we can keep an eye on things, in line with the Government's localism agenda. At this stage it is just about raising awareness and getting an understanding of what listed buildings there are and what is valued from a heritage point of view. She advised people to call the police if they see something suspicious. Heritage crime includes stone theft (flags etc.), metal theft (metal plaques, lead on roofs), arson, vandalism, unauthorised alterations to listed buildings, damage by mountain bikes and 4 wheel drive vehicles e.g. to quarry workings, damage to parks and war memorials.

c) Police Update

Sgt Mark Taylor reported that in general Whitworth is a peaceful town with low crime rate averaging one crime per day. The Neighbourhood Policing team now have a new vehicle, thanks to Whitworth Town Council. He advised that lead theft remains a problem and various operations have been undertaken to combat this. The jubilee celebrations passed off quietly in the area.

Traffic enforcement officers have been stopping speeding drivers on Tonacliffe Road and several local people have been stopped for speeding and using mobile phones whilst driving.

d) Health Improvement Service

Julie Johnson from Lancashire Care NHS Trust gave an update on the work of the Health Improvement Service. National Breastfeeding Awareness Week is at the end of June and is around ensuring places are breast feeding friendly. There is a big push at the moment around Change 4 Life, linked to the Olympics and there are plenty of resources available on the website www.nhs.uk/change4life The team also supports the Communities Against Cancer campaign which highlights the early signs of lung, bowel and breast cancers.

Julie's contact details are:

Julie Johnson

Health Improvement Specialist
Health Improvement Service
Lancashire Care NHS Foundation Trust

T: 01254 358026

E: julie.johnson2@lancashirecare.nhs.uk

W: www.lancashirecare.nhs.uk

P: Hyndburn Locality Offices| Accrington Victoria Hospital | Hayward Road | Accrington | Lancashire | BB5 6AS

e) Consultation on possible new play area

Alison Wilkins advised that Groundwork will be conducting a consultation event on behalf of the Council, on 20 June on Eastgate on Wallbank, about a possible new play area for Whitworth. Everyone is welcome to attend and give their views. Any plans would be dependent on external grant funding.

4. Progress on implementing the Whitworth Neighbourhood Action Plan

An update newsletter on the Neighbourhood Plan was circulated, detailing progress in implementing the Plan. The following projects were highlighted:

Signage – new tourist signs are currently being put in place to highlight tourist attractions in the area including Healey Dell which will be heavily promoted. Whitworth will also be signposted within Rossendale.

The Youth Council attended and Hans Mundry from the Youth Service at LCC introduced the group and explained that their role is about having a voice locally, regionally and nationally. It was agreed that the Youth Council would be invited to all meetings.

Action: Alison Wilkins

Jubilee celebrations took place throughout Whitworth, some funded by grants from the Neighbourhood Forum including Riddiough Court, Sunnybank Day Centre, and Whitworth Museum. Photos and updates are included in the newsletter.

The Sumer Fun 2012 brochure is available highlighting the activities for children and young people that will be put on in the area over the summer holidays.

The Neighbourhood Forum gives grants to a variety of local organisations, and the newsletter includes a summary of grants awarded in 2011/12.

Rossendale Leisure Trust are looking to promote the facilities at Whitworth High School Sports Centre. They will be introducing a new programme of fitness classes to complement the current gym membership and would like suggestions from local residents about activities they would like to see there. Vicky Lord the duty manager can be contacted for more information on 01706 343218 / Vicky.lord@rltrust.co.uk

5. Determining of grant and project funding applications

The following grant applications were approved:

Spartans Kick Boxing - £500 approved for kit and equipment

Whitworth and Healey Band - £500 approved towards the cost of attending a national competition

Whitworth Tourism and Leisure Committee - £500 approved towards the Rushcart Festival

Whitworth and Healey Horticultural Society - £500 approved towards the cost of plants for the Memorial Gardens

Whitworth Playgroup and after school club - £250 approved for an outing.

Borough wide applications:

Rossendale District Football Assoc. - £55 pro rata share approved towards new kit

Revive Rossendale Radio - £55 pro rata share approved

Valley at Work - £55 pro rata share approved for sponsorship of one of the Business Awards

Project Funding:

The full Forum membership approved project funding for Whitworth Historical Society - £2000 approved towards preservation and development of their archive.

6. Any other business

A question was asked about Kandel Place and whether it had been to Development Control Committee. Work is currently ongoing and concerns were expressed, This will be clarified.

Action :Alison Wilkins

It was noted that the Museum have now reached agreement with the owner of the land adjacent to the museum to provide a gap around the museum and the fence has now been moved to facilitate the installation of a disabled ramp.

7. Date of next meeting

The next meeting will be on 10th October at 6.30pm at Whitworth Civic Hall. This will be a Business Plan meeting.

Whitworth Neighbourhood Forum Action Plan Update

Jubilee celebrations

Neighbourhood Forum Action Plan Update

Update No. 7
June 2012

Residents of Whitworth enjoyed the Diamond Jubilee thanks in part to Whitworth Neighbourhood Forum which offered funding grants of up to £100 for local Jubilee Celebrations and street parties.

Riddiough Crafts at Riddiough Court, Whitworth Historical Society, Whitworth and Healey Band, Whitworth Care Trust and residents of Lobden Crescent and Cottage View all took advantage of the offer and successfully applied for funding for their celebrations.

Whitworth Care Trust held two parties to celebrate the Queen's Diamond Jubilee. Sunnybank Day Centre held a Sing-Along and Afternoon Tea on Friday, 1st June and Sunnyside Rest Home held a



buffet tea for residents and their friends and families on Monday, 4th June.

The flags and bunting are staying up to support Team GB at the Olympics!



At Riddiough Court, 50 people enjoyed a party on 7 June. There were songs from the ages and a special toast to the Queen. The decorations were all made by the residents and members of the craft group.

Jubilee Celebrations

Whitworth Historical Society

2012 has been a busy year so far for the members of the Whitworth Historical Society with the regular lecture meetings, which take place on the first Wednesday of each month, being consistently well attended. Most members agree that, this year, there has been a particularly interesting group of speakers.

This has included a glimpse into the lives of the Brontes, an insight into the Rochdale of yesteryear, the 'North into Focus', and the canals of Venice. The latter was attended by the then Mayor of Rossendale, Cllr Gladys Sandiford, who, since her visit, has been very supportive of the Society's efforts.

In May, Dorothy Croston brought a slightly unusual dimension when she provided an insight into the work of the 'Hearing Dogs' charity whose work provides specially trained dogs to assist and support those people with hearing difficulties. The winter lecture season was brought to a close with an extremely interesting, if chilling, insight to three notable Lancashire Murders.

In addition to supporting the lecture season, members, in conjunction with Hallfold United Reformed Church, organised a film show on the subject of Old Whitworth which was attended by about 100 people.

By far the most successful event of the current year was a Jubilee Tea Party held at the museum on 2nd Saturday, June. Over 100 'customers' came along to enjoy afternoon tea and a chance to join in the festivities. Such was the success of this event that afternoon teas sold out and late arrivals had to make do with tea and cakes!! In addition to being supported by the Neighbourhood Forum, local business provided further support in donations of cash or in kind.

With little time to rest, members are now planning for the Society's annual Open Weekend which will take place on the 18th and 19th August 2012.

Members and visitors enjoy afternoon tea at the Jubilee Tea Party



Whitworth Neighbourhood Forum Action Plan

The Whitworth Neighbourhood Action Plan focuses work around the following themes:

- Economy and the Town Centre**
- Transport and Traffic**
- Health and Wellbeing**
- Tourism and Leisure**
- Families and Young People**

Priorities for the Forum include improving the retail offer, encouraging industry to the area, addressing lack of parking and pressure put on the infrastructure by new housing developments, attracting more visitors to the area, promoting health lifestyles and services for young people.

Suggested **new actions** include a Trade Fair for Whitworth, encouraging greater use of the internet and websites by local businesses, improved bus services – particularly in the evening, improved access to out of hours GP and Dental Services, supporting the Communities Against Cancer project, increasing alcohol awareness, developing activities for young people and looking into the high cost of public transport, particularly for young people.

If you would like more information about the Whitworth Neighbourhood Forum, or would like to get more involved and become a community member, please contact:

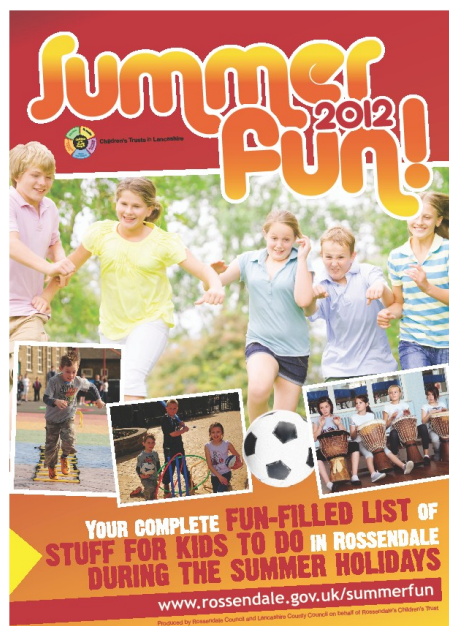
Alison Wilkins on 01706 252593 / alisonwilkins@rossendalebc.gov.uk or see www.rossendale.gov.uk

Summer Fun

The Summer Fun 2012 brochure will be available shortly and includes details of activities for children and young people over the summer.

Activities in Whitworth include:

- Whitworth Library—craft activities and Summer Reading Challenge
- Family Fun Sessions at Whitworth Leisure Centre
- Activities on the MUGA at Wallbank
Friday 27 July, 3 August, 10 August, 17 August, 24 August, 31 August 1-4pm
- 515 Centre, 7-9.30pm, activities each Monday, Tuesday and Wednesday



Neighbourhood Forum Grant Funding

The Neighbourhood Forum has grant funding available for local community groups and project funding to support actions in the Whitworth Neighbourhood Action Plan.

In the year April 2011—March 2012, the Neighbourhood Forum awarded grants to the following organisations:

- **Friends of our lady St. Anslems School—£275.00 for picnic benches at the school**

“These benches have been 'manna' from heaven. They are used as picnic tables (during our brief good weather spell!) also as a class resource when the weather permits. The children use them at lunchtime and the beauty is that because they are durable, plastic coated they are very easy to maintain.”



The pictures were taken during our Jubilee celebrations on 1st June.

- **Whitworth Care Trust—£150.00 for plants and shrubs**

- **1st Whitworth Guides—£327.00 for a six panel display board**

“At present the boards are displaying photographs taken by Guides during a walk through Healey Dell and Prickshaw. They were part of the Community Badge which required the girls to describe things of beauty in the area. The girls chose to walk through the dell and photograph trees, water, paths, animals etc.

There is also a small piece entitled 'Good role models', again part of badgework undertaken by Guides.

There are notices for each of our groups - 2 Rainbow Units, 2 Brownie Units, a Guide Unit and recently formed Senior Section Unit. The boards have been very useful and the girls take pride in seeing projects and artwork displayed.”

- **Whitworth and Healey Horticultural Soc—£500.00 towards plants at the newly refurbished Memorial Gardens**



- Whitworth Sports council - £500.00 towards the 2012 Sports Festival



Junior Golf at Lobden Golf Club



Junior Fell Race



Mountain Bike Ride

- CLAW - £250.00 towards planting outside the Leisure Centre
- Valley Artists—£45.30 (part of a grant of £411.85 from all 4 Neighbourhood Forums) towards the costs of displaying local art at an art exhibition in Bocholt.



- Rossendale Leisure Trust—£55.00 (part of a grant of £500 from all 4 Neighbourhood Forums) towards the Sports Awards

Better promotion of the countryside and leisure activities available

Borough wide Signage

Much investment is being undertaken in terms of identifying Rossendale as a place to visit. The Council is aiming to improve the image of the borough by providing, upgrading and developing the provision of signage to realise the potential of what Rossendale has to offer to visitors, thereby benefiting the local economy.

The work is in partnership with Lancashire County Council's Highways Department and must conform to the "Traffic Sign Regulations 2002", so the signage will be directional/informational rather than advertising or promotional.

The types of signage proposed are:

- Destination (towns/attractions within Rossendale);
- Brown tourism signs to key tourism attractions;
- Way marking on walking routes of national importance (for example: Rossendale Way),
- Picnic sites and cycle routes.
- Removal of redundant signs.

The benefits of improved signage are:

- Improved road safety by effectively guiding traffic flow through the valley to intended destinations;
- Support the business economy, increasing visitor numbers;
- Reduce the carbon footprint by the promotion of easier active travelling (walking and cycling;)

This will in time promote Rossendale as place to work, live and visit and to present the valley with an abundance of high quality leisure pursuits for all to enjoy within the Pennine Playground.

Whitworth will now be included on the traffic directional signs along with brown signs leading to Healey Dell Nature Reserve.

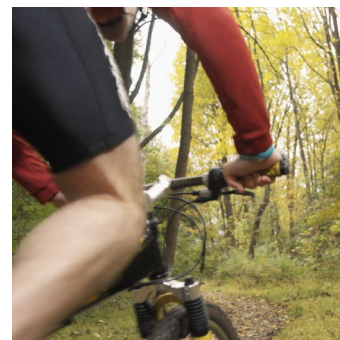
For more information contact: Bill Mercer 01706 252421, billmercer@rossendalebc.gov.uk



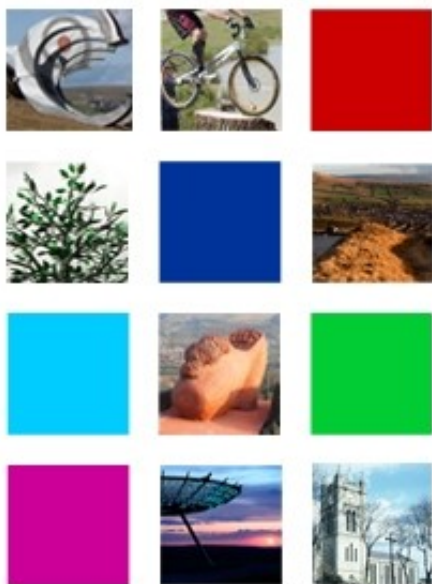
Support Rossendale Cycle Forum to Develop Cycleway

The concept of the Rossendale Cycleway (which incorporates the Whitworth Cycleway) is still fully supported by LCC and Rossendale councils. At the last cycle forum it was agreed that the first section to be tackled will be the Glen, which will involve the reopening of the two railway tunnels and the construction of a new bridge.

The tunnels have already been inspected and found to be in good condition. A detailed engineering specification will be commissioned and then a funding stream identified.



Greenbelt and Urban Boundary Review



In November 2011 the Council adopted the Core Strategy (Local Plan Part 1) <https://www.rossendale.gov.uk/corestrategy>

This strategic document sets out a 15 year framework for land in the Borough. The Plan identifies broadly how many new houses are needed, the overall amount of land required for business as well as setting out policies for protecting the best of our countryside. Development will be concentrated in the main towns of Bacup, Haslingden, Whitworth and especially Rawtenstall.

“Lives and Landscapes” (Local Plan Part 2) will take this a step further and identify specific sites for both development and protection. The Plan will take 2-3 years to prepare and will be put together in three distinct phases:

Phase 1: Review of Urban and Green Belt Boundaries

Phase 2: Allocation of sites

Phase 3: Policy for managing development

The Forward Planning Team is currently engaged in Phase 1 of the process. The Urban Boundary separates settlements from the countryside. A six week public consultation will happen in the autumn, starting in early September.

All information regarding ‘Lives and Landscapes’ is available online at www.rossendale.gov.uk/land and will be updated regularly throughout the process. If you have any questions about ‘Lives and Landscapes’ or the consultation process please contact Forward Planning on 01706 252417 or e-mail forwardplanning@rossendalebc.gov.uk

Consultation on New Play Area

Rossendale Borough Council has contracted Groundwork to consult with local people about a new play area in Whitworth and to work with a local group to apply for funding. The consultation will look at where a play area should be situated—a couple of sites on Eastgate in Wallbank have been suggested.

The consultation will take place on Wednesday 20 June 2012 3pm -6pm on Eastgate in Wallbank. Groundwork will bring their ‘got it covered’ van in case of bad weather plus two of their active spaces officers who will organise a couple of activities including a timed biking



**Promotion of Health and wellbeing through healthy lifestyles:
What facilities would you like to see at Whitworth Sports Centre?**



Rossendale Leisure Trust is looking to promote Whitworth High Sports Centre; currently memberships are £15.00 per month which includes access to the modern equipped gym facilities on evenings and weekends.

At Whitworth High Sports Centre you can also hire out the main sport hall for a variety of activities from Badminton, Football, Netball and more.

Rossendale Leisure Trust are looking to introduce a new programme of Fitness Classes to complement the current gym membership and would like to consult with the residents of Whitworth to find out what activities you would like to see on offer for adults and children,

If you have any suggestions please contact Vicky Lord the Duty Manager on 01706 343218 ext 6 or vicky.lord@rltrust.co.uk . We look forward to hearing from you.



Promotion of Health and wellbeing through healthy lifestyles:

National Breastfeeding Awareness Week – 24th – 30th June

East Lancashire “Believing in Breastfeeding Campaign” Lancashire Care NHS Foundation Trust’s Health Improvement Service, based in East Lancashire, is using the theme “Believing in Breastfeeding” to both promote breastfeeding and celebrate current breastfeeding rates in East Lancashire. Currently, 4 to 6 weeks after the birth of their babies, 38% of mums are still breastfeeding their babies.



The Health Improvement Service would like to encourage multi-agency partners to take the opportunity to promote breastfeeding during National Breastfeeding week. To support them with this, the Service has produced a downloadable display pack, which is available via email request.

The pack has been developed using the mums’ own words and experiences related to breastfeeding and highlights the range of support available in East Lancashire, for parents-to-be and mums, following the birth of their babies.

Change4Life

Thousands of people have already made a Change4Life and more and more are joining every day.

The National Public Health marketing tool Change4Life’s approach to the Olympics is Games4Life promoting activity particularly in the run up to the Olympics.

<http://www.nhs.uk/Change4Life/Pages/games4life.aspx>

There is also the North West Olympic website which people may like to look at: They’ve got everything you need to promote Olympic activity in the North West and information on events happening.

<http://www.nwfor2012.com/>

Support the Communities Against Cancer project



‘Communities against Cancer’ project raises awareness of the early signs and symptoms of breast, bowel and lung cancer to encourage early diagnosis and to save lives, encouraging people to see their GP without delay.

If anyone would like the team to come along to deliver an Awareness Session to Schools, Colleges, Community Centres, Groups, Luncheon Clubs etc. please contact Kim Wood or Jeanette Gibson on 01254-358026 or email kim.wood@lancashirecare.nhs.uk or

Communities against Cancer are supporting the current National Campaign ‘BE CLEAR ON CANCER’ - “Been coughing for 3 weeks?” Tell your Doctor.

Lung cancer is the second most common cancer in England & Wales – 33,000 new cases a year, killing more people than any other cancer.

Although it is more common in smokers, around 1 in 8 people diagnosed have never smoked. Other symptoms may include repeated chest infections, coughing up blood, breathlessness, feeling more tired than usual for some time, losing weight for no obvious reason and an ache or pain in the chest or shoulder that has lasted some time.

If you notice any of these symptoms, tell your doctor right away.

Whitworth Neighbourhood Forum Area - who to contact for projects, issues and queries

Locality Manager: Alison Wilkins

01706 252593 / alisonwilkins@rossendalebc.gov.uk

Locality Officer: Simon Whiteside

01706 252568 / simonwhiteside@rossendalebc.gov.uk

Team Leader: Lucy Nearney

01706 252529 / lucynearney@rossendalebc.gov

Simon can help you with issues concerning environmental enforcement such as dog fouling, litter, fly tipping, abandoned vehicles, untidy land and property, accumulations of waste on private land, fly posting, refuse and recycling, and also issues or general enquires about your neighbourhood and environment.

Lucy will help you with queries regarding day to day operational issues as she manages the grounds maintenance team for the area. This includes things such as grass cutting, shrub maintenance, parks and open spaces maintenance and playgrounds.

Alison can help with more strategic issues which affect the area, larger scale projects or those involving other agencies and organisations, as well as advise and support community groups with projects or issues. Alison is also the contact for the Whitworth Neighbourhood Forum.

For more information about any of the items in this newsletter, please contact:

Alison Wilkins, Locality Manager, Communities Team, Rossendale Borough Council,
Stubbylee Hall, Stubbylee Lane, Bacup, OL13 0DE

01706 252593 / alisonwilkins@rossendalebc.gov.uk

If you can help distribute this newsletter—to colleagues, friends, neighbours, community groups etc. and would like more copies please let me know—it's also available electronically and via the Council website—www.rossendale.gov.uk

If you would like to place an article in the next newsletter, please send your text and photos to Alison Wilkins as above.

Deadline for next newsletter is 26 September. If you're involved in a local project, tell us about it and blow your trumpet!

