



E-3120 TURBINE APPEARANCE AND FINISH

Height-Side Farm,

Bacup,

OL13 9UG















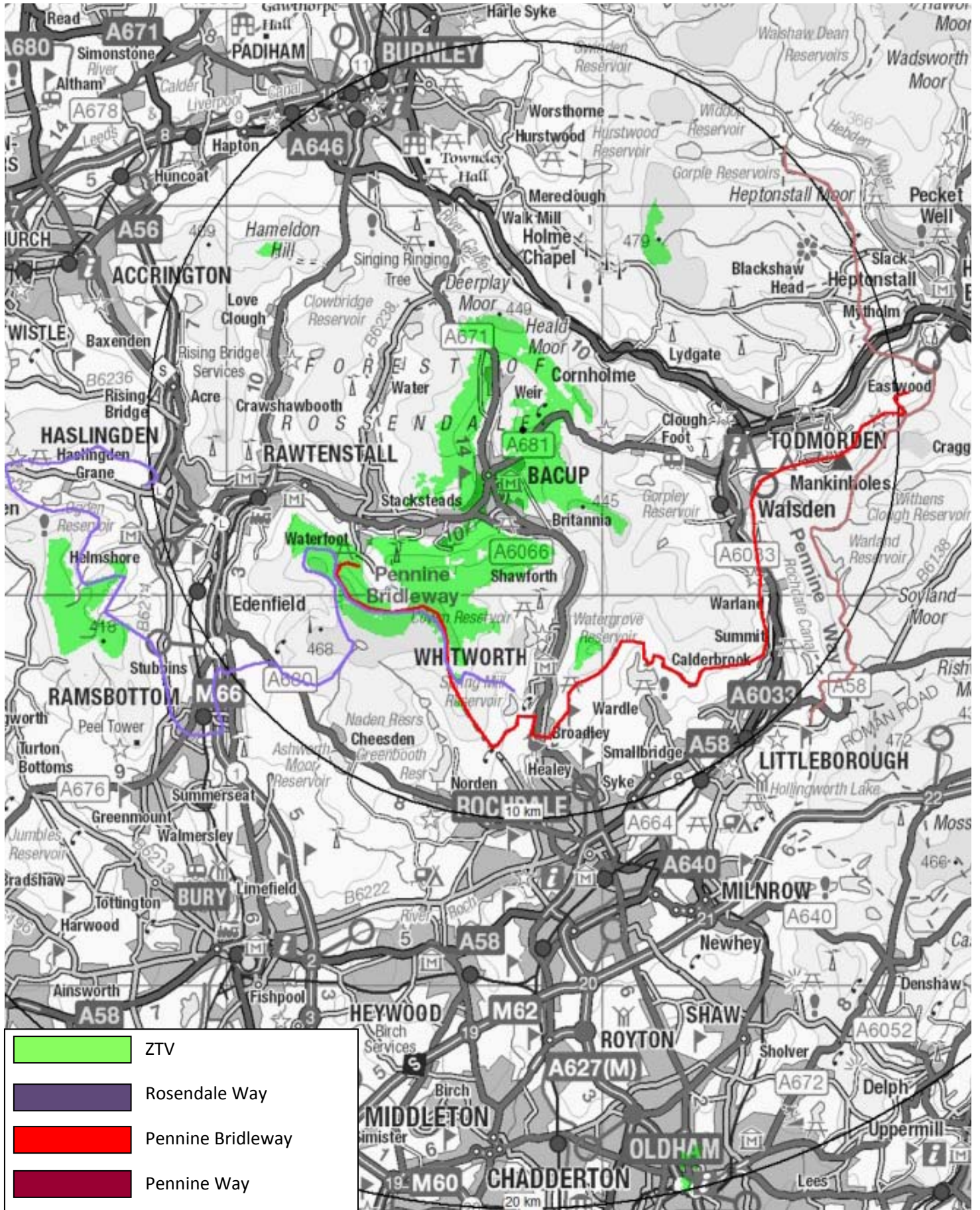
Zone of Theoretical Visibility for the development of 1.no Endurance E-3120 Wind Turbine at Heightside Farm, Todmorden Road, Bacup, Lancashire OL13 9UG

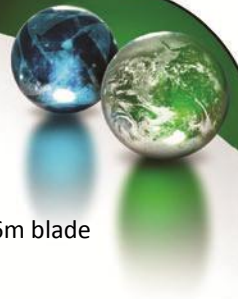
The image represents the Zone of Theoretical Visibility (ZTV) for 1.no Endurance E-3120 Wind Turbine at Heightside Farm. The target height for the ZTV is the turbine nacelle (hub). The data is presented on an OS1:250,000 scale map and uses OS Panorama DTM at the supplied 50m grid size.

This ZTV calculation is centred on the turbine position and extends out over a radius of 20km. It presents a 'bare earth' scenario which takes into account topography but does include the screening effect of structures or vegetation.

The Earth's curvature and light refraction have been included in the calculation and a viewer height of 2m has been assumed.

Three recognised long distance recreational routes (Rossendale Way, Pennine Bridleway and Pennine Way) have been highlighted. The ZTV extends on to small sections of the Rossendale Way (Purple) and the Pennine Bridleway (Red). However, these are over 5km away from the turbine location. At this distance, the development is considered to have a negligible visual impact. There is a small section of the Rossendale way over 10km away (Southwest of the development) which falls into the ZTV. Again, at this distance, the development is considered to have a negligible visual impact. The Pennine Way (indicated in brown) falls well outside the ZTV.





PHOTOMONTAGES

To aid the planning permission for the installation of one Endurance E-3120 24.6m nacelle height, 9.6m blade radius (50KW) wind turbine located at:

Height-Side Farm,
Bacup,
OL13 9UG





Location Map

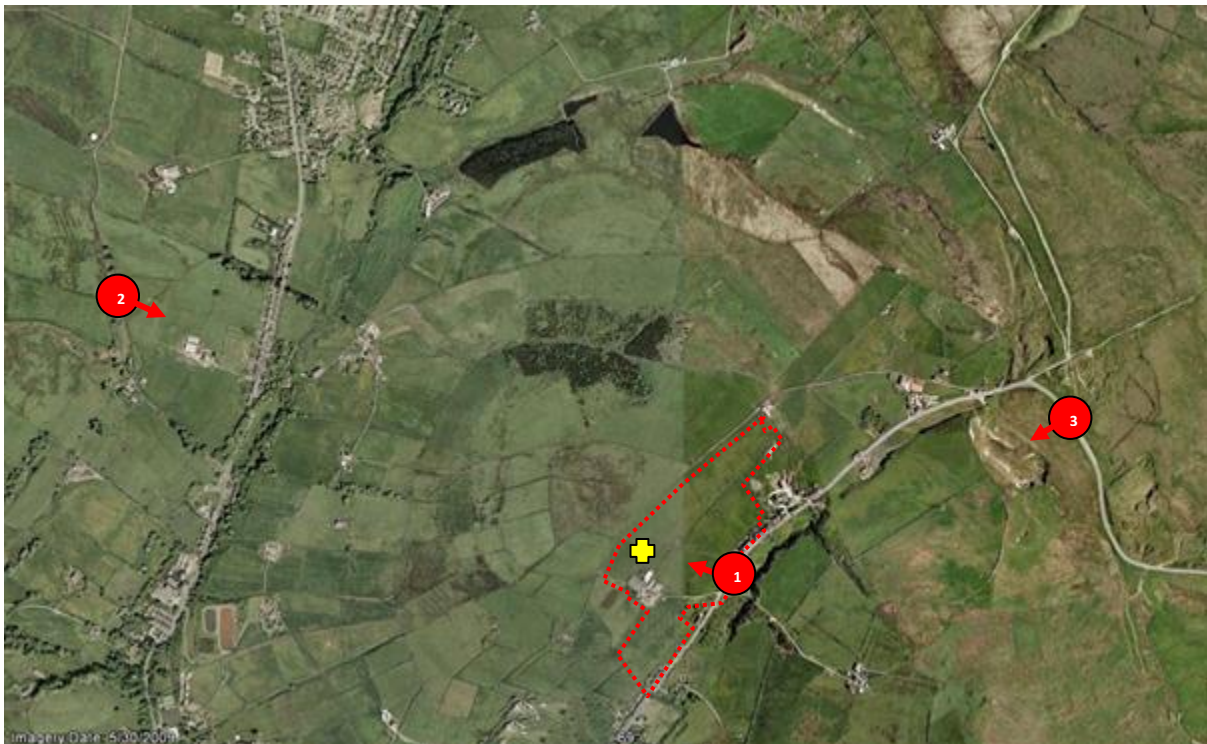



Photo location 


Wind Turbine 



Image 1 - looking west from Todmorden Road – distance of 230m



Existing View



Proposed View - Wind Turbine visible



Image 2 - looking east from Bacup Old Road – distance of 1.44km



Existing view



Proposed View – Wind Turbine just barely visible (note that it is set against a hill top back drop)



Image 3 – looking South West from the intersection of Todmorden road and Bacup Road – distance of 1.08km



Existing View



Proposed View – Wind Turbine just barely visible although the existing pylons are must more prominent in the landscape.



PHOTOMONTAGES

Cumulative Visual Assessment to Support Applications 2012/0178 and 2012/0179 for the Amendment to Change from Three Gaia 18m To Hub Wind Turbines to Two Endurance 24.6m to Hub Wind Turbines.

Prepared for DC21 Ltd


25 June 2012




Viewpoint Title:	Parrock Farm from Todmorden Road: Proposed Endurance Turbine with Approved Turbines at Reaps Moss			IMAGE 1
Viewpoint Coordinates:	X388036/Y423969	Direction of View	118°	25.06.2012
Horizontal Field of View:	46.5°	Viewing Height:	2m	www.cwp-ltd.com






Viewpoint Title:	Parrock Farm from Todmorden Road: Approved GAIA Turbines with Approved Turbines at Reaps Moss		IMAGE 2 25.06.2012 www.cwp-ltd.com 	
Viewpoint Coordinates:	X388036/Y423969	Direction of View		118°
Horizontal Field of View:	46.5°	Viewing Height:		2m




Viewpoint Title:	Height Side Farm from Todmorden Road. Proposed Endurance Turbine.			IMAGE 3 25.06.2012 www.cwp-ltd.com 
Viewpoint Coordinates:	X388021/Y423955	Direction of View	329°	
Horizontal Field of View:	46.5°	Viewing Height:	2m	




Viewpoint Title:	Height Side Farm from Todmorden Road. Approved Gaia Turbine.			IMAGE 4 25.06.2012 www.cwp-ltd.com 
Viewpoint Coordinates:	X388021/Y423955	Direction of View	329°	
Horizontal Field of View:	46.5°	Viewing Height:	2m	




Viewpoint Title:	Height Side Farm/Parrock Farm from Bacup Golf Course: Proposed Endurance Turbines with Approved Turbines at Todmorden Moor			IMAGE 5 25.06.2012 www.cwp-ltd.com 
Viewpoint Coordinates:	X386103/Y423254	Direction of View	66.54°	
Horizontal Field of View:	46.5°	Viewing Height:	2m	




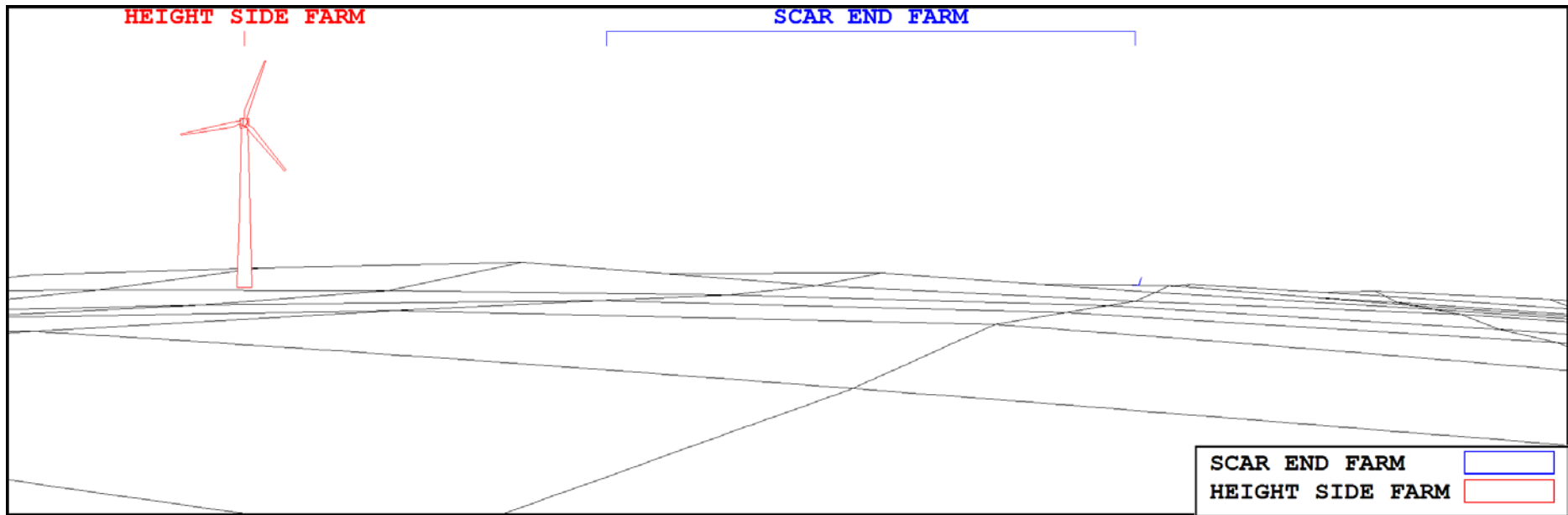
Viewpoint Title:	Height Side Farm, Parrock Farm from Bacup Golf Course: Approved GAIA Turbines with Approved Turbines at Todmorden Moor			IMAGE 6 25.06.2012 www.cwp-ltd.com 
Viewpoint Coordinates:	X386103/Y423254	Direction of View	66.54°	
Horizontal Field of View:	46.5°	Viewing Height:	2m	



Viewpoint Title:	Height Side Farm from Todmorden Old Road: Proposed Endurance Turbine with Approved Turbines at Todmorden Moor		IMAGE 7 25.06.2012 www.cwp-ltd.com 	
Viewpoint Coordinates:	X387700/Y423914	Direction of View		50°
Horizontal Field of View:	46.5°	Viewing Height:		2m



Viewpoint Title:	Height Side Farm from Todmorden Old Road: Approved Gaia Turbine with Approved Turbines at Todmorden Moor		IMAGE 8 25.06.2012 www.cwp-ltd.com 	
Viewpoint Coordinates:	X387700/Y423914	Direction of View		50°
Horizontal Field of View:	46.5°	Viewing Height:		2m



Wire Frame Title:	Height Side Farm from Todmorden Road. Proposed Endurance with Appealed Endurance Turbines at Scar End Farm		IMAGE 8
Viewpoint Coordinates:	X388021/Y423955	Direction of View	345°
Horizontal Field of View:	46.5°	Viewing Height:	10m

25.06.2012
www.cwp-ltd.com



The wire frame view above is taken from viewing height of 10m AOD. At this significant height only the tip of proposed Turbine #1 at Scar End Farm. From this point on Todmorden Road and at a normal viewing height of around 2m there would be no intervisibility between the proposed development at Height Side Farm and the development currently under appeal at Scar End Farm.

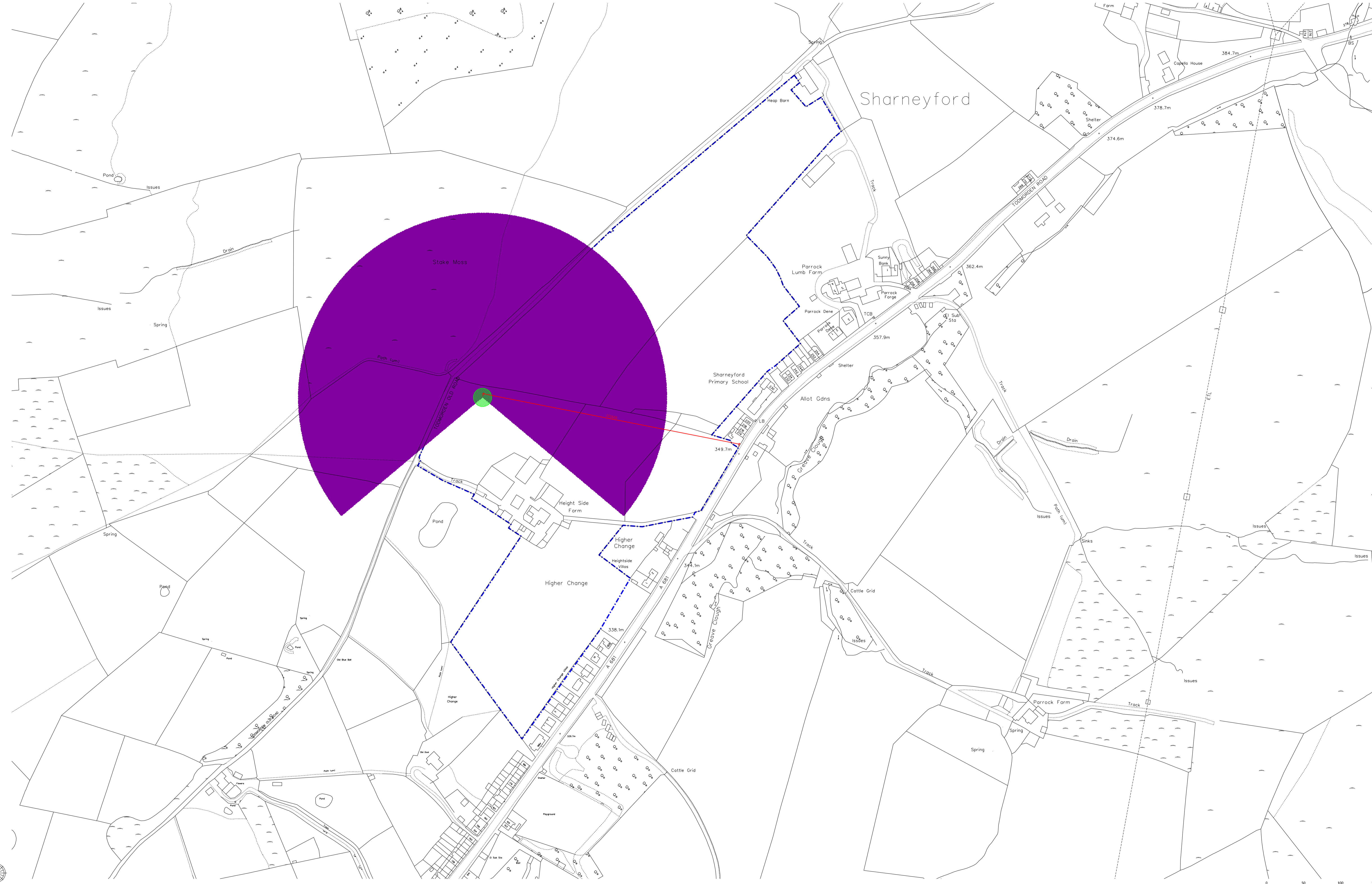
Disclaimer

The information contained herein is believed to be correct at the time of issue, but no liability can be accepted for any inaccuracies. Consulting With Purpose Ltd cannot accept any responsibility for any loss or damage resulting from the use of the material contained herein.

Third Party Disclaimer

Any disclosure of this report to a third party is subject to this disclaimer. The report was prepared by Consulting with Purpose Ltd at the instruction of, and for use by, our client named on the front of the report. It does not in any way constitute advice to any third party who is able to access it by any means.

CWP Ltd
45 New Laithe Hill
Newsome
Huddersfield
HD4 6RF
www.cwp-ltd.com
info@cwp-ltd.com



Do not scale this drawing
 All dimensions are to be confirmed on site
 Contractors must check all dimensions from this drawing to ensure they are correct on site
 This drawing is for use only for information as a reference
 For other information refer to the relevant documents and any other relevant drawings

LOCATION PLAN

NOTES

KEY

- WIND TURBINE
- SITE OWNERSHIP BOUNDARY

REV	DATE	DESCRIPTION	BY
B	19.06.2022	WINDMILL RELOCATED	DL
A	28.05.2022	DESCRIPTION	JH
REV	DATE	DESCRIPTION	BY
REVISIONS			

DRAWING NUMBER	REVISION	DATE	SCALE
05	B	MAR 12	1:1250
SHEET	STATUS		
A0	PLANNING		

PROJECT TITLE
 WIND TURBINE INSTALLATION AT
 HEIGHT SIDE, BACUP

DRAWING TITLE
 SHADOW FLICKER



11150