

LOCATION PLAN.

WHITWORTH HISTORICAL SOCIETY & MUSEUM
 NORTH STREET,
 WHITWORTH,
 OL12 8RE



NORTH

SCALE 1:1250

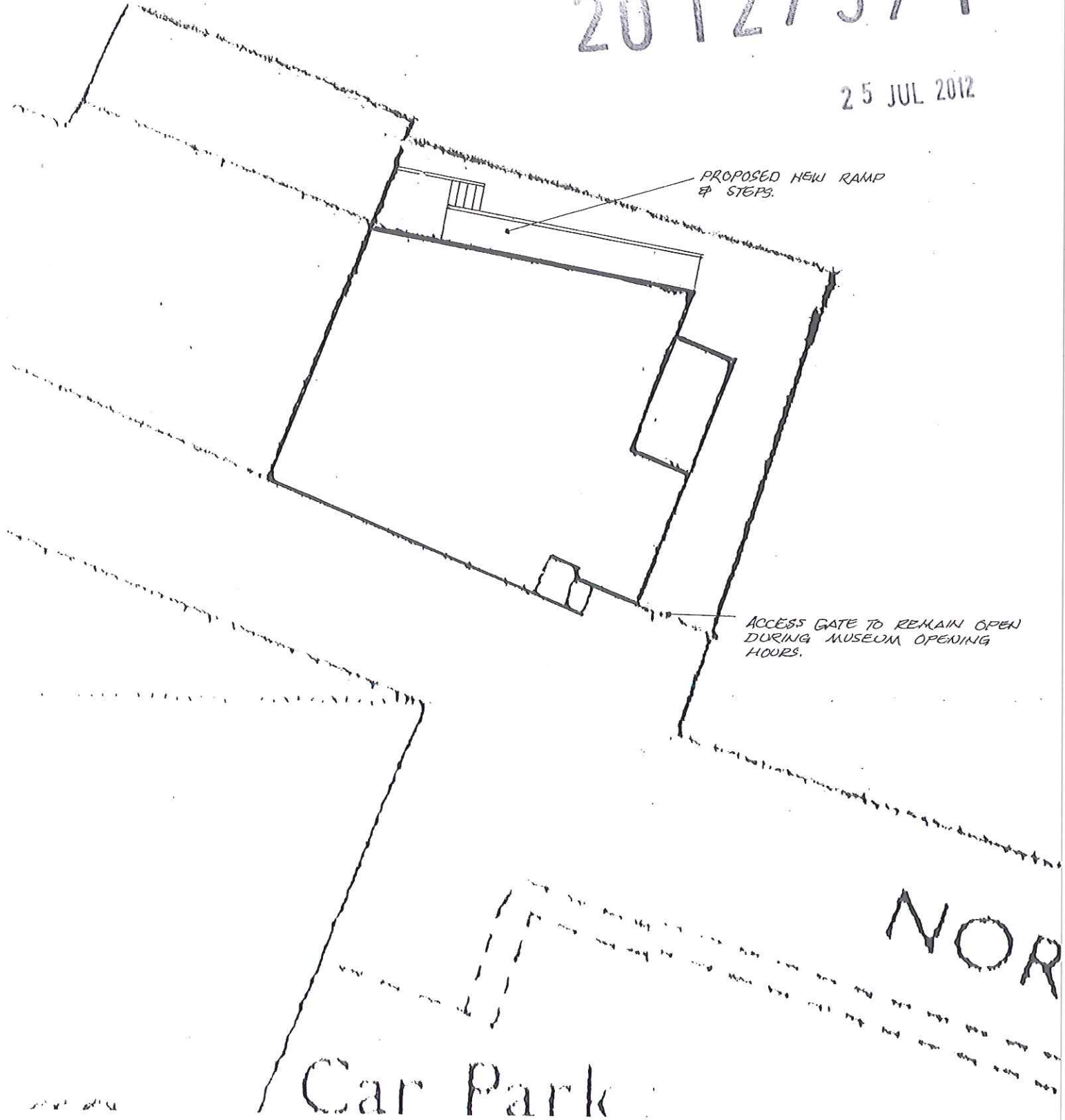
BLOCK PLAN.

WHITWORTH HISTORICAL
SOCIETY & MUSEUM,
NORTH STREET,
WHITWORTH,
OL12 8RE.

SCALE APPROX 1:200

2012/371

25 JUL 2012

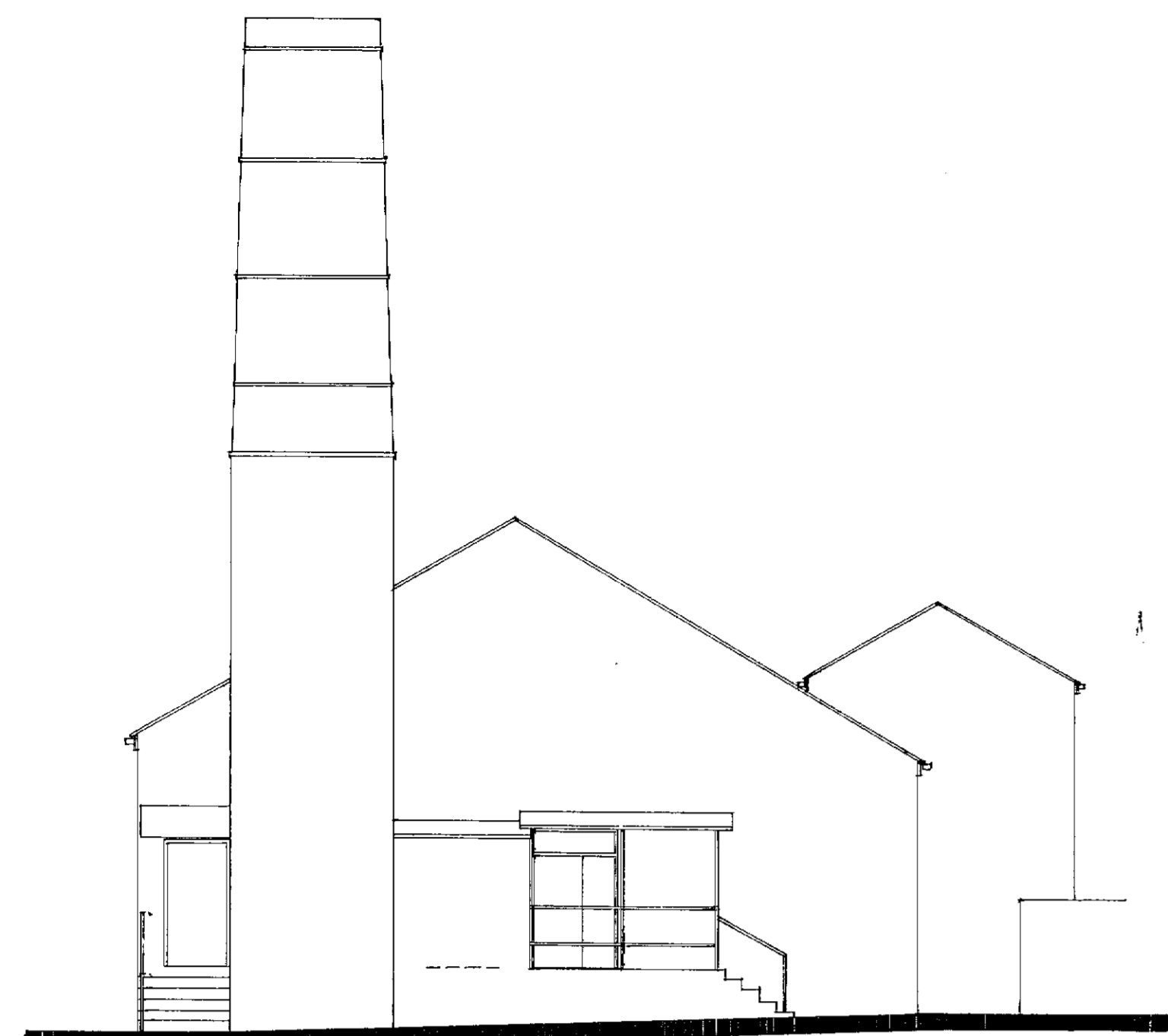


PROPOSED NEW RAMP
& STEPS.

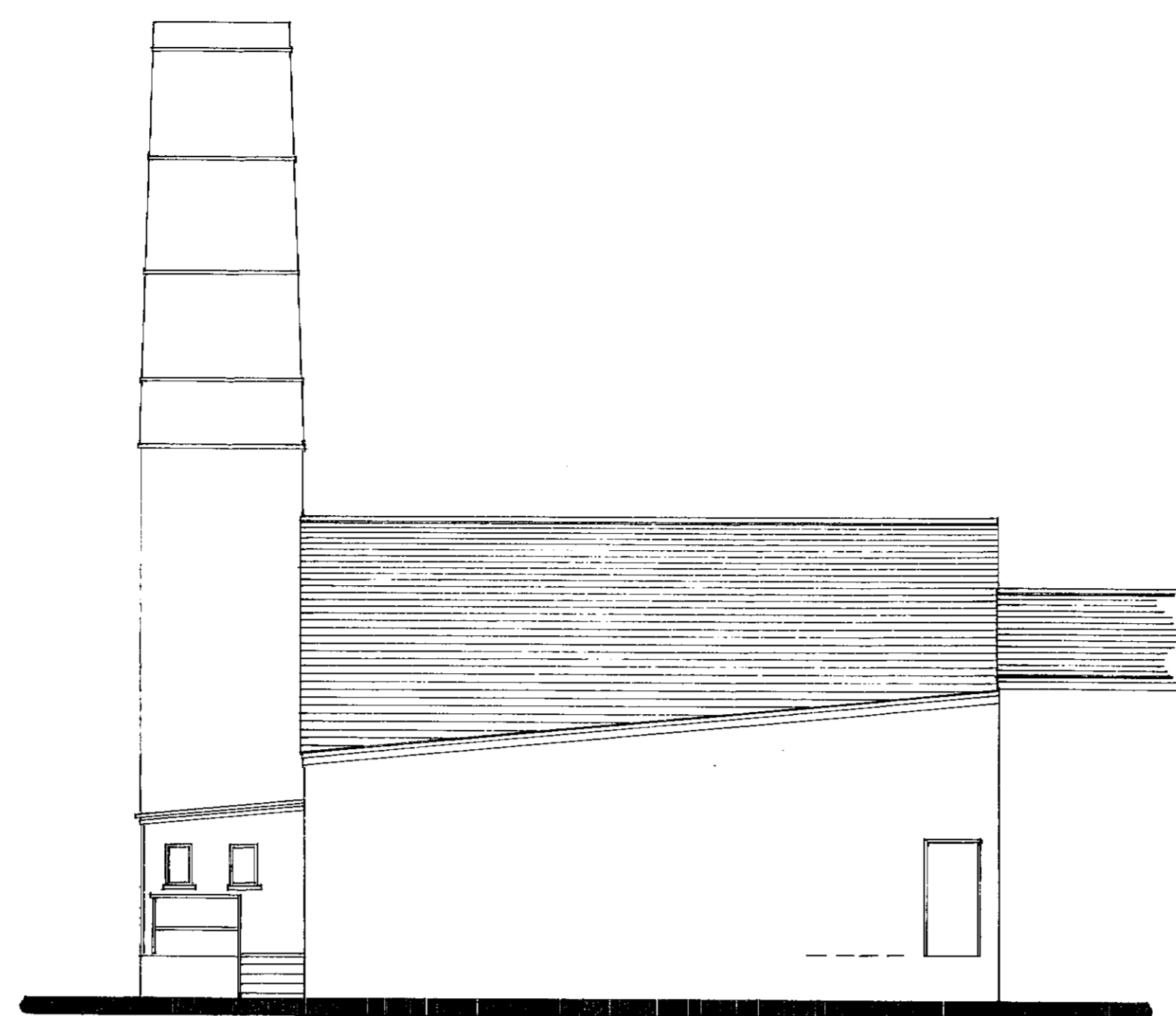
ACCESS GATE TO REMAIN OPEN
DURING MUSEUM OPENING
HOURS.

NOR

Car Park

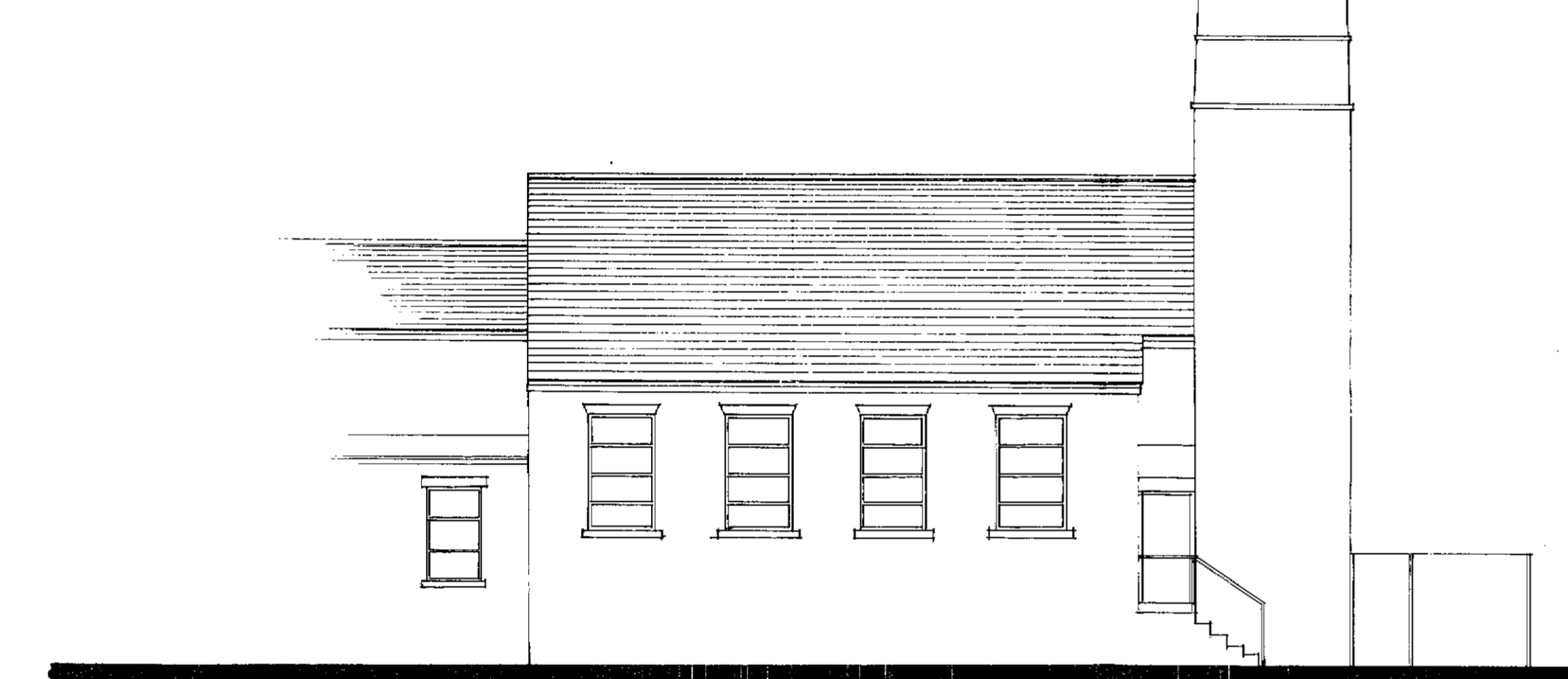


EXISTING EAST ELEVATION

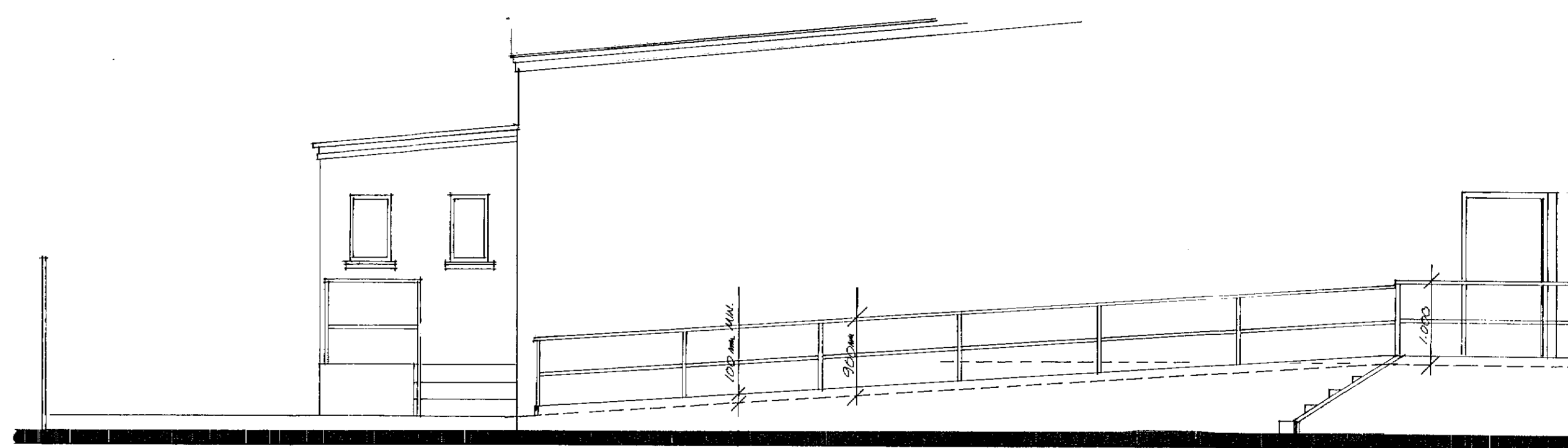


EXISTING NORTH ELEVATION

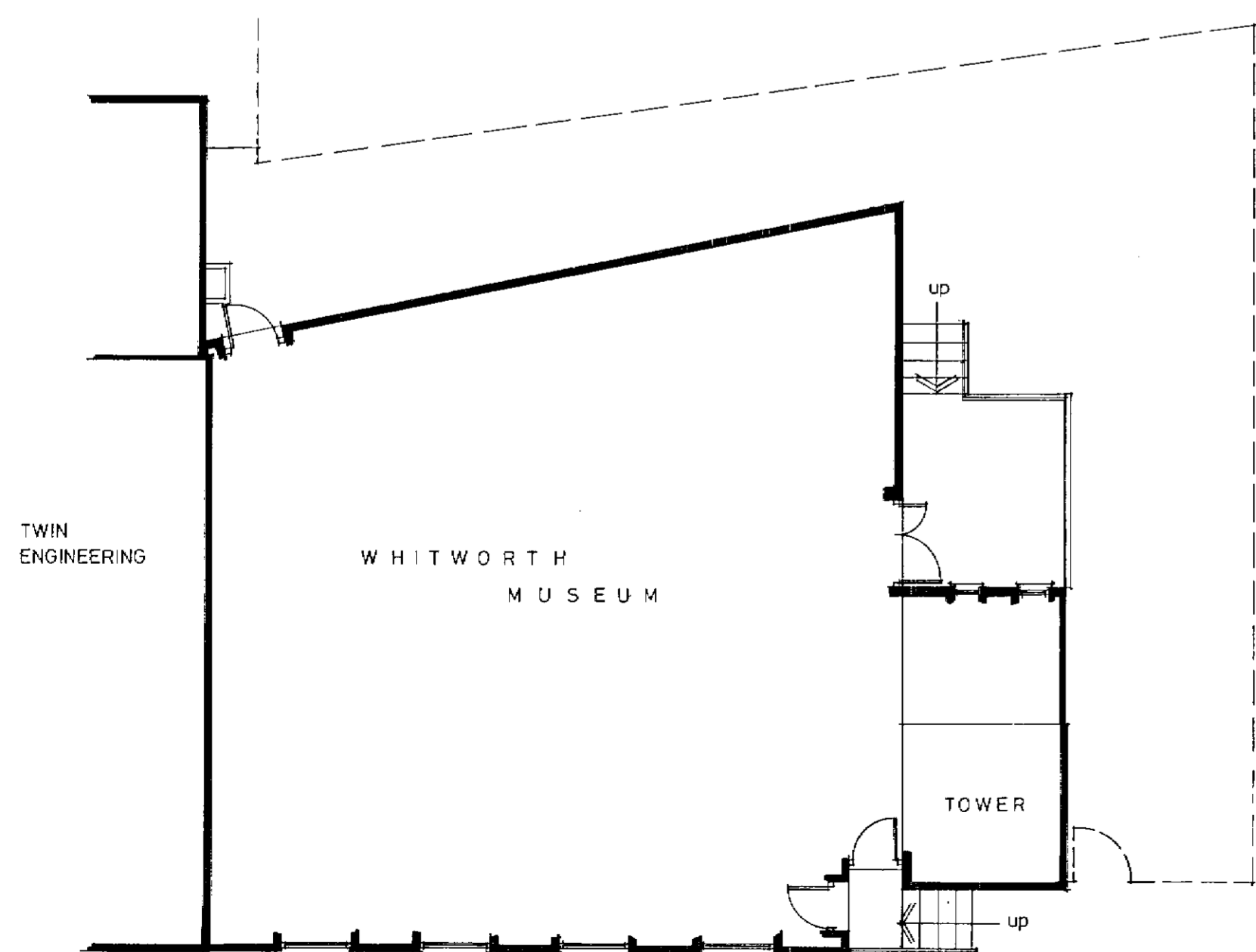
FORM NEW RAMP TO EXTERNAL DOOR WITH COMPLEMENTARY STEPS
 FORM FACING BRICKWORK WALLS WITH MIN 100mm UPSTAND TO OPEN SIDE
 FORM CONCRETE RAMP, APPROX 1:20 GRADIENT
 FORM LEVEL LANDINGS TO TOP & BOTTOM, MIN 1200mm
 WIDTH OF RAMP TO BE 1200mm MIN SURFACE WIDTH WITH AN UNOBSTRUCTED WIDTH OF 1,000mm
 FIT HANDRAIL TO OPEN SIDE OF RAMP & STEPS, MIN 1000 ABOVE SURFACE OF LANDINGS & MIN 900mm ABOVE FINCH LINE OF RAMP & STEPS
 HANDRAIL TO EXTEND MIN 300mm BEYOND TOP & BOTTOM OF RAMP & TERMINATE WITH A CLOSED END & NOT FRAYCT INTO ROUTE OF TRAVEL
 RAMP, LANDINGS & STEP FINISH TO BE NON-SLIP
 HANDRAIL TO BE CAPABLE OF WITHSTANDING A HORIZONTAL FORCE OF 0.7kN/m



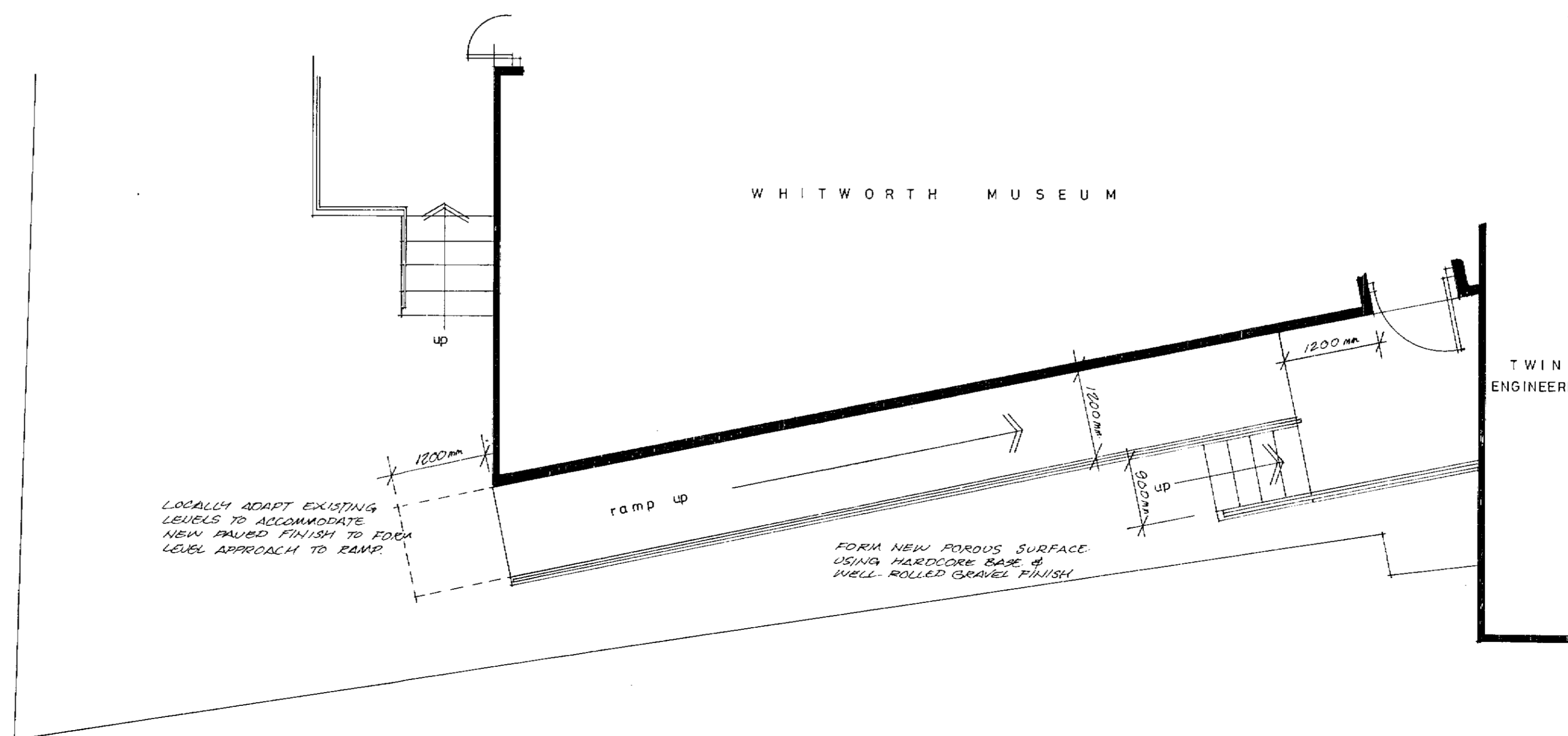
EXISTING SOUTH ELEVATION



PROPOSED PART NORTH ELEVATION



EXISTING GROUND FLOOR PLAN



PROPOSED PART GROUND FLOOR PLAN

2012/371

25 JUL 2012

TWIN ENGINEERING

project
 PROPOSED RAMP ACCESS TO WHITWORTH MUSEUM, NORTH STREET, WHITWORTH, OL12 8RE.

client
 WHITWORTH HISTORICAL SOCIETY & MUSEUM.

drawing
 EXISTING & PROPOSED PLANS & ELEVATIONS.

scale
 1:100, 1:50 JULY '12

drawing no
 01

MIKE ILLSLEY
 ARCHITECTURAL & INTERIOR DESIGNER
 10 VICTORIA STREET, WHITWORTH
 ROCHE-DALE OL12 8PL 01705344528