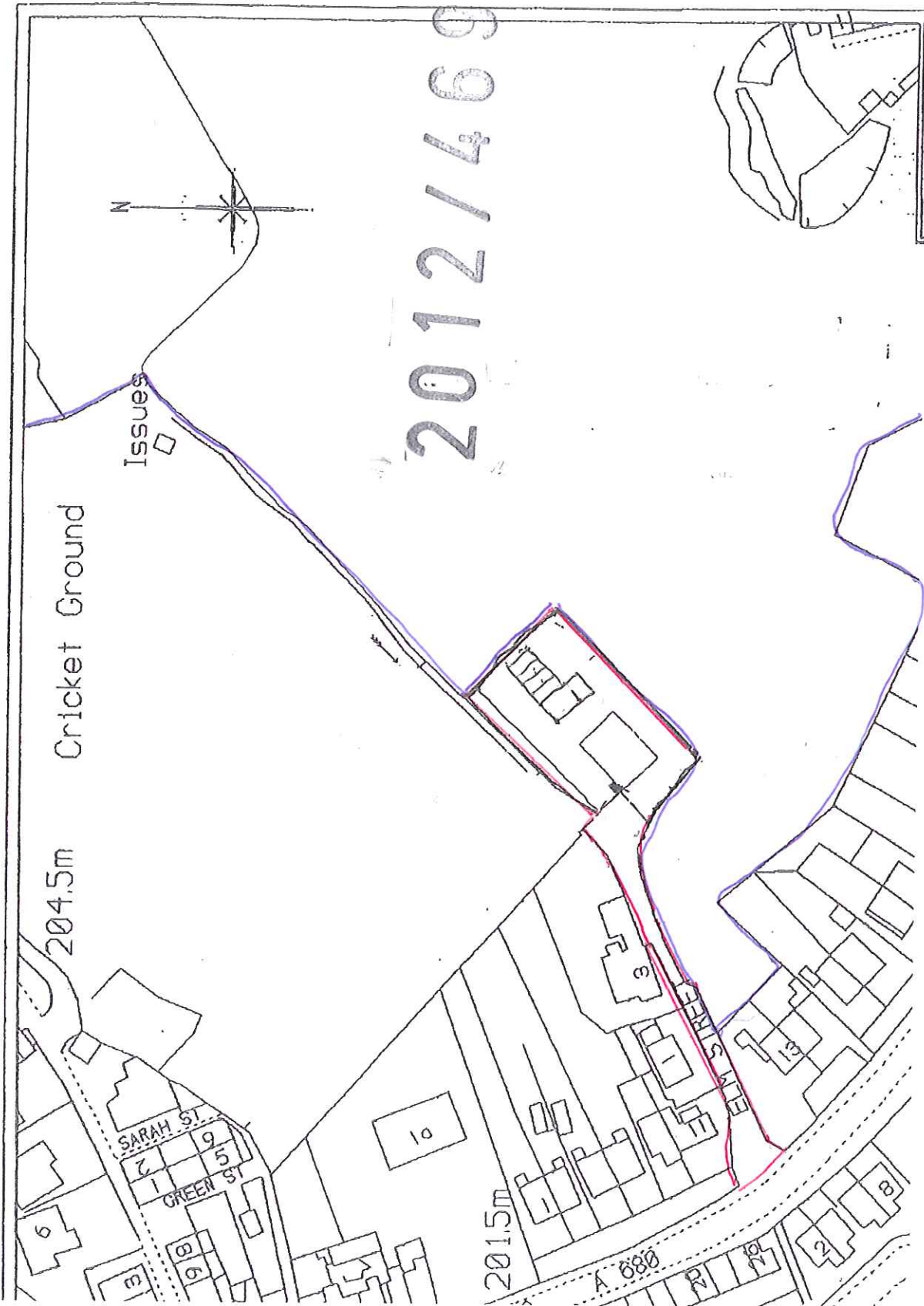
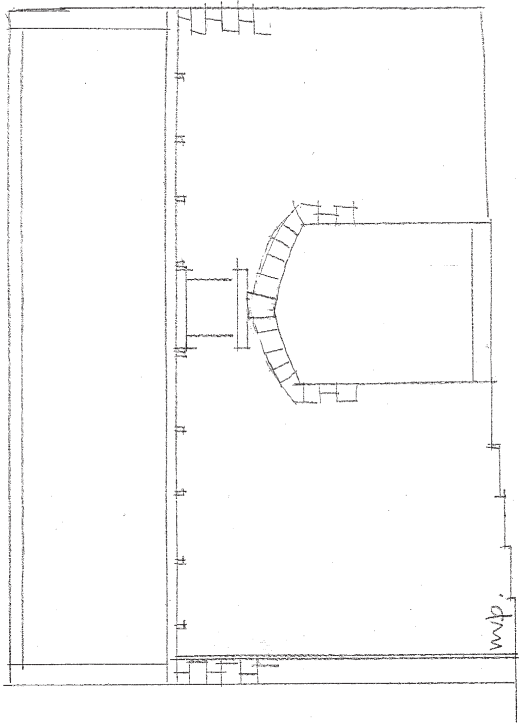
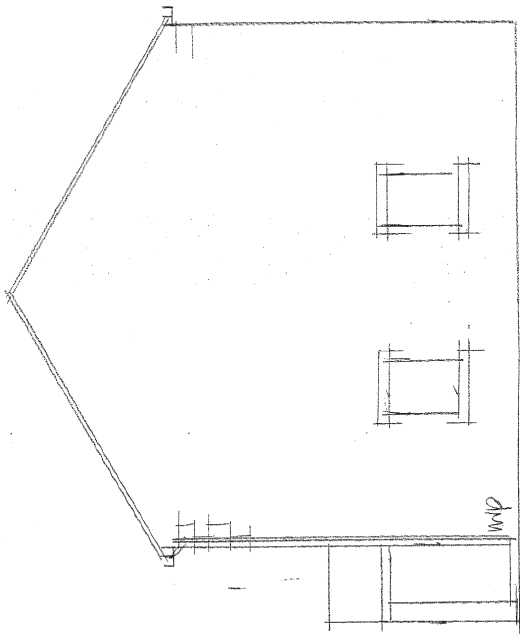


04 OCT 2012

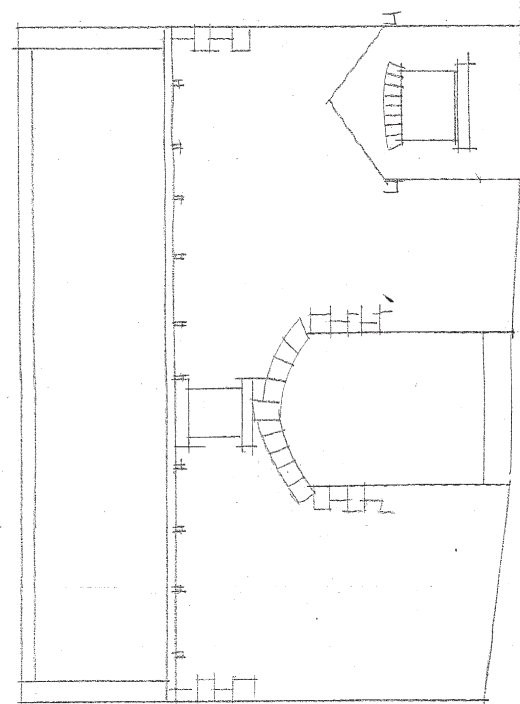




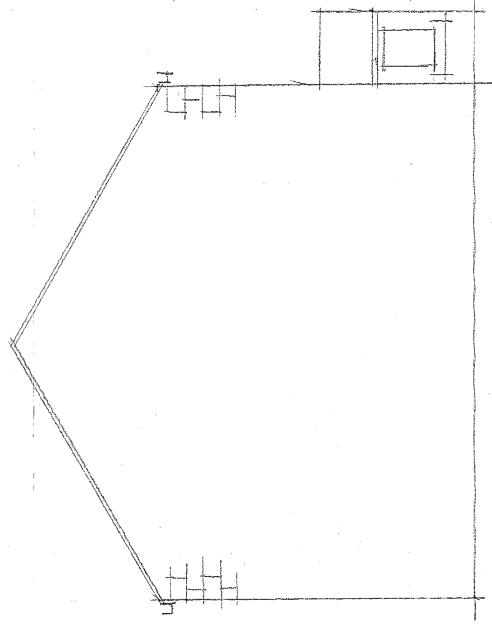
REAR



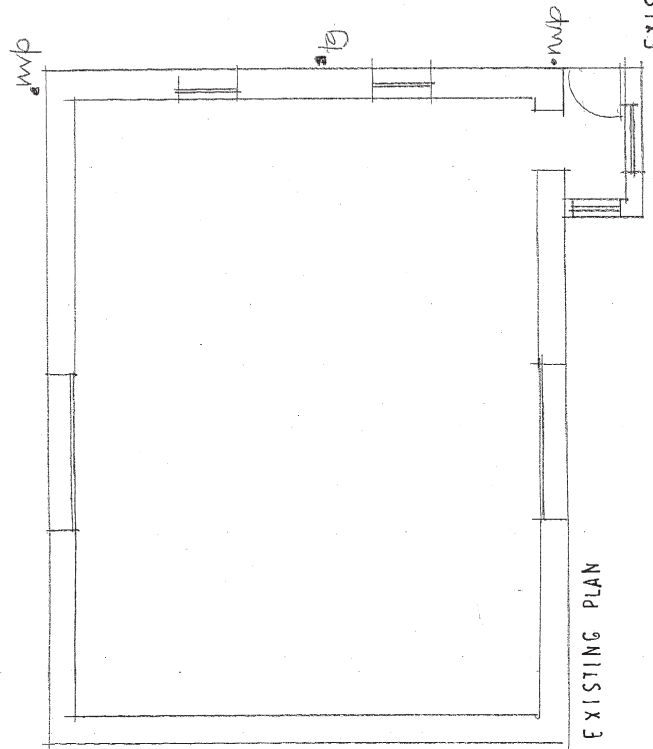
SIDE



EXISTING FRONT



SIDE



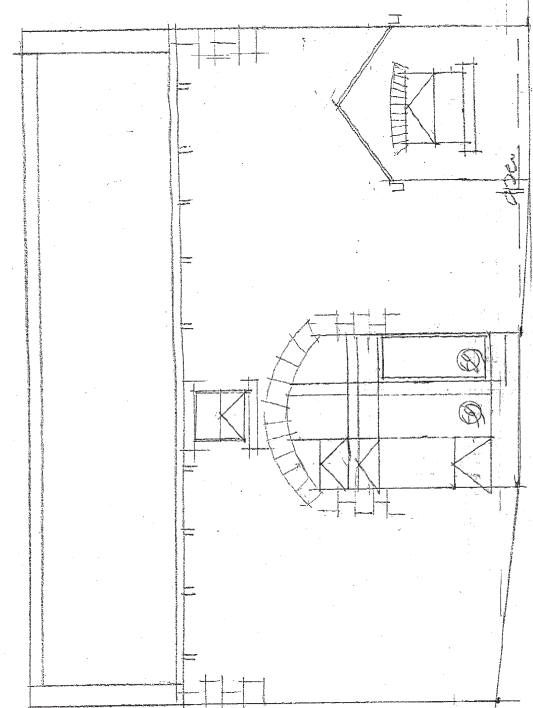
EXISTING PLAN

2012/269

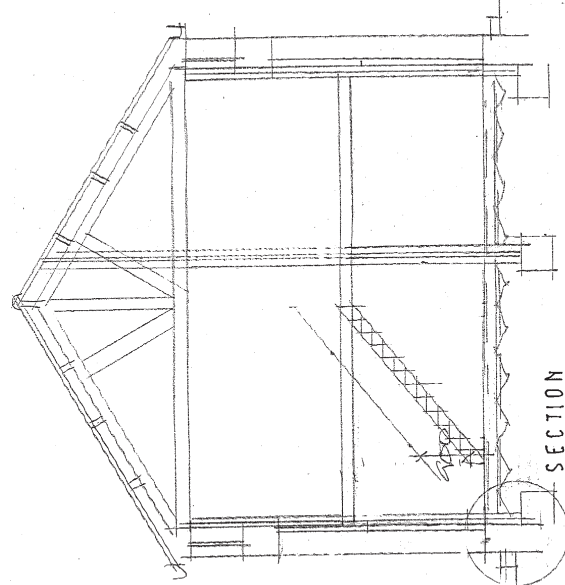
04 OCT 2012

EXISTING LAYOUT + ELEVATIONS • MANGUE FOLD BARN ELM STREET EDENFIELD 1-50

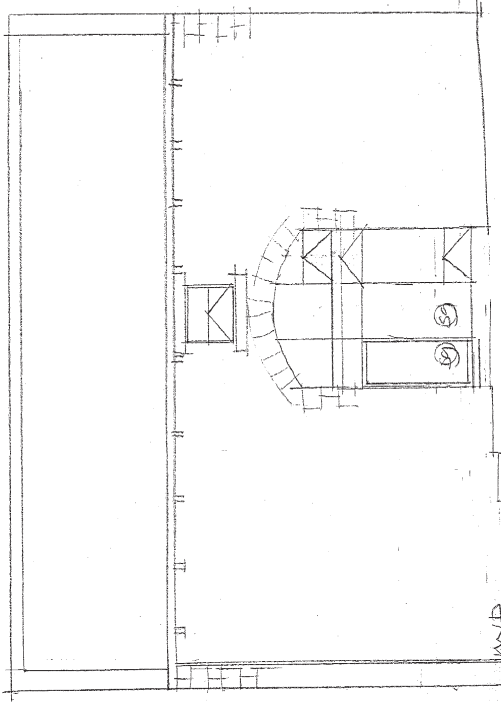
DWG NO
M/B/E/3



FRONT



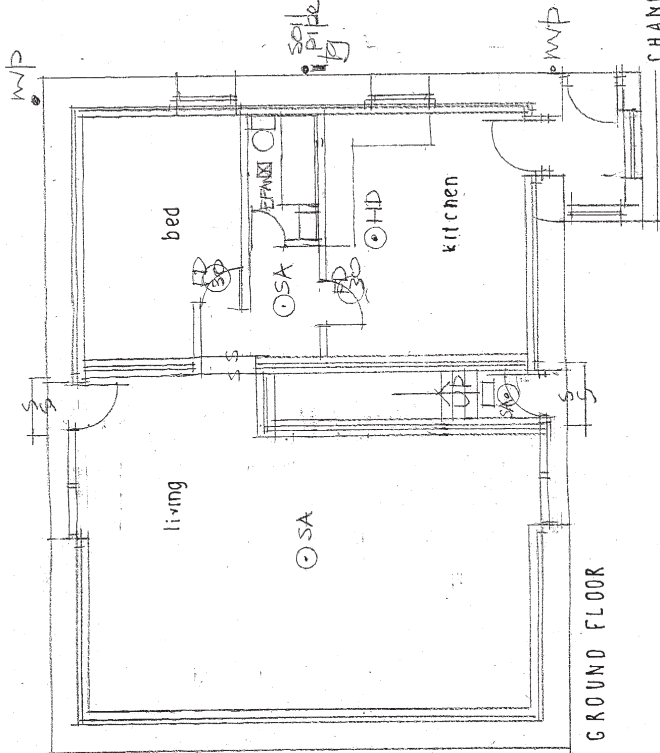
SECTION



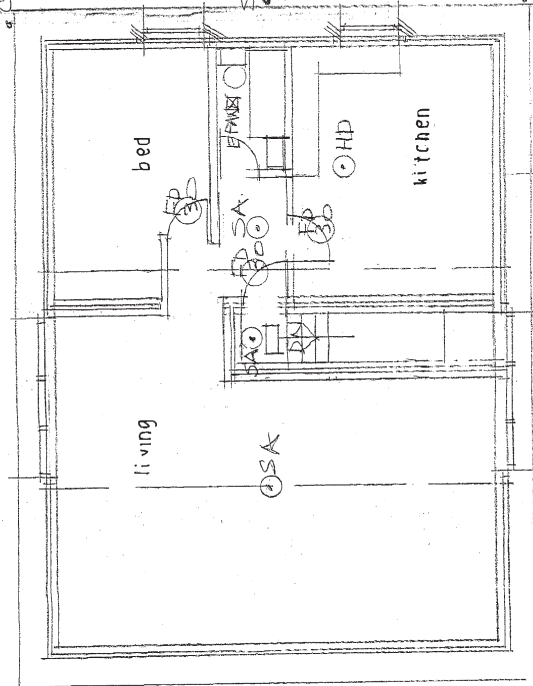
REAR

NOTES

- ALLOW FOR PERMITTING UNDER THE PARTY WALL ACT 1939
- ALLOW FOR MAKING ALL CONSTRUCTIONAL MATERIALS AVAILABLE BEFORE WORKS START
- ALLOW FOR MAKING ALL CONSTRUCTIONAL MATERIALS AVAILABLE BEFORE WORKS START
- ALL WORKING DIMENSIONS TO BE CHECKED ON SITE BEFORE CONSTRUCTION
- ALL STRUCTURAL MEMBERS STRESS GRADED STEEL I BEAMS
- ALL CAVITIES TO BE CONTINUOUS CFT DOWN INSULATED CAVITY CLADDING TO
- THROUGH WALLS TO BE CONTINUOUS CFT DOWN INSULATED CAVITY CLADDING TO
- THROUGH WALLS TO BE CONTINUOUS CFT DOWN INSULATED CAVITY CLADDING TO
- ALL ELECTRICAL WIRING TO BE TO THE REGULATIONS BY REGISTERED ELECTRICIAN
- ISSUING COMPLETION CERTIFICATE TO PART 18/5/71
- FIX SMOKE ALARMS HEAVY DUTY FOR TO FITCHEN 15LITRES PER
- FIX EMERGENCY LIGHTING TO BE
- FIX CONDENSATION FAN TO SOLITRES PER SECOND TO FITCHEN 15LITRES PER
- SECOND TO BATHROOM



GROUND FLOOR



FIRST FLOOR PLAN

CHANGE OF USE BARN TO TWO FLATS

MANGUE FOLD BARN, ELM STREET

EDENFIELD 1.50

2012/469

04 OCT 2012

APPROVED 4 FEBRUARY 2012 A
REDFORD ARCH TC TWO FLATS

PLAN NO
MB/6/1A

