

Haslingden Pool Options EIA Evidence Appendices

Appendix 1 Background and overview information about Haslingden Swimming Pool..... 2

Appendix 2 Facility usage data..... 3

Appendix 3 User groups potentially affected and mitigating actions considered / alternatives considered 5

Appendix 4 Details of schools using Haslingden Pool..... 11

Appendix 5 Comparison of services currently available at each swimming pool facility within Rossendale 12

Appendix 6 Alternative pool facilities within Rossendale and neighbouring areas 13

Appendix 7 Bus routes information to local facilities & location of swimming pool users..... 14

Appendix 8 Options for reduced costs: Changes to opening times for Option 2 15

Appendix 9 Local ethnicity data 17

Last edited 15.11.12_EH

Appendix 1 Background and overview information about Haslingden Swimming Pool

Background Information

Haslingden Swimming Pool was built in 1936. The building houses one 25 yard by 8 yard 4 lane swimming pool and a health suite. The health suite comprises a sauna box, steam room and spa pool. There is a small car park to the front of the pool with 19 car parking spaces, two of which are designated disable parking.

The pool is accessible to disabled users, however there are restrictions. Disability access at Haslingden Swimming Pool consists of a ramp to the front entrance, Trixy Lift to transport people from a wheelchair to the pool side, and a hoist to lower them in and out of the pool, handrails in the toilets and shower area.

There are currently no handrails along corridors, no disabled/accessible toilet facilities, no designated disabled changing room with changing bed and suitable seating; no disabled/accessible shower area, no stair-lift enable disabled people access to the spectator area.

Consideration of reasonable adjustments should take into account:

- how effective the change will be in avoiding the disadvantage
- its practicality
- the cost
- the organisation's resources and size
- the availability of financial support.

Based, on this any further accessibility works is not currently economically viable.

Appendix 2 Facility usage data

The following tables set out usage data provided by Rossendale Leisure Trust:

- Table 1&2: Overall usage
- Table 3: Break down of current user groups

Table 1: Haslingden Swimming Pool level of use:

Year	Use
2011/12	78,300 visits
2010/11	83,017 visits
2009/10	83,547 visits
2008/09	91,190 visits
2007/08	98,788 visits
2006/07	79,701 visits

This table shows as steady decline in usage figures year on year at Haslingden Swimming Pool year on year since 2007/08.

Table 2: Usage comparison across Rossendale Leisure Trust facilities

Rossendale on the Move									
Usage comparison 2003-4 onwards									
	2003-4	2004-5	2005-6	2006-7	2007-8	2008-9	2009-10	2010-11	2011-12
HSC	112,168	116,755	134,213	119,102	150,044	167,459	182,639	207,735	
SR	64,248	95,235	105,995	107,981	94,880	79,293	42,711	48,368	
HSP	87,699	85,880	94,504	90,743	109,235	91,190	83,547	83,017	78,300
MP	110,414	118,585	123,624	119,049	122,157	133,812	135,418	127,174	
BLH	11,691	24,597	28,711	25,000	20,000	20,000			
	386,220	441,052	487,047	461,875	496,316	491,754			
		54,832	45,995	- 25,172	34,441	- 4,562			
Key:				No data recorded					
HSC= Haslingden Sports Centre									
SR=Ski Rossendale									
HSP=Haslingden Swimming Pool									
MP=Marl Pits Swimming Pool									
BLH=Bacup Leisure Hall									
Notes:									
1. Reason for decrease at Haslingden Swimming Pool 2006-7 due to removal of sunbeds									
the Trust takes view of recommendations by Environmental Health Officers									
and leading dermatologists; also concerned about potential Risk from									
use of sunbeds which may lead to possible personal injuries claims									

Table 3: Break down of user group usage

User Group	Session Details	Approximate Head Count per Week
Over 50's	3 x 1 hour sessions per week	140
Ladies Only	2 x 1 hour sessions per week	45
Adult Only	3 x 1 hour sessions per week	120
Disabled 1 to 1	3 x 1 hour sessions per week	3
Parent & Toddler	1 x 1 hour sessions per week	6
Children Lessons	52 x ½ hour sessions per week	416
1 to 1 Lessons	5 x ½ hour sessions per week	5
Children's Fun	2 x 1 hour sessions	70
Primary Schools	12 x ½ hour sessions	300
Specials Schools	1 x 1 hour per week	10
High Schools	As required	Ad hoc
Swimming Club	7 hours per week	220
Diving Club	1 hour for 10 weeks per year	24
Aqua Fit Lite	2 x 1 hour sessions	30
Aqua Fit / Aqua-cise	2 x 1 hour sessions	34
Early Bird Public swim	4 x 1¼ hours + 1 x 1 hour per week	84
Lunch Time Swim	5 x 1¼ hours per week	75
General Public Swim	33½ hours per week	Variable

Appendix 3 User groups potentially affected and mitigating actions considered / alternatives considered

User Group	Session Details	Approximate Head Count per Week	Mitigating actions to reduce impact considered
Over 50's	3 x 1 hour sessions per week	140	<p>Sessions at HSP are on a Monday/ Wednesday and Friday. Alternate sessions are available 1hour later at Marl Pits on Monday and Friday, however there is no alternate session on a Wednesday. There are no equivalent sessions at Hyndburn pool.</p> <p>The over 50's session has no coach or instructor and is very similar to lane swimming or a public swim. There are daily swimming sessions at all pools available for the over 50's to swim.</p> <p>Ramsbottom Swimming Pool in November 2012 is not offering any specific ladies only sessions or over 50's.</p> <p>Whitworth Swimming Pool in November 2012 is offering 2 x 1 hour over 50's sessions.</p> <p>No mitigating actions required as alternative sessions are available at Marl Pits and Whitworth.</p>
Ladies Only	2 x 1 hour sessions per week	45	<p>Sessions at HSP are on a Monday afternoon and Tuesday evening. An equivalent session is held at Marl Pits on a Monday morning.</p> <p>The ladies only session has no coach or instructor and is very similar to lane swimming or a public swim. There are daily swimming sessions at all pools available as an alternative to the ladies only swim.</p> <p>Ramsbottom pool in November 2012 is not offering and ladies only sessions.</p> <p>Whitworth Swimming Pool at November 2012 is offering 1 x 1 hour ladies only session.</p> <p>No mitigating actions required as alternative sessions are available at Marl Pits and Whitworth.</p>
Adult Only	3 x 1 hour sessions per week	120	<p>There are significantly more adult only swims at a wider variety of times at Marl Pits pool giving an excellent range of equivalent sessions and alternatives.</p> <p>Whitworth Pool in November 2012 is offering 2 sessions 1x 1 hour and 1 x 2 hour session.</p>

			<p>Ramsbottom Swimming Pool is offering 3 x 1 hour sessions and 5 x 1 ¾ hour sessions (early bird sessions).</p> <p>No mitigating actions required as alternative sessions are available at Marl Pits, Ramsbottom and Whitworth.</p>
Disabled 1 to 1	4 x 1 hour sessions per week	4	<p>There are 4 disabled users a week who currently access one to one swimming sessions as HSP for whom would be impacted,</p> <ul style="list-style-type: none"> - 3 children with various conditions that require specific needs (Autism, ADHD, Asperger's Syndrome, Dyspraxia). A section of the pool is sectioned for the individual 1 – 1. - 1 adult who is blind and has learning/ behavioural difficulties that Social Services hire the whole pool for exclusive use on a weekly basis. <p>Consultation to understand the needs of these users and how they can be alternatively accommodated will be explored.</p> <p>There are also 4 special needs schools (see notes on special needs school users below.</p> <ul style="list-style-type: none"> - 2 Schools outside of the Borough (Linkway House Residential School from Burnley and Oswaldtwistle School) on a weekly basis – normal set school sessions in programme - 2 Schools (Belmont School and Tor View School) on an ad hoc / occasional basis – as a normal school session. <p>In addition, Oakenhead Resource Centre users sometimes use the pool on an ad hoc basis – would like total sole use but programming timing clashes restricts this requests.</p> <p>To accommodate them at Marl Pits would require a re-programming of the pool which could possibly displace other groups. However, RLT could work with the current users to help them identify alternative facilities. This would be explored during the consultation process.</p>
Parent & Toddler	1 x 1 hour sessions per week	6	<p>There is an alternative parent and toddler session at Marl Pits as well as an extensive small pool programme ideal for parents and their children.</p> <p>At Ramsbottom as of November 2012 they offer 1 x 1 hour. No mitigating actions required as alternative sessions are available at Marl Pits, Ramsbottom.</p>
Children Lessons	52 x ½ hour sessions per week	416	<p>Children's lessons are available at both Marl Pits and Hyndburn pool, so these user groups could be accommodated at other locations.</p>

			<p>The issue may be capacity in the lessons and it might be necessary to try and schedule more swimming lessons at Marl Pits pool to accommodate the extra children.</p> <p>The programme at Marl Pits would have to be reviewed to determine whether it could accommodate more swimming lessons. This would be explored during the consultation process.</p> <p>As of November 2012, Whitworth Swimming operates swimming lessons for 23 hours per week.</p> <p>As of November 2012 Ramsbottom Swimming Pool are operating 20 hours per week.</p>
1 to 1 Lessons	5 x ½ hour sessions per week	5	<p>These could be accommodated at Marl Pits or offered places in the normal group learn to swim lessons.</p> <p>As of November 2012 nor Ramsbottom are offering one to one swimming lessons.</p> <p>No mitigating actions required as alternative sessions are available at Marl Pits.</p>
Children's Fun	2 x 1 hour sessions	70	<p>There are alternative fun sessions at Marl Pits as well as an extensive small pool programme ideal for parents and their children.</p> <p>Ramsbottom swimming pool is offering 2 x 1 hour sessions. Whitworth Pool is offering 1 x 1/12 hours.</p> <p>Both Ramsbottom and Bury operate holiday clubs.</p> <p>No mitigating actions required as alternative sessions are available at Marl Pits, Ramsbottom and Whitworth.</p>
Primary Schools	12 x ½ hour sessions	300	<p>School lessons are available at both Marl Pits and Hyndburn pool.</p> <p>Capacity in the pool programme would have to be determined during the consultation process.</p> <p>It is unlikely that all Rossendale schools could be accommodated at Marl Pits whilst maintaining a balanced programme for the public. Moves to accommodate additional schools may result in the existing schools at Marl Pits becoming dissatisfied with time changes etc.</p> <p>It may be necessary to liaise with Hyndburn, Ramsbottom and Whitworth pools to assess whether those pools have any capacity for additional school swimming lessons.</p> <p>Sufficient capacity to accommodate any changes within the existing pool programme would need to be determined during the consultation process.</p>

Specials Needs Schools	1 x 1 hour per week	10	<p>Marl Pits has the better facilities out of Rossendale pools to accommodate both children and adults with disabilities.</p> <p>Sufficient capacity to accommodate any changes within the existing pool programme would need to be determined during the consultation process.</p> <p>It is unlikely that all Rossendale schools could be accommodated at Marl Pits whilst maintaining a balanced programme for the public.</p>
High Schools	As required		<p>School lessons are available at both Marl Pits and Hyndburn pool.</p> <p>Sufficient capacity to accommodate any changes would need to be determined with the existing pool programme. It is unlikely that all Rossendale schools could be accommodated at Marl Pits whilst maintaining a balanced programme for the public.</p> <p>It may be necessary to liaise with Hyndburn, Ramsbottom and Whitworth pools to assess whether those pools have any capacity for additional school swimming lessons.</p>
Swimming Club	7 hours per week	220	<p>Haslingden swimming club are the largest of the Rossendale Swimming clubs and currently have significant pool time. If Haslingden pool were to close, it would be difficult to host the club at Marl Pits due to programming issues.</p> <p>In order to most effectively accommodate club swimming within Rossendale it may be appropriate to consider a Rossendale wide swimming club rather than 3 separate clubs in order to make maximum use of the limited time available within the programme for club swimming.</p> <p>This would need further discussion and planning with the swimming forum which would need to be explored during the consultation process.</p>
Diving Club	1 hour for 10 weeks per year	24	<p>The minimum depth for diving training is not specified but some of the training components need a minimum depth. The diving club has advised that 2.5m (depth of Haslingden Pool) is just enough to achieve this. Therefore unfortunately could not be accommodated at Marl Pits Pool. Many diving clubs train in pools of 3m depth.</p> <p>RLT would support them in their efforts to find an alternative venue of their choice as far as is reasonably possible. Possible alternative for this group have been identified at Bury Pool, Hyndburn Pool and Padiham pool all host diving clubs, which would need to be explored during the consultation process.</p>

Aqua Fit Lite	2 x 1 hour sessions	30	Alternative Aquafit sessions are held at Marl Pits, however these are held on different days. No mitigating actions required as alternative sessions are available at Marl Pits.
Aqua Fit	2 x 1 hour sessions	34	One Aquafit session is held at Marl Pits, however this is held on a different day. No mitigating actions required as alternative sessions are available at Marl Pits.
Early Bird Public swim	4 x 1¼ hours + 1 x 1 hour per week	84	There are alternative early bird swims at Marl Pits as well as an extensive public swimming programme. No mitigating actions required as alternative sessions are available at Marl Pits.
Lunch Time Swim	5 x 1¼ hours per week	75	There are alternative/equivalent lunch time swims at Marl Pits as well as an extensive public swimming programme ideal. However, Haslingden have a general public swim at lunchtime, but Marl Pits is Adult Only. This will mean reducing the current amount of public swim time for children at Marl Pits. No mitigating actions required as alternative sessions are available at Marl Pits.
Health Suite (spa and sauna)	Open all hours	92	In addition to swimming, based on RLT staff knowledge, there is likely to be an impact on older people who are currently the majority users of the HSP health suite. There is no other health suite within the leisure trust facilities, however the Riverside Health Club have a small health suite in Rawtenstall. There is no health suite provision at Ramsbottom or Whitworth Swimming Pool. There is health suite provision at Hyndburn Leisure Centre.
Adult lessons	Adhoc blocks of lessons during the year	<1	Due to limited water time we only programme Adult Lessons in during the Summer Holidays when swimming clubs are not using our facilities. If Haslingden pool were to close Marl Pits would be able to accommodate these lessons.
Spectators	N/A	321	There are spectator facilities at Marl Pits and likely to be spectator facilities as some other facilities. No mitigating actions required.
General Public Swim	33½ hours per week	Variable	There are alternative & equivalent public swimming sessions at Marl Pits and other pools within the valley as well as an

			<p>extensive small pool programme ideal for parents and their children.</p> <p>No mitigating actions required as alternative sessions are available at Marl Pits.</p>
GP referrals	n/a		<p>Currently, specific to the GP referral clients are the existing aqua fit lite and aquacise / aqua fit sessions (an approximate weekly head count of 30 and 34 respectively), these classes are not exclusively for GP referrals.</p>

Cross cutting factors

There are a number of factors that might impact / need to be taken into consideration for all current user groups and those with protected characteristics.

Transport / Travel

It is recognised that if option 2, 3 or 4 were to be pursued, transport/travel (and associated cost) issues to alternative locations/facilities could be a consideration.

Other facilities becoming busier / customer satisfaction

It is recognised that if the option 2 or 4 were to be pursued, a potential impact could be that the relocation of users to other locations, namely Marl Pits, could become much busier/full and have an impact on customer satisfaction / service provision to existing customers. However, it should be noted that this is not specifically related to impacting on a particular protected equality group.

Continues overleaf....

Appendix 4 Details of schools using Haslingden Pool

September - March						
Day	School	Arrive	In Pool	Out Pool	Depart	Phone No
Tuesday	Helmshore Primary	9.25	9.30	10.00	10.10	
	Helmshore Primary	9.55	10.00	10.30	10.40	
	Stonefold	10.45	10.50	11.20	11.30	
	St James' C of E	11.15	11.20	11.50	12.00	
LUNCH BREAK						
	Haslingden Primary	1.25	1.30	2.00	2.10	
	Haslingden Primary	1.55	2.00	2.30	2.40	
	St Veronica's	2.20	2.30	3.00	3.10	
Wednesday	Stubbins	1.10	1.15	1.45	1.55	
	Broadway Primary	1.40	1.45	2.15	2.25	
	Edenfield C of E	2.10	2.15	2.45	2.55	
Thursday	Linkway House		1.30	2.30		
Friday	Oswaldtwistle School		1.3	2.3		
6 Weeks only	St. Mary's					
	Belmont					

Other schools that use the pool for part of the year on an ad hoc basis include:

Haslingden High School
 Fearn Community Sports College
 Hollins School
 Alder Grange
 Tor View
 Belmont School

Appendix 5 Comparison of services currently available at each swimming pool facility within Rossendale

	Marl Pits Pool	Haslingden Pool	Whitworth Leisure Centre
Monday	7.00 am – 9.30 pm	7.00 am – 9.30 pm	7.30 am- 8.00 pm
Tuesday	12.00 pm – 9.00 pm	7.00 am – 9.00 pm	10.00 am -7.00 pm
Wednesday	7.00 am – 9.30 pm	9.00 am – 9.15 pm	9.00 am – 7.00 pm
Thursday	7.00 am – 9.00 pm	7.00 am – 9.30 pm	7.30 am – 8.00 pm
Friday	7.00 am – 9.00 pm	7.00 am – 9.00 pm	10.00 am – 8.00 pm
Saturday	8.00 am – 3.00 pm	9.00 am – 3.00 pm	9.00 am – 2.00 pm
Sunday	9.00 am – 3.00 pm	8.00 am – 12.30 pm	9.00 am – 2.00 pm

Session	Marl Pits Pool	Haslingden Pool	Whitworth Leisure Centre
Early Birds Swim	✓	✓	✓ (Wake Up Whitworth)
Ladies Only Swim	✓	✓	✓
Over 50's Swim	✓	✓	✓
Lunch Time Swim	✓	✓	✓
Pool Pilates	✓	✓	X
Public Swimming	✓	✓	✓
Bacup Swim Club	✓	x	X
Haslingden Swim Club	x	✓	X
Rawtenstall Swim Club	✓	X	X
Rays Swim Club	✓	x	x
Adult Lessons	✓	x	✓
Adult Only	✓	✓	✓
Aqua Aerobics	✓	✓	✓ (Aqua Fit)
Aqua Mobility	✓	X	X
Aqua Aerobic Lite	✓	✓	✓ (Aqua Fit)
Parent & Toddler	✓	✓	✓
Aqua Natal	✓	X	X
Lane Swimming	✓	✓	X
Fun/Kids Session	✓	✓	✓ (Kids Hour)
Family Fun	X (Fun Session)	X (Fun Session)	✓
Under 5's & Accompanying Adults in Small Pool	✓	x	x
Drop Off – Dip In	X	✓	X
Schools	✓	✓	✓
Pool Parties	✓	✓	✓
Health Suite	X	✓	✓
Junior Lessons	✓	✓	✓
Sub Aqua	x	✓	x

Appendix 6 Alternative pool facilities within Rossendale and neighbouring areas

The nearest alternative swimming pool facilities from Haslingden Swimming Pool are:

1. Marl Pits, Rawtenstall - 2.7 miles
2. Ramsbottom – 4.2 miles
3. Hyndburn Leisure Centre, Hyndburn – 5.7 miles
4. Shadsworth Leisure Centre, Blackburn – 7 miles
5. Mercer Hall Leisure Centre, Hyndburn - 7.8 miles
6. Padiham Leisure Centre, Burnley – 8.3 miles
7. Castle Leisure Centre Bury - 8.8 miles
8. Whitworth Leisure Centre (CLAW), Whitworth – 9.3 miles
9. St Peters Leisure Centre, Burnley - 9.3 miles

NB: this data is taken has been obtained from google maps (August 2012) web based journey planner and denotes the distance by car only.

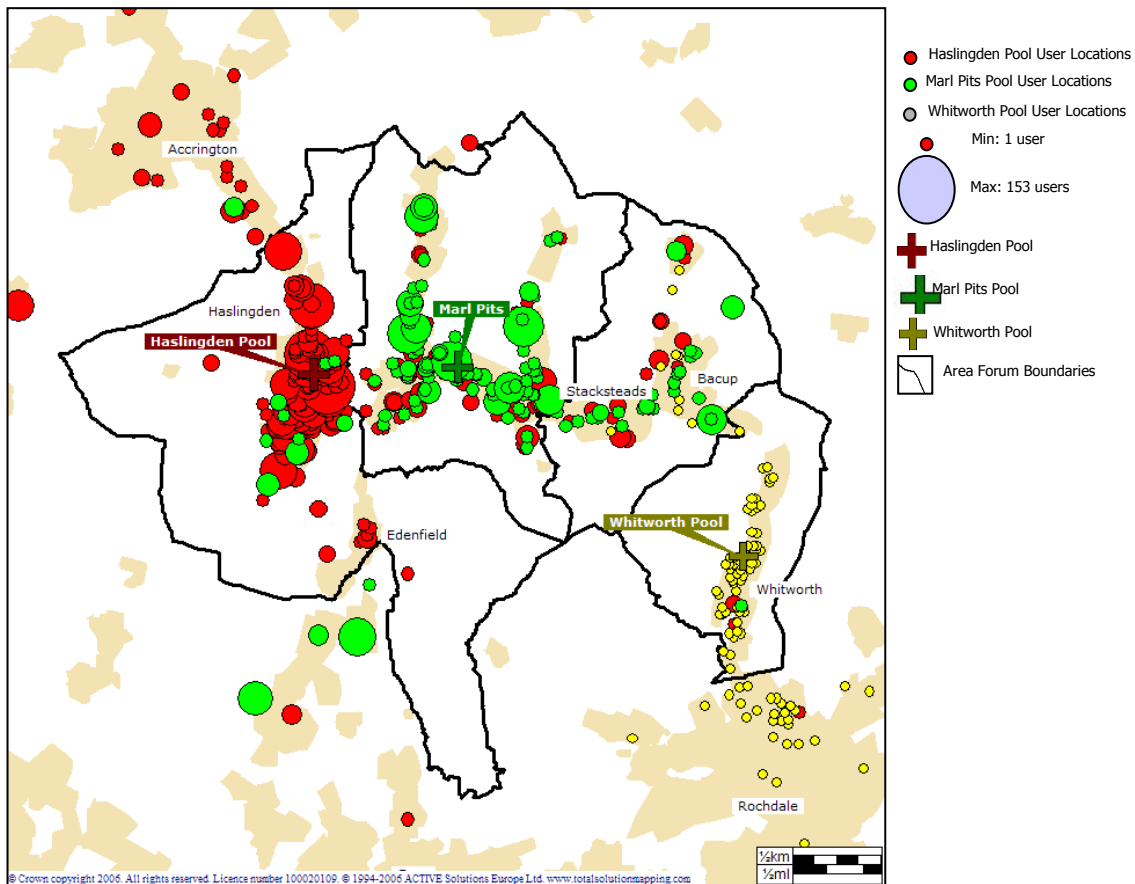
Appendix 7 Bus routes information to local facilities & location of swimming pool users

Bus route data and costs

To be developed as consultation progresses.

Location of swimming pool users

This shows that of those surveys, most people in Haslingden use Haslingden pool. However, there is some cross over with Marl Pits.



Source: PMP Consultancy presentation, showing the residential location of swimming pool users surveyed in spring 2006.

Appendix 8 Options for reduced costs: Changes to opening times for Option 2

Information as at 01.08.12. Provided by RLT

Possible changes to opening times and impacts of changes (table below):

A review of costs at Haslingden pool has been conducted by the Leisure Trust which has found that there is very little to be saved in terms of utilities and other costs by shorter opening hours. This is because it is more efficient to keep the pool warm, than it is to re-heat the pool after a period of closure. The only real savings from shorter opening hours come in the form of labour costs.

A session by session review of the pool has been conducted to establish which sessions could potentially be closed in order to reduce costs. We compared staff costs against average revenue per session and have highlighted the four sessions above as changes in opening times that would result in a saving.

The four sessions are as follows:

1. To close the pool completely on Sundays losing a public swimming session and an aqua-cise class. No specific equality groups identified. Users could be accommodated at Marl Pits.
1. Open the pool at mid day on Thursday rather than at 7am. This would lose some public swimming time and mean some school swimming would need to be rearranged. . As of December 2012 this movement would lose some public swimming time and ladies only and parent and toddler session.
2. Shorten the day on Friday by opening at 9am and closing at 8pm (rather than 7am and 9pm respectively.) This would lose 2 hours of public swimming and one adult only swimming session. No specific equality groups identified. As of December 2012 this movement would lose some public swimming time and ladies only and parent and toddler session.
3. Open the pool at 9am on a Tuesday rather than 7am. This would mean a loss of 2 hours of public swimming. No specific equality groups identified. Users could be accommodated at equivalent sessions at Marl Pits but at different times/days.

	Monday		Tuesday		Wednesday		Thursday		Friday		Saturday		Sunday				
	Open	Close	Open	Close	Open	Close	Open	Close	Open	Close	Open	Close	Open	Close	Staff Costs Saving	Estimate of Lost Revenue	Cost Benefit
Current Opening	7:00	21.30	7:00	21.00	9:00	21:00	7:00	21.30	7:00	21.00	9:00	3.00	8:00	12.30			
1. Closed Sunday	7:00	21.30	7:00	21.00	9:00	21:00	7:00	21.30	7:00	21.00	9:00	3.00	CLOSED		£9,228	£5,785	£3,443
2. Midday Opening Thursday	7:00	21.30	7:00	21.00	9:00	21:00	12:00	21.30	7:00	21.00	9:00	3.00	8:00	12.30	£5,332	£2,049	£3,283
3. Shorter Opening Friday	7:00	21.30	7:00	21.00	9:00	21:00	7:00	21.30	9:00	20:00	9:00	3.00	8:00	12.30	£3,637	£1,653	£1,984
4. 9am Tuesday Opening	7:00	21.30	9:00	21.00	9:00	21:00	7:00	21.30	7:00	21.00	9:00	3.00	8:00	12.30	£2,017	£1,140	£887
Combination (1- 4)	7:00	21.30	9:00	21.00	9:00	21:00	12:00	21.30	9:00	20.00	9:00	3.00	CLOSED		£20,214	£10,627	£9,587

Appendix 9 Local ethnicity data

Currently no equality monitoring is undertaken by RLT of its customer at Haslingden Swimming Pool in order to determine any significant impact on ethnicity as a protected equality group. At the time of writing Census 2011 data on ethnicity has not been published. Therefore the only information available to us is Lancashire Profile data sources from Office of National Statistics Neighbourhood Statistics data.

Rosendale:

Percentage of total number of people in ethnic group 2009:

Ethnic Group Category	% of population	Notes
White (inclu.Irish)	92.9	
Mixed	0.6	BME estimated population based on the figures in this table is approximately 6.9%.
Asian or Asian British	5.3	
Black or Black British	0.5	
Chinese or other	0.5	

Based on a population of 67,100

Source: <http://www.lancashire.gov.uk/corporate/web/?siteid=6120&pageid=35461&e=e>

Wards in/around Haslingden area

Wards in Haslingen area & population	Eden (Pop:3,543)	Greenfield (Pop: 5,460)	Helmshore (Pop: 5,726)	Worsley (Pop: 5,667)
Ethnic Group Category %				
White (inclu. Irish)	98.93 (3505 people)	91.56 (4999 people)	98.29 (5625 people)	88.03 (4989 people)
Mixed	0.59 (24 people)	0.68 (35 people)	0.57 (33 people)	0.46 (26 people)
Asian or Asian British	0.28 (10 people)	6.99 (382 people)	0.83 (48 people)	11.15 (632 people)
Black or Black British	0.11 (4 people)	0.15 (9 people)	0.05 (3 people)	0.05 (3 people)
Chinese or other	0.08 (3 people)	0.58 (32 people)	0.3 (17 people)	0.3 (17 people)
Estimated BME population total	1.06 (41 people)	8.4 (458 people)	1.75 (101 people)	11.96 (678 people)

Source: ONS, November 2004

<http://www.neighbourhood.statistics.gov.uk/dissemination/LeadTableView.do?a=7&b=6267785&c=Worsley&d=14&e=15&g=463901&i=1001x1003x1004&m=0&r=1&s=1344001905713&enc=1&dsFamilyId=47>

<http://www.neighbourhood.statistics.gov.uk/dissemination/LeadTableView.do?a=7&b=6267780&c=helms>

<http://www.neighbourhood.statistics.gov.uk/dissemination/LeadTableView.do?a=7&b=6267776&c=greenfi>

<http://www.neighbourhood.statistics.gov.uk/dissemination/LeadTableView.do?a=7&b=6267773&c=eden&d=14&e=15&g=463713&i=1001x1003x1004&m=0&r=1&s=1344004692406&enc=1&dsFamilyId=47>