

07 DEC 2012
2012/580

BACUP AND RAWTENSTALL GRAMMAR SCHOOL - 2 STOREY CLASSROOM BLOCK EXTENSION
SITE LOCATION PLAN - SCALE 1.2500 @ A3

BRAMLEY - PATE + PARTNERS
 Chartered Architects - Telephone (01772) 335357

BACUP AND RAWTENSTALL GRAMMAR SCHOOL	29/11/2012
2-STOREY CLASSROOM BLOCK EXTENSION	Job No. 4194
SITE LOCATION PLAN	SK/32/1



**PROPOSED NEW 2-STOREY CLASSROOM BLOCK
BACUP AND RAWTENSTALL GRAMMAR SCHOOL**

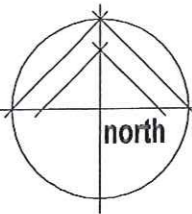


2012/580
07 DEC 2021

BRAMLEY - PATE + PARTNERS
Chartered Architects

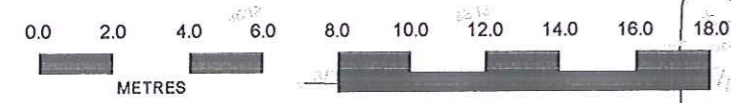
3D VISUALS

REVISIONS



07 DEC 2012

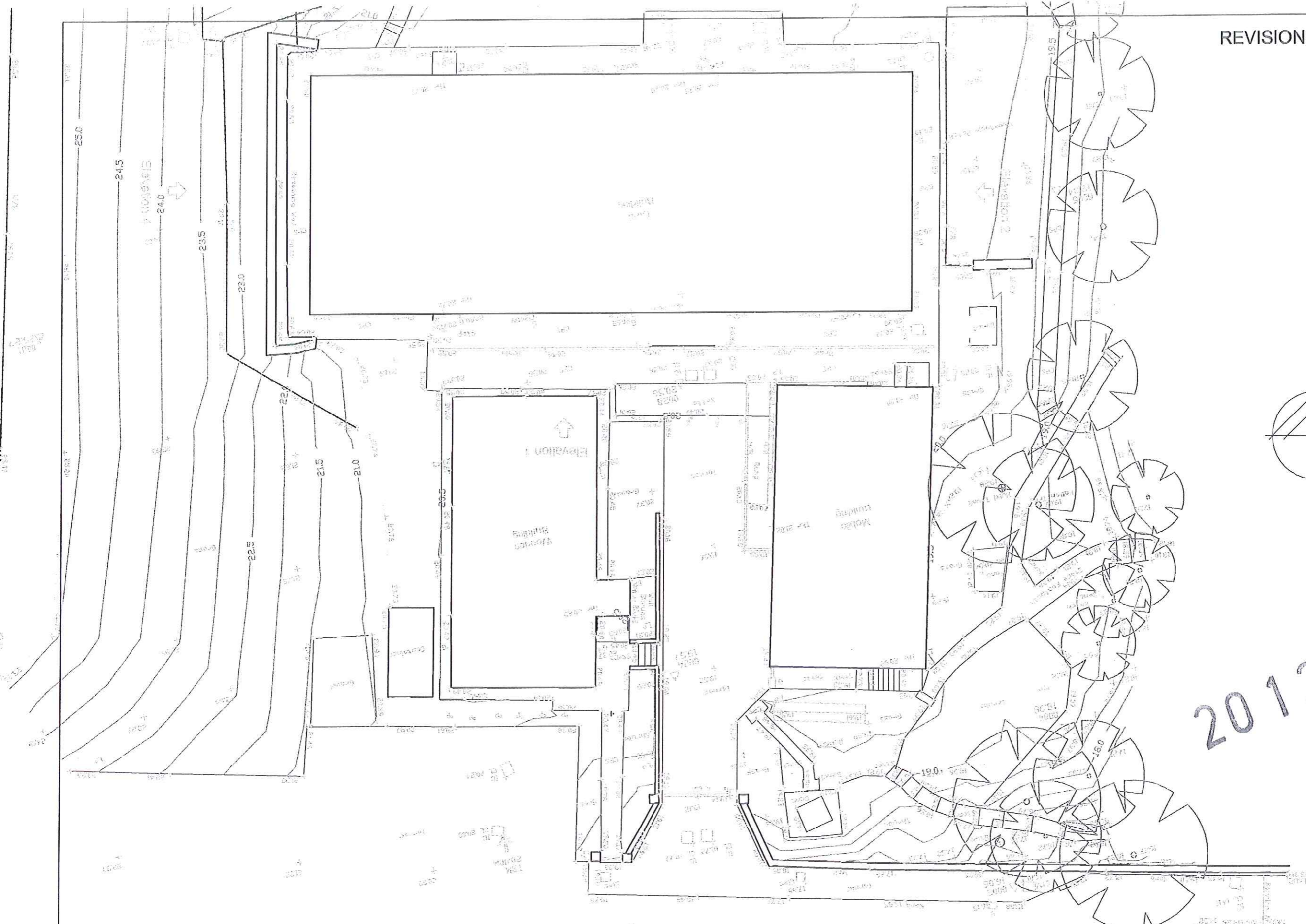
2012/580



BACUP AND RAWTENSTALL GRAMMAR SCHOOL - 2 STOREY CLASSROOM BLOCK EXTENSION
SITE LAYOUT PLAN AS EXISTING - SCALE 1.200 @ A3

BRAMLEY - PATE + PARTNERS
Chartered Architects - Telephone (01772) 335357

BACUP AND RAWTENSTALL GRAMMAR SCHOOL	29/11/2012
2-STOREY CLASSROOM BLOCK EXTENSION	Job No. 4194
SITE LAYOUT AS EXISTING	SK/32/2





FRONT ELEVATION AS EXISTING (N)



SIDE ELEVATION AS EXISTING (W)

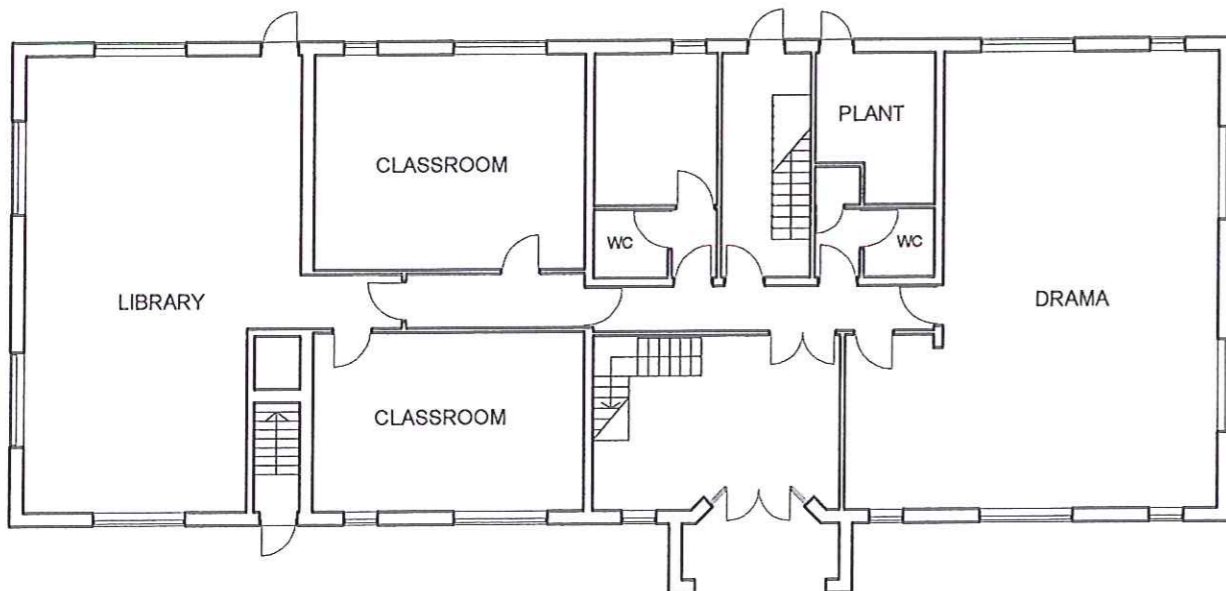


REAR ELEVATION AS EXISTING (S)

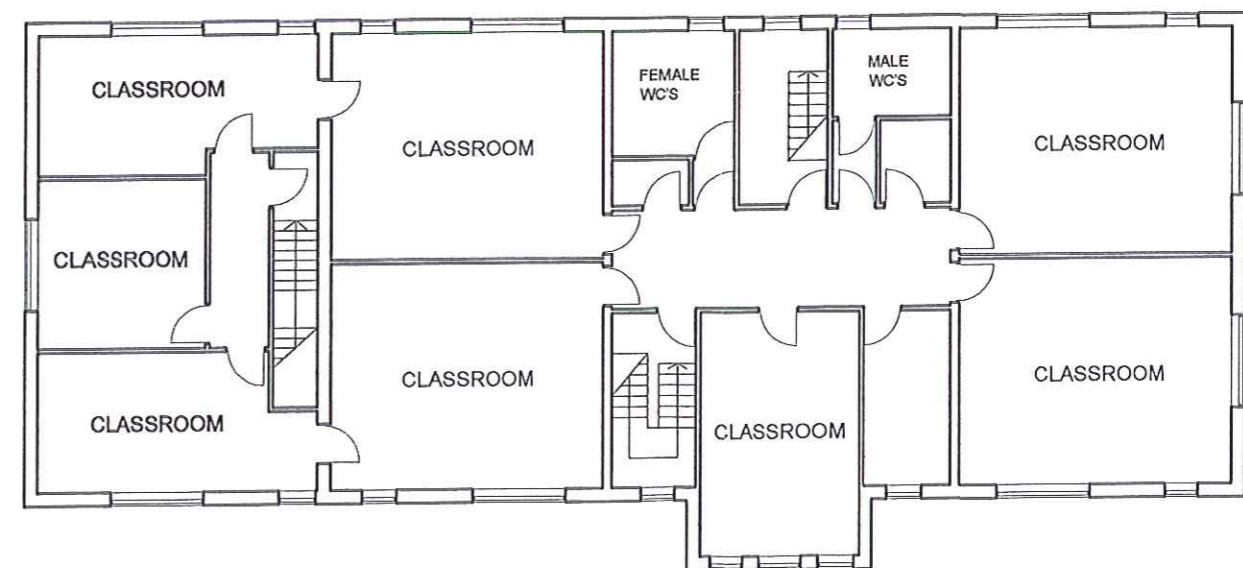


SIDE ELEVATION AS EXISTING (E)

2012/580
07 DEC 2012



GROUND FLOOR PLAN AS EXISTING
SCALE 1.200



FIRST FLOOR PLAN AS EXISTING
SCALE 1.200

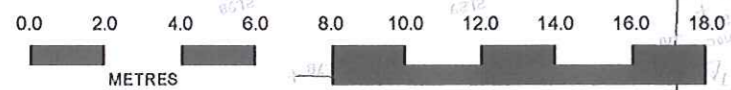
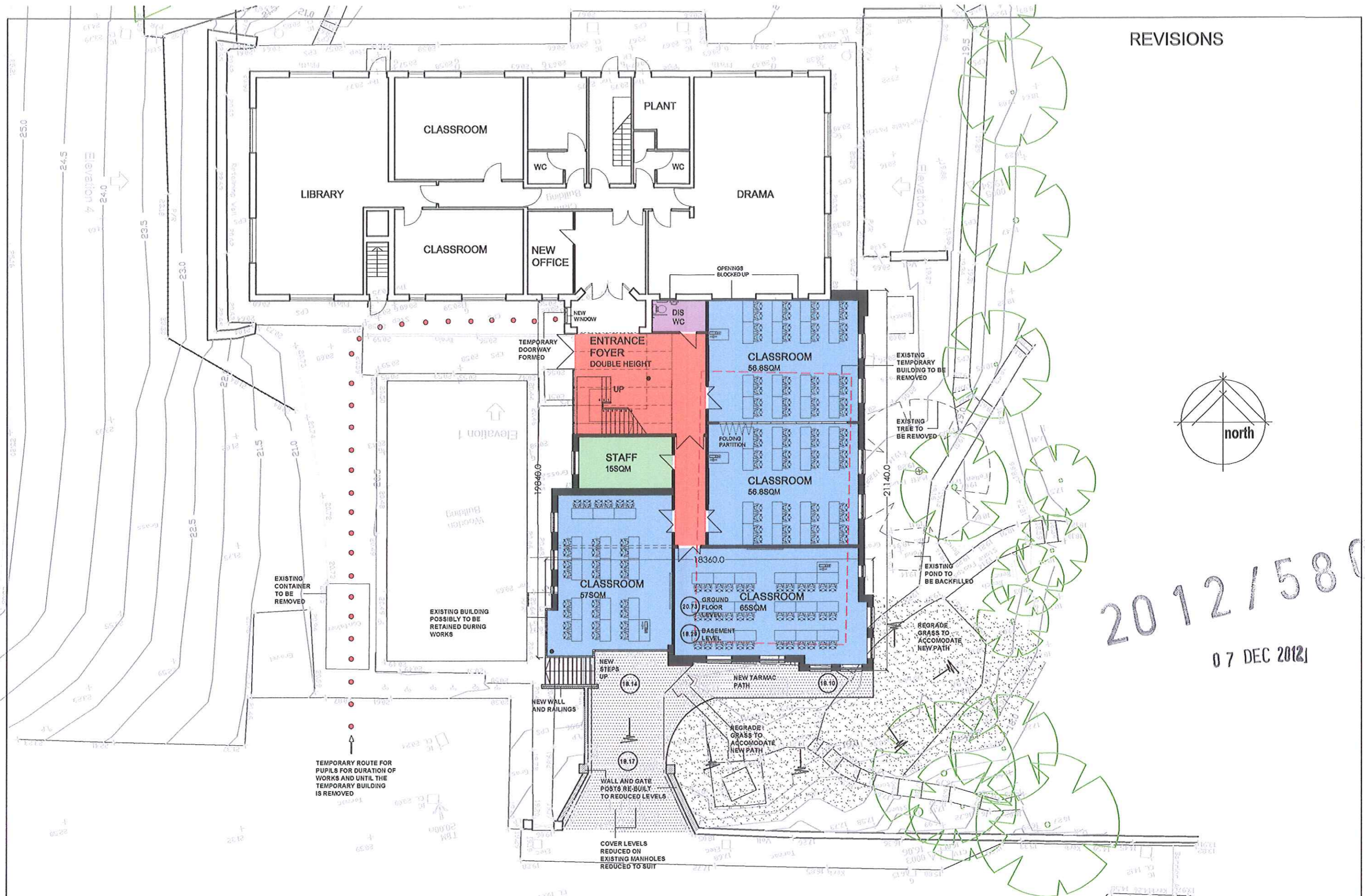
BRAMLEY - PATE + PARTNERS
Chartered Architects - Telephone (01772) 335357

BACUP AND RAWTENSTALL GRAMMAR SCHOOL - CLARK BUILDING

PLANS AND ELEVATIONS AS EXISTING - SCALE 1.200 @ A3

BACUP AND RAWTENSTALL GRAMMAR SCHOOL	29/11/2012
2-STORY CLASSROOM BLOCK EXTENSION PLANS & ELEVATIONS AS EXISTING	Job No. 4194
	SK/00/1

REVISIONS

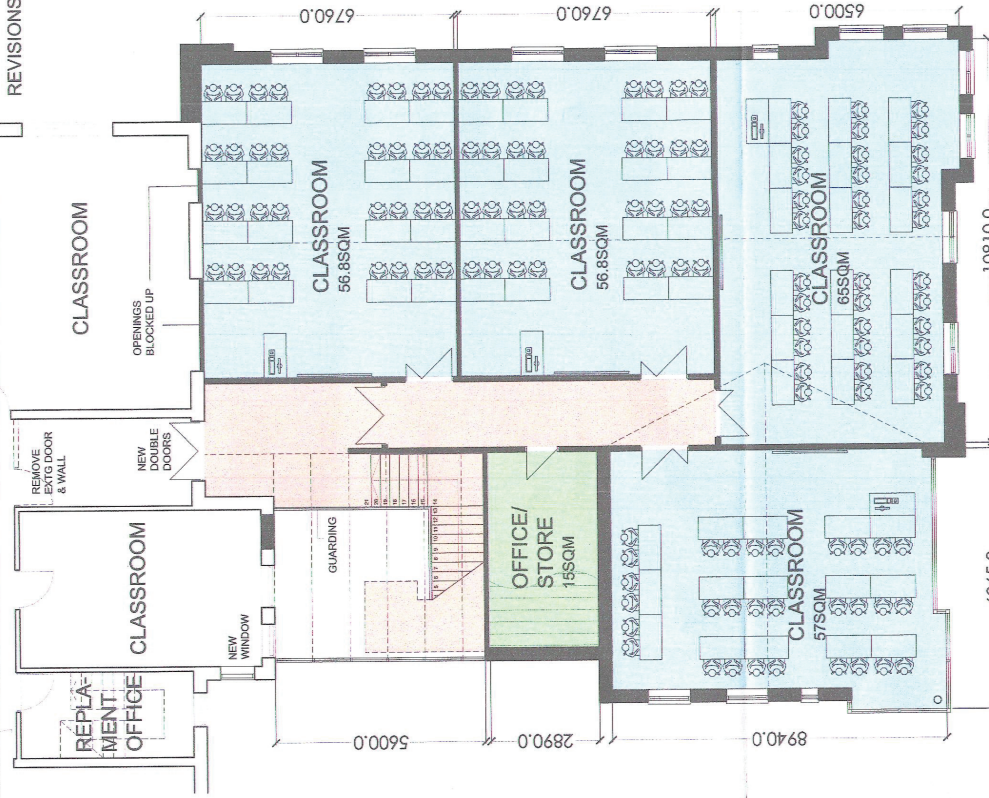


BACUP AND RAWTENSTALL GRAMMAR SCHOOL - 2 STOREY CLASSROOM BLOCK EXTENSION
SITE LAYOUT PLAN AS PROPOSED - SCALE 1.200 @ A3

BRAMLEY - PATE + PARTNERS
 Chartered Architects - Telephone (01772) 335357

BACUP AND RAWTENSTALL GRAMMAR SCHOOL	29/11/2012
2-STOREY CLASSROOM BLOCK EXTENSION SITE LAYOUT AS PROPOSED	Job No. 4194
	SK/32/3

REVISIONS



FIRST FLOOR PLAN AS PROPOSED
SCALE 1:200

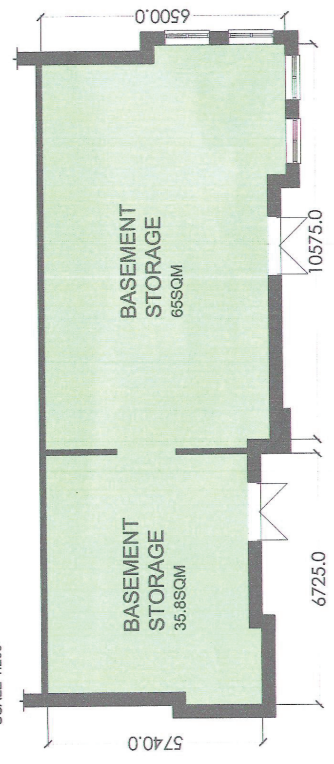
ACCOMMODATION SCHEDULE

472SQM	CLASSROOMS
1311SQM	OFFICE/STORES
5.2SQM	DIS WC
95.4SQM	CIRCULATION
12SQM	NEW OFFICE IN CLARK BUILDING

2012/580
07 DEC 2012



GROUND FLOOR PLAN AS PROPOSED
SCALE 1:200



LOWER GROUND FLOOR PLAN AS PROPOSED
SCALE 1:200



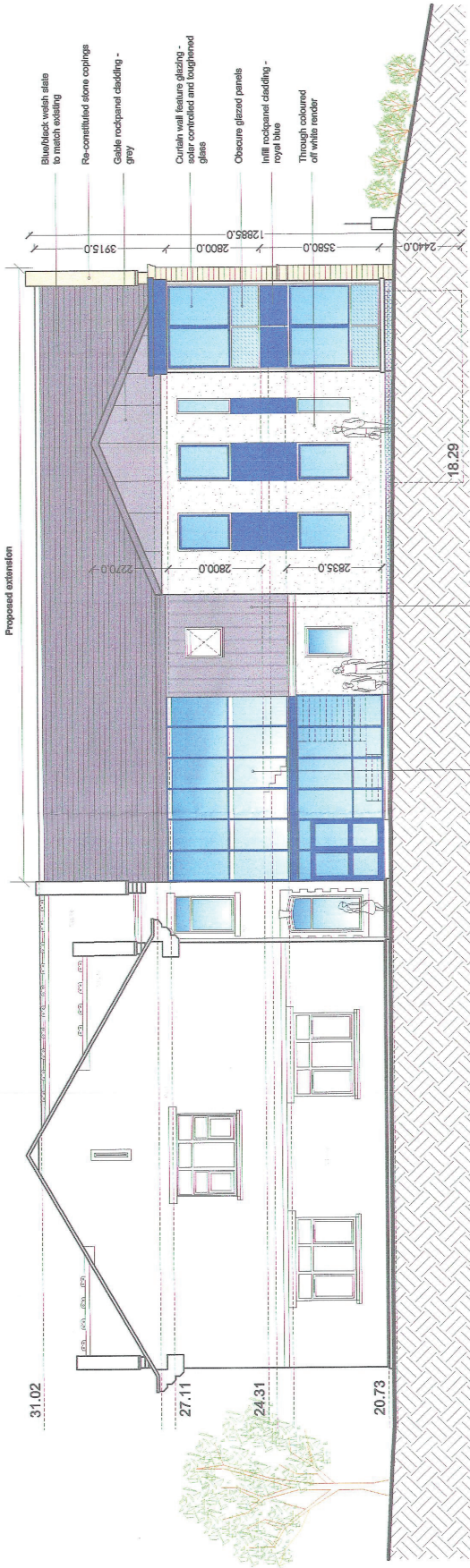
WEST ELEVATION AS PROPOSED
SCALE 1:200



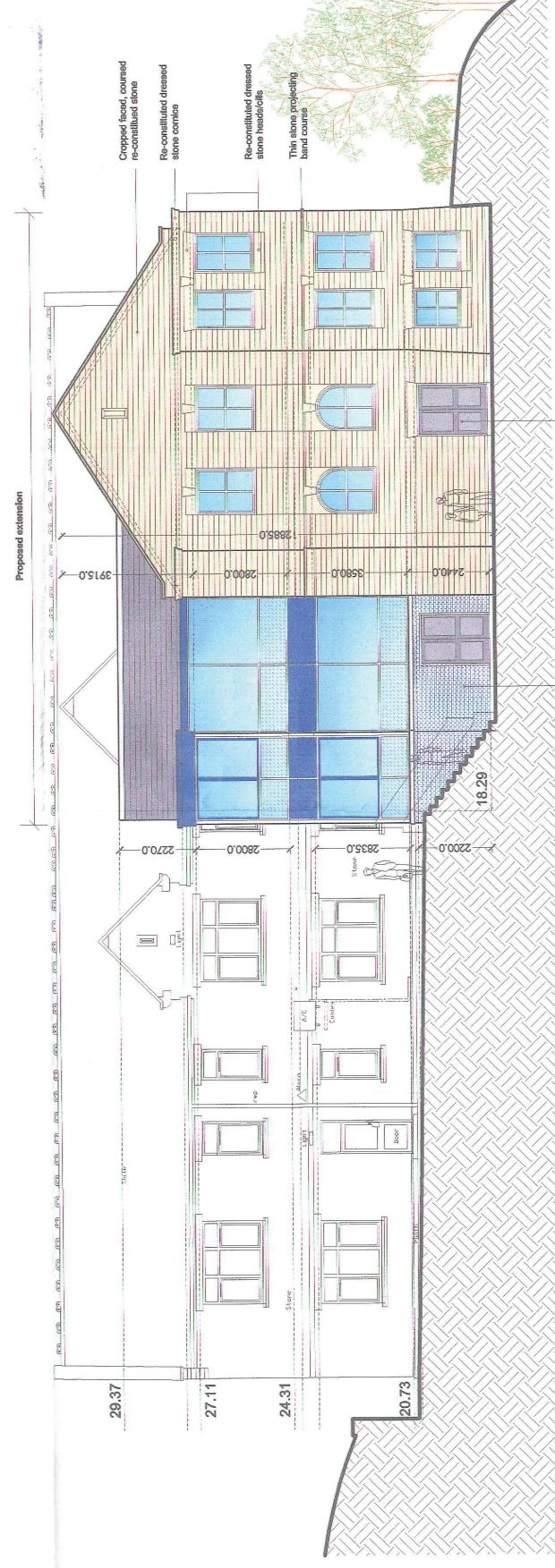
SOUTH ELEVATION AS PROPOSED
SCALE 1:200

07 DEC 2012
2012/590

BRAMLEY - PATE + PARTNERS	
Chartered Architects - Telephone (01773) 335357	
BACUP AND RAWTENSTALL	20/1/2012
GRAMMAR SCHOOL	Job No. 4194
2 STOREY CLASSROOM BLOCK EXTENSION	ELEVATIONS AS PROPOSED
	SK03



EAST ELEVATION AS PROPOSED
SCALE 1:200

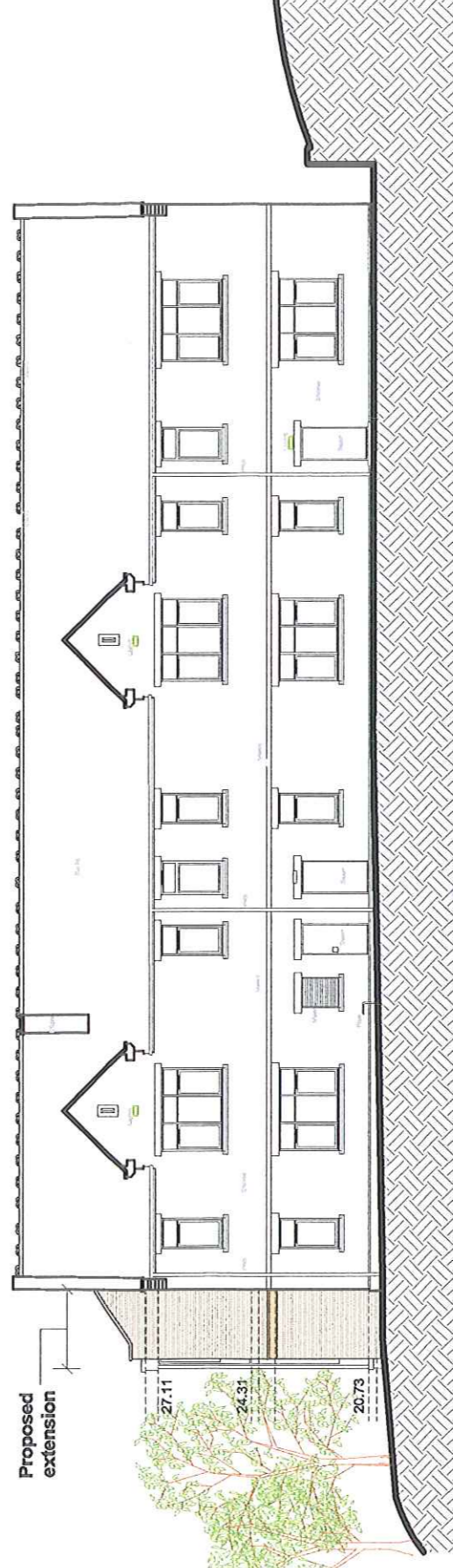
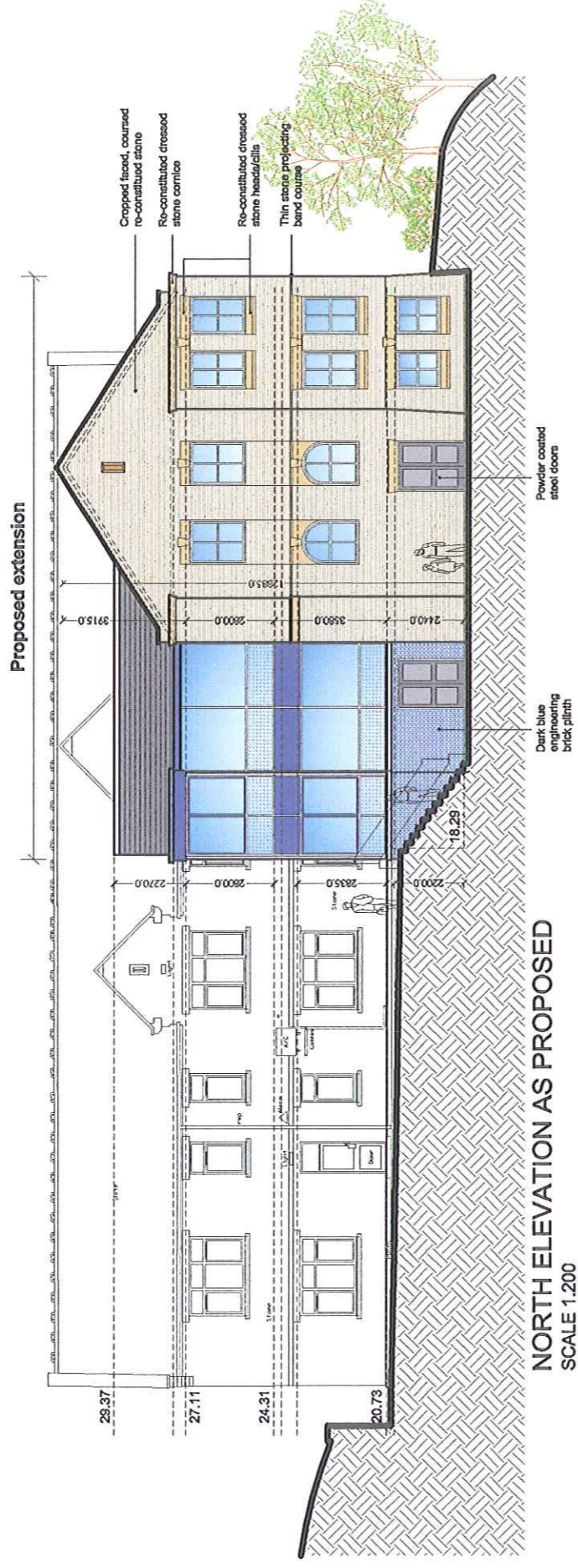
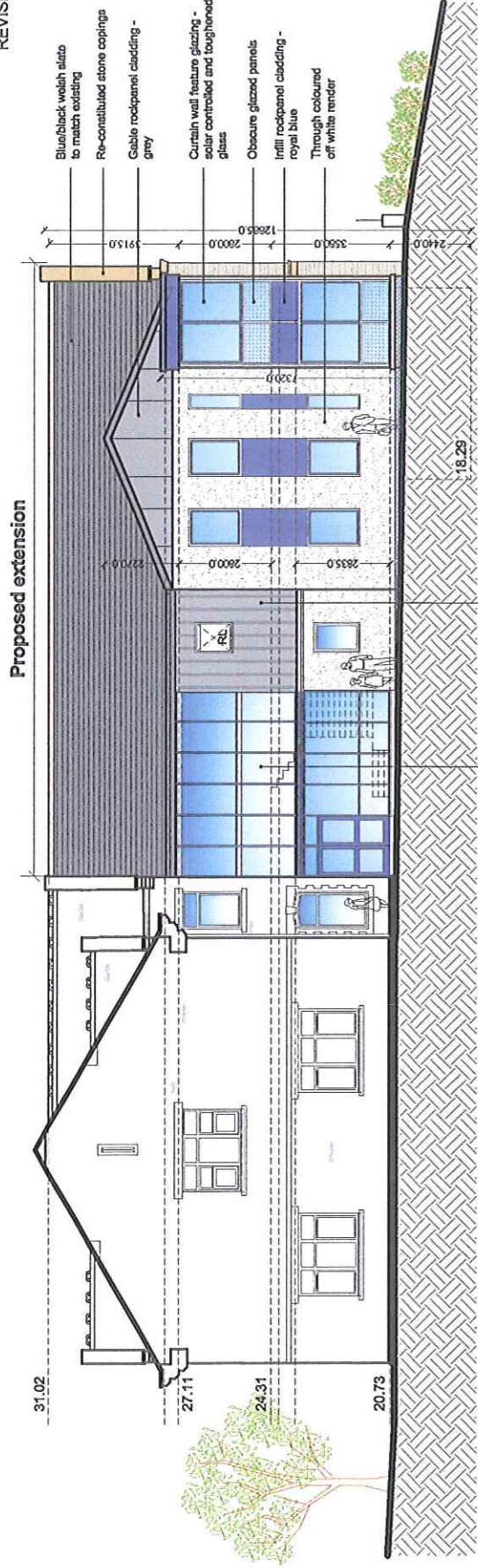


NORTH ELEVATION AS PROPOSED
SCALE 1:200

07 DEC 2012
2012/580

BRAMLEY - PATE + PARTNERS
Chartered Architects - Telephone (01772) 335357
28112012
Job No. 4194
BACUP AND RAWTENSTALL
GRAMMAR SCHOOL
2 STOREY CLASSROOM BLOCK EXTENSION
ELEVATIONS AS PROPOSED
51002

REVISIONS



BACUP AND RAWTENSTALL GRAMMAR SCHOOL - 2 STOREY CLASSROOM BLOCK EXTENSION ELEVATIONS AS PROPOSED

2012/580

ELEVATIONS AS PROPOSED - SCALE 1:200 @ A3 U / DEC 2012

BRAMLEY - PATE + PARTNERS
Chartered Architects - Telephone (01772) 335357

BACUP AND RAWTENSTALL GRAMMAR SCHOOL	29/11/2012
2-STORY CLASSROOM BLOCK EXTENSION ELEVATIONS AS PROPOSED	Job No. 4194
	SK/0/4



2012/580

07 DEC 2012

PROPOSED NEW 2-STOREY CLASSROOM BLOCK
BACUP AND RAWTENSTALL GRAMMAR SCHOOL

BRAMLEY - PATE + PARTNERS
Chartered Architects

PHOTO MONTAGES



**PROPOSED NEW 2-STOREY CLASSROOM BLOCK
BACUP AND RAWTENSTALL GRAMMAR SCHOOL**



2012/580
07 DEC 2021

BRAMLEY - PATE + PARTNERS
Chartered Architects

3D VISUALS