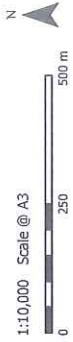




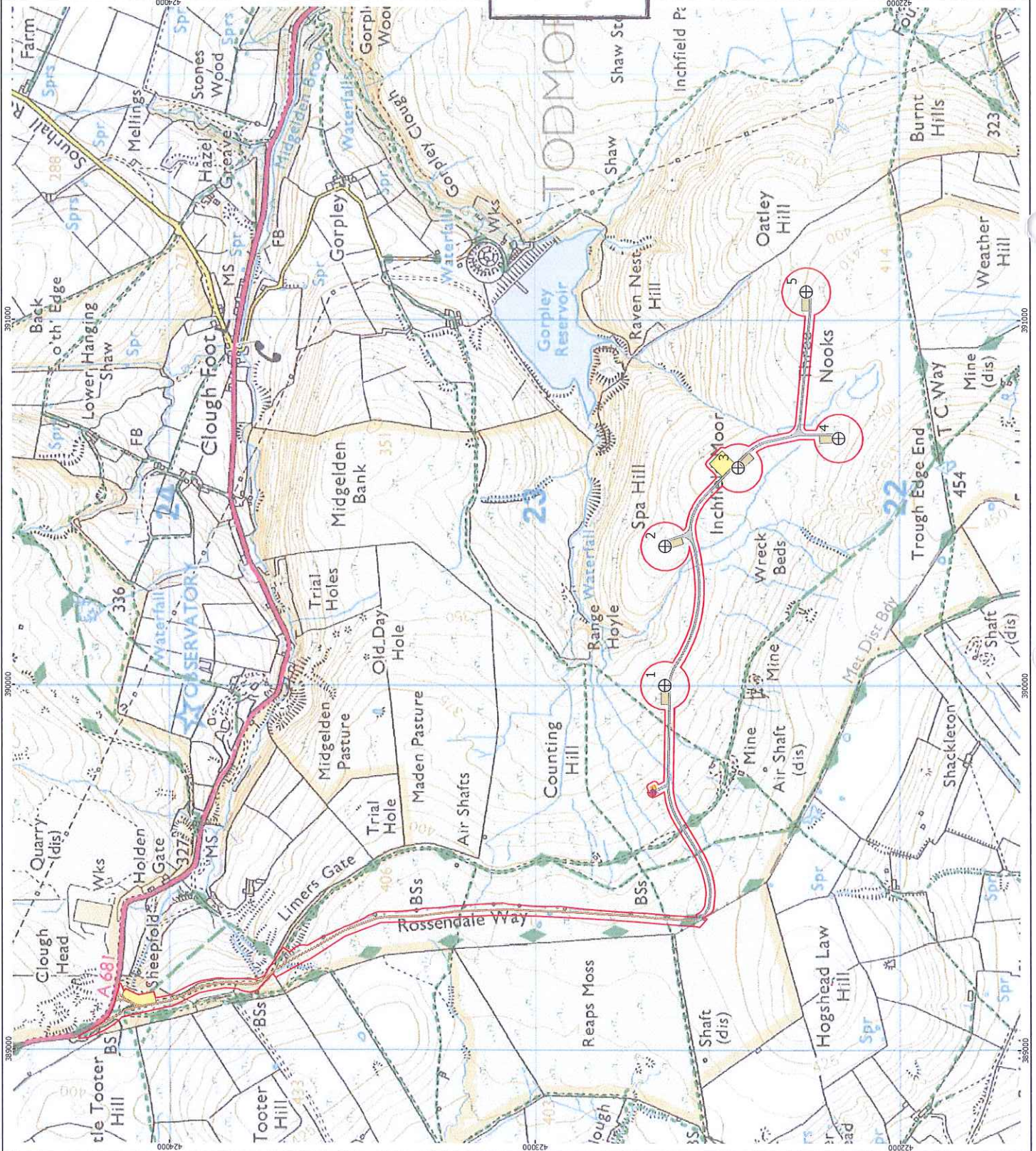
- ⊕ Proposed Turbine Location
- ▭ Planning Application Boundary
- ◆ Permanent Meteorological Mast
- ▭ New Access Track
- ▭ Existing Access Track
- ▭ Crane Hardstanding
- ▭ Switchgear/Control Building
- ▭ Temporary Construction Compound

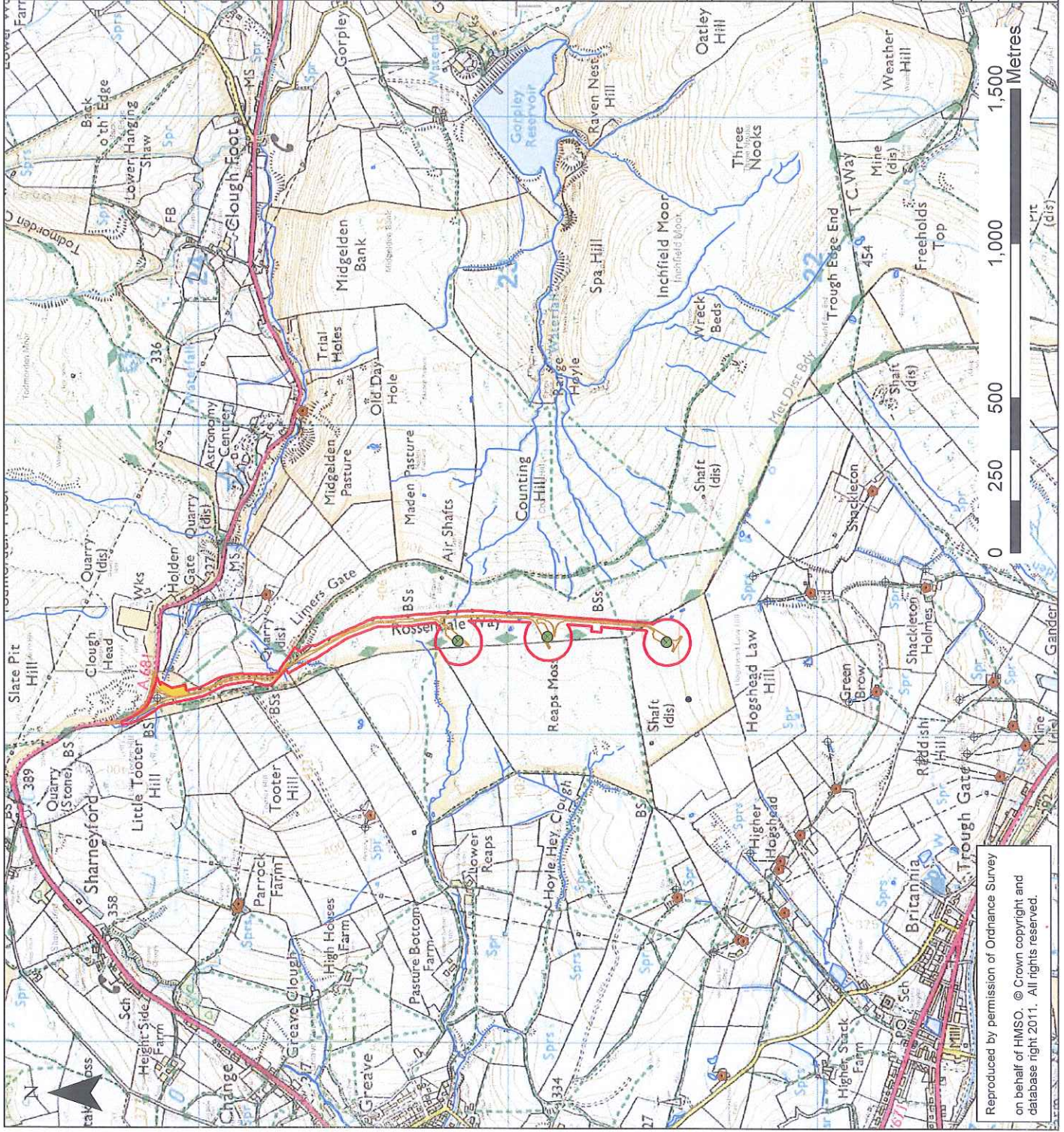
**2012/526 - Proposed
Gorpley Reservoir
Wind Farm Layout**



Produced: CRD
Reviewed: SC
Approved: ANM
Ref: 702/ES/002
Date: 26/10/2012
Revision: A

Site Layout
Figure 1.2
Gorpley Wind Farm
Environmental Statement





Key

- Wind Monitoring Mast
- ◻ PWS - Property
- ◻ PWS - Source
- Turbine location
- ◻ Planning Boundary
- ◻ Temporary Construction Compound
- Access Track
- Water Features
- PWS - Route

2012/165 - Approved

Reaps Moss

Wind Farm Layout

Scale (at A3): 1:12,500 Date: January 2012

Prepared by: **SKM ENVIROS**



On behalf of: solar wind hydro biomass

Reaps Moss Wind Farm

Figure 6-1: Site Layout, Topography and Water Features

Drawn by: CD Checked by: MB Version: V1

Every effort has been made to ensure the accuracy of the information provided on this figure. Dulax Ltd cannot be held responsible for any omissions or errors in the data supplied by third parties and hereby expressly disclaims any responsibility for any losses, disappointment, negligence or damage caused by reliance on the information contained on this figure.

Reproduced by permission of Ordnance Survey on behalf of HMSO. © Crown copyright and database right 2011. All rights reserved.