

Revision:	Date:	Drawn:	Checked:
-----------	-------	--------	----------

PLANNING ISSUE

Project:
 New Build Residential Development
 Kearns Mill
 Cowpe Road, Waterfoot

Client: Skipton Properties

Location Plan

Job No:	Drawing No:	Revision:
3901-005	PL02	

Date: 19/02/2013 Scale: 1:1250@A3 Drawn: TES Checked: RPM
 CAD Ref: P:\3901-005\CAD\

Note: Do not scale from this drawing. All dimensions to be checked on-site.

Watson Batty Architects Limited
 Shires House, Shires Road
 Guiseley, Leeds LS20 8EU
 T: 01943 876 665
 F: 01943 882 300
 E: enquiries@watsonbatty.com
 W: www.watsonbatty.com





SCHEDULE OF ACCOMMODATION

HOUSE TYPE	FLOOR AREA
2No - THE ERMSTEAD - TYPE A - 4BED 2 STOREY DETACHED	1329.3 SQ.FT.
1No - THE WHITTAKER - TYPE B - 4BED 2 STOREY DETACHED	1612.5 SQ.FT.
9No - THE IRWELL - TYPE C - 4BED 3 STOREY SPLIT LEVEL	1786.7 SQ.FT.
3No - THE COWPE - TYPE D - 4BED 3 STOREY SPLIT LEVEL	1998.0 SQ.FT.
2No - THE RAWSTORNE - TYPE E - 4BED 3 STOREY SPLIT LEVEL	2027.0 SQ.FT.
1No - THE JACKSON - TYPE F - 5BED 3 STOREY SPLIT LEVEL	2262.0 SQ.FT.
1No - THE COACH HOUSE ONE - TYPE G - 5BED 2 STOREY DETACHED	2230.2 SQ.FT.
1No - THE COACH HOUSE TWO - TYPE H - 5BED 2 STOREY DETACHED	2391.7 SQ.FT.
1No - THE GATE HOUSE - TYPE J - 3BED 2 STOREY END TERRACE	1564.0 SQ.FT.
1No - THE DAVITT - TYPE K - 4BED 2 STOREY DETACHED	1599.0 SQ.FT.

SCHEME TOTAL = 22 UNITS

SITE AREA

1.73 HECTARES

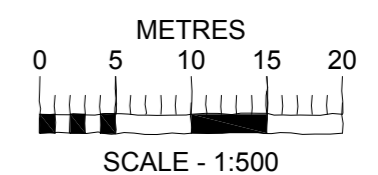
PARKING

43 - PRIVATE PARKING SPACES
37 - GARAGE SPACES

EXTERNALS SCHEDULE

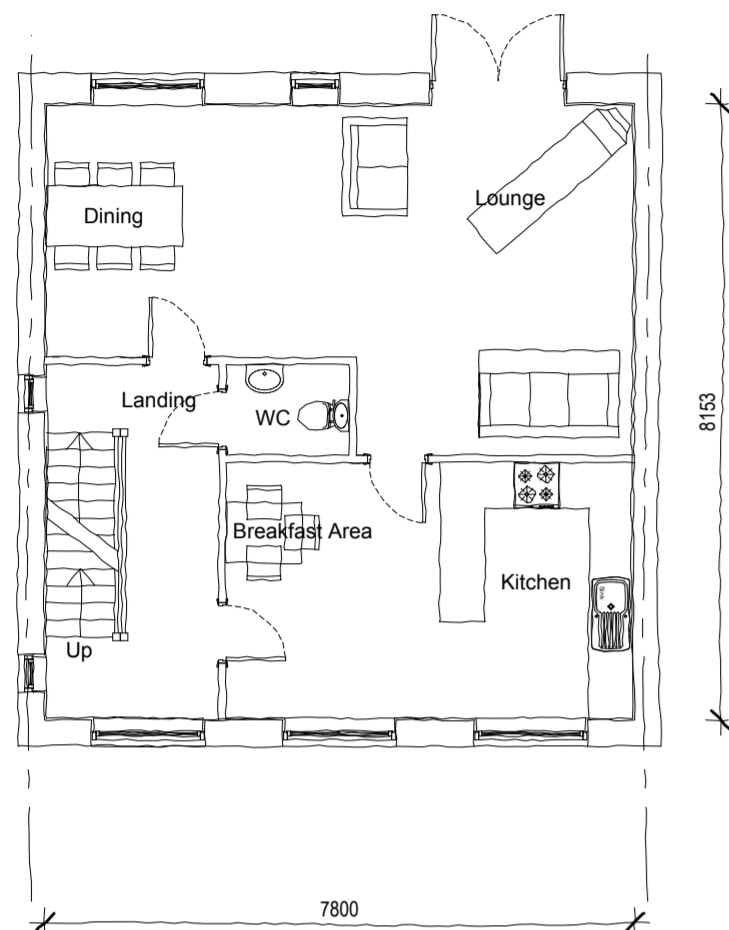
- 1.8M HIGH TIMBER HIT & MISS FENCE
- 1.5M HIGH TIMBER HIT & MISS FENCE
- REFUSE BINS
- RETAINING WALLS

FOR FURTHER INFO REGARDING TO SOFT LANDSCAPING & BOUNDARY TREATMENTS PLEASE REFER TO PEGASUS LANDSCAPE DESIGN PLAN (DRAWING BIR.4119_01B)

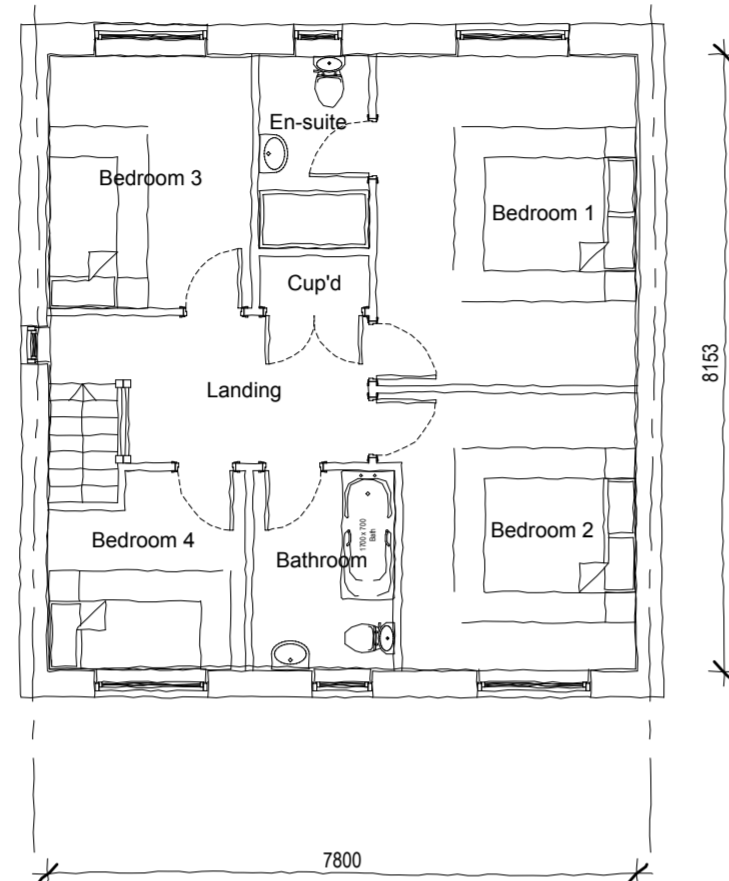


PLANNING ISSUE

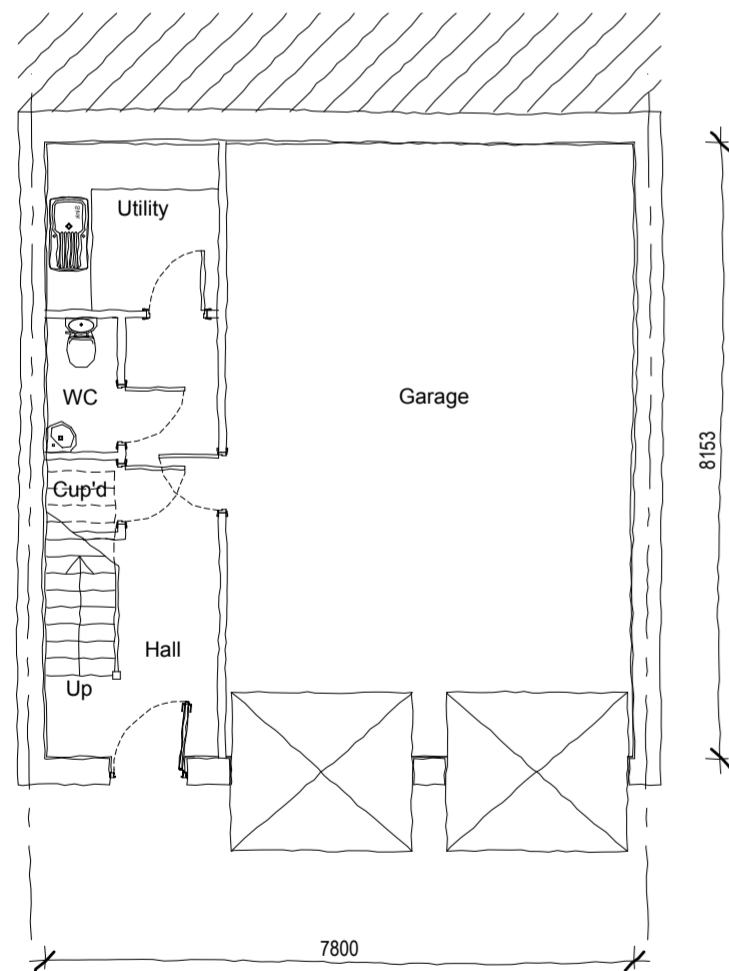
Project: New Build Residential Development Kearns Mill Cowpe Road, Waterfoot		
Client: Skipton Properties		
Proposed Site Plan		
Job No: 3901-005	Drawing No: PL03	Revision:
Date: 09/05/2012 Scale: 1:500@A2 Drawn: VW Checked: TES CAD Ref: P:3901-005(CAD)		
Note: Do not scale from this drawing. All dimensions to be checked on-site.		
Watson Batty Architects Limited Shires House, Shires Road Guiseley, Leeds LS20 8EU		<p>WATSON BATTY architects</p>
T: 01943 876 665 F: 01943 882 300 E: enquiries@watsonbatty.com W: www.watsonbatty.com		



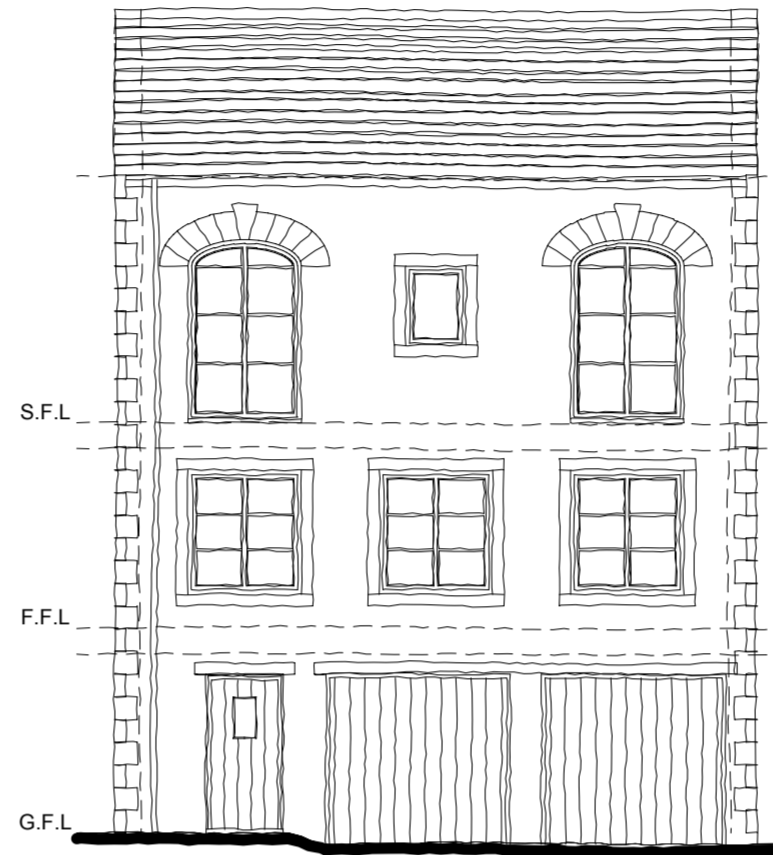
GROUND FLOOR PLAN
TYPE C - THE IRWELL
FLOOR AREA = 695.3 SQ.FT



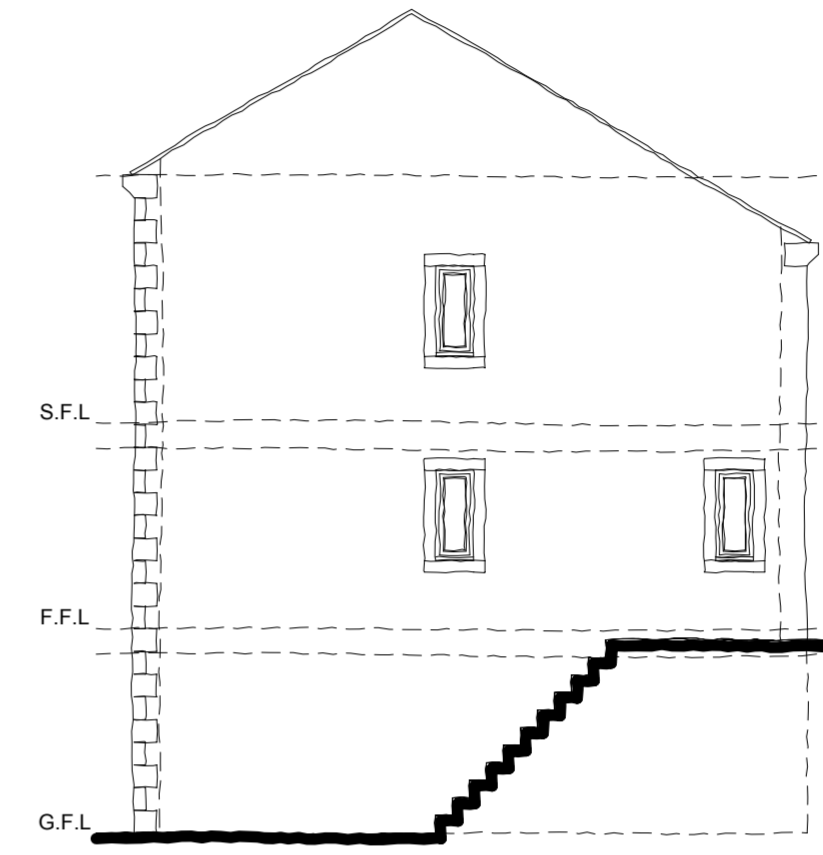
FIRST FLOOR FLOOR PLAN
TYPE C - THE IRWELL
FLOOR AREA = 695.3 SQ.FT



LOWER GROUND FLOOR PLAN
TYPE C - THE IRWELL
FLOOR AREA = 396.1 SQ.FT



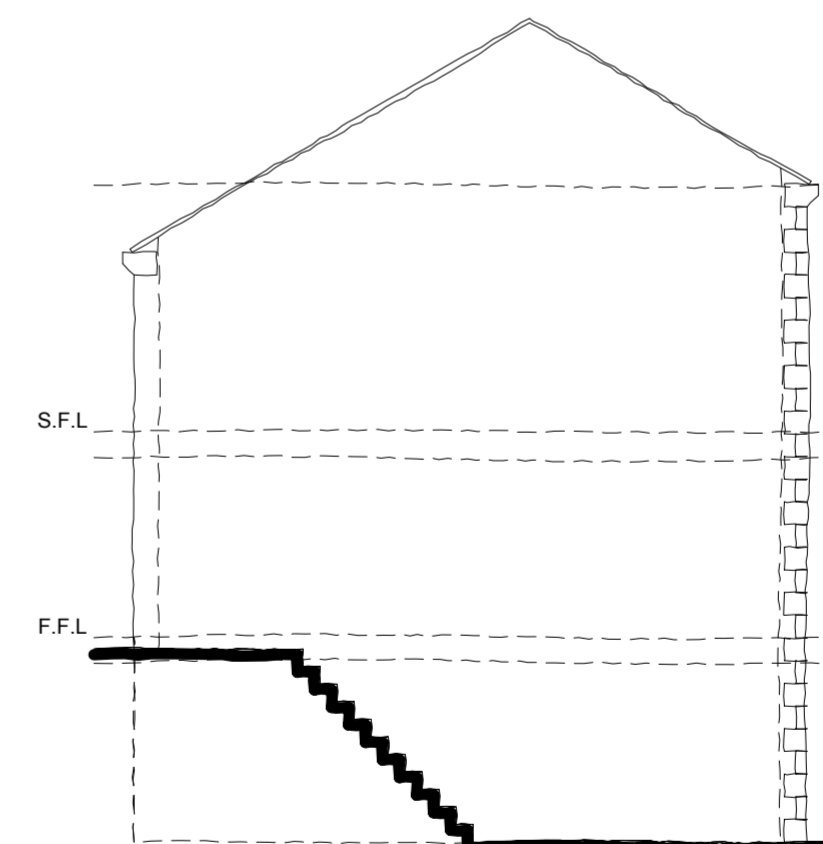
FRONT ELEVATION
HOUSE TYPE C - THE IRWELL
AS



SIDE ELEVATION
HOUSE TYPE C - THE IRWELL
AS



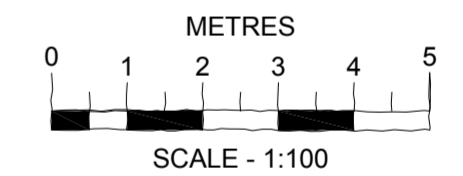
REAR ELEVATION
HOUSE TYPE C - THE IRWELL
AS



SIDE ELEVATION
HOUSE TYPE C - THE IRWELL
AS

EXTERNAL MATERIALS

EXTERNAL FACING MATERIAL - NATURAL STONE
ROOF - ARTIFICIAL STONE SLATE TILE.
WINDOWS - DARK GREY UPVC.
HEADS, CILLS & MULLIONS - CAST STONE
DOORS - BLACK UPVC & DARK GREY FRAMES.
SOFFITS AND FASCIAS - BLACK UPVC.
RAINWATER GOODS - BLACK UPVC.



PLANNING ISSUE

Project:
New Build Residential Development
Kearns Mill
Cowpe Road, Waterfoot

Client: Skipton Properties

Proposed House Type C - The Irwell - 4Bed Split level
Option 1
Total Floor Area = 1786.7 SQ.FT (Excluding Garage Area)

Job No:	Drawing No:	Revision:
3901-005	PL12	

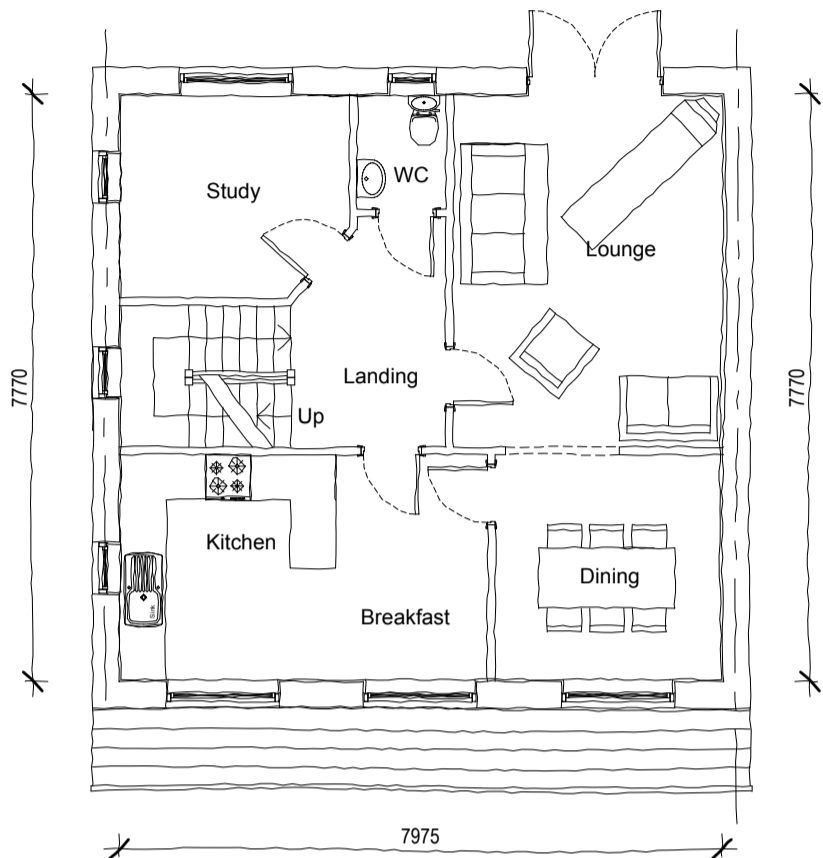
Date: 27/04/2012 Scale: 1:100 @ A2 Drawn: TES Checked: RPM
CAD Ref:

Note: Do not scale from this drawing. All dimensions to be checked on-site.

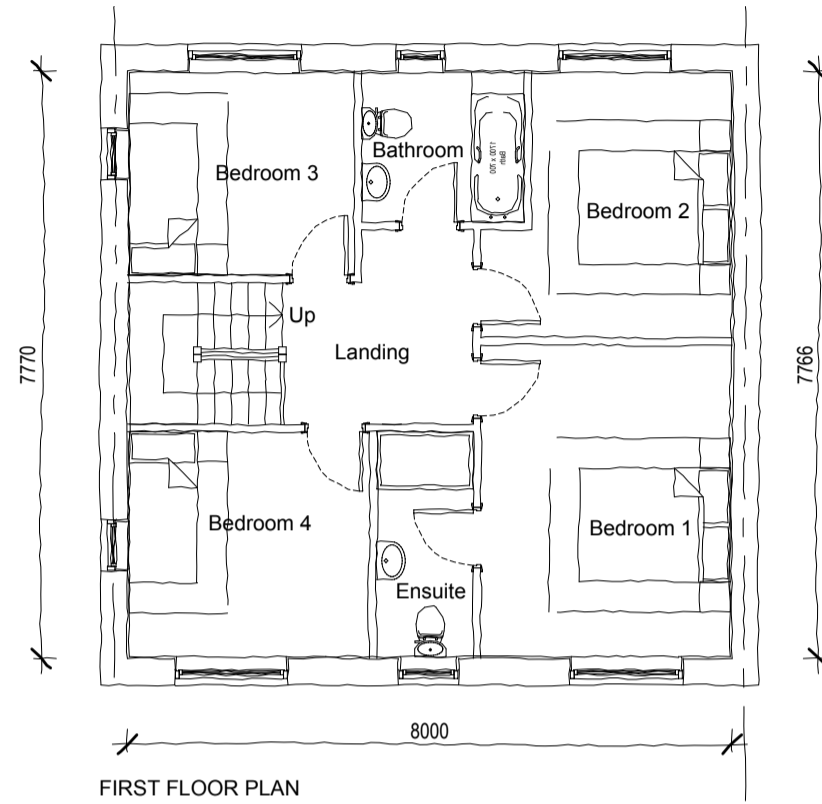
Watson Batty Architects Limited
Shires House, Shires Road
Guiseley, Leeds LS20 8EU
T: 01943 876 665
F: 01943 882 300
E: enquiries@watsonbatty.com
W: www.watsonbatty.com



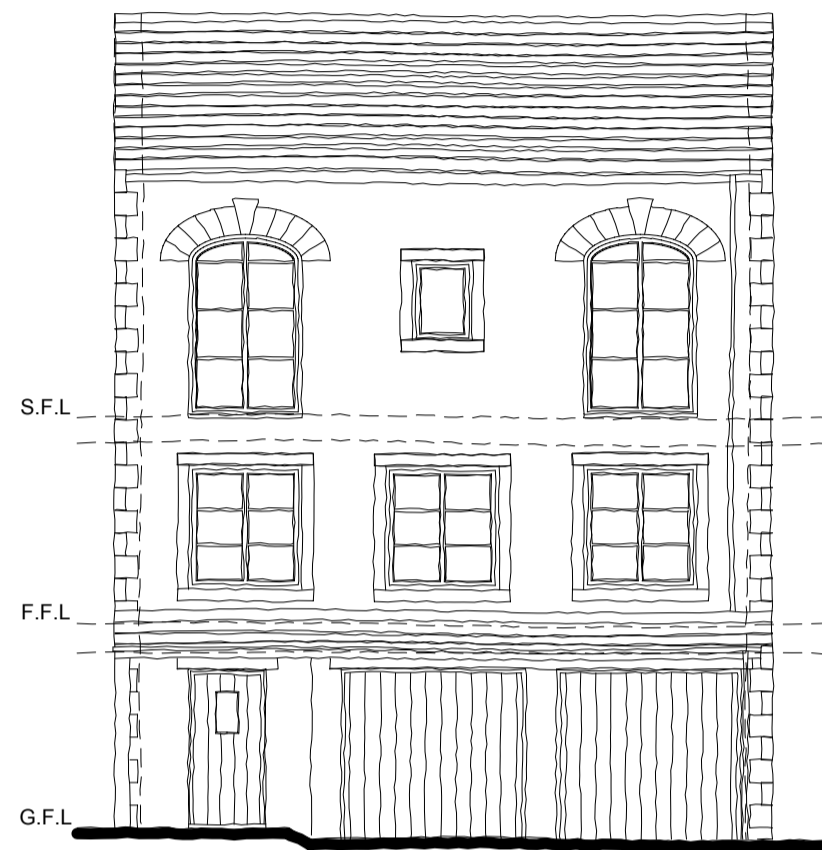
redefining space ■ delivering the vision



GROUND FLOOR PLAN
TYPE D - THE COWPE
FLOOR AREA = 643.6 SQ.FT

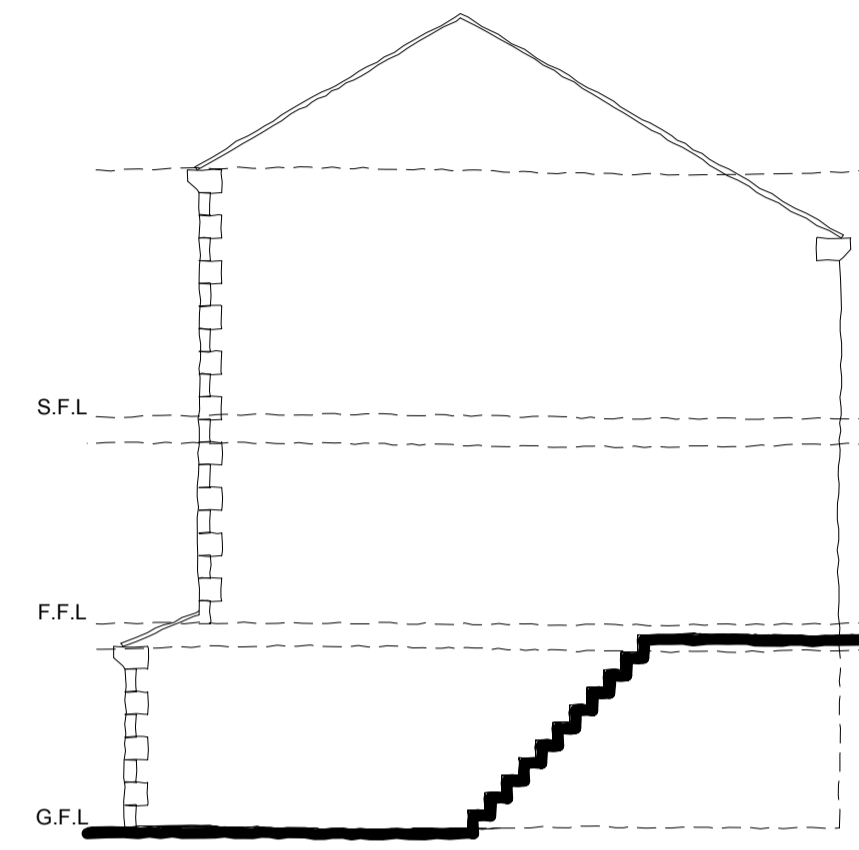


FIRST FLOOR PLAN
TYPE D - THE COWPE
FLOOR AREA = 643.6 SQ.FT



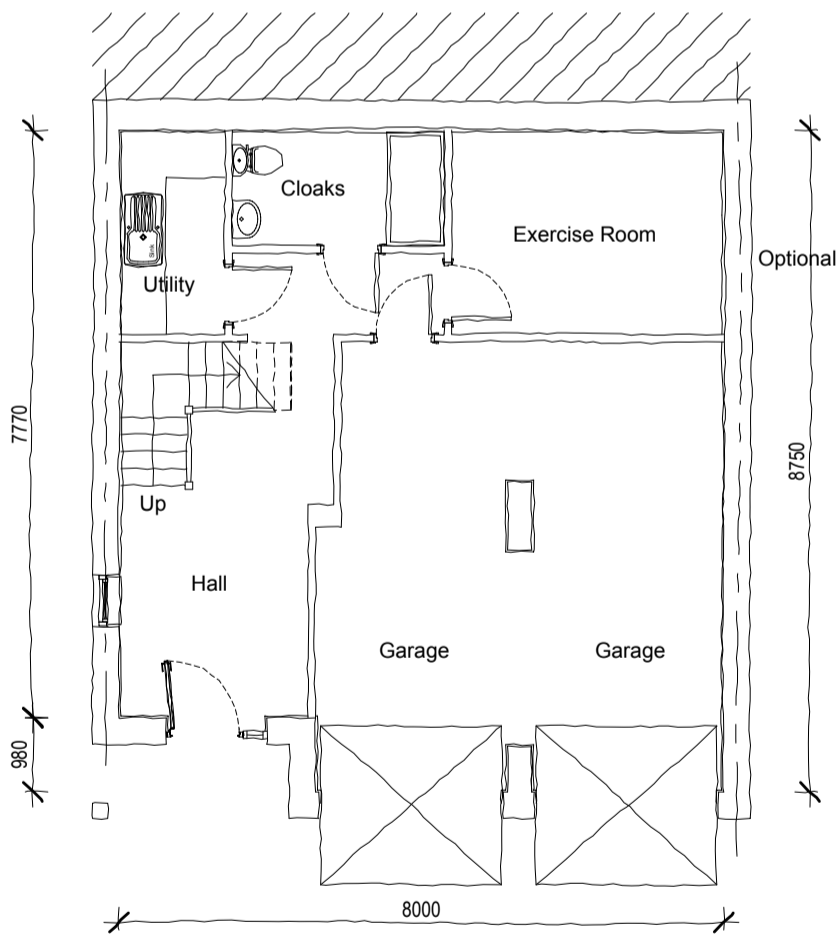
FRONT ELEVATION
HOUSE TYPE D - THE COWPE

AS



SIDE ELEVATION
HOUSE TYPE D - THE COWPE

AS

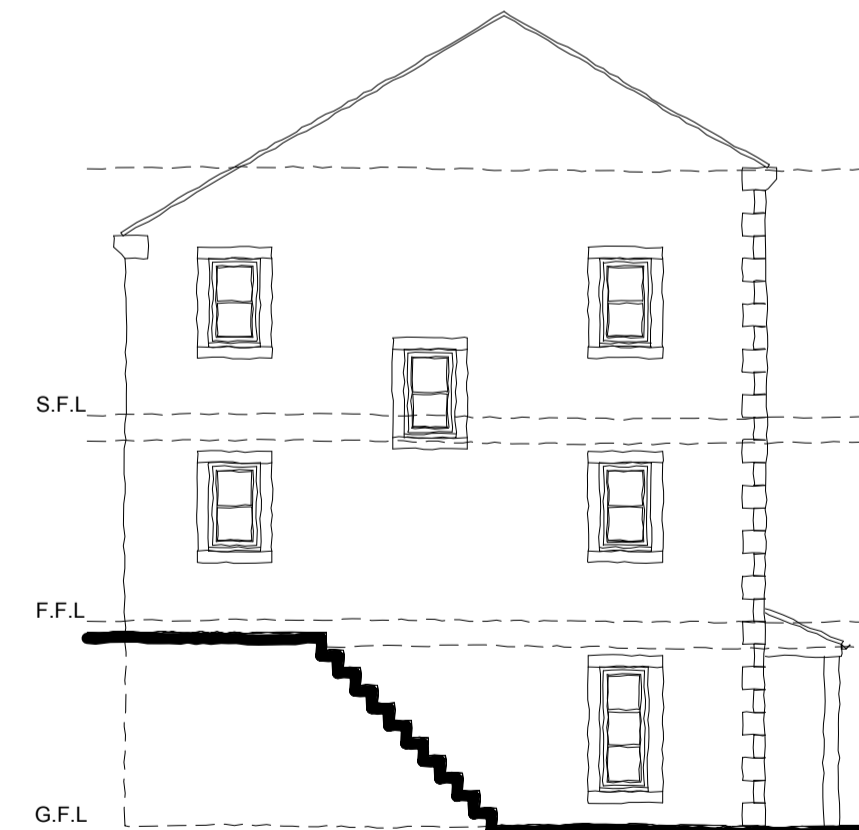


LOWER GROUND FLOOR PLAN
TYPE D - THE COWPE
FLORR AREA = 710.8 SQ.M



REAR ELEVATION
HOUSE TYPE D - THE COWPE

AS

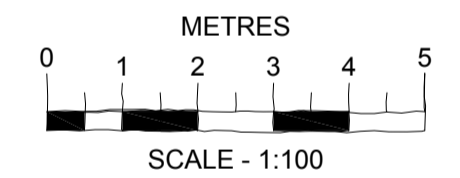


SIDE ELEVATION
HOUSE TYPE D - THE COWPE

AS

EXTERNAL MATERIALS

EXTERNAL FACING MATERIAL - NATURAL STONE
ROOF - ARTIFICIAL STONE SLATE TILE.
WINDOWS - DARK GREY UPVC.
HEADS, CILLS & MULLIONS - CAST STONE
DOORS - BLACK UPVC & DARK GREY FRAMES.
SOFFITS AND FASCIAS - BLACK UPVC.
RAINWATER GOODS - BLACK UPVC.



PLANNING ISSUE

Project:
New Build Residential Development
Kearns Mill
Cowpe Road, Waterfoot

Client: Skipton Properties
Proposed House Type D - The Cowpe - 4Bed Split Level
Option 1
Total Floor Area = 1998 SQ.FT (Excluding Garage Area)

Job No: 3901-005	Drawing No: PL13	Revision:
---------------------	---------------------	-----------

Date: 27/04/2012 Scale: 1:100 @ A2 Drawn: TES Checked: RPM
CAD Ref:

Note: Do not scale from this drawing. All dimensions to be checked on-site.

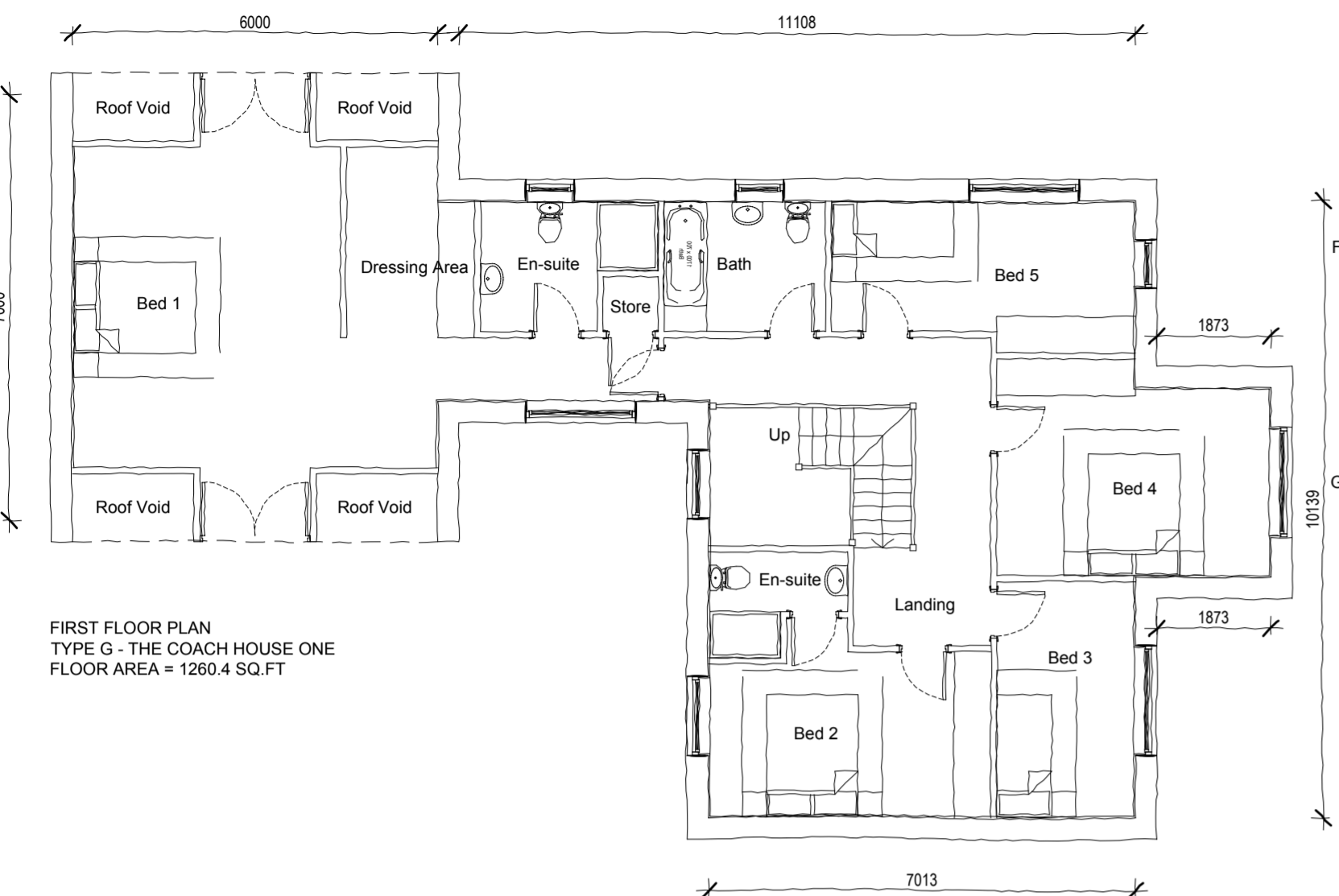
Watson Batty Architects Limited
Shires House, Shires Road
Guiseley, Leeds LS20 8EU

T: 01943 876 665
F: 01943 882 300
E: enquiries@watsonbatty.com
W: www.watsonbatty.com

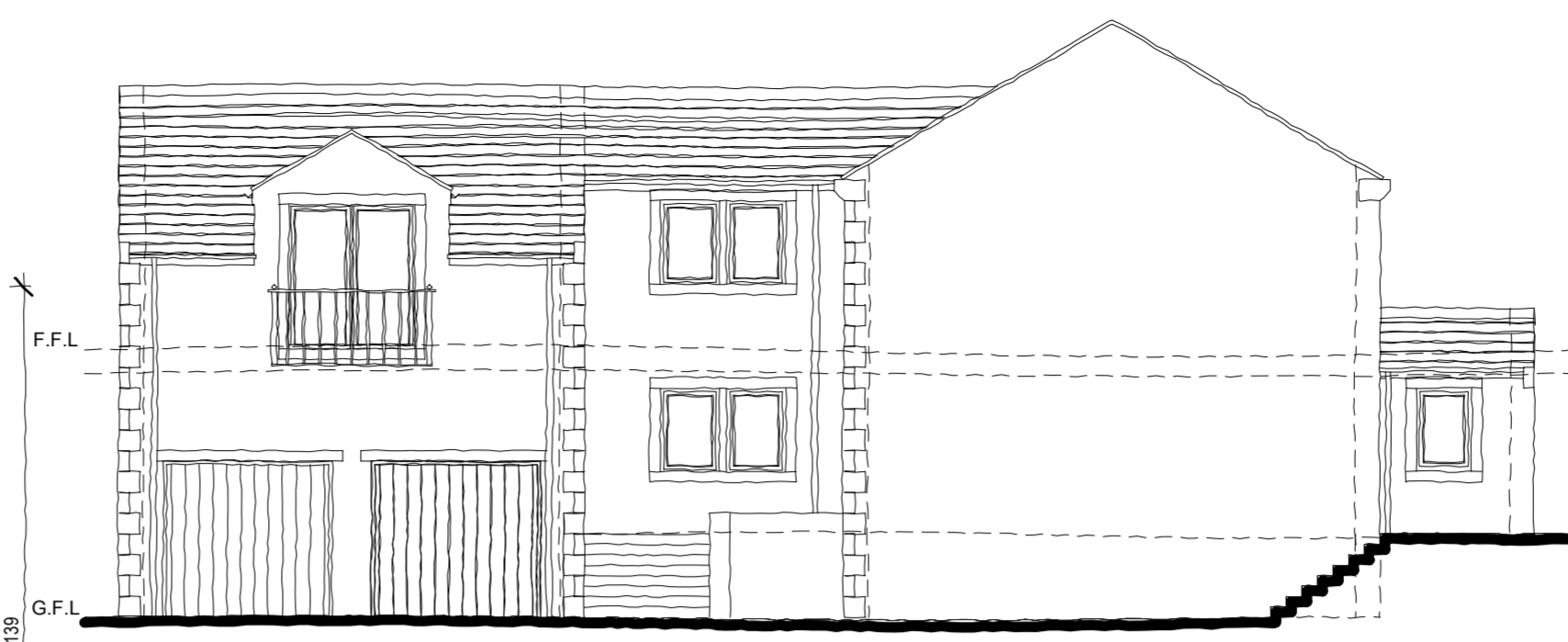


redefining space ■ delivering the vision

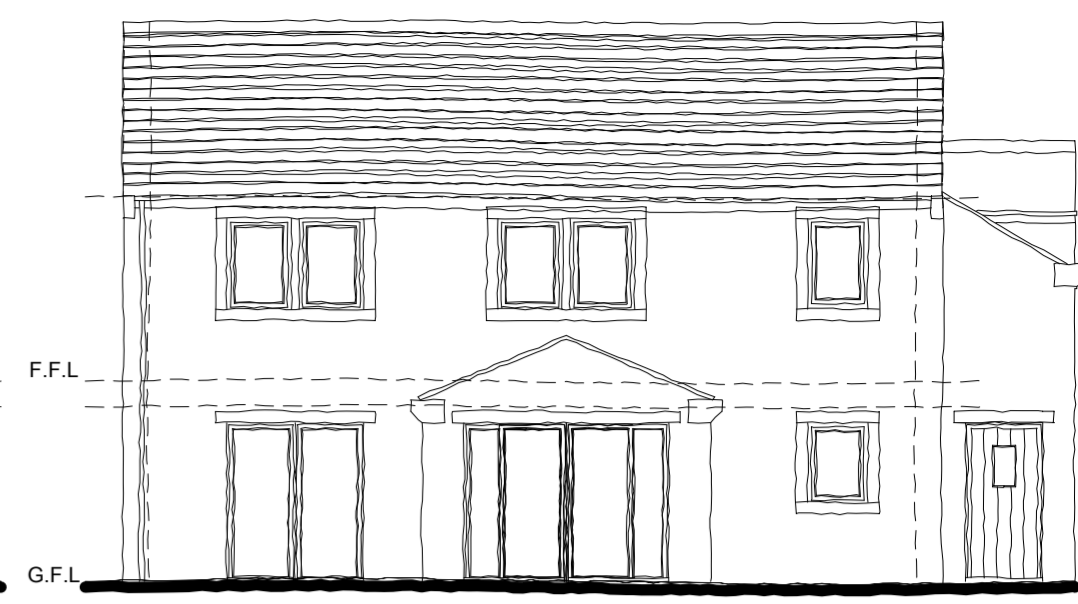
Copyright © Watson Batty Architects Limited



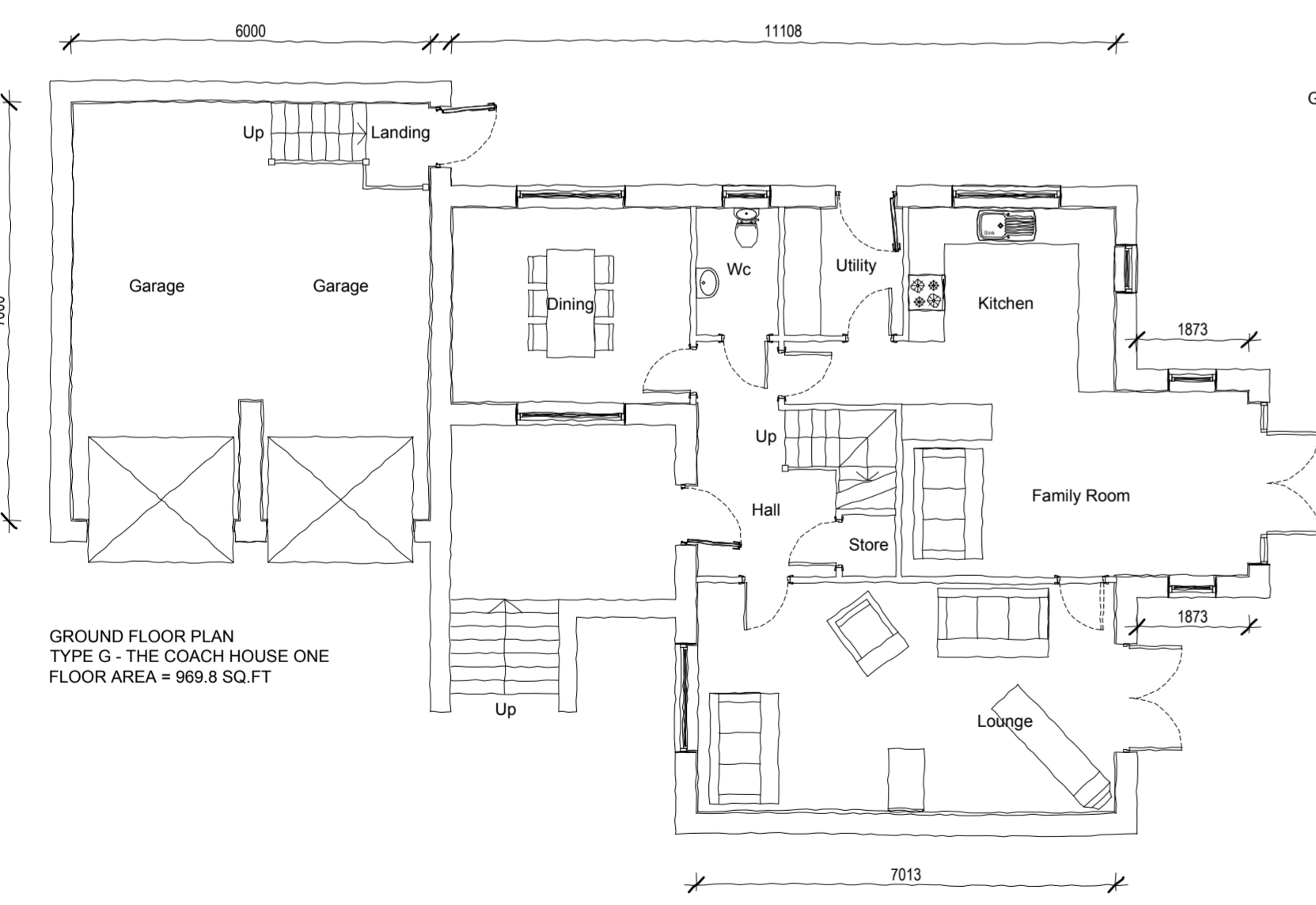
FIRST FLOOR PLAN
TYPE G - THE COACH HOUSE ONE
FLOOR AREA = 1260.4 SQ.FT



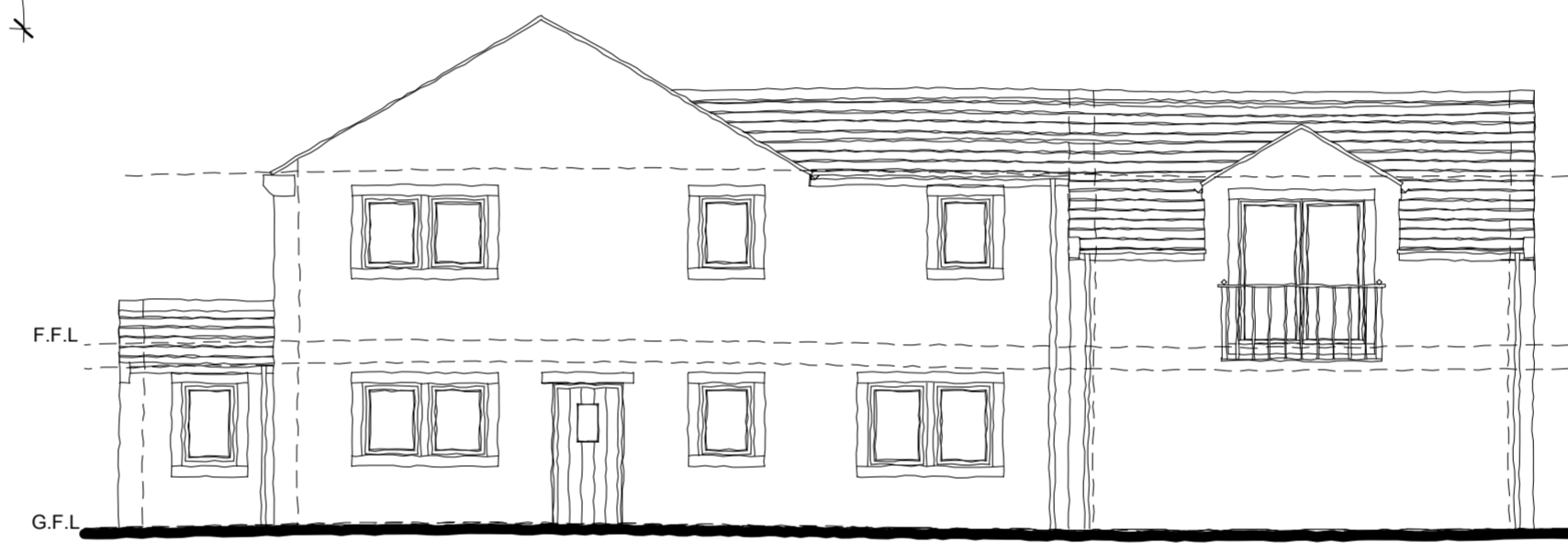
FRONT ELEVATION
HOUSE TYPE G - THE COACH HOUSE ONE
AS



SIDE ELEVATION
HOUSE TYPE G - THE COACH HOUSE ONE
AS



GROUND FLOOR PLAN
TYPE G - THE COACH HOUSE ONE
FLOOR AREA = 969.8 SQ.FT



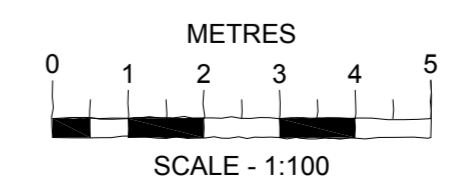
REAR ELEVATION
HOUSE TYPE G - THE COACH HOUSE ONE
AS



SIDE ELEVATION
HOUSE TYPE G - THE COACH HOUSE ONE
AS

EXTERNAL MATERIALS

- EXTERNAL FACING MATERIAL - NATURAL STONE
- ROOF - ARTIFICIAL STONE SLATE TILE.
- WINDOWS - DARK GREY UPVC.
- HEADS, CILLS & MULLIONS - CAST STONE
- DOORS - BLACK UPVC & DARK GREY FRAMES.
- SOFFITS AND FASCIAS - BLACK UPVC.
- RAINWATER GOODS - BLACK UPVC.



PLANNING ISSUE

Project:
New Build Residential Development
Kearns Mill
Cowpe Road, Waterfoot

Client: Skipton Properties
Proposed House Type G 5Bed
The Coach House One - 5Bed - Option 1
Total Floor Area = 2230.2 SQ.FT (Excluding Garage Area)

Job No:	Drawing No:	Revision:
3901-005	PL16	

Date: 27/04/2012 Scale: 1:100 @ A2 Drawn: TES Checked: RPM
CAD Ref:

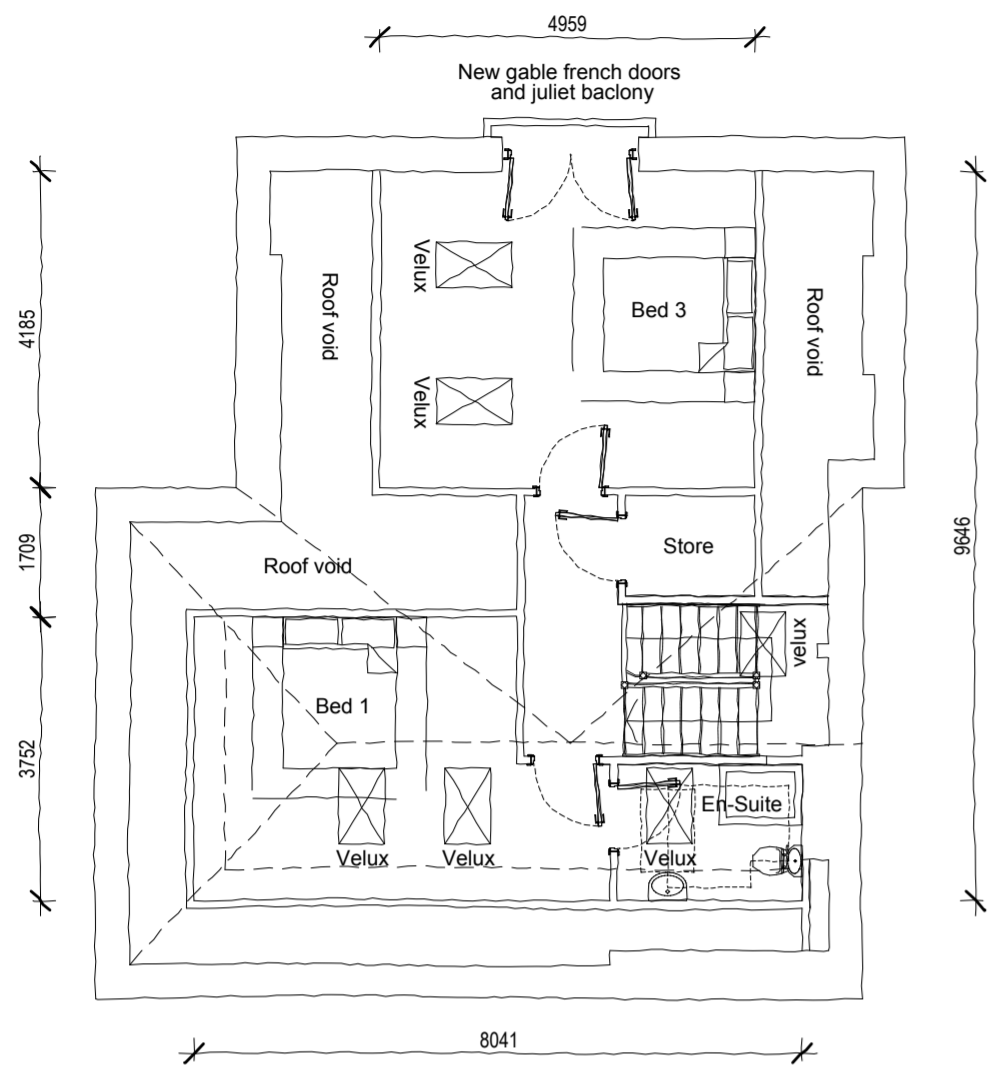
Note: Do not scale from this drawing. All dimensions to be checked on-site.

Watson Batty Architects Limited
Shires House, Shires Road
Guiseley, Leeds LS20 8EU

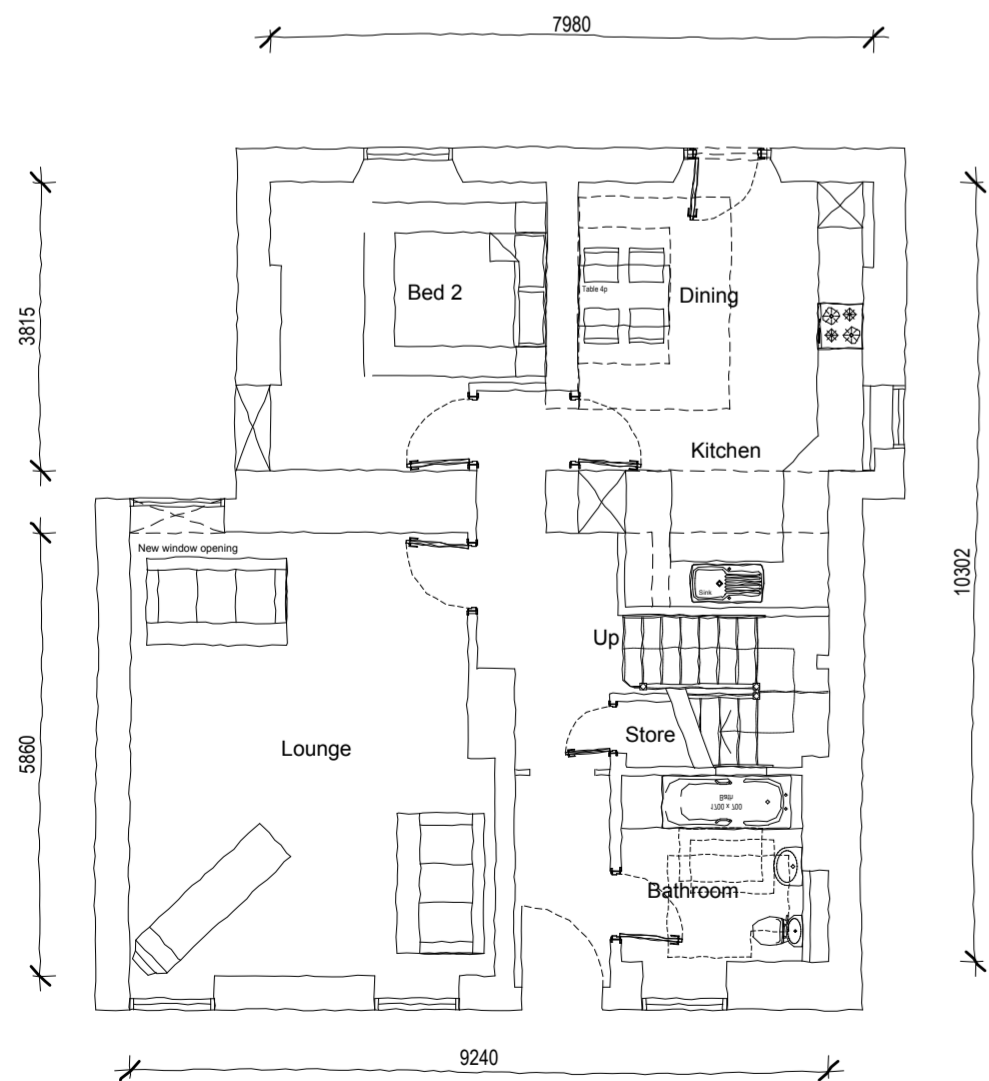
T: 01943 876 665
F: 01943 882 300
E: enquiries@watsonbatty.com
W: www.watsonbatty.com



redefining space ■ delivering the vision



FIRST FLOOR PLAN
TYPE K - THE GATE HOUSE
FLOOR AREA = 621.07 SQ.FT



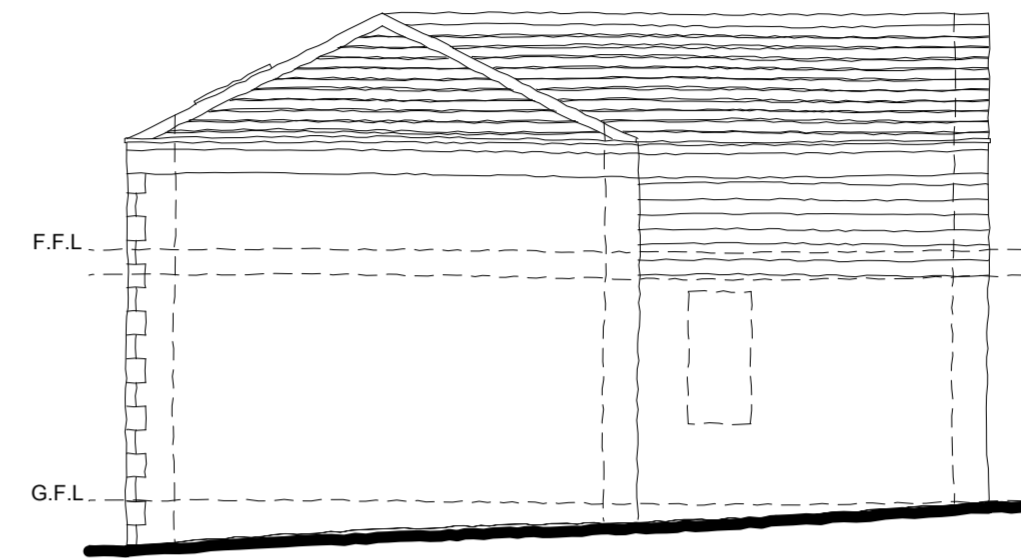
GROUND FLOOR PLAN
TYPE K - THE GATE HOUSE
FLOOR AREA = 942.91 SQ.FT



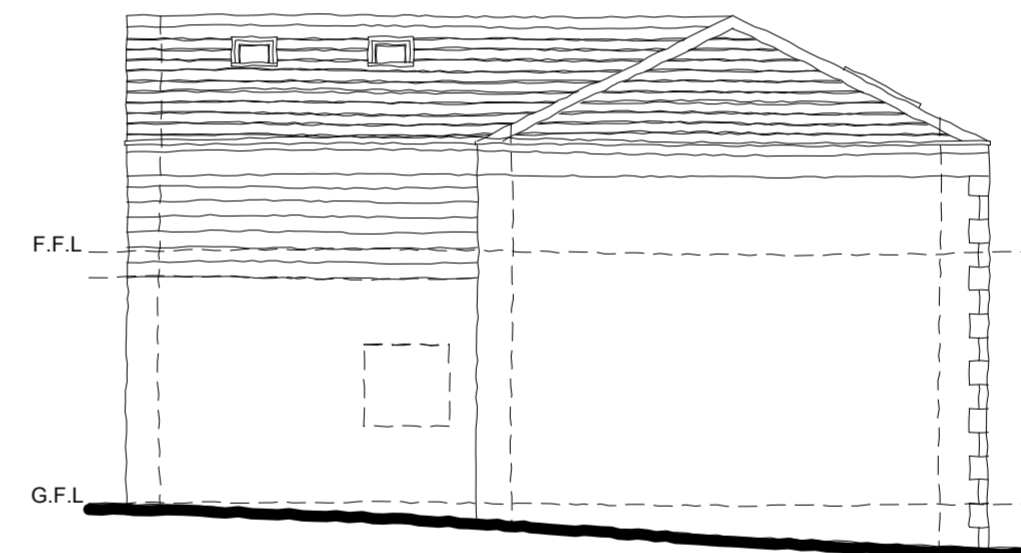
FRONT ELEVATION
HOUSE TYPE J - THE GATE HOUSE
AS



REAR ELEVATION
HOUSE TYPE J - THE GATE HOUSE
AS



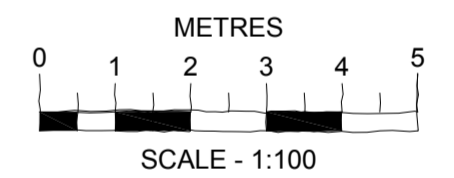
SIDE ELEVATION
HOUSE TYPE J - THE GATE HOUSE
AS



SIDE ELEVATION
HOUSE TYPE J - THE GATE HOUSE
AS

EXTERNAL MATERIALS

EXTERNAL FACING MATERIAL - NATURAL STONE
ROOF - ARTIFICIAL STONE SLATE TILE.
WINDOWS - DARK GREY UPVC.
HEADS, CILLS & MULLIONS - CAST STONE
DOORS - BLACK UPVC & DARK GREY FRAMES.
SOFFITS AND FASCIAS - BLACK UPVC.
RAINWATER GOODS - BLACK UPVC.



PLANNING ISSUE

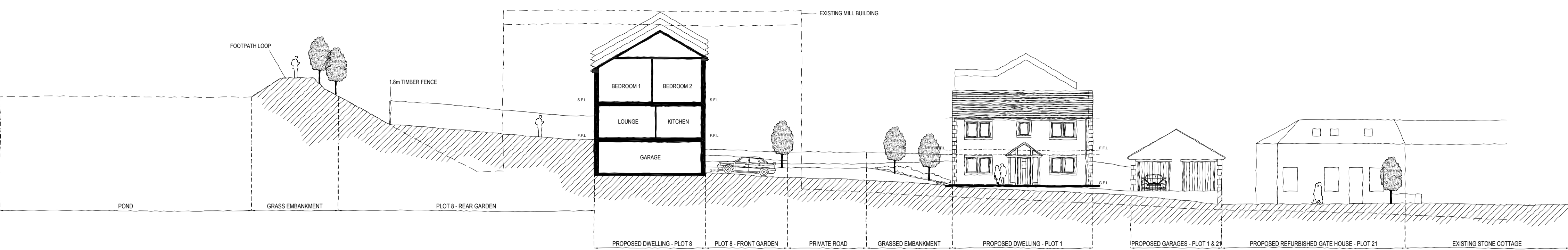
Project:		
New Build Residential Development Kearns Mill Cowpe Road, Waterfoot		
Client: Skipton Properties		
Proposed House Type J - The Gate House Option 2 Total Floor Area = 1564 SQ.FT (Excluding Garage Area)		
Job No:	Drawing No:	Revision:
3901-005	PL18	
Date: 11/06/2012 Scale: 1:100@A2 Drawn: VW Checked: TES		
CAD Ref: P:\3901-005\CAD\Sketch Drgs		
Note: Do not scale from this drawing. All dimensions to be checked on-site.		

Watson Batty Architects Limited
Shires House, Shires Road
Guisley, Leeds LS20 8EU

T: 01943 876 665
F: 01943 882 300
E: enquiries@watsonbatty.com
W: www.watsonbatty.com

WATSON BATTY architects

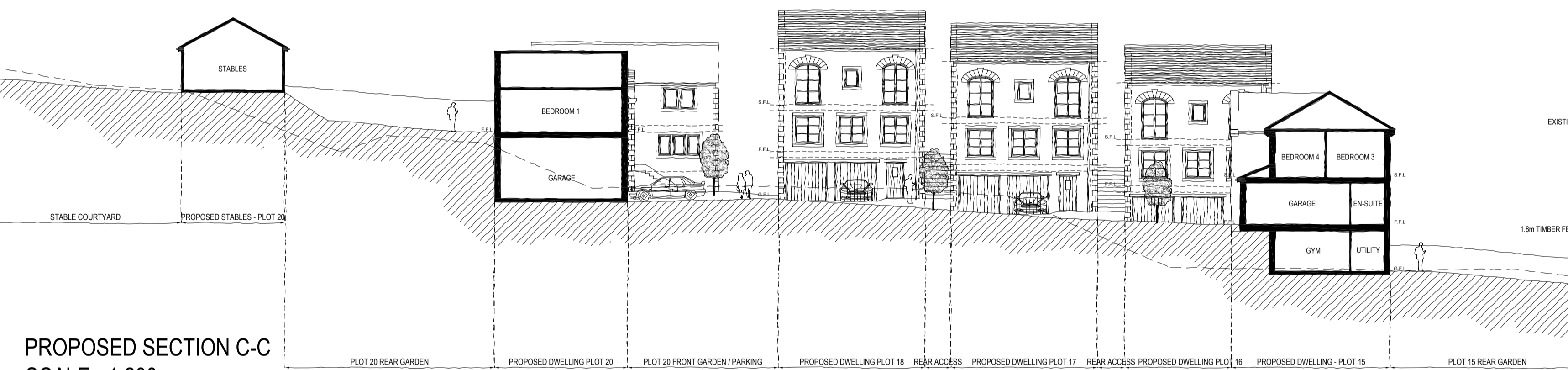
redefining space • delivering the vision



PROPOSED SECTION A-A
SCALE - 1:200



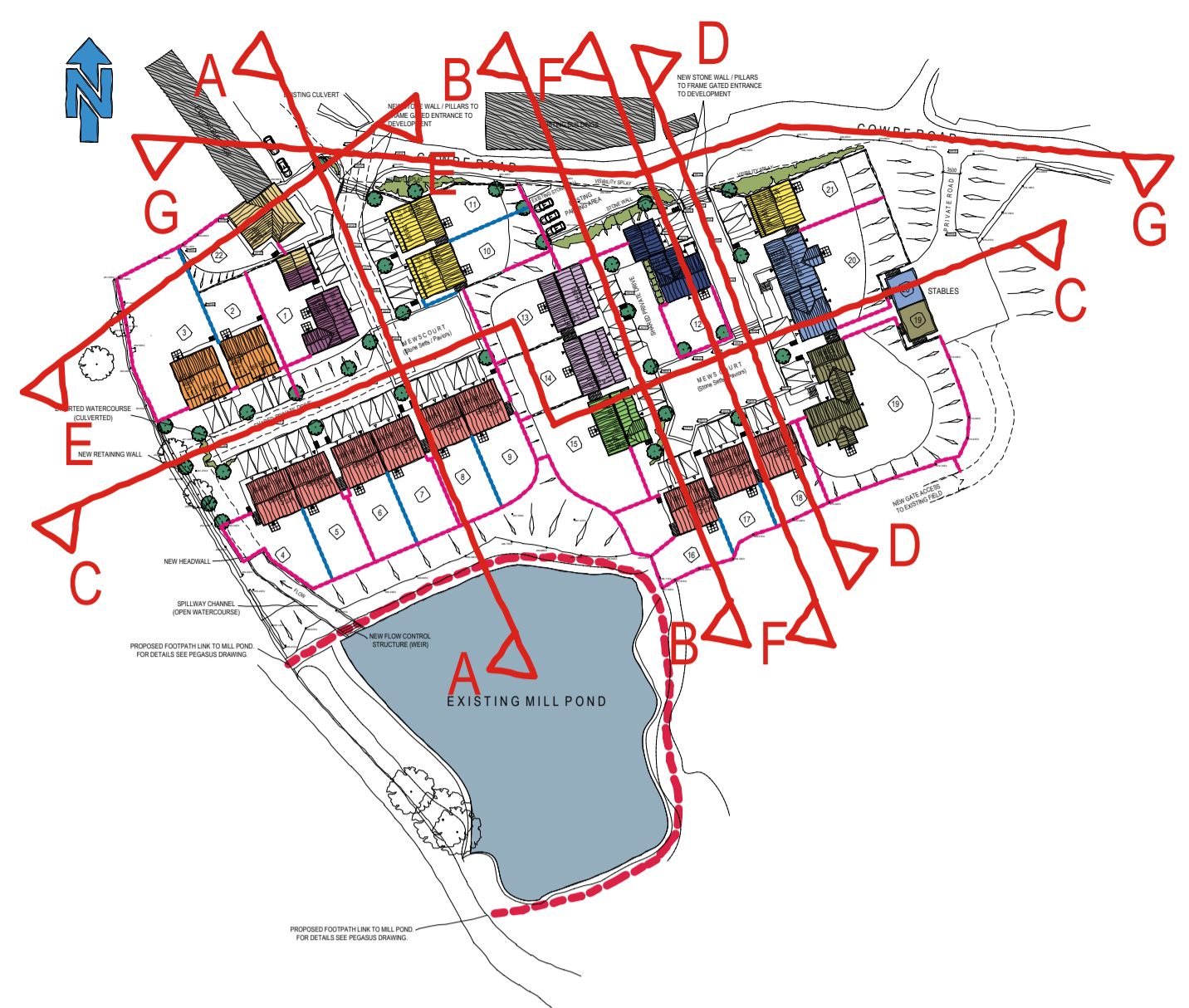
PROPOSED SECTION B-B
SCALE - 1:200



PROPOSED SECTION C-C
SCALE - 1:200



PROPOSED SECTION D-D
SCALE - 1:200



PROPOSED SITE PLAN
SCALE - 1:1250



PLANNING ISSUE

Project:
New Build Residential Development
Kearns Mill
Cowpe Road, Waterfoot

Client: Sipton Properties
Proposed Site Sections

Job No:	Drawing No:	Revision:
3901-005	PL20	

Date: 04/09/2012 Scale: 1:200 @ A1 Drawn: TES Checked: RPM
CAD Ref:

Note: Do not scale from this drawing. All dimensions to be checked on-site.

Watson Batty Architects Limited
Shires House, Shires Road
Guiseley, Leeds LS20 8EU
T: 01943 876 665
F: 01943 882 300
E: enquiries@watsonbatty.com
W: www.watsonbatty.com

WATSON BATTY
architects

EXTERNAL MATERIALS

EXTERNAL FACING MATERIAL - NATURAL STONE
ROOF - ARTIFICIAL STONE SLATE TILE.
WINDOWS - DARK GREY UPVC.
HEADS, CILLS & MULLIONS - CAST STONE
DOORS - BLACK UPVC & DARK GREY FRAMES.
SOFFITS AND FASCIAS - BLACK UPVC.
RAINWATER GOODS - BLACK UPVC.

