

Revision:	Date:	Drawn:	Checked:
-----------	-------	--------	----------

PLANNING ISSUE

Project:
 New Build Residential Development
 Kearns Mill
 Cowpe Road, Waterfoot

Client: Skipton Properties

Location Plan

Job No:	Drawing No:	Revision:
3901-005	PL02	

Date: 19/02/2013 Scale: 1:1250@A3 Drawn: TES Checked: RPM
 CAD Ref: P:\3901-005\CAD\

Note: Do not scale from this drawing. All dimensions to be checked on-site.

Watson Batty Architects Limited
 Shires House, Shires Road
 Guiseley, Leeds LS20 8EU
 T: 01943 876 665
 F: 01943 882 300
 E: enquiries@watsonbatty.com
 W: www.watsonbatty.com





STATION	Easting	Northing	Height
ST01	258.12	278.12	278.12
ST02	258.13	278.13	278.13
ST03	258.14	278.14	278.14
ST04	258.15	278.15	278.15
ST05	258.16	278.16	278.16
ST06	258.17	278.17	278.17
ST07	258.18	278.18	278.18
ST08	258.19	278.19	278.19
ST09	258.20	278.20	278.20
ST10	258.21	278.21	278.21
ST11	258.22	278.22	278.22
ST12	258.23	278.23	278.23
ST13	258.24	278.24	278.24
ST14	258.25	278.25	278.25
ST15	258.26	278.26	278.26
ST16	258.27	278.27	278.27
ST17	258.28	278.28	278.28
ST18	258.29	278.29	278.29
ST19	258.30	278.30	278.30
ST20	258.31	278.31	278.31
ST21	258.32	278.32	278.32
ST22	258.33	278.33	278.33
ST23	258.34	278.34	278.34
ST24	258.35	278.35	278.35
ST25	258.36	278.36	278.36
ST26	258.37	278.37	278.37
ST27	258.38	278.38	278.38
ST28	258.39	278.39	278.39
ST29	258.40	278.40	278.40
ST30	258.41	278.41	278.41
ST31	258.42	278.42	278.42
ST32	258.43	278.43	278.43
ST33	258.44	278.44	278.44
ST34	258.45	278.45	278.45
ST35	258.46	278.46	278.46
ST36	258.47	278.47	278.47
ST37	258.48	278.48	278.48
ST38	258.49	278.49	278.49
ST39	258.50	278.50	278.50
ST40	258.51	278.51	278.51
ST41	258.52	278.52	278.52
ST42	258.53	278.53	278.53
ST43	258.54	278.54	278.54
ST44	258.55	278.55	278.55
ST45	258.56	278.56	278.56
ST46	258.57	278.57	278.57
ST47	258.58	278.58	278.58
ST48	258.59	278.59	278.59
ST49	258.60	278.60	278.60
ST50	258.61	278.61	278.61
ST51	258.62	278.62	278.62
ST52	258.63	278.63	278.63
ST53	258.64	278.64	278.64
ST54	258.65	278.65	278.65
ST55	258.66	278.66	278.66
ST56	258.67	278.67	278.67
ST57	258.68	278.68	278.68
ST58	258.69	278.69	278.69
ST59	258.70	278.70	278.70
ST60	258.71	278.71	278.71
ST61	258.72	278.72	278.72
ST62	258.73	278.73	278.73
ST63	258.74	278.74	278.74
ST64	258.75	278.75	278.75
ST65	258.76	278.76	278.76
ST66	258.77	278.77	278.77
ST67	258.78	278.78	278.78
ST68	258.79	278.79	278.79
ST69	258.80	278.80	278.80
ST70	258.81	278.81	278.81
ST71	258.82	278.82	278.82
ST72	258.83	278.83	278.83
ST73	258.84	278.84	278.84
ST74	258.85	278.85	278.85
ST75	258.86	278.86	278.86
ST76	258.87	278.87	278.87
ST77	258.88	278.88	278.88
ST78	258.89	278.89	278.89
ST79	258.90	278.90	278.90
ST80	258.91	278.91	278.91
ST81	258.92	278.92	278.92
ST82	258.93	278.93	278.93
ST83	258.94	278.94	278.94
ST84	258.95	278.95	278.95
ST85	258.96	278.96	278.96
ST86	258.97	278.97	278.97
ST87	258.98	278.98	278.98
ST88	258.99	278.99	278.99
ST89	259.00	279.00	279.00
ST90	259.01	279.01	279.01
ST91	259.02	279.02	279.02
ST92	259.03	279.03	279.03
ST93	259.04	279.04	279.04
ST94	259.05	279.05	279.05
ST95	259.06	279.06	279.06
ST96	259.07	279.07	279.07
ST97	259.08	279.08	279.08
ST98	259.09	279.09	279.09
ST99	259.10	279.10	279.10
ST100	259.11	279.11	279.11

Revision:	Date:	Drawn:	Checked:
-----------	-------	--------	----------

PLANNING ISSUE

Project:
 New Build Residential Development
 Kearns Mill
 Cowpe Road, Waterfoot

Client: Skipton Properties
 Topographical Survey

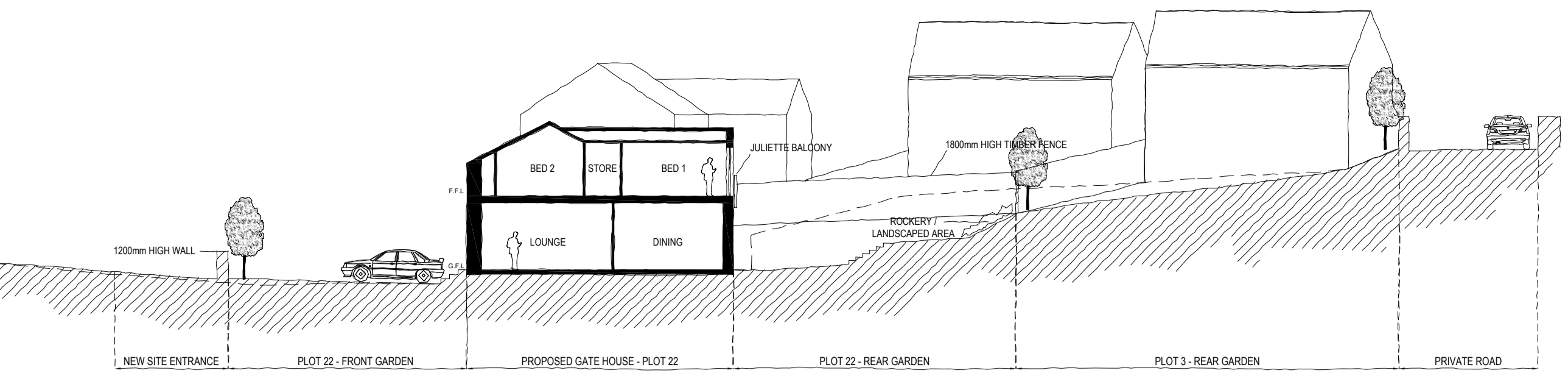
Job No:	Drawing No:	Revision:
3901-005	PL01	

Date: 09/05/2012 Scale: 1:200@A0 Drawn: VW Checked: TES
 CAD Ref: P:3901-005/CAD/Sketch Drgs

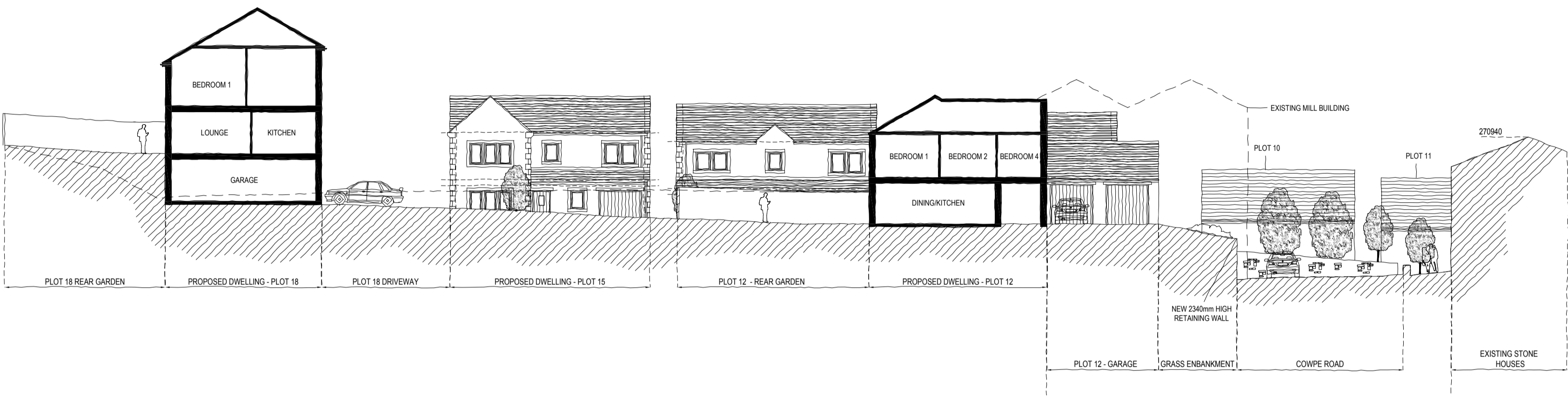
Note: Do not scale from this drawing. All dimensions to be checked on-site.

Watson Batty Architects Limited
 Shires House, Shires Road
 Guiseley, Leeds LS20 8EU
 T: 01943 876 665
 F: 01943 882 300
 E: enquiries@watsonbatty.com
 W: www.watsonbatty.com

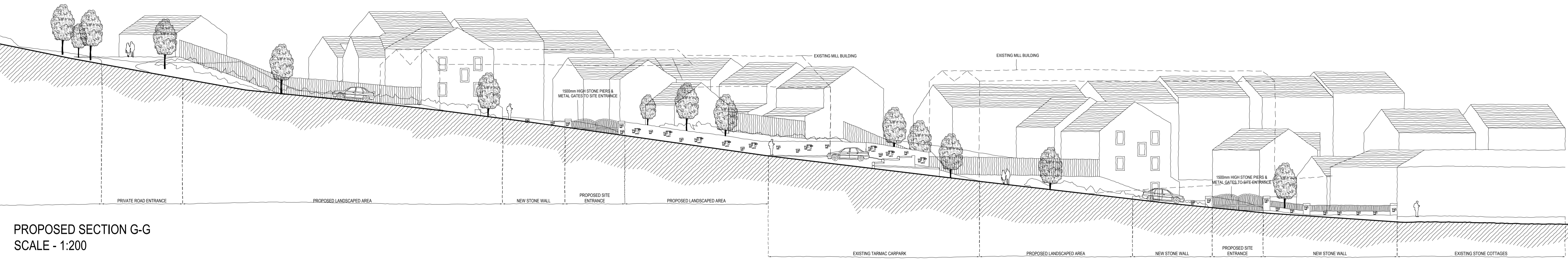
redefining space • delivering the vision



PROPOSED SECTION E-E
SCALE - 1:200



PROPOSED SECTION F-F
SCALE - 1:200

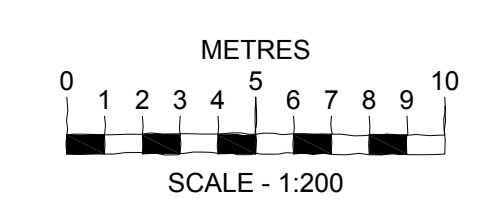


PROPOSED SECTION G-G
SCALE - 1:200



PROPOSED SITE PLAN
SCALE - 1:1250

EXTERNAL MATERIALS
 EXTERNAL FACING MATERIAL - NATURAL STONE
 ROOF - ARTIFICIAL STONE SLATE TILE
 WINDOWS - DARK GREY UPVC
 HEADS, CILLS & MULLIONS - CAST STONE
 DOORS - BLACK UPVC & DARK GREY FRAMES
 SOFFITS AND FASCIAS - BLACK UPVC
 RAINWATER GOODS - BLACK UPVC



PLANNING ISSUE

Project:
New Build Residential Development
 Kearns Mill
 Cowpe Road, Waterfoot

Client: **Skipton Properties**

Proposed Site Sections

Job No:	Drawing No:	Revision:
3901-005	PL21	

Date: 09/11/2012 Scale: 1:200 @ A1 Drawn: TES Checked: RPM
 CAD Ref:

Note: Do not scale from this drawing. All dimensions to be checked on-site.

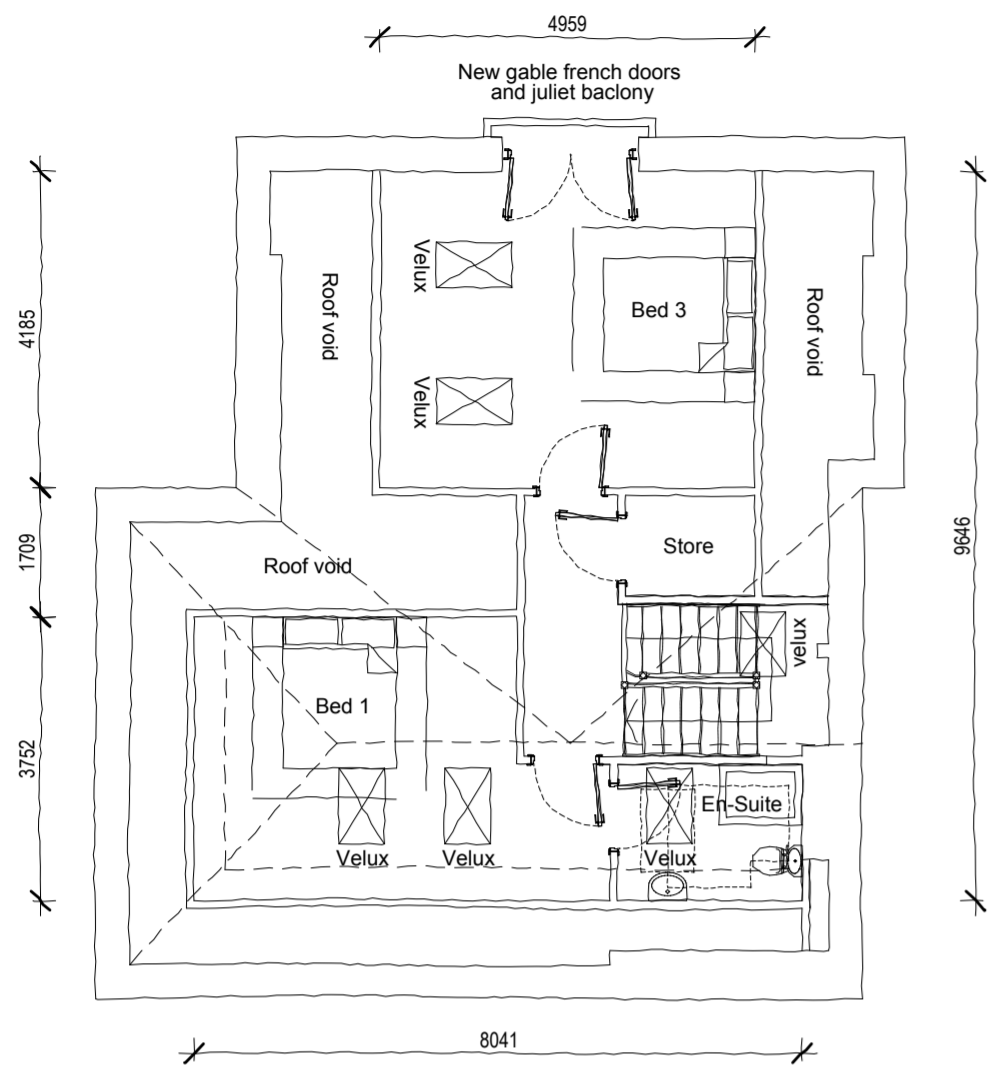
Watson Batty Architects Limited
 Shires House, Shires Road
 Guiseley, Leeds LS20 8EU

T: 01943 876 665
 F: 01943 882 300
 E: enquiries@watsonbatty.com
 W: www.watsonbatty.com

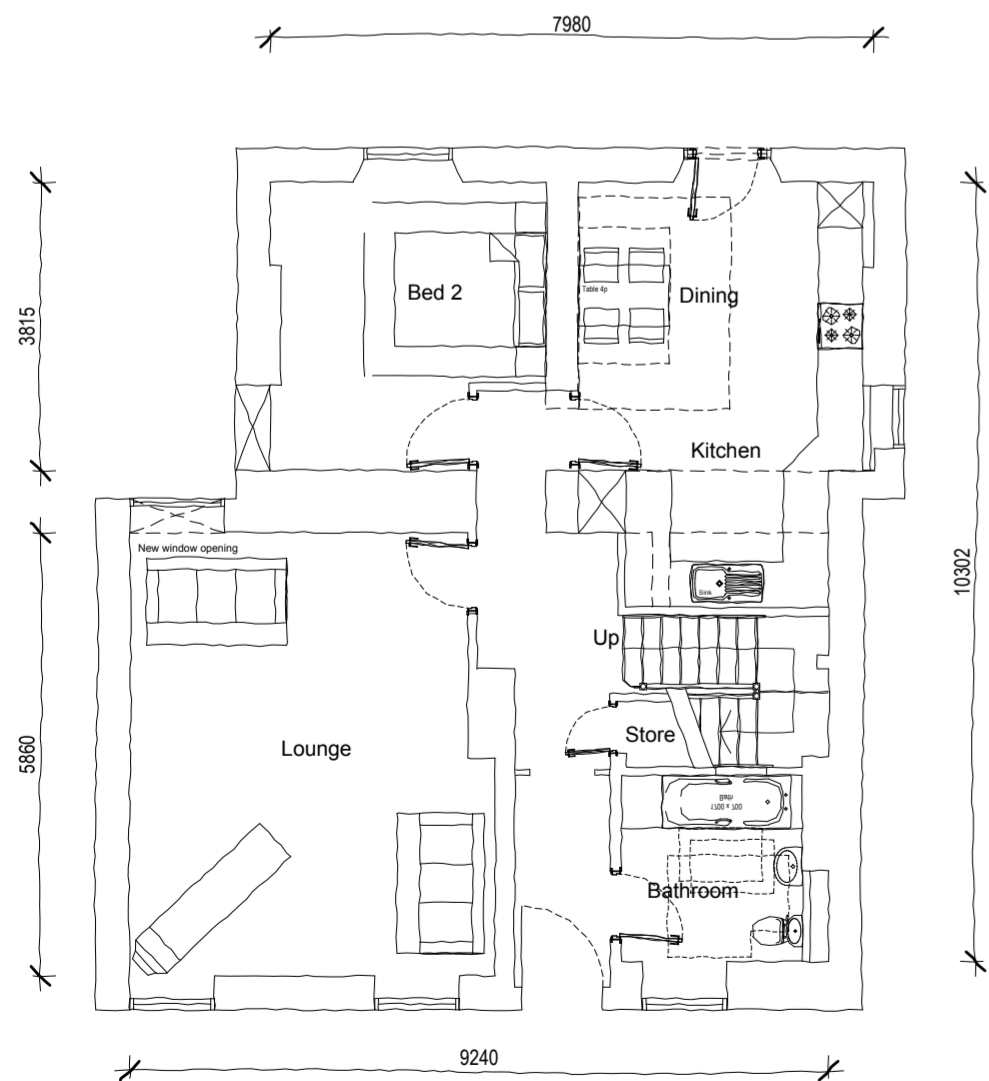
WATSON BATTY
architects

Copyright © Watson Batty Architects Limited

redefining space ■ delivering the vision



FIRST FLOOR PLAN
TYPE K - THE GATE HOUSE
FLOOR AREA = 621.07 SQ.FT



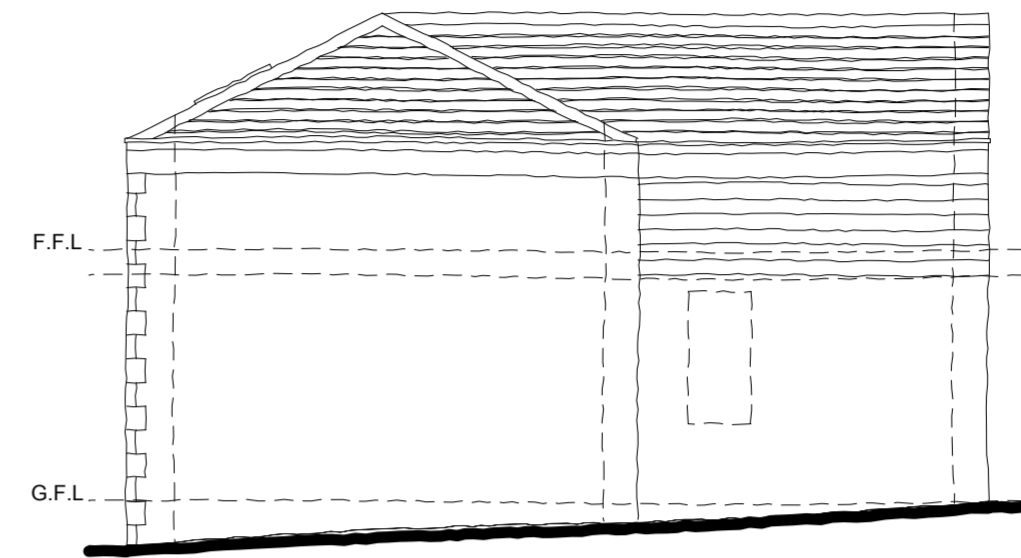
GROUND FLOOR PLAN
TYPE K - THE GATE HOUSE
FLOOR AREA = 942.91 SQ.FT



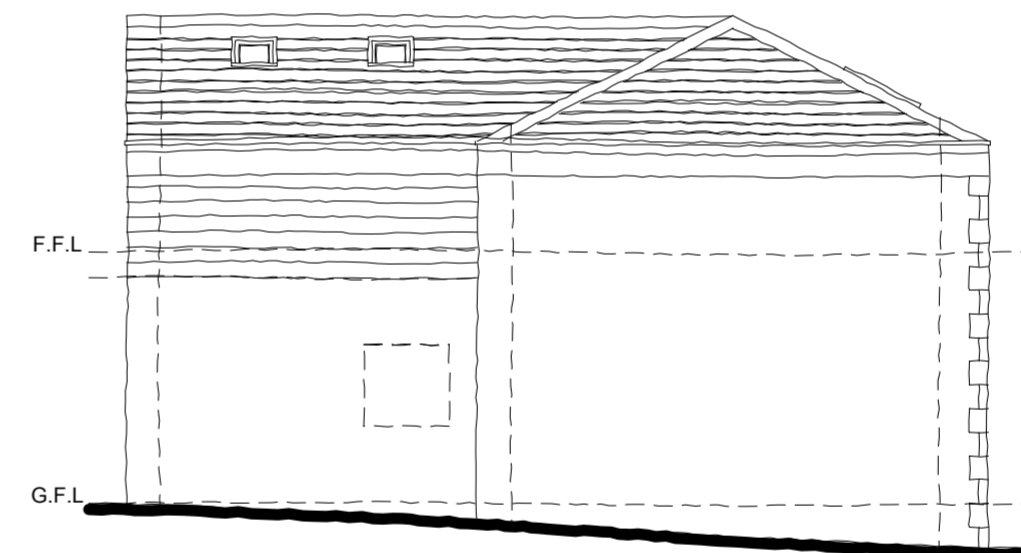
FRONT ELEVATION
HOUSE TYPE J - THE GATE HOUSE
AS



REAR ELEVATION
HOUSE TYPE J - THE GATE HOUSE
AS



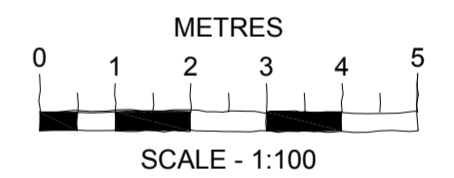
SIDE ELEVATION
HOUSE TYPE J - THE GATE HOUSE
AS



SIDE ELEVATION
HOUSE TYPE J - THE GATE HOUSE
AS

EXTERNAL MATERIALS

EXTERNAL FACING MATERIAL - NATURAL STONE
ROOF - ARTIFICIAL STONE SLATE TILE.
WINDOWS - DARK GREY UPVC.
HEADS, CILLS & MULLIONS - CAST STONE
DOORS - BLACK UPVC & DARK GREY FRAMES.
SOFFITS AND FASCIAS - BLACK UPVC.
RAINWATER GOODS - BLACK UPVC.



PLANNING ISSUE

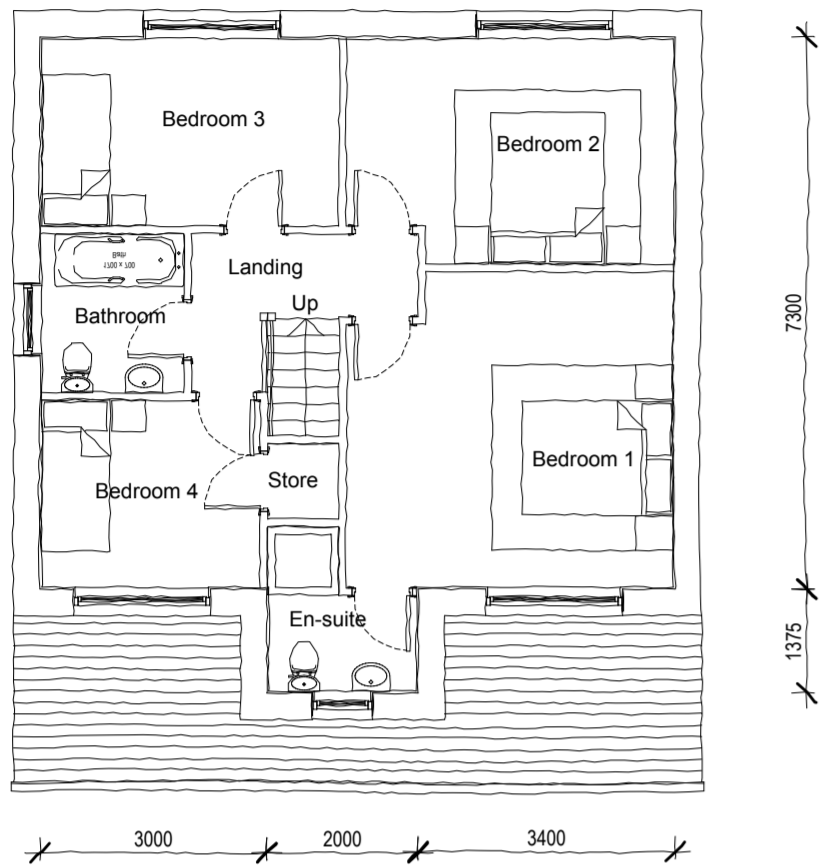
Project:		
New Build Residential Development Kearns Mill Cowpe Road, Waterfoot		
Client: Skipton Properties		
Proposed House Type J - The Gate House Option 2 Total Floor Area = 1564 SQ.FT (Excluding Garage Area)		
Job No:	Drawing No:	Revision:
3901-005	PL18	
Date: 11/06/2012 Scale: 1:100@A2 Drawn: VW Checked: TES		
CAD Ref: P:\3901-005\CAD\Sketch Drgs		
Note: Do not scale from this drawing. All dimensions to be checked on-site.		

Watson Batty Architects Limited
Shires House, Shires Road
Guisley, Leeds LS20 8EU

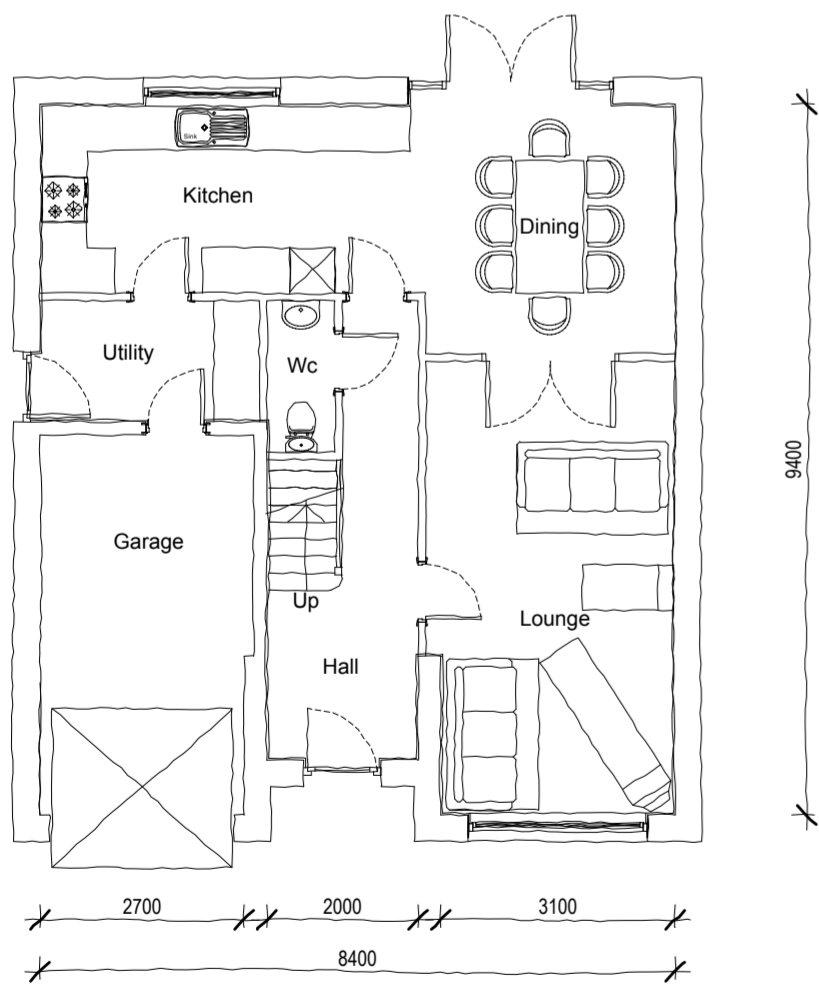
T: 01943 876 665
F: 01943 882 300
E: enquiries@watsonbatty.com
W: www.watsonbatty.com

WATSON BATTY architects

redefining space • delivering the vision



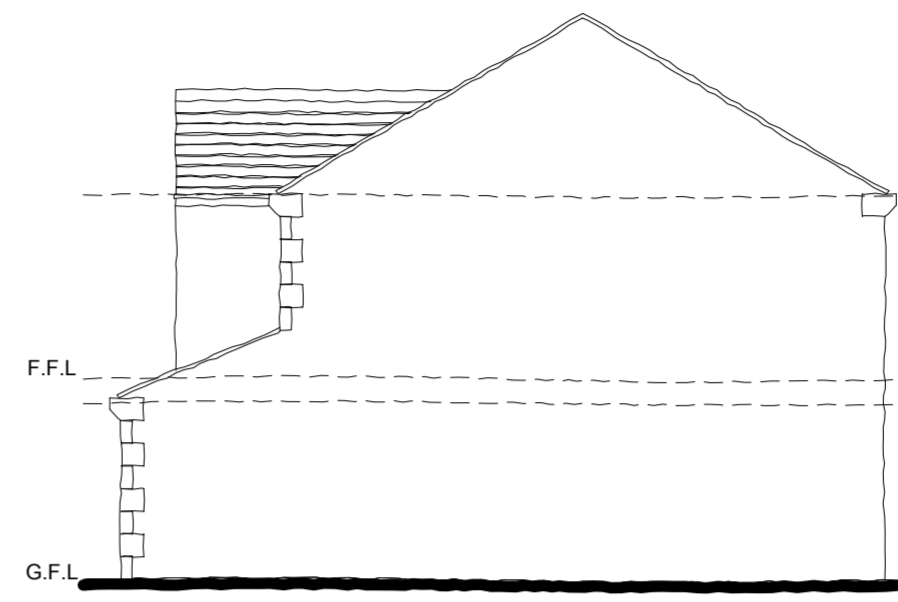
FIRST FLOOR PLAN
TYPE A - THE ERMYSTED
FLOOR AREA 680.3 SQ.FT



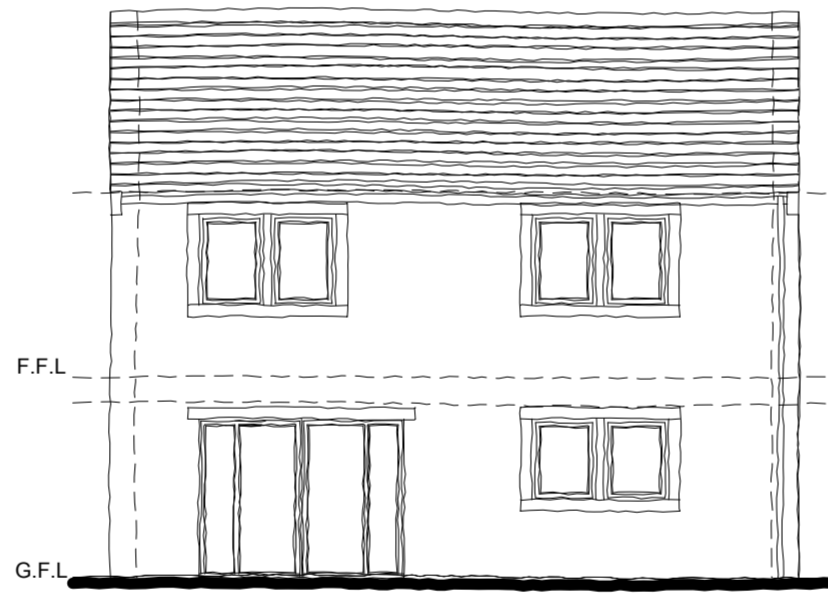
GROUND FLOOR PLAN
TYPE A - THE ERMYSTED
FLOOR AREA 649 SQ.FT



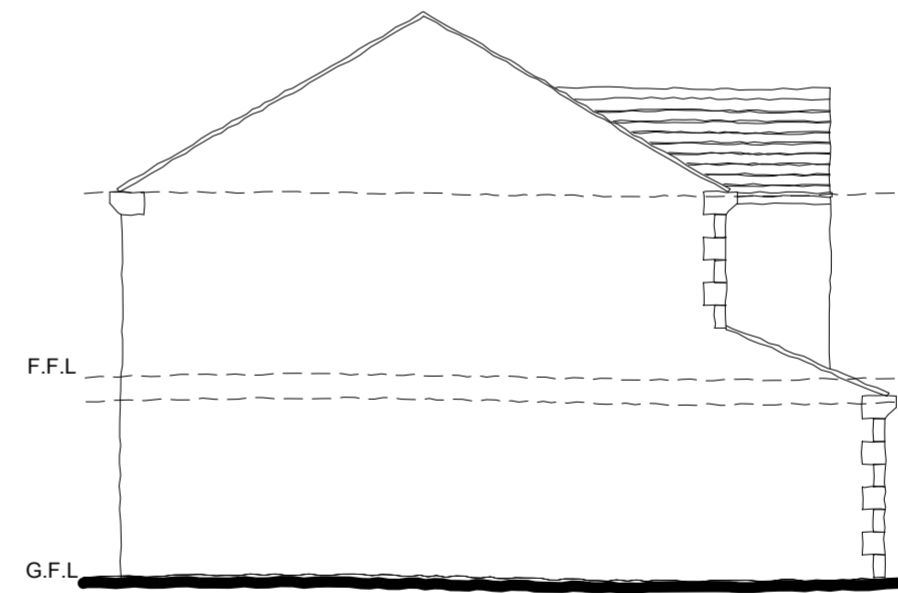
FRONT ELEVATION
HOUSE TYPE A - THE ERMYSTED
AS



SIDE ELEVATION
HOUSE TYPE A - THE ERMYSTED
AS



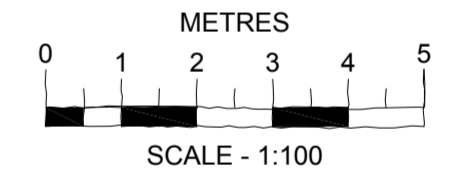
REAR ELEVATION
HOUSE TYPE A - THE ERMYSTED
AS



SIDE ELEVATION
HOUSE TYPE A - THE ERMYSTED
AS

EXTERNAL MATERIALS

EXTERNAL FACING MATERIAL - NATURAL STONE
ROOF - ARTIFICIAL STONE SLATE TILE
WINDOWS - DARK GREY UPVC
HEADS, CILLS & MULLIONS - CAST STONE
DOORS - BLACK UPVC & DARK GREY FRAMES.
SOFFITS AND FASCIAS - BLACK UPVC.
RAINWATER GOODS - BLACK UPVC.



PLANNING ISSUE

Project:		
New Build Residential Development Kearns Mill Cowpe Road, Waterfoot		
Client: Skipton Properties		
Proposed House Type A - The Ermysted - 4 Bed Option 1 Total Floor Area = 1329.3 SQ.FT (Excluding Garage Area)		
Job No:	Drawing No:	Revision:
3901-005	PL10	
Date: 09/05/2012 Scale: 1:100@A2 Drawn: VW Checked: TES CAD Ref: P:13901-005/CAD/Sketch Drgs		
Note: Do not scale from this drawing. All dimensions to be checked on-site.		

Watson Batty Architects Limited
Shires House, Shires Road
Guiseley, Leeds LS20 8EU

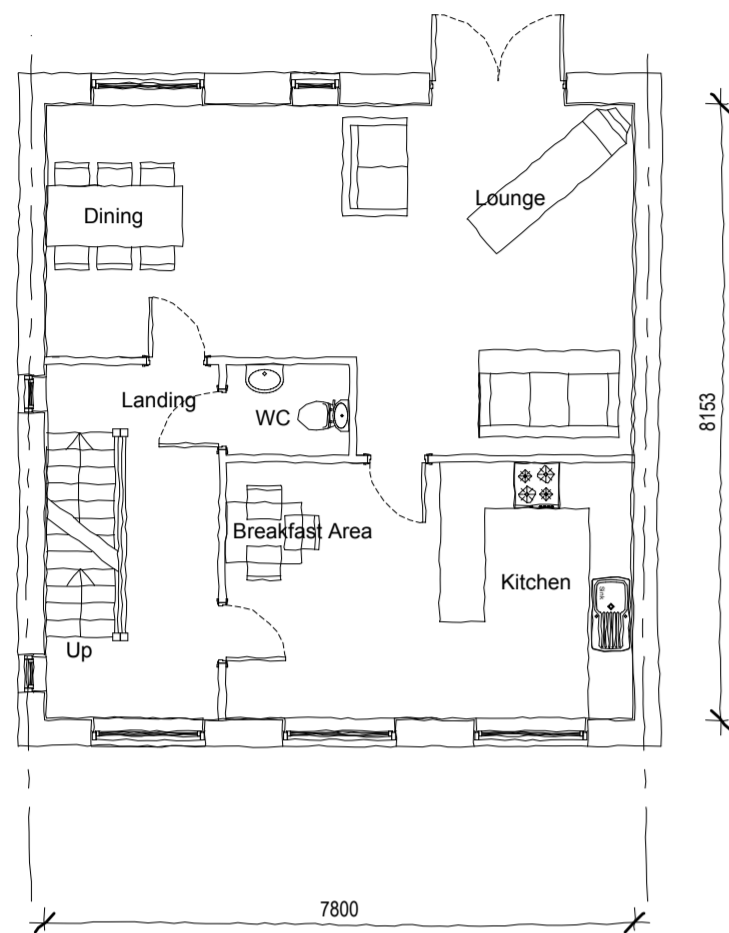
T: 01943 876 665
F: 01943 882 300
E: enquiries@watsonbatty.com
W: www.watsonbatty.com

WATSON BATTY
architects

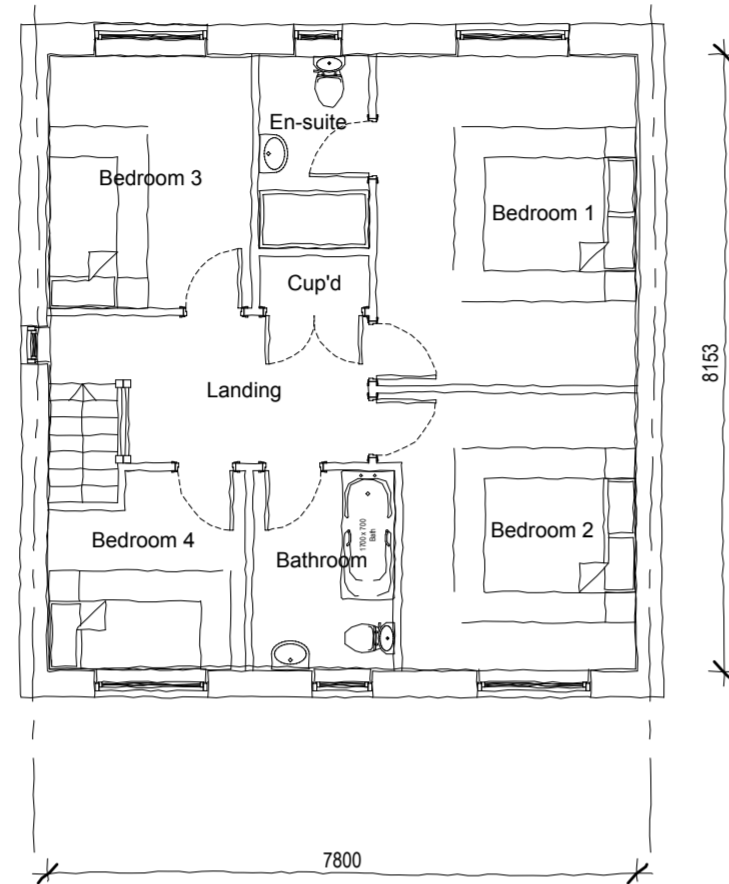
ISO 9001:2000
BUREAU VERITAS
DIVISIONE DI PEOPLE

Copyright © Watson Batty Architects Limited

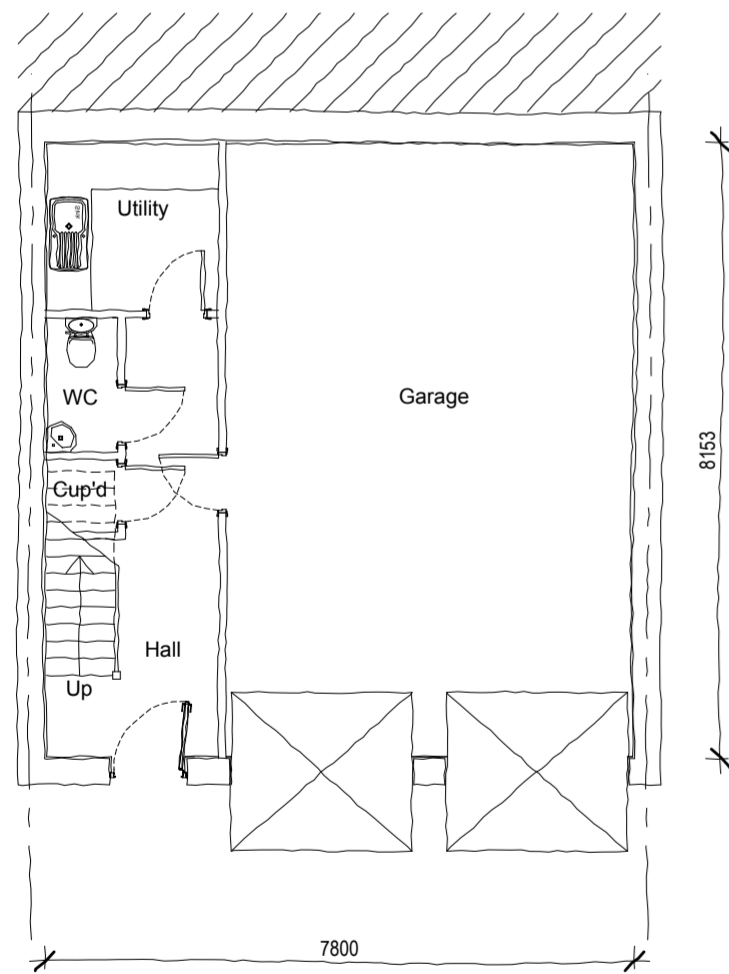
redefining space • delivering the vision



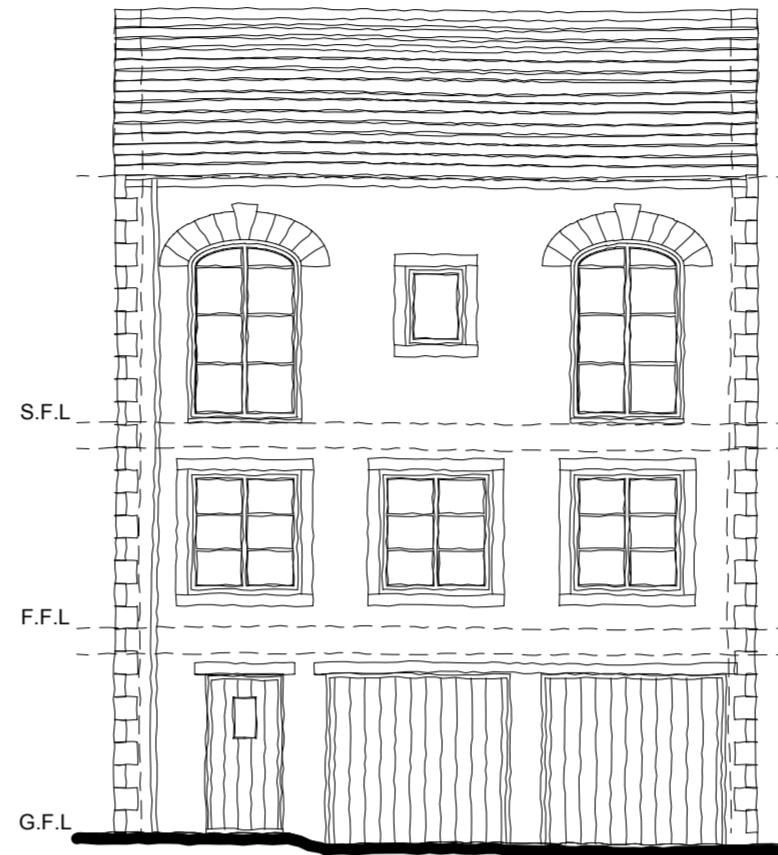
GROUND FLOOR PLAN
TYPE C - THE IRWELL
FLOOR AREA = 695.3 SQ.FT



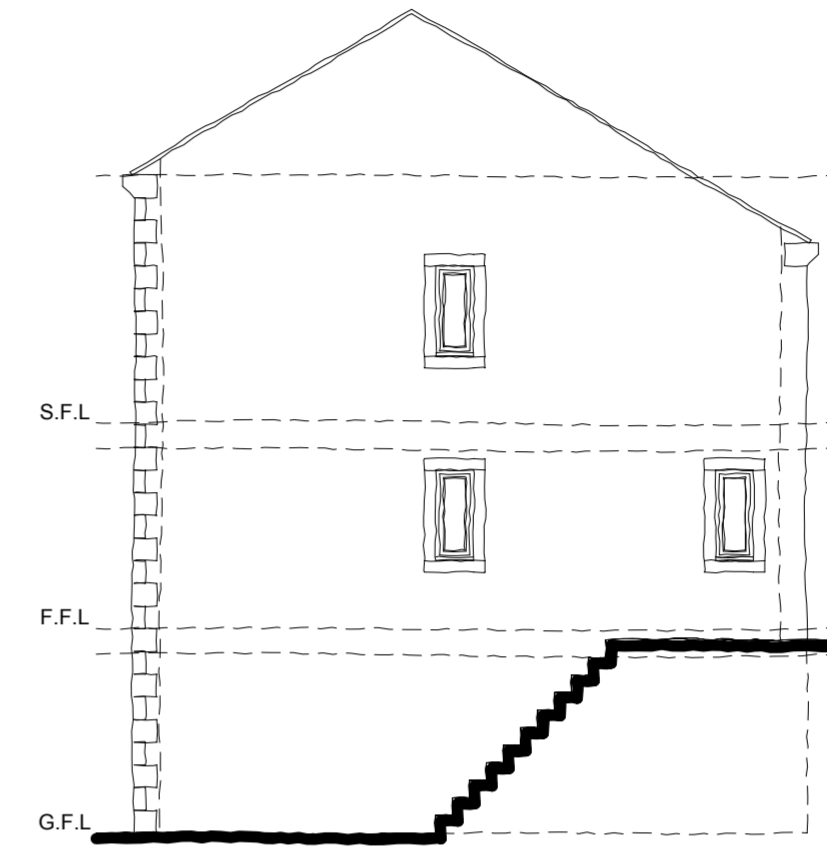
FIRST FLOOR FLOOR PLAN
TYPE C - THE IRWELL
FLOOR AREA = 695.3 SQ.FT



LOWER GROUND FLOOR PLAN
TYPE C - THE IRWELL
FLOOR AREA = 396.1 SQ.FT



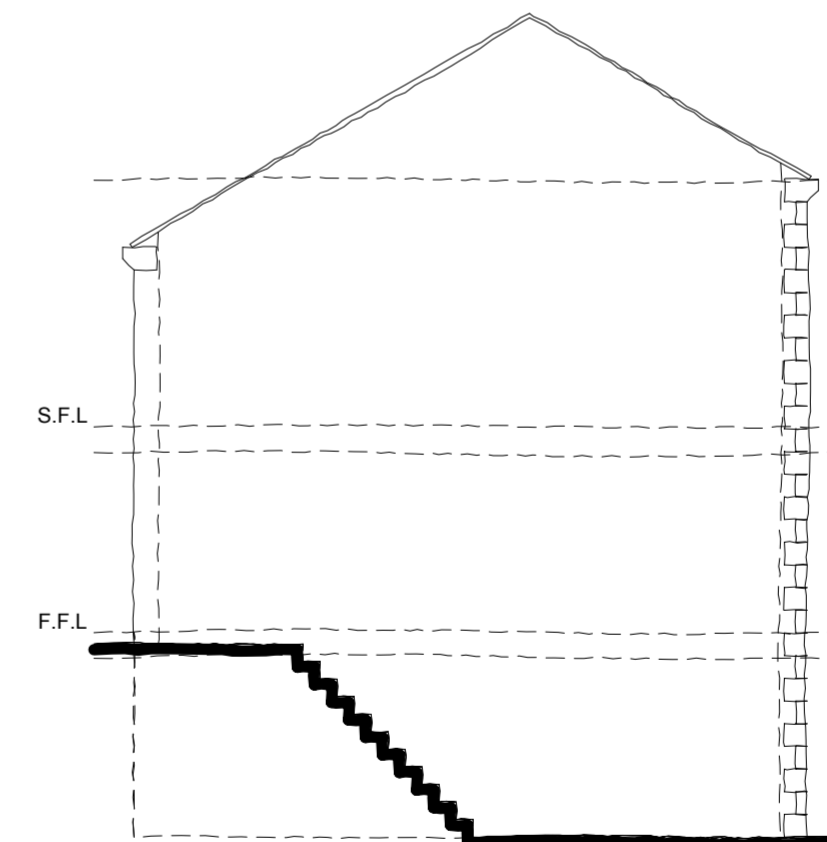
FRONT ELEVATION
HOUSE TYPE C - THE IRWELL
AS



SIDE ELEVATION
HOUSE TYPE C - THE IRWELL
AS



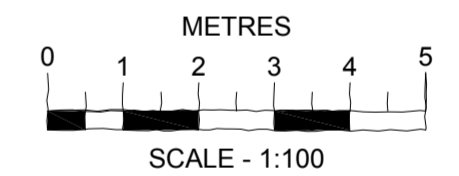
REAR ELEVATION
HOUSE TYPE C - THE IRWELL
AS



SIDE ELEVATION
HOUSE TYPE C - THE IRWELL
AS

EXTERNAL MATERIALS

EXTERNAL FACING MATERIAL - NATURAL STONE
ROOF - ARTIFICIAL STONE SLATE TILE.
WINDOWS - DARK GREY UPVC.
HEADS, CILLS & MULLIONS - CAST STONE
DOORS - BLACK UPVC & DARK GREY FRAMES.
SOFFITS AND FASCIAS - BLACK UPVC.
RAINWATER GOODS - BLACK UPVC.



PLANNING ISSUE

Project:
New Build Residential Development
Kearns Mill
Cowpe Road, Waterfoot

Client: Skipton Properties

Proposed House Type C - The Irwell - 4Bed Split level
Option 1
Total Floor Area = 1786.7 SQ.FT (Excluding Garage Area)

Job No:	Drawing No:	Revision:
3901-005	PL12	

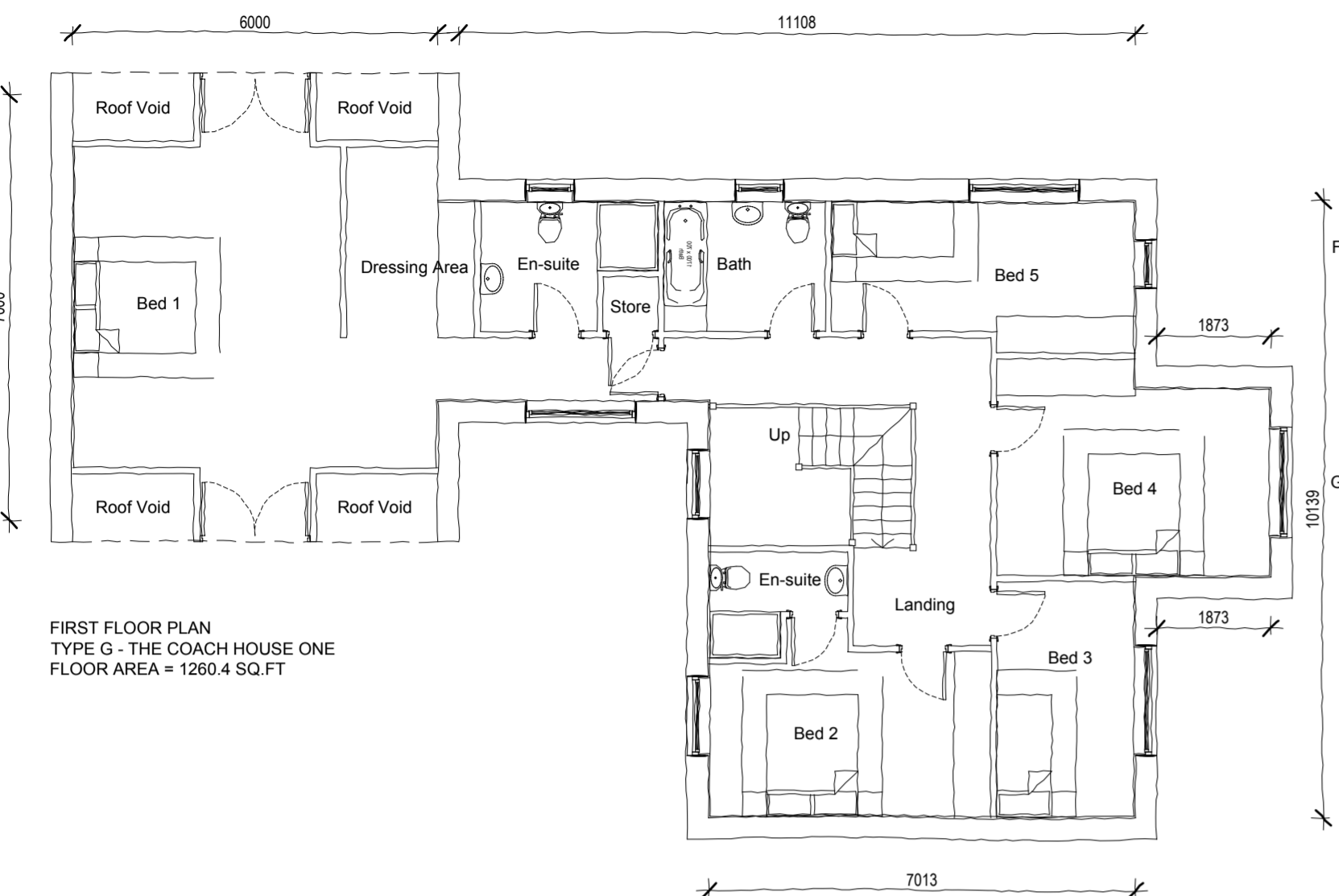
Date: 27/04/2012 Scale: 1:100 @ A2 Drawn: TES Checked: RPM
CAD Ref:

Note: Do not scale from this drawing. All dimensions to be checked on-site.

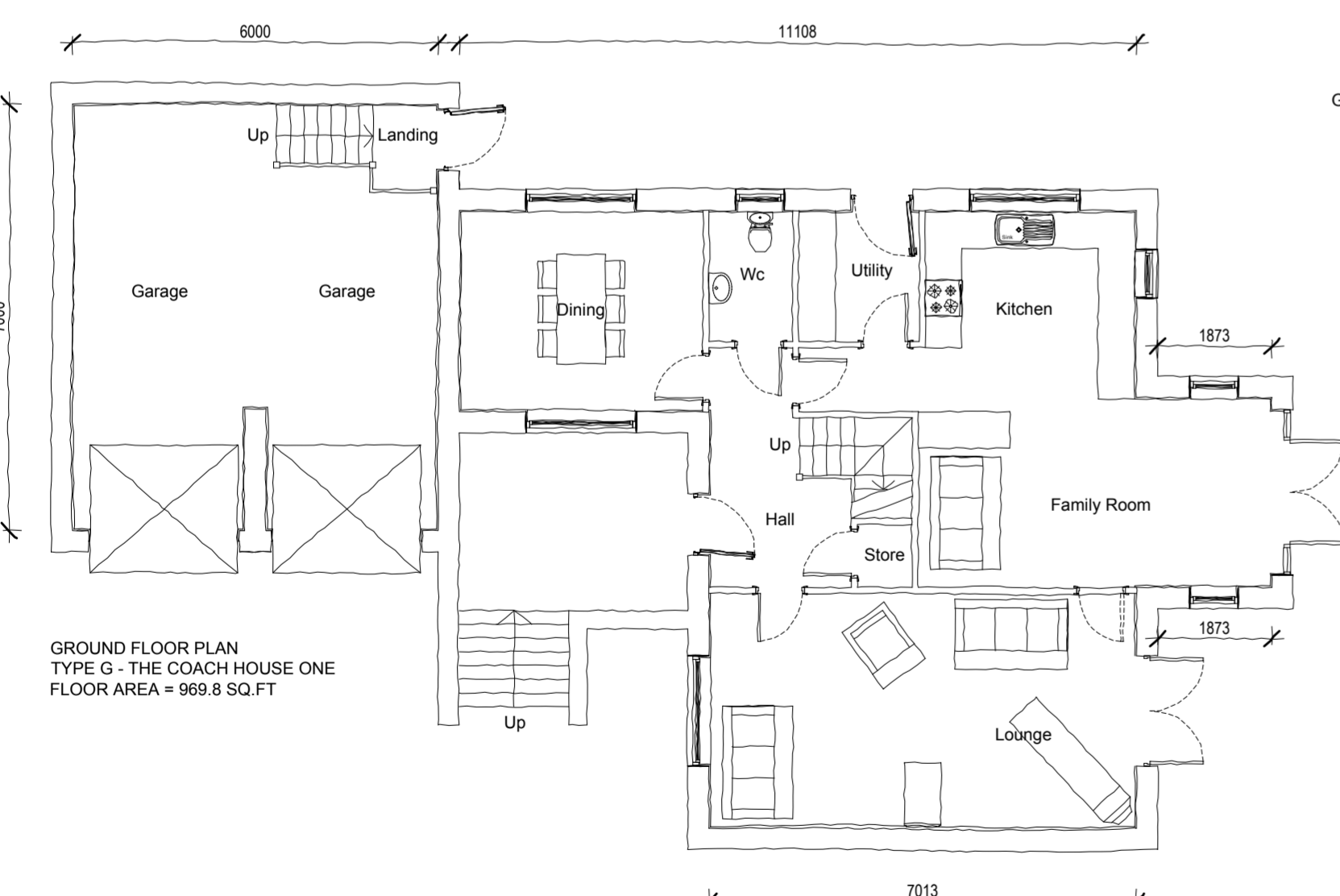
Watson Batty Architects Limited
Shires House, Shires Road
Guiseley, Leeds LS20 8EU
T: 01943 876 665
F: 01943 882 300
E: enquiries@watsonbatty.com
W: www.watsonbatty.com



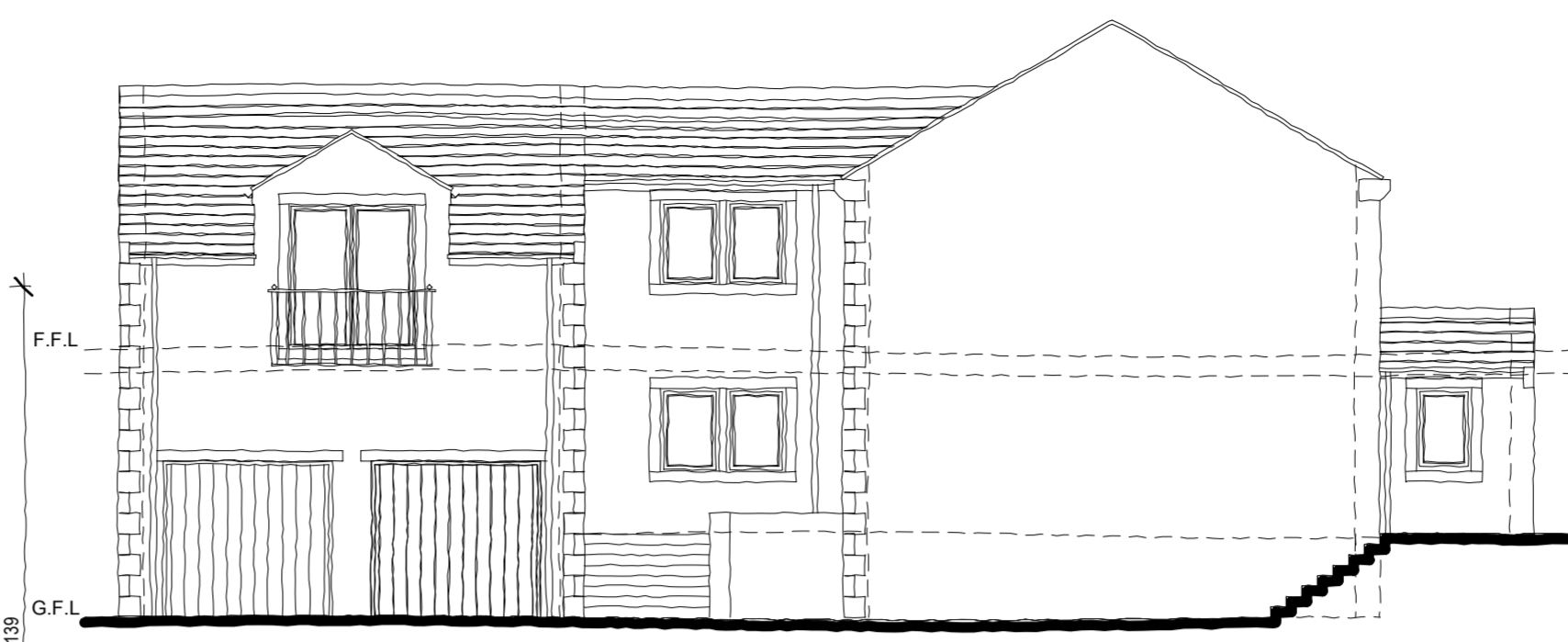
Copyright © Watson Batty Architects Limited



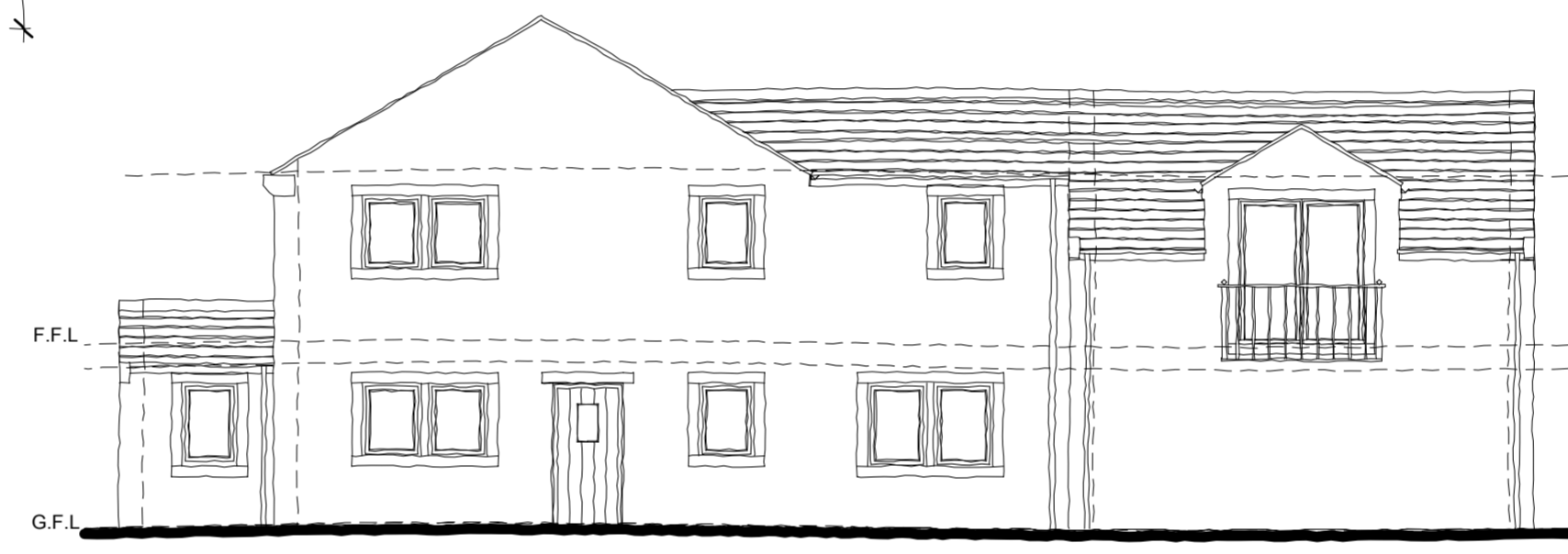
FIRST FLOOR PLAN
TYPE G - THE COACH HOUSE ONE
FLOOR AREA = 1260.4 SQ.FT



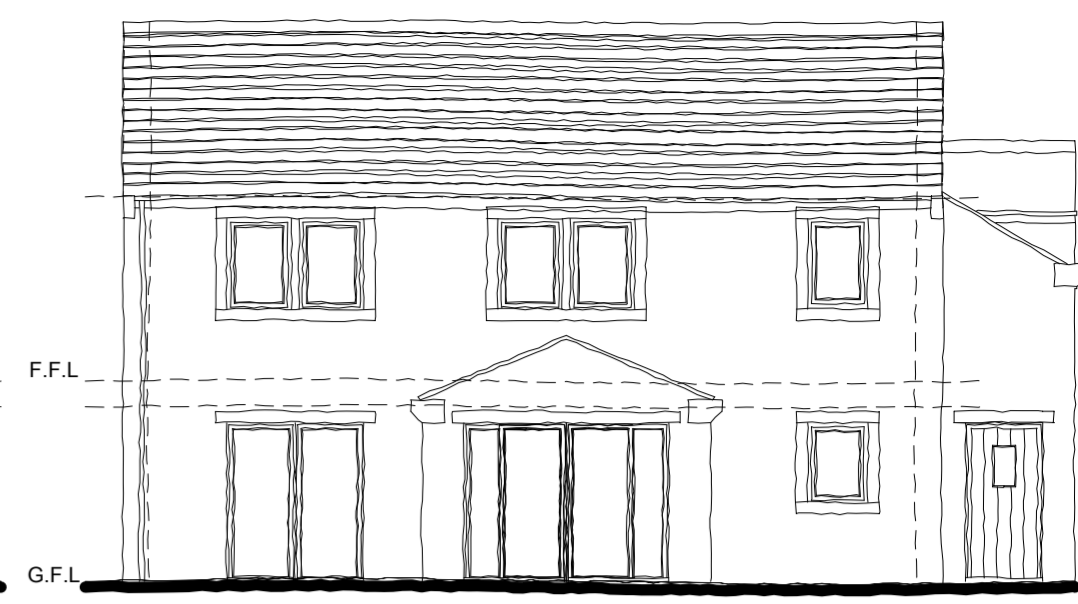
GROUND FLOOR PLAN
TYPE G - THE COACH HOUSE ONE
FLOOR AREA = 969.8 SQ.FT



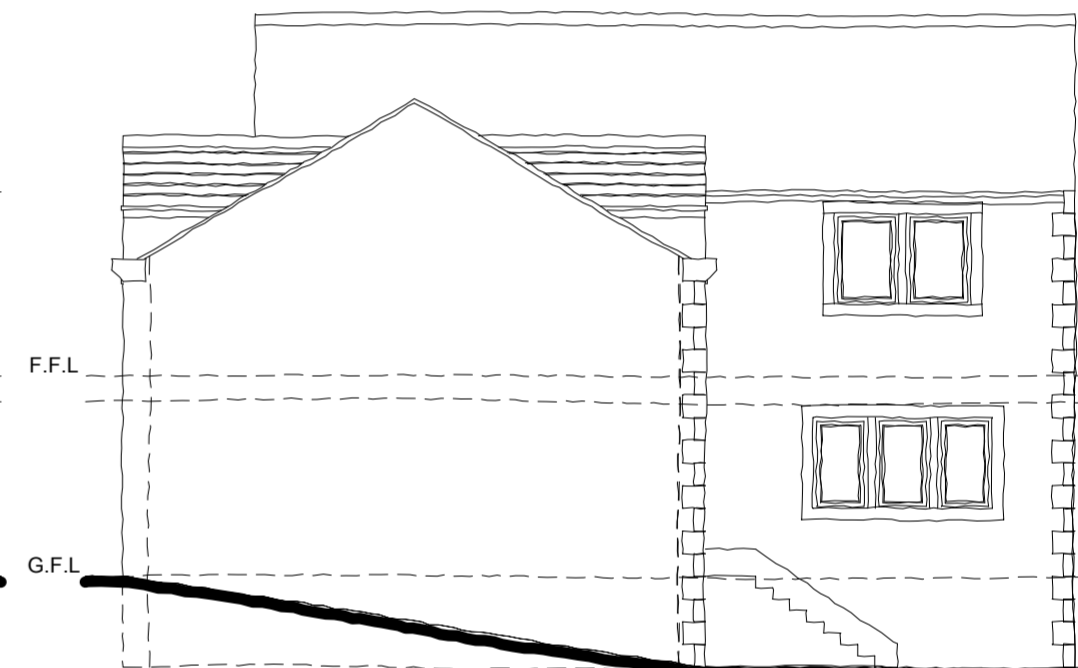
FRONT ELEVATION
HOUSE TYPE G - THE COACH HOUSE ONE
AS



REAR ELEVATION
HOUSE TYPE G - THE COACH HOUSE ONE
AS



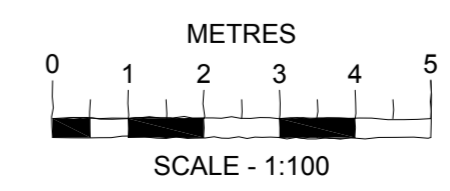
SIDE ELEVATION
HOUSE TYPE G - THE COACH HOUSE ONE
AS



SIDE ELEVATION
HOUSE TYPE G - THE COACH HOUSE ONE
AS

EXTERNAL MATERIALS

- EXTERNAL FACING MATERIAL - NATURAL STONE
- ROOF - ARTIFICIAL STONE SLATE TILE.
- WINDOWS - DARK GREY UPVC.
- HEADS, CILLS & MULLIONS - CAST STONE
- DOORS - BLACK UPVC & DARK GREY FRAMES.
- SOFFITS AND FASCIAS - BLACK UPVC.
- RAINWATER GOODS - BLACK UPVC.



PLANNING ISSUE

Project:
New Build Residential Development
Kearns Mill
Cowpe Road, Waterfoot

Client: Skipton Properties
Proposed House Type G 5Bed
The Coach House One - 5Bed - Option 1
Total Floor Area = 2230.2 SQ.FT (Excluding Garage Area)

Job No:	Drawing No:	Revision:
3901-005	PL16	

Date: 27/04/2012 Scale: 1:100 @ A2 Drawn: TES Checked: RPM
CAD Ref:

Note: Do not scale from this drawing. All dimensions to be checked on-site.

Watson Batty Architects Limited
Shires House, Shires Road
Guiseley, Leeds LS20 8EU
T: 01943 876 665
F: 01943 882 300
E: enquiries@watsonbatty.com
W: www.watsonbatty.com

WATSON BATTY architects
redefining space ■ delivering the vision

Copyright © Watson Batty Architects Limited