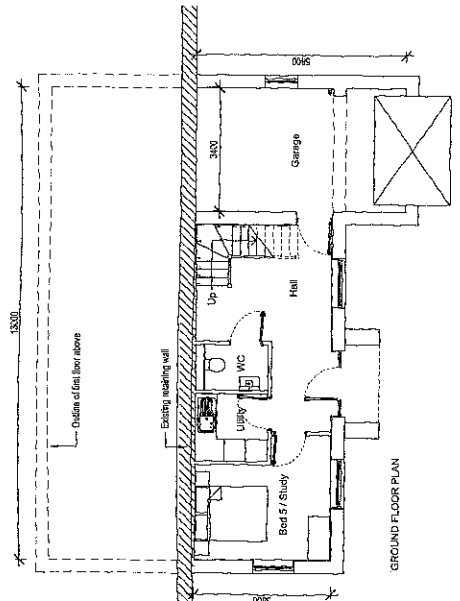
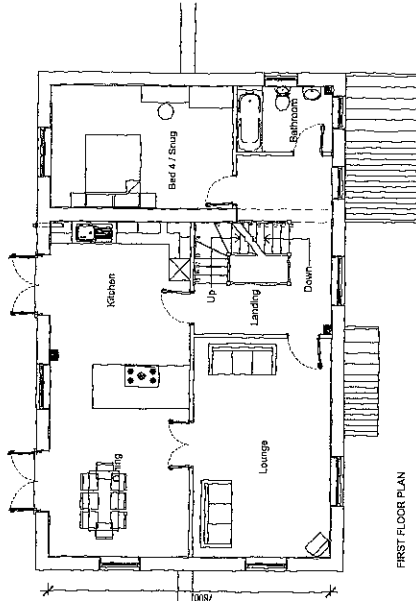
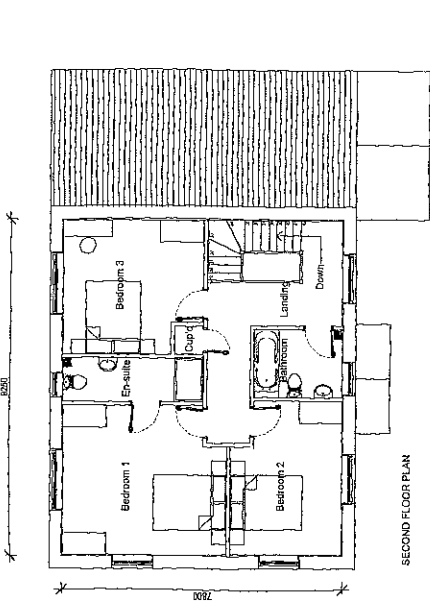
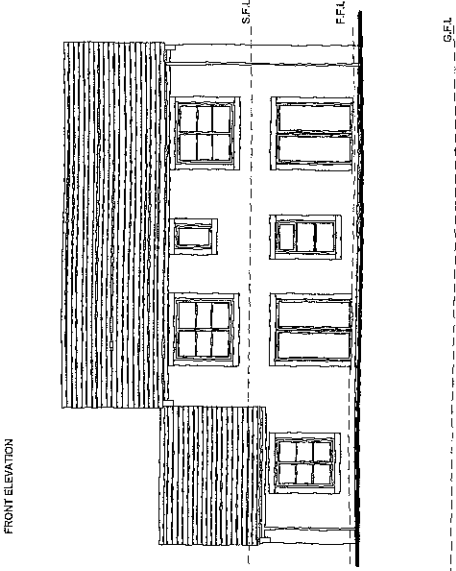
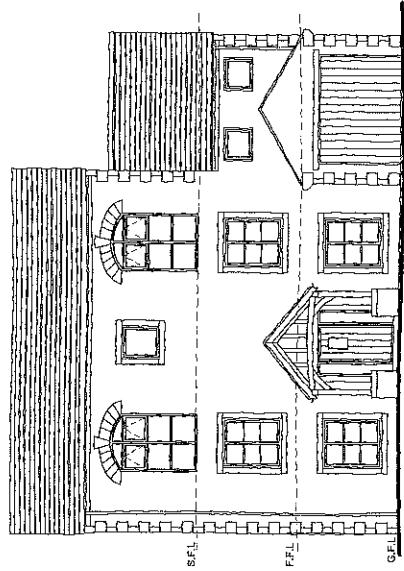
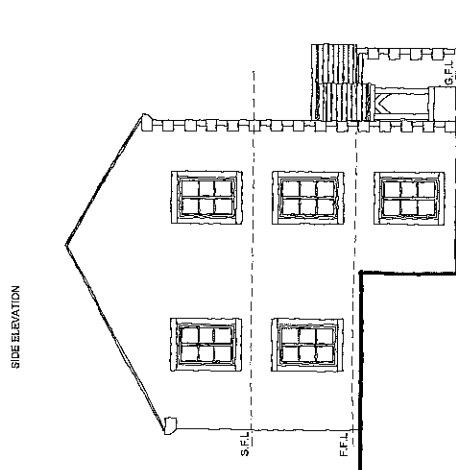
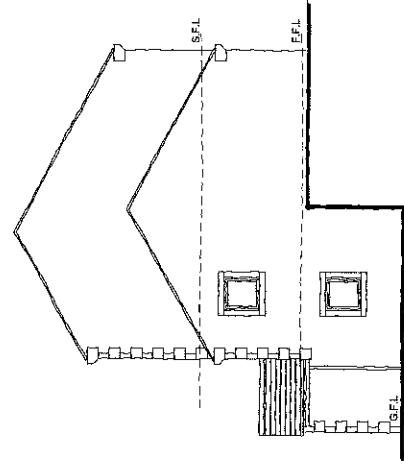
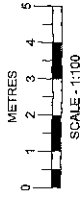


A	24.08.2017	WMB	RPM
Amended for Planning Resubmission			
PLANNING ISSUE			
New Build Residential Development Kearns Mill Cowpe Road, Waterfoot			
Skipton Properties			
Location Plan			
3901-005	PL02	A	
Date: 19/02/2013 Scale: 1:1250@A3 Drawn: TES Checked: RPM CAD Ref: P:\3901-005\CAD\			
Note: Do not scale from this drawing. All dimensions to be checked on-site.			
Watson Batty Architects Limited Shires House, Shires Road Guiseley, Leeds LS20 8EU T: 01943 876 665 F: 01943 882 300 E: enquiries@watsonbatty.com W: www.watsonbatty.com			
			<small>Copyright © Watson Batty Architects Limited</small>
redefining space delivering the vision			



PLANNING ISSUE

New Build Residential Development
House Type M - The Tyrell
5 Bed Split level

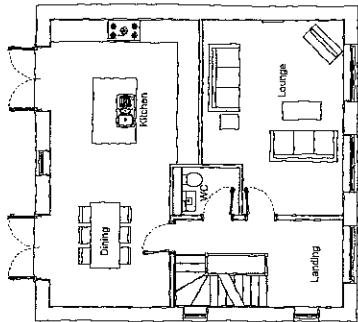
Location: Kearsy Hill, Curragh Road, Waterfoot
Site: Skipton Properties
3901-005
Planning Ref: PL23
Date: 11/09/2012



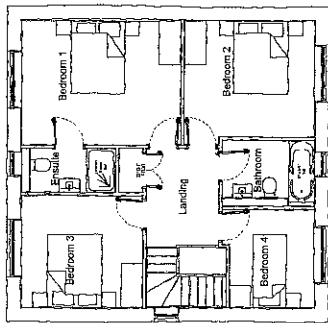
EXTERNAL MATERIALS
EXTERNAL FACING MATERIAL - NATURAL STONE
ROOF - ARTIFICIAL STONE SLATE TILE
WINDOWS - DARK GREY UPVC
HEADS, CILLS & MULLIONS - CAST STONE
DOORS - BLACK UPVC & DARK GREY FRAMES
SOFFITS AND FASCIAS - BLACK UPVC
RAINWATER GOODS - BLACK UPVC

Total Floor Area = 2219 SQ.FT
(Excluding Garage Area)

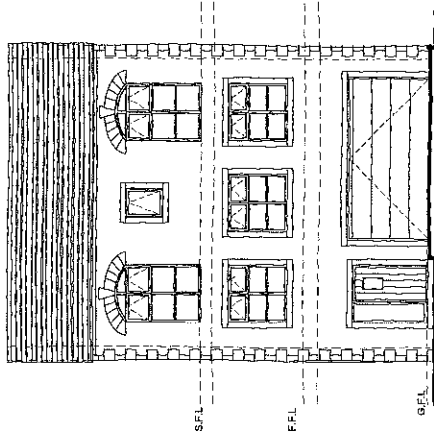
Note: Do not Scale from this drawing. All dimensions to be checked on site



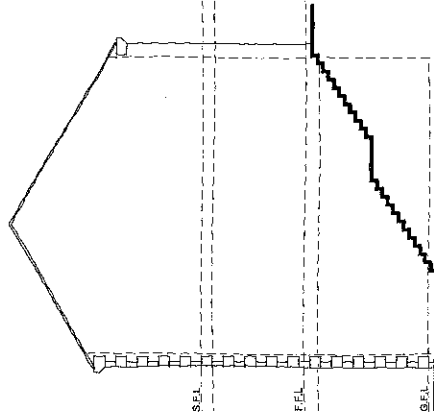
FIRST FLOOR PLAN
AS



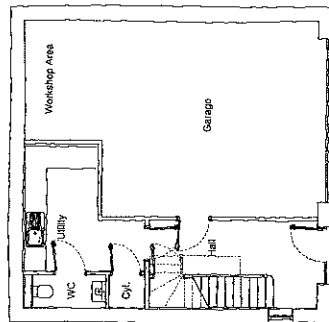
SECOND FLOOR PLAN
AS



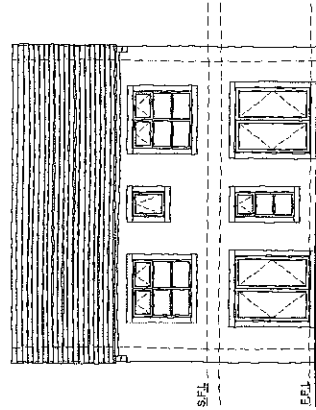
FRONT ELEVATION
HOUSE TYPE C - THE IRWELL
AS



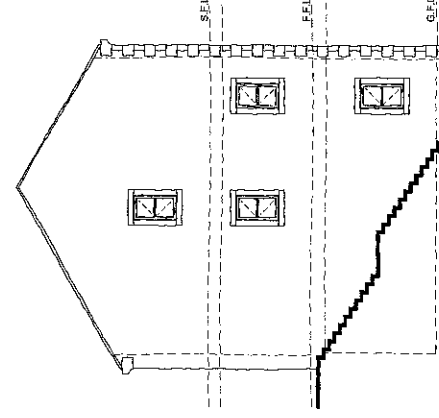
SIDE ELEVATION
HOUSE TYPE C - THE IRWELL
AS



GROUND FLOOR PLAN
AS



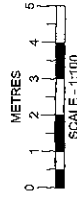
REAR ELEVATION
HOUSE TYPE C - THE IRWELL
AS



SIDE ELEVATION
HOUSE TYPE C - THE IRWELL
AS

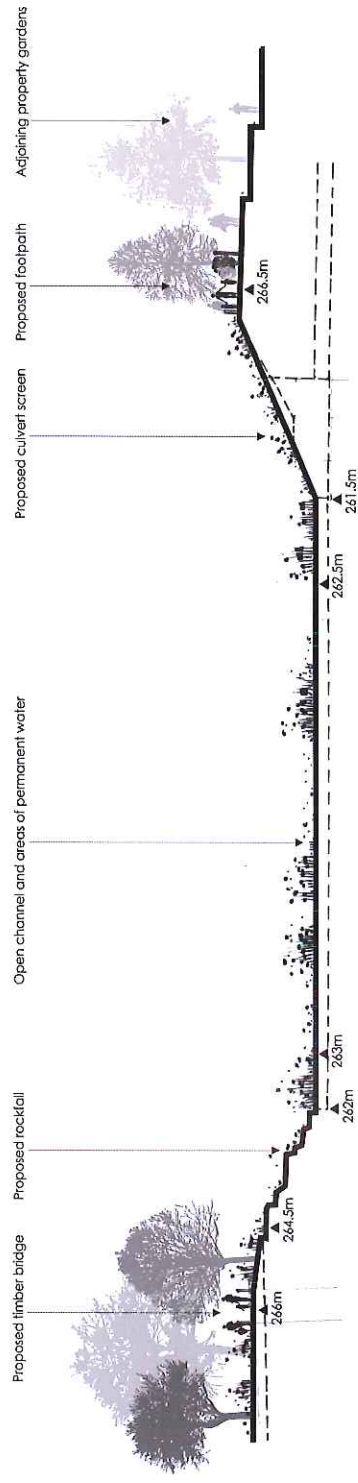
EXTERNAL MATERIALS

EXTERNAL FACING MATERIAL - NATURAL STONE
 ROOF - ARTIFICIAL STONE SLATE TILE
 WINDOWS - DARK GREY UPVC
 HEADS, CHILLS & MULLIONS - CAST STONE
 DOORS - BLACK UPVC & DARK GREY FRAMES
 SOFFITS AND FASCIAS - BLACK UPVC
 RAINWATER GOODS - BLACK UPVC

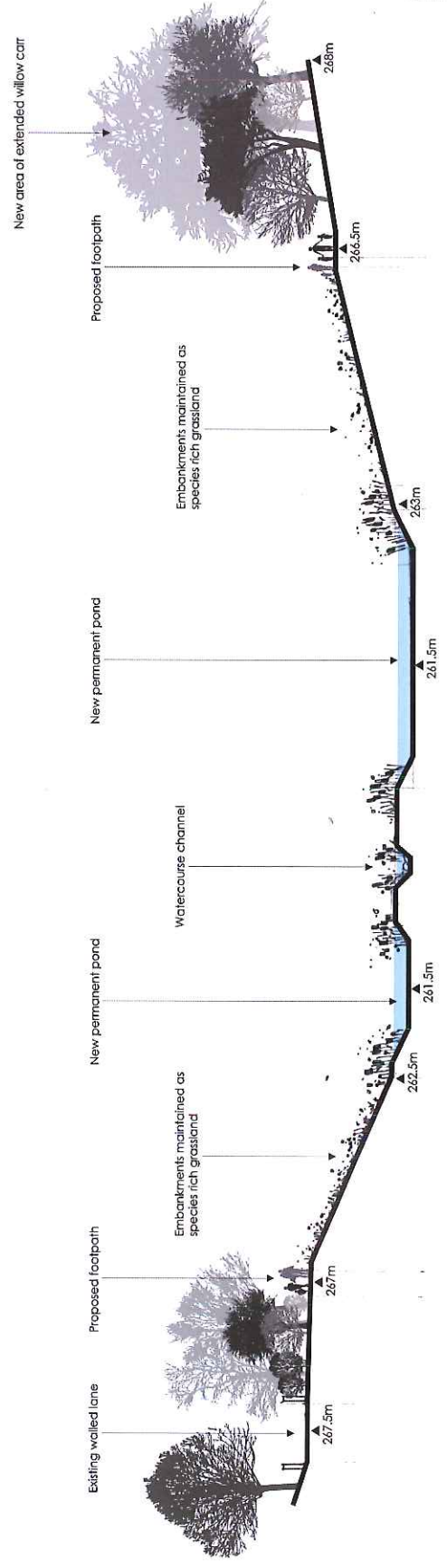


Revision: C	Date: 10.11.2018	Drawn: MWJ	Checked: RPK
Updated for Minor Amendment Application.			
Revision: B	Date: 18.08.16	Drawn: JAJ	Checked: TC
Lower ground floor layout altered to simplify structural design.			
Revision: A	Date: 10/07/15	Drawn: JWS	Checked: RPK
Layouts updated to suit client's comments			
PLANNING ISSUE			
Project: New Build Residential Development Kearns Mill Coyne Road, Waterfoot			
Client: Slighan Properties			
Proposed House Type C - The Irwell - 4-Bed Split Level Option 1			
Total Floor Area = 1541.4 SQ.FT (Excluding Garage Area)			
Job No:	3907-006	Drawing No:	PL12
Scale:		Revision:	C
Date: 27/04/2012 Issue: 1/19 @ V3 Drawn: TES Checked: RPK CAD File:			
Notes: Do not scale from this drawing. All dimensions to be checked on site.			
Watson Batty Architects Limited 65-67, The Quadrant, Goswary, Leam, CV32 8EU T: 01943 875 405 F: 01943 882 300 E: enquiries@watsonbatty.com W: www.watsonbatty.com			

WATSON
BATTY
Architects



Section A-A - Illustrating landform between the culvert screen and rockfall



Section B-B - Illustrating landform between the existing lane and retained/extended willow carr

For section locations please refer to drawing no. GL0472.06

Project	The Lodge, Kearns Mill
Issuing info	Mill Pond Illustrative Sections
Client	Skipiton Properties Ltd
Scale	1:200 or A2
Date	27/10/2017
Revision/Date	GL0472.07



