

This drawing is copyright and owned by Liberata Ltd, and is for use on this site only unless contractually stated otherwise.

DO NOT SCALE this drawing (printed or electronic versions). Contractors must check all dimensions from site.

All other design team elements, where indicated, have been imported from the consultant's drawings and reference should be made to the individual consultant's drawings for exact setting out, size and type of component.

Discrepancies and / or ambiguities within this drawing, between it and information given elsewhere, must be reported immediately to the architect for clarification before proceeding.

All works are to be carried out in accordance with the latest British Standards and Codes of Practice unless specifically directed otherwise in the specification.

Responsibility for the reproduction of this drawing in paper form, or if issued in electronic format, lies with the recipient to check that all information has been replicated in full and is correct when compared to the original paper or electronic image. Graphical representations of equipment on this drawing have been co-ordinated, but are approximations only. Please refer to the Specifications and / or Details for actual sizes and / or specific contractor construction information.

This original document is issued for the purpose indicated below and contains information of confidential nature. Further copies and circulation will be strictly in accordance with the confidentiality agreement under the contract. This original must be destroyed or returned to the contractor.

**SAFETY, HEALTH AND ENVIRONMENTAL INFORMATION**  
Refer to the relevant Construction (Design and Management) documentation where applicable.

It is assumed that all works on this drawing will be carried out by a competent contractor, working where appropriate to an approved method statement.



3D\_Rear Axo



3D\_Front Axo

|   |   |  |          |
|---|---|--|----------|
| P | 2 | Planning issue no revisions                                | 13.06.18 |
| P | 1 | Updates as instructed by Barnfield and issued for contract | 31.05.18 |
| P | 0 | Planning submission updates                                | 16.05.18 |

| Rev | Description / By / Chk'd / App'd | Date |
|-----|----------------------------------|------|
|-----|----------------------------------|------|

Purpose of Issue

Planning

Client

Barnfield Homes

Project

Proposed Residential Development At Rockcliffe Road Bacup

Drawing

House Type B3 Proposed Perspectives

| Scale @ A1 | Drawn | Checked | Approved |
|------------|-------|---------|----------|
|            | NM    | NM      | NSJ      |

| Project No. | Date     |
|-------------|----------|
| A1729       | 13.06.18 |

| Drawing Identifier              | revision |
|---------------------------------|----------|
| A1729-LIB-B3-A1 20-ZZ-LL-3D-002 | P2       |

**Liberata Architects**

No. 1 Market Street, Nelson, BB97LJ  
 T +44 (0) 1282 878787 F +44 (0) 1282 878993  
 www.liberata.com

Registered office: Liberata UK Limited, 1st Floor, 100 Wood Street, London EC2V 7AN (Registered in England and Wales - No 1238274)

This drawing is copyright and owned by Liberata Ltd. and is for use on this site only unless contractually stated otherwise.  
 DO NOT SCALE this drawing (printed or electronic versions). Contractors must check all dimensions from site.  
 All other design team elements, where indicated, have been imported from the consultant's drawings and reference should be made to the individual consultant's drawings for exact setting out, size and type of component.  
 Discrepancies and / or ambiguities within this drawing, between it and information given elsewhere, must be reported immediately to the architect for clarification before proceeding.  
 All works are to be carried out in accordance with the latest British Standards and Codes of Practice unless specifically directed otherwise in the specification.  
 Responsibility for the reproduction of this drawing in paper form, or if issued in electronic format, lies with the recipient to check that all information has been replicated in full and is correct when compared to the original paper or electronic image. Graphical representations of equipment on this drawing have been co-ordinated, but are approximations only. Please refer to the Specifications and / or Details for actual sizes and / or specific contractor construction information.  
 This original document is issued for the purpose indicated below and contains information of confidential nature. Further copies and circulation will be strictly in accordance with the confidentiality agreement under the contract. This original must be destroyed or returned to the contractor.  
**SAFETY, HEALTH AND ENVIRONMENTAL INFORMATION**  
 Refer to the relevant Construction (Design and Management) documentation where applicable.  
 It is assumed that all works on this drawing will be carried out by a competent contractor, working where appropriate to an approved method statement.



**Front Elevation**  
1 : 50

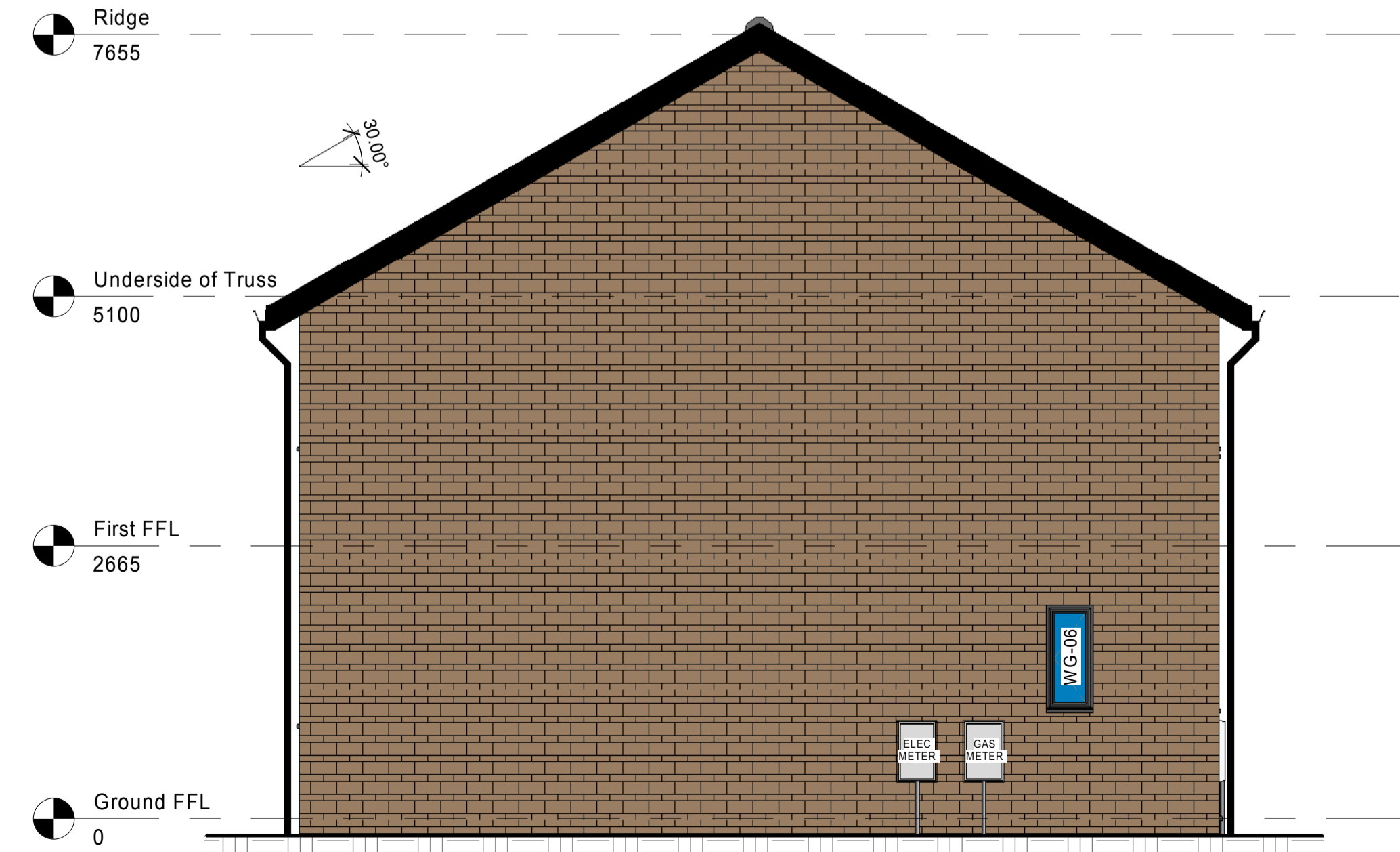
Ground level indicative only refer to Structural Engineers proposed levels for actual ground levels



**Rear Elevation**  
1 : 50



**Side Gable 1 Elevation**  
1 : 50



**Side Gable 2 Elevation**  
1 : 50

| Rev | Description / By / Chk'd / App'd                           | Date     |
|-----|--|----------|
| P 3 | Planning issue no revisions                                | 13.06.18 |
| P 2 | Updates as instructed by Barnfield and issued for contract | 31.05.18 |
| P 1 | External blocks clarified                                  | 30.05.18 |
| P 0 | Planning submission updates                                | 16.05.18 |

Rev Description / By / Chk'd / App'd Date  
**Planning**  
 Client  
**Barnfield Homes**

Project  
**Proposed Residential Development At Rockcliffe Road Bacup**

Drawing  
**House Type B3 Proposed Elevations**

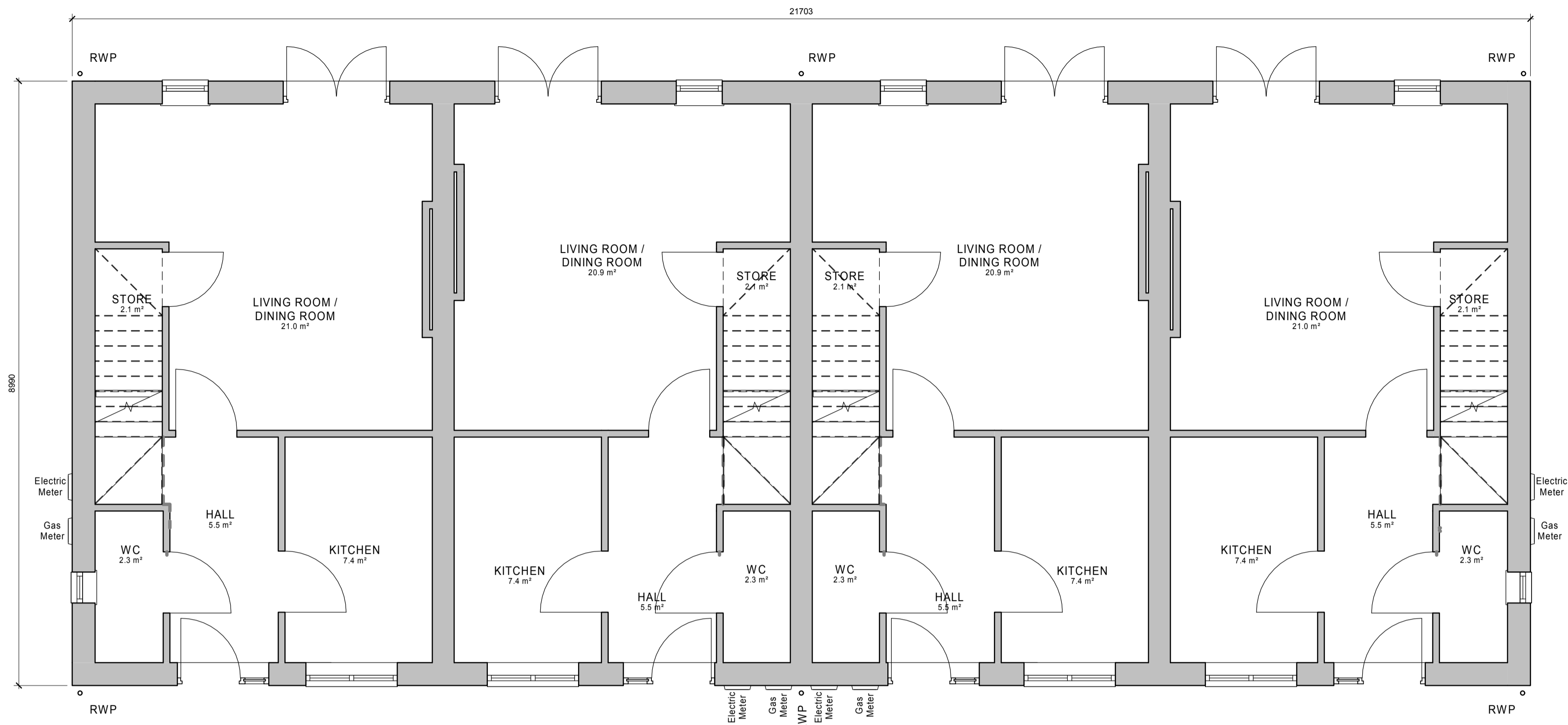
| Scale @ A1 | Drawn | Checked | Approved |
|------------|-------|---------|----------|
| 1 : 50     | NM    | NM      | NSJ      |

Project No. **A1729** Date **13.06.18**

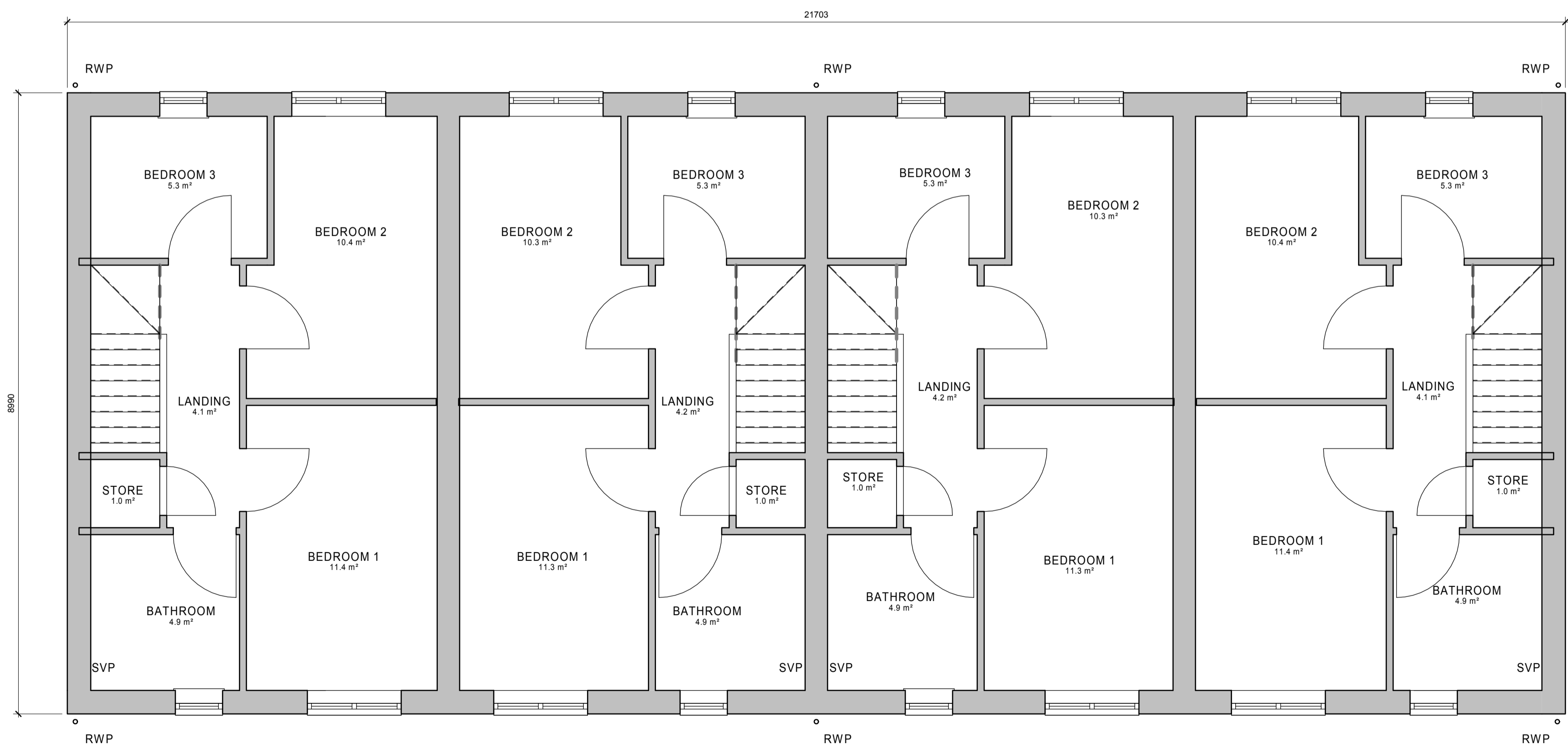
Drawing Identifier  
 project origin building model class zone level type number revision  
**A1729-LIB-B3-A1 20-ZZ-LL-E2-002 P3**

**Liberata Architects**  
 No. 1 Market Street, Nelson, BB97LJ  
 T +44 (0) 1282 878787 F +44 (0) 1282 878993  
 www.liberata.com  
 Registered office: Liberata UK Limited, 1st Floor, 100 Wood Street, London EC2V 7AN (Registered in England and Wales - No 1238274)

This drawing is copyright and owned by Liberata Ltd. and is for use on this site only unless contractually stated otherwise.  
 DO NOT SCALE this drawing (printed or electronic versions). Contractors must check all dimensions from site.  
 All other design team elements, where indicated, have been imported from the consultant's drawings and reference should be made to the individual consultant's drawings for exact setting out, size and type of component.  
 Discrepancies and / or ambiguities within this drawing, between it and information given elsewhere, must be reported immediately to the architect for clarification before proceeding.  
 All works are to be carried out in accordance with the latest British Standards and Codes of Practice unless specifically directed otherwise in the specification.  
 Responsibility for the reproduction of this drawing in paper form, or if issued in electronic format, lies with the recipient to check that all information has been replicated in full and is correct when compared to the original paper or electronic image. Graphical representations of equipment on this drawing have been co-ordinated, but are approximations only. Please refer to the Specifications and / or Details for actual sizes and / or specific contractor construction information.  
 This original document is issued for the purpose indicated below and contains information of confidential nature. Further copies and circulation will be strictly in accordance with the confidentiality agreement under the contract. This original must be destroyed or returned to the contractor.  
**SAFETY, HEALTH AND ENVIRONMENTAL INFORMATION**  
 Refer to the relevant Construction (Design and Management) documentation where applicable.  
 It is assumed that all works on this drawing will be carried out by a competent contractor, working where appropriate to an approved method statement.



1 Proposed Ground Floor GA Plan  
1 : 50



2 Proposed First Floor GA Plan  
1 : 50

|     |                             |          |
|-----|-----------------------------|----------|
| P 2 | Planning issue no revisions | 13.06.18 |
| P 1 | Issued for contract         | 31.05.18 |
| P 0 | Planning submission updates | 16.05.18 |

| Rev | Description / By / Chk'd / App'd | Date |
|-----|----------------------------------|------|
|-----|----------------------------------|------|

Purpose of Issue  
**Planning**  
 Client  
**Barnfield Homes**

Project  
**Proposed Residential Development At Rockcliffe Road Bacup**

Drawing  
**House Type B3 Proposed GA Plans**

|            |       |         |          |
|------------|-------|---------|----------|
| Scale @ A1 | Drawn | Checked | Approved |
| 1 : 50     | NM    | NM      | NSJ      |

|             |          |
|-------------|----------|
| Project No. | Date     |
| A1729       | 13.06.18 |

|                    |                 |        |          |       |       |      |       |      |        |          |
|--------------------|-----------------|--------|----------|-------|-------|------|-------|------|--------|----------|
| Drawing Identifier | project         | origin | building | model | class | zone | level | type | number | revision |
| A1729-LIB-B3-A1    | 20-ZZ-LL-P2-002 |        |          |       |       |      |       |      |        | P2       |

**Liberata Architects**  
 No. 1 Market Street, Nelson, BB97LJ  
 T +44 (0) 1282 878787 F +44 (0) 1282 878993  
 www.liberata.com  
 Registered office: Liberata UK Limited, 1st Floor, 100 Wood Street, London EC2V 7AN (Registered in England and Wales - No 1238274).

This drawing is copyright and owned by Liberata Ltd. and is for use on this site only unless contractually stated otherwise.

DO NOT SCALE this drawing (printed or electronic versions). Contractors must check all dimensions from site.

All other design team elements, where indicated, have been imported from the consultant's drawings and reference should be made to the individual consultant's drawings for exact setting out, size and type of component.

Discrepancies and / or ambiguities within this drawing, between it and information given elsewhere, must be reported immediately to the architect for clarification before proceeding.

All works are to be carried out in accordance with the latest British Standards and Codes of Practice unless specifically directed otherwise in the specification.

Responsibility for the reproduction of this drawing in paper form, or if issued in electronic format, lies with the recipient to check that all information has been replicated in full and is correct when compared to the original paper or electronic image. Graphical representations of equipment on this drawing have been co-ordinated, but are approximations only. Please refer to the Specifications and / or Details for actual sizes and / or specific contractor construction information.

This original document is issued for the purpose indicated below and contains information of confidential nature. Further copies and circulation will be strictly in accordance with the confidentiality agreement under the contract. This original must be destroyed or returned to the contractor.

**SAFETY, HEALTH AND ENVIRONMENTAL INFORMATION**  
Refer to the relevant Construction (Design and Management) documentation where applicable.

It is assumed that all works on this drawing will be carried out by a competent contractor, working where appropriate to an approved method statement.



3D\_Rear Axo



3D\_Front Axo

|   |   |  |          |
|---|---|--|----------|
| P | 2 | Planning issue no revisions                                | 13.06.18 |
| P | 1 | Updates as instructed by Barnfield and issued for contract | 31.05.18 |
| P | 0 | Planning submission updates to match House type B2         | 16.05.18 |

| Rev | Description / By / Chk'd / App'd | Date |
|-----|----------------------------------|------|
|-----|----------------------------------|------|

Purpose of Issue  
**Planning**

Client  
**Barnfield Homes**

Project  
**Proposed Residential Development At Rockcliffe Road Bacup**

Drawing  
**House Type B4 Proposed Perspectives**

|            |             |               |                 |
|------------|-------------|---------------|-----------------|
| Scale @ A1 | Drawn<br>NM | Checked<br>NM | Approved<br>NSJ |
|------------|-------------|---------------|-----------------|

|                             |                         |
|-----------------------------|-------------------------|
| Project No.<br><b>A1729</b> | Date<br><b>13.06.18</b> |
|-----------------------------|-------------------------|

|  |
|--|
| Drawing Identifier<br>project origin building model class zone level type number revision<br><b>A1729-LIB-B4-A1 20-ZZ-LL-3D-001 P2</b> |
|--|

**Liberata Architects**  
No. 1 Market Street, Nelson, BB97LJ  
T +44 (0) 1282 878787 F +44 (0) 1282 878993  
www.liberata.com  
Registered office: Liberata UK Limited, 1st Floor, 100 Wood Street, London EC2V 7AN (Registered in England and Wales - No 1238274)

This drawing is copyright and owned by Liberata Ltd. and is for use on this site only unless contractually stated otherwise.  
 DO NOT SCALE this drawing (printed or electronic versions). Contractors must check all dimensions from site.  
 All other design team elements, where indicated, have been imported from the consultant's drawings and reference should be made to the individual consultant's drawings for exact setting out, size and type of component.  
 Discrepancies and / or ambiguities within this drawing, between it and information given elsewhere, must be reported immediately to the architect for clarification before proceeding.  
 All works are to be carried out in accordance with the latest British Standards and Codes of Practice unless specifically directed otherwise in the specification.  
 Responsibility for the reproduction of this drawing in paper form, or if issued in electronic format, lies with the recipient to check that all information has been replicated in full and is correct when compared to the original paper or electronic image. Graphical representations of equipment on this drawing have been co-ordinated, but are approximations only. Please refer to the Specifications and / or Details for actual sizes and / or specific contractor construction information.  
 This original document is issued for the purpose indicated below and contains information of confidential nature. Further copies and circulation will be strictly in accordance with the confidentiality agreement under the contract. This original must be destroyed or returned to the contractor.  
**SAFETY, HEALTH AND ENVIRONMENTAL INFORMATION**  
 Refer to the relevant Construction (Design and Management) documentation where applicable.  
 It is assumed that all works on this drawing will be carried out by a competent contractor, working where appropriate to an approved method statement.



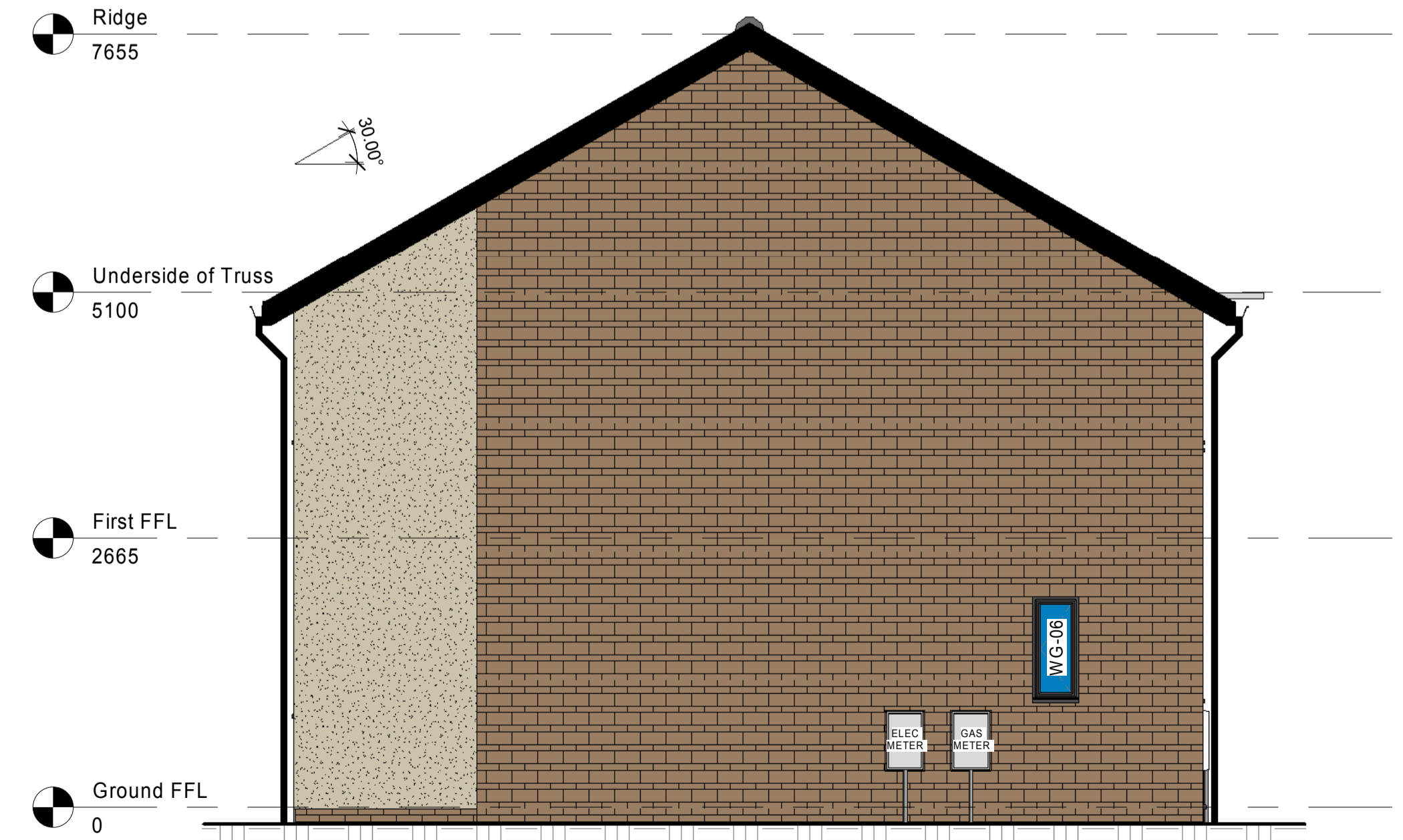
**Front Elevation**  
1 : 50



**Rear Elevation**  
1 : 50



**Side Gable 1 Elevation**  
1 : 50



**Side Gable 2 Elevation**  
1 : 50

|     |  |          |
|-----|--|----------|
| P 3 | Planning issue no revisions                                | 13.06.18 |
| P 2 | Updates as instructed by Barnfield and issued for contract | 31.05.18 |
| P 1 | External blocks clarified                                  | 30.05.18 |
| P 0 | Planning submission updates to match House type B2         | 16.05.18 |

| Rev | Description / By / Chk'd / App'd | Date |
|-----|----------------------------------|------|
|-----|----------------------------------|------|

Purpose of Issue  
**Planning**  
 Client  
**Barnfield Homes**

Project  
**Proposed Residential Development At Rockcliffe Road Bacup**

Drawing  
**House Type B4 Proposed Elevations**

|            |       |         |          |
|------------|-------|---------|----------|
| Scale @ A1 | Drawn | Checked | Approved |
| 1 : 50     | NM    | NM      | NSJ      |

|             |          |
|-------------|----------|
| Project No. | Date     |
| A1729       | 13.06.18 |

|                    |                 |        |          |       |       |      |       |       |      |        |          |
|--------------------|-----------------|--------|----------|-------|-------|------|-------|-------|------|--------|----------|
| Drawing Identifier | Project         | Origin | Building | Model | Class | Zone | Class | Level | Type | Number | Revision |
| A1729-LIB-B4-A1    | 20-ZZ-LL-E2-001 |        |          |       |       |      |       |       |      |        | P3       |

**Liberata Architects**  
 No. 1 Market Street, Nelson, BB97LJ  
 T +44 (0) 1282 878787 F +44 (0) 1282 878993  
 www.liberata.com  
 Registered office: Liberata UK Limited, 1st Floor, 100 Wood Street, London EC2V 7AN (Registered in England and Wales - No 1238274)

This drawing is copyright and owned by Liberata Ltd. and is for use on this site only unless contractually stated otherwise.

DO NOT SCALE this drawing (printed or electronic versions). Contractors must check all dimensions from site.

All other design team elements, where indicated, have been imported from the consultant's drawings and reference should be made to the individual consultant's drawings for exact setting out, size and type of component.

Discrepancies and / or ambiguities within this drawing, between it and information given elsewhere, must be reported immediately to the architect for clarification before proceeding.

All works are to be carried out in accordance with the latest British Standards and Codes of Practice unless specifically directed otherwise in the specification.

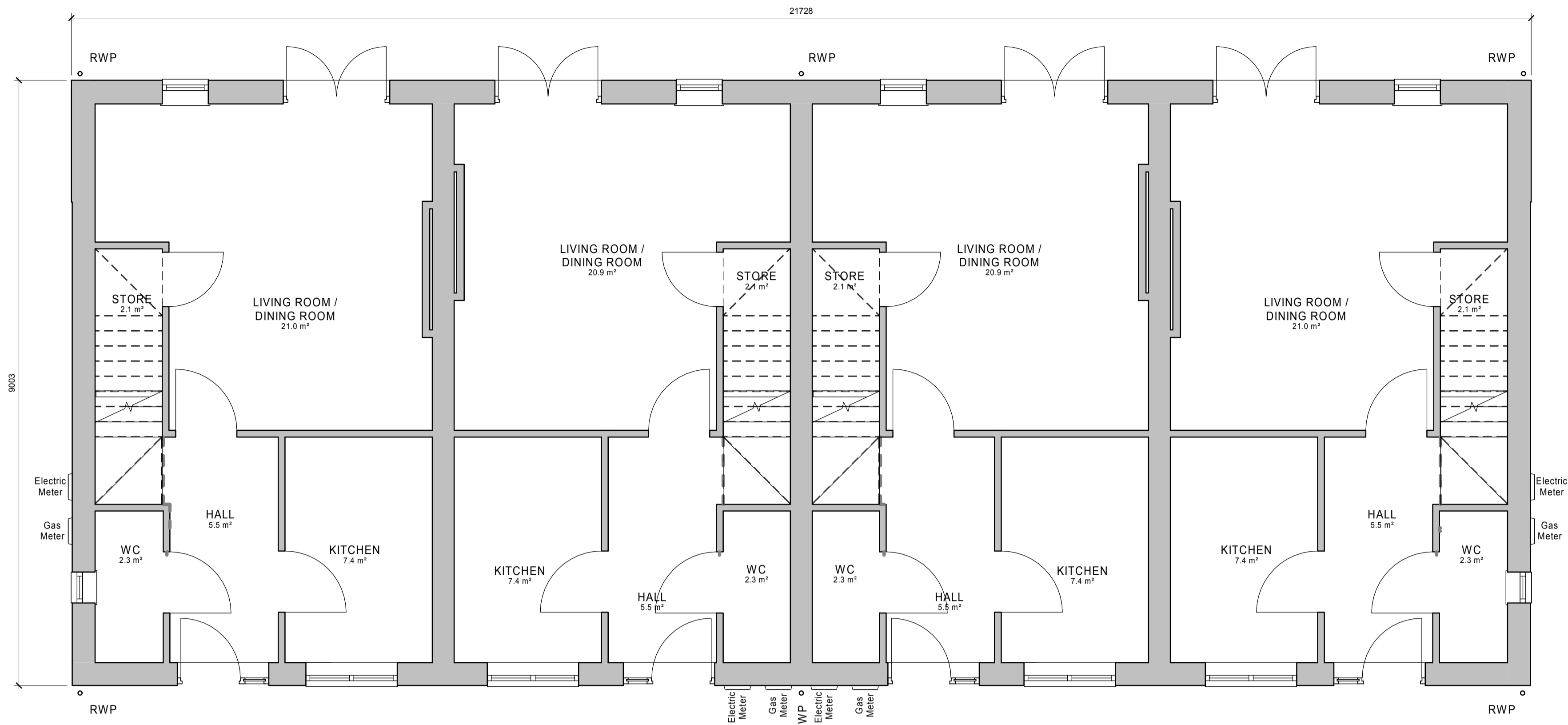
Responsibility for the reproduction of this drawing in paper form, or if issued in electronic format, lies with the recipient to check that all information has been replicated in full and is correct when compared to the original paper or electronic image. Graphical representations of equipment on this drawing have been co-ordinated, but are approximations only. Please refer to the Specifications and / or Details for actual sizes and / or specific contractor construction information.

This original document is issued for the purpose indicated below and contains information of confidential nature. Further copies and circulation will be strictly in accordance with the confidentiality agreement under the contract. This original must be destroyed or returned to the contractor.

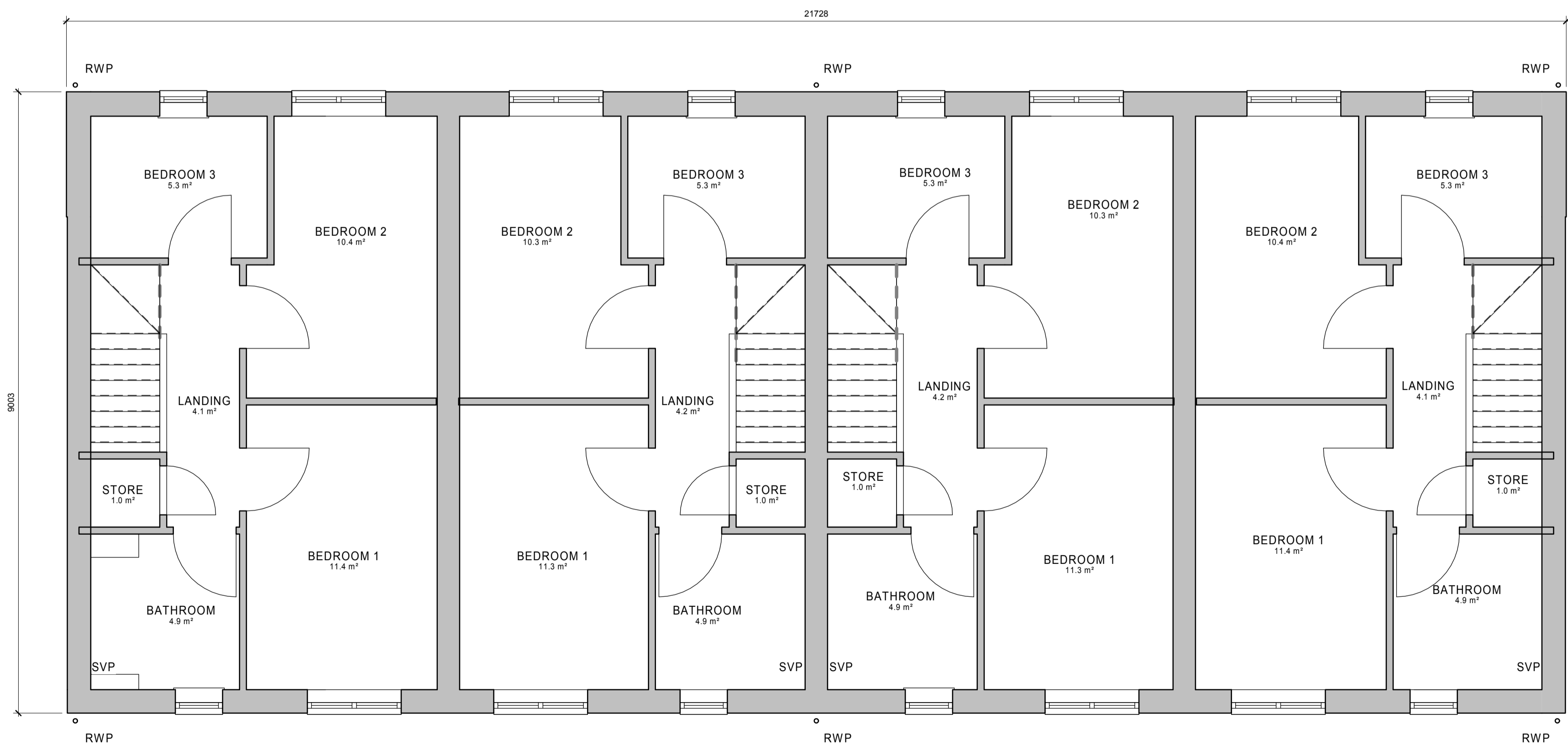
**SAFETY, HEALTH AND ENVIRONMENTAL INFORMATION**

Refer to the relevant Construction (Design and Management) documentation where applicable.

It is assumed that all works on this drawing will be carried out by a competent contractor, working where appropriate to an approved method statement.



**1 Proposed Ground Floor GA Plan**  
1 : 50



**2 Proposed First Floor GA Plan**  
1 : 50

|     |  |          |
|-----|--|----------|
| P 2 | Planning issue no revisions                        | 13.06.18 |
| P 1 | Issued for contract                                | 31.05.18 |
| P 0 | Planning submission updates to match House type B2 | 16.05.18 |

| Rev | Description / By / Chk'd / App'd | Date |
|-----|----------------------------------|------|
|-----|----------------------------------|------|

Purpose of Issue  
**Planning**

Client  
**Barnfield Homes**

Project  
**Proposed Residential Development At Rockcliffe Road Bacup**

Drawing  
**House Type B4 Proposed GA Plans**

|            |       |         |          |
|------------|-------|---------|----------|
| Scale @ A1 | Drawn | Checked | Approved |
| 1 : 50     | NM    | NM      | NSJ      |

|             |          |
|-------------|----------|
| Project No. | Date     |
| A1729       | 13.06.18 |

|                    |                 |        |          |       |       |      |       |      |        |          |
|--------------------|-----------------|--------|----------|-------|-------|------|-------|------|--------|----------|
| Drawing Identifier | project         | origin | building | model | class | zone | level | type | number | revision |
| A1729-LIB-B4-A1    | 20-ZZ-LL-P2-001 |        |          |       |       |      |       |      |        | P2       |

**Liberata Architects**

No. 1 Market Street, Nelson, BB97LJ  
T +44 (0) 1282 878787 F +44 (0) 1282 878993  
www.liberata.com

Registered office: Liberata UK Limited, 1st Floor, 100 Wood Street, London EC2V 7AN (Registered in England and Wales - No 1238274).

This drawing is copyright and owned by Liberata Ltd. and is for use on this site only unless contractually stated otherwise.  
 DO NOT SCALE this drawing (printed or electronic versions). Contractors must check all dimensions from site.  
 All other design team elements, where indicated, have been imported from the consultant's drawings and reference should be made to the individual consultant's drawings for exact setting out, size and type of component.  
 Discrepancies and / or ambiguities within this drawing, between it and information given elsewhere, must be reported immediately to the architect for clarification before proceeding.  
 All works are to be carried out in accordance with the latest British Standards and Codes of Practice unless specifically directed otherwise in the specification.  
 Responsibility for the reproduction of this drawing in paper form, or if issued in electronic format, lies with the recipient to check that all information has been replicated in full and is correct when compared to the original paper or electronic image. Graphical representations of equipment on this drawing have been co-ordinated, but are approximations only. Please refer to the Specifications and / or Details for actual sizes and / or specific contractor construction information.

This original document is issued for the purpose indicated below and contains information of confidential nature. Further copies and circulation will be strictly in accordance with the confidentiality agreement under the contract. This original must be destroyed or returned to the contractor.

**SAFETY, HEALTH AND ENVIRONMENTAL INFORMATION**  
 Refer to the relevant Construction (Design and Management) documentation where applicable.  
 It is assumed that all works on this drawing will be carried out by a competent contractor, working where appropriate to an approved method statement.

- Existing levels from topographical survey by others
- Property boundary lines to properties indicated are inner face of retaining wall/ outer cladding or centre line where shared
- Existing roads, housing and boundaries not included in topographical survey, positions
- Indicative levels included, refer to Engineers drawings for full level information

| Rev | Description / By / Chk'd / App'd   | Date       |
|-----|--|------------|
| P 9 | Planning issue full paving added   | 13.06.2018 |
| P 8 | Issued for Contract  | 31.05.2018 |
| P 7 | Property boundaries added. Proposed site topography included from engineers drawing                | 30.05.2018 |
| P 6 | Rev numbers updated. Civils information added. Hazard items omitted                                | 17.05.2018 |
| P 5 | new topographical survey imported and housing types and positions adjusted for civils coordination | 01.05.2018 |
| P 4 | Pavement omitted to one side of road - PROW route updated  | 22.03.2018 |
| P 3 | Boundary Line Amended  | 31.01.2018 |
| P 2 | Planning Submission  | 19.01.2018 |
| P 1 | Issued for Discussion  | 08.01.2018 |

Rev Description / By / Chk'd / App'd Date

Purpose of Issue  
**Planning**

Client  
**Barnfield Homes**

Project  
**Rockliffe Road**

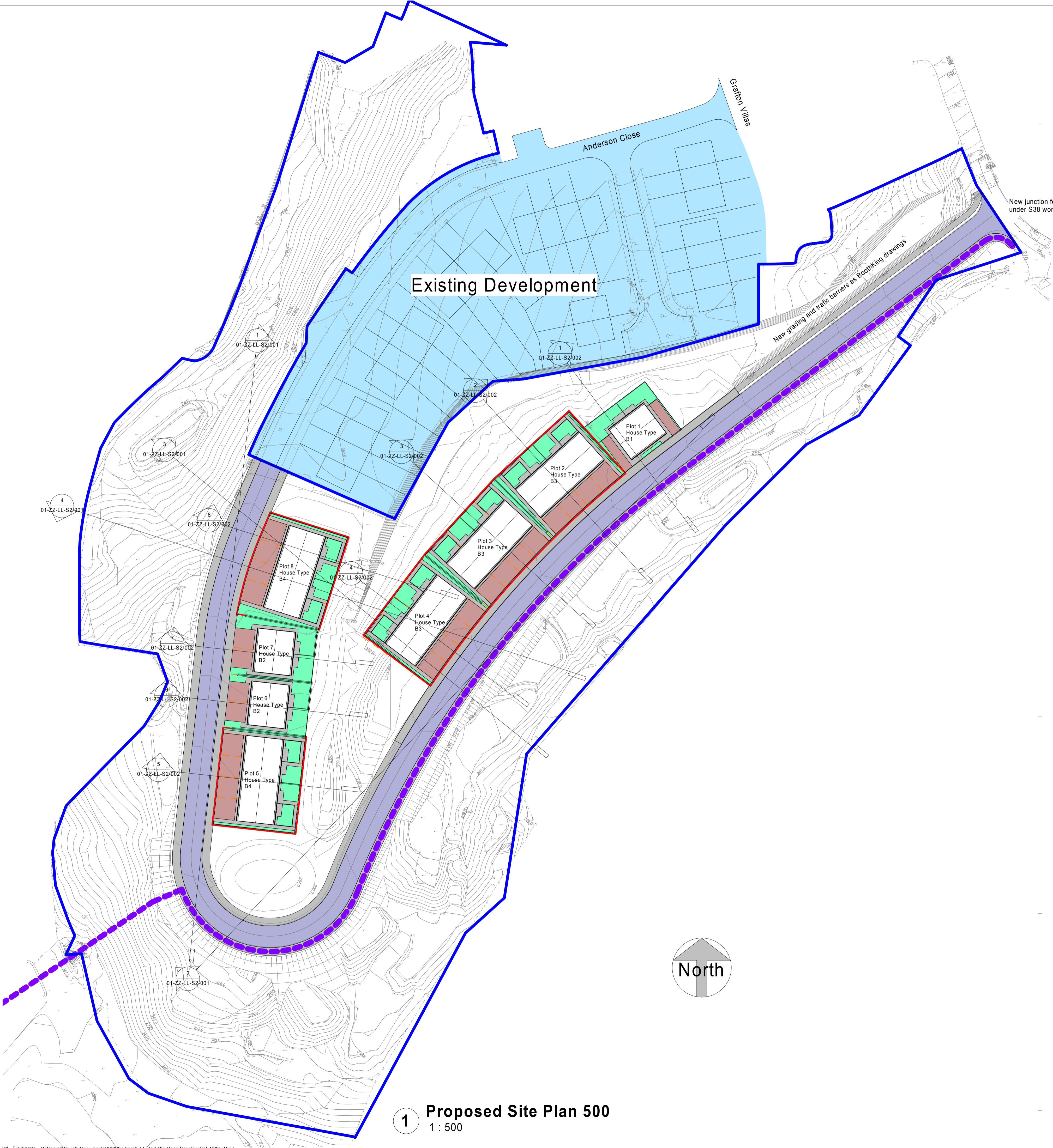
Drawing  
**Proposed Site Plan**

Scale @ A1 Drawn Checked Approved  
 As indicated NM NM NSJ

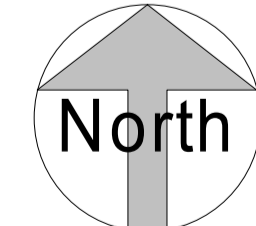
Project No. Date  
**A1729 13.06.2018**

Drawing Identifier  
 project origin building model class zone level type number revision  
**A1729-LIB-S1-A1 01-ZZ-LL-S2-001 P 9**

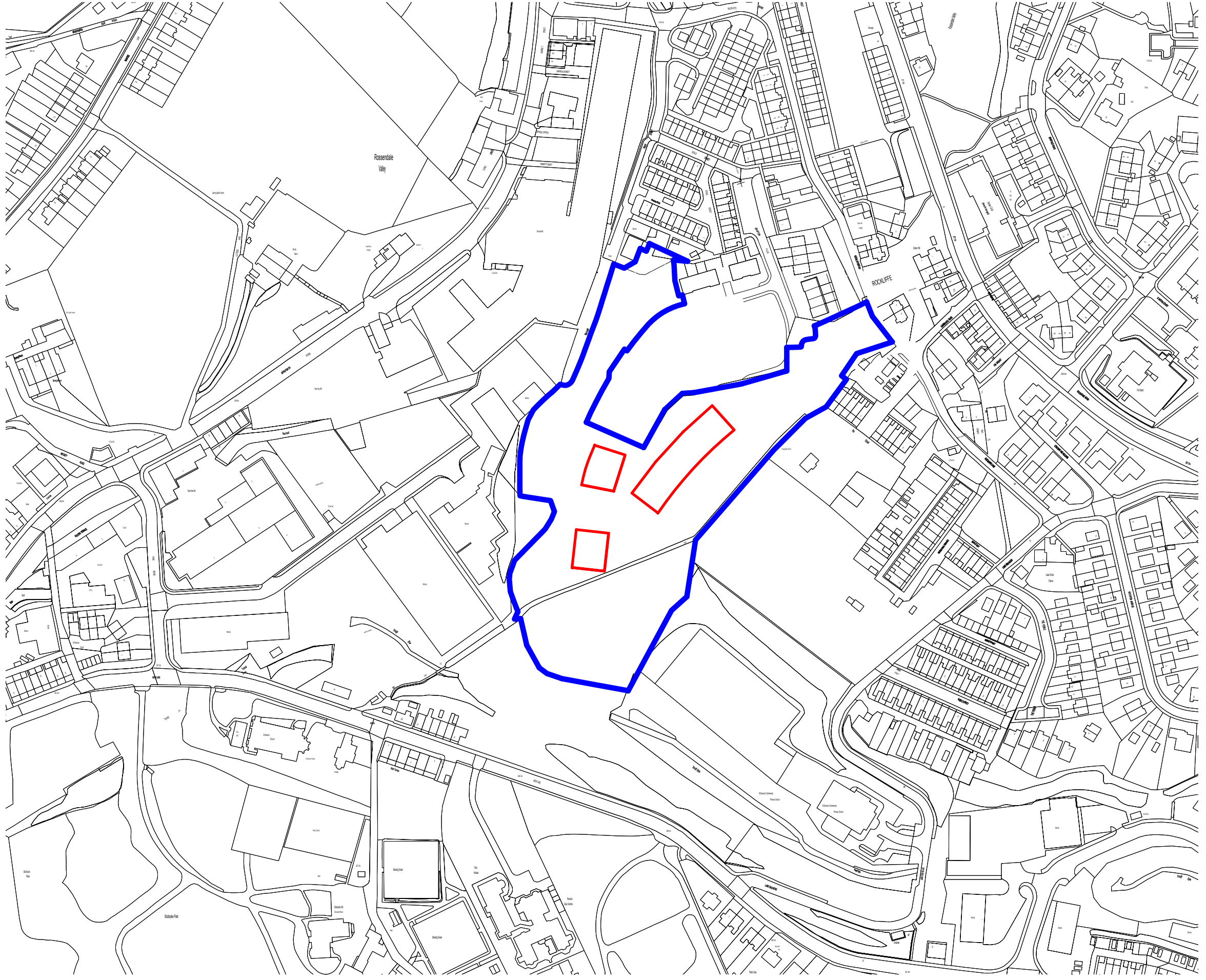
**Liberata Architects**  
 No. 1 Market Street, Nelson, BB97LJ  
 T +44 (0) 1282 878787 F +44 (0) 1282 878993  
 www.liberata.com  
 Registered office: Liberata UK Limited, 1st Floor, 100 Wood Street, London EC2V 7AN (Registered in England and Wales - No 1238274)



- Existing housing
- New paving to houses
- New driveway paving
- New soft landscaped areas
- New macadam paving to roadway
- New roadway
- Revised Plots Boundary
- Ownership Boundary
- Proposed Property boundary/ Fence
- Proposed Public Right of Way



**1 Proposed Site Plan 500**  
 1 : 500



This drawing is copyright and owned by Liberata Ltd, and is for use on this site only unless contractually stated otherwise.

DO NOT SCALE this drawing (printed or electronic versions). Contractors must check all dimensions from site.

All other design team elements, where indicated, have been imported from the consultant's drawings and reference should be made to the individual consultant's drawings for exact setting out, size and type of component.

Discrepancies and / or ambiguities within this drawing, between it and information given elsewhere, must be reported immediately to the architect for clarification before proceeding.

All works are to be carried out in accordance with the latest British Standards and Codes of Practice unless specifically directed otherwise in the specification.

Responsibility for the reproduction of this drawing in paper form, or if issued in electronic format, lies with the recipient to check that all information has been replicated in full and is correct when compared to the original paper or electronic image. Graphical representations of equipment on this drawing have been coordinated, but are approximations only. Please refer to the Specifications and / or Details for actual sizes and / or specific contractor construction information.

This original document is issued for the purpose indicated below and contains information of confidential nature. Further copies and circulation will be strictly in accordance with the confidentiality agreement under the contract. This original must be destroyed or returned to the contractor.

**SAFETY, HEALTH AND ENVIRONMENTAL INFORMATION**

Refer to the relevant Construction (Design and Management) documentation where applicable.

It is assumed that all works on this drawing will be carried out by a competent contractor, working where appropriate to an approved method statement.

|   |   |  |            |
|---|---|--|------------|
| P | 2 | Planning issue no revision             | 13.06.2018 |
| P | 1 | Updates to revised layout for Planning | 30.05.2018 |

| Rev | Description / By / Chk'd / App'd | Date |
|-----|----------------------------------|------|
|-----|----------------------------------|------|

Purpose of Issue  
**Planning**

Client  
**Barnfield Homes**

Project  
**Rockcliffe Road**

Drawing  
**Location Plan**

| Scale @ A3 | Drawn | Checked | Approved |
|------------|-------|---------|----------|
| 1 : 2500   | NM    | NM      | NSJ      |

| Project No. | Date       |
|-------------|------------|
| A1729       | 13.06.2018 |

| Drawing Identifier   |
|--|
| project origin building model class zone level type number revision<br>A1729-LIB-S1-A1 00-Z1-LL-P2-001 P 2 |

**Liberata Architects**  
 No. 1 Market Street, Nelson, BB97LJ  
 T +44 (0) 1282 878787 F +44 (0) 1282 878993  
 www.liberata.com  
 Registered office: Liberata UK Limited, 1st Floor, 100 Wood Street, London EC2V 7AN (Registered in England and Wales - No 1238274).