



# COMMUNITY BULLETIN

NOVEMBER 2021

Welcome to your November Community Bulletin. We are continuing to produce a monthly bulletin with our health and community partners to keep you updated about community activity across Rossendale. This will include information on community group activities, events, health information and community training opportunities. We hope you will find the bulletin useful.

All published Community Bulletins can be found at

[https://www.rossendale.gov.uk/downloads/download/11317/coronavirus\\_community\\_bulletins](https://www.rossendale.gov.uk/downloads/download/11317/coronavirus_community_bulletins)

Feel free to share the bulletin with friends, community groups and on community group social media. If you have some information that you would like to share in the next bulletin, or you would like to be added to the e-mail distribution list, please contact us at [communitiesteam@rossendalebc.gov.uk](mailto:communitiesteam@rossendalebc.gov.uk)

Advice and support for people impacted by Covid-19 is available from Rossendale Connected on 01706 252520 or at [help@rossendaleconnected.org](mailto:help@rossendaleconnected.org)

## COVID ADVICE

Covid 19 levels are continuing to rise in Rossendale and across England. To stop further restrictions being introduced nationally please continue to follow the national guidelines:



## COMMUNITY INFORMATION



*Santa Express*  
Saturday 18th December 2021

*Merry Christmas!*

*Look out for Santa from your doorstep or come to one of our stops and meet him!*

5pm Tesco Express  
5:05pm Basils  
5:25pm Orama layby  
5:40pm Cowm Res  
5:50pm Halfway House  
6pm Barley View  
6:05pm Leavengreave Court / Valley View  
6:10pm Knowsley Crescent  
6:30pm Britannia ( as far as New Line)  
6:45pm Facit Fold

*Download the FollowMee app to track us on the day!!*



 **Whitworth**  
Town Council

**WHITWORTH**  
TOURISM & LEISURE COMMITTEE

*Come and meet Father Christmas at one of our allocated stops and collect a bag of sweets or wave to him from your window or doorstep as he drives by!*

# Staghill Wood, Newchurch – Woodland Management

Rossendale  
BOROUGH COUNCIL

Ecological  
Estates Ltd  
AN ASSOCIATED COMPANY OF

## Habitat Improvement and Soil Protection

We are carrying out work to improve the health of this woodland. It has not been managed since it was first planted and has become too crowded - so not enough light gets to the woodland floor preventing woodland wildflowers from growing and stopping new trees and shrubs from germinating and naturally replacing the old trees.

We will be cutting down trees in two areas to make 15 x 15m light gaps. These will be planted with new trees to take advantage of the light and will be seeded with woodland wildflowers.

Wood will be left on site to create habitat for beetles, fungi and other wood feeding organisms and to help with local carbon accumulation. Wood will not be taken from site to be burned.



Some of the wood will be formed into rows to discourage people from walking in areas where soil is eroding.

We will be making a series of 'dams' with some of the wood to hold back rain water which currently races off the woodland floor taking soil with it.

The woodland will be looked after for the next five years and will be periodically thinned and the new planting and seeding areas monitored.

Please help us get this woodland into good condition by leaving wood to rot on the ground, rather than taking it away and burning it.

Please keep safe by staying well away from forestry works when felling is being carried out.





### **Who are we?**

We are a self-funding, non-profit making organisation with no allegiance to anybody. We are a group of seniors, taken from the wider communities, who contribute to the web site. We are proud to say 'we make it for seniors by seniors" We started in 2016 and continue to develop from strength to strength.

### **What do we do?**

We produce and provide free online entertainment for seniors, made by a happy band of senior volunteers.

### **How much does it cost?**

Absolutely nothing!

The latest edition is packed full of: fun, interest and activities, to watch or join in.

You can sing along with Rose and the Rossendale Memory Choir, watch a Himalayan trek up to 16,000 feet from your arm chair, take part in a Harvest Festival church service, hear our talented poets who not only write the poetry, but deliver it in a meaningful way, listen to your favourite friendship singers, take part in a round the world quiz, see the Lindale Primary School pictures of harvest, go down memory lane for the World War Two stories written by ordinary people having extra ordinary experiences, draw, read and listen to many interesting topics in this very wide and diverse production. If you are into animals and hugs you will be well pleased.

There are hours of fun and interest for you to take part and we hope you will use it to its fullest.

Special thanks to all our contributors, singers, poets, story tellers, and folks that provide all the bits and bobs we so much enjoy.

Just put in your web browser: <https://friendshipclub.org.uk/> and wait patiently for it to load up, there is a lot of material in this edition.

# BLACKPOOL

## ILLUMINATIONS

**Saturday 20<sup>th</sup> November**

Leave from the valley at **3.30p.m.**

Fish and Chips in Cleveleys

Leave from Cleveleys at **7.00p.m** and see the

## Illuminations

cost **£13.00** for the coach

(fish and chips extra)

For a booking form, contact David

01706 523138 / 07452984899 / [david.hollows@gmail.com](mailto:david.hollows@gmail.com)

Deadline for booking – **November 5<sup>th</sup>**

On behalf of the Rossendale Methodist Circuit

[www.rossendalemethodistcircuit.co.uk](http://www.rossendalemethodistcircuit.co.uk)



Reopening  
8-10-21



Longholme  
Youth Club

# Youth Club!

11-16 year olds  
At Longholme church  
Opposite Nila (Bacup road)  
Next to the temperance bar (Bank street)

Every Friday 7:00-8:30



## All Welcome!

Just 50p

First visit free

Ring Lesley or Don on 01706 821867  
for further information or just come in!

**You're  
Invited!**



## **Thursday Friends & Food**

A new group  
on the  
2<sup>nd</sup> & 4<sup>th</sup> Thursday  
of each month  
2.30-4.30pm



**Open to all and everyone welcome!**

~ Afternoon Tea ~ Well-being ~ Singing ~  
~ Craft ~ Games ~ Chat ~ Meeting & Making Friends ~  
~ Advice & Support ~ Workshops ~ Interactive ~

No Charge ~ Donations of £5 per session welcome

**First Session Thursday 28<sup>th</sup> October**  
**St Thomas' Church Hall, Helmshore Road BB4 4JR**

**Book your place! 07539 264279**

Organised & led by St Thomas' & St James' Churches  
in partnership

  
East Lancashire  
Clinical Commissioning Group



**BURNLEY PENDLE  
& ROSSENDALE**  
COUNCIL FOR VOLUNTARY SERVICE  
Established in 1991, reformed in 2012. Registered Charity 202179





## PLEDGE TO PLANT

As part of Rosendale Council's commitment to reducing our carbon footprint we have pledged to plant a tree for every child in the borough over the next three years. That's around **16,000** trees and will create Rosendale Forest across the borough.

The first stage of the project is to plant around **6,000** trees by April 2022.

The trees being used will all be native tree species, so we'll be enhancing our natural eco system.

Tree planting is a simple solution that can play a large role in ecosystem recovery and reduce climate change impacts. The right tree planted in the right place can have multiple, far reaching economic, environmental, and social benefits.

This is a fantastic opportunity for you to help make a real difference to our environment now and for future generations.

We will be hosting tree-planting events throughout this winter, especially during tree planting week which begins on the 27th November and we're looking for your help to plant these beautiful trees.

**Please register to help plant trees at :**

**[https://www.rossendale.gov.uk/forms/form/10446/en/rossendale\\_forest\\_form](https://www.rossendale.gov.uk/forms/form/10446/en/rossendale_forest_form)**





**THE LINK CENTRE**  
@HASLINGDEN COMMUNITY LINK

# CRAFTERNOONS

A great opportunity to meet new people! Come and join in with various arts and crafts projects at this free group.

## JOIN US!

**EVERY  
THURSDAY**

**2PM – 4PM**

**CALL US TODAY!  
01706 230116**

The Methodist Church in Rossendale

Welcomes **you** as our guest at our

## Community Drop-in



events

**MONDAY**

### Longholme Methodist Church

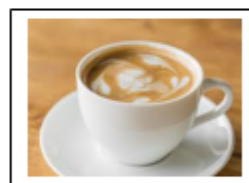
next to The Temperance Bar in Rawtenstall

10.00a.m - 12 noon

### Stacksteads Methodist Church

1.30p.m - 3.00p.m

**WEDNESDAY**



### Central Methodist Church

Burnley Road, Bacup

10.00a.m – 12 noon

**FRIDAY**

### Shawforth Methodist Church

10.00a.m – 12 noon

Join us for our visit to

**YORK**

and the

**Christmas Markets**

**Wednesday 1<sup>st</sup> December**

Coach is **£14**

Booking deadline is **November 20<sup>th</sup>**

For a booking form and details, please contact

David

01706 523138 / 07452984899

On behalf of the Rossendale Methodist Circuit

[www.rossendalemethodistcircuit.co.uk](http://www.rossendalemethodistcircuit.co.uk)

---



**SUNDAY, 5 DECEMBER 2021 10:00-  
15:00**

**Rossendale Christmas gift craft fair &  
gift box family fun day**

**Whitewell bottom community  
centre**

Join us for our visit to

**YORK**

and the

**Christmas Markets**

**Wednesday 1<sup>st</sup> December**

Coach is **£14**

Booking deadline is **November 20<sup>th</sup>**

For a booking form and details, please contact

David

01706 523138 / 07452984899

On behalf of the Rossendale Methodist Circuit

[www.rossendalemethodistcircuit.co.uk](http://www.rossendalemethodistcircuit.co.uk)





THE LINK CENTRE  
MEMORY LANE  
SUPPER EVENING

TICKETS  
**£5 PER PERSON**

FRIDAY  
**19**

NOVEMBER  
6:30PM - 10:30PM

“REMEMBERING ST.  
MARY’S PANTO”

**BOOK YOUR TICKETS NOW**

[INFO@HCL.ORG.UK](mailto:INFO@HCL.ORG.UK)

01706 230116

# THE LINK CENTRE

@HASLINGDEN COMMUNITY LINK

At a loose end? Love growing plants, flowers, vegetable? We are looking for green fingered people to volunteer in our community garden for just a few hours a week. Help grow vegetables for our food donations, community café and early years nursery.

## HELP MAINTAIN A BEAUTIFUL AND SECLUDED GARDEN SPACE FOR ALL OUR COMMUNITY TO ENJOY



Be part of the Link Family and volunteer to make a difference to someone!  
Email [info@hcl.org.uk](mailto:info@hcl.org.uk) or call **01706 230116** and ask for a  
volunteer application pack.



**WE NEED YOU!**






Rossendale Borough Council is holding the climate emergency action day on 10th November. To register for the event go to the following link:

<https://www.eventbrite.co.uk/e/rossendale-climate-emergency-action-day-tickets-184553764277>

# Rossendale Climate Emergency Action Day

## Save the date!

 10th November

 10am – 4.30pm

 The Ashcroft

(former Riverside) Whitworth



Rossendale Borough Council is holding an Action Day to promote and share information about grants, actions and local experience of how businesses and communities in Rossendale are responding to the Climate Emergency.

The morning session will focus on climate change and businesses including launching RBC's small grants programme for SMEs, minimising energy and waste, e-charging and active travel.

The afternoon session will have a Community focus including energy efficiency in homes and community buildings; the community buildings' small grant scheme; active travel and environment and working towards a Plastic Free Rossendale.

The format for each session is one or two short presentations and videos then a round table discussion about opportunities, challenges and commitments for action.

We aim to start the morning session at 10am. Lunch is scheduled for around 12.15pm and final round up at 4pm.

## CONSUMER ALERTS

### Cold Callers Selling Housewares

Cold callers offering household wares have been reported cold calling in the Ribble Valley area of Lancashire. The sellers claim they have recently been released from prison and are on probation.

Please remember the Probation Service do not instruct people to carry out door to door selling for them or on their behalf. Never feel pressured to buy anything, often items can be expensive and of poor quality.

Trading Standards advice is to always say no to cold callers. The Safetrader scheme can help you find a trader in your area, contact 0303 333 1111 or go to [www.safetrader.org.uk](http://www.safetrader.org.uk)

### Scam NHS Covid Pass Email

Criminals are using the NHS Covid Pass as a way to target the public by convincing them to hand over money, financial details and personal information. They are sending text messages, emails and making phone calls pretending to be from the NHS and offering fake vaccine certificates for sale online and through social media.

A Lancashire resident received such an email headed 'UK Digital Covid 19 certificate – your NHS order has been dispatched' and the email asked you to click to 'accept the invitation'. A closer look showed the email had been sent from an email address in Japan, nothing to do with the NHS.

Remember, the NHS App is free, the NHS Covid pass is free and the NHS will never ask for payment or for financial details. For information on how to get your free NHS Covid Pass visit [www.nhs.uk/nhsccovidpass](http://www.nhs.uk/nhsccovidpass)

### HMRC Warn of Tax Scams

HM Revenue and Customs (HMRC) is warning students and young people to be aware of potential tax scams when taking up part time jobs. Being new to interacting with HMRC and unfamiliar with genuine contact from the department could make them vulnerable to scams. In the past year almost one million people reported scams to HMRC.

Nearly half of all tax scams offer fake tax refunds, which HMRC does not offer by SMS or email. The criminals involved are usually trying to steal money or personal information to sell on to others.

HMRC advice is to be wary if you are contacted out of the blue by someone asking for money or personal information. If in doubt, – do not reply directly to anything suspicious, contact HMRC through GOV.UK and [search GOV.UK](http://search.GOV.UK) for 'HMRC scams'.

### Scam Post Office Text

Beware of receiving a text pretending to be from the post office claiming you have a parcel to collect, then asking for payment of £1.00. A resident in Pendle received this scam text and was asked for further details of a card number, bank account number and sort code.

This scam is most likely to catch people out who are expecting the delivery of a parcel. Avoid clicking on any suspicious links and if in any doubt check directly with the parcel delivery service and check their website for information on current scams.

Contact the Trading Standards Service via the Citizens Advice Consumer Helpline on 0808 223 1133

## VOLUNTEERING



### **Volunteers needed to help run this new group**

*Thursday Friends & Food* (TFF) has been set up by St Thomas' and St James' churches as part of their outreach into the community. This new group is intended to bring people back together after the long months of lockdown and isolation. A place to meet old friends and make new ones, TFF is open to all who live in the local area, regardless of background or personal situation.

The sessions will run on the 2<sup>nd</sup> and 4<sup>th</sup> Thursday of each month, between 2.30 and 4.30pm in the Church Hall of St Thomas' Church on Helmshore Road in Helmshore, Rossendale. The first session is on Thursday 28<sup>th</sup> October 2021.

Each session will include plenty of time for people to chat and share an Afternoon Tea together. There will also be opportunities to join in with interactive activities including craft, art, singing and low-level exercise. We will welcome specialists to share information on personal safety and wellbeing and provide opportunities for people to speak privately to those who can offer financial and other advice.

Volunteers will run each session with a *Team Leader* and others: *Meet & Greeters* will welcome people, sign them in and show them where everything is. Once the session has begun these volunteers will help in the kitchen area to get ready for drinks and tea time before helping to serve our Afternoon Tea. *Hosts* will help people to find a seat in the Hall and chat with people and help to coordinate our in-house activities and games. They will help to serve the Afternoon Tea and make sure that no one is left out or feeling uncertain.

All of our volunteers for TFF will receive in-house training in basic Health and Safety, and Safeguarding. We will also be offering First Aid training for those who are willing to be a registered First Aider and are able to offer Food Hygiene training for anyone wishing to pursue kitchen and catering activities. Team Leaders will also be subject to a DBS check.

More information from Father David Stephenson [frdavidstephenson@gmail.com](mailto:frdavidstephenson@gmail.com)  
07539 264278. Complete the volunteer form at  
[https://stjameshaslingden.com/events/thursday-friends-and-food/?fbclid=IwAR24gGs9r7jCc2c7Ts-RVutv\\_cmEld1AdOBGbQHVB5dgZh3MhJfTFsa0xYY](https://stjameshaslingden.com/events/thursday-friends-and-food/?fbclid=IwAR24gGs9r7jCc2c7Ts-RVutv_cmEld1AdOBGbQHVB5dgZh3MhJfTFsa0xYY)





# Support Your Community

Support the health and wellbeing of residents in your community by volunteering for our Social Prescribing programme.



Increase Confidence



Get Outdoors



Attend Community Activities



Support To Achieve Goals



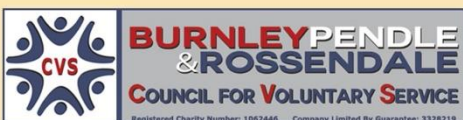
Enable Independence



Support the Social Prescribing team

All this and more makes this a highly rewarding role that makes a genuine difference to people's lives.

To express interest or for more information contact Sue Cole on 01282 433740 Ext. 1012 or email [Susan.Cole@bprcvs.co.uk](mailto:Susan.Cole@bprcvs.co.uk)



# THE LINK CENTRE

@HASLINGDEN COMMUNITY LINK

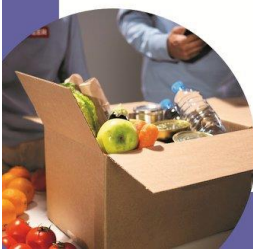
At a loose end? Do you want to give something back to your community? Do you have skills that you would like to share? Do you like meeting new people?

**THE LINK CENTRE @ HASLINGDEN COMMUNITY LINK ARE RECRUITING FOR VOLUNTEERS NOW!**



Be part of the Link Family and volunteer to make a difference to someone!

Email [info@hcl.org.uk](mailto:info@hcl.org.uk) or call **01706 230116** and ask for a volunteer application pack.



**WE NEED YOU!**





**ESSENTIAL  
WINTER  
PROTECTION**

**NHS**

**FLU  
VACCINE**

**COVID-19  
VACCINE**

There are two essential vaccines that you may need this winter – flu and COVID-19 booster. Vaccines are the best way to protect yourself, friends and family from these dangerous viruses.

Find out if you're eligible now at [nhs.uk/wintervaccinations](https://nhs.uk/wintervaccinations)

The poster features two cartoon vaccine bottles with faces and arms. The bottle on the left is labeled 'FLU VACCINE' and has a red label. The bottle on the right is labeled 'COVID-19 VACCINE' and has a green label. Above them are two virus icons: a green one and a red one. The background is yellow with a sunburst pattern. The NHS logo is in the top right corner.



# Chair Based Exercise with Diana

Exercise to 60s music

Come and join our friendly group

Brilliant class even if you have poor mobility

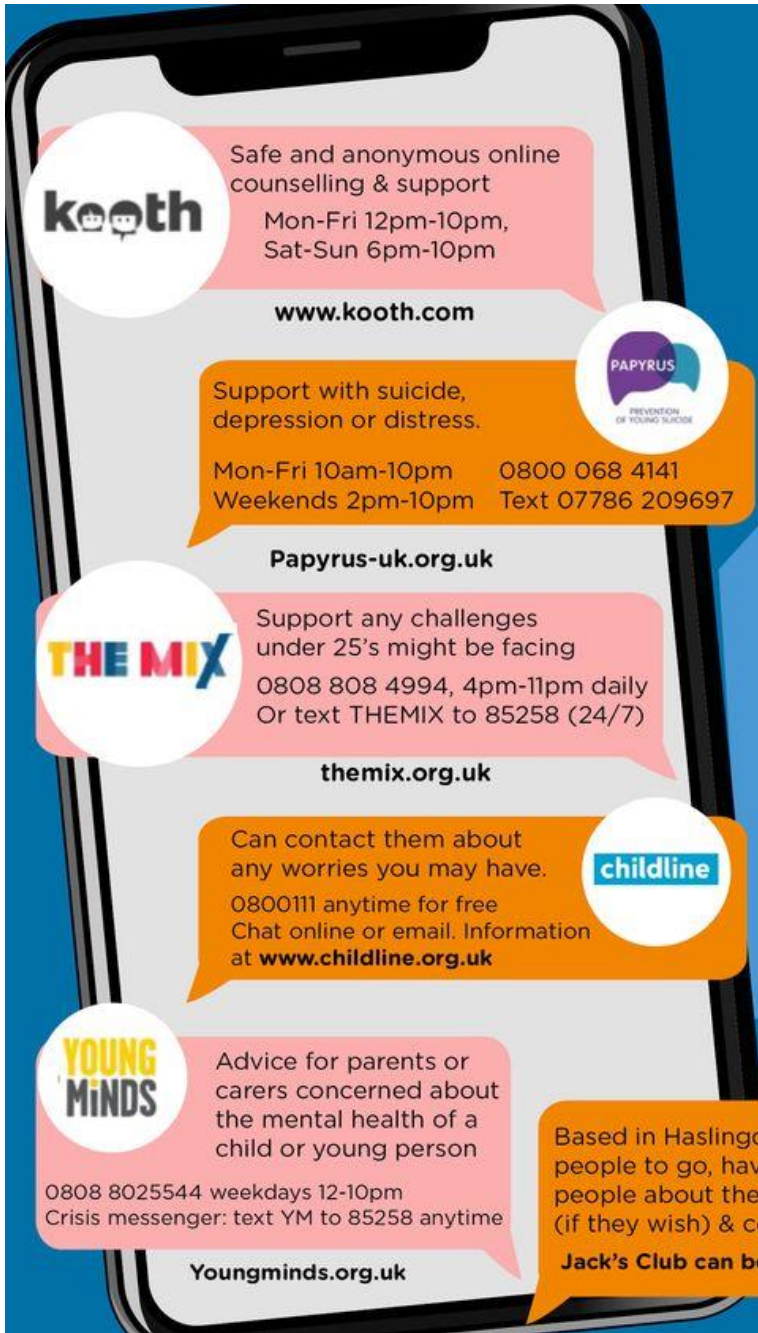


Wednesday 11am

All abilities welcome

£4.00





Safe and anonymous online counselling & support  
Mon-Fri 12pm-10pm,  
Sat-Sun 6pm-10pm

[www.kooth.com](http://www.kooth.com)



Support with suicide, depression or distress.  
Mon-Fri 10am-10pm 0800 068 4141  
Weekends 2pm-10pm Text 07786 209697

[Papyrus-uk.org.uk](http://Papyrus-uk.org.uk)



Support any challenges under 25's might be facing  
0808 808 4994, 4pm-11pm daily  
Or text THEMIX to 85258 (24/7)

[themix.org.uk](http://themix.org.uk)



Can contact them about any worries you may have.  
0800111 anytime for free  
Chat online or email. Information at [www.childline.org.uk](http://www.childline.org.uk)



Advice for parents or carers concerned about the mental health of a child or young person  
0808 8025544 weekdays 12-10pm  
Crisis messenger: text YM to 85258 anytime

[Youngminds.org.uk](http://Youngminds.org.uk)



Based in Haslingden for young people to go, have fun, chat to people about their mental health (if they wish) & connect.

Jack's Club can be found on Facebook

Rossendale  
BOROUGH COUNCIL

Lancashire  
County Council

Healthier  
Lancashire &  
South Cumbria

Rossendale  
Connected

Do you or another young person need someone to talk to?





## FUNDING



### Aviva Community Fund

A new fund has been announced that will fund:

- Climate Action: Promoting healthy, thriving communities by preventing, preparing for and protecting against the impacts of climate change
- Financial Wellbeing: Helping people to take control of their wellbeing by giving them the tools to be more financially resilient and independent

Projects submitted should aim to:

- develop a new approach, product or technology; or
- implement a new initiative or pilot a new scheme; or
- expand existing services to a new area or beneficiary group; or
- adapt services to meet today's needs without compromising those of future generations

Applicants should be registered in the UK as a charity or social enterprise and the organisation should have a bank account in its own name and have been operating for over 12 months

Projects would be expected to raise part of their project cost through Crowdfunder.

More information about the fund at:

<https://www.avivacommunityfund.co.uk/about-us>

## TRAINING



We are holding an Advice First Aid Training course as part of the launch for the new Crisis Support and Recovery Project.

This is an opportunity to upskill staff and volunteers working on the frontline to support vulnerable people in the community within Rossendale and Hyndburn.

As part of your role you probably come into contact with people for a whole range of reasons, you may realise they need additional help and support with things like benefits advice, debt, budgeting, housing, employment and so on, but you don't know what to do about it.

This short training course will help you identify problems that we can help with, provide some information from our trusted website, and know how and when to refer someone who may need more in-depth support from one of our trained Citizens Advice team members.

<p>Citizens Advice Rossendale &amp; Hyndburn</p> <p><b>Advice 1st Aid Training</b></p> <p><b>Aim:</b> Enabling community workers to confidently use Citizens Advice information and services to support vulnerable people</p> <p><b>Objectives:</b></p> <ul style="list-style-type: none"><li>• Identify when Citizens Advice can help vulnerable people in the community.</li><li>• Navigate and share reliable information using the Citizens Advice website with people who may be unable to do so for themselves.</li><li>• Recognise and refer issues where advice from Citizens Advice advisor is needed.</li></ul>	<p><b>Available dates for our live and online course:</b></p> <p>Live Session 1 - Bacup family Centre, Wednesday the 13th of October 10.30am - 12pm.</p> <p>Live Session 2 - Bacup family Centre, Wednesday the 20th of October 10.30am - 12pm.</p> <p>Live Session 3 - North Lancs Training Group, Thursday the 11th of November 10.30am - 12pm.</p> <p>Online Session 4 - Wednesday the 17th of November 1.00pm - 2.30pm.</p>
---	---

For further information contact [sarah.lageard@carh.org.uk](mailto:sarah.lageard@carh.org.uk)

To book use the link: <https://forms.gle/quSWus9pdauHNyQq9>