

Household Refuse and Recycling Guide with Calendar 2021/22



@RossendaleBC



RossendaleBoroughCouncil
EnvironmentalServices

www.rossendale.gov.uk/waste

Email: refuse@rossendalebc.gov.uk

Helpline: 01706 217777



IMPORTANT INFORMATION INCLUDING WASTE COLLECTION DATES

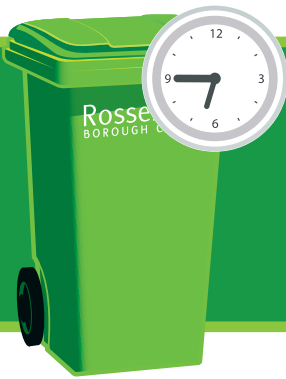
Helpline: 01706 217777 opt 3 Email: refuse@rossendalebc.gov.uk Web: www.rossendale.gov.uk/waste

ZONE 1A

Rossendale
BOROUGH COUNCIL

Printed on 100% recycled paper.





Bins to be put at the kerbside or collection point at 6:45am

Refuse and recycling is collected fortnightly on alternate weeks. Please report any missed bins or bags within 48 hours of your scheduled collection otherwise we will be unable to return.

WELCOME

Alongside your collection calendar this year we have decided to include additional information about how you can recycle more of your waste. Recycling is at the heart of our waste collection programme and the more waste you recycle means that less will have to go into in your general waste bin. General Waste is sent to landfill which is bad for the environment.

We currently recycle around 32% of our waste and we have set ourselves the challenge of increasing this to 50% by 2025. The reuse of valuable materials such as paper, glass, metal cans and plastic means that more of our natural resources do not need to be exploited. It has been calculated that up to 95% less energy may be required for the manufacture of new products from recycled waste.

As time goes on, more and more products are able to be recycled and you can find an "A to Z of Recycling" on the Rossendale BC website at: www.rossendale.gov.uk/recyclopeda. It is very important that the correct items are put into your recycling bins as if there is too much contaminating material, a load may be rejected which means that it will be sent to landfill instead of being re-used.



CHRISTMAS TREES

Collection of natural (not artificial) Christmas trees will take place from **Monday 10th until Saturday 22nd January 2021**.

Please booked your tree in on line at:

www.rossendale.gov.uk/christmastree or phone
01706 217777 Option 3

PLEASE REMEMBER

Only to place rubbish in your general waste bin that could not be either placed in the recycling containers, taken to the household waste and recycling centre, one of the community textile banks or re-use at charity shops.

When putting your wheeled bins out for collection, the lid must always be fully closed.

Rubbish that doesn't fit inside the bin, or left on the floor next to it will not be taken and you may be prosecuted for leaving waste at the side of the bin or on the floor.



RECYCLING INFORMATION

GLASS, CANS AND PLASTICS - BLUE BIN / BLUE SACK

PLEASE DON'T BAG ITEMS, GIVE THEM A QUICK CLEAN AND SQUASH THEM IF YOU CAN.

What to put in the

BLUE BIN



PLEASE USE the BLUE BIN to recycle clean glass jars, cans and plastic bottles etc...

NO PLASTIC BAGS!



PLASTIC BOTTLES



FOOD POTS / TUBS



TRAYS / PUNNETS



BROWN PLASTIC POTS



GLASS BOTTLES / JARS



FOOD / DRINKS CANS



EMPTY AEROSOLS



PLASTIC CONTAINERS



CLEAN FOIL

Please make sure all containers are empty of any remaining contents and liquids. Rinsing reduces contamination and odour.

No need to remove lids on plastic bottles, pots and tubs and glass bottles / jars.

Do not squash aerosols; lids can go in separately as well.

Top Tips



PLEASE DO NOT put these items in the **BLUE BIN**



POLYSTYRENE



LAMINATED POUCHES



CRISP BAGS



PAINT TINS



METAL



HARD PLASTICS



PLASTIC BAGS



FOOD CARTONS



BATTERIES

RECYCLING INFORMATION

PAPER AND CARDBOARD - GREY BIN / AQUA SACK




What to put in the **GREY BIN**



PLEASE USE the GREY BIN and AQUA SACK to recycle your paper and cardboard.



NO PLASTIC BAGS!

 <p>NEWSPAPERS</p>	 <p>CARDBOARD BOXES</p>	 <p>ENVELOPES</p>	 <p>WHITE PAPER</p>	 <p>CEREAL BOXES</p>	 <p>MAGAZINES</p>
 <p>SHREDDED PAPER</p>	 <p>WRAPPING PAPER</p>	 <p>EMPTY PIZZA BOXES</p>	 <p>CORRUGATED CARD</p>	 <p>GIFT CARDS</p>	 <p>LEAFLETS</p>

PLEASE DO NOT
put these items in the
GREY BIN

 <p>POLYSTYRENE</p>	 <p>WALLPAPER</p>	 <p>TISSUES</p>			
 <p>PADED ENVELOPES</p>	 <p>NAPPIES</p>	 <p>PLASTIC BAGS</p>	 <p>WET WIPES</p>	 <p>FOOD CARTONS</p>	 <p>PAPER TOWELS</p>

RECYCLING INFORMATION

GARDEN WASTE - BROWN BIN

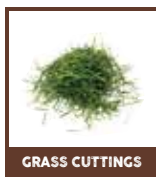
What to put in the **BROWN BIN**



NO PLASTIC BAGS!



**PLEASE USE the
BROWN BIN to recycle
your Garden Waste.**



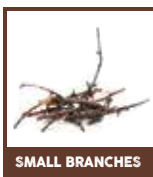
GRASS CUTTINGS



HEDGE CUTTINGS



TREE LOPPINGS



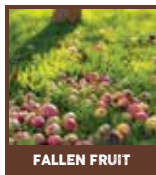
SMALL BRANCHES



PET BEDDING



FLOWERS / PLANTS



FALLEN FRUIT

The subscription charge for 2022 is £40 per bin.

There are **NO** fortnightly garden waste collections in December, January or February. If you have garden waste during the winter you can compost it at home or take it to a Household Waste Recycling Centre. Collection starts again in March 2022. Collection dates will be provided with your subscription sticker. For more details visit: www.rossendale.gov.uk/gardenwaste

Additional Brown Bins subscribed at the same time as your 1st Brown bin are £30 per bin.



**PLEASE DO NOT
put these items in the
BROWN BIN**



KITCHEN WASTE



CARDBOARD / PAPER



PLASTIC



THICK BRANCHES



SOIL / RUBBLE



FLOWER POTS

Please note that there will be a one off collection of your Brown Bin week commencing 24th January 2022 for subscribers in 2021. Please leave your bin out from Monday of that week.

GENERAL WASTE

NON-RECYCLABLE GENERAL WASTE
GREEN BIN / PURPLE SACKS

What to put in the **GREEN BIN**



PLEASE USE the GREEN BIN or PURPLE SACK for rubbish we can't recycle.

Top Tips

If you have a Green Bin, we do not provide sacks as well. To avoid smells, you should wrap all rubbish before placing it in the bin.



FOOD WASTE



PLASTIC BAGS



NAPPIES



SANITARY PRODUCTS



PLEASE DO NOT put these items in the **GREEN BIN**



BATTERIES



BULK ITEMS



ASBESTOS

HOUSEHOLD BATTERIES

You can recycle used small batteries at a collection point in a supermarket, DIY centre, local shop or Household Waste Recycling Centre.



Household Waste Recycling Centre



Did you know that your local Household Waste Recycling Centre can recycle a wide range of materials, e.g. batteries, electronic equipment, engine oil, fuel and paint?

Hazardous waste must be taken to an approved Household Waste Recycling Centre.

www.lancashire.gov.uk/waste

BULKY WASTE COLLECTION

We can collect large furniture or electrical items that you no longer need from your home. Where possible all items are re-used or recycled. The charge for a bulky collection, a white good or an electrical item is £15.50, additional items are charged at £7.00 per item. Please contact the Council on **01706 217777 Option 3** or www.rossendale.gov.uk/waste for further details and to book a collection.
Prices correct as of December 2021.

PEST CONTROL

The Council does not offer a service, for further information please see the Council's website <https://www.rossendale.gov.uk/pestcontrol>

Why not donate your unwanted items to a local charity shop?
For further information visit www.charityshops.org.uk



FLY TIPPING IN ROSSENDALE 2021

WHY IS FLY-TIPPING A PROBLEM AND WHAT IS BEING DONE ABOUT IT?

Fly-tipping is the illegal dumping of waste which is unsightly and potentially hazardous to the environment. It can be liquid or solid in nature and can vary in scale significantly from a single bin bag of waste to large quantities of waste dumped from trucks.

Fly Tipping is a significant issue in the Borough with the refuse and recycling team dealing with over 1000 occurrences reported this year. Unfortunately, this has shown an increase of 35% since last year.

WHAT ARE THE CAUSES OF FLY-TIPPING?

The causes of fly-tipping are many and varied, although financial gain or financial saving is clearly a principal reason in the majority of cases. However, a lack of waste disposal facilities or access to them, laziness and an attitude that someone else will clear up the waste, are not acceptable excuses.

DUTY OF CARE

Should you remove the waste yourself, remember you have a legal responsibility to transfer it to an authorised waste carrier. An unlicensed waste carrier may dump your waste illegally and you will be held responsible. You could also be liable to prosecution and a fine of up to £5,000. To check if someone is registered as a waste carrier you can search the public register of waste carriers by visiting www.gov.uk or call **03708 506 506** for more information.



INTERESTING FUN FACTS ABOUT RECYCLING

CANS



- Aluminium cans are lighter than steel and the base is shinier than that of a steel one!
- A magnet will stick to steel and not aluminium!
- Making one brand new can will use the same amount of energy as recycling 20 used cans!
- Your house can use up to 600 cans every year. this can include cans of beans, pop and your pet's favourite food!
- Your aluminium can of pop is the most recycled packaging container on planet earth!
- Recycling just one aluminium can will save as much energy as you need to watch your favourite tv channel for 3 hours!

GLASS



- Recycling just 1 glass bottle can save enough energy to power your computer or games console for 20 minutes!
- Glass can be recycled over and over and will still have the same qualities and strength as when the first bottle was made!
- Green glass bottles are made with 90% recycled glass!
- The glass that the uk recycles every year can save enough energy to launch 10 space shuttles!

PAPER



- We all use around 200kg of paper every year, that's the weight of a lion!
- A small car weighs 1 tonne, and for every tonne of paper we recycle will save 17 trees!
- Trees produce oxygen from the carbon dioxide that we breath out!
- Just 1 average tree can produce enough oxygen to keep 2-4 people alive!
- It only takes 7 days to recycle old paper and magazines into new ones!

ARE YOU A RECYCLING HERO

test your recycling knowledge

Recycling Quiz

1. WHAT IS RECYCLING?

- A. Burning rubbish.
- B. Reusing rubbish.
- C. Burying rubbish.
- D. Ignoring rubbish.

2. WHAT DOES RECYCLING HELP US PROTECT?

- A. Our Oceans.
- B. Our Rain Forests.
- C. Our Ice Caps.
- D. Our Whole World.

3. RECYCLING HELPS US TO PRODUCE LESS?

- A. Pollution.
- B. Water.
- C. Chocolate.
- D. Traffic.

4. HOW MUCH PLASTIC GOES IN TO THE SEA EVERY YEAR?

- A. 8,000,000 metric tonnes.
- B. 8 metric tonnes.
- C. 8000 metric tonnes.
- D. 80,000 metric tonnes.

5. HOW MUCH OF THE WORLD'S PLASTIC HAS BEEN RECYCLED?

- A. Less than 10%.
- B. Around 20%.
- C. Around 40%.
- D. More than 50%.

6. HOW LONG DOES A PLASTIC BOTTLE TAKE TO BREAK DOWN?

- A. Around 60 years.
- B. Around 280 years.
- C. Around 450 years.
- D. Around 720 years.

7. WHAT CAN RECYCLED BOTTLES BE TURNED IN TO?

- A. Clothes.
- B. Jelly beans.
- C. Trees.
- D. Cans.

8. WHAT IS THE SYMBOL THAT MEANS TO RECYCLE?

- A. An ice cream.
- B. An iphone.
- C. 3 arrows in a triangular shape.
- D. A smiley emoji.

9. WHICH ITEM IS THE MOST RECYCLED IN THE WORLD?

- A. A plastic bottle.
- B. An aluminium can.
- C. A juice carton.
- D. A glass bottle.

10. WHICH COUNTRY HAS THE HIGHEST RECYCLING RATE?

- A. Germany.
- B. Australia.
- C. United Kingdom.
- D. China.

11. WHICH ITEMS DO WE PUT IN OUR BLUE BINS?

- A. Glass, cans and plastic ONLY.
- B. Paper.
- C. Old cheese.
- D. Anything.

12. WHICH ITEMS DO WE PUT IN OUR GREY BIN?

- A. Anything.
- B. Cardboard and paper ONLY.
- C. Grass
- D. Last night's dinner.

SCORING CHART

- 10-12 **Gold** Recycling champion! Keep it up!
- 7-9 **Silver** You are recycling well, keep at it!
- 4-6 **Bronze** Good effort, you will get there!

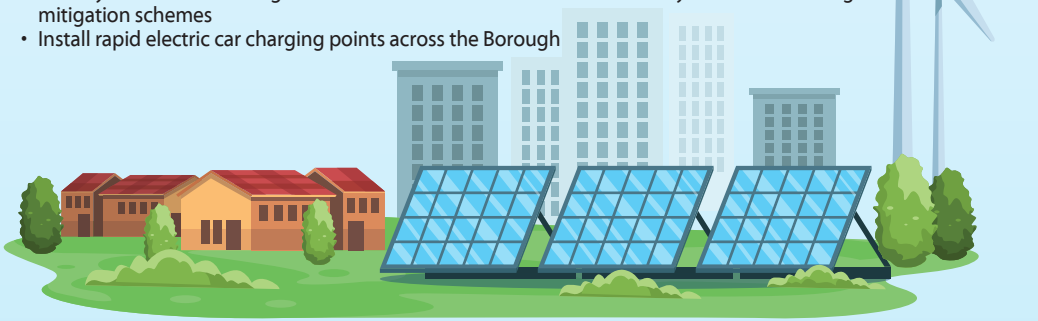
CLIMATE CHANGE

Our aims are to make the council's activities net-zero carbon by 2030 and to work in partnership to reduce carbon emissions for the whole of Rossendale.

Currently, in Rossendale, each person is responsible for an average of ten tonnes of carbon emissions each year. This equates to 24 million balloons per person. It is our aim to reduce that figure significantly!

The following are some of the steps that we are taking to achieve this

- Commissioning an assessment of the council's carbon footprint
- Converting the waste and recycling fleet from diesel to Hydrotreated Vegetable Oil Fuel (HVO)
- Ban the procurement of single use plastics for all council services and events by June 2022
- Identify areas in the Borough to work on the enhancement of biodiversity and climate change mitigation schemes
- Install rapid electric car charging points across the Borough



ROSSENDALE FOREST

Rossendale council plan to increase the number of trees across the borough and create a number of new wooded areas.

We are aiming to plant 16,000 trees, one for every child in the borough, in the next three years. 6,000 of those trees are expected to be planted by April 2022. You can get involved in helping to make your local area stronger, greener and more pleasant to live in by:

- Pledging to plant a tree
- Registering to be one of our army of volunteers to help with tree planting
- If you own Land and would like to see trees planted on it, we could provide the plants and labour, just let us know

Why not plant a tree in your garden?

It is the Queen's Platinum Jubilee in 2022 and she is encouraging people to plant a tree to celebrate the milestone.

For further information and to pledge to plant register at : www.bit.ly/rbcforest1

Rossendale Forest. A true lasting legacy for generations to come.

Frequently Asked Questions

What happens if my bins are missed?

Please phone us (within 48 hours) on 01706 217777 Option 3 to report any missed bins and we will return to empty them. However we cannot do so if they were not out by 6.45am on the correct day or if your recycling/brown bin contains the wrong items. The vehicle may have gone to unload or may have changed its route so please wait until after 4.30pm on the day of collection before calling.

What if my property is not suitable for wheeled bins?

The majority of households in Rossendale can accommodate bins. If we have agreed that your property is not suitable for wheeled bins, e.g. due to access or location problems, then we provide blue bags for glass, cans and plastics, an aqua sack for paper/cardboard and purple bags for refuse.

My bin has not been fully emptied?

Any rubbish stuck at the bottom of the bin will not be manually removed by the refuse collectors. You can loosen the waste with a broom handle for your next collection or alternatively, dispose of this yourself at your local Household Waste Recycling Centre. To avoid this scenario please do not excessively compact the contents of your bin and avoid putting lightweight items (i.e. polystyrene) at the bottom.

Will bad weather affect my refuse/recycling collection?

There may be times during bad weather when there is a delay or we cannot guarantee collection on your usual day. We will keep you informed through press releases, the Council website, Facebook and Twitter.

Can I recycle textiles?

For recycling your textiles; please refer to www.rossendale.gov.uk/waste for the current list of recycling bank locations provided by partner organisations in Rossendale.

My bin is missing/damaged, how can I get a new one?

If your green bin is damaged by an employee or vehicle of Rossendale Borough Council we will repair it if possible or exchange it for a new one. To replace a green bin that has gone missing or been stolen there is a charge of £29.50 as of February 2021. There is also a charge for supplying green bins to new properties. All recycling containers are free of charge. To request a replacement bin or to order a bin for a new property, please contact us by phone or email.

I haven't got enough room in my green refuse bin, will you take extra bags of rubbish?

If you have a green bin and are recycling fully, then you should not need to put extra bags of rubbish out. If you do have extra, please contact us to discuss your needs further. Bins should always be presented with the lid closed. Rossendale Borough Council operates a closed lid and no side waste policy.

Where can I take other items that you don't collect/recycle?

Lancashire County Council currently has a Household Waste Recycling Centre in Rossendale which accepts a wide range of materials for recycling/disposal including electrical items, hazardous waste, DIY waste/rubble, (permit needed) batteries and bulbs. This facility is situated at Duckworth Clough, Clough End Road, Haslingden. Contact them on 0300 123 6701 for more information on opening times and access policy.

What if I am unable to present my bin for collection?

We provide help emptying the bin(s) for people with confirmed mobility problems. Contact us and ask about our assisted bin collection service. All requests will be individually assessed to ensure that assistance is given to people who genuinely require it.



@RossendaleBC

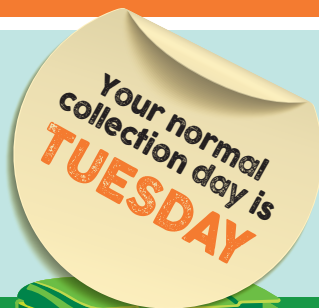


RossendaleBoroughCouncilEnvironmentalServices

PLEASE PRESENT YOUR BIN BY 6:45AM ON YOUR DAY OF COLLECTION

YOUR 2021/22 WASTE AND RECYCLING COLLECTION CALENDAR

COLLECTION CHANGES DUE TO PUBLIC HOLIDAYS ARE SHOWN IN PINK



GENERAL WASTE ZONE 1A

			DEC 21						
			7	21					
JAN 22		FEB 22		MAR 22		APR 22			
4	18	1	15	1	15	29	12	26	
MAY 22		JUN 22		JUL 22		AUG 22			
10	24	7	21	5	19		2	16	30
SEP 22		OCT 22		NOV 22		DEC 22			
13	27	11	25	8	22		6	20	

RECYCLING WASTE ZONE 1A

			DEC 21					
			14	28				
JAN 22		FEB 22		MAR 22		APR 22		
11	25	8	22	8	22	5	19	
MAY 22		JUN 22		JUL 22		AUG 22		
3	17	31	14	28	12	26	9	23
SEP 22		OCT 22		NOV 22		DEC 22		
6	20	4	18	1	15	29	13	



GARDEN WASTE

PLEASE CONSULT YOUR SEPARATE GARDEN WASTE STICKER FOR COLLECTION INFORMATION

