



COMMUNITY BULLETIN

June 2022

Welcome to your June Community Bulletin. We are continuing to produce a monthly bulletin with our health and community partners to keep you updated about community activity across Rossendale. This will include information on community group activities, events, health information and community training opportunities. We hope you will find the bulletin useful.

All published Community Bulletins are available at

https://www.rossendale.gov.uk/downloads/download/11317/coronavirus_community_bulletins

Feel free to share the bulletin with friends, community groups and on community group social media. If you have some information that you would like to share in the next bulletin, or you would like to be added to the e-mail distribution list, please contact us at communitiesteam@rossendalebc.gov.uk



COMMUNITY INFORMATION

Rossendale Ukraine guests and hosts support group



A drop in group for Ukrainian refugees and their hosts in Rossendale offering the chance to meet up, share information over a brew and biscuits.

Meetings held weekly on Tuesdays,

4pm - 6pm

Kay Street Baptist Church Hall, Rawtenstall. BB4 7LS.

Consultation on Rossendale Borough Council's election cycle

Rossendale Borough Council is consulting on how often electors should vote for our councillors. We are interested in your views on whether we should change to 'whole-council elections' every four years or retain the existing system of election 'by thirds'.

This consultation document gives background information and the reasons for both electoral cycles to help give you an informed view on the issue.

The consultation closes on 11th July 2022 at 12 noon.

Our Council

Rossendale Borough Council (the Council) currently consists of 36 councillors who are elected by voters in 14 wards. The councillors represent residents and make decisions on the running of the Council.

Current Electoral Cycle – election 'by thirds'

Currently RBC holds elections 'by thirds' meaning that in 3 years out of 4, one third of seats are up for election.

Whole-Council Elections

Under the Local Government and Public Involvement Health Act 2007, the Council has the power to change its electoral arrangements to 'whole-council elections', which would mean that all seats on the Council would be elected at the same time, once every four years.

Please note that the elections for the County Council, UK Parliament and the Police and Crime Commissioner will not be affected by any future change in the Council's electoral cycle.

Reasons to keep elections 'by thirds'

- It allows continuity of councillors by potentially avoiding a large number of new inexperienced councillors at one election.
- It encourages people into the habit of voting and voting for one person is well understood by voters. Voting for two or three councillors under whole-council elections will need to be explained well to voters to avoid confusion.
- It allows judgement of a council annually rather than every four years and allows the electorate to react sooner to local circumstances, thereby providing more immediate political accountability.

Reasons to change to 'whole-council elections'

- A council has a clear mandate for four years, allowing it to adopt a more strategic, long-term approach to policy and decision making and focus less on yearly election campaigning and the restrictions imposed by the pre-election period.
- It avoids election fatigue and the results are simpler and more easily understood by the electorate. There would be a clear opportunity for the electorate to change the political composition of the Council once every four years.
- Greater publicity of whole-council elections may generate higher turnout. The Electoral Commission suggest that electorates associate more clearly with whole-council elections.

- Lower cost for the council and political parties in running less elections, as well as less disruptive to public buildings used as polling stations.

Local Government Boundary Review

The Local Government Boundary Commission for England will soon be reviewing the Council's ward boundaries and the numbers of councillors in each ward. If the Council stays with elections by thirds, the Commission will aim for all wards to have three members each. If the Council changes to whole-council elections then each ward can have a varying number of members, or the Council can ask for single member wards.

Cost Implications

A standalone election cost circa £78,000. It is estimated that a whole-council election would cost around £90,000 (dependant on print costs). It is therefore estimated that moving to whole-council elections would produce a potential saving of £144,000 subject to the potential costs of any by-elections (circa £15k each) over the 4 year period.

Further, the cost of an election is met by the body or bodies whose representatives have been elected and therefore, any occasion where a local election is combined with another would see a reduction in costs to the Council. It is therefore proposed that if the Council moves to whole-council elections it will do so in 2024 when it can share costs with the Police and Crime Commissioner elections.

Please see the report to the Annual Council dated 20th May 2022 for further information - https://www.rossendale.gov.uk/meetings/meeting/1254/annual_council

Why Respond?

As part of making its decision on this, the Council will take into account the opinion of its residents, stakeholders and its members. We are therefore asking you to let us know which system you would prefer.

What happens next?

Following consultation, a special meeting of Full Council will be held in late July/early August (date to be confirmed) for members to consider the consultation and make the final resolution. If a change to 'whole-council' elections is approved, it cannot be changed again until a period of five years has passed.

The consultation is now live and we would ask that you all have your say by completing the attached survey using either the link below or the QR code.

<https://www.smartsurvey.co.uk/s/ESTI7T/>

This consultation will close on Monday 11th July 2022 at 12 noon. The results of the consultation will form the basis of a further report to Council in late July/ early August.



Friends of Haslingden Cemetery



The Friends aim to enhance Haslingden Holden Hall Cemetery for the benefit of its many visitors, making it a pleasant, peaceful place to visit and remember loved ones. Our volunteers work to encourage wildlife, maintain, and improve the gardens and generally develop the Cemetery's facilities. We hold regular working parties and welcome anyone who would like to come and help us care and improve the last resting place of our relatives, friends and loved ones.

We're always looking for people with special interests, skills, and experience, like horticulture, landscaping, painting, fundraising, ecology, or just enthusiasm. Whatever your ability, you'd be made most welcome.

You can support us by joining our Facebook group '**Friends of Haslingden Cemetery**' becoming a volunteer or making a regular, or one-off donation to **FOHC Lloyds Bank** sort code **30-96-26** account number **79708768**

For further information and contact details, please visit our website **www.fohc.org.uk** or email us at **friendsofhaslingdencemetery@gmail.com**

Friends of St. Anne's

SUMMER FAIR

SATURDAY 25TH JUNE

FREE ENTRY
12-2pm

BBQ | ICE CREAM VAN | TOMBOLA | GAMES

KS2 PLAYGROUND

ROSSENDALE DRUM MAJORETTES

W E T S P O N G E / B E A T T H E G O A L I E

Platinum Jubilee Royal Cake Competition

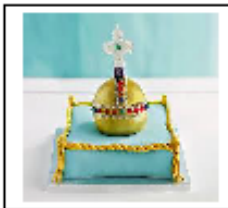
Bake a cake fit for a Queen

For the age ranges:
under 7's, 8 – 13, 14 – 18 and adults

The competition is to be held at
Longholme Methodist Church,
Rawtenstall
(next to Boots and Fitzpatrick's)

SATURDAY 4TH JUNE

Cakes to be presented between 11.00a.m and 11.30am



Judging at **11.45a.m** by
Ashley Morley-Doidge
of Fitzpatrick's Temperance Bar



Prizes awarded for **creativity**

Be creative – all cakes welcome

STACKSTEADS METHODIST ART GROUP



Wednesdays from 11am – 1pm

Taught by professional artist Rob Edmundson.

The first session is free. Thereafter it is £10 per session.

Please bring your own materials. At least a sketchbook and pencils.
Ideally watercolours, watercolour paper and/or canvases and acrylics.
There is a happy atmosphere and lots of brews.

To find out more about Rob at <https://lancashirelandscapeart.co.uk/>

The group are about to attempt to create artwork based on 'Animals'...
come and join us!

Stacksteads Methodist Church, 361 Newchurch Road, Bacup OL13 0LD

IT'S HERE!!

**FREE EVENT IN
BACUP!**

This Here festival



**Friday 3rd June 2022
Thursday 2nd June 2022**



WHERE?
Bacup Market
Irwell Terrace
AB&D Centre



Fun for the whole family

BCC
BACUP CULTURAL CONSORTIUM

Hi! CULTURE

Rossendale
BOROUGH COUNCIL



You are invited to our

JUBILEE

Thanksgiving



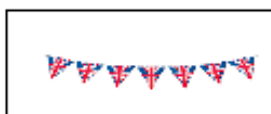
Service



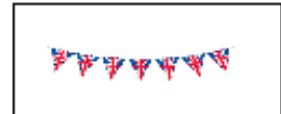
Sunday 5th June

here at

Longholme Methodist Church



at **10.30a.m**



followed by a **Jubilee Lunch**

We hope you will join with us

BIG BALSAM BASH



The national campaign to tackle this hugely invasive species

How you can help throughout May/June:

1. Organise a public event
 - a. Send details of balsam bashing public events taking place between 4th-18th July 2022
 - b. Include location/date/time/how to register (if applicable)
 - c. Send info to stephanie.wyatt@groundwork.org.uk to get it listed on the website

2. Encourage others to host public events
 - a. Use the Big Balsam Bash graphics from the [google drive](#) and post on your social media/ send emails to volunteers:

The Big Balsam Bash takes place from the 4th -18th July 2022.

We want as many people as possible to get involved in this fortnight of action. Can you host a balsam bashing event?

**Send details of your event to greatermanchester@groundwork.org.uk
<https://www.groundwork.org.uk/bigbalsambash2022/>**

3. Identify a balsam 'hot spot'
 - a. If you're a landowner/or have permission from the landowner, and you know a location where balsam grows

NOTE: WHEN SHARING ON SOCIAL MEDIA PLEASE USE THE HASHTAG BELOW SO WE CAN MEASURE TOTAL CAMPAIGN REACH

#BigBalsamBash

How you can help in July

1. Promote your own events and any listed at <https://www.groundwork.org.uk/bigbalsambash2022/big-balsam-bash-2022-events/> on social media, in newsletters etc
2. Encourage people to balsam bash in their own time
 - a. Direct people to view the 'Hot Spot' map if they're not sure where to go to find balsam - <https://www.groundwork.org.uk/bigbalsambash2022/diy-balsam-bash/>
 - b. Post on social media/ website/ email etc using the 'how to' Big Balsam Bash graphics from the [google drive](#) to encourage safe bashing
 - c. Plus encourage people to record their results on this survey: <https://survey123.arcgis.com/share/b5f6c2fb9e374f4da27e10fbb680f88b>
3. Share our 'fact cards'
 - a. Help raise general awareness about the problems with balsam by sharing the key messages/ graphics from the [google drive](#) on social media, in newsletters etc

NOTE: WHEN SHARING ON SOCIAL MEDIA PLEASE USE THE HASHTAG BELOW SO WE CAN MEASURE TOTAL CAMPAIGN REACH

#BigBalsamBash



GET US BACK ON TRACK

THE CITY VALLEY RAIL LINK

RAWTENSTALL · EWOOD BRIDGE · STUBBINS · RAMSBOTTOM · BURY · MANCHESTER



Rossendale Council has been successful in securing £150,000 funding from Restoring Your Railway and Lancashire County Council to produce a Strategic Outline Business Case (SOBC) into the Rawtenstall to Manchester travel corridor.

With high levels of commuter outflows leaving the borough to access employment, many into the Greater Manchester area, Rossendale is the only authority in Lancashire without a rail link and suffers from high levels of congestion.

Rawtenstall's rail link closed to passengers in 1972 and freight in 1980.

The proposal to reinstate the rail link has been developed by some of the leading technical rail consultants in the country with the specific remit of finding an innovative working solution which also ensures the continued success of the heritage railway. The proposed link would see journey times of around 50 minutes into central Manchester and it is predicted to reduce car journeys on the M66/A56 by anywhere between one to three million.

The link would have a relatively low cost as much of the infrastructure is already in place and would see the tram system also utilised with a specially designed interchange station at Buckley Wells to enable a fast seamless connection with Metrolink.

The plan would also enable the Heritage railway to operate a similar timetable with its heritage trains as it currently does and would see the retention of the steam age stations and signalling with the role of volunteers protected.

Systra Consulting who have been appointed by Rossendale Council to carry out the SOBC have produced a residents and business survey to assist them in drafting the report.

The study is expected to be completed around September and the surveys can be found on the councils website here for businesses <https://bit.ly/surveybusi> and here for individuals <https://bit.ly/surveyindiv> .The survey will close on 22 June 2022.



ROSSENDALE CLIMATE NETWORK

The Rossendale Climate Network is a group of likeminded individuals, schools, groups, businesses and organisations who are interested practical action to tackle the climate emergency in Rossendale.

Find us on our Facebook page.

<https://www.facebook.com/groups/rossendaleclimatenetwork>. We would like to hear from anyone who is taking local action or has some information to share with others in the area.

BACUP NATURAL HISTORY SOCIETY & MUSEUM
24 YORKSHIRE STREET, BACUP OL13 9AE



EXHIBITION OF PREVIOUSLY UNSEEN ROYAL MEMORABILIA & BACUP WOMEN AT WAR (FEATURING ROYAL VISIT TO BACUP 1913 FILM)



Friday & Saturday
3rd - 4th June 2022

10.30 am
3.30 pm

Adult Non-Members £2.50
Concessions £2.00
Children Free



FREE EVENT

Saturday 4th June | 12pm - 4pm

performances
from

FREDDIE MERCURY
IDOL FRETS BETWEEN THE VINES
THE MASH UP MEN



FOOD, DRINKS, STALLS, & CRAFTS

a **Waffle.**
Bacup **JUBILEE** *special*
An evening of
WORD & SONG



Dominic
Berry



Genevieve
L. Walsh



Mary Joanna
& the Star



Matt
Rynn

7.30pm Thursday
June 2nd

7 Burnley Road



Bacup, OL13 8AB

Tickets

£5

search

waffle-jubilee
on Eventbrite
#wafflejubilee

Your host



Paul Jenkins

WHAT'S ON... Cowpe Community Hall

FRIDAY
13th
MAY

FAMILY EVENING

Come along with your family and enjoy an evening of food, drinks and games (bring your own).
If you fancy **Pizza and Pud** pre-order your food (menu on our facebook page- Cowpe Community Hall)
£1 Entry per person. Bring a blanket too!

JUBILEE CELEBRATIONS

2pm Duck Race! (£1 per duck- text Sarah 07833086225)
2:30pm Tug of War
Bring your own picnic
Lots of games to enjoy including Human Fruit Machine, Splat the rat, tin can alley and play your cards right!
Tombola! Please donate either chocolate or a bottle if you can and let Sarah know.

Friday
3rd
JUNE

Saturday
16th
JULY

4TH COWPE SCARECROW FESTIVAL & SUMMER FAIR

THE THEME...ANNUAL EVENTS!

Any event that occurs once a year e.g. Queen's birthday, flower festival, sporting events etc...lets get creative! Scarecrows can be put up 2 weeks before and left up for as long as you wish. Please enter by emailing gillthewanderer@btinternet.com and include your name and address. **PRIZE** for the winner!

Summer fair will be in the hall on the same day with stalls such as bottle tombola, candles and jewellery and refreshments will be available. If you wish to help or run a stall then please let us know.

Please follow our facebook pages: Cowpe Community Hall and Cowpe Community Page to find out what is going on in your local community and for updated information.

Starting 7pm
Friday 3rd
June 2022

Relay for Life Team Zumba

CHARITY EVENT



ZUMBA

All proceeds to Relay For Life Rossendale

Raffle Pie & Peas Live Music

To be held at

JOLLY SAILOR, WATERFOOT BB4 9BD



Raffle prizes include

Mini Valet, Bowling Voucher

Meal for 2 (Rose & Bowl)

Garden Centre Voucher

(Marlpits Garden Centre)

Coffee 'n Cake (Water Trough)

MOT, Haircut (Adam's Barbers)

Plus many more great prizes



Rosendale
leisure trust

ROSSENDALE KITE FESTIVAL

IN ASSOCIATION WITH
THE NORTHERN KITE GROUP

SAT 2ND & SUN 3RD JULY 2022

FREE ENTRY



The Royal Crawshawbooth Scarecrow Competition

In celebration of The Queen's Platinum Jubilee

**Design and make your own royal
scarecrow to display outside
your home.**

**Entry forms available at
Crawshawbooth Primary School.**

**Hand in your entry form with a
donation of £3 by Wednesday 8th June.**

**Entries will be judged by Christiana Buchanan,
Deputy Lord Lieutenant of Lancashire on
Thursday 9th June.**

**All proceeds will go to
Rossendale Hospice.**

In support of





Lancashire Choir of the Year launches

The search is on to find Lancashire's top choral singing talent as part of an exciting new competition, which launched Wednesday 18 May.

Lancashire Choir of the Year 2022 aims to encourage a wide range of choirs from communities, workplaces and schools to come together to showcase their love of singing.

The competition, which is open to people from Lancashire, Blackpool and Blackburn with Darwen, will see choristers put their skills to the test recording their performances on video in a bid to reach the finals.

People of all abilities from budding baritones to soaring sopranos are welcome to take part. Schools can enter choirs including pupils aged 12 and above, and non-school based choirs can include people of all ages.

A panel will judge the videos and pick the winners, who will go through to the finals to be held on 24 November 2022 at Preston Guild Charter Theatre. The finals have been timed to take place just before Lancashire Day (27 November).

The competition will culminate in live performances from the finalists and the panel will announce the overall winner, as well as category winners and a 'People's Choice' award.

For more information about the competition, [visit the Lancashire Choir of the Year 2022 website](#).



 **VIC**
VETERANS IN COMMUNITIES
Return Belong Prosper

VIC Centre Haslingden

Every Thursday 1pm - 3pm

Come and join us at the VIC centre in
Haslingden.

We meet up every Thursday for a few
hours to catch up over a brew, quiz and a
Greggs

For more information please call the office on
01706 833180

www.veteransincommunities.org

Registered Charity No: 1151194 Company Limited by Guarantee No: 8230197

Day trips in June

Saturday 11th June

Liverpool

(optional 3 hour Liverpool bay cruise)

leave from the valley at 9.00a.m and coach cost is £21.00

Wednesday 29th June

Llandudno

leave from the valley at 9.00a.m and coach cost is £22.00

Day trips in July

Sunday 3rd July

Buxton Well Dressing

leave from the valley by minibus at 11.00a.m and coach cost is £22

Saturday 9th July

Buxton Carnival

leave from the valley by minibus at 10.00a.m and coach cost is £22

Wednesday 13th July

Manchester city river cruise

leave from the valley at 10.00am and travel by The Witchway to Manchester
cost of the river cruise is £8.00 (deadline for booking – June 30th)

Tuesday 26th July

Scarborough

leave from the valley by coach at 9.00a.m and coach cost is £24

For booking forms and further details please contact:
David Hollows – 07452984899 / david.hollows@gmail.com
or visit the website - www.rossendalemethodistcircuit.co.uk

HEALTH AND WELLBEING

Renew Wellbeing Lumb

A range of social and relaxing activities in good company

Mondays 11.00 am till 12.30 pm

Lumb Baptist Church, Burnley Road East, Rossendale, BB4 9PL



A safe space where its OK not to be OK.

STOP THE STIGMA. SUPPORT MENTAL HEALTH AWARENESS



INITIAL RESPONSE

If you would like to talk to someone in complete confidence about stress, anxiety, depression or any related issues, please contact our Mental Health Initial Response Unit.

CALL TODAY

01706 534 988

OR EMAIL

ROSSENDALE.RESPONSE@UNLOCKYOURYOU.COM

UNLOCK
your you



East Lancashire Hospitals
NHS Trust

Young People's Mental Health

Concerned about your mental health?
Are you under 18 or concerned about
someone under 18?

Advice sessions are available on-line via
Attend Anywhere

Log on using the hyperlink -
<https://nhs.vc/HLSC/CAMHS>

Enter the word "drop" as the first name and "in" as the second name followed by your date of birth. You will then enter our virtual waiting area where we will collect you.

Tues	7	June	1pm - 3pm
Wed	15	June	3pm - 5pm
Wed	22	June	5pm - 7pm
Tues	28	June	3pm - 5pm

Safe | Personal | Effective

FUNDING

Scout Moor Habitat Enhancement Fund

The Scout Moor Wind Farm Habitat Enhancement Fund (HEF) was set up to enable environmental improvement works within the Pennine uplands of East/ South Lancashire and Greater Manchester, aimed at the maintenance, restoration and re-establishment of habitat and wildlife interests.

Scout Moor Wind Farm is a development on moorland situated between the village of Edenfield, Lancashire, and the town of Rochdale, Greater Manchester.

Burning, over-grazing, drainage and past pollution have resulted in major damage to Pennine moorland habitats, meaning that these areas have become less effective at supporting wildlife.

The primary focus of the HEF is to re-wet Blanket bog and to enhance other upland habitats, including Heathland and Fen. In addition many of the species that are characteristic of these areas may also depend on adjacent Grasslands, and therefore the HEF aims to maximise the value of such areas for nature conservation.

Since its inception, the fund has contributed to projects including:

- Over 200 hectares of bog re-wetted
- Further peat erosion prevented
- Restoration of Moorland flora
- Habitat restoration for moorland fauna

What types of projects are covered by the fund?

Funding is provided for practical and positive projects that have a high potential to bring about the restoration, to favourable condition, of Blanket bogs or upland habitats; and/or to deliver conditions that are favourable to upland breeding birds.

Payments are considered for activities such as:

- Grip-blocking (re-wetting)
- Heather restoration
- Stock reductions, including fencing
- Selective control of bracken
- Removal of trees and shrubs from mires
- Restoration/re-establishment of wet grassland and upland hay meadow
- Conservation grazing

Funding available

There are two levels of funding, depending on the size of the project - large projects of over £5,000 in value; and small projects up to £5,000.

More information at https://gmlrc.org/scout_moor_habitat_enhancement_fund/index.htm

Money Saving Expert (MSE) Charity to Bring Forward its September 2022 Round



Non-profit groups will now be able to apply in June 2022 for projects which help to build financial resilience.

In response to the current cost-of-living crisis, MSE will bring forward its next planned funding round, which was originally due to open in September this year.

The theme for the round is Building and Developing Resilience, and projects should focus on providing urgent money guidance and emergency debt help to those of in need of support through the cost-of-living crisis in the UK.

There is particular interest in applications which use memorable, innovative, and or creative ways of delivering financial life skills which will make a lasting impact on the way people think, behave and manage their money.

Small to medium-sized non-profit organisations with a constitution can apply, including UK registered charities, community interest companies, social enterprises and credit unions.

The Charity has updated its eligibility requirements, and will now accept organisations with an annual income of up to £750,000. Groups must also have unrestricted reserves that are less than six months of their running costs.

Applications will open on 20 June 2022 and close on 22 July 2022 (or when 40 applications have been accepted).

Applications are usually invited twice a year: in February and September. Each grant round is limited to the first 40 accepted applications.

In light of the cost of living crisis, the next grant round, Building and Developing Resilience, will open on 20 June 2022 and close on 22 July 2022 (or sooner if 40 applications have been accepted). Decisions are expected by 21 September 2022.

A grant eligibility quiz, online application form, guidance notes and FAQs are available on the MSE Charity website. The application guidance document changes for each round and groups should make sure they have read it carefully before starting the application form.

For more information, visit the [MSE Charity website](#).

Understanding Domestic Retrofit

Valley Heritage are pleased to offer FREE online training - Understanding Domestic Retrofit (UDR) delivered by North West Skills Academy. This project is being funded by the UK Government through the UK Community Renewal Fund.

Candidates will be enrolled on the nationally recognised qualification the NOCN Level 2 Award in UDR. This provides a solid introduction to the installation of whole-house retrofit measures to domestic buildings.

It will set you on the path to compliance with the requirements of the PAS 2030 specification, which is the British Standard for energy efficiency installers and necessary for future work in the retrofit sector.

It will teach you what domestic retrofit is, how to carry out basic retrofit installations and what to look out for when installing energy efficiency measures in homes.

Eligibility

- There are no formal entry requirements for learners undertaking this qualification, however, experience in the construction industry would be a benefit.
- You need to be a resident in Lancashire or to be employed by a company registered in Lancashire (evidence to be provided as part of registration process)
- You must have access to a computer and a reliable internet connection
- Commitment to attend 3 full days online training and sit a multiple choice test.

Training Dates: Mondays June 27th & July 4th and 11th.

Places are restricted and booking is essential so please book early

Deadline for booking is 21st June 2022

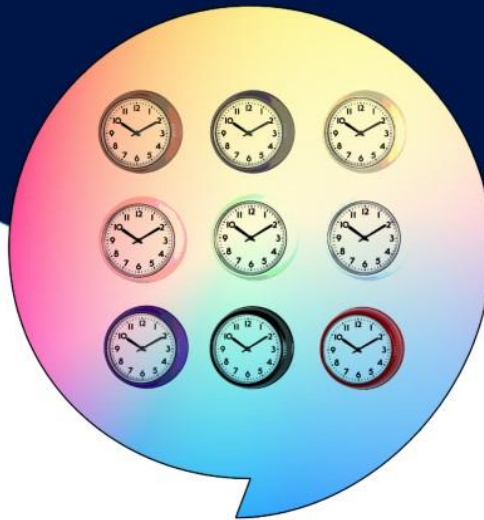


For more information and to book onto the training event please contact Tricia Brindle at Rossendale Borough Council on:

triciabrindle@rossendalebc.gov.uk or telephone on 01706 252542

VOLUNTEERING

**Can you spare a few hours a week
to help make a real difference?**



We're looking for people to join our team of volunteers.

By joining our friendly team you will help clients resolve a range of problems including benefits, employment, debt and many more issues.

We welcome applications from all members of the local community and particularly welcome applications from the BAME and LGBTQ+ communities who are currently underrepresented in our volunteer team.

We are a local charity and we support local people.

**If you are interested in finding out more then please call us on
07562696130 or email recruitment@carh.org.uk.**



**Rossendale
& Hyndburn**

We Can't Wait to Hear from You!
