

# ZONE 1B



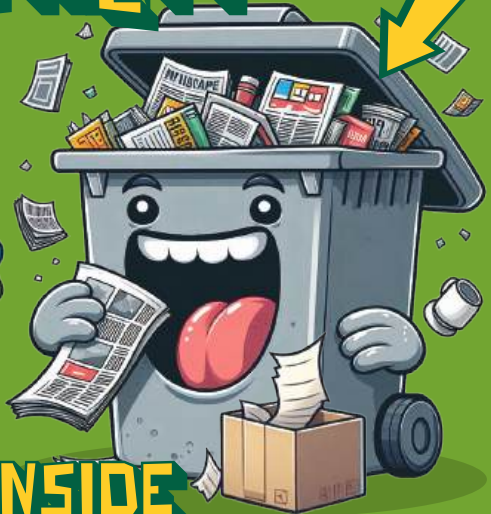
ROSSENDALE  
BOROUGH  
COUNCIL

Household Refuse and  
Recycling Guide with Calendar

Dec 2024 - Mar 2026

# FEED OUR GREED

## KEEP US HAPPY



# READ INSIDE WHAT WE LIKE BEST



[refuse@rossendalebc.gov.uk](mailto:refuse@rossendalebc.gov.uk)

[www.rossendale.gov.uk/waste](http://www.rossendale.gov.uk/waste)



RossendaleBoroughCouncil  
EnvironmentalServices



@RossendaleBC

**IMPORTANT INFORMATION INCLUDING WASTE COLLECTION DATES**

# WELCOME

THIS GUIDE HAS BEEN DESIGNED SPECIFICALLY TO HELP YOU RECYCLE AS MUCH OF YOUR HOUSEHOLD WASTE AS POSSIBLE.

**IT CONTAINS USEFUL INFORMATION ON EACH OF OUR RECYCLING SERVICES. PLEASE KEEP IT AS A USEFUL REMINDER OF WHAT YOU CAN RECYCLE IN ROSSENDALE.**

Rossendale Borough Council's Refuse and Recycling services are the highest volume operational services within the Authority. It is therefore vital that these services operate effectively and efficiently. The Council wants to provide domestic refuse and recycling collections that are good value for money and which meet the needs of our residents.

Collections of recycling and refuse are made from over 32,000 households each week, this amounts to over 2.5 million total collections a year.

## Bins to be put at the kerbside or collection point by 6.45am

Refuse and recycling is collected fortnightly on alternate weeks. Please report any missed bins or bags within 48 hours of your scheduled collection otherwise we will be unable to return.

More than 1000 properties are registered for additional assistance with their weekly collection. There is also a low cost bulky waste collection service which has grown over recent years to collect over 4000 items a year. We also offer a trade waste service for which over 415 businesses are registered.

**We hope you will find your recycling services convenient and easy to use.**

Please visit [www.rossendale.gov.uk](http://www.rossendale.gov.uk) for an 'A to Z' of Recycling. If you do experience any difficulties recycling please contact us at: [refuse@rossendalebc.gov.uk](mailto:refuse@rossendalebc.gov.uk)



## CHRISTMAS TREES

Collection of Natural (not artificial) Christmas trees will take place from **Monday 6th until Saturday 25th January 2025**. Please book your tree collection at: [www.rossendale.gov.uk/christmastree](http://www.rossendale.gov.uk/christmastree).

## NO SIDE WASTE

Rubbish that doesn't fit inside the bin, or is left on the floor next to it will not be taken and you may be prosecuted for leaving waste at the side of the bin or on the floor.

Please remember only to place rubbish in your general waste bin that could not be placed in the recycling containers, taken to the household waste and recycling centre, one of the community textile banks or re-used at charity shops.

When putting your wheeled bins out for collection, the lid must always be fully closed.



## BLUE BIN

# RECYCLING INFORMATION GLASS, CANS AND PLASTIC

Please don't bag items, give them a quick clean and squash them if you can.

 **YES PLEASE**

**Glass - Cans - Plastic Bottles  
Aerosol Cans - Foil - Tubs/Pots**



Bins need  
to be out for  
**6.45am**  
on collection  
day

## NO THANKS

Window Glass - Plastic Bags - Cling Film - Engine Oil Bottles - Polystyrene  
Pyrex - Tetra Paks - Waxed Containers - Hosepipes - Garden Furniture  
Clothing, Bedding, Shoes & Curtains - Any Household Waste

[rossendale.gov.uk](http://rossendale.gov.uk)



 **ROSSENDALE  
BOROUGH  
COUNCIL**

## GREY BIN

# RECYCLING INFORMATION PAPER & CARDBOARD

## ♻️ YES PLEASE

**Newspapers - Magazines - Brochures - Catalogues  
Office Paper - Envelopes - Junk Mail - Telephone  
Books & Yellow Pages - Cardboard Packaging  
Greetings Cards - Shredded Paper**



Bins need  
to be out for  
**6.45am**  
on collection  
day

## NO THANKS

**Tetra Paks - Waxed Containers - Fruit Juice Cartons - Jiffy Bags - Bubble wrap  
Foil or Plastic Backed Paper - Plastic Wrapping - Toys - Textiles - Wallpaper  
Hosepipes - Garden Furniture - Clothing, Bedding, Shoes & Curtains  
Any Household Waste**

[rossendale.gov.uk](http://rossendale.gov.uk)



 **ROSSENDALE  
BOROUGH  
COUNCIL**

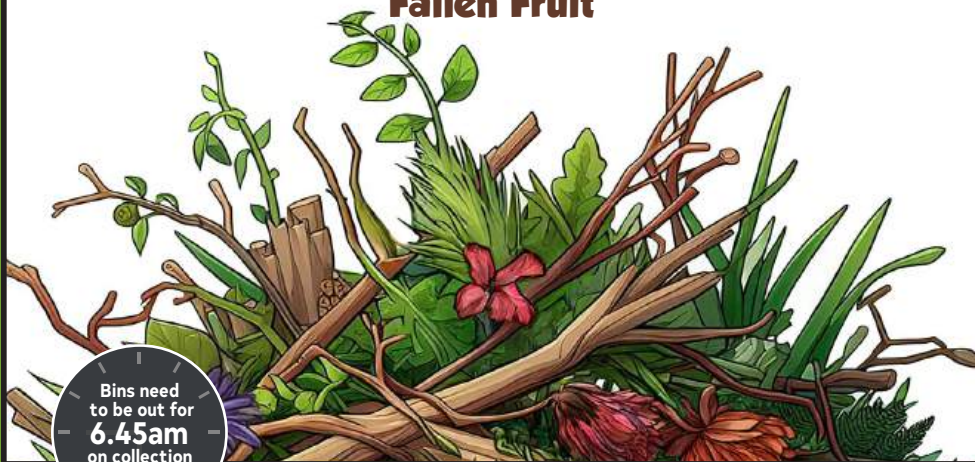


## BROWN BIN

# RECYCLING INFORMATION GARDEN WASTE

## ♻️ YES PLEASE

**Grass Cuttings - Hedge Cuttings - Tree Loppings  
Small Branches - Pet Bedding - Flowers & Plants  
Fallen Fruit**



Bins need  
to be out for  
**6.45am**  
on collection  
day

## NO THANKS

**Kitchen Waste - Cardboard & Paper - Plastic - Thick Branches - Soil & Rubble - Flower Pots**

There are **NO** fortnightly garden waste collections in December, January or February. If you have garden waste during the winter you can compost it at home or take it to a Household Waste Recycling Centre. Collection starts again in March 2025. Dates will be provided with your subscription sticker. **Direct Debit payments for garden waste will be discontinued from 2025. If you currently have a DD you will now need to pay annually. This can be done easily on our website.**

For more details visit: [www.rossendale.gov.uk/gardenwaste](http://www.rossendale.gov.uk/gardenwaste)

### Please note:

- There will be a one off collection of your brown bin in week commencing 3rd February 2025 for subscribers in 2024, and a one off collection w.c. 2nd February 2026 for subscribers in 2025.
- This service can only be offered to properties accessible to our 26 tonne garden waste vehicle.

[rossendale.gov.uk](http://rossendale.gov.uk)



 **ROSSENDALE  
BOROUGH  
COUNCIL**

## GREEN BIN

# RECYCLING INFORMATION NON-RECYCLABLE GENERAL WASTE

 **YES PLEASE**

**Food waste - Non-recyclable items - Plastic Bags  
Kitchenware - Pyrex - Disposable Nappies**



Bins need  
to be out for  
**6.45am**  
on collection  
day

## NO THANKS

**Any items that can be recycled - Glass Bottles - Jars - Cans - Plastic Bottles  
Garden Waste - Paper - Cardboard or Textiles - Computers - Electrical Goods  
Hazardous Waste - Paint & Oil - DIY items - Building Waste Soil & Rubble**

[rossendale.gov.uk](http://rossendale.gov.uk)



 **ROSSENDALE  
BOROUGH  
COUNCIL**

# BULKY WASTE COLLECTION

We can collect large furniture or electrical items that you no longer need from your home. Where possible all items are re-used or recycled. Charges for the service can be found at this location:

[www.rossendale.gov.uk/bulkywaste](http://www.rossendale.gov.uk/bulkywaste)

We may collect your items at different times using different vehicles, for example fridges and upholstered furniture are collected separately to enable us to dispose of them correctly. Please contact the Council at: [www.rossendale.gov.uk/waste](http://www.rossendale.gov.uk/waste) for details and to book a collection.

Prices correct as of December 2024.

## When to put your items out for collection.

Put your bulky items in your front garden as soon as you've booked your collection. We may collect them straight away. Please read the terms and conditions before you make your booking. You are liable to lose your payment if your bulky waste is not out in time, or removed by a third party.

## Persistent organic pollutants (POPs) guidance:

The Environment Agency (EA) has issued guidance regarding the disposal of upholstered domestic seating (WUDS) which often contains Persistent Organic Pollutants (POPs) and other hazardous chemicals. Local authorities now have to manage the disposal of items containing POPs and from 1st of January 2023, this waste cannot be disposed of in landfill, and it has to be incinerated. POPs remain intact in the environment for long periods and if not disposed of properly they become widely distributed geographically. They accumulate in the fatty tissue of humans and wildlife and have harmful impacts on human health and on the environment. The law requires that POPs are destroyed. This means waste containing POPs must be incinerated and must not be re-used, recycled or sent to landfill.

## What items may contain POPs?

Upholstered domestic seating with any part made of, or containing leather, synthetic leather, foam or other fabric may contain POPs. Items include sofas, sofa beds, armchairs, kitchen and dining room chairs, stools and foot stools, home office chairs, futons, bean bags, floor and sofa cushions.

## PEST CONTROL

The Council **DOES NOT OFFER** a service, for further information please see the Council's website:

[www.rossendale.gov.uk/pestcontrol](http://www.rossendale.gov.uk/pestcontrol)



## Please note following items are unlikely to contain POPs:

- Items that are not upholstered, for example, a wooden chair without a cushioned or textile back, seat, or arms
- Deckchairs
- Waste from manufacturing new domestic seating after 2011 that the manufacturer can demonstrate does not contain POPs

## What if my POPs items are damaged?

If items are damaged, ripped or torn, the damage **MUST** be repaired with no foam exposed. For example, taping it up, this enables safe collection and disposal. Any items that have not been sufficiently repaired will not be taken and we will not be able to return. This will need to be re-booked for another collection.

## Other bulky items

All other items including mattresses, curtains, blinds, beds and whitegoods are not currently covered by this guidance.

**WHY NOT  
DONATE YOUR  
UNWANTED ITEMS  
TO A LOCAL  
CHARITY SHOP?  
FIND OUT HOW AT:**

[www.charityshops.org.uk](http://www.charityshops.org.uk)



# Environmental Crime

## Fly Tipping

Fly-tipping is the unauthorised disposal of waste or unwanted items on both public and private land. This could be anything from household waste, like a bag of rubbish, garden refuse or an old fridge, to commercial waste such as a truckload of builder's rubble and asbestos. The reason for dumping is usually to avoid the cost of proper disposal.

Besides being unsightly, anti-social and polluting, fly-tipping can be detrimental to wildlife, and possibly pose a risk to public health and the environment.

Any evidence found at the scene of any fly tipping will be handed to the Council's Public Protection Unit for a criminal investigation by Enforcement Officers.

## Operation Trident

Operation Trident is Rossendale Council's action plan to deal with Environmental Crime across the Borough. It co-ordinates a three-pronged approach of:

- Education
- Enforcement
- Removal

No matter how large or how small the fly tipping is, we will investigate and where possible enforce the legislation. The help provided by members of the public is crucial and we urge residents to 'See it – Report it'.

Online reporting:  
[www.rossendale.gov.uk/homepage/20041/report-it](http://www.rossendale.gov.uk/homepage/20041/report-it)  
Email: [envcrime@rossendalebc.gov.uk](mailto:envcrime@rossendalebc.gov.uk)

# Battery Recycling


**THOUSANDS OF TONNES OF CO2 EMISSIONS CAN BE AVOIDED IF THE UK INCREASES BATTERY RECYCLING. IN 2020, AROUND 40,000 TONNES OF PORTABLE BATTERIES WERE SOLD IN THE UK, WITH ONLY AROUND 18,000 TONNES BEING RECYCLED.**

Most batteries are thrown away in household rubbish bins, which means they are dumped at landfill sites. There are many different types of batteries, all of which contain dangerous chemicals, including lead, cadmium, zinc, lithium and even mercury.

**ENFORCEMENT IN 2024**  
Father and son from Bacup received prison sentences of 18 months and 10 months respectively, suspended for 18 months, after being found guilty of the fly tipping of approximately 40 tonnes of waste on land at Futures Park. They were also ordered to carry out 150 hours each of unpaid work. A third male from Stockport, the driver of the vehicle used, was sentenced for 8 months in prison suspended for 18 months and 150 hours of unpaid work after pleading guilty to the offence.



**ENFORCEMENT IN 2024**  
Another male from Stockport was found guilty of a fly tipping offence which took place at Rosebank, Edenfield where he deposited a large amount of waste from a house clearance. What he didn't count on was that the incident was witnessed by two people who wrote down his registration number and reported it. He was found guilty in Magistrates Court but appealed to Crown Court. He lost his appeal and ended up being fined a total of £3083 including court costs.



**SHOPS SELLING MORE THAN 32KG OF BATTERIES PER YEAR MUST PROVIDE BATTERY RECYCLING FACILITIES IN THEIR STORE. THIS MEANS THERE ARE LOTS OF PLACES, SUCH AS SUPERMARKETS AND DIY STORES, WHERE YOU CAN TAKE YOUR OLD BATTERIES FOR RECYCLING. VISIT [WWW.TAKECHARGE.ORG.UK](http://WWW.TAKECHARGE.ORG.UK) TO FIND OUT WHERE YOU CAN DISPOSE OF YOUR BATTERIES.**



# Rossendale Clean Up Days

EACH MONTH WE ARE CONDUCTING A 'CLEAN UP DAY'. AN AREA OF ROSSENDALE IS SELECTED TO RECEIVE A BIT OF ATTENTION BY A MULTI-FACETED TEAM OF CLEANSING, WASTE/RECYCLING AND PARKS STAFF. THESE EVENTS HAVE PROVED SUCCESSFUL SINCE STARTING AT THE BEGINNING OF 2024 AND WE HAVE RECEIVED POSITIVE FEEDBACK FROM OUR RESIDENTS.

**PLEASE FEEL FREE TO REACH OUT IF YOU FEEL AN AREA OF ROSSENDALE REQUIRES THAT LITTLE BIT OF TLC!**



## Food Waste Collection to start in 2026

**EXTRA GOVERNMENT FUNDING WILL HELP COUNCILS TO GEAR UP WITH NEW FOOD WASTE CONTAINERS FOR HOMES AND SPECIALIST COLLECTION VEHICLES. WE WILL THEN PROVIDE SEPARATE WEEKLY FOOD WASTE COLLECTIONS FOR MOST OF ROSSENDALE'S HOUSEHOLDS FROM EARLY 2026.**

Over ten million tonnes of food is wasted every year in the UK, with much sent to landfill.

Separate collections of food waste from every household will prevent contamination of other waste which could be usefully recycled, as well as ensuring that food waste can be sent to anaerobic digestion facilities rather than needlessly lost to landfill.

Directing food waste to these plants will generate more sustainable energy to power homes and businesses, and cut down the more than 18 million tonnes of greenhouse gas emissions associated with this waste

**Further information to be supplied in early 2026**



# Rossendale Borough Council Environmental Services



## A GREAT WAY TO REPORT ANY CONCERNS WITH BINS OR FLY TIPPING!

Information about Rossendale Council's Environmental Services department who are responsible for bin collection, parks, grass cutting, street cleansing, fly tipping and other things.

We will keep you up to date with the latest news from the service.

You can also post queries about the above services which officers will respond to.



## We do commercial waste collections!

We offer a range of sizes of containers up to 1100 litres and sacks. We can collect your specific requirements whether General Waste, Glass Cans and Plastics, Paper and Card or a combination. Our service is flexible on frequency. We can collect either fortnightly (26x per year) or weekly (52x per year) as required.

Unlike many competitors collecting commercial waste, Rossendale Borough Council offer a straightforward, reliable service where the cost you see is the price you pay. We have no additional charges for bins or bin delivery, no cost for Waste Transfer Notices and no daily bin rental fees. There is no weight limit, so no shock overweight charges.\*

Contact: [trade@rossendalebc.gov.uk](mailto:trade@rossendalebc.gov.uk)  
for a free no obligation quote.

## WE NOW OFFER A COMMERCIAL WASTE COLLECTION SERVICE TO BUSINESSES LOCATED IN THE BOROUGH OF ROSSENDALE.

\*Offer is subject to location within the borough. Bins must not be contaminated by inappropriate waste such as builder's rubble, soil etc.



# Frequently Asked Questions

## WHAT HAPPENS IF MY BINS ARE MISSED?

Report within 24 hours on our website [www.rossendale.gov.uk](http://www.rossendale.gov.uk) to report any missed bins and we will return to empty them. However we cannot do so if they were not out by **6.45am** on the correct day or if your recycling/brown bin contains the wrong items. The vehicle may have gone to unload or may have changed its route so please wait until after **4.30pm** on the day of collection before calling.

## I NEED A NEW/REPLACEMENT BIN?

To request a replacement bin or to order a bin for a new property, please contact us by email or website. If you need a bin, whether your bin has been damaged, stolen or you do not have one there is an admin/delivery charge for the service (all bins remain the property of the Council). Each household is entitled to one of each type of bin unless additional capacity is authorised. In the case of new housing developments, the developer needs to contact the Council to arrange timely delivery of bins.

## WHAT IF MY PROPERTY IS NOT SUITABLE FOR WHEELED BINS?

The majority of households in Rossendale can accommodate bins. If we have agreed that your property is not suitable for wheeled bins, e.g. due to access or location problems, then we provide blue bags for glass, cans and plastics, an aqua sack for paper/cardboard and purple bags for refuse.

## I HAVEN'T GOT ENOUGH ROOM IN MY GREEN REFUSE BIN, WILL YOU TAKE EXTRA BAGS OF RUBBISH?

If you have a green bin and are recycling fully, then you should not need to put extra bags of rubbish out. If you do have extra, please contact us to discuss your needs further. Bins should always be presented with the lid closed. Rossendale Borough Council operates a closed lid and no side waste policy.

## MY BIN HAS NOT BEEN FULLY EMPTIED?

Any rubbish stuck at the bottom of the bin will not be manually removed by the refuse collectors. You can loosen the waste with a broom handle for your next collection or alternatively, dispose of this yourself at your local Household Waste Recycling Centre. To avoid this scenario please do not excessively compact the contents of your bin and avoid putting lightweight items (i.e. polystyrene) at the bottom.

## WHERE CAN I TAKE OTHER ITEMS THAT YOU DON'T COLLECT/RECYCLE?

Lancashire County Council currently has a Household Waste Recycling Centre in Rossendale which accepts a wide range of materials for recycling/disposal including electrical items, hazardous waste, DIY waste/rubble, batteries and bulbs. This facility is situated at **Duckworth Clough, Clough End Road, Haslingden BB4 5AN.**

## WILL BAD WEATHER AFFECT MY REFUSE/RECYCLING COLLECTION?

There may be times during bad weather when there is a delay or we cannot guarantee collection on your usual day. We will keep you informed through press releases, the Council website, Facebook and X (aka. Twitter).

Contact them on **0300 123 6701** for more information on opening times and access policy.

## CAN I RECYCLE TEXTILES?

For recycling your textiles; please refer to [www.rossendale.gov.uk/waste](http://www.rossendale.gov.uk/waste) for the current list of recycling bank locations provided by partner organisations in Rossendale.

## WHAT IF I AM UNABLE TO PRESENT MY BIN FOR COLLECTION?

We provide help emptying the bin(s) for people with confirmed mobility problems. Contact us and ask about our assisted bin collection service. All requests will be individually assessed to ensure that assistance is given to people who genuinely require it.



**PLEASE PRESENT YOUR BIN BY 6.45AM ON YOUR DAY OF COLLECTION**

# Your Dec 2024 to Mar 2026 Waste and Recycling Collection Calendar

**YOUR ALTERNATIVE COLLECTION DAY/S ARE SHOWN IN PINK AND ARE NOT ON YOUR USUAL DAY**

**YOUR NORMAL  
COLLECTION DAY IS  
TUESDAY**

**ZONE 1B**

## GENERAL WASTE



DECEMBER	24	10	24	
JANUARY	25	7	21	
FEBRUARY	25	4	18	
MARCH	25	4	18	
APRIL	25	1	15	29
MAY	25	13	27	
JUNE	25	10	24	
JULY	25	8	22	
AUGUST	25	5	19	
SEPTEMBER	25	2	16	30
OCTOBER	25	14	28	
NOVEMBER	25	11	25	
DECEMBER	25	9	23	
JANUARY	26	6	20	
FEBRUARY	26	3	17	
MARCH	26	3	17	31

## RECYCLING WASTE



DECEMBER	24	3	17	31
JANUARY	25	14	28	
FEBRUARY	25	11	25	
MARCH	25	11	25	
APRIL	25	8	22	
MAY	25	6	20	
JUNE	25	3	17	
JULY	25	1	15	29
AUGUST	25	12	26	
SEPTEMBER	25	9	23	
OCTOBER	25	7	21	
NOVEMBER	25	4	18	
DECEMBER	25	2	16	31
JANUARY	26	13	27	
FEBRUARY	26	10	24	
MARCH	26	10	24	

## GARDEN WASTE

**PLEASE CONSULT YOUR SEPARATE GARDEN WASTE  
STICKER FOR COLLECTION INFORMATION**

