



# COMMUNITY BULLETIN

September 2023

Welcome to your September Community Bulletin. We produce a monthly bulletin with our health and community partners to keep you updated about community activity across Rossendale. This will include information on community group activities, events, health information, grants and community training opportunities. We hope you will find the bulletin useful.

All published Community Bulletins are available at [https://www.rossendale.gov.uk/downloads/download/11317/coronavirus\\_community\\_bulletins](https://www.rossendale.gov.uk/downloads/download/11317/coronavirus_community_bulletins)

Feel free to share the bulletin with friends, community groups and on community group social media. If you have some information that you would like to share in the next bulletin, or you would like to be added to the e-mail distribution list, please contact us at [communitiesteam@rossendalebc.gov.uk](mailto:communitiesteam@rossendalebc.gov.uk)



## COMMUNITY ACTIVITIES



# ***The Rossendale 60s Festival 2023.***



**SATURDAY 9TH SEPTEMBER 2023. 10am - 5pm  
on Rawtenstall Town Square.**

## ***"SIXTIES on the SQUARE"***

***featuring:***

***Music, Dancing, Choirs, Artistes,  
Ukelele Band & MUCH more.***

**With Charities & Voluntary Organisation stands,  
Fairground rides for ALL the family.**

**FREE entry!**

**Created by The Rossendale 60s Festival Group in association with  
Rossendale Radio.**





# Rossendale Family Hubs Launch Event

## Save the Date



29 September 2023

**The Maden Centre, Rochdale Road, Bacup  
OL13 9NZ**

**10 - 6pm**

This event is for Partner Agencies, Children, Young People and their families.

There will be opportunities to drop in throughout the day to speak to partners, get service information and take part in taster activities.

Refreshments and lunch will be provided on the day.

Further information will be available early September.

[lancashire.gov.uk](http://lancashire.gov.uk)

Made with PosterMyWall.com



# What's coming up

at The Ashcroft



## September

Friday 29th Sep: Macmillan coffee morning

## October

Thursday 26th Oct: Big Screen Cinema Day, The Addams Family 2

Friday 27th Oct: Big Screen Cinema Night, Smile

Sunday 29th Oct: Family halloween party

## November

Sunday 26th Nov: Christmas Markets

## December

Saturday 16th Dec: Christmas Party Night

Sunday 17th Dec: Christmas Movie: Grinch (2018) & meet with Santa

Sunday 31st Dec: Family NYE Party

# WHAT'S COMING UP AT THE WHITAKER



## September

|                           |   |
|---------------------------|---|
| Saturday 2 <sup>nd</sup>  | Family Antics at the Museum                                     |
| Thursday 7 <sup>th</sup>  | Film Night: Jazz on a Summer Day                                |
| Thursday 7 <sup>th</sup>  | Paddy Campbell: Artist Walk & Talk                              |
| Sunday 10 <sup>th</sup>   | Rossendale 60's Festival  |
| Saturday 16 <sup>th</sup> | Bringing Out Hidden Histories Collections talk with our Curator |
| Thursday 21 <sup>st</sup> | Film Night: Everything Everywhere All At Once                   |
| Saturday 23 <sup>rd</sup> | End of show reflection with Paddy Campbell                      |
| Saturday 30 <sup>th</sup> | British Textile Biennial Opening Event                          |

To book or for any information please visit our website  
[thewhitaker.org](http://thewhitaker.org)





newground  
together

ACTIVE  
TOGETHER

# FREE GROUP WALKS

Please wear some suitable footwear/clothing and bring everything you need for walking. Remember some of the walks may be muddy in places.

**THURSDAYS @ 13:30 PM**

Meet at Haslingden

Community Link

Bury Road

Haslingden

BB4 5PG

Walk Around 1 hour

Within The

Local Area



For more information and to register onto the walk, please contact Mick on 07764244766 or alternatively you can email: [mick.duckworth@newground.co.uk](mailto:mick.duckworth@newground.co.uk)



St Anne's Church  
*lets build together* EDGESIDE



# BabySense

Tuesday 10-11:15am

6th September-25th October 2023

A relaxed, friendly baby group where parents/carers can socialise with others and bond with their baby. Featuring props, music, snacks, brews and bubbles!

Location St Anne's Church, Edgeside,  
Ashworth Road, BB4 9JE

For more information please email:  
[wellbeing@stannededgeside.co.uk](mailto:wellbeing@stannededgeside.co.uk)

£1 suggested donation per week

Booking essential:

[wellbeing@stannededgeside.co.uk](mailto:wellbeing@stannededgeside.co.uk)

It would be lovely to see you there!



# Bacup's Past - From Poverty to Progress

## HERITAGE WALKING TOUR

FREE EVENT

Join local historian Kathy Fishwick on a walk through time. Discover the bleak conditions that the people of Bacup had to endure including poor housing and sanitation. Later the town started to improve its building stock. Many of the 'blingy' & ornate buildings survive today; including a local treasure that's been restored to its former glory, The Alliance (Former Lancashire & Yorkshire Bank).



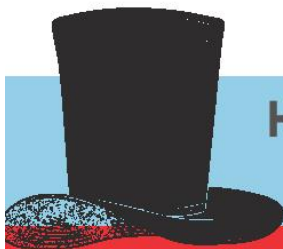
Saturday 23rd September



The Alliance Building  
(former Lancashire & Yorkshire Bank)



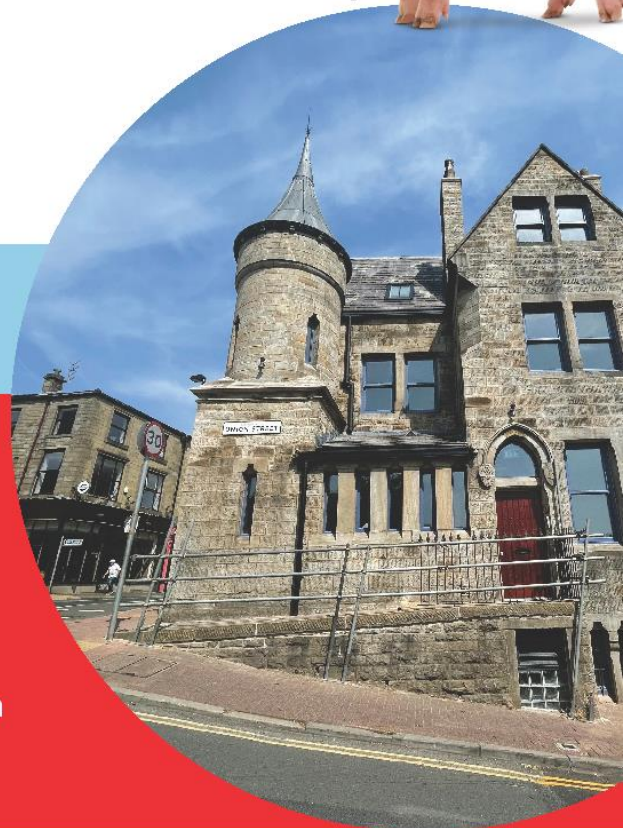
11:00 - 12:00



### HOW TO BOOK ON AND OTHER INFO

To find out more & book on contact  
Laabiyah Iqbal  
[Laabiyahiqbal@rossendalebc.gov.uk](mailto:Laabiyahiqbal@rossendalebc.gov.uk)

Please wear appropriate footwear and clothing. Don't forget to bring an umbrella







## What is a Men's Shed?

Men's Sheds are similar to garden sheds – a place to pursue practical interests at leisure, to practice skills and enjoy making and mending.

The difference is that garden sheds and their activities are often solitary in nature while Men's Sheds are the opposite.

They're about social connections and friendship building, sharing skills and knowledge, and of course a lot of laughter.



### Shed Hours

Weekdays

Mornings:

9:30 a.m. - 12:30 p.m.

Afternoons:

1 p.m - 4 p.m.



**To find out more: Call Andy on 07517118526**

# What do we do?



**We make things in our wood workshop**



**We go on trips**



**We help out in the community**



**We socialise every Wednesday 4pm - 6pm**



**We learn new skills**

***Come and join us!***

***at Haslingden Community Link,  
Bury Rd, Haslingden***

*Haslingden Community Link, Bury Road, Haslingden, Rossendale, Lancs BB1 5PG*

*Community Tel: 01706 230116 Fax: 01706 238351*

*Haslingden Community Link Company Limited by Guarantee No. 3612168 Registered Charity No. 1075926*





**St Peter's Church  
Haslingden**

**30<sup>th</sup> September**

**10:00 – 12:00**





# Community Coffee



**MORNING**

**LAST SATURDAY OF EVERY MONTH  
10AM-12PM  
ST PETER'S CHURCH, LANESIDE**

**POP IN FOR A COFFEE / CAKE AND A CHAT.  
CHILDRENS CRAFT AREA**



**BRINGING THE COMMUNITY  
TOGETHER**





Veterans in Communities

# Whats On in September

at the VIC Centre, Haslingden



- 1st - Friday - Art Group - 10am - 3pm
- 2nd - Saturday - Choir singing at Tesco Haslingden, 1pm - 3pm - Collectors needed.
- 5th - Tuesday - Art Group - 10am - 3pm
- 6th - Wednesday - Trip to Embsay Station and Bolton Abbey
- 7th - Thursday - Quiz - 1pm - 3pm
- 8th - Friday - Art Group - 10am - 3pm
- 12th - Tuesday - Art Group - 10am - 3pm
- 13th - Wednesday - Trip to National Memorial Arboretum
- 14th - Thursday - Quiz - 1pm - 3pm
- 15th - Friday - Art Group - 10am - 3pm
- 19th - Tuesday - Art Group - 10am - 3pm
- 21st - Thursday - Quiz - 1pm - 3pm
- 22nd - Friday - Art Group - 10am - 3pm
- 26th - Tuesday - Art Group - 10am - 3pm
- 27th - Wednesday - Trip to Sale Sharks
- 28th - Thursday - Quiz - 1pm - 3pm
- 29th - Friday - Art Group - 10am - 3pm

**Contact the VIC centre in Haslingden on 01706 833180 for more details**



St Anne's Church  
+5 0145 7000110  
EDGESIDE

# ST ANNE'S

## BABY & TODDLER GROUP

Wednesdays 10-11:30  
St Anne's Church,  
Ashworth Road,  
Edgeside

Come to join us for free play,  
craft, story time, song time  
& snack time plus tea/coffee

A lovely chance for children and  
their grown up to socialise and  
grow, together  
£1 per family per week

Booking essential:  
[wellbeing@stannedgeside.co.uk](mailto:wellbeing@stannedgeside.co.uk)





# Community Drop in

A white ceramic mug filled with coffee sits on a matching saucer. Two chocolate chip cookies are placed in front of the saucer. The background is a light, neutral color.

Join us on the second Friday of the month at our friendly community drop in. Come along and enjoy a brew, a chat and good company; everyone welcome!!

**2-4pm**

**Beaconsfield Conservative Club,  
Newchurch Road**

For more details email:  
[gillmorrell@rossendalecofe.church](mailto:gillmorrell@rossendalecofe.church)

ROSSENDALE METHODIST CHURCH  
AT CRAWSHAWBOOTH

# Tabletop Sale

Saturday 23rd September  
9am - 1pm

Entry £1 with a free drink  
with a tombola and raffle

RAKEFOOT METHODIST CHURCH  
YORK STREET, CRAWSHAWBOOTH



Tables available for £10  
Email [Rosendalemethodistcircuit@gmail.com](mailto:Rosendalemethodistcircuit@gmail.com)



St Anne's Church  
+5 244 1000+110  
EDGESIDE

# ST ANNE'S

## BABY & TODDLER GROUP

Wednesdays 10-11:30  
St Anne's Church,  
Ashworth Road,  
Edgeside

Come to join us for free play,  
craft, story time, song time  
& snack time plus tea/coffee

A lovely chance for children and  
their grown up to socialise and  
grow, together  
£1 per family per week

Booking essential:  
[wellbeing@stannedgeside.co.uk](mailto:wellbeing@stannedgeside.co.uk)





## **WHITWORTH RUSHCART PROCESSION AND CELEBRATIONS**

**Sunday 3 September 2023**

1pm: procession from Whitworth Museum, North Street car park, OL12 8RA to The Ashcroft, Market Street, Whitworth, OL12 8DP

1.15pm – 4.30pm: entertainments and refreshments at The Ashcroft

Family friendly event, all welcome

For further information: contact Rachel Hodson, Town Clerk, Whitworth Town Council (tel: 01706 852018 / email: [info@whitworth.gov.uk](mailto:info@whitworth.gov.uk))

From 1.15pm until 4.30pm, the car park of The Ashcroft will be cordoned off for stalls, entertainments, and performances from the various morris dancing troupes including the Whitworth Rushcart Men and the Britannia Coconutters, plus the Whitworth Vale and Healey Youth Band. St Bartholomew's Church will be providing traditional hot food, and the Ashcroft bar will be open for liquid refreshments. There will also be an Arts and Craft Fair, featuring a variety of artisan stalls in the Ashcroft main hall – there are a limited number of stalls still available, please contact the office for a booking form. There will also be rides, facepainting and other entertainments.

Whitworth's Rushcart history goes back hundreds of years; initially the celebration was linked into the cutting and collection of rushes to be strewn on the bare earth or stone flagged floor of the church as a form of insulation for the winter to come, taken to the church on the cart. Out of this grew a celebration which was enjoyed by the whole community. In the 1970s and 1980s the Rushcart was the highlight of the Whitworth Fair week; in recent times the week-long festivities have passed into history however the popularity of the Rushcart itself in Whitworth is strong.



### Location of HOD Events in Rossendale



For further details of individual events including accessibility and toilet facilities please check on [www.heritageopendays.org.uk](http://www.heritageopendays.org.uk)



## Heritage in Rossendale

Rossendale's heritage venues are proud to take part in England's largest community led festival of culture and heritage between 8<sup>th</sup> – 17<sup>th</sup> September 2023. See inside for details

**ALL EVENTS ARE FREE**

[www.heritageopendays.org.uk](http://www.heritageopendays.org.uk)



@heritageopendays



HeritageOpenDays



heritageopendays



@heritageopendays

### 1. 70 Years of Helmshore

#### Helmshore Textile Museums

Holcombe Road, BB4 4NP

Join Helmshore Local History Society, Haslingden Roots, Haslingden Old and New and the Helmshore Branch of the Royal British Legion to explore how the villages of Helmshore and Haslingden have changed since 1953 with this photographic exhibition. David Belfshaw and colleagues are also showing their model of Haslingden Railway Station.

Saturday 9th: 11am - 4pm

Sunday 10th: 11am - 4pm

### 2. St James Parish Church Haslingden

Church Street, Haslingden, BB4 5QU

The Church is open to view the stained glass windows and parish registers. The Café is also open and we have music from the Willis Organ and tours of the ringing chamber.

Saturday 9th: 10am - 4pm

### 3. Grane Mill Haslingden

Laneside Road, Haslingden, BB4 5PP

Built as a state of the art weaving mill when Cotton was King. A work in progress where volunteers are bringing this Edwardian Steam Mill to life with its steam engine, looms and other engineering exhibits

Saturday 9th: 11am - 4pm

Sunday 10th: 11am - 4pm

Saturday 16th: 11am - 4pm

Sunday 17th: 11am - 4pm

### 4. Weavers' Cottage

Rossendale Civic Trust

Falbar Fold, Bacup Road, Rawtenstall, BB4 7NW

Rawtenstall's Weavers' Cottage is a Loomshop at the heart an important group of buildings remaining from the early industrial area. Many original features can be seen, plus a special exhibition of our collection of local paintings and drawings.

Tuesday 12<sup>th</sup> - Thursday 14<sup>th</sup> : 11am - 4.30pm

### 5. Home Front Kitchen Grand Opening

#### Bacup Natural History Society

Bacup Natural History Museum, 24 Yorkshire Street, Bacup OL13 9AE

Visit this museum full of local military and industrial treasures. Experience life in Mrs Ibbitt's Shop and brand new home front kitchen. Plus a preview of Rossendale's part in the birth of professional football.

Sunday 17th: from 12 noon

### 6. A Bright Future for St Saviour's Church

#### St Saviour's Church

Stubbylee Lane, Bacup OL13 0BY

Hard hat tours of the Church with Valley Heritage - a chance to see inside and to discuss how the Church might be brought back into use.

Sunday 17th: 1.30 - 3.30pm

### 7. Rossendale Sole at Stubbylee Hall

#### Stubbylee Hall

Stubbylee Lane, Bacup OL13 0DE

Join Valley Heritage for mini guided tours of the Hall and see the beginnings of a new 'Rossendale Sole' footwear collection with its sewing machines, textiles and tools from the footwear industry.

Sunday 17th: 10am - 12 noon

### 8. Whitworth Rushcart

Whitworth Museum, North Street, Whitworth OL12 8RA

Although not a HOD event, the annual Whitworth Rushcart Celebrations will start at Whitworth Museum and arrive at The Ashcroft.

Sunday 3rd: 1pm

### 9. Whitworth Museum

Whitworth Museum, North Street, Whitworth OL12 8RA

The life of famous Whitworth Doctors will be the Museum's feature alongside its regular exhibits from everyday village life.

Saturday 9<sup>th</sup>; Sunday 10<sup>th</sup> and Saturday 16<sup>th</sup>: 11am - 4pm





# St James' Church

Haslingden  
*since 1284*

## HERITAGE OPEN DAYS 2023

**Saturday 9<sup>th</sup> September, 10-4**

### *Church open*

- ❖ **Self-guided tours of the church building  
*for children too!***
- ❖ **Archive registers –including Grane & Stonefold**
  - ❖ **Ancient Burial Records for Haslingden**
- ❖ **Visit the Ringing Chamber and admire the views**
  - ❖ **Bell-ringing demonstrations**
  - ❖ **Photographs & Artefacts**
  - ❖ **Stained Glass**

*Refreshments on sale in our café*

**More information**

[heritageopensdays.org.uk](http://heritageopensdays.org.uk)

[facebook.com/StJamesHaslingden](https://facebook.com/StJamesHaslingden)

## **COMMUNITY INFORMATION**



# COMPUTER DROP-IN

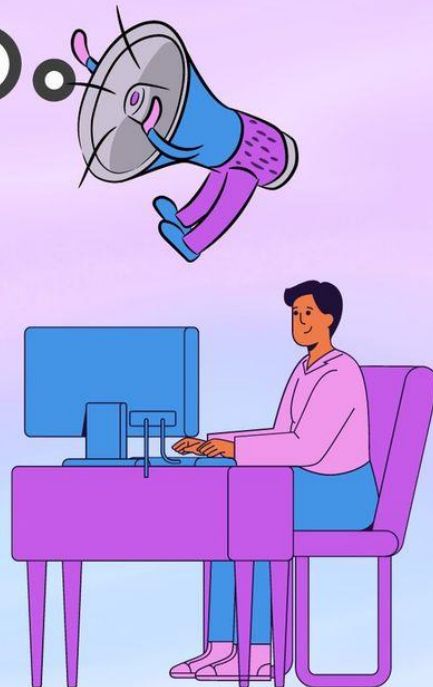


BURNLEY ROAD  
BACUP, OL13 8AB

☎ 01706 874111

## LEARN WHAT YOU NEED!

- COMPUTER BASICS
- INTERNET BASICS
- OFFICE PROGRAMS
- MORE INTERNET SKILLS
- ONLINE SAFETY
- FINDING A JOB ONLINE
- IMPROVING YOUR HEALTH ONLINE
- MANAGING YOUR MONEY ONLINE
- CV WRITING



**STARTING TUESDAY 12TH SEPTEMBER**

**8 WEEK COURSE**

**1PM - 3PM**





## **PRESS RELEASE**

Homewise is working with Hyndburn, Ribble Valley and Rossendale Borough Councils to help make sure your home is warm and energy efficient.

We are offering FREE gas fire and gas boiler servicing to owner occupiers over 65 living in Hyndburn, Ribble Valley, and Rossendale, so get in touch with us today **WHILE FUNDS LAST.**

Homewise is an independent Home Improvement Agency which provides a comprehensive, impartial help and advice service on all aspects of home improvements, adaptations, repairs, and maintenance with particular emphasis on older, disabled and/or disadvantaged people.

### **To apply**

Contact **Homewise** on **01254 232249** or email [info@homewisesociety.org.uk](mailto:info@homewisesociety.org.uk) or visit our offices at **Unit 3 Allied House, Burnley Road, Altham.**



## **HOMEWISE**

### **Rossendale Security scheme**

Feel safer and more secure in your own home by taking advantage of our security scheme.

For anyone 65 or over, Homewise can provide and fit **FREE OF CHARGE** door chains, door alarms, spyholes, memo minders, etc. to help you protect yourself and your property.

Our trained staff will carry out a survey and advise on any necessary security measures. The required products will then be provided & fitted by our joiners.

If you would like to take advantage of this service, please telephone 01254 232249, email [info@homewisesociety.org.uk](mailto:info@homewisesociety.org.uk) or call in to our offices at Unit 3 Allied House, Burnley Road, Clayton BB5 5TW

Opening times are 8.30 a.m. to 4.00 p.m. Monday to Friday.





## THE KING'S AWARD FOR VOLUNTARY SERVICE 2024



Celebrating the outstanding work of local volunteer groups across the UK.

Nominations for the 2024 of The King's Award for Voluntary Service are now open!

Every day, millions of people across the UK are making a difference by volunteering. Each year, outstanding examples of this work are celebrated through the King's Award for Voluntary Service (KAVS).

Created in 2002 to celebrate Queen Elizabeth II's Golden Jubilee and previously known as The Queen's Award for Voluntary Service (QAVS), the Award has been shining a light on the fantastic work of voluntary groups from all across the UK for many years.

Equivalent to an MBE, KAVS is the highest Award given to local voluntary groups in the UK, and they are awarded for life.

Find out more about how to nominate via this link -

<https://kavs.dcms.gov.uk/>

Deadline: 15th September 2023



## **BECOME A HOUSEHOLDER WITH M3 PROJECT**

"That first night it felt so good to sleep in a bed I could sleep in the next day..."

Do you have a spare room? Want to earn an extra income? Want to help young homeless people?

Provide a home from home for a young person today!

M3 Project is looking for Householders living in East Lancashire, including Burnley, Hyndburn and the Ribble Valley, who have a spare room and would like to help a homeless young person.

Message us at [info@rossendalem3.org](mailto:info@rossendalem3.org) or call 01706 216600

Spare room?

Want to help a homeless young person?

Earn an extra income?

Single people, couples, families

Your role would be to provide accommodation in your home to a young person, along with some support.

**M3 PROJECT  
CONTACT:**  
Facebook  
M3\_Project\_Ltd

[www.rossendalem3.org](http://www.rossendalem3.org)



PEP Enterprise is a not-for-profit organisation whose focus is to create a better society by driving integration of marginalised communities and creating leadership roles for those lacking representation.

We are conducting this survey to gain a better insight regarding the challenges and barriers faced by those who are part of the Black, Asian, Minority Ethnic, and Refugee (BAMER) community. The survey will cover issues you feel you or your communities may face related to 6 key areas:

- Education
- Employment
- Health
- Media/Music/Art
- Politics/Law
- Sport

The results from this survey will be used to help create an online platform offering BAMER communities advice, guidance, mentorship and support in the 6 key areas listed above. This is so you can become strong leaders who are able to influence positive change, and to have your interests better represented across various sectors of society. Therefore, the information you provide will be crucial in helping us in shaping future services that meet your needs, and help you achieve your goals.

Access the survey using the QR code below. The survey is entirely anonymous and will take approximately 5 minutes to complete.







# Rossendale Dementia Information & Wellbeing Event

If you are living with dementia, care for someone who is, or just want to know more - come and join us for a brew and to find out about services, activities and products for people living with dementia, and their Carers



Friday  
22nd September  
11am-6pm

Longholme Methodist Church Hall  
Bacup Rd, Rawtenstall BB4 7NE



For more information contact us: [hello@beaconrossendale.org.uk](mailto:hello@beaconrossendale.org.uk)





**East Lancashire Hospitals**  
NHS Trust

# People's Mental Health

**Concerned about your Mental Health?  
Are you under 18 or concerned about  
someone under 18?**

Log on using the hyperlink - <https://nhs.vc/HLSC/CAMHS>

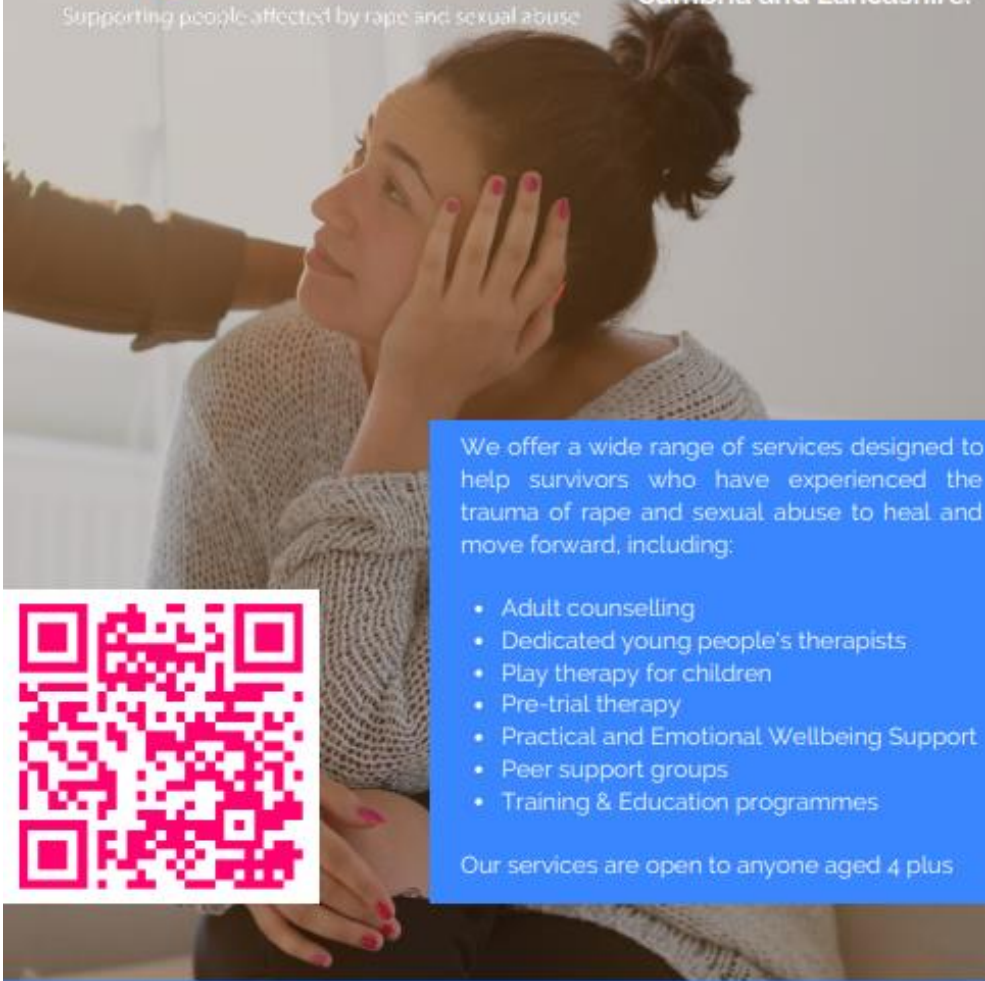
Enter the word "drop" as the first name and "in" as the second name followed by your date of birth. You will then enter our virtual waiting area where we will collect you.

**Safe | Personal | Effective**



Supporting people affected by rape and sexual abuse

Know someone who might need our services? We have safe spaces across Cumbria and Lancashire.



We offer a wide range of services designed to help survivors who have experienced the trauma of rape and sexual abuse to heal and move forward, including:

- Adult counselling
- Dedicated young people's therapists
- Play therapy for children
- Pre-trial therapy
- Practical and Emotional Wellbeing Support
- Peer support groups
- Training & Education programmes

Our services are open to anyone aged 4 plus



#### How to refer someone to us?

We have an easy online Referral service. Simply visit our website: [www.birchalltrust.org.uk](http://www.birchalltrust.org.uk) or, scan the QR code above. Click the 'Refer Here' button at the top of our web page and click 'Agency Referral'.

#### Get In Touch!

[enquiries@birchalltrust.org.uk](mailto:enquiries@birchalltrust.org.uk)  
[www.birchalltrust.org.uk](http://www.birchalltrust.org.uk)

Registered Charity No: 1109637  
Registered Company No: 5424196



**Are you a Community Group, Charity, Dementia Café,  
Care Home or Business providing services or products  
for people living with dementia?**

As part of World Alzheimer's month, Beacon Dementia and Wellbeing are holding the second Rossendale Dementia Information Event. This free 'marketplace' event will promote the services, activities and aids available for people living with dementia, their carers and families.

**Friday 22 September 2022**

**11am - 6pm, Longholme Methodist Church, Rawtenstall, BB4 7NE  
(fully accessible venue)**

Kindly funded by The Rossendale Community Partnerships, the event will bring services and organisations together in one place to help people living with dementia, their carers and families easily find the help and information they need.

We hope you can join us!



**For more information and to reserve a stall,  
please email:  
[vicki@beaconrossendale.org.uk](mailto:vicki@beaconrossendale.org.uk)**

THE  
FILO  
PROJECT  
*collaborative care*

The Filo Project offers high quality day care for small groups of older people.

We support individuals who are socially isolated, many experiencing symptoms associated with moderate dementia. Each day is provided by a host, and takes place in the intimate setting of a host's own home. This warm and welcoming environment is key and no client is overwhelmed by a large group.



*What a difference a day makes...*

*"The Filo Project is really blazing a trail in elderly social care. They demonstrate that through developing close, caring and creative relationships, it is possible to bring the lost and lonely back to life. It is this kind of demonstration that helps build the more caring society so many of us crave."*

Kath - Daughter of client

Apart from having a home-cooked lunch, what occurs in each group varies, and very much depends on who is in a group, and what their capacities, preferences and personalities are. It is a bespoke service. However, the focus of any day is to provide the opportunity for meaningful socialising.

**It is a day out with friends.**

At a stage of life where many older people often find themselves excluded.

**The Filo Project provides a time and space to feel at ease and be valued.**

A bi-product of our service is that carers can enjoy regular and extended respite. Transport is also provided.

*Putting 'social' at the heart of social care*

☎ 0333 939 8225 🌐 [www.thefiloproject.co.uk](http://www.thefiloproject.co.uk)





*"I was surprised to see the difference it made to my husband. He came home noticeably more alert and cheerful. I feel it brought him closer to his old way of life and he felt less isolated. Also doing something independently from me was important as well. Of course it was lovely for me to have some much needed time off too."*

*"Although mum is a hugely sociable, people-loving person, she can really struggle in group situations. The Filo's nurturing approach with an intimate circle of regular companions is perfect for her; she's really come out of her shell and you can see her old fun-loving self coming back. Prior to attending The Filo Project my mum's memory loss caused some really upsetting changes. The intensely fashion-conscious and creatively curious person I adored became dishevelled, disinterested and lost. Once we'd natter for hours; now she could barely hold a few minutes of conversation without lots of repetition, or remember old friends, or what day it was. Now, mum always sounds lively and engaged on the phone: I can even chat happily for 10 minutes, with only a few repetitions. And, what's more, she's becoming conscious of her appearance again, which was always so important to her."*

**THE  
FILO  
PROJECT**



0333 939 8225  
www.thefiloproject.co.uk  
info@thefiloproject.co.uk



Community Interest Company. Registered Company Number 9079916



## FUNDING



### Lancashire Community Food Grant Scheme

The Community Food Grant Scheme is a small grants programme for community groups within Lancashire. The scheme is aimed at local organisations within the voluntary, community and faith sector that deliver projects to tackle food insecurity.

Groups can apply for up to £2,000 to support projects that provide emergency food and / or tackle food insecurity, focusing on supporting those most in need.

The full list of eligible expenditure Lancashire Community Food Grant Scheme funding can be used on is:

Equipment

Venue hire

Training

Volunteer expenses

Food

Projects and activities that build resilience for those accessing community food organisations.

Organisational staff costs

More information and application details on the Lancashire County Council website at

<https://bit.ly/47ztk7J>

## Suicide prevention funding launched

The Department of Health and Social Care has today (25 August) launched a £10 million Suicide Prevention Grant Fund for 2023-24 to 2024-25.

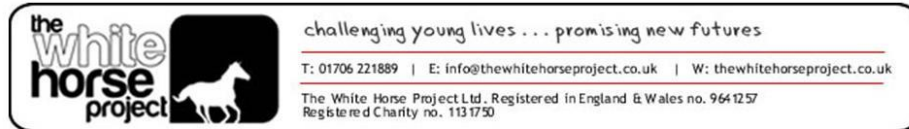
The purpose of the fund is to support suicide prevention in the voluntary and community sector and help them meet additional demand for services. It will also support the delivery of new, preventative activity that can help to prevent suicides and save lives.

The application period is from today (25 August) until 1 October. Applications must be made online via the Find a Grant portal, unless exceptional circumstances apply.

Guidance on the fund can be found on GOV.UK. The guidance provides full details of the objectives of the fund, the eligibility criteria, and what the application process involves.

DHSC will also be holding 'Meet the Funder' webinars to answer any questions applicants may have. Interested applicants should email [SuicidePreventionGrant@dhsc.gov.uk](mailto:SuicidePreventionGrant@dhsc.gov.uk) to register their interest.

# VOLUNTEERING AND JOB OPPORTUNITIES



## ADVERTISEMENT

The White Horse Project works with young people aged 11 -18 years in Rossendale, Lancashire and wishes to appoint a

### **GENERAL MANAGER**

17 hours per week, flexible, 38 weeks per year, rising to 19 hours per week in year 3. This may include working some evenings each term. This is a three-year Fixed Term Contract funded by The National Lottery Community Fund.

### **Salary**

£ 13,600 p.a. plus 8% non-contributory pension

### **Main purpose and scope of the role**

This is an exciting opportunity to lead a small team to develop this local charity and make a greater difference to the lives of local young people. You will contribute to the vision and strategic plans of the trustees, and drive our work forward to increase the number of young people we engage with and the quality and breadth of services we provide.

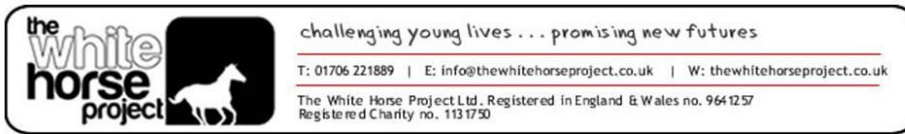
Appointment to this post is subject to successful application to the Disclosure & Barring Service.

Application pack available from [jill.bevan@thewhitehorseproject.co.uk](mailto:jill.bevan@thewhitehorseproject.co.uk) or telephone 01706 221889

Closing date: Saturday 9 September 2023 at 7.00 pm







## ADVERTISEMENT

The White Horse Project works with young people aged 11 -18 years in Rossendale, Lancashire and wishes to appoint

### **SESSIONAL YOUTH WORKER/WORKERS**

**Two-hour sessions, primarily weekday evenings**

**£15 per hour**

***We are seeking enthusiastic people to support and encourage young people in workshops led by professionals, held mainly in the former Newchurch Methodist Church. They would act as role models and build positive relationships with the young people. Limited day time sessions also available. Experience preferable***

These posts are funded by The National Lottery Community Fund

Appointment is subject to successful application to the Disclosure & Barring Service.

Application pack available from [jill.bevan@thewhitehorseproject.co.uk](mailto:jill.bevan@thewhitehorseproject.co.uk) or telephone 01706 221889

Closing date: Saturday 9 September at 7.00 pm

