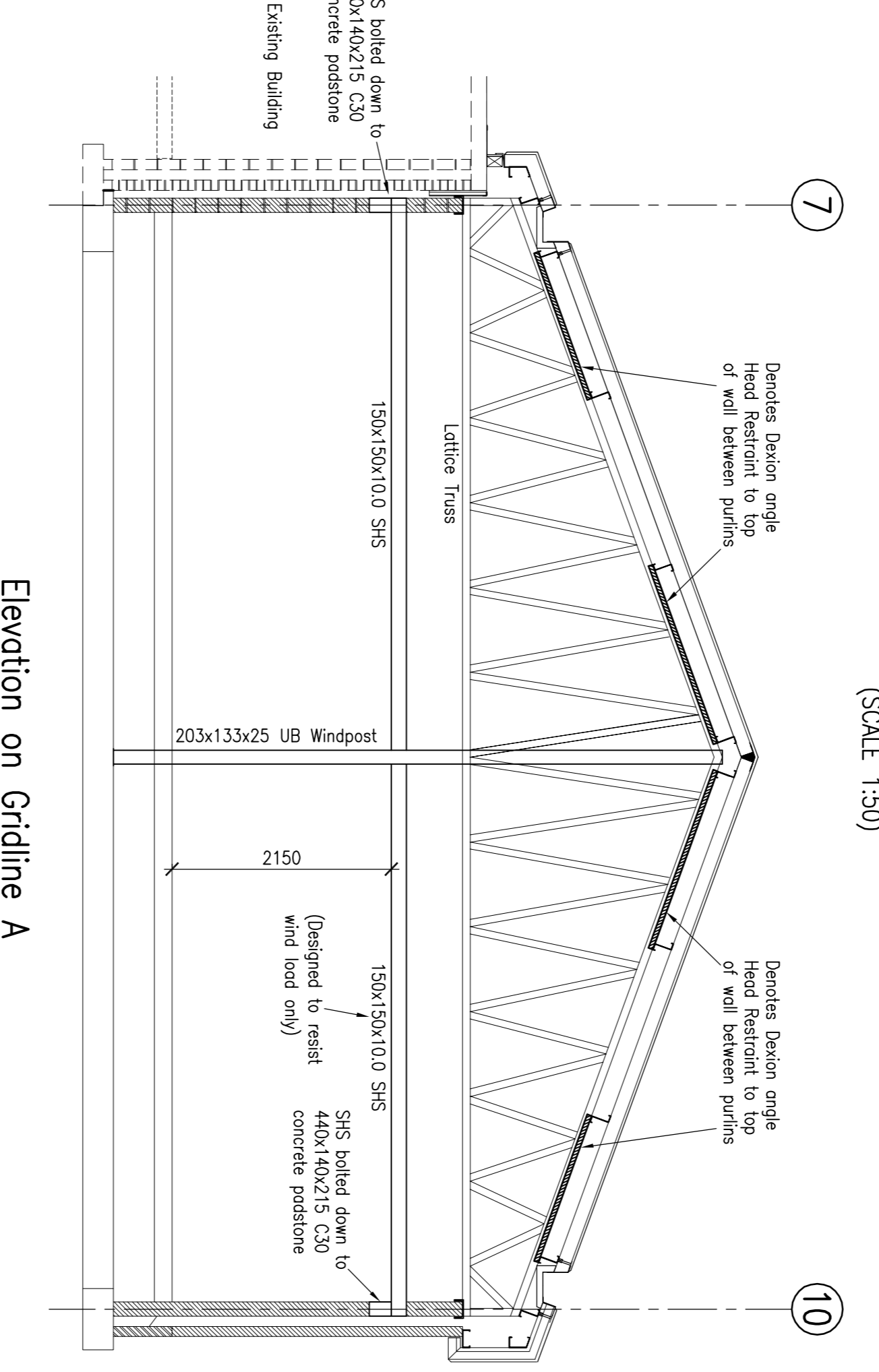
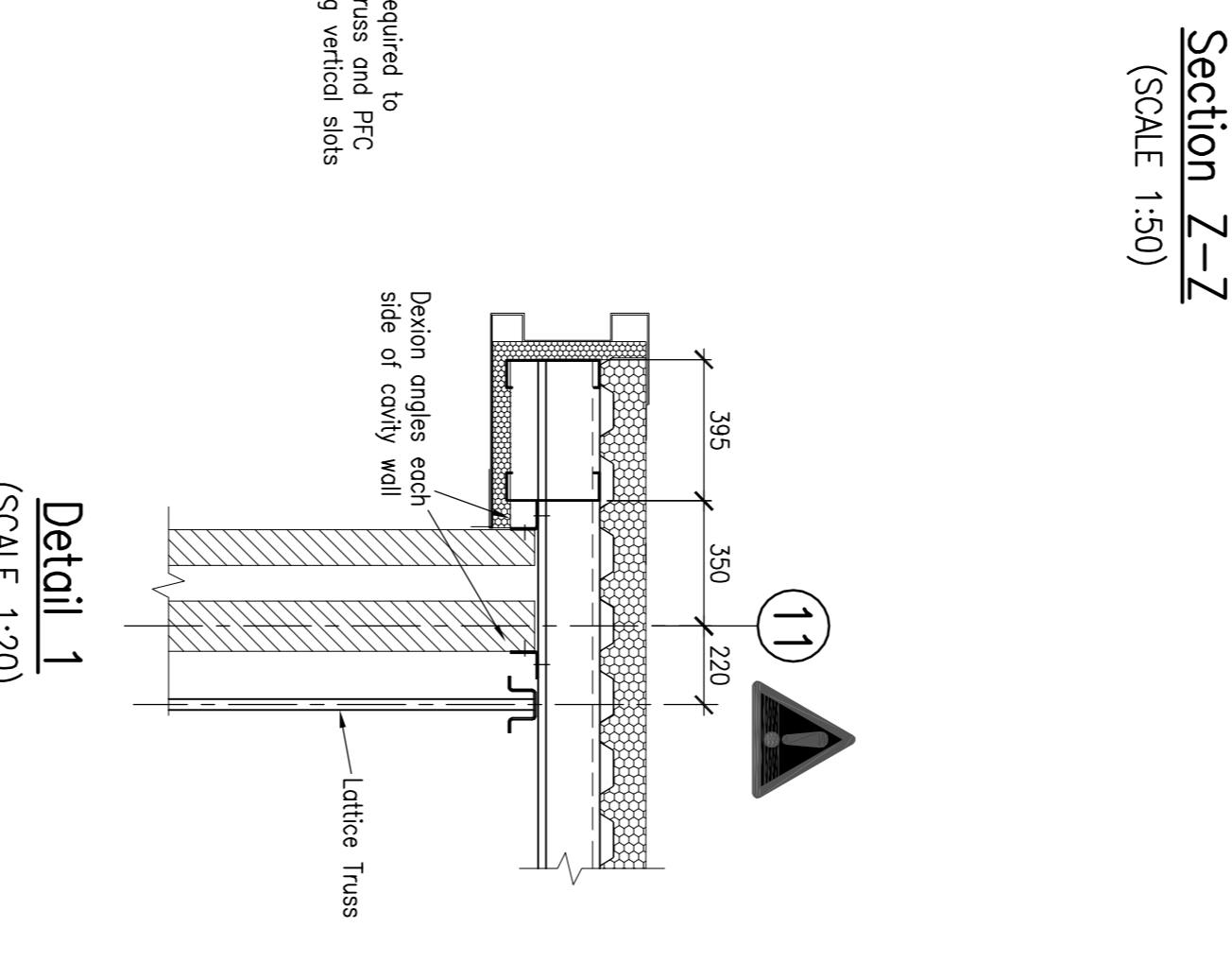
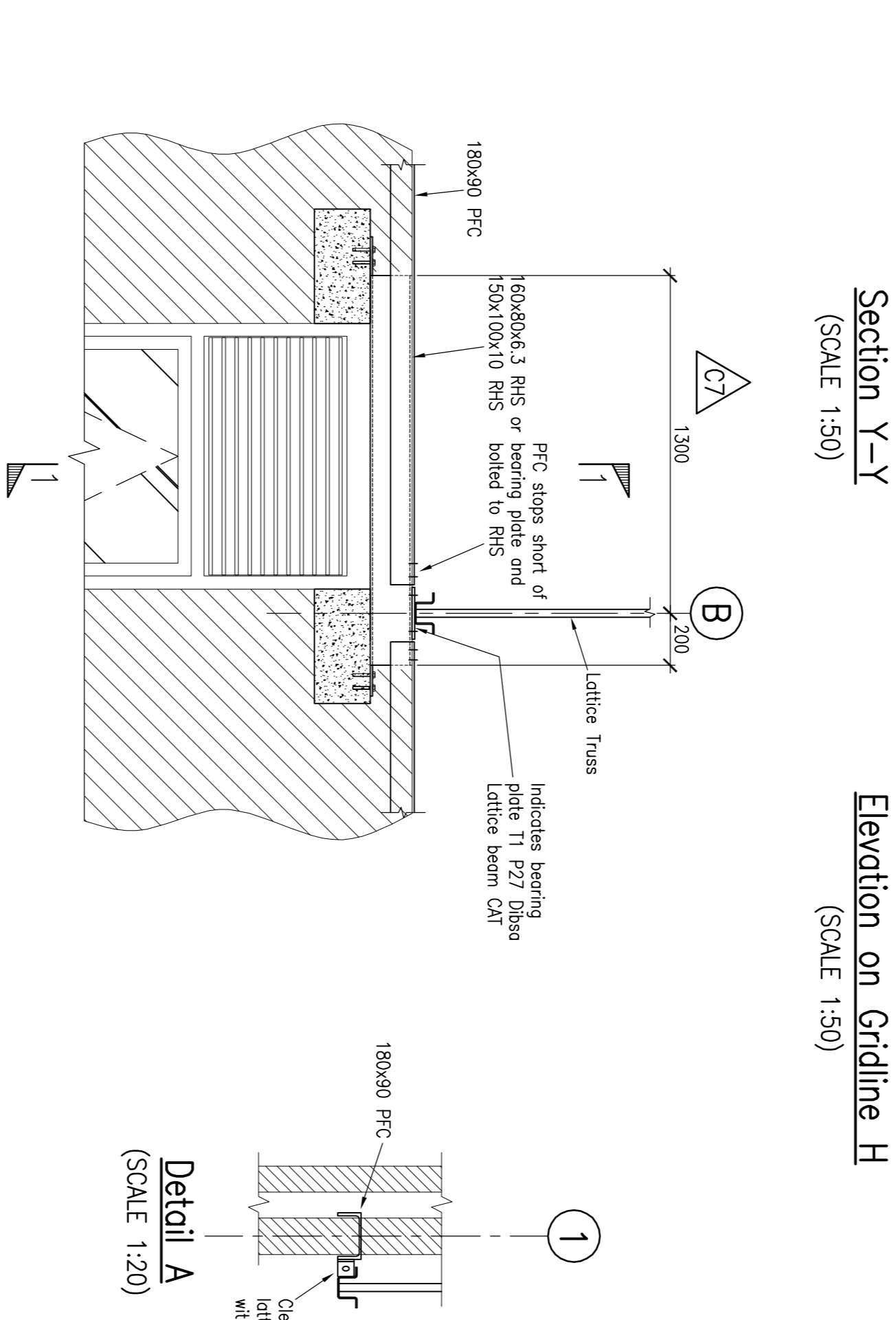


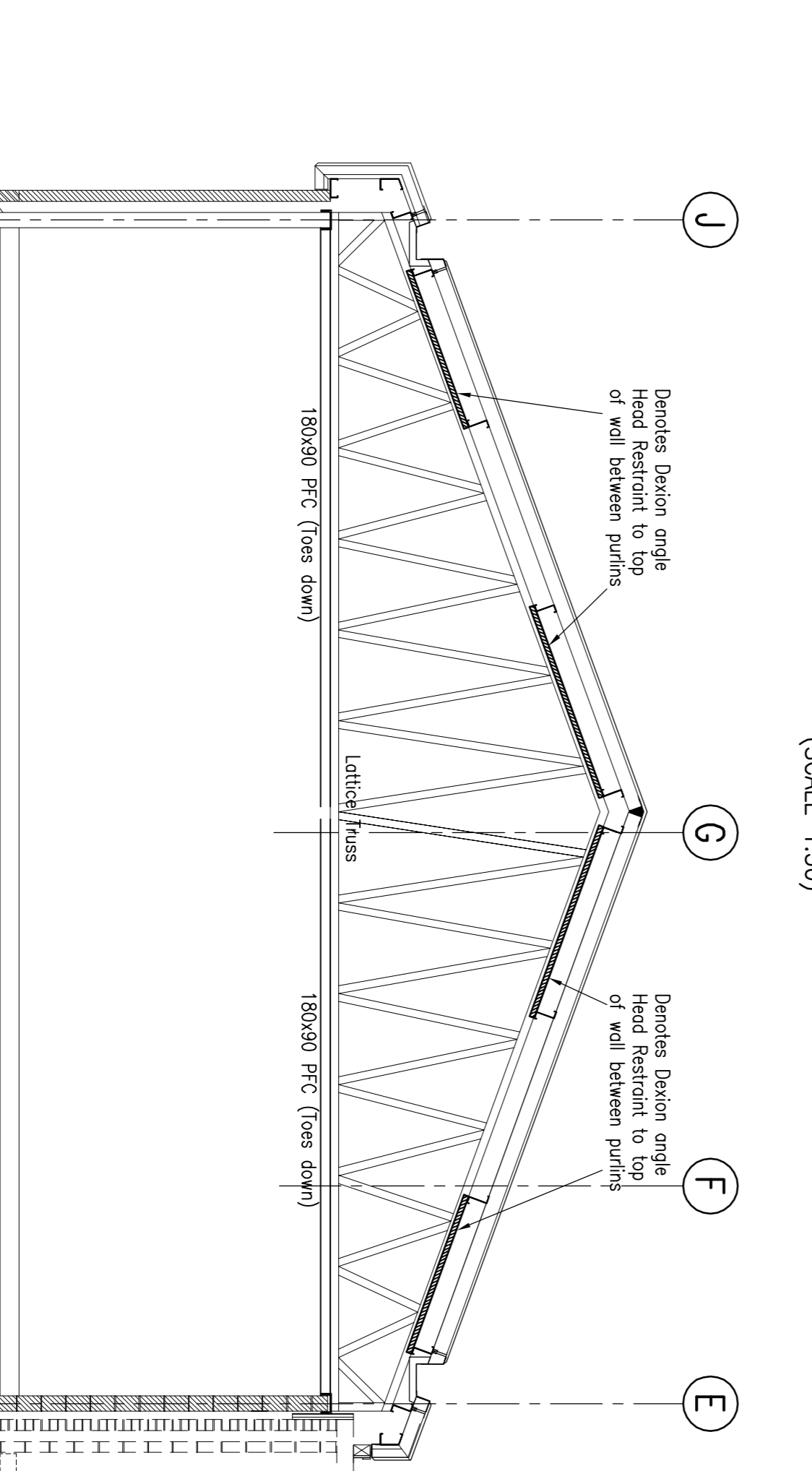
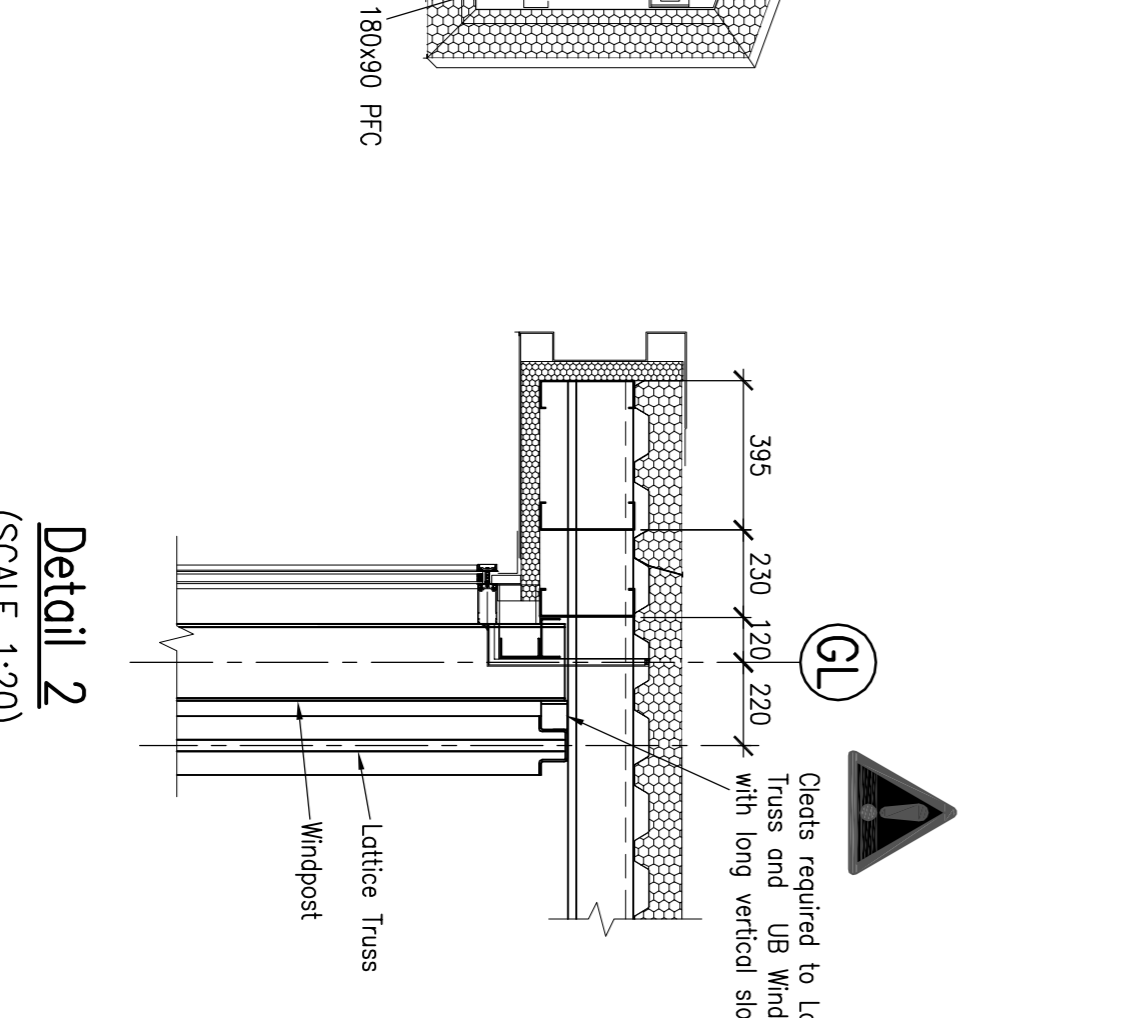
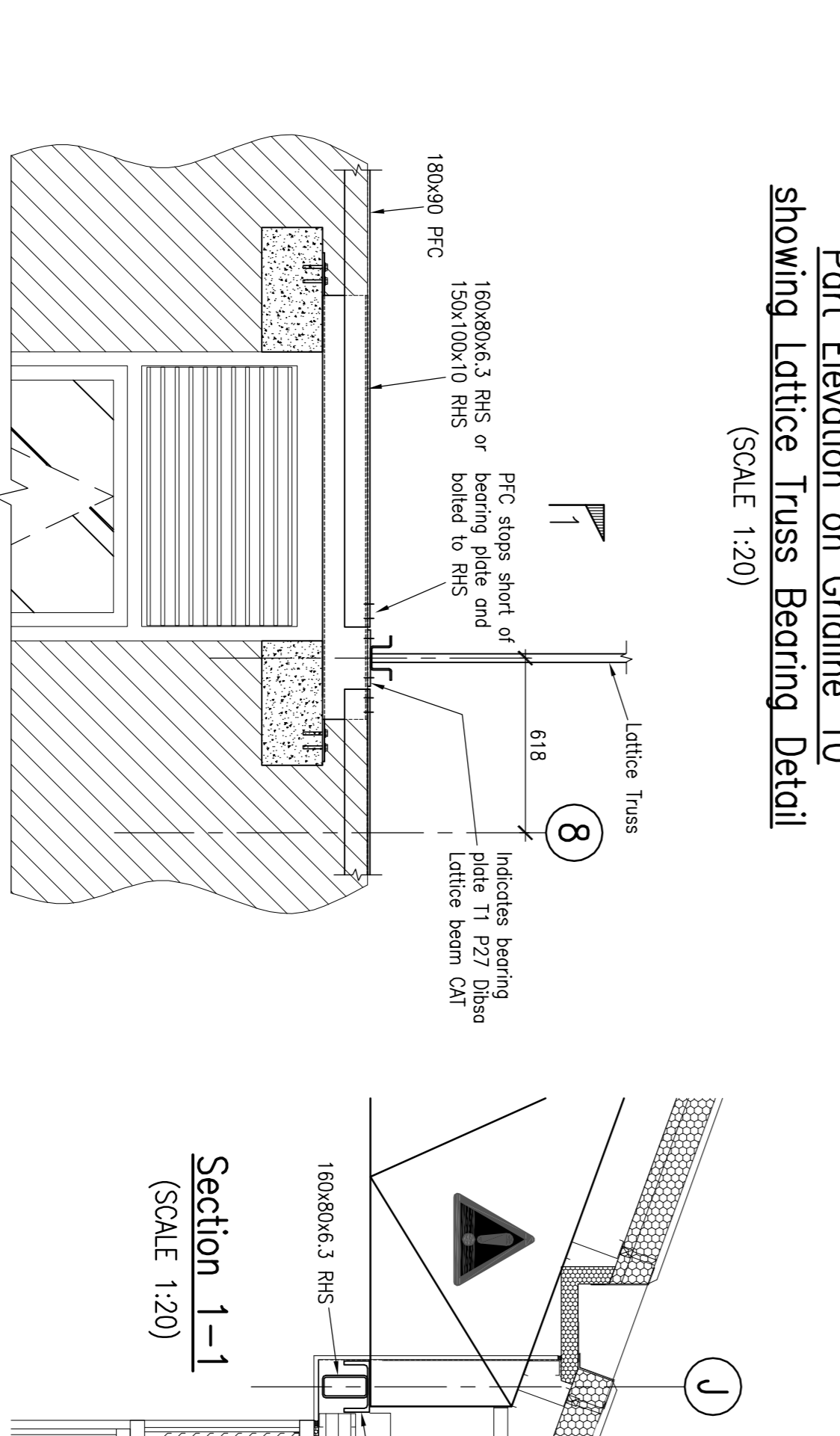
**NOTES**

- This drawing is copyright and the property of Shepherd Gilmour and must not be copied in whole or part without their prior written permission.
- This drawing is to be read in conjunction with the appropriate Architect's and M&E Engineer's drawings together with any other relevant Shepherd Gilmour drawings, sketches and specifications etc.
- This drawing must not be scaled, the Contractor must report any dimensional discrepancies and errors or omissions to the Engineer prior to construction commencing.
- Significant Risks (as described in the 2007 CDM Regulations) are listed in the Pre-Construction Information Register.
- All steelwork on this project is to be grade S275 to BS EN 10025 unless noted otherwise. Refer to Shepherd Gilmour Steelwork Specification for subgrades.
- Refer to Shepherd Gilmour Steelwork Specification for subgrade of all steelwork noted on the drawings as external.
- All hollow section steelwork (RHS, RHS SHS) is to be hot finished, grade S355J2H to BS EN 10210 unless noted otherwise.
- The assumption is that all steelwork will be erected by a competent Contractor experienced in the erection of steelwork designed to allow columns to be free standing during erection. It is essential that the Contractor provides bracing, slaying or guy ropes to provide stability in the temporary condition to ensure stability and the temporary members shall not be removed until such time as they are replaced by permanent bracings/guy frames and associated floor/roof diaphragms or bracing.
- It has been assumed that all erection will take place utilising mobile/tower cranes and mobile access platforms. Any specialised erection requirements are indicated in the Risk Assessments.
- The Steelwork Subcontractor is to design all connections, including baseplates, using connection loads/moments, to be provided by Shepherd Gilmour after Tender.
- All bolts to be minimum M16 Grade 8.8.
- Refer to Shepherd Gilmour foundation drawings for top of concrete levels for foundations.
- Drawings marked "Preliminary", "Comment" or "Tender" shall not be used for construction.
- Born to beam connections using plates welded across flange lips without stiffeners back to the web shall not be permitted.
- In all instances where windposts or deposits connect at the head to floor beam or rather a sliding head connection shall be provided to allow 30mm deflection of the beam/rafter.
- The Steelwork Subcontractor is to provide and fix any anti-rag systems for purlins and side rails required by the Manufacturer's details.
- The Steelwork Subcontractor is to provide any cleader angles shown on the drawings as By Steelwork Subcontractor. Any additional cleader angles/secondary steelwork etc. required is to be supplied by the Cleader. The Cleading Subcontractor is to be sent copies of the steelwork drawings when being invited to tender to allow him to assess the requirements for cleaders etc.
- Refer to Architects drawings for all fire protection requirements to structural steelwork.



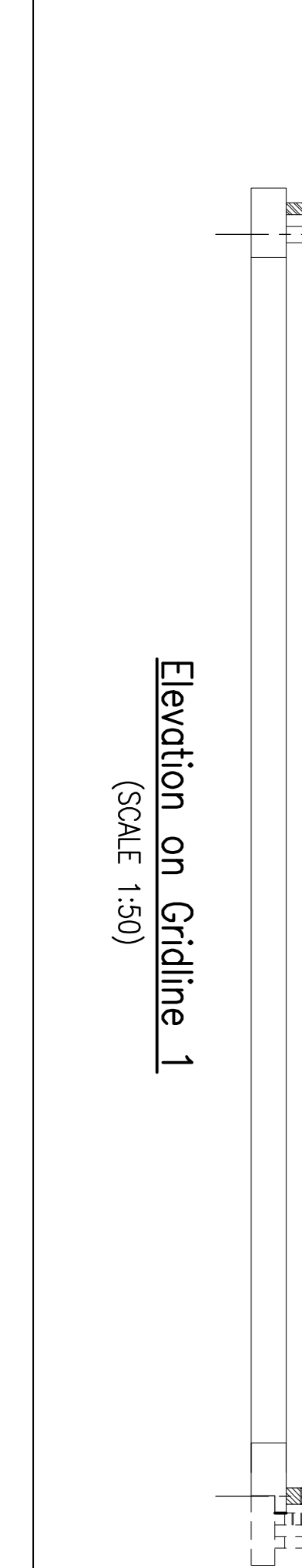
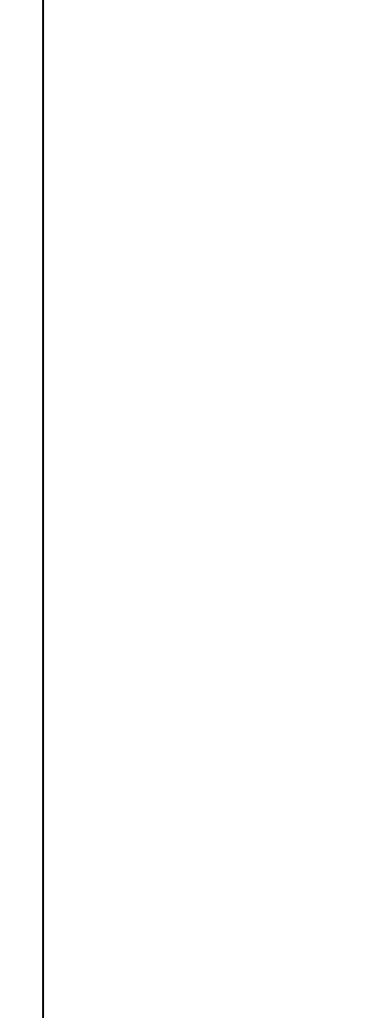
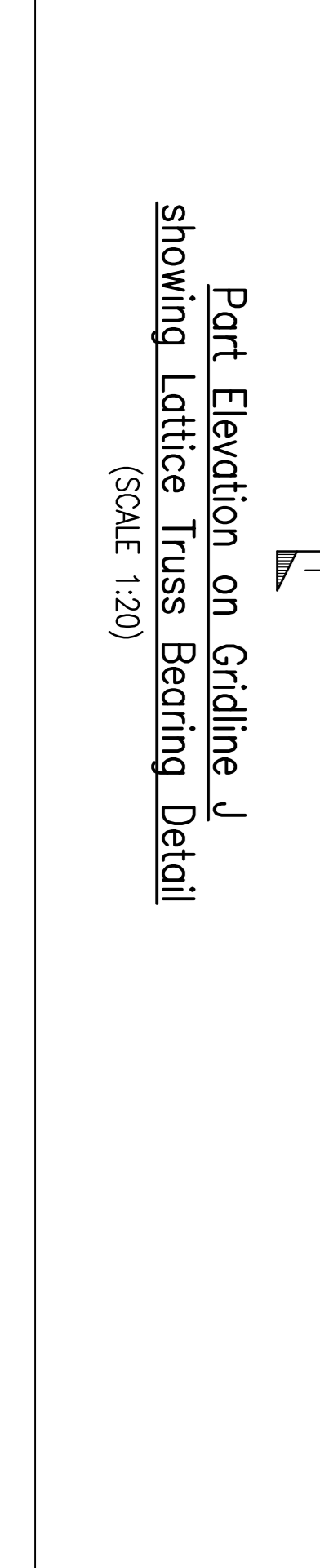
**NOTES**

- This drawing is copyright and the property of Shepherd Gilmour and must not be copied in whole or part without their prior written permission.
- This drawing is to be read in conjunction with the appropriate Architect's and M&E Engineer's drawings together with any other relevant Shepherd Gilmour drawings, sketches and specifications etc.
- This drawing must not be scaled, the Contractor must report any dimensional discrepancies and errors or omissions to the Engineer prior to construction commencing.
- Significant Risks (as described in the 2007 CDM Regulations) are listed in the Pre-Construction Information Register.
- All steelwork on this project is to be grade S275 to BS EN 10025 unless noted otherwise. Refer to Shepherd Gilmour Steelwork Specification for subgrades.
- Refer to Shepherd Gilmour Steelwork Specification for subgrade of all steelwork noted on the drawings as external.
- All hollow section steelwork (RHS, RHS SHS) is to be hot finished, grade S355J2H to BS EN 10210 unless noted otherwise.
- The assumption is that all steelwork will be erected by a competent Contractor experienced in the erection of steelwork designed to allow columns to be free standing during erection. It is essential that the Contractor provides bracing, slaying or guy ropes to provide stability in the temporary condition to ensure stability and the temporary members shall not be removed until such time as they are replaced by permanent bracings/guy frames and associated floor/roof diaphragms or bracing.
- It has been assumed that all erection will take place utilising mobile/tower cranes and mobile access platforms. Any specialised erection requirements are indicated in the Risk Assessments.
- The Steelwork Subcontractor is to design all connections, including baseplates, using connection loads/moments, to be provided by Shepherd Gilmour after Tender.
- All bolts to be minimum M16 Grade 8.8.
- Refer to Shepherd Gilmour foundation drawings for top of concrete levels for foundations.
- Drawings marked "Preliminary", "Comment" or "Tender" shall not be used for construction.
- Born to beam connections using plates welded across flange lips without stiffeners back to the web shall not be permitted.
- In all instances where windposts or deposits connect at the head to floor beam or rather a sliding head connection shall be provided to allow 30mm deflection of the beam/rafter.
- The Steelwork Subcontractor is to provide and fix any anti-rag systems for purlins and side rails required by the Manufacturer's details.
- The Steelwork Subcontractor is to provide any cleader angles shown on the drawings as By Steelwork Subcontractor. Any additional cleader angles/secondary steelwork etc. required is to be supplied by the Cleader. The Cleading Subcontractor is to be sent copies of the steelwork drawings when being invited to tender to allow him to assess the requirements for cleaders etc.
- Refer to Architects drawings for all fire protection requirements to structural steelwork.



**NOTES**

- This drawing is copyright and the property of Shepherd Gilmour and must not be copied in whole or part without their prior written permission.
- This drawing is to be read in conjunction with the appropriate Architect's and M&E Engineer's drawings together with any other relevant Shepherd Gilmour drawings, sketches and specifications etc.
- This drawing must not be scaled, the Contractor must report any dimensional discrepancies and errors or omissions to the Engineer prior to construction commencing.
- Significant Risks (as described in the 2007 CDM Regulations) are listed in the Pre-Construction Information Register.
- All steelwork on this project is to be grade S275 to BS EN 10025 unless noted otherwise. Refer to Shepherd Gilmour Steelwork Specification for subgrades.
- Refer to Shepherd Gilmour Steelwork Specification for subgrade of all steelwork noted on the drawings as external.
- All hollow section steelwork (RHS, RHS SHS) is to be hot finished, grade S355J2H to BS EN 10210 unless noted otherwise.
- The assumption is that all steelwork will be erected by a competent Contractor experienced in the erection of steelwork designed to allow columns to be free standing during erection. It is essential that the Contractor provides bracing, slaying or guy ropes to provide stability in the temporary condition to ensure stability and the temporary members shall not be removed until such time as they are replaced by permanent bracings/guy frames and associated floor/roof diaphragms or bracing.
- It has been assumed that all erection will take place utilising mobile/tower cranes and mobile access platforms. Any specialised erection requirements are indicated in the Risk Assessments.
- The Steelwork Subcontractor is to design all connections, including baseplates, using connection loads/moments, to be provided by Shepherd Gilmour after Tender.
- All bolts to be minimum M16 Grade 8.8.
- Refer to Shepherd Gilmour foundation drawings for top of concrete levels for foundations.
- Drawings marked "Preliminary", "Comment" or "Tender" shall not be used for construction.
- Born to beam connections using plates welded across flange lips without stiffeners back to the web shall not be permitted.
- In all instances where windposts or deposits connect at the head to floor beam or rather a sliding head connection shall be provided to allow 30mm deflection of the beam/rafter.
- The Steelwork Subcontractor is to provide and fix any anti-rag systems for purlins and side rails required by the Manufacturer's details.
- The Steelwork Subcontractor is to provide any cleader angles shown on the drawings as By Steelwork Subcontractor. Any additional cleader angles/secondary steelwork etc. required is to be supplied by the Cleader. The Cleading Subcontractor is to be sent copies of the steelwork drawings when being invited to tender to allow him to assess the requirements for cleaders etc.
- Refer to Architects drawings for all fire protection requirements to structural steelwork.



**NOTES**

- This drawing is copyright and the property of Shepherd Gilmour and must not be copied in whole or part without their prior written permission.
- This drawing is to be read in conjunction with the appropriate Architect's and M&E Engineer's drawings together with any other relevant Shepherd Gilmour drawings, sketches and specifications etc.
- This drawing must not be scaled, the Contractor must report any dimensional discrepancies and errors or omissions to the Engineer prior to construction commencing.
- Significant Risks (as described in the 2007 CDM Regulations) are listed in the Pre-Construction Information Register.
- All steelwork on this project is to be grade S275 to BS EN 10025 unless noted otherwise. Refer to Shepherd Gilmour Steelwork Specification for subgrades.
- Refer to Shepherd Gilmour Steelwork Specification for subgrade of all steelwork noted on the drawings as external.
- All hollow section steelwork (RHS, RHS SHS) is to be hot finished, grade S355J2H to BS EN 10210 unless noted otherwise.
- The assumption is that all steelwork will be erected by a competent Contractor experienced in the erection of steelwork designed to allow columns to be free standing during erection. It is essential that the Contractor provides bracing, slaying or guy ropes to provide stability in the temporary condition to ensure stability and the temporary members shall not be removed until such time as they are replaced by permanent bracings/guy frames and associated floor/roof diaphragms or bracing.
- It has been assumed that all erection will take place utilising mobile/tower cranes and mobile access platforms. Any specialised erection requirements are indicated in the Risk Assessments.
- The Steelwork Subcontractor is to design all connections, including baseplates, using connection loads/moments, to be provided by Shepherd Gilmour after Tender.
- All bolts to be minimum M16 Grade 8.8.
- Refer to Shepherd Gilmour foundation drawings for top of concrete levels for foundations.
- Drawings marked "Preliminary", "Comment" or "Tender" shall not be used for construction.
- Born to beam connections using plates welded across flange lips without stiffeners back to the web shall not be permitted.
- In all instances where windposts or deposits connect at the head to floor beam or rather a sliding head connection shall be provided to allow 30mm deflection of the beam/rafter.
- The Steelwork Subcontractor is to provide and fix any anti-rag systems for purlins and side rails required by the Manufacturer's details.
- The Steelwork Subcontractor is to provide any cleader angles shown on the drawings as By Steelwork Subcontractor. Any additional cleader angles/secondary steelwork etc. required is to be supplied by the Cleader. The Cleading Subcontractor is to be sent copies of the steelwork drawings when being invited to tender to allow him to assess the requirements for cleaders etc.
- Refer to Architects drawings for all fire protection requirements to structural steelwork.

Rev	Description	Rev. by	Date
C7	Diags added to RHS beam	IW	19.10.2012
C6	PFC orientation changed	IW	04.05.2012
C5	Lintel bearing detail added to Gridline B/10	IW	27.04.2012
C4	Gutter purlins added.	IW	20.04.2012
C3	Lintel bearing detail added.	IW	19.04.2012

**Client/Architect**  
**KIER**  
 Kier Group  
 100 Regent Road, London, E1 3BB  
 Tel: 020 7553 1100 Fax: 020 7553 1111  
 www.kier.co.uk

**Project**  
**Rosendale Leisure Project**  
**Marl Pits**

**Title**  
**Elevations/Sections**

**Shepherd Gilmour Consulting Engineers**  
 200 Regent Road, London, E1 3BB  
 Tel: 0161 837 1500 Fax: 0161 837 1549  
 Email: marl@shepherd-gilmour.co.uk  
 Website: www.shepherd-gilmour.co.uk

**Issue**  
**CONSTRUCTION**

**Drawn By** IW  
**Checked By**  
**Approved By**

**Date** Feb 2011  
**Size** A1  
**Scale** As Shown

**Drawing Number**  
**M32074-04-03**

**Revision**  
**C7**

