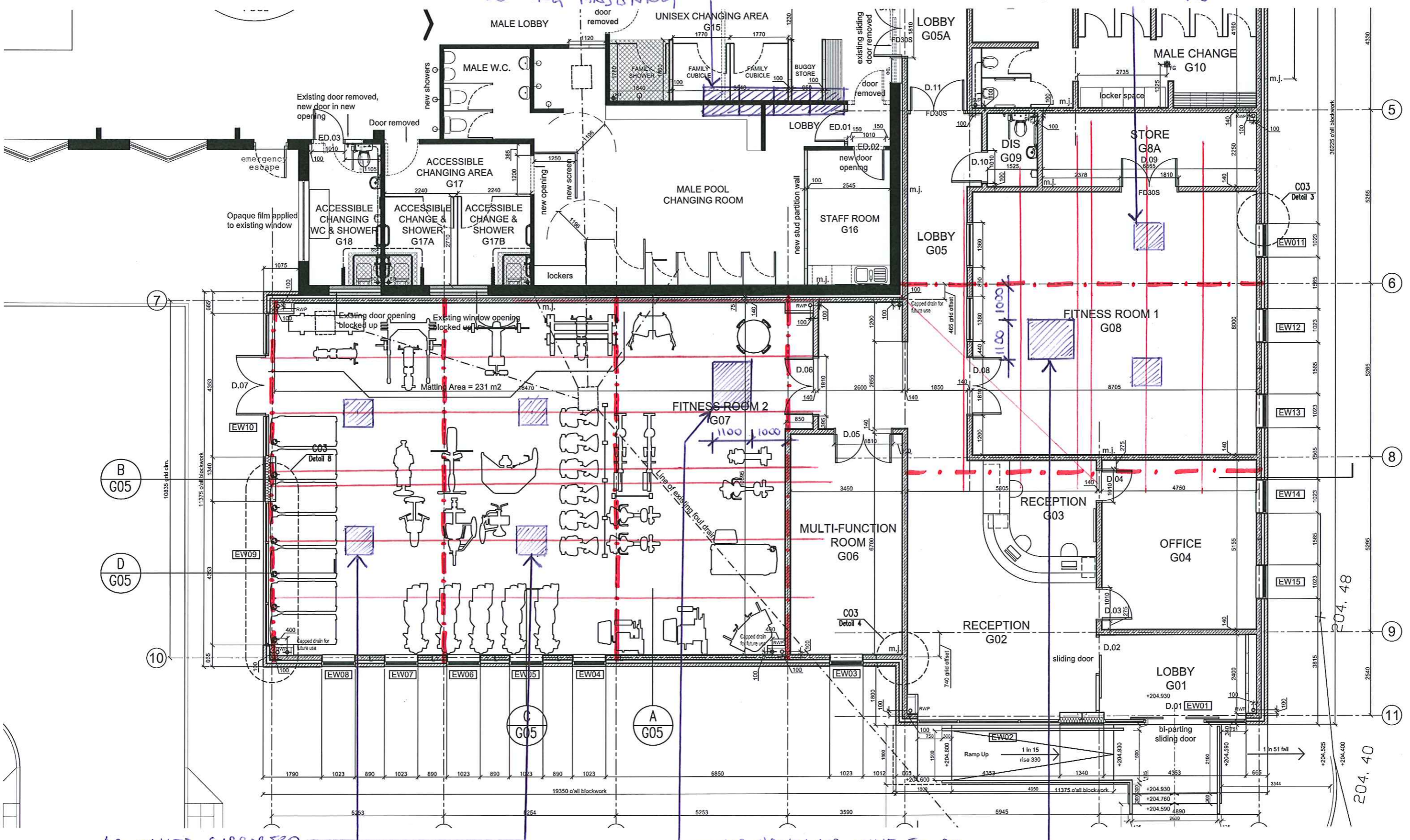


CONDENSING UNITS TO BE SUPPORTED DIRECTLY OFF LOAD-BEARING MASONRY

AC UNITS SUPPORTED FROM 1^{NO} PURLIN. DO NOT SUPPORT FROM AHU PURLINS OR CHS



AC UNITS SUPPORTED FROM 1^{NO} PURLIN. DO NOT SUPPORT FROM AIR HANDLING UNIT PURLINS OR CHS

AIR HANDLING UNIT TO BE SUPPORTED FROM 2^{NO} PURLINS, MAX 1.0 METRE FROM TRUSS. NB. NO OTHER SERVICES TO BE SUPPORTED OFF PURLINS

M32074-SK21

7/9/2012