

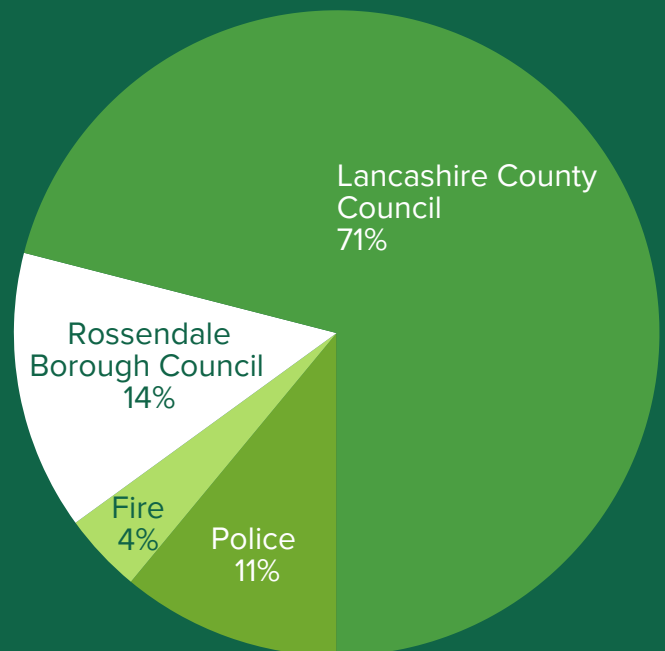
BUDGET CONSULTATION

2025-26

Rossendale Borough Council collects Council Tax on behalf of:

- Rossendale Borough Council
- Lancashire County Council
- The Police
- Fire Authorities

The money collected was split in the following way during 2023/24. As Rossendale Borough Council receives 14% of your Council Tax we only have the powers to set this part of your bill.



Where our funding comes from ...

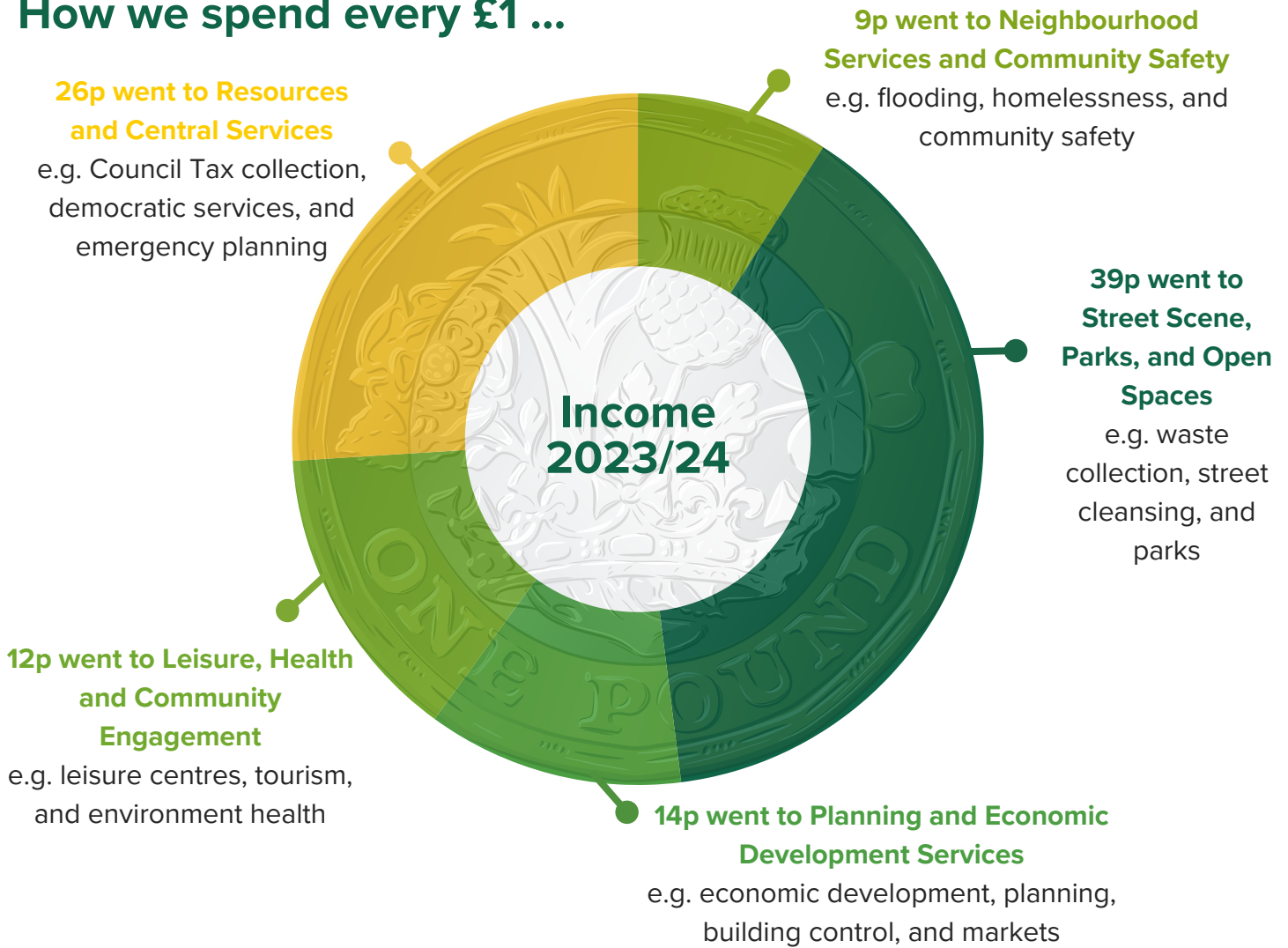
Council Tax accounted for 67% of Rossendale Borough Council's funding in 2023/24 and is a significant factor in ensuring the continued delivery of our services. The remaining 33% is provided by Central Government.

£9 Million Total Funding

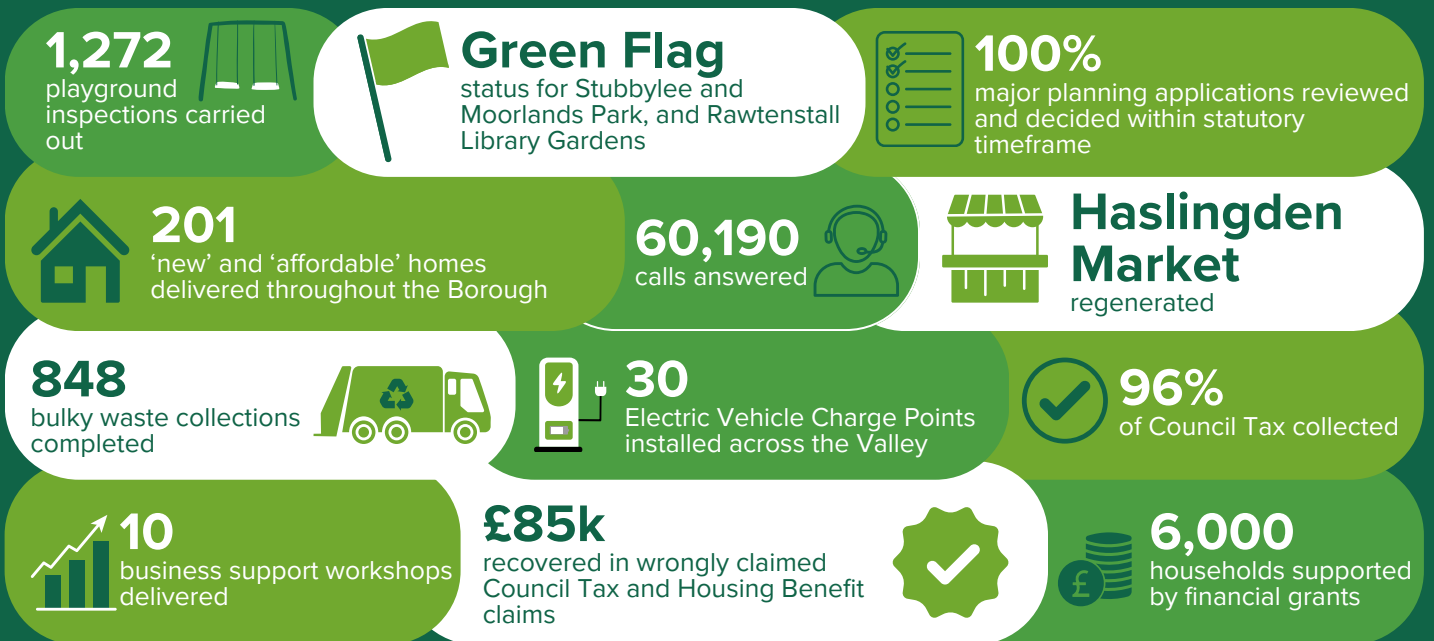
67% - £6.2 Million
Council Tax

33% - £3.1 Million
Baseline Funding
(Business Rates)/New
Homes Bonus/ Other

How we spend every £1 ...



We are proud to deliver a wide range of services for our residents ...



We will continue to invest in the borough by developing new ways of generating income, bidding for external funding, sharing services with partners and driving efficiencies.